



# Association for Academic Pathology

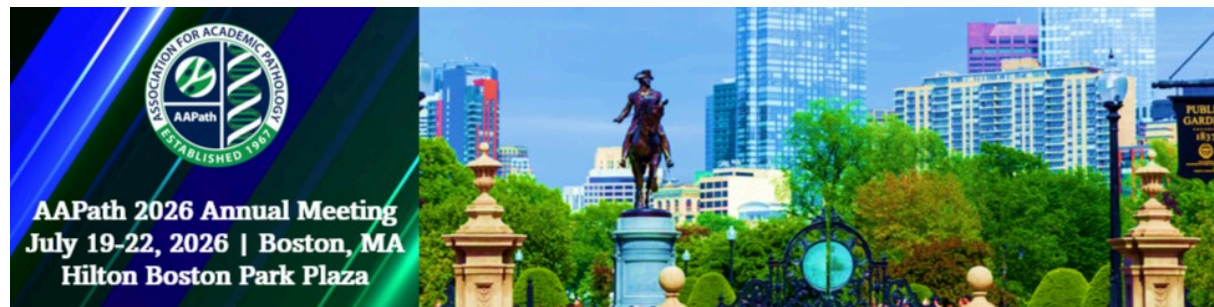
*Improving Health through Diagnosis,  
Education & Discovery*

## AAPath E-News: May 2026

### *Important Updates from the AAPath...*

- [AAPath 2026 Annual Meeting: Register by May 31<sup>st</sup> to Save \\$200](#)
- [Honoring the 2026 AAPath Award Recipients](#)
- [2025 Benchmarking Data Coming Soon!](#)
- [Get the Latest Advocacy Update from the Deputy Director](#)
- [Explore the New ICPI Fellowship Directory](#)
- [Join Upcoming Virtual Events & Access Past Recordings](#)
- [What's New in Academic Pathology? Join the Editor-in-Chief Office Hours](#)
- [Special Election Outcome: Announcing the New AAPath Council Secretary-Treasurer](#)
- [Welcome New Leadership: Chair Membership Recognition](#)

## AAPath 2026 ANNUAL MEETING



### AAPath 2026 Annual Meeting

**Last Reminder to Save \$200 – Act Now and Register Today!**

**REGISTER TODAY** before **rates increase after May 31<sup>st</sup>**! Registering now secures the current registration rates that are \$200 less than they will be on June 1<sup>st</sup>! **Hint:** For those who need to process payment approvals through your department, on the final step of the registration process, under the "Select Option" for payment, select "Invoice Me" rather than "Pay Now" -- you will receive the invoice by email for payment within 30 days! Starting on June 1<sup>st</sup>, registration rates will increase and the system will default to the "Pay Now" option only.

Don't miss this opportunity to join your colleagues for this once-yearly, highly anticipated opportunity to network with leaders in academic pathology! Arrive in time for the Welcome Reception at 5:00pm (ET) on Sunday, July 19<sup>th</sup>, and engage in educational programming over three days – Monday,

Tuesday, and Wednesday, concluding with the Awards Lunch to honor your colleagues of their achievements and service to academic pathology. If you are unable to attend the meeting in person, registration for remote participation by Zoom for most of the ballroom sessions is available. All registered attendees, whether attending in-person or remotely, will have access to session recordings online after the meeting has ended.

### **Preliminary Program Available**

AAPath Section Councils and Committees are finalizing a robust lineup of timely, high-quality educational sessions. Plan your networking, professional development, and sessions of interest among the high quality and timely educational programming of the five Sections of AAPath: CHAIRS, PRODS, APEX, UMEDS, and GMEAS by viewing preliminary program at: [www.academicpathology.org/aapath2026](http://www.academicpathology.org/aapath2026).

### **Travel Information**

Book your hotel room at the Hilton Boston Park Plaza at the AAPath negotiated group rates that will expire on [June 24, 2026](#), or when sold-out, whichever occurs first! Plan your visit with resources from the Hilton Boston Park Plaza and Meet Boston, available at: [www.academicpathology.org/AAPath2026-Travel](http://www.academicpathology.org/AAPath2026-Travel)

### **The AAPath Annual Meeting is open to all AAPath Members! *Not yet a member?***

AAPath offers a General Membership category for faculty and staff at AAPath Departmental Member Institutions who are not otherwise affiliated with a Section, Committee, or Group. This is a great way to engage with the AAPath community and grow your leadership in academic pathology. For more information or to apply, please contact Angela Chopin at [achopin@academicpathology.org](mailto:achopin@academicpathology.org), or visit: [www.academicpathology.org/membership](http://www.academicpathology.org/membership)

**Secure Your Spot for the AAPath 2026 Annual Meeting TODAY —  
Registration Rates Increase After May 31<sup>st</sup>.**

**REGISTER TODAY**

---

## **Exhibitor Information**

**Exhibit at the AAPath 2026 Annual Meeting – Few Spots Remain!**

***Exhibitor Rates Increase by \$500 After June 1<sup>st</sup>!***

The AAPath Annual Meeting exclusively convenes pathology decision makers in academic practice, undergraduate and graduate medical education, and research. Network with over 400 Academic Pathology leaders in an intimate setting for exchanging ideas and information on current and cutting-edge topics and technology in Practice Management, Medical Education, and Research. All exhibitor and sponsor opportunities are explained in the [AAPath 2026 Exhibitor Prospectus](#). To learn more and apply today, visit the AAPath website at: [www.academicpathology.org/AAPath2026-Exhibits](http://www.academicpathology.org/AAPath2026-Exhibits).

We want your help! If you have any questions or know of a vendor, company, or organization who needs to be at the AAPath Annual Meeting, please share the link with them and contact [exhibits@academicpathology.org](mailto:exhibits@academicpathology.org)

**APPLY TODAY**

## Honoring 2026 AAPath Award Recipients

The Association for Academic Pathology is pleased to recognize the recipients of the [2026 AAPath Distinguished Service and Achievement Awards](#)! These distinguished awardees will be honored during the Awards Lunch Program in-person at the [AAPath 2026 Annual Meeting](#).

### AAPath Distinguished Service Award



**David N. Bailey, MD**  
*University of California San Diego*



**Ann D. Thor, MD**  
*University of Colorado*

---

### Margaret Grimes Distinguished Achievement Award in Graduate Medical Education



**Marie C. DeFrances, MD, PhD**  
*University of Pittsburgh*

---

### Distinguished Service Award in Pathology Department Administration



**Distinguished Service Award in  
Graduate Medical Education Administration**  
Marlea Grider, MS  
Emory University



**Chelle Kozy, C-TAGME**  
*Orlando Health*

## BENCHMARKING

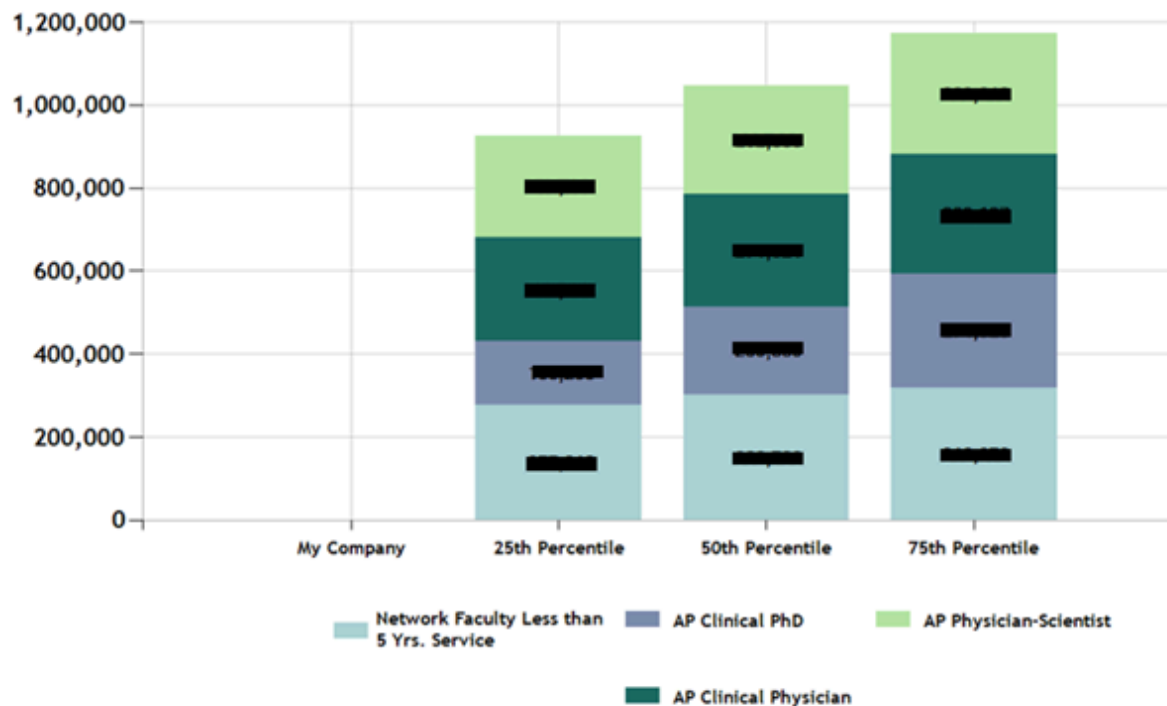
### **AAPath 2025 Benchmarking Data Coming Soon**

#### **Faculty and Administrator Compensation Benchmarking Results Are Coming Soon!**

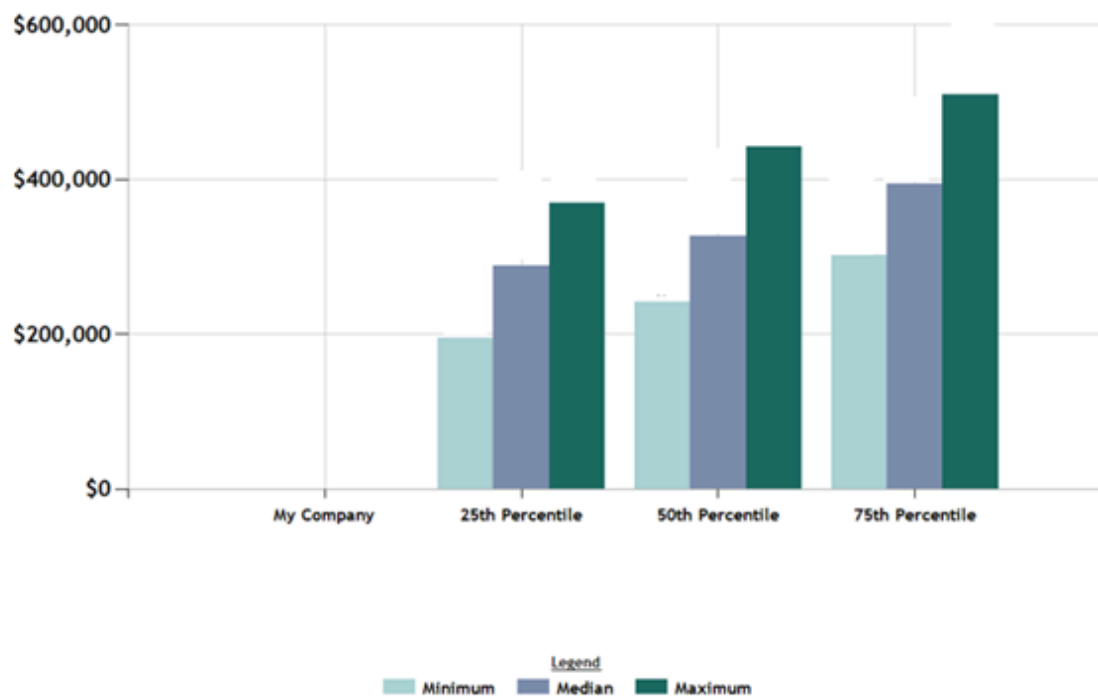
For those who contributed departmental data on compensation for faculty and/or executive administrators for the 2024-2025 academic year, you will receive messaging on how to access the aggregate data in comparison with the data you submitted. Survey results include aggregate question-by-question comparisons and customized reports (with dynamic filtering) in PowerPoint and Excel formats. Apply filters to make the results more meaningful and unique to your organization's interests and comparisons. If you need assistance or see a discrepant value with any of your responses, please contact the AAPath support team at: [info@academicpathology.org](mailto:info@academicpathology.org).

For those departments who did not participate, there will be opportunities in the near future to view various data points that have been collected since 2022. For a preview, here are some summary Key Stats from this year's collection period:

Network Faculty vs. AP Assistant Professor Faculty Compensation Comparison



Min/Mid/Max Salary for CLIA Directors



A

## Advocacy Update

*From the desk of AAPath's Deputy Director, [Lydia P. Howell, MD](#)*

Changes in the research funding environment and immigration have been two hot button issues for AAPath's advocacy activities this year. Here's what has been happening this month in research advocacy:

- On May 26, 2026, AAPath’s Research Committee submitted comments in response to a [request for information](#) from the National Institutes of Health (NIH) regarding the 2026 research framework for their next strategic plan. The NIH has three priorities within this framework: Research Areas, Research Capacity, and Research Operations. Included among the many points in the AAPath response was emphasis on the importance of basic science research, the need for training and development grants for early career investigators including those in broad fields such as data science and AI, continued support for animal models in addition to developing newer “organ on a chip” models, and the need for expensive infrastructure which might best be served by a national network of core laboratories. The AAPath response also noted the loss of talented early-career faculty to industry and other non-academic careers, and encouraged continuation of grants targeted for these individuals as well as development of new communication models to gain trust in science since social media is perceived by the general public as one of the least trustworthy methods. The AAPath response is posted on the [Statements & Reports](#) webpage.
- The report “Sustaining the Biomedical Workforce: Innovative Pathways for Retaining and Supporting Physician-Scientists” ([Sustaining the Biomedical Workforce: Innovative Pathways for Retaining and Supporting Physician-Scientists - NAM](#)) was just released by the National Academy of Medicine and includes recommendations on support for early and mid-career scientists from their workshop in September 2025. AAPath was represented at this meeting by Deputy Director Lydia Howell, MD, who contributed to the findings.

AAPath has also been carefully following changes from the U.S. Citizenship and Immigration Services since international graduates are an important part of the academic pathology workforce. Two new communications were released on May 21, 2026, describing how decisions will be made for adjustment of status ("green card") applications that are filed within the United States. The AAMC has reviewed the memorandum and is concerned about the impact on international physicians, especially those practicing in underserved communities. Additional guidance is expected from the Administration. Note that immigration and the international workforce will be the featured topic in the Advocacy Session at the AAPath 2026 Annual Meeting in Boston this July.

- [Policy Memorandum](#): Adjustment of Status is a Matter of Discretion and Administrative Grace, and an Extraordinary Relief that Permits Applicants to Dispense with the Ordinary Consular Visa Process
- [Press Release](#): U.S. Citizenship and Immigration Services Will Grant ‘Adjustment of Status’ Only in Extraordinary Circumstances.

Lastly, you can participate in advocacy during Academic Medicine Week, June 8-12, 2026. The AAMC has created a [social media toolkit](#) to help you highlight activities in your department that demonstrate the value of the great work in academic pathology. Your voice and presence can make a difference! Tag

## ICPI FELLOWSHIP PROGRAM DIRECTORY

### NEW ICPI Fellowship Program Directory Now Available!

The Association for Academic Pathology (AAPath) is excited to share a new opportunity available through our partnership with the Intersociety Council for Pathology Information (ICPI).

ICPI—recognized for its comprehensive online residency training program directory—has expanded its platform to include a **new** online fellowship training program directory. *Programs with a paid residency listing can now add unlimited fellowship listings at no additional cost.*

#### Getting started is easy:

- Visit the [ICPI website](#) and scan the fellowship programs listed to find your program.

- If you see a “**Learn More**” button, your institution already has a paid residency program listing, meaning you can begin adding fellowship program information right away.
- Residency program coordinators are set as the default contacts to enter data, but access can be reassigned to other staff members as needed by contacting [icpi@academicpathology.org](mailto:icpi@academicpathology.org).

### Don't see a “**Learn More**” button for your fellowship program(s)?

Contact [icpi@academicpathology.org](mailto:icpi@academicpathology.org) to enroll your residency program and unlock FREE fellowship program listings associated with that program. Fellowship programs not affiliated with a residency program can purchase a standalone listing for \$250 (renewable annually), also by contacting [icpi@academicpathology.org](mailto:icpi@academicpathology.org).

While reaching trainees is challenging, among a plethora of online and social media resources, ICPI now offers the **ONLY** complete listing of all residency and fellowship programs in the US, which is truly game-changing for trainees. ICPI endeavors to build the “go to” site for pathology training information and generate visibility for the most current information about your program(s).

Take advantage of this incredible value and opportunity today by visiting the ICPI website at: [www.pathologytraining.org/!](http://www.pathologytraining.org/)

## VIRTUAL EVENTS

### Upcoming Virtual Events



**Tuesday, June 2<sup>nd</sup>**

4:00-5:00pm ET (3:00pm CT/2:00pm MT/1:00pm PT)

**“The Editor is In” Session for Academic Pathology**

Considering submitting a manuscript, but not sure you have enough data for acceptance? Wondering if your manuscript fits the scope of *Academic Pathology*? Want to talk through an idea for an article? Interested in becoming a reviewer, advisor or editor? Meet with Editor-in-Chief James Crawford, MD, PhD and Executive Editor Priscilla Markwood, each with decades of editorial experience, to discuss anything of interest related to journal publishing.

[Click Here to Join the Session!](#)



**Friday, June 5<sup>th</sup>**

2:00-3:00pm ET (1:00pm CT/12:00pm MT/11:00am PT)

**Chronic Kidney Disease (CKD) May Be the Tip of the CKM Iceberg –  
Is Your Institution Prepared to Avoid a Collision?**

The rapidly growing recognition that the convergence of CVD, CKD, and metabolic disorders – CKM (Cardiovascular-Kidney-Metabolic Syndrome) – impacts hundreds of millions of Americans, has sparked great interest in and opened the door for increased uACR and eGFR testing and management

of those with and at risk for CKD. For leaders in academic pathology, remember the “K” in CKM and advise your colleagues in endocrinology, primary care, and other specialties to do the same! NKF’s [CKDintercept](#) provides tools and resources that can help inform an appropriate path forward for your institution, as well as resources produced by the [NKF’s Laboratory Engagement Initiative](#) (LEI).

Join the webinar with the **AAPath 2025 Friends of Pathology Award recipient**, the [National Kidney Foundation \(NKF\)](#), presented by NKF representatives, **Joseph Vassalotti, MD, CMO**, and **Elizabeth Montgomery, National VP, Clinical Practice innovation and Population Health**, hosted by the AAPath Practice & Management Committee. Additionally, for some background broadcasted to the general public, did you happen to see the high-visibility 2026 Super Bowl commercial on “[Mission: SOS](#)” featuring two well-known celebrities?!

**Registration:** [Click Here to Register!](#)

## Past Virtual Events

Stay current with AAPath’s latest virtual programming! If you were unable to attend, recordings of this past month’s exclusive member events are now available at: [www.academicpathology.org/past-virtual-events](http://www.academicpathology.org/past-virtual-events). **Highlights include:**

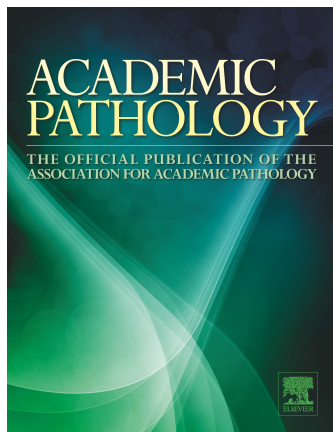
The **GMEAS Bootcamp Essentials**, held on Tuesday, May 5<sup>th</sup> from 1:00–2:30pm ET, was organized by the GMEAS Council for GMEAS members. The session featured a welcome from GMEAS leadership, an overview of ACGME accreditation basics presented by Cindy Riyad, PhD (ACGME Pathology Review Committee Executive Director), guidance on key resources for new GMEAS members, a preview of the Annual Meeting, and breakout discussions focused on MedHub and New Innovations.

[Click Here to View Past Recordings](#)

## ACADEMIC PATHOLOGY ARTICLES AND EDITOR-IN-CHIEF SESSIONS

### What's NEW in *Academic Pathology*

*Academic Pathology* is AAPath’s **fully open-access, PubMed-indexed, peer-reviewed journal** and part of the world-class collection of journals and pathology resources published by Elsevier, with visibility to a global audience of academic leaders through Science Direct and Clinical Key. ***Academic Pathology’s* 2024 impact factor increased to 1.3 (from 1.2 in 2023 and 1.0 in 2022) and the journal is now ranked 61 of 90 journals in the Pathology category – one more reason to [submit your manuscript](#) to AAPath’s official journal!**



### Recently Published Articles

- **Novel adult learning-based curriculum for pathology residents: components and critique at five years**, H. Nebbache, et al. Research Article First Published May 5, 2026: <https://doi.org/10.1016/j.acpath.2026.100251>
- **Trends in the diversity of board-certified pathologists in the United States**, A. Patel, et al. Research Article First Published May 13, 2026: <https://doi.org/10.1016/j.acpath.2026.100250>

#### **“The Editor is In” Sessions: Office Hours with the Editor-in-Chief for *Academic Pathology*:**

Scholarly publishing is not just a meaningful way to document and share important observations and research milestones with a global audience; it is often a critical step toward professional advancement and academic promotion. Since its inception in 2014, *Academic Pathology* has focused on filling a unique content niche among journals, while developing the careers of faculty and administrators. By publishing peer-reviewed administrative and educational scholarship and creating a platform for exploring new areas of study, *Academic Pathology* has grown steadily into a worldwide showcase for achievements in academic pathology; now amplified by our publishing relationship with Elsevier – a global leader in advanced information and decision support to accelerate progress in science and healthcare worldwide.

Considering submitting a manuscript, but not sure you have enough data for acceptance? Wondering if your manuscript fits the scope of *Academic Pathology*? Want to talk through an idea for an article? Interested in becoming a reviewer, advisor or editor? Meet with Editor-in-Chief James Crawford, MD, PhD and Executive Editor Priscilla Markwood, each with decades of editorial experience, to discuss anything of interest related to journal publishing. **You can find upcoming session information posted on the AAPath’s Virtual Events webpage at: [www.academicpathology.org/virtual-events](http://www.academicpathology.org/virtual-events)**

## **SPECIAL ELECTION FOR SECRETARY-TREASURER**

### **Special Election Outcome**

#### ***Announcing the New AAPath Council Secretary-Treasurer***

At the direction of the AAPath Council, the AAPath Nominating Committee recently conducted a Special Election to fill the vacancy for Secretary-Treasurer. The current AAPath Council Secretary-Treasurer, Dr. Michael Feldman (Indiana University), has been [appointed Interim Dean for the IU School of Medicine](#), and he will step down from his position as Chair of the IU Department of Pathology and Laboratory Medicine and his role as AAPath Council Secretary-Treasurer effective June 1<sup>st</sup>.

AAPath is pleased to announce that Jayanta Debnath, MD (University of California, San Francisco School of Medicine), has been elected by the voting Chair membership to serve as the new AAPath Council Secretary-Treasurer. The AAPath Council extends its sincere appreciation to Dr. Feldman for his dedicated service to the Association since 2024 and warmly welcomes Dr. Debnath to this leadership role.

**Secretary-Treasurer**



**Jayanta Debnath, MD**

*University of California, San Francisco School of Medicine*

AAPath is privileged to be guided by diverse, talented, and dedicated volunteer leadership. The AAPath Council encourages all Chair members to explore pathways to Council service by participating in AAPath committees. For more information about volunteer opportunities, please see the AAPath Committees webpage at: [www.academicpathology.org/committees](http://www.academicpathology.org/committees) and contact [info@academicpathology.org](mailto:info@academicpathology.org)

## MEMBER RECOGNITION

### AAPath Member Recognition

AAPath seeks to highlight major member accomplishments in this Member Recognition section of the e-News, where we spotlight special announcements, such as advancement to national leadership positions, inductions into national academies, national and international awards, national press coverage, Chair retirements, new Chair appointments, and more! If you have an announcement that you would like to share, please contact the AAPath Office at: [info@academicpathology.org](mailto:info@academicpathology.org) to let us know!

---

#### **Chair Transitions – AAPath Welcomes New Chair Members!**

*For a complete listing of new Chair members, visit the AAPath website at:  
[www.academicpathology.org/new-chairs](http://www.academicpathology.org/new-chairs)*

---

#### **University of Arizona College of Medicine – Phoenix**

Kristian T. Schafernak, MD, was appointed Chair of the Department of Pathology, effective April 27, 2026. Dr. Schafernak previously served as Interim Chair since September 1, 2024. [Click here](#) to read the full announcement.

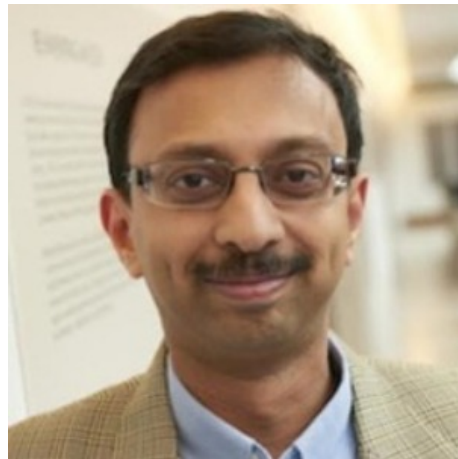


**Kristian T. Schafernak, MD**

---

### **University of Minnesota Medical School**

Bharat Thyagarajan, MD, PhD, MPH, was appointed Head of the Department of Laboratory Medicine and Pathology effective May 1, 2026, following Leo Furcht, MD, who previously served as Head of the Department since March 31, 1990. [Click here](#) to read the full announcement.



**Bharat Thyagarajan, MD, PhD, MPH**



**Leo Furcht, MD**

---

### **University of Texas Medical Branch John Sealy School of Medicine**

Harshwardhan Thaker, MD, PhD, was appointed Chair of the Department of Pathology effective May 15, 2026. Dr. Thaker previously served as Interim Chair since July 10, 2025. [Click here](#) to read the full announcement.



Harshwardhan Thaker, MD, PhD

## MEMBERSHIP CORNER

Please contact the AAPath Office at [info@academicpathology.org](mailto:info@academicpathology.org) if you have any questions about AAPath membership eligibility or resources.

### Member Directory

Only members in good standing have access to AAPath member resources, including the exclusive online member directory. AAPath's member list is always live and searchable. [Click here to search the directory today!](#)

### Member Profile

Each AAPath Member has a profile that allows you to post information and even upload a photo to let others know who you are and what you do! Your member profile is searchable in the AAPath Member Directory. Update your information today by logging in to the [AAPath website](#).

### Job Postings

Do you have a job opening at your institution? Members can share openings with their section listserv network for free as a member benefit. Job openings can also be posted directly to the AAPath Career Center (Job Board), which has broad national visibility. Post or Search for Jobs at: [careers.apcprods.org/](http://careers.apcprods.org/)

### Listserv Networks

**Guidelines:** Members are expected to abide by the [AAPath listserv policies](#). For more information on AAPath's listservs, visit the AAPath website at: [www.academicpathology.org/m-lists](http://www.academicpathology.org/m-lists)

**Best Practices:** When sending messages to the listserv, **please always include your email address in the content of your email message or signature line**, so you can receive direct messages that are not necessary nor informative for the whole listserv membership.

**Archives:** To view the archive of listserv messages, [log in to your member profile](#) and access the E-lists under **My Features**.

### Membership Updates

**New Members** who serve in a role aligned to one of AAPath's membership Sections, i.e., Chairs, Vice Chairs, Executive Administrators, Residency Program Directors, Medical School Educators, or GME Coordinators, should complete a [New Member Inquiry Form](#). *Departments with AAPath membership may add eligible members at any time of the year with no additional cost.*

**New Members** who are **not** currently members of an AAPath Section or Affinity Group are now invited to join in the new General Membership category! **[Click here to complete the online enrollment form today!](#)**

**Need to remove a member from your roster?** Please submit a [Member Removal Request](#).

## Monthly e-News Archive

Find all previous issues of AAPath's Monthly e-News at: [www.academicpathology.org/e-news](http://www.academicpathology.org/e-news)



### Contact Info:

Association for Academic Pathology  
100 West 10<sup>th</sup> Street, Suite 603,  
Wilmington, DE 19801  
[info@academicpathology.org](mailto:info@academicpathology.org)

Connect with Us:

[LinkedIn](#)