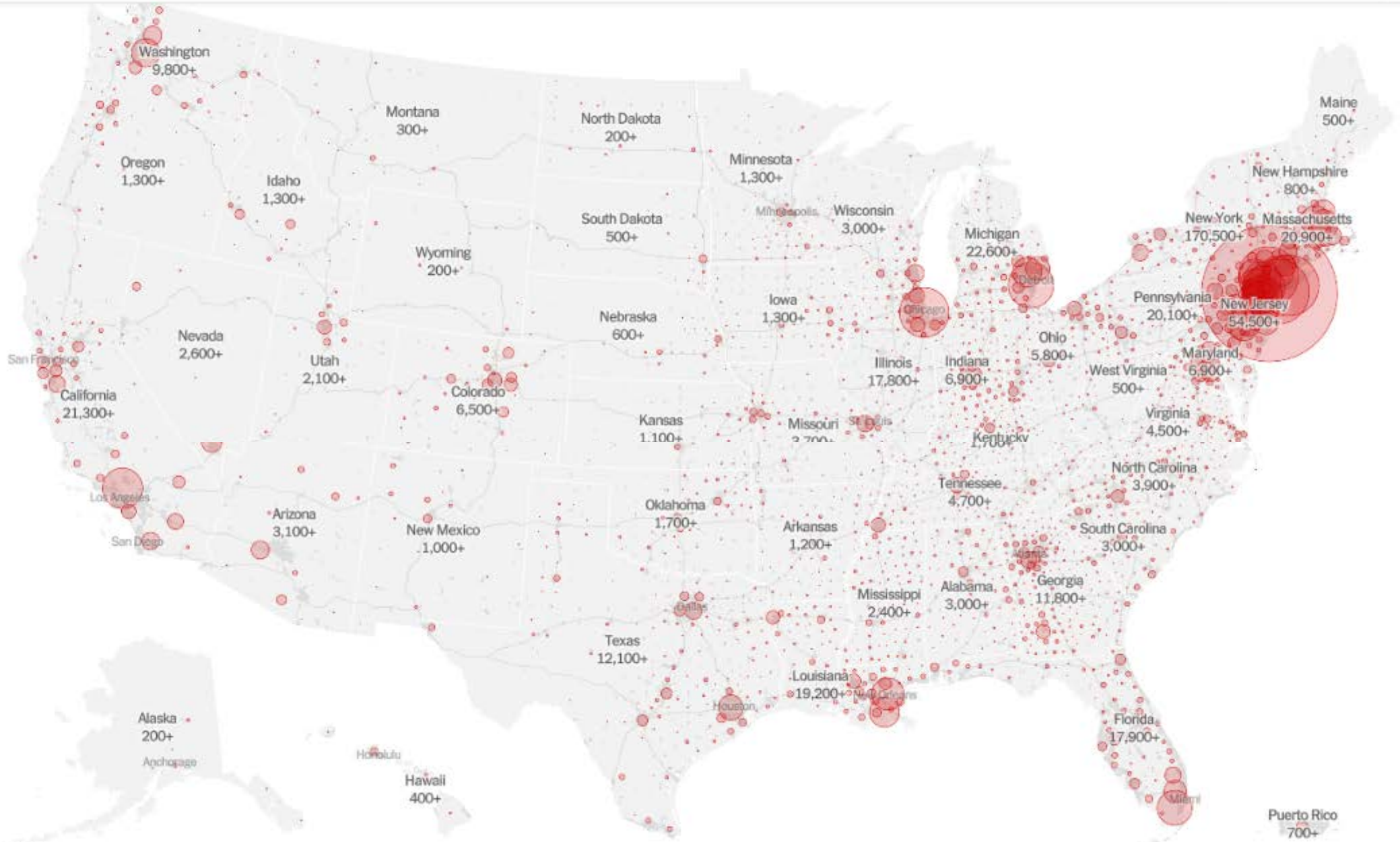


COVID-19 Data Northwell Health Laboratories Update April 11, 2020

James M Crawford, MD PhD
jcrawford1@northwell.edu

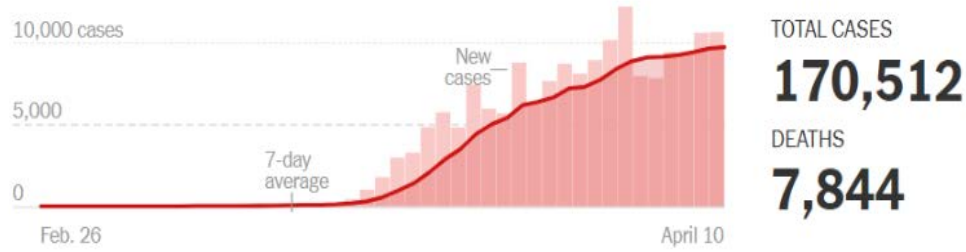




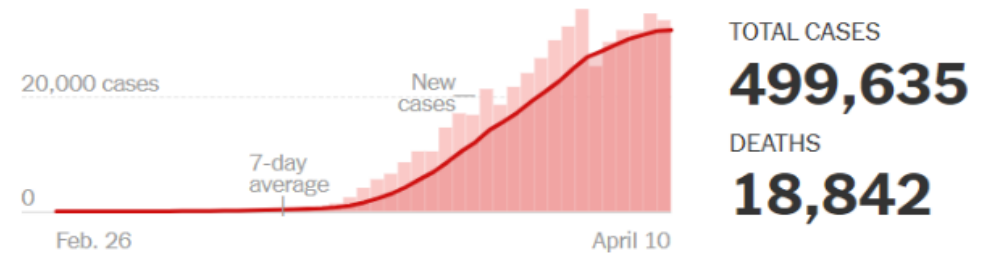
The New York Times

April 11, 2020

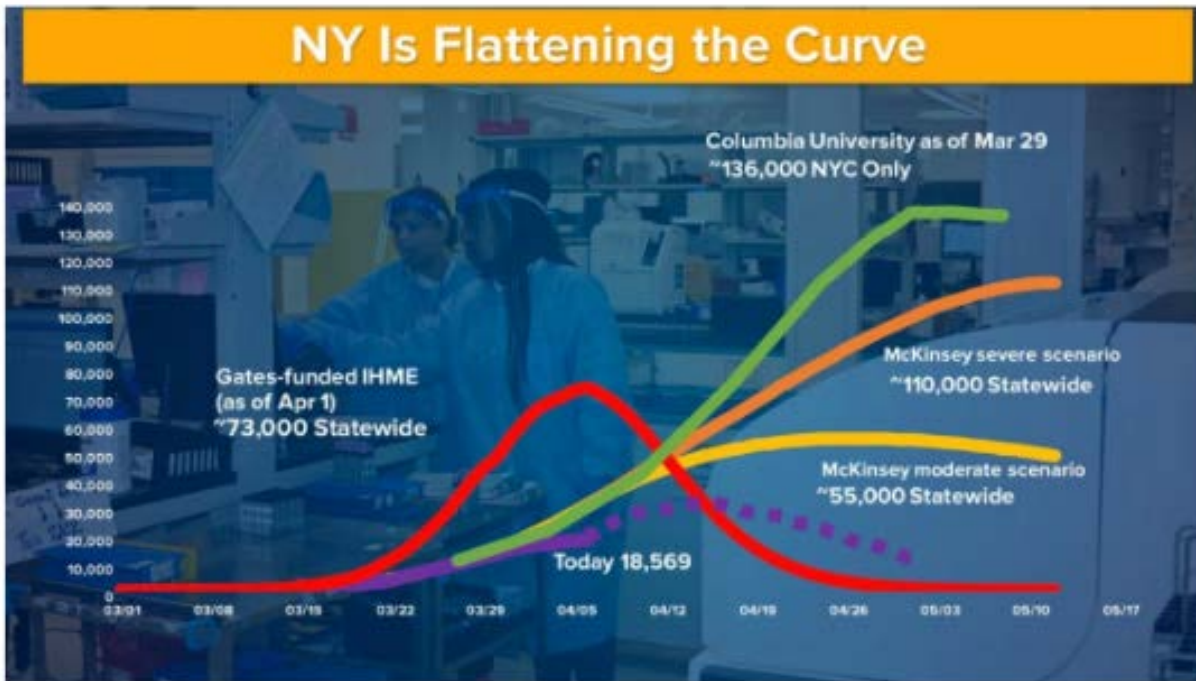
Confirmed cases and deaths in New York State



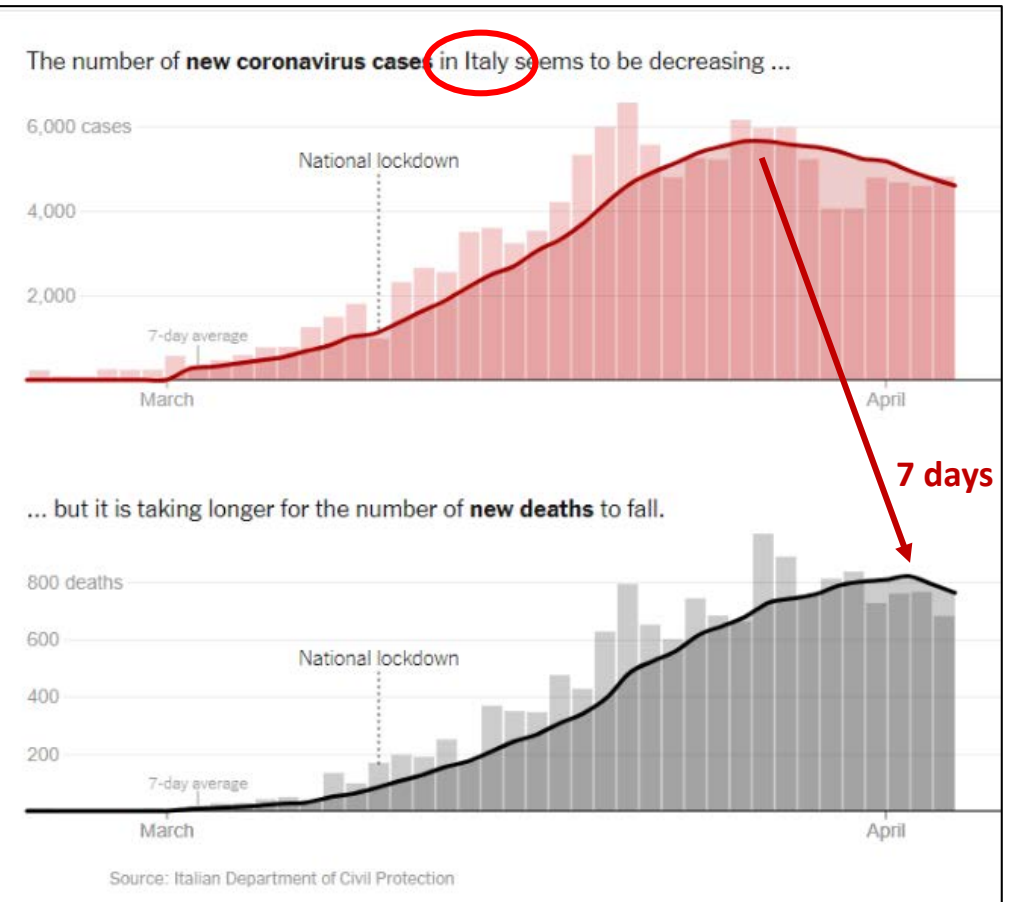
WORLD > THE UNITED STATES



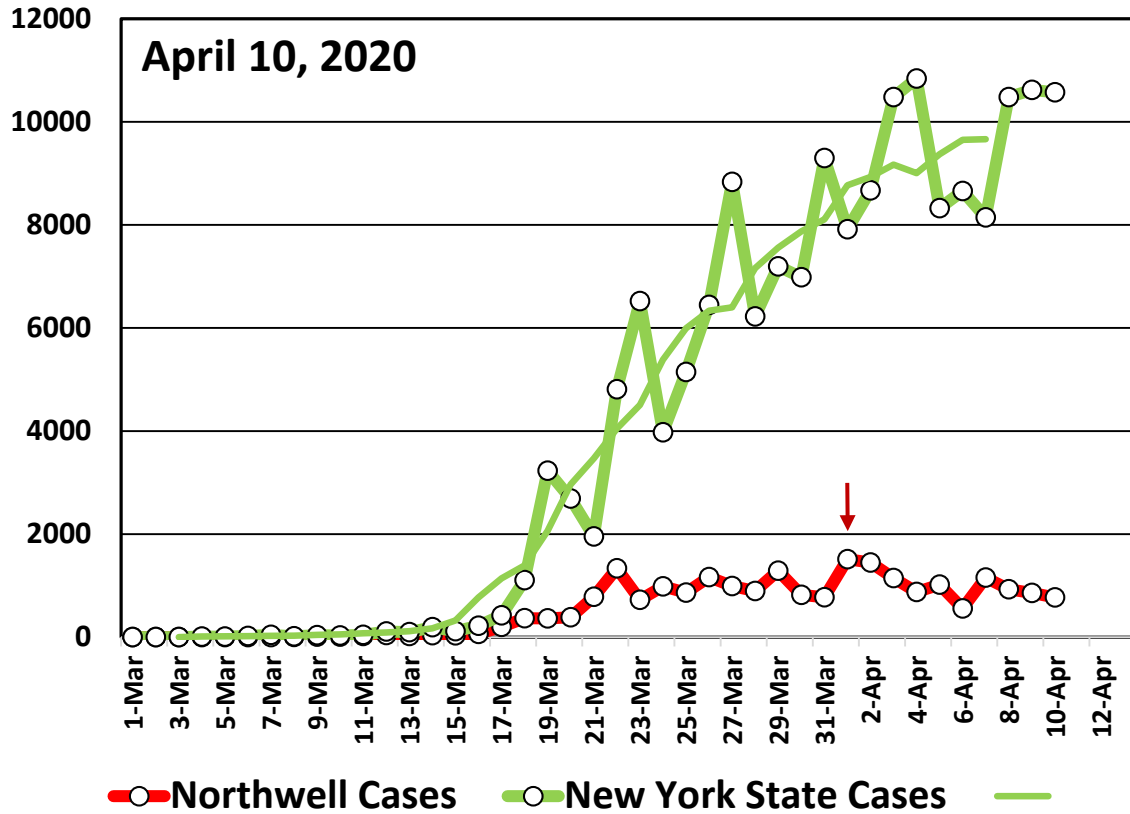
NY Is Flattening the Curve



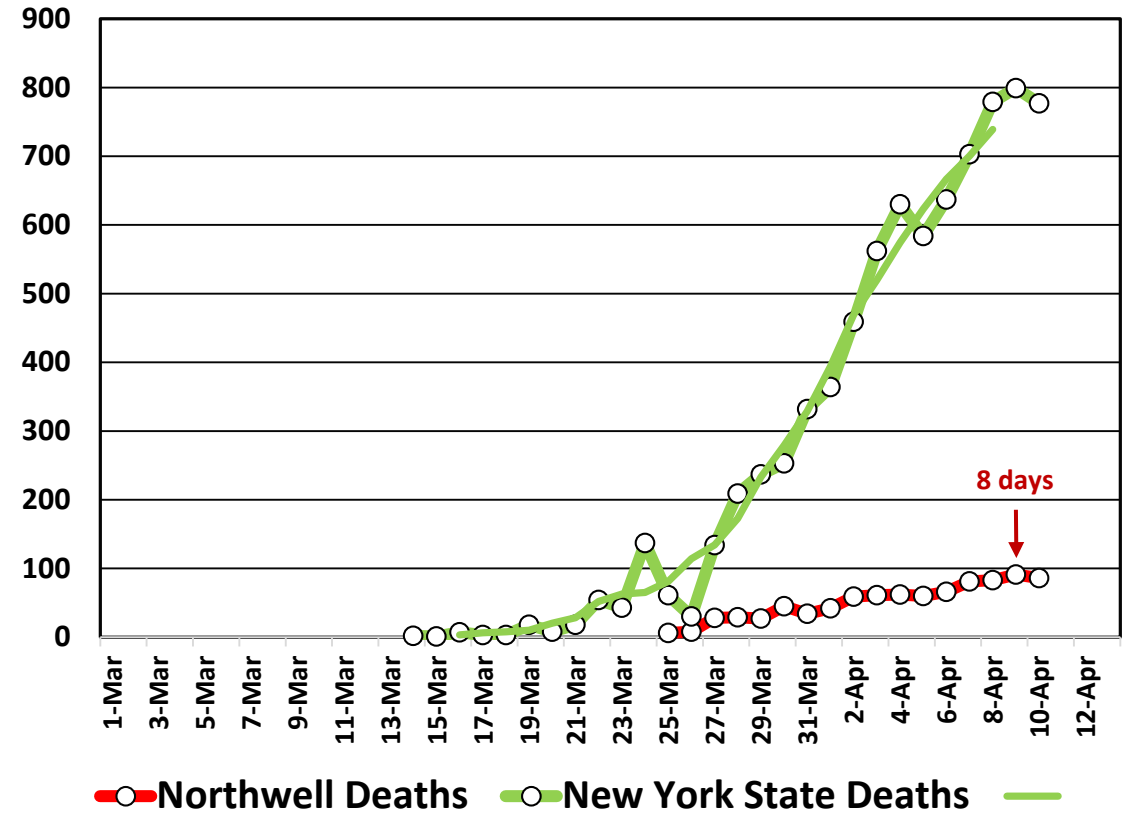
A graphic used by Gov. Andrew M. Cuomo showed several predictions for coronavirus hospitalizations. The purple line represents the actual number. Office of the Governor



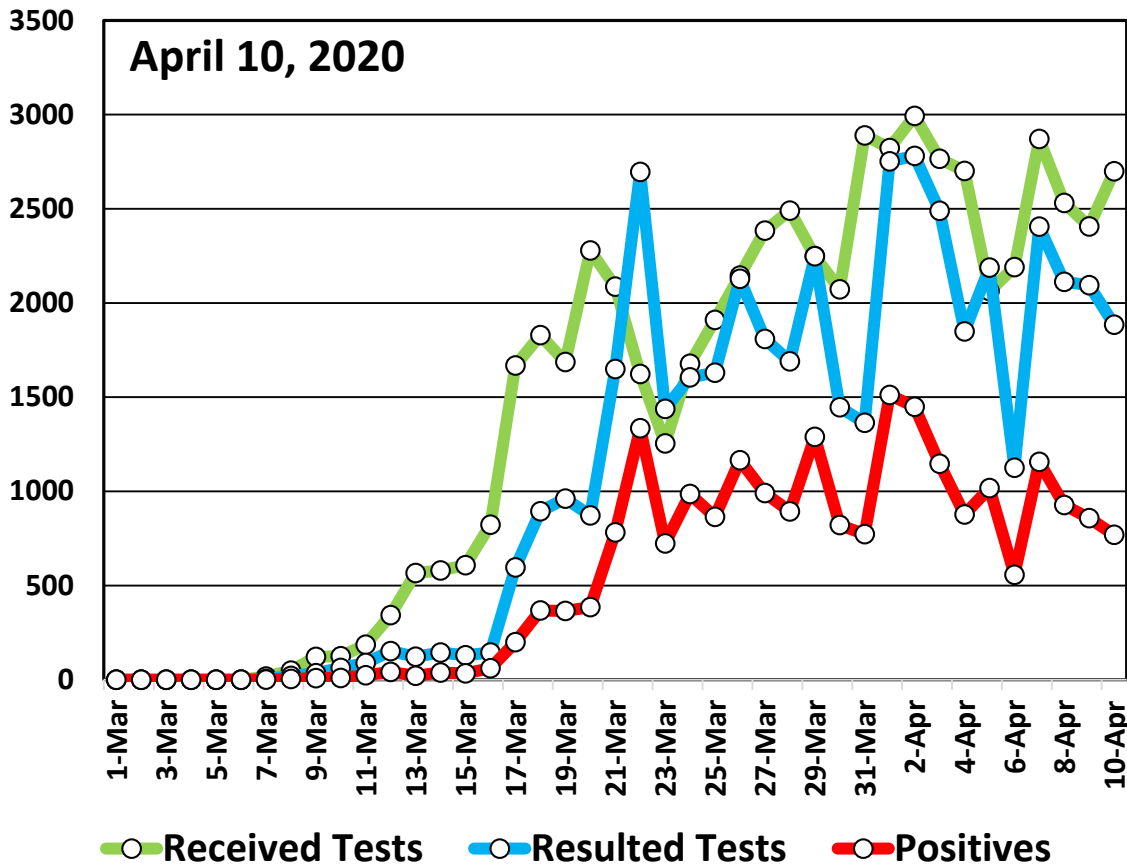
Daily Positive COVID-19 Tests



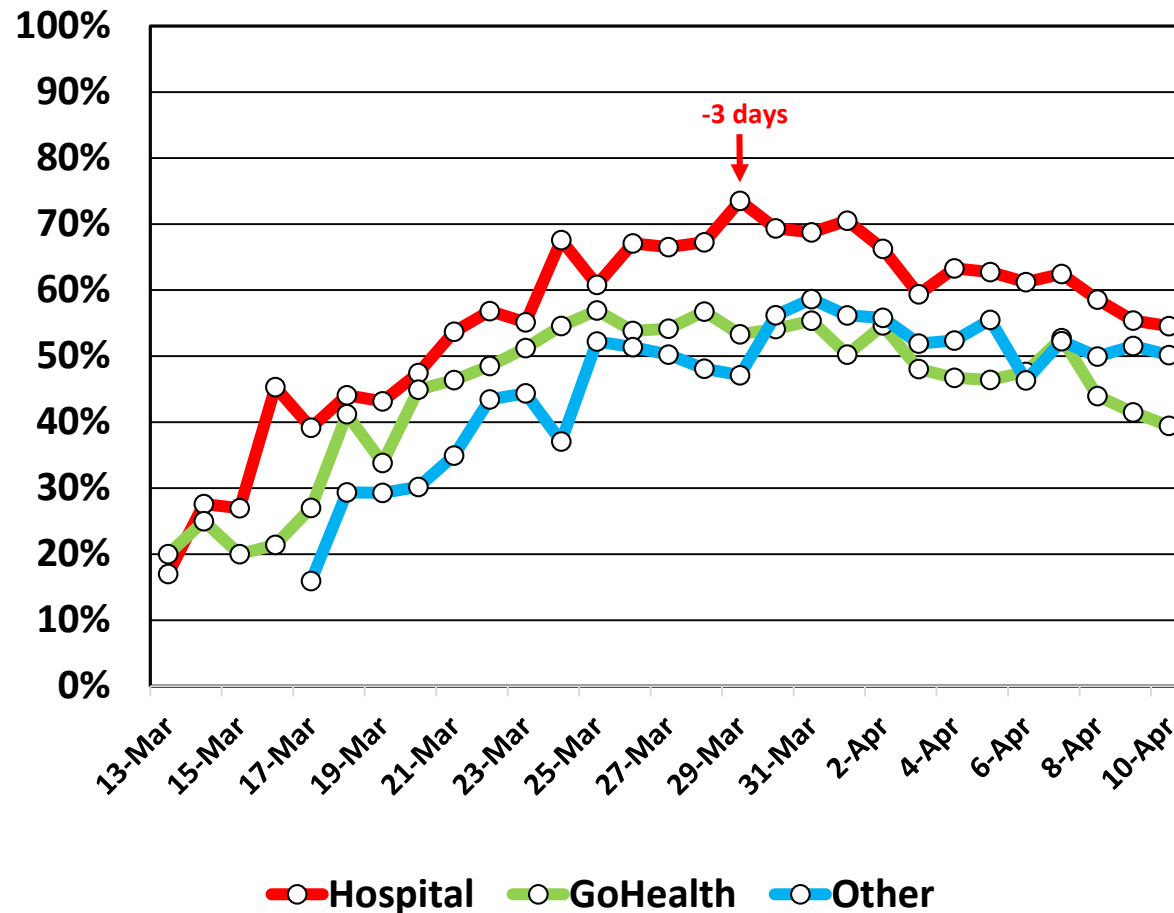
Daily COVID-19 Deaths



Northwell: Daily Resulted COVID-19 Tests



Northwell: COVID-19 Daily Positivity Rates



COVID-19: Laboratory Considerations

- **[COVID-19 PCR] Test Performance:**
 - “Limits of Detection” (LOD): concordance of hospital testing with Core Lab is >95%
 - “Rapid ID” Point-of-Care testing is much less sensitive
- **Serologic Testing for COVID-19 Immunoreactivity**
 - Commercial platform has been validated at the Core Lab
 - ~1,800 Northwell Employees with proven COVID-19 positivity will be tested first
- **“Need to know” [COVID-19 PCR] tests:**
 - Presurgical Testing, Obstetrics, other hospital admissions, other
- **Northwell Convalescent Coronavirus Patient Registry**
 - Donor recruitment is “live” (Feinstein.northwell.edu)
 - Expanded Access Trial (Case Series with rigorous Data Entry into national database)