



Association of  
Pathology Chairs  
**APC 2009**  
**Annual Meeting**

*Pathology Practice and Management:  
Sharing Successes, Avoiding  
Failures and Preparing  
for the Future*

July 15-17, 2009  
Seattle, Washington

[www.apcprods.org](http://www.apcprods.org)



# Do you see yourself in the center of patient care?



Use of innovative **technology...**

**Primary role** on the  
**clinical care team...**



**Central position** in the  
**medical home...**

**Involved** in **health care**  
**reform...**

The CAP is committed to the success of pathologists and the laboratory community, both for today and tomorrow. We've recently launched a multiyear transformation effort to create an enhanced and evolved role for pathologists over the next generation—yielding a greater recognition as physicians actively involved on the patient care team.



**Learn more at [cap.org/transformation](http://cap.org/transformation)**

College of American Pathologists  
325 Waukegan Road, Northfield, IL 60093

**Association of Pathology Chairs 2009 Annual Meeting**  
*Pathology Practice and Management: Sharing Successes, Avoiding Failures and Preparing for the Future*  
July 15-17, 2009  
Fairmont Olympic Hotel, Seattle, Washington

## **Contents**

Hotel Maps .....	3
APC Council Members.....	5
CME Information .....	7
Exhibit Schedule/List of Exhibitors .....	9
APC Meeting Program .....	11
PDAS Meeting Program.....	17
PRODS Meeting Program.....	23
CDS Meeting Program .....	28
List of Participants.....	33

### **APC Code of Conduct**

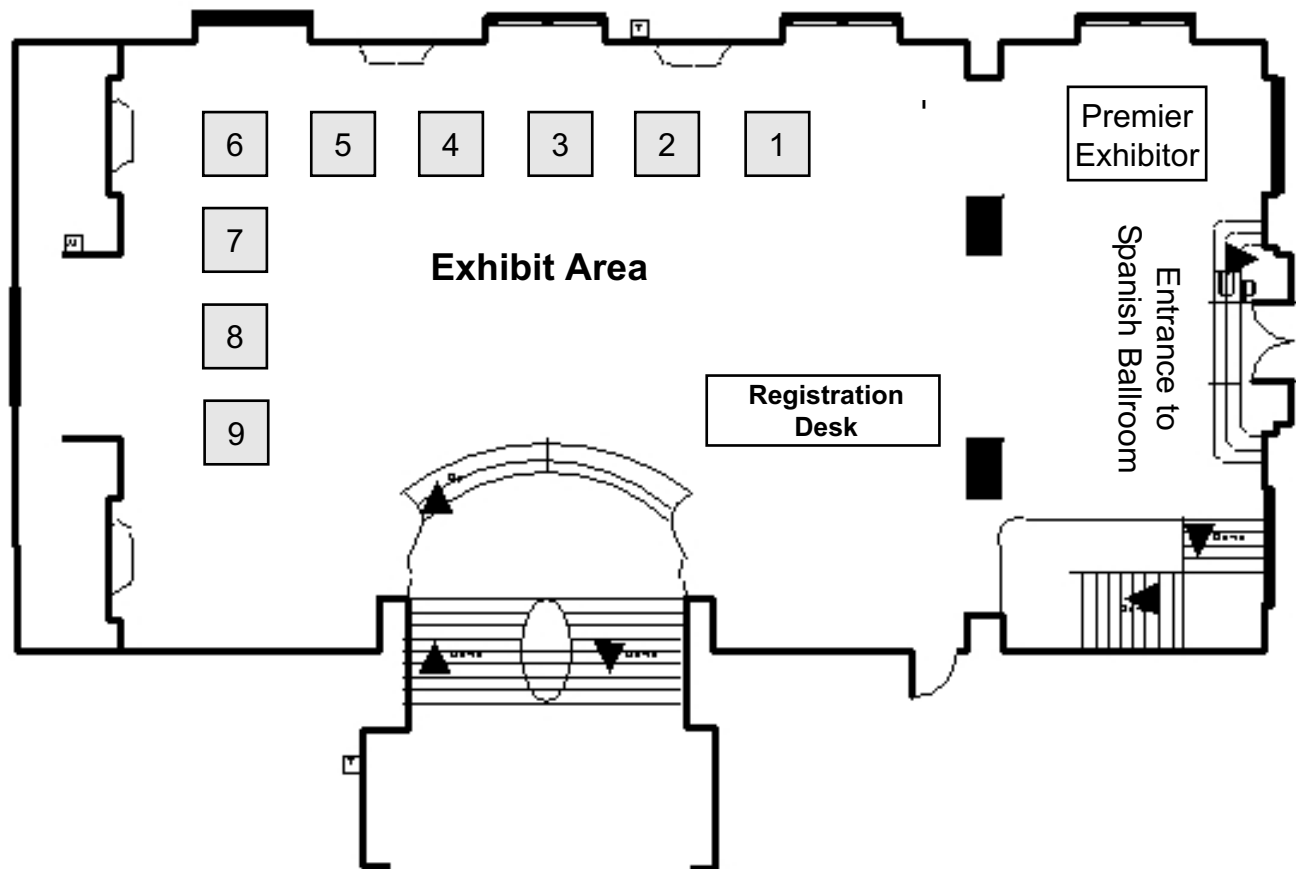
**Code of Conduct:** Events and listservs managed or held by the Association of Pathology Chairs (APC) exist for the professional development of members and for the advancement of academic pathology. Members and guests of events and listservs are expected to conduct themselves with professionalism, cordiality and respect. At a minimum, APC expects members and guests to abide by local and national laws, when attending or interacting at APC events and on APC listservs. Furthermore, APC leadership has developed a 'no tolerance' policy toward misconduct by members or guests that results in physical or emotional harm to fellow members, guests or employees of APC or event facilities. By registering for an event or participating on a listserv, participants are expected to uphold the spirit of this code of conduct, which is intended to support the professional benefits of APC affiliation. Complaints may be submitted confidentially to APC Council, by contacting the Managing Officer by phone at 301-634-7130 or by email to [apc@asip.org](mailto:apc@asip.org). If a complaint is brought to the attention of the Managing Officer, the Conduct Review Committee of the APC Council shall be convened to determine, through a conscientious review of evidence, whether an individual has violated the code of conduct. If a violation of the code of conduct is judged to have occurred by a unanimous vote, the Committee may either issue a warning to correct the behavior (which will subsequently be monitored by the Committee) or the Committee may recommend that the individual will be excluded from participation in APC events and/or listservs for a period of no less than two years from the date of judgment. The individual may appeal the exclusion decision of the Committee to the entire APC Council by contacting the Managing Officer; the appeal decision of the APC Council will be determined by a majority vote. If excluded from participation, at the end of two years, the individual may request in writing permission to participate in APC events and/or listservs, at which time the Conduct Review Committee may grant such permission. The individual may appeal the permission decision of the Committee to the entire APC Council by contacting the Managing Officer; the permission decision of the APC Council will be determined by a majority vote.

**Association of Pathology Chairs 2009 Annual Meeting**  
*Pathology Practice and Management: Sharing Successes, Avoiding Failures and Preparing for the Future*  
July 15-17, 2009  
Fairmont Olympic Hotel, Seattle, Washington

**Notes:**

# Association of Pathology Chairs 2009 Annual Meeting Exhibit Hall

Fairmont Olympic Hotel, Seattle, Washington  
Spanish Ballroom Foyer



Premier

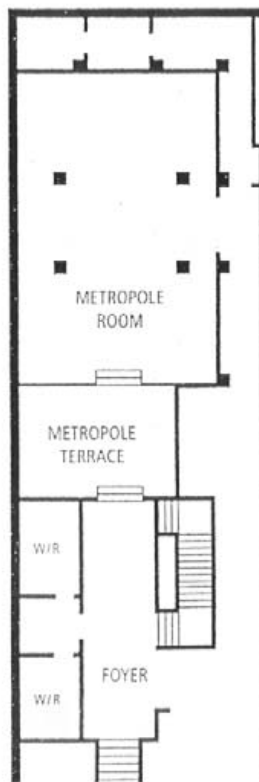
Exhibitor: College of American Pathologists

1. Lippincott Williams & Wilkins
2. McKesson
3. Mopec
4. Olympus America
5. Aurora Interactive Ltd.
6. American Society for Clinical Pathology
7. Elsevier/Saunders/Mosby
8. American Pathology Foundation
9. Impac Software

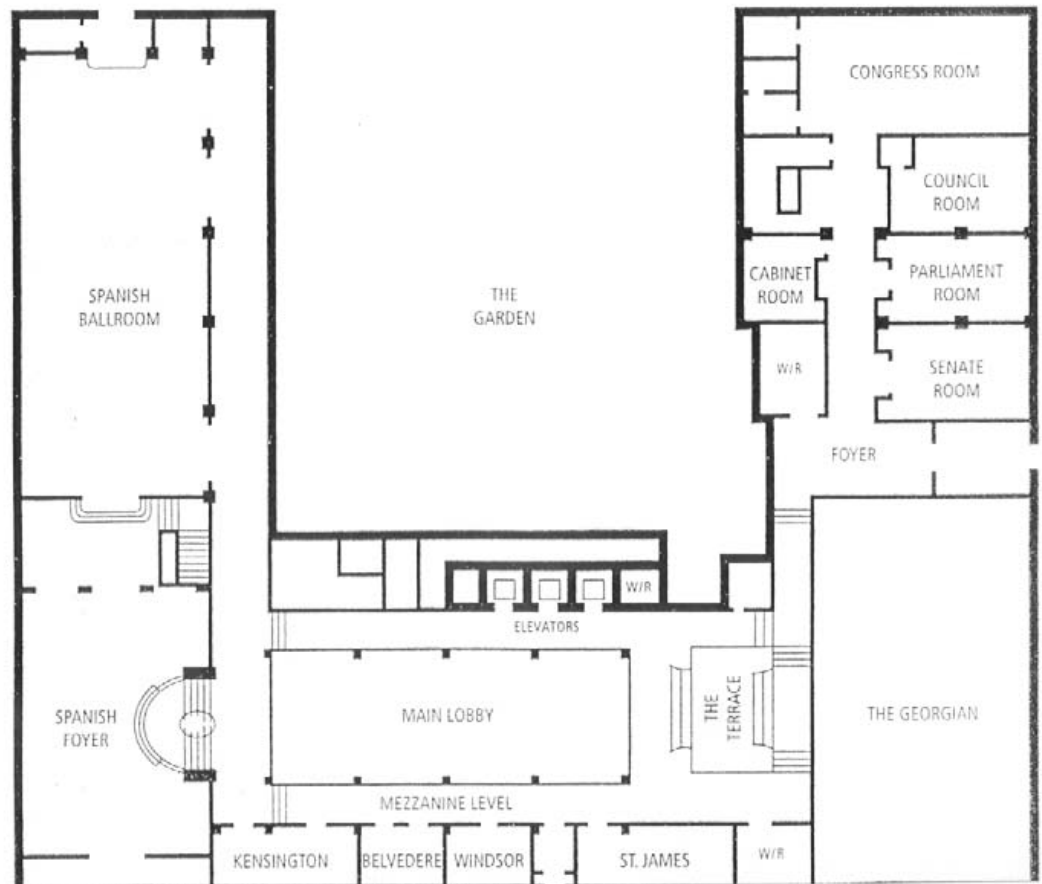
# Association of Pathology Chairs 2009 Annual Meeting

Fairmont Olympic Hotel, Seattle, Washington  
Spanish Ballroom Foyer

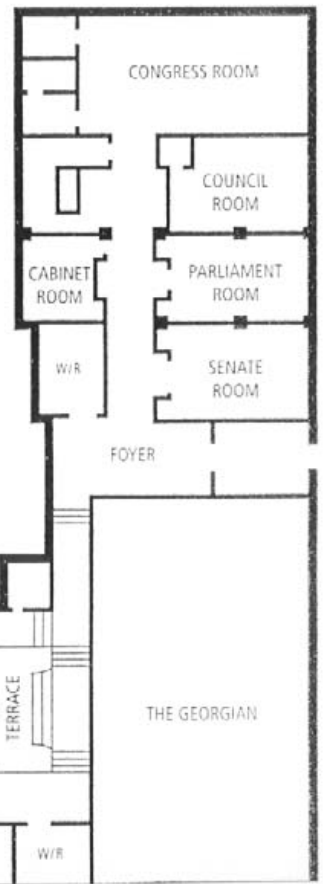
LOWER LEVEL



UPPER LEVEL



ASSEMBLY ROW



**Association of Pathology Chairs 2009 Annual Meeting**  
*Pathology Practice and Management: Sharing Successes, Avoiding Failures and Preparing for the Future*  
July 15-17, 2009  
Fairmont Olympic Hotel, Seattle, Washington

**CME Organizing Committee 2009 Annual Meeting:**

J. Charles Jennette, MD  
University of North Carolina - Chapel Hill

Ann Thor, MD  
University of Colorado at Denver HSC

James M. Crawford, MD, PhD  
North Shore Long Island Jewish Medical Center

Ralph Green, MD, PhD  
University of California at Davis

Robert L. Hunter, MD, PhD  
University of Texas - Houston Medical School

Peter Jensen, MD  
University of Utah School of Medicine

Donald Karcher, MD  
George Washington University Medical Center

Tristram Parslow, MD, PhD  
Emory University Hospital

Patricia A. Thomas, MA, MD, FCAP  
University of Kansas School of Medicine

**2009-2010 Council**

**PRESIDENT**

J. Charles Jennette, MD  
University of North Carolina - Chapel Hill

**PRESIDENT-ELECT**

Peter Jensen, MD  
University of Utah School of Medicine

**PAST PRESIDENT**

James M. Crawford, MD, PhD  
North Shore Long Island Jewish Medical Center

**SECRETARY-TREASURER**

Tristram Parslow, MD, PhD  
Emory University Hospital

**COUNCILOR-AT-LARGE**

Donald Karcher, MD  
George Washington University Medical Center

**CHAIR, Undergraduate Medical Education Committee**

Michael Cohen, MD  
University of Iowa College of Medicine

**CHAIR, Graduate Medical Education Committee**

J. Allan Tucker, MD  
University of South Alabama Medical Center

**CHAIR, Research Committee**

Ann Thor, MD  
University of Colorado at Denver HSC

**CHAIR, Practice & Management Committee**

Robert L. Hunter, MD, PhD  
University of Texas - Houston Medical School

**CHAIR, PRODS**

Stephen Black-Schaffer, MD  
Massachusetts General Hospital

**CHAIR, UMEDS (formerly CDS)**

Michele Raible, MD, PharmD, Oakland University  
William Beaumont School of Medicine

**CHAIR, PDAS**

Nancy Risenhoover  
University of New Mexico



**Association of Pathology Chairs  
"Promoting Excellence in Academic Pathology"**

**APC Mission Statement**

The Association of Pathology Chairs serves as a voice of academic pathology. The mission of the APC is to provide leadership and to advocate for the dynamic discipline of pathology. The APC provides education, training, information resources and networking opportunities for Chairs, residency program directors, graduate student program directors and department administrators.



## Continuing Medical Education (CME) Information

**CME Accreditation Statement:** This activity ("APC 2009 Annual Meeting") has been planned and implemented in accordance with the Essential Areas and policies of the Accreditation Council for Continuing Medical Education (ACCME) through the joint sponsorship of the Federation of American Societies for Experimental Biology (FASEB), the American Society for Investigative Pathology (ASIP), and the Association of Pathology Chairs (APC). FASEB is accredited by the ACCME to provide continuing medical education for physicians.

FASEB designates this educational activity ("APC 2009 Annual Meeting") for a maximum of 25.5 *AMA PRA Category 1 Credit(s)*<sup>TM</sup>. Physicians should only claim credit commensurate with the extent of their participation in the activity.

**Meeting Objective/Target Audience:** The objective of this meeting is to facilitate knowledge acquisition regarding issues and challenges related to care and prevention and to provide a forum for the exchange of research by scientists and investigators. Academic departments of pathology and laboratory medicine are facing significant pressures which adversely impact their ability to carry out their missions of teaching, clinical service, and research.

This meeting focuses on undergraduate (medical school), graduate (residency and fellowship), and lifelong pathology education, as well as the development of educational programs and curricula for training of medical students, residents, fellows, and senior pathologists, as well as on mechanisms to provide quality clinical service to patients. At the completion of this activity, participants should be able to: 1) demonstrate a gained level of knowledge of the methods and approaches being used by departments of pathology and laboratory medicine to accomplish their clinical service and teaching and training missions; 2) be cognizant of ACGME (Accreditation Council for Graduate Medical Education) regulations governing graduate medical education and the accreditation of training programs; and 3) utilize information and data that lead to improvements in human health with the goal of improving patient care and enabling constructive interactions between pathologists and other health care practitioners. The target audience is professionals (MD, DO, PhD) and others who serve as the academic, medical, scientific, and administrative leaders of departments of pathology and laboratory medicine in the United States and Canada.

**Disclosure Policy:** The Federation requires that participants of FASEB-sponsored educational programs be informed of a presenter's academic and professional affiliation and the existence of any significant financial interest or other relationship with the manufacturer(s) of any commercial product(s) discussed in the educational presentation. The Federation, ASIP, and APC also require that when an unlabeled use of a commercial product, or an investigational use not yet approved for any purpose is discussed during the presentation, it must be disclosed that the product is not labeled for the use under discussion or that the product is still investigational. This policy allows the listener/attendee to be fully informed in evaluating the information being presented. Disclosure includes any relationship that may bias one's representation or which, if known, could give the perception of bias. The Federation, ASIP, and APC require that presenters certify any affiliations (e.g., employment, consultancies, stock ownership, honoraria, expert testimony) with any organization or entity with a direct financial interest in the subject matter or materials discussed. The list of speakers who have disclosed relationships will be included in the program and on the meeting website with the nature of the relationship and the associated commercial entity.

**Speaker Disclosures:**

The Association of Pathology Chairs (APC) and The Federation of American Societies for Experimental Biology (FASEB) require that audiences at educational programs sponsored by APC and FASEB be informed of a presenter's (speakers, faculty, authors, contributors) academic and professional affiliations, and the disclosure of the existence of any significant financial interest or other relations a presenter has with the manufacturer(s) of any commercial products(s) discussed in an educational presentation. This policy allows the listener/attendee to be fully knowledgeable in evaluating the information being presented.

**Association of Pathology Chairs 2009 Annual Meeting**  
*Pathology Practice and Management: Sharing Successes, Avoiding Failures and Preparing for the Future*  
July 15-17, 2009  
Fairmont Olympic Hotel, Seattle, Washington

Presenters were asked to disclose any relationship that may bias one's presentation or which, if known, could give the perception of bias. These situations may include, but are not limited to: 1) stock options or bond holdings in a for-profit corporation or self-directed pension plan; 2) research grants; 3) employment (full or part-time); 4) ownership or partnership; 5) consulting fees or other remuneration; 6) non-remunerative positions of influence such as officer, board member, trustee, or public spokesperson; 7) receipt of royalties; 8) speakers bureau; or 9) other.

**Speakers:**

Katsufakis, P. – NBME – 3

Talbert, M. – CAP Graduate Medical Education Committee – 6 (Chair)

Weissman, D. – England and Company - 5

***ONLINE CME Application and Meeting Evaluation***

CME Applications will be submitted ONLINE. If you have not registered for CME by the end of the meeting, you will have an opportunity to register afterwards. Deadline for submission of CME Applications is September 15, 2009.

If you are not applying for CME, we still value your comments. Please submit your Meeting Evaluation ONLINE.

Please use the Meeting Evaluation and CME Application Workbook to keep track of your attendance and comments to facilitate your online submission. You will receive an email with a link to the ONLINE CME Application / Meeting Evaluation website after the meeting.

**Association of Pathology Chairs 2009 Annual Meeting**  
*Pathology Practice and Management: Sharing Successes, Avoiding Failures and Preparing for the Future*  
July 15-17, 2009  
Fairmont Olympic Hotel, Seattle, Washington

## **Exhibit Schedule (Spanish Ballroom Foyer)**

**Wednesday, July 15, 2009**  
4:00 p.m. – 9:00 p.m.

**Thursday, July 16, 2009**  
8:00 a.m. – 5:00 p.m.

**Friday, July 17, 2009**  
8:00 a.m. – 3:30 p.m.

### **American Pathology Foundation (Booth # 8)**

The American Pathology Foundation is a professional society devoted to the business and management of pathology. The Foundation focuses on providing quality educational programs and practice management resources for its members. Membership in the Foundation is open to pathologists and practice managers in private practice, hospitals, independent labs, academic programs and residency. Academic membership includes faculty, residents and the departmental administrator.

[www.apfconnect.org](http://www.apfconnect.org)

### **American Society for Clinical Pathology (Booth # 6)**

The American Society for Clinical Pathology is a not-for-profit medical society organized exclusively for educational, scientific, and charitable purposes. ASCP's membership consists of 11,000 pathologists, other physicians and more than 129,000 laboratory professionals. Long recognized as the premier provider of continuing medical education activities for pathologists and laboratory professionals, the ASCP does approximately 400 workshops, symposia, teleconferences and self-study programs annually. In addition, the ASCP Press is an award winning medical publisher of textbooks, reference manuals, slide atlases and audiovisual materials. The Society also publishes two prestigious journals, The American Journal of Clinical Pathology and Laboratory Medicine.

[www.ascp.org](http://www.ascp.org)

### **Aurora Interactive Ltd. (Booth # 5)**

The mission of Aurora Interactive Ltd. is to facilitate and contribute to better patient outcomes, helping physicians and members of the medical community to achieve their full potential by providing a web based software platform for simplicity and the ease of communications for learning, diagnostic and collaborative interaction.

[www.auroramsc.com](http://www.auroramsc.com)

### **College of American Pathologists (Premier Exhibitor)**

With more than 17,500 members, the CAP is the world's largest association composed exclusively of Board-Certified pathologists and uses the unique expertise of our pathologist members to promote quality in the practice of pathology—helping patients get the right tests, at the right time, with the right results.

The CAP is committed to pathologists' success today and tomorrow and is spearheading a multiyear transformation effort that positions pathologists to: 1) Provide direct patient care by selecting, performing and interpreting diagnostic tests and advising patients and clinicians on the most appropriate treatment options, and 2) Assure the quality of the lab tests and collect, analyze and use patients' clinical results to guide treatment and define best practices.

[www.cap.org](http://www.cap.org)

### **Elsevier/Saunders/Mosby (Booth # 7)**

The world's premier names in health care publishing - Saunders, Mosby, and Churchill Livingstone are all members of the Elsevier team of leading publishers dedicated to meeting the information needs of health science professionals. For over 125 years, the Elsevier name has represented a dedication to excellence in the exchange of information. Working with the world's most respected clinicians, educators, scientists and researchers, Elsevier has set a high standard for quality. Its publications are written and edited by international scholars with excellent clinical, technical and scientific credentials, and wide research and teaching experience in their fields.

[www.us.elsevierhealth.com](http://www.us.elsevierhealth.com)

## Association of Pathology Chairs 2009 Annual Meeting

*Pathology Practice and Management: Sharing Successes, Avoiding Failures and Preparing for the Future*

July 15-17, 2009

Fairmont Olympic Hotel, Seattle, Washington

### **Impac Software (Booth # 9)**

PowerPath®, Impac Software's laboratory information management system for anatomic pathology, streamlines workflow and daily operations for laboratories offering surgical pathology, cytology, dermatopathology, and autopsy services. The ability to accurately and efficiently manage and communicate anatomic pathology diagnoses is fundamental to improving patient care. With over 450 installations worldwide, PowerPath offers unmatched performance in managing anatomic pathology laboratories in hospitals, medical centers, reference labs, and academic facilities.

Phone: +1-408-830-8000

Toll free: 888-GO-IMPAC

[sales@impac.com](mailto:sales@impac.com)

[www.impac.com](http://www.impac.com)

### **Lippincott Williams & Wilkins (Booth # 1)**

Lippincott Williams & Wilkins, a Wolters Kluwer Health company is a leading international publisher of medical books, journals, and electronic media. Stop by and browse our extensive selection of pathology resources, including the widely acclaimed **Rubin's Pathology, Fifth Edition** textbook. *Plus learn about the all new Rubin's Pathology Flash Cards.*

[www.lww.com](http://www.lww.com)

### **McKesson (Booth # 2)**

McKesson, with 25+ years of experience, has the expertise to lead pathologists through the complexities of reimbursement, to identify areas of lost revenue and help them keep more of what they earn. McKesson is uniquely qualified to help you take your clinical and financial performance to the next level. 800.903.7824

[www.mckesson.com/pathologyservices](http://www.mckesson.com/pathologyservices)

### **Mopec Company Description (Booth # 3)**

Mopec furnishes products, equipment and services for the pathology and histology related sciences. Related equipment includes, autopsy/necropsy tables, morgue refrigerators, cabinets, grossing work stations, cadaver handling and storage equipment. Mopec provides consulting, engineering and manufacturing and installation of mortuary, pathology and allied sciences products and equipment.

Mopec is dedicated to one standard: Continued growth by providing our customers with the best quality products/services at competitive prices with unmatched service.

[www.mopec.com](http://www.mopec.com)

### **Olympus America (Booth # 4)**

Olympus America Scientific Equipment Group provides innovative microscope imaging solutions for researchers, doctors, clinicians and educators. Olympus microscope systems offer unsurpassed optics, superior construction and system versatility to meet the ever-changing needs of microscopists, paving the way for future advances in life science.

[www.olympusamerica.com](http://www.olympusamerica.com)

## APC Meeting Program

### Wednesday, July 15, 2009

#### GENERAL INFORMATION:

- 7:00 a.m. – 6:00 p.m. Meeting Registration  
Spanish Ballroom Foyer
- 7:00 a.m. – 8:00 a.m. Breakfast  
Spanish Ballroom Foyer
- 7:00 a.m. – 7:30 a.m. APC/PDAS Workshop Leader Orientation  
Kensington Room

#### SCIENTIFIC PROGRAM:

- 8:00 a.m. – 8:05 a.m. Welcome & Meeting Objectives  
*J. Charles Jennette, MD, President, APC*
- 8:05 a.m. – 10:40 a.m. APC/PDAS Plenary I: Maximizing Clinical Margins  
Spanish Ballroom**
- 8:05 a.m. – 8:10 a.m. Welcome  
Moderator: *Robert L. Hunter, MD, PhD, University of Texas – Houston, and  
Chair, Practice Management Committee*
- 8:10 a.m. – 9:10 a.m. What does the future hold for payment for pathology Part B services?  
*Stephen Black Schaffer, MD, Massachusetts General Hospital*
- 9:10 a.m. – 9:50 a.m. Managed care contracting: At the table or on the menu  
*David S. Wilkinson, MD, PhD, Virginia Commonwealth University*
- 9:50 a.m. – 10:30 a.m. Professional component billing: Pathologists can not work for free  
*Robert DeCresce, MD, Rush-Presbyterian-St Luke's Med Ctr*
- 10:30 a.m. – 10:40 a.m. Orientation and Goals for Workshops  
*J. Charles Jennette, MD, University of North Carolina - Chapel Hill*
- 10:40 a.m. – 11:00 a.m. Coffee Break and Exhibits  
Spanish Ballroom Foyer**
- 11:00 a.m. – 12:00 p.m. APC/PDAS Workshops: A Call to Action (Part 1)**
- APC/PDAS Workshop 1 (Optimizing Part B Income & Expenses – Group 1)**  
*Leaders: J. Allan Tucker, MD, University of South Alabama and John Baci, Children's  
Hospital Boston/Harvard Medical School*  
Kensington Room
- APC/PDAS Workshop 2 (Optimizing Part B Income & Expenses – Group 2)**  
*Leaders: Michael Talbert, MD, University of Oklahoma Health Sciences Center and  
Nancy Risenhoover, University of New Mexico*  
St. James Room

Association of Pathology Chairs 2009 Annual Meeting

*Pathology Practice and Management: Sharing Successes, Avoiding Failures and Preparing for the Future*

July 15-17, 2009

Fairmont Olympic Hotel, Seattle, Washington

**APC/PDAS Workshop 3 (Optimizing Part A Income & Expenses – Group 1)**

*Leaders: Stephen C. Peiper, MD, Thomas Jefferson University and Harry Pukey-Martin, Ohio State University*

Belvedere Room

**APC/PDAS Workshop 4 (Optimizing Part A Income & Expenses – Group 2)**

*Leaders: A. Julian Garvin, MD, PhD, Wake Forest University and Joseph Rondinelli, UMDNJ-New Jersey*

Windsor Room

**APC/PDAS Workshop 5 (Optimizing Professional Component Billing Income & Expenses – Group 1)**

*Leaders: Clifford Lowell, MD, PhD, University of California, San Francisco and Marcia McCall, Wake Forest University*

Council Room

**APC/PDAS Workshop 6 (Optimizing Professional Component Billing Income & Expenses – Group 2)**

*Leaders: John Eble, MD, Indiana University and Douglas Karsch, University of Miami*

Cabinet Room

**APC/PDAS Workshop 7 (Optimizing Outreach Income & Expenses – Group 1)**

*Leaders: Roger A. Brumback, MD, Creighton University Medical Center and Thomas Dilts, Virginia Commonwealth University*

Senate Room

**APC/PDAS Workshop 8 (Optimizing Outreach Income & Expenses – Group 2)**

*Leaders: Jay L. Hess, MD, PhD, University of Michigan and Martha Miers, Vanderbilt University School of Medicine*

Parliament Room

12:00 p.m. – 1:30 p.m.

**APC/PDAS Lunch**

The Garden Room

**New Chairs Lunch with Council (Invitation Only)**

Kensington Room

1:30 p.m. – 2:30 p.m.

**Practice and Management Survey Results and Discussion**

*Robert L. Hunter, MD, PhD, University of Texas – Houston*

Spanish Ballroom

2:30 p.m. – 3:00 p.m.

**Coffee Break & Exhibits**

Spanish Ballroom Foyer

3:00 p.m. – 4:30 p.m.

**APC/PDAS Plenary II: Pathologists Can Not Work for Free**

Spanish Ballroom

3:00 p.m. – 3:45 p.m.

How to negotiate a fair Part A contract: The pathology perspective

*Fred Gorstein, MD, Thomas Jefferson University Medical Center*

3:45 p.m. – 4:30 p.m.

How to negotiate a fair Part A contract: The hospital's perspective

*Patricia Sanders-Hall, MD, University of Kansas Hospital*

4:30 p.m. – 5:30 p.m.

**Break (Free Time)**

5:30 p.m. – 6:30 p.m.

**Opening Reception**

Spanish Ballroom Foyer

**Association of Pathology Chairs 2009 Annual Meeting**  
*Pathology Practice and Management: Sharing Successes, Avoiding Failures and Preparing for the Future*  
July 15-17, 2009  
Fairmont Olympic Hotel, Seattle, Washington



- 6:30 p.m. – 9:00 p.m.**      **Keynote Lecture and Banquet**  
Spanish Ballroom
- 6:30 p.m.      Welcome and Moment of Silence  
*J. Charles Jennette, MD, President, APC*
- 7:30 p.m.      Keynote Lecture: This drug's for you! Using the Geonome to Optimize  
Therapeutics  
*Howard McLeod, PharmD, Fred Eshelman Distinguished Professor of  
Pharmacogenomics and Individualized Therapy, University of North Carolina*
- 8:30 p.m.      Presentation of Distinguished Service Award to  
Jay M. McDonald, MD  
*Presented by J. Charles Jennette, MD, President, APC*  
*Tribute by C. Bruce Alexander, MD, University of Alabama at Birmingham*

**Thursday, July 16, 2009**

**GENERAL INFORMATION:**

- 7:00 a.m. – 5:00 p.m.      Meeting Registration  
Spanish Ballroom Foyer
- 7:00 a.m. – 8:00 a.m.      Breakfast  
Spanish Ballroom Foyer

**SCIENTIFIC PROGRAM:**

- 8:00 a.m. – 11:00 a.m.**      **APC/PDAS Workshops: A Call to Action (Part 2)**  
*Moderators: Robert L. Hunter, MD, PhD, Chair, APC Practice and  
Management Committee and Marjel Whitmore, MPA, Chair, PDAS Council*  
Spanish Ballroom
- 8:00 a.m. – 8:15 a.m.      Welcome and Workshop Objectives
- 8:15 a.m. – 8:30 a.m.      **APC/PDAS Workshop 1 (Optimizing Part B Income & Expenses – Group 1)**  
*Leaders: J. Allan Tucker, MD, University of South Alabama and John Baci, Children's  
Hospital Boston/Harvard Medical School*
- 8:30 a.m. – 8:45 a.m.      **APC/PDAS Workshop 2 (Optimizing Part B Income & Expenses – Group 2)**  
*Leaders: Michael Talbert, MD, University of Oklahoma Health Sciences Center and  
Nancy Risenhoover, University of New Mexico*
- 8:45 a.m. – 9:00 a.m.      **APC/PDAS Workshop 3 (Optimizing Part A Income & Expenses – Group 1)**  
*Leaders: Stephen C. Peiper, MD, Thomas Jefferson University and Harry Pukey-  
Martin, Ohio State University*
- 9:00 a.m. – 9:15 a.m.      **APC/PDAS Workshop 4 (Optimizing Part A Income & Expenses – Group 2)**  
*Leaders: A. Julian Garvin, MD, PhD, Wake Forest University and Joseph Rondinelli,  
UMDNJ-New Jersey*
- 9:15 a.m. – 9:45 a.m.**      **Coffee Break & Exhibits**  
Spanish Ballroom Foyer

**Association of Pathology Chairs 2009 Annual Meeting**

*Pathology Practice and Management: Sharing Successes, Avoiding Failures and Preparing for the Future*

July 15-17, 2009

Fairmont Olympic Hotel, Seattle, Washington

- 9:45 a.m. – 10:00 a.m.      **APC/PDAS Workshop 5 (Optimizing Professional Component Billing Income & Expenses – Group 1)**  
*Leaders: Clifford Lowell, MD, PhD, University of California, San Francisco and Marcia McCall, Wake Forest University*
- 10:00 a.m. – 10:15 a.m.      **APC/PDAS Workshop 6 (Optimizing Professional Component Billing Income & Expenses – Group 2)**  
*Leaders: John Eble, MD, Indiana University and Douglas Karsch, University of Miami*
- 10:15 a.m. – 10:30 a.m.      **APC/PDAS Workshop 7 (Optimizing Outreach Income & Expenses – Group 1)**  
*Leaders: Roger A. Brumback, MD, Creighton University Medical Center and Thomas Dilts, Virginia Commonwealth University*
- 10:30 a.m. – 10:45 a.m.      **APC/PDAS Workshop 8 (Optimizing Outreach Income & Expenses – Group 2)**  
*Leaders: Jay L. Hess, MD, PhD, University of Michigan and Martha Miers, Vanderbilt University School of Medicine*
- 10:45 a.m. – 11:00 a.m.      Open Floor for General Discussion
- 11:00 a.m. – 12:00 p.m.**      **APC Strategic Planning**  
**2009-2015 APC Strategic Plan**  
**J. Charles Jennette, MD, President, APC**  
Spanish Ballroom
- 12:00 p.m. – 2:00 p.m.**      **APC Lunch and Business Meeting**  
The Garden
- 2:00 p.m. – 3:45 p.m.**      **The Future**  
Spanish Ballroom
- 2:00 p.m. – 3:00 p.m.      Market developments and trends affecting pathology  
*Dennis Weissman, MS, Dennis Weissman & Associates, LLC*
- 3:00 p.m. – 3:45 p.m.      The place of pathology in medical home initiatives  
*James M. Crawford, MD, PhD, North Shore – Long Island Jewish Medical Center*
- 4:00 p.m. – 5:00 p.m.**      **Standing Committee Meetings**
- Undergraduate Medical Education Committee**  
Belvedere Room
- Graduate Medical Education Committee**  
Kensington Room
- Research Committee**  
St. James Room
- Practice and Management Committee**  
Windsor Room
- 5:00 p.m. – 6:30 p.m.**      **APC Advocacy Committee Meeting**  
Rainier Room



**Association of Pathology Chairs 2009 Annual Meeting**  
*Pathology Practice and Management: Sharing Successes, Avoiding Failures and Preparing for the Future*  
July 15-17, 2009  
Fairmont Olympic Hotel, Seattle, Washington

**Friday, July 17, 2009**

**GENERAL INFORMATION:**

- 7:00 a.m. – 5:00 p.m. Meeting Registration  
Spanish Ballroom Foyer
- 7:00 a.m. – 8:00 a.m. Breakfast  
Spanish Ballroom Foyer

**SCIENTIFIC PROGRAM:**

- 8:00 a.m. – 12:00 p.m.** **APC Plenary II: Maintaining the Academic Mission: The Margin is not the Mission**  
Moderator: *Robert L. Hunter, MD, PhD, University of Texas - Houston*  
Spanish Ballroom
- 8:00 a.m. – 9:00 a.m. Research survey results and commentary  
*Peter E. Jensen, MD, University of Utah*
- 9:00 a.m. – 9:45 a.m. Balancing incentives for academic and clinical productivity  
*J. Charles Jennette, MD, University of North Carolina - Chapel Hill*
- 9:45 a.m. – 10:15 a.m.** **Coffee Break & Exhibits**
- 10:15 a.m. – 12:00 p.m. **APC Panel (optional for PDAS/CDS/PRODS)**  
Funding and incentivizing faculty to accomplish all missions (clinical, research, UME and GME) in lean times  
**Moderator:** *Tristram Parslow, MD, PhD, Emory University Hospital*  
**Panel:** *Barbara Ducatman, MD, Robert C Byrd HSC/West Virginia University, Janice Lage, MD, Medical University of South Carolina and Michael Prystowsky, MD, PhD, Montefiore Med Ctr/Albert Einstein Col of Med*
- 12:00 p.m. – 1:00 p.m.** **APC Lunch**  
The Garden Room
- 1:00 p.m. – 3:00 p.m.** **APC Plenary III (optional for PDAS/CDS/PRODS)**  
Moderator: *J. Charles Jennette, MD, President, APC*  
Spanish Ballroom
- 1:00 p.m. – 1:30 p.m. Teaching practice and management to residents  
*Susan Roseff, MD, Virginia Commonwealth University/MCV*
- 1:30 p.m. – 2:00 p.m. Status of fellowship application standardization  
*James M. Crawford, MD, PhD, North Shore – Long Island Jewish Medical Center*
- 2:00 p.m. – 2:30 p.m. APC Advocacy Committee report  
*Donald Karcher, MD, George Washington Univ. Medical Center*
- 2:30 p.m. – 3:00 p.m. Planning for annual meeting new format  
*President – Elect: Peter Jenson, MD, University of Utah*

**Association of Pathology Chairs 2009 Annual Meeting***Pathology Practice and Management: Sharing Successes, Avoiding Failures and Preparing for the Future*

July 15-17, 2009

Fairmont Olympic Hotel, Seattle, Washington

<b>3:00 p.m. – 3:30 p.m.</b>	<b>Coffee Break &amp; Exhibits</b> Spanish Ballroom Foyer
<b>3:30 p.m. – 5:00 p.m.</b>	<b>Reports of The American Board of Pathology's Cooperating Societies</b> ( <i>Presiding: Donald Karcher, MD</i> ) Spanish Ballroom
3:30 p.m. – 3:35 p.m.	College of American Pathologists <i>Stephen Bauer, MD, FCAP</i>
3:35 p.m. – 3:40 p.m.	United States and Canadian Academy of Pathology <i>Fred Silva, MD</i>
3:40 p.m. – 3:45 p.m.	American Medical Association Section Council on Pathology <i>Gregory Threatte, MD</i>
3:45 p.m. – 3:50 p.m.	American Society for Investigative Pathology <i>Stanley Cohen, MD</i>
3:50 p.m. – 3:55 p.m.	Academy of Clinical Laboratory Physicians and Scientists <i>C. Bruce Alexander, MD</i>
3:55 p.m. – 4:00 p.m.	The American Board of Pathology <i>Betsy Bennett, MD, PhD</i>
4:00 p.m. – 4:05 p.m.	American Society for Clinical Pathology <i>Barbara McKenna, MD</i>
4:05 p.m. – 4:10 p.m.	Association of Directors of Anatomic and Surgical Pathology <i>J. Allan Tucker, MD</i>
4:10 p.m. – 5:00 p.m.	Open Forum with Board and Society Representatives
5:00 p.m.	Meeting Adjourns

## PDAS Meeting Program



### Wednesday, July 15, 2009

#### GENERAL INFORMATION:

- |                       |   |
|-----------------------|---|
| 7:00 a.m. – 6:00 p.m. | Meeting Registration<br>Spanish Ballroom Foyer          |
| 7:00 a.m. – 8:00 a.m. | Breakfast<br>Spanish Ballroom Foyer                     |
| 7:00 a.m. – 7:30 a.m. | APC/PDAS Workshop Leader Orientation<br>Kensington Room |

#### SCIENTIFIC PROGRAM:

- |                                |  |
|--------------------------------|--|
| 8:00 a.m. – 8:05 a.m.          | Welcome & Meeting Objectives<br><i>J. Charles Jennette, MD, President, APC</i>   |
| <b>8:05 a.m. – 10:40 a.m.</b>  | <b>APC/PDAS Plenary I: Maximizing Clinical Margins</b><br><b>Spanish Ballroom</b>  |
| 8:05 a.m. – 8:10 a.m.          | Welcome<br>Moderator: <i>Robert L. Hunter, MD, PhD, University of Texas – Houston, and Chair, Practice Management Committee</i>  |
| 8:10 a.m. – 9:10 a.m.          | What does the future hold for payment for pathology Part B services?<br><i>Stephen Black Schaffer, MD, Massachusetts General Hospital</i>  |
| 9:10 a.m. – 9:50 a.m.          | Managed care contracting: At the table or on the menu<br><i>David S. Wilkinson, MD, PhD, Virginia Commonwealth University</i>  |
| 9:50 a.m. – 10:30 a.m.         | Professional component billing: Pathologists can not work for free<br><i>Robert DeCresce, MD, Rush-Presbyterian-St Luke's Med Ctr</i>  |
| 10:30 a.m. – 10:40 a.m.        | Orientation and goals for workshops<br><i>J. Charles Jennette, MD, University of North Carolina - Chapel Hill</i>  |
| <b>10:40 a.m. – 11:00 a.m.</b> | <b>Coffee Break and Exhibits</b><br>Spanish Ballroom Foyer   |
| <b>11:00 a.m. – 12:00 p.m.</b> | <b>APC/PDAS Workshops: A Call to Action (Part 1)</b><br><br><b>APC/PDAS Workshop 1 (Optimizing Part B Income &amp; Expenses – Group 1)</b><br><i>Leaders: J. Allan Tucker, MD, University of South Alabama and John Baci, Children's Hospital Boston/Harvard Medical School</i><br>Kensington Room<br><br><b>APC/PDAS Workshop 2 (Optimizing Part B Income &amp; Expenses – Group 2)</b><br><i>Leaders: Michael Talbert, MD, University of Oklahoma Health Sciences Center and Nancy Risenhoover, University of New Mexico</i><br>St. James Room |

# Association of Pathology Chairs 2009 Annual Meeting

*Pathology Practice and Management: Sharing Successes, Avoiding Failures and Preparing for the Future*

July 15-17, 2009

Fairmont Olympic Hotel, Seattle, Washington

## **APC/PDAS Workshop 3 (Optimizing Part A Income & Expenses – Group 1)**

*Leaders: Stephen C. Peiper, MD, Thomas Jefferson University and Harry Pukey-Martin, Ohio State University*

Belvedere Room

## **APC/PDAS Workshop 4 (Optimizing Part A Income & Expenses – Group 2)**

*Leaders: A. Julian Garvin, MD, PhD, Wake Forest University and Joseph Rondinelli, UMDNJ-New Jersey*

Windsor Room

## **APC/PDAS Workshop 5 (Optimizing Professional Component Billing Income & Expenses – Group 1)**

*Leaders: Clifford Lowell, MD, PhD, University of California, San Francisco and Marcia McCall, Wake Forest University*

Council Room

## **APC/PDAS Workshop 6 (Optimizing Professional Component Billing Income & Expenses – Group 2)**

*Leaders: John Eble, MD, Indiana University and Douglas Karsch, University of Miami*

Cabinet Room

## **APC/PDAS Workshop 7 (Optimizing Outreach Income & Expenses – Group 1)**

*Leaders: Roger A. Brumback, MD, Creighton University Medical Center and Thomas Dilts, Virginia Commonwealth University*

Senate Room

## **APC/PDAS Workshop 8 (Optimizing Outreach Income & Expenses – Group 2)**

*Leaders: Jay L. Hess, MD, PhD, University of Michigan and Martha Miers, Vanderbilt University School of Medicine*

Parliament Room

12:00 p.m. – 1:30 p.m.

## **APC/PDAS Lunch**

The Garden Room

1:30 p.m. – 2:30 p.m.

## **Practice and Management Survey Results and Discussion**

*Robert L. Hunter, MD, PhD, University of Texas – Houston*

Spanish Ballroom

2:30 p.m. – 3:00 p.m.

## **Coffee Break & Exhibits**

Spanish Ballroom Foyer

3:00 p.m. – 4:30 p.m.

## **APC/PDAS Plenary II: Pathologists Can Not Work for Free**

Spanish Ballroom

3:00 p.m. – 3:45 p.m.

How to negotiate a fair Part A contract: The pathology perspective

*Fred Gorstein, MD, Thomas Jefferson University Medical Center*

3:45 p.m. – 4:30 p.m.

How to negotiate a fair Part A contract: The hospitals perspective

*Patricia Sanders-Hall, MD, University of Kansas Hospital*

4:30 p.m. – 5:30 p.m.

## **Break (Free Time)**

5:30 p.m. – 6:30 p.m.

## **Opening Reception**

Spanish Ballroom Foyer

P  
D  
A  
S

**Association of Pathology Chairs 2009 Annual Meeting**  
*Pathology Practice and Management: Sharing Successes, Avoiding Failures and Preparing for the Future*  
July 15-17, 2009  
Fairmont Olympic Hotel, Seattle, Washington



**6:30 p.m. – 9:00 p.m.**

**Keynote Lecture and Banquet**  
Spanish Ballroom

6:30 p.m.

Welcome and Moment of Silence  
*J. Charles Jennette, MD, President, APC*

7:30 p.m.

Keynote Lecture: This drug's for you! Using the Geonome to Optimize Therapeutics  
*Howard McLeod, PharmD, Fred Eshelman Distinguished Professor of Pharmacogenomics and Individualized Therapy, University of North Carolina*

8:30 p.m.

Presentation of Distinguished Service Award to  
Jay M. McDonald, MD  
*Presented by J. Charles Jennette, MD, President, APC*  
*Tribute by C. Bruce Alexander, MD, University of Alabama at Birmingham*

**Thursday, July 16, 2009**

**GENERAL INFORMATION:**

7:00 a.m. – 5:00 p.m.

Meeting Registration  
Spanish Ballroom Foyer

7:00 a.m. – 8:00 a.m.

Breakfast  
Spanish Ballroom Foyer

**SCIENTIFIC PROGRAM:**

**8:00 a.m. – 11:00 a.m.**

**APC/PDAS Workshops: A Call to Action (Part 2)**  
*Moderators: Robert L. Hunter, MD, PhD, Chair, APC Practice and Management Committee and Marjel Whitmore, MPA, Chair, PDAS Council*  
Spanish Ballroom

8:00 a.m. – 8:15 a.m.

Welcome and Workshop Objectives

8:15 a.m. – 8:30 a.m.

**APC/PDAS Workshop 1 (Optimizing Part B Income & Expenses – Group 1)**  
*Leaders: J. Allan Tucker, MD, University of South Alabama and John Baci, Children's Hospital Boston/Harvard Medical School*

8:30 a.m. – 8:45 a.m.

**APC/PDAS Workshop 2 (Optimizing Part B Income & Expenses – Group 2)**  
*Leaders: Michael Talbert, MD, University of Oklahoma Health Sciences Center and Nancy Risenhoover, University of New Mexico*

8:45 a.m. – 9:00 a.m.

**APC/PDAS Workshop 3 (Optimizing Part A Income & Expenses – Group 1)**  
*Leaders: Stephen C. Peiper, MD, Thomas Jefferson University and Harry Pukey-Martin, Ohio State University*

9:00 a.m. – 9:15 a.m.

**APC/PDAS Workshop 4 (Optimizing Part A Income & Expenses – Group 2)**  
*Leaders: A. Julian Garvin, MD, PhD, Wake Forest University and Joseph Rondinelli, UMDNJ-New Jersey*

**9:15 a.m. – 9:45 a.m.**

**Coffee Break & Exhibits**  
Spanish Ballroom Foyer

**Association of Pathology Chairs 2009 Annual Meeting**  
*Pathology Practice and Management: Sharing Successes, Avoiding Failures and Preparing for the Future*  
 July 15-17, 2009  
 Fairmont Olympic Hotel, Seattle, Washington

**P  
D  
A  
S**

- |                                |   |
|--------------------------------|---|
| 9:45 a.m. – 10:00 a.m.         | <b>APC/PDAS Workshop 5 (Optimizing Professional Component Billing Income &amp; Expenses – Group 1)</b><br><i>Leaders: Clifford Lowell, MD, PhD, University of California, San Francisco and Marcia McCall, Wake Forest University</i> |
| 10:00 a.m. – 10:15 a.m.        | <b>APC/PDAS Workshop 6 (Optimizing Professional Component Billing Income &amp; Expenses – Group 2)</b><br><i>Leaders: John Eble, MD, Indiana University and Douglas Karsch, University of Miami</i>                                   |
| 10:15 a.m. – 10:30 a.m.        | <b>APC/PDAS Workshop 7 (Optimizing Outreach Income &amp; Expenses – Group 1)</b><br><i>Leaders: Roger A. Brumback, MD, Creighton University Medical Center and Thomas Dilts, Virginia Commonwealth University</i>                     |
| 10:30 a.m. – 10:45 a.m.        | <b>APC/PDAS Workshop 8 (Optimizing Outreach Income &amp; Expenses – Group 2)</b><br><i>Leaders: Jay L. Hess, MD, PhD, University of Michigan and Martha Miers, Vanderbilt University School of Medicine</i>                           |
| 10:45 a.m. – 11:00 a.m.        | Open Floor for General Discussion   |
| <b>11:00 a.m. – 12:00 p.m.</b> | <b>APC Strategic Planning<br/>2009-2015 APC Strategic Plan</b><br><b>J. Charles Jennette, MD, President, APC</b><br>Spanish Ballroom  |
| <b>12:00 p.m. – 2:00 p.m.</b>  | <b>PDAS Lunch</b><br>Parliament Room  |
| <b>2:00 p.m. – 3:45 p.m.</b>   | <b>The Future</b><br>Spanish Ballroom   |
| 2:00 p.m. – 3:00 p.m.          | Market developments and trends affecting pathology<br><i>Dennis Weissman, MS, Dennis Weissman &amp; Associates, LLC</i>   |
| 3:00 p.m. – 3:45 p.m.          | The place of pathology in medical home initiatives<br><i>James M. Crawford, MD, PhD, North Shore – Long Island Jewish Medical Center</i>  |
| <b>4:00 p.m. – 5:00 p.m.</b>   | <b>APC Standing Committee Meetings</b><br>(See APC Program)   |
| <b>5:00 p.m. – 6:30 p.m.</b>   | <b>APC Advocacy Committee Meeting</b><br>Rainier Room   |
| <b>4:30 p.m. – 6:30 p.m.</b>   | <b>PDAS Reception</b><br><i>Sponsored by CHI Solutions, Inc.</i><br>The Garden Room   |

**Friday, July 17, 2009**

**GENERAL INFORMATION:**

- |                       |  |
|-----------------------|--|
| 7:00 a.m. – 5:00 p.m. | Meeting Registration<br>Spanish Ballroom Foyer |
| 7:00 a.m. – 8:00 a.m. | Breakfast<br>Spanish Ballroom Foyer            |

**Association of Pathology Chairs 2009 Annual Meeting**  
*Pathology Practice and Management: Sharing Successes, Avoiding Failures and Preparing for the Future*  
 July 15-17, 2009  
 Fairmont Olympic Hotel, Seattle, Washington

**SCIENTIFIC PROGRAM:**

- |                                |  |
|--------------------------------|--|
| <b>8:00 a.m. – 12:00 p.m.</b>  | <b>PDAS Plenary I</b><br>Parliament Room   |
| <b>8:00 a.m. – 8:10 a.m.</b>   | <b>Welcome &amp; Meeting Objectives</b><br>Moderator: <i>Marjel Whitmore, MPA, Creighton University</i>  |
| 8:10 a.m. – 9:10 a.m.          | Laboratory Benchmarking Metrics for Academic Teaching Centers for Both AP and CP<br><i>Earl C. Buck, MT (ASCP), Chi Solutions, Inc.</i>  |
| 9:10 a.m. – 10:00 a.m.         | Top Strategies for Managing During an Economic Downturn<br><i>Wayne D. Mercer, PhD, Chi Solutions, Inc.</i>  |
| <b>10:00 a.m. – 10:15 a.m.</b> | <b>Coffee Break</b><br>Assembly Foyer  |
| 10:15 a.m. – 10:45 a.m.        | How are Universities Dealing with the Financial Crisis? (Dean's office perspective)<br><i>Fred Salzinger, MS, Creighton University</i>   |
| 10:45 a.m. – 11:15 a.m.        | How Does Pathology Remain Viable in the Current Economic Environment? (Practice Plan Perspective)<br><i>Raymond L. Stoupa, MBA, CPA, Creighton Medical Associates</i>                |
| 11:15 a.m. – 11:45 a.m.        | How to Handle Employee Issues During These Troubling Economic Times (Conflicts, Layoffs, Financial Woes) (Human Resources Perspective)<br><i>Kathy Custard, Creighton University</i> |
| 11:45 a.m. – 12:00 p.m.        | Wrap-up  |
| <b>12:00 p.m. – 1:00 p.m.</b>  | <b>PDAS Lunch</b><br>Parliament Room   |
| <b>1:00 p.m. – 3:00 p.m.</b>   | <b>APC Plenary III (optional for PDAS/CDS/PRODS)</b><br>Moderator: <i>J. Charles Jennette, MD, President, APC</i><br>Spanish Ballroom  |
| 1:00 p.m. – 1:30 p.m.          | Teaching practice and management to residents<br><i>Susan Roseff, MD, Virginia Commonwealth University/MCV</i>   |
| 1:30 p.m. – 2:00 p.m.          | Status of fellowship application standardization<br><i>James M. Crawford, MD, PhD, North Shore – Long Island Jewish Medical Center</i>   |
| 2:00 p.m. – 2:30 p.m.          | APC Advocacy Committee report<br><i>Donald Karcher, MD, George Washington Univ. Medical Center</i>   |
| 2:30 p.m. – 3:00 p.m.          | Planning for annual meeting new format<br><i>President – Elect: Peter Jenson, MD, University of Utah</i>   |
| <b>3:00 p.m. – 3:30 p.m.</b>   | <b>Coffee Break &amp; Exhibits</b><br>Spanish Ballroom Foyer   |



**Association of Pathology Chairs 2009 Annual Meeting**  
*Pathology Practice and Management: Sharing Successes, Avoiding Failures and Preparing for the Future*  
July 15-17, 2009  
Fairmont Olympic Hotel, Seattle, Washington

**P  
D  
A  
S**

<b>3:30 p.m. – 5:00 p.m.</b>	<b>Reports of The American Board of Pathology’s Cooperating Societies</b> <i>(Presiding: Donald Karcher, MD)</i> Spanish Ballroom
3:30 p.m. – 3:35 p.m.	College of American Pathologists <i>Stephen Bauer, MD, FCAP</i>
3:35 p.m. – 3:40 p.m.	United States and Canadian Academy of Pathology <i>Fred Silva, MD</i>
3:40 p.m. – 3:45 p.m.	American Medical Association Section Council on Pathology <i>Gregory Threatte, MD</i>
3:45 p.m. – 3:50 p.m.	American Society for Investigative Pathology <i>Stanley Cohen, MD</i>
3:50 p.m. – 3:55 p.m.	Academy of Clinical Laboratory Physicians and Scientists <i>C. Bruce Alexander, MD</i>
3:55 p.m. – 4:00 p.m.	The American Board of Pathology <i>Betsy Bennett, MD, PhD</i>
4:00 p.m. – 4:05 p.m.	American Society for Clinical Pathology <i>Barbara McKenna, MD</i>
4:05 p.m. – 4:10 p.m.	Association of Directors of Anatomic and Surgical Pathology <i>J. Allan Tucker, MD</i>
4:10 p.m. – 5:00 p.m.	Open Forum with Board and Society Representatives
5:00 p.m.	Meeting Adjourns



## PRODS Meeting Program

### Wednesday, July 15, 2009

#### GENERAL INFORMATION:

7:00 a.m. – 6:00 p.m. Meeting Registration  
Spanish Ballroom Foyer

#### SCIENTIFIC PROGRAM:

**2:00 p.m. – 5:00 p.m.** **PRODS Plenary I**  
**Workshop 1 – ASCP/APF – Moving Toward Solutions: Lab Management Training for Residents**  
*Barbara McKenna, MD, University of Michigan*  
*Susan Roseff, MD, Virginia Commonwealth University, MCV*  
*Ronald Weiss, MD, ARUP Labs, University of Utah*  
Congress Room

2:00 p.m. – 2:10 p.m. Welcome and Introductions  
*Stephen Black-Schaffer, MD, Massachusetts General Hospital*

2:10 p.m. – 2:40 p.m. Outline of the problem—what is the evidence?  
Drs. Weiss and McKenna

- a. APF observations
- b. Employer surveys
- c. ABP data
- d. RISE data

2:40 p.m. – 3:00 p.m. Survey of current practices in residency programs (Part I)  
Review of survey results and discussion, part one: How much time is devoted to laboratory management education, what is taught, and who teaches?  
Drs. Weiss and McKenna

**3:00 p.m. – 3:15 p.m.** **Break**  
Assembly Foyer

3:15 p.m. – 3:35 p.m. Review of survey results (Part II)  
What instructional and evaluation tools are effective, what are the obstacles to teaching and the resources needed?  
Drs. Weiss and McKenna

3:35 p.m. – 4:05 p.m. What defines a good program? How do we find out?  
Drs. Weiss and McKenna

4:05 p.m. – 4:35 p.m. Open discussion/ sharing of ideas

4:35 p.m. – 4:50 p.m. Wrap up & Summary  
Drs. Roseff and McKenna

4:50 p.m. – 5:00 p.m. Closing remarks  
Dr. Black-Schaffer

**Association of Pathology Chairs 2009 Annual Meeting**  
*Pathology Practice and Management: Sharing Successes, Avoiding Failures and Preparing for the Future*  
 July 15-17, 2009  
 Fairmont Olympic Hotel, Seattle, Washington

- 5:30 p.m. – 6:30 p.m.**      **Opening Reception**  
 Spanish Ballroom Foyer
- 6:30 p.m. – 9:00 p.m.**      **Keynote Lecture and Banquet**  
 Spanish Ballroom
- 6:30 p.m.      Welcome and Moment of Silence  
*J. Charles Jennette, MD, President, APC*
- 7:30 p.m.      Keynote Lecture: This drug's for you! Using the Geonome to Optimize  
 Therapeutics  
*Howard McLeod, PharmD, Fred Eshelman Distinguished Professor of  
 Pharmacogenomics and Individualized Therapy, University of North Carolina*
- 8:30 p.m.      Presentation of Distinguished Service Award to  
 Jay M. McDonald, MD  
*Presented by J. Charles Jennette, MD, President, APC*  
*Tribute by C. Bruce Alexander, MD, University of Alabama at Birmingham*

**Thursday, July 16, 2009**

**GENERAL INFORMATION:**

- 7:00 a.m. – 5:00 p.m.      Meeting Registration  
 Spanish Ballroom Foyer
- 7:00 a.m. – 8:00 a.m.      Breakfast  
 Spanish Ballroom Foyer

**SCIENTIFIC PROGRAM:**

- 8:00a.m. – 12:00 p.m.**      **PRODS II**  
 Congress Room
- 8:15 a.m. – 9:45 a.m.      **Disaster Planning: Is Your Pathology Course and Residency Program  
 Ready? (CDS & PRODS Joint Session)**  
*Kevin Krane, MD, Tulane University School of Medicine*  
*Suzanne Powell, MD, Methodist Hospital System*  
*Byron Crawford, MD, Tulane University School of Medicine*  
*Juan P. Olano, MD, University of Texas Medical Branch – Galveston*  
 Congress Room
- 9:45 a.m. – 10:15 a.m.**      **Break**  
 Assembly Foyer
- 10:15 a.m. – 10:45 a.m.**      **Workshop (2, 3, and 4) Introductions**  
 Congress Room
- 10:15 a.m. – 10:25 a.m.      Workshop 2 Intro – ABP – Certification, Examination and Education  
*C. Bruce Alexander, MD, University of Alabama at Birmingham Medical  
 Center*  
*Betsy Bennett, MD, PhD, American Board of Pathology*  
*Wesley Naritoku, MD, PhD, University of Southern  
 California/LAC+USC/Keck School of Medicine*

**Association of Pathology Chairs 2009 Annual Meeting**  
*Pathology Practice and Management: Sharing Successes, Avoiding Failures and Preparing for the Future*  
July 15-17, 2009  
Fairmont Olympic Hotel, Seattle, Washington

- 10:25 a.m. – 10:35 a.m.      **Workshop 3 Intro – CAP – Adaptive Change for Emerging Practice**  
*Robert Hoffman, MD, PhD, Vanderbilt University*  
*Suzanne Powell, MD, Methodist Hospital Systems*  
*Michael Talbert, MD, University of Oklahoma Health Sciences Center*
- 10:35 a.m. – 10:45 a.m.      **Workshop 4 Intro – ACGME – Duty Hours and Taxonomy for GME**  
*Stephen Black-Schaffer, MD, Massachusetts General Hospital*  
*Rebecca Johnson, MD, Berkshire Health Systems*  
*Gayle Winters, MD, Brigham & Women's Hospital*
- 10:45 a.m. – 12:30 p.m.      Workshops (2, 3 and 4)**
- Workshop 2 – ABP – Certification, Examination and Education  
*C. Bruce Alexander, MD, University of Alabama at Birmingham Medical Center*  
*Betsy Bennett, MD, PhD, The American Board of Pathology*  
*Wesley Naritoku, MD, PhD, University of Southern California/LAC+USC/Keck School of Medicine*  
Belvedere Room
- Workshop 3 – CAP – Adaptive Change for Emerging Practice  
*Robert Hoffman, MD, PhD, AntiCancer, Inc*  
*Suzanne Powell, MD, Methodist Hospital Systems*  
*Michael Talbert, MD, University of Oklahoma Health Sciences Center*  
Kensington Room
- Workshop 4 – ACGME – Duty Hours and Taxonomy for GME  
*Stephen Black-Schaffer, MD, Massachusetts General Hospital*  
*Rebecca Johnson, MD, Berkshire Health Systems*  
*Gayle Winters, MD, Brigham & Women's Hospital*  
St. James Room
- 12:30 p.m. – 2:00 p.m.      PRODS Business Lunch**  
ASCP RC and CAP RF Presentations  
*Stephen Black-Schaffer, MD, Massachusetts General Hospital*  
Congress Room
- 2:00 p.m. – 3:30 p.m.      Presentation/Discussion – Workshops 1, 2, 3 and 4**  
Congress Room
- 3:30 p.m. – 3:45 p.m.      Break**  
Assembly Foyer
- 3:45 p.m. – 4:30 p.m.      PRODS Special Topics (Portfolio, Milestones, MOC and more)**  
*Betsy Bennett, MD, PhD, American Board of Pathology*  
*Rebecca Johnson, MD, Berkshire Health Systems*  
*Lija Joseph, MD, Boston University*  
Congress Room
- 4:30 p.m. – 5:00 p.m.      PRODS Open Microphone & Wrap-Up**  
*Stephen Black-Schaffer, MD, Massachusetts General Hospital*  
Congress Room
- 5:00 p.m. – 6:30 p.m.      APC Advocacy Committee Meeting**  
Rainier Room

**Association of Pathology Chairs 2009 Annual Meeting**  
*Pathology Practice and Management: Sharing Successes, Avoiding Failures and Preparing for the Future*  
July 15-17, 2009  
Fairmont Olympic Hotel, Seattle, Washington

**Friday, July 17, 2009**

**GENERAL INFORMATION:**

7:00 a.m. – 5:00 p.m. Meeting Registration  
Spanish Ballroom Foyer

7:00 a.m. – 8:00 a.m. Breakfast  
Spanish Ballroom Foyer

**SCIENTIFIC PROGRAM:**

- 8:00 a.m. – 9:45 a.m.** **New PRODS Welcome and Q&A**  
**PRODS Council**  
**ABP** (*Rebecca Johnson, MD, Berkshire Health Systems, Betsy Bennett, MD, PhD, American Board of Pathology*)  
**ACGME** (*Rebecca Johnson, MD, Berkshire Health Systems, Suzanne Powell, MD, Methodist Hospital Systems & Wesley Naritoku, MD, PhD, University of Southern California/LAC+USC/Keck School of Medicine*)  
Congress Room
- 9:45 a.m. – 10:15 a.m.** **Coffee Break & Exhibits**  
Spanish Ballroom Foyer
- 10:15 a.m. – 12:00 p.m.** **APC Panel (optional for PDAS/CDS/PRODS)**  
**Spanish Ballroom**  
Funding and incentivizing faculty to accomplish all missions (clinical, research, UME and GME) in lean times  
**Moderator:**  
*Tristram Parslow, MD, PhD, Emory University Hospital*  
**Panel:**  
*Barbara Ducatman, MD, Robert C Byrd HSC/West Virginia University, Janice Lage, MD, Medical University of South Carolina, Michael Prystowsky, MD, PhD, Montefiore Med Ctr/Albert Einstein Col of Med*
- 12:00 p.m. – 1:00 p.m.** **PRODS Lunch**  
Congress Room
- 1:00 p.m. – 3:00 p.m.** **APC Plenary III (optional for PDAS/CDS/PRODS)**  
Spanish Ballroom
- 1:00 p.m. – 1:30 p.m. Teaching practice and management to residents  
*Susan Roseff, MD, Virginia Commonwealth University/MCV*
- 1:30 p.m. – 2:00 p.m. Status of fellowship application standardization  
*James M. Crawford, MD, PhD, North Shore – Long Island Jewish Medical Center*
- 2:00 p.m. – 2:30 p.m. APC Advocacy Committee report  
*Donald Karcher, MD, George Washington Univ. Medical Center*
- 2:30 p.m. – 3:00 p.m. Planning for annual meeting new format  
*President – Elect: Peter Jenson, MD, University of Utah*

**Association of Pathology Chairs 2009 Annual Meeting**  
*Pathology Practice and Management: Sharing Successes, Avoiding Failures and Preparing for the Future*  
July 15-17, 2009  
Fairmont Olympic Hotel, Seattle, Washington

<b>3:00 p.m. – 3:30 p.m.</b>	<b>Coffee Break &amp; Exhibits</b> Spanish Ballroom Foyer
<b>3:30 p.m. – 5:00 p.m.</b>	<b>Reports of American Board of Pathology's Cooperating Societies</b> (Presiding: Donald Karcher, MD) Spanish Ballroom
3:30 p.m. – 3:35 p.m.	College of American Pathologists <i>Stephen Bauer, MD, FCAP</i>
3:35 p.m. – 3:40 p.m.	United States and Canadian Academy of Pathology <i>Fred Silva, MD</i>
3:40 p.m. – 3:45 p.m.	American Medical Association Section Council on Pathology <i>Gregory Threatte, MD</i>
3:45 p.m. – 3:50 p.m.	American Society for Investigative Pathology <i>Stanley Cohen, MD</i>
3:50 p.m. – 3:55 p.m.	Academy of Clinical Laboratory Physicians and Scientists <i>C. Bruce Alexander, MD</i>
3:55 p.m. – 4:00 p.m.	The American Board of Pathology <i>Betsy Bennett, MD, PhD</i>
4:00 p.m. – 4:05 p.m.	American Society for Clinical Pathology <i>Barbara McKenna, MD</i>
4:05 p.m. – 4:10 p.m.	Association of Directors of Anatomic and Surgical Pathology <i>J. Allan Tucker, MD</i>
4:10 p.m. – 5:00 p.m.	Open Forum with Board and Society Representatives
5:00 p.m.	Meeting Adjourns

## CDS Meeting Program

### Wednesday, July 15, 2009

#### GENERAL INFORMATION:

7:00 a.m. – 6:00 p.m. Meeting Registration  
Spanish Ballroom Foyer

#### SCIENTIFIC PROGRAM:

**5:30 p.m. – 6:30 p.m. Opening Reception**  
Spanish Ballroom Foyer

**6:30 p.m. – 9:00 p.m. Keynote Lecture and Banquet**  
**Spanish Ballroom**

6:30 p.m. Welcome and Moment of Silence  
*J. Charles Jennette, MD, President, APC*

7:30 p.m. Keynote Lecture: This drug's for you! Using the Geonome to Optimize  
Therapeutics  
*Howard McLeod, PharmD, Fred Eshelman Distinguished Professor of  
Pharmacogenomics and Individualized Therapy, University of North Carolina*

8:30 p.m. Presentation of Distinguished Service Award to  
Jay M. McDonald, MD  
*Presented by J. Charles Jennette, MD, President, APC  
Tribute by C. Bruce Alexander, MD, University of Alabama at Birmingham*

### Thursday, July 16, 2009

#### GENERAL INFORMATION:

7:00 a.m. – 5:00 p.m. Meeting Registration  
Spanish Ballroom Foyer

7:00 a.m. – 8:00 a.m. Breakfast  
Spanish Ballroom Foyer

#### SCIENTIFIC PROGRAM:

8:00 a.m. – 8:15 a.m. Opening Remarks  
*Byron Crawford, MD, Tulane University School of Medicine*  
Congress Room

**8:15 a.m. – 9:45 a.m. Disaster Planning: Is Your Pathology Course and Residency Program  
Ready? (CDS & PRODS Joint Session)**  
*Kevin Krane, MD, Tulane University*  
*Suzanne Powell, MD, Methodist Hospital System*  
*Byron Crawford, MD, Tulane University*  
*Juan P. Olano, MD, University of Texas Medical Branch - Galveston*  
Congress Room

**Association of Pathology Chairs 2009 Annual Meeting**  
*Pathology Practice and Management: Sharing Successes, Avoiding Failures and Preparing for the Future*  
July 15-17, 2009  
Fairmont Olympic Hotel, Seattle, Washington

- 9:45 a.m. – 10:15 a.m.**                    **Break**  
Assembly Foyer
- 10:15 a.m. – 11:45 a.m.**                **Different Approaches to Integrated Curriculum: An Interactive Session**  
*Elaine L. Bearer, MD, PhD, Brown University*  
*Lija Joseph, MD, Boston University*  
*Henry Sanchez, MD, University of California, San Francisco*  
*Nancy Rosenthal, MD, University of Iowa College of Medicine*  
*Carolyn Cambor, MD, University of Pennsylvania*  
Senate Room
- 11:45 a.m. – 1:50 p.m.**                **CDS Lunch/Business Meeting**  
Council Room
- 1:50 p.m. – 2:40 p.m.**                **The Role of a Pathology Course Director in LCME Accreditation of a Medical School**  
*Dan Hunt, MD, MBA, Association of American Medical Colleges*  
Senate Room
- 2:40 p.m. – 3:10 p.m.**                **Break**  
Assembly Foyer
- 3:10 p.m. – 4:00 p.m.**                **Update from NBME: The Future of the Gateway Exam and New NBME Customized Assessment Exams**  
*Peter Katsufraakis, MD, National Board of Medical Examiners*  
Senate Room
- 4:00 p.m. – 5:00 p.m.**                **APC/UME Committee Meeting**  
*Chaired by: Michael Cohen, MD, University of Iowa*  
Belvedere Room

**Friday, July 17, 2009**

**GENERAL INFORMATION:**

- 7:00 a.m. – 5:00 p.m.                Meeting Registration  
Spanish Ballroom Foyer
- 7:00 a.m. – 8:00 a.m.                Breakfast  
Spanish Ballroom Foyer

**SCIENTIFIC PROGRAM:**

- 8:00 a.m. – 8:15 a.m.                Opening Remarks  
*Byron Crawford, MD, Tulane University School of Medicine*  
Senate Room
- 8:15 a.m. – 9:45 a.m.**                **Financing Undergraduate Medical Education – Panel Discussion**  
**Moderator:** *Michele Raible, MD, PharmD, Oakland University William Beaumont School of Medicine*  
**Panel:** *Mark Tykocinski, MD, Thomas Jefferson University School of Medicine, Robert Folberg, MD, Oakland University William Beaumont School of Medicine, Barbara Atkinson, MD, University of Kansas School of Medicine, Tana Grady-Weliky, MD, Oregon Health, and Science University and Fred Salzinger, MS, Creighton University*  
Senate Room



**Association of Pathology Chairs 2009 Annual Meeting**  
*Pathology Practice and Management: Sharing Successes, Avoiding Failures and Preparing for the Future*  
 July 15-17, 2009  
 Fairmont Olympic Hotel, Seattle, Washington

- |                                |  |
|--------------------------------|--|
| <b>9:45 a.m. – 10:15 a.m.</b>  | <b>Break</b><br>Spanish Ballroom Foyer   |
| <b>10:15 a.m. – 12:00 p.m.</b> | <b>APC Panel (optional for PDAS/CDS/PRODS)</b><br>Funding and incentivizing faculty to accomplish all missions (clinical, research, UME and GME) in lean times<br><b>Moderator:</b> <i>Tristram Parslow, MD, PhD, Emory University Hospital</i><br><b>Panel:</b> <i>Barbara Ducatman, MD, Robert C Byrd HSC/West Virginia University, Janice Lage, MD, Medical University of South Carolina and Michael Prystowsky, MD, PhD, Montefiore Med Ctr/Albert Einstein Col of Med</i><br>Spanish Ballroom |
| <b>12:00 p.m. – 1:00 p.m.</b>  | <b>CDS Lunch/Presentation</b><br><b>Flash-Based Interactive Pathology Case Modules for Medical Student Education</b><br><i>John Woosley, MD, PhD, University of North Carolina</i><br>Senate Room  |
| <b>1:00 p.m. – 2:00 p.m.</b>   | <b>Science in the Medical Curriculum: What are the Competencies? (An Interactive Panel Discussion)</b><br><i>Vinay Kumar, MBBS, MD, FRCPath, University of Chicago School of Medicine</i><br><i>Nelson Fausto, MD, University of Washington</i><br><i>Brent Harris, MD, PhD, Dartmouth Medical School</i><br>Senate Room   |
| <b>2:00 p.m. – 2:30 p.m.</b>   | <b>APC Advocacy Committee report</b><br><i>Donald Karcher, MD, George Washington Univ. Medical Center</i><br>Spanish Ballroom  |
| <b>2:30 p.m. – 3:00 p.m.</b>   | <b>Planning for annual meeting new format</b><br><i>President – Elect: Peter Jensen, MD, University Utah</i><br>Spanish Ballroom   |
| <b>3:00 p.m. – 3:30 p.m.</b>   | <b>Coffee Break &amp; Exhibits</b><br>Spanish Ballroom Foyer   |
| <b>3:30 p.m. – 5:00 p.m.</b>   | <b>Reports of ABP Cooperating Societies (see APC Program)</b><br>Spanish Ballroom  |
| <b>5:00 p.m.</b>               | Meeting Adjourns   |

**C  
D  
S**



**Association of Pathology Chairs 2009 Annual Meeting**  
*Pathology Practice and Management: Sharing Successes, Avoiding Failures and Preparing for the Future*  
July 15-17, 2009  
Fairmont Olympic Hotel, Seattle, Washington

- 9:45 a.m. – 10:15 a.m.**            **Break**  
Assembly Foyer
- 10:15 a.m. – 11:45 a.m.**        **Different Approaches to Integrated Curriculum: An Interactive Session**  
*Elaine L. Bearer, MD, PhD, Brown University*  
*Lija Joseph, MD, Boston University*  
*Henry Sanchez, MD, University of California, San Francisco*  
*Nancy Rosenthal, MD, University of Iowa College of Medicine*  
*Carolyn Cambor, MD, University of Pennsylvania*  
Senate Room
- 11:45 a.m. – 1:50 p.m.**        **CDS Lunch/Business Meeting**  
Council Room
- 1:50 p.m. – 2:40 p.m.**        **The Role of a Pathology Course Director in LCME Accreditation of a Medical School**  
*Dan Hunt, MD, MBA, Association of American Medical Colleges*  
Senate Room
- 2:40 p.m. – 3:10 p.m.**        **Break**  
Assembly Foyer
- 3:10 p.m. – 4:00 p.m.**        **Update from NBME: The Future of the Gateway Exam and New NBME Customized Assessment Exams**  
*Peter Katsufraakis, MD, National Board of Medical Examiners*  
Senate Room
- 4:00 p.m. – 5:00 p.m.**        **APC/UME Committee Meeting**  
*Chaired by: Michael Cohen, MD, University of Iowa*  
Belvedere Room

**Friday, July 17, 2009**

**GENERAL INFORMATION:**

- 7:00 a.m. – 5:00 p.m.        Meeting Registration  
Spanish Ballroom Foyer
- 7:00 a.m. – 8:00 a.m.        Breakfast  
Spanish Ballroom Foyer

**SCIENTIFIC PROGRAM:**

- 8:00 a.m. – 8:15 a.m.        Opening Remarks  
*Byron Crawford, MD, Tulane University School of Medicine*  
Senate Room
- 8:15 a.m. – 9:45 a.m.**        **Financing Undergraduate Medical Education – Panel Discussion**  
**Moderator:** *Michele Raible, MD, PharmD, Oakland University William Beaumont School of Medicine*  
**Panel:** *Mark Tykocinski, MD, Thomas Jefferson University School of Medicine, Robert Folberg, MD, Oakland University William Beaumont School of Medicine, Barbara Atkinson, MD, University of Kansas School of Medicine, Tana Grady-Weliky, MD, Oregon Health, and Science University and Fred Salzinger, MS, Creighton University*  
Senate Room



**Association of Pathology Chairs 2009 Annual Meeting**  
*Pathology Practice and Management: Sharing Successes, Avoiding Failures and Preparing for the Future*  
 July 15-17, 2009  
 Fairmont Olympic Hotel, Seattle, Washington

- |                                |  |
|--------------------------------|--|
| <b>9:45 a.m. – 10:15 a.m.</b>  | <b>Break</b><br>Spanish Ballroom Foyer   |
| <b>10:15 a.m. – 12:00 p.m.</b> | <b>APC Panel (optional for PDAS/CDS/PRODS)</b><br>Funding and incentivizing faculty to accomplish all missions (clinical, research, UME and GME) in lean times<br><b>Moderator:</b> <i>Tristram Parslow, MD, PhD, Emory University Hospital</i><br><b>Panel:</b> <i>Barbara Ducatman, MD, Robert C Byrd HSC/West Virginia University, Janice Lage, MD, Medical University of South Carolina and Michael Prystowsky, MD, PhD, Montefiore Med Ctr/Albert Einstein Col of Med</i><br>Spanish Ballroom |
| <b>12:00 p.m. – 1:00 p.m.</b>  | <b>CDS Lunch/Presentation</b><br><b>Flash-Based Interactive Pathology Case Modules for Medical Student Education</b><br><i>John Woosley, MD, PhD, University of North Carolina</i><br>Senate Room  |
| <b>1:00 p.m. – 2:00 p.m.</b>   | <b>Science in the Medical Curriculum: What are the Competencies? (An Interactive Panel Discussion)</b><br><i>Vinay Kumar, MBBS, MD, FRCPath, University of Chicago School of Medicine</i><br><i>Nelson Fausto, MD, University of Washington</i><br><i>Brent Harris, MD, PhD, Dartmouth Medical School</i><br>Senate Room   |
| <b>2:00 p.m. – 2:30 p.m.</b>   | <b>APC Advocacy Committee report</b><br><i>Donald Karcher, MD, George Washington Univ. Medical Center</i><br>Spanish Ballroom  |
| <b>2:30 p.m. – 3:00 p.m.</b>   | <b>Planning for annual meeting new format</b><br><i>President – Elect: Peter Jensen, MD, University Utah</i><br>Spanish Ballroom   |
| <b>3:00 p.m. – 3:30 p.m.</b>   | <b>Coffee Break &amp; Exhibits</b><br>Spanish Ballroom Foyer   |
| <b>3:30 p.m. – 5:00 p.m.</b>   | <b>Reports of ABP Cooperating Societies (see APC Program)</b><br>Spanish Ballroom  |
| <b>5:00 p.m.</b>               | Meeting Adjourns   |

**C  
D  
S**

**Association of Pathology Chairs 2009 Annual Meeting**  
*Pathology Practice and Management: Sharing Successes, Avoiding Failures and Preparing for the Future*  
July 15-17, 2009  
Fairmont Olympic Hotel, Seattle, Washington

**List of Participants**  
**(Pre-Registered as of July 1, 2009)**

Seena Aisner  
UMDNJ-New Jersey Med Sch  
185 So Orange Avenue  
MSB/C579  
Newark, NJ 7103  
USA  
aisnersc@umdnj.edu

C. Bruce Alexander  
U Alabama at Birmingham Med Ctr  
619 S 19th St South  
Rm WP-P220  
Birmingham, AL 35249-7331  
USA  
cba@uab.edu

John Anastasi  
Univ of Chicago Sch of Med  
5841 S Maryland Avenue  
MC0008/TW055  
Chicago, IL 60637  
USA  
john.anastasi@uchospitals.edu

Scott Anderson  
U Vermont College of Medicine  
89 Beaumont Drive  
Burlington, VT 5405  
USA  
scott.anderson@vtmednet.org

Douglas Anthony  
Univ of Missouri-Columbia  
One Hospital Drive  
M263 Medical Science Bldg.  
Columbia, MO 65212  
USA  
anthonydc@health.missouri.edu

Barbara Atkinson  
U Kansas School of Medicine  
3901 Rainbow Blvd, MS 2015  
Kansas City, KS 66160-7300  
USA  
batkinson@kumc.edu

Paul Bachner  
U Kentucky Coll of Med, MS-119  
800 Rose St, MS119  
Lexington, KY 40536-0298  
USA  
bachner@email.uky.edu

John Baci  
Children's Hospital Boston /  
Harvard Medical School  
300 Longwood Avenue  
Dept Of Pathology - Bader 138  
Boston, MA 2115  
USA  
john.baci@childrens.harvard.edu

Christine Bales  
St Louis University HSC Sch of  
Med  
1402 South Grand Boulevard  
St Louis, MO 63104  
USA  
cbales@slu.edu

John R Ball  
ASCP  
33 West Monroe  
Suite-1600  
Chicago, IL 60603  
USA  
john.ball@ascp.org

Stephen N. Bauer  
Mercy San Juan Hospital  
Laboratory  
6501 Coyle Ave  
Carmichael, CA 95608  
USA  
sbauer@chw.edu

Elaine Bearer  
Brown University  
70 Ship Street  
Providence, RI 2903  
USA  
elaine\_bearer@brown.edu

Frederick Behm  
University of Illinois at Chicago  
Department Of Pathology, M/C  
847  
840 S. Wood Street  
Chicago, IL 60612  
USA  
fredbehm@uic.edu

Rick Bell  
Mopec  
21750 Collidge Highway  
Oak Park, MI 48237  
USA  
rbell@mopec.com

Betsy D. Bennett  
American Board of Pathology  
4830 W. Kennedy Blvd  
Suite 690  
Tampa, FL 33609  
USA  
bdbennett@abpath.org

Cynthia Bevis  
North Shore-Long Island Jewish  
Medical Center  
10 Nevada Drive  
Lake Success, NY 11042  
USA  
cbevis@nshs.edu

Shivayogi R. Bhusnurmath  
St. George's Univ Sch of Med  
PO Box 7, True Blue  
St. George's,  
GRENADA  
sbhusnurmath@sgu.edu

Bharti Bhusnurmath  
St George's Univ Sch of Med  
P O Box 7  
St George's,  
GRENADA  
bbhusnurmath@sgu.edu

Steven A. Bigler  
U Mississippi Medical Center  
2500 N State Street  
Jackson, MS 39216-4505  
USA  
sbigler@pathology.umsmed.edu

W. Stephen Black-Schaffer  
Massachusetts General Hospital  
55 Fruit Street  
Warren 214  
Boston, MA 2114  
USA  
sblackschaffer@partners.org

John Bolg  
Medical College of Ohio (aka  
University of Toledo)  
3000 Arlington Ave  
Toledo, OH 43614-2598  
USA  
john.bolg@utoledo.edu

## Association of Pathology Chairs 2009 Annual Meeting

*Pathology Practice and Management: Sharing Successes, Avoiding Failures and Preparing for the Future*

July 15-17, 2009

Fairmont Olympic Hotel, Seattle, Washington

Thomas Bollinger  
Orlando Regional Med Ctr  
1414 Kuhl Ave  
Orlando, FL 32806  
USA  
thomas.bollinger@orhs.org

Donald M. Bowen  
U Alabama at Birmingham Medical  
Center  
500 South 22nd Street  
Suite 404  
Birmingham, AL 35233  
USA  
bowen@uab.edu

Mark D. Brissette  
Denver VA Medical Center  
1610 Little Raven Street, 508  
Denver, CA 80202-6180  
USA  
mark.brissette@va.gov

Michael Brown  
American Pathology Foundation  
1540 S. Coast Highway  
Suite 203  
Laguna Beach, CA 92651  
USA  
mbrown@ypii.com

Marie Brown  
Mayo Clinic Rochester -  
Department of Laboratory  
Medicine and Pathology  
200 1st Street Sw  
Hilton 530  
Rochester, MN 55905  
US  
brown.marie@mayo.edu

J. Gary Brown  
U Colorado School of Medicine  
Mail Stop B216  
12631 East 17th Ave, L15-2219  
Aurora, CO 80045  
USA  
Gary.Brown@UCHSC.edu

Leslie A. Bruch  
Univ of Iowa College of Medicine  
200 Hawkins Drive  
5239-D RCP  
Iowa City, IA 52242  
USA  
leslie-bruch@uiowa.edu

Roger A. Brumback  
Creighton University Medical  
Center  
Suite-2469  
USA  
RogerBrumback@creighton.edu

Earl Buck  
Chi Solutions  
Vice President  
903 Airport Drive, Suite 3  
Ann Arbor, MI 48108  
USA  
ebuck@chisolutionsinc.com

Mary Bunker  
Univ California, San Francisco  
School of Medicine  
185 Berry Street  
Lobby 2, Suite 100, Box 0506  
San Francisco, CA 94107  
USA  
mary.bunker@ucsf.edu

Evan Cadoff  
UMDNJ-Robert Wood Johnson  
Med School  
1 Robert Wood Johnson Place  
MEB 212  
New Brunswick, NJ 8903  
USA  
cadoff@umdnj.edu

Richard Callahan  
IMPAC Medical Systems, Inc.  
100 Mathilda Place  
5th Floor  
Sunnyvale, CA 94086  
USA  
rcallahan@impac.com

Carolyn L. Cambor  
Univ of Pennsylvania Sch of Med  
3400 Spruce St, 6 Gates  
7.103 Founder Bldg., MC 4283  
Philadelphia, PA 19104  
USA  
camborc@uphs.upenn.edu

Michael J. Clare-Salzler  
U Florida  
PO Box 100275  
Gainesville, FL 32610  
USA  
salzler@pathology.ufl.edu

Elizabeth Cochran  
Rush-Presbyterian-St Luke's  
Medical Ctr  
1750 W. Harrison Street  
Chicago, IL 60612  
USA  
elizabeth\_cochran@rush.edu

Franklin Cockerill  
Mayo Clinic  
200 First Street SW  
Hilton 530  
Rochester, MN 55905  
USA  
cockerill.franklin@mayo.edu

Stanley Cohen  
UMDNJ-New Jersey Med Sch  
185 S Orange Ave  
MSB C579  
Newark, NJ 07103-2714  
USA  
cohenst@umdnj.edu

Michael Cohen  
Univ of Iowa College of Medicine  
200 Hawkins Dr  
Rm- C660.6h  
Iowa City, IA 52242-1087  
USA  
michael-cohen@uiowa.edu

Richard Conran  
Uniformed Services University  
Health Sciences  
4301 Jones Bridge Road  
Bethesda, MD 20814  
USA  
rconran@usuhs.mil

Gretchen Crary  
Hennepin County Medical  
Examiner's Office  
701 Park Avenue - Mail Code PL  
Minneapolis, MN 55415  
USA  
gretchen.crary@hcmcd.org

James M. Crawford  
North Shore-Long Island Jewish  
Medical Center  
10 Nevada Drive  
Lake Success, NY 11042  
USA  
jcrawford1@nshs.edu

## Association of Pathology Chairs 2009 Annual Meeting

*Pathology Practice and Management: Sharing Successes, Avoiding Failures and Preparing for the Future*

July 15-17, 2009

Fairmont Olympic Hotel, Seattle, Washington

Byron Crawford  
Tulane Univ School of Medicine  
1430 Tulane Avenue  
SL-79  
New Orleans, LA 70112-1393  
USA  
bcrawfo@tulane.edu

David Crossman  
Drexel Univ Coll of Med  
245 N 15th Street  
Rm-5110, Mail Stop 435  
Philadelphia, PA 19102-1192  
USA  
david.crossman@drexelmed.edu

John T. Crosson  
U Minnesota  
420 Delaware St SE, MMC 609  
Minneapolis, MN 55455-0392  
USA  
john.crosson@hcmcd.org

Erika C. Crouch  
Washington University, School of  
Medicine  
660 S Euclid Ave  
St Louis, MO 63110  
USA  
crouch@wustl.edu

Daniel Crusier  
Brooke Army Medical Center  
3851 Roger Brooke Drive  
Ft Sam Houston, TX 78234-6200  
USA  
daniel.cruiser@amedd.army.mil

Kathy Custard  
Creighton University  
2500 California Plaza  
Omaha NE 68178  
USA  
kas12760@creighton.edu

Brian Datnow  
Univ of California, San Diego Sch  
of Medicine  
200 W Arbor Drive  
#8720, Room 2-120  
San Diego, CA 92037-8720  
USA  
bdatnow@ucsd.edu

Robert DeCresce  
Rush-Presby-St Luke's Med Ctr  
1653 W Congress Pkwy  
Chicago, IL 60612-3864  
USA  
Robert\_DeCresce@rush.edu

Julie DeSantis  
IMPAC Medical Systems, Inc.  
100 Mathilda Place  
5th Floor  
Sunnyvale, CA 94086  
USA  
jdesantis@impac.com

Tim Dick  
Aurora Interactive Ltd.  
1425 Rene-Levesque Wst #906  
Montreal, QC H36 1T7  
Canada  
tdick@auroramsc.com

Thomas Dilts  
Virginia Commonwealth University  
1101 East Marshall St., PO  
980662  
Sanger Hall, Rm 4010  
Richmond, VA 23298-0662  
USA  
tddilts@vcu.edu

Lisa Dixon  
U Florida College of Medicine  
1600 SW Archer Road  
Box 100275  
Gainesville, FL 32610-0275  
USA  
dixolr@pathology.ufl.edu

Barbara S. Ducatman  
Robert C Byrd HSC/West Virginia  
University  
One Medical Center Drive  
P O Box 9203  
Morgantown, WV 26506-9203  
USA  
bducatman@hsc.wvu.edu

Joel Duckworth  
Olympus America Inc.  
3500 Corporate Pkwy  
Center Valley, PA 18034-  
USA  
joel.duckworth@olympus.com

Tricia Duff  
Olympus America Inc.  
3500 Corporate Pkwy  
Center Valley, PA 18034-  
USA  
tricia.duff@olympus.com

Peter Dysert  
Baylor U Medical Center, Dallas  
3500 Gaston Ave  
Dallas, TX 75246  
USA  
peterd@bhcs.com

John N. Eble  
Indiana Univ School of Medicine  
Ms128  
USA  
jlindsle@iupui.edu

Leonel Edwards  
Danbury Hosp  
24 Hospital Ave  
Danbury, CT 6810  
USA  
Leonel.edwards@danhosp.org

Derrick Elder  
IMPAC Medical Systems, Inc.  
100 Mathilda Place  
5th Floor  
Sunnyvale, CA 94086  
USA  
delder@impac.com

Ronald J. Elin  
University of Louisville, School of  
Medicine  
512 S Hancock Street  
#203  
Louisville, KY 40202  
USA  
rjelin01@gwise.louisville.edu

Kyle Eskue  
U Texas Medical Branch  
285 Brandy Ridge Lane  
Dickinson, TX 77539  
USA  
kleskue@yahoo.com

Michael John Esposito  
Long Island Jewish Medical Center  
270-05 76 Ave, Room B67  
New Hyde Park, NY 11040  
USA  
mesposit@lij.edu

## Association of Pathology Chairs 2009 Annual Meeting

*Pathology Practice and Management: Sharing Successes, Avoiding Failures and Preparing for the Future*

July 15-17, 2009

Fairmont Olympic Hotel, Seattle, Washington

D. Greer Falls  
Medical College of Georgia  
1120 15th Street  
BA 1572  
Augusta, GA 30912-3600  
USA  
gfalls@mcg.edu

Joseph C. Fantone  
Univ of Michigan Med Ctr  
1301 Catherine St  
3808 Med Sci II, SPC 5611  
Ann Arbor, MI 48109-5611  
USA  
jfantone@umich.edu

Tunde Farkas  
Pennsylvania Hospital  
Eighth and Spruce Sts  
Philadelphia, PA 19107-6192  
USA  
farkast@uphs.upenn.edu

Nelson Fausto  
Univ of Washington  
Box 357470  
Seattle, WA 98195-7470  
USA  
nfausto@u.washington.edu

Kristin R. Fiebelkorn  
U Texas Health Science Center  
7703 Floyd Curl Drive, Mc 7750  
San Antonio, TX 78229-3750  
USA  
fiebelkorn@uthscsa.edu

Loretta Fields  
American Society for Clinical  
Pathology  
33 W Monroe Street, Suite 1600  
Chicago, IL 60603  
USA  
loretta.fields@ascp.com

Constance Filling  
College of American Pathologists  
325 Waukegan Road  
Northfield, IL 60093  
USA  
cfillin@cap.org

James S. Fine  
Univ of Washington Sch of Med  
1959 NE Pacific St, Box 357110  
Seattle, WA 98195-7110  
USA  
jsfine@u.washington.edu

Mark D. Fleming  
Children's Hospital Boston  
Enders 1116.1  
300 Longwood Ave  
Boston, MA 2115  
USA  
mark.fleming@childrens.harvard.edu

Robert Folberg  
Oakland University William  
Beaumont School of Medicine  
2200 N Squirrel Road  
Rm-478, O'Dowd Hall  
Rochester, MI 48309  
USA  
rfolberg@oakland.edu

Marjorie R. Fowler  
LSUHSC-Shreveport  
1501 Kings Hwy  
P O Box 33932  
Shreveport, LA 71130  
USA  
mfowle@lsuhsc.edu

Mark T. Friedman  
St. Luke's - Roosevelt Hospital  
281 Syosset Woodbury Road  
Woodbury, NY 11797  
USA  
markfriedman@chpnet.org

Leo Furcht  
U Minnesota Medical School  
420 Delaware St SE  
MMC 609 -760 Mayo  
Minneapolis, MN 55455-0392  
USA  
furch001@umn.edu

Billie Fyfe-Kirschner  
UMDNJ-Robert Wood Johnson  
Medical School  
One Robert Wood Johnson Place  
MEB 212  
New Brunswick, NJ 8903  
USA  
fyfekibs@umdnj.edu

Stephen J. Galli  
Stanford University Medical Center  
300 Pasteur Drive, L-235  
Stanford, CA 94305-5324  
USA  
sgalli@stanford.edu

Regina Gandour-Edwards  
U California, Davis Health System  
4400 V St, Path Building  
Sacramento, CA 95817  
USA  
regina.gandour-  
edwards@ucdmc.ucdavis.edu

Francis Gannon  
Baylor College of Medicine  
One Baylor Plaza, Room 286  
Houston, TX 77030  
USA  
fgannon@bcm.edu

Jacqueline Garcia  
U Texas Health Science Center -  
Houston  
6431 Fannin MSB 2.136  
Houston, TX 77030  
USA  
jacqueline.guillorygarcia@uth.tmc.edu

A. Julian Garvin  
Wake Forest University School of  
Medicine  
USA  
ajgarvin@wfubmc.edu

Ken Gatter  
Oregon Health Sciences Univ  
670 7th Street  
Lake Oswego, OR 97034  
USA  
gatterk@ohsu.edu

Roger W. Geiss  
Univ of Illinois College of Medicine  
One Illini Drive, PO Box 1649  
Peoria, IL 61656-1649  
USA  
rgeiss@uic.edu

M.G.F. Gilliland  
Brody Sch Med/East Carolina Univ  
Brody Med Science Bldg 7S18  
600 Moyer Blvd  
Greenville, NC 27858  
USA  
mggillil@pcmh.com

Curtis Goldblatt  
Conemaugh Memorial Medical  
Center  
1086 Franklin St  
Rm 205-B  
Johnstown, PA 15905  
USA  
cgoldbl@conemaugh.org

## Association of Pathology Chairs 2009 Annual Meeting

*Pathology Practice and Management: Sharing Successes, Avoiding Failures and Preparing for the Future*

July 15-17, 2009

Fairmont Olympic Hotel, Seattle, Washington

Evelyn Gopez  
University of Utah  
Huntsman Cancer Hospital  
1950 Circle Of Hope Drive Suite  
3850  
Salt Lake City, UT 84112  
USA  
evelyn.gopez@hsc.utah.edu

Fred Gorstein  
Thomas Jefferson University  
Medical Center  
1020 Locust Street  
279 JAH  
Philadelphia, PA 19107  
USA  
fred.gorstein@jefferson.edu

Tana Grady-Weliky  
Oregon Health Science Univ  
3181 SW Sam Jackson Pk Road  
School of Medicine L-102  
Portland, OR 97239  
USA  
gradywel@ohsu.edu

Suzanne Graham  
Texas Tech University School of  
Medicine  
USA  
suzanne.graham@ttuhsc.edu

Sandra Grear  
College of American Pathologists  
325 Waukegan Road  
Northfield, IL 60094  
USA  
sgrear@cap.org

Marilea Grider  
Emory University Hospital  
1364 Clifton Road NE  
H184  
Atlanta, GA 30322  
USA  
marileagrider@emoryhealthcare.org

Dana Marie Grzybicki  
U Colorado School of Medicine  
Bldg A01  
12631 East 17th Ave, Rm L15-  
2203  
Aurora, CO 80045  
USA  
grzybicki@ucdenver.edu

Kymberly Gyure  
Robert C Byrd HSC/WVA  
University  
P.o. Box 9203  
Morgantown, WV 26506  
USA  
kgyure@hsc.wvu.edu

Cheryl Hanau  
Drexel Univ Coll of Med  
395 Arden Road  
Conshohocken, PA 19428  
USA  
chanau@drexelmed.edu

Tony H. Hang  
U California, San Francisco Sch  
Medicine  
2nd Floor  
USA  
hangt@labmed2.ucsf.edu

Clifford V. Harding  
Case Western Reserve Univ  
USA  
cvh3@cwru.edu

Brent T. Harris  
Dartmouth-Hitchcock Medical  
Center  
One Medical Center Dr  
HB 7600  
Lebanon, NH 3756  
USA  
bharris@dartmouth.edu

Michael Hart  
Univ of Wisconsin Ctr Hlth Sci  
1300 University Ave  
Rm 6152 MSC  
Madison, WI 53706-1532  
USA  
mnhart@wisc.edu

Reid R. Heffner  
Univ at Buffalo School of Medicine  
3435 Main Street  
206 Farber Hall  
Buffalo, NY 14214-3000  
USA  
rheffner@buffalo.edu

Richard Hegele  
University of Toronto  
CANADA  
richard.hegele@utoronto.ca

James Hempel  
Madigan Army Medical Center  
ATTN: MCHJ-H  
Tacoma, WA 98431  
USA  
James.Hempel@us.army.mil

Jay Hess  
Univ of Michigan Medical School  
5240 Med Sci 1, SPC 5602  
1301 Catherine  
Ann Arbor, MI 48109-5602  
USA  
jayhess@umich.edu

Susan Hill  
Indiana University School of  
Medicine  
635 Barnhill Drive  
MS12B  
Indianapolis, IN 46202-5120  
USA  
suehill@iupui.edu

Robert D. Hoffman  
Vanderbilt Univ School of Medicine  
1161 21st Avenue South  
CC3321-A MCN  
Nashville, TN 37232-2561  
USA  
robert.d.hoffman@vanderbilt.edu

Peter Howanitz  
SUNY Downstate Medical Center  
450 Clarkson Ave  
Box 25  
Brooklyn, NY 11203-2098  
USA  
peter.howanitz@downstate.edu

Lydia Howell  
U California, Davis Medical Center  
4400 V St, PATH Building  
Sacramento, CA 95817  
USA  
lydia.howell@ucdmc.ucdavis.edu

Phyllis Huettner  
Washington University Med Ctr  
660 S Euclid Avenue  
Campus Box 8118  
St Louis, MO 63110  
USA  
huettner@wustl.edu

## Association of Pathology Chairs 2009 Annual Meeting

*Pathology Practice and Management: Sharing Successes, Avoiding Failures and Preparing for the Future*

July 15-17, 2009

Fairmont Olympic Hotel, Seattle, Washington

Dan Hunt  
Associating American Medical  
Colleges  
Washington, DC 20037-1127  
USA  
dhunt@aamc.org

Robert L. Hunter  
U Texas Health Science Center -  
Houston  
6431 Fannin Street, MSB 2136  
Houston, TX 77030  
USA  
Robert.L.Hunter@uth.tmc.edu

William J. Hunter  
Creighton University Med Center  
601 N 30th St  
Omaha, NE 68131  
USA  
hunter@creighton.edu

John Hutter  
SUNY at Stony Brook  
School of Basic Health Sciences  
BST9 - 140  
Stony Brook, NY 11794-7025  
USA  
john.hutter@stonybrook.edu

Kedar Vishwas Inamdar  
Henry Ford Hospital  
2799 West Grand Blvd  
K-6  
Detroit, MI 48202-2689  
USA  
kinamda1@hfhs.org

J. Charles Jennette  
U North Carolina-Chapel Hill Sch  
Medicine  
Dept of Pathology & Laboratory  
Medicine  
Manning Dr, CB#7525  
Chapel Hill, NC 27599-7525  
jcj@med.unc.edu

Peter E. Jensen  
Univ of Utah School of Medicine  
50 North Medical Drive  
Salt Lake City, UT 84132  
USA  
allison.boyer@path.utah.edu

Rebecca Johnson  
Berkshire Health Systems  
727 North Street  
Pittsfield, MA 1201  
USA  
rjohnson@bhs1.org

Lija Joseph  
Boston University  
670 Albany St  
Boston, MA 2118  
USA  
lija.joseph@bmc.org

David R. Kaplan  
Case Western Reserve Univ  
BRB, Rm 926, 2109 Adelbert RD  
Cleveland, OH 44106-4943  
USA  
drk5@pop.cwru.edu

Donald Karcher  
George Washington Univ Med Ctr  
2300 Eye St Nw  
Ross Hall, Room 502  
Washington, DC 20037  
USA  
dkarcher@mfa.gwu.edu

Douglas Karsch  
Univ of Miami Miller Sch of Med  
1611 Nw 12th Avenue  
JMHoltz Bldg Rom 2044, R-5  
Miami, FL 33136  
USA  
dkarsch@med.miami.edu

Peter Katsufra  
National Board of Medical  
Examiners  
3750 Market Street  
Philadelphia, PA 19104  
USA  
pkatsufra@nbme.org

Karen Kaul  
NorthShore University  
HealthSystem  
Department Of Pathology  
2650 Ridge Ave  
Evanston, IL 60201-1783  
USA  
k-kaul@northwestern.edu

Scott Kirkley  
U Rochester Medical Center  
601 Elmwood Ave  
P.O. Box 608  
Rochester, NY 14642  
USA  
scott\_kirkley@urmc.rochester.edu

Kenneth M. Klein  
UMDNJ-New Jersey Medical  
School  
185 S Orange Ave  
Newark, NJ 07103-2757  
USA  
kklein@umdnj.edu

Angelina Knott  
Univ of Mississippi Medical Center  
2500 North State Street  
Jackson, MS 39216  
USA  
aknott@pathology.umsmed.edu

Peter J. Kragel  
ECU Brody School of Medicine  
600 Moye Blvd  
Room 7S10  
Greenville, NC 27834  
USA  
kragelp@ecu.edu

Kevin Krane  
Tulane University  
School of Medicine  
1430 Tulane Avenue, SL-6  
Suite 1730  
New Orleans, LA 70112  
kkrane@tulane.edu

Jennifer Kuklinski  
Lippincott William & Wilkins -  
Wolters Kluwer Health  
530 Walnut Street  
Philadelphia, PA 19106  
jennifer.kuklinski@wolterskluwer.com

Rachel Kulow  
U Wisconsin  
1300 University Ave 6152 MSC  
Madison, WI 53706-1532  
USA  
ragrimm@wisc.edu

Vinay Kumar  
Univ of Chicago School of  
Medicine  
5841 S Maryland Ave  
SBRI S-329  
Chicago, IL 60637-1463  
USA  
vkumar@bsd.uchicago.edu

Ed Lachica  
Olympus America Inc.  
3500 Corporate Pkwy  
Center Valley, PA 18034-  
USA  
ed.lachica@olympus.com



## Association of Pathology Chairs 2009 Annual Meeting

*Pathology Practice and Management: Sharing Successes, Avoiding Failures and Preparing for the Future*

July 15-17, 2009

Fairmont Olympic Hotel, Seattle, Washington

Janice M. Lage  
Medical University of South  
Carolina  
Msc 908  
USA  
lagejm@musc.edu

Bernard P. Lane  
Stony Brook Univ  
6 Intervale Road  
East Setauket, NY 11733  
USA  
bernard.lane@stonybrook.edu

Jonathan F. Lara  
Saint Barnabas Medical Center  
94 Old Short Hills Rd  
Livingston, NJ 7039  
USA  
jlara@sbhcs.com

Patricia Latham  
The George Washington Univ Sch  
of Med  
2300 I St NW, Ross Hall 511  
Washington, DC 20037  
USA  
platham@mfe.gwu.edu

Subodh Lele  
Univ of Nebraska Medical Center  
Omaha, NE 68198-3135  
USA  
slele@unmc.edu

David Lewin  
Medical Univ of South Carolina  
165 Ashley Avenue  
Suite-309  
Charleston, SC 29425-0908  
USA  
lewin@musc.edu

Fritz Lin  
U California, Irvine College of  
Medicine  
101 The City Drive  
Orange, CA 92697-4800  
USA  
flin@uci.edu

Amy Lin  
U Illinois at Chicago  
840 S Wood St, Csn 130  
Chicago, IL 60612-7335  
USA  
alin@uic.edu

Julie Lindsley  
Indiana University School of  
Medicine  
635 Barnhill Dr, Ms 128  
Indianapolis, IN 46202-5120  
USA  
jlindsle@iupui.edu

Melissa Lord-Toof  
American Pathology Foundation  
1540 S. Coast Highway  
Suite 203  
Laguna Beach, CA 92651  
USA  
melissa@apfconnect.org

Clifford Lowell  
U California, San Francisco Sch  
Medicine  
513 Parnassus Ave  
Box 0451  
San Francisco, CA 94143-0451  
USA  
clifford.lowell@ucsf.edu

Steve Mackie  
Elsevier/Saunders/Mosby  
2710 59th Street, SW  
Everett, WA 98203  
USA  
s.mackie@elsevier.com

Ginny Mackie  
Elsevier/Saunders/Mosby  
2710 59th Street, SW  
Everett, WA 98203  
USA  
mackiesg@verizon.net

Margret Magid  
Mount Sinai School of Medicine  
Box 1194  
Gustave L. Levy Place  
New York, NY 10029  
USA  
margret.magid@mountsinai.org

Charles Marboe  
Columbia Univ Coll Phys & Surg  
630 W 168th St  
PH 15W, Rm-1574  
New York, NY 10032  
USA  
ccm1@columbia.edu

Peg Martino  
UMDNJ-Robert Wood Johnson  
Med Sch  
One Robert Wood Johnson Place  
MEB 212  
New Brunswick, NJ 8903  
USA  
martin16@umdnj.edu

Frank Mayo  
McKesson/Per-Se Technologies  
1145 Sanctuary Parkway  
Alpharetta, GA 30004  
USA  
frank.mayo@mckesson.com

Marcia Huston McCall  
Wake Forest University School of  
Medicine  
USA  
mmccall@wfubmc.edu

Susan McCarthy  
U California, Irvine College of  
Medicine  
D440 Med Sci I, Zot 4800  
Irvine, CA 92697-4800  
USA  
smmccart@uci.edu

Jay McDonald  
U Alabama at Birmingham Medical  
Center  
619 S 19th Street, Wp P210  
Birmingham, AL 35249-7331  
USA  
mcdonald@uab.edu

Barbara J. McKenna  
Univ of Michigan  
1500 E Med Ctr Dr - Box 0054  
Ann Arbor, MI 48109-0054  
USA  
barbmcke@med.umich.edu

Howard L McLeod  
UNC School of Pharmacy  
CB #7361, Genomic Medicine  
Building, Room 1094  
Chapel Hill, NC 27599-7360  
USA  
hmcLeod@unc.edu

Diana Medina  
Univ of Texas Health Sci Center  
7703 Floyd Curl Drive  
MC 7750  
San Antonio, TX 78229-3900  
USA  
medinad@uthscsa.edu

## Association of Pathology Chairs 2009 Annual Meeting

*Pathology Practice and Management: Sharing Successes, Avoiding Failures and Preparing for the Future*

July 15-17, 2009

Fairmont Olympic Hotel, Seattle, Washington

Wayne Mercer  
Chi Solutions, Inc.  
903 Airport Drive  
Ann Arbor, MI 48108  
USA  
wmerc@chisolutionsinc.com  
George K. Michalopoulos  
U of Pittsburgh Medical School  
S-410 Biomedical Science Tower  
USA  
michalopoulosgk@upmc.edu

Martha Miers  
Vanderbilt University Sch of Med  
C-3322 Medical Center North  
1161 21st Ave So  
Nashville, TN 37232-2561  
USA  
martha.miers@vanderbilt.edu

Margaret W. Miles  
Oregon Health Sciences University  
3181 SW Sam Jackson Pk Rd  
Mail Code L-113  
Portland, OR 97239  
USA  
miles@ohsu.edu

Ira Miller  
Rush-Presbyterian-St Luke's  
Medical Ctr  
1653 West Congress Parkway  
Chicago, IL 60612-3864  
USA  
Ira\_Miller@rush.edu

Jon S. Morrow  
Yale University School of Medicine  
310 Cedar St  
New Haven, CT 06510-3218  
USA  
jon.morrow@yale.edu

Lawrence Moser  
Medical University of South  
Carolina  
USA  
moserl@muscc.edu

Robert E Mrak  
Univ of Toledo Hlth Sci Campus  
3000 Arlington Avenue  
Toledo, OH 43614  
USA  
Robert.Mrak@UToledo.edu

William A. Muller  
Northwestern University Feinberg  
School of Medicine  
303 E Chicago Ave, Ward 3-140  
Chicago, IL 60611-3008  
USA  
wamuller@northwestern.edu

Jerald E. Mullersman  
East Tenn State Univ/James H  
Quillen Coll Med  
Po Box 70568  
Johnson City, TN 37614  
USA  
mullersm@etsu.edu

Mehrdad Nadji  
Univ of Miami Sch of Med  
1611 NW 12th Avenue  
Holtz-2147  
Miami, FL 33136  
USA  
mnadji@med.miami.edu

Wesley Y. Naritoku  
U of Southern CA/LAC+USC/Keck  
Sch of Med  
USA  
naritoku@usc.edu

Cynthia C. Nast  
Cedars-Sinai Medical Center  
8700 Beverly Blvd  
Los Angeles, CA 90048  
USA  
nast@cshs.org

Beverly Nelson  
Northwestern University Med Sch  
251 E. Huron Street, Rm 7-209  
Feinberg Pavilion  
Chicago, IL 60611  
USA  
bpnelson@northwestern.edu

Ann Neumann  
College of American Pathologists  
325 Waukegan Road  
Northfield, IL 60093  
USA  
aneumann@cap.org

Santo V. Nicosia  
Univ of South Florida Col of Med  
12901 Bruce B Downs Blvd  
MDC Box 11  
Tampa, FL 33612-4799  
USA  
snicosia@health.usf.edu

Nancy Nye  
Univ North Carolina at Chapel Hill  
CB#7525, Brinkhous-Bullitt Bldg  
Chapel Hill, NC 27599-7525  
USA  
Nancy.Nye@pathology.unc.edu

Juan Pablo Olano  
U Texas Medical Branch  
301 University Blvd, Route 0428  
Galveston, TX 77555-0428  
USA  
jolano@utmb.edu

Darrell O'Sullivan  
Univ of California, Davis Med Ctr  
4400 V Street  
Sacramento, CA 95817  
USA  
darrell.osullivan@ucdmc.ucdavis.edu

Tristram Parslow  
Emory University Hospital  
1364 Clifton Road NE  
Rm H-182  
Atlanta, GA 30322  
USA  
tparslo@emory.edu

Ian Paul  
U New Mexico School of Medicine  
1 University of New Mexico  
MSCII 6030  
Albuquerque, NM 87131-5301  
USA  
idpaul@salud.unm.edu

Stephen C. Peiper  
Thomas Jefferson University  
Medical Center  
1020 Locust Street, Ste 279 Jah  
Philadelphia, PA 19107  
USA  
stephen.peiper@jefferson.edu

Yuri Persidsky  
Temple Univ School of Medicine  
3401 North Broad Street  
Philadelphia, PA 19140  
USA  
yuri.persids@tuhs.temple.edu

Barbara Peterson  
Univ of Washington Sch of Med  
Box 357470  
USA  
barb@pathology.washington.edu

## Association of Pathology Chairs 2009 Annual Meeting

*Pathology Practice and Management: Sharing Successes, Avoiding Failures and Preparing for the Future*

July 15-17, 2009

Fairmont Olympic Hotel, Seattle, Washington

Carol Petito  
Univ of Miami Sch of Med/Jackson  
Memorial Hospital  
4510 Santa Maria Street  
Coral Gables, FL 33146  
USA  
cpetito@med.miami.edu

Carrie Phillips  
Indiana University School of  
Medicine  
#4090  
USA  
cphilli3@iupui.edu

Barry Portugal  
Health Care Development  
Services, Inc.  
2916 Idlewood Lane  
Highland Park, IL 60035  
USA  
consult@hcdsinc.com

Miriam Post  
U Colorado School of Medicine  
12605 E 16th Ave  
Mail Stop F-768  
Aurora, CO 80045  
USA  
miriam.post@ucdenver.edu

Suzanne Z. Powell  
Methodist Hospital System  
6565 Fannin, MS 205  
Houston, TX 77030  
USA  
spowell@tmhs.org

Susan Erin Presnell  
Medical Univ of South Carolina  
165 Ashley Ave Ste 309 POB  
250908  
Charleston, SC 29425-0908  
USA  
mconnse@musc.edu

Michael B. Prystowsky  
Montefiore Med Ctr/Albert Einstein  
Col of Med  
1300 Morris Park Ave - Belfer 713  
Bronx, NY 10461  
USA  
prystows@aecom.yu.edu

Harry E. Pukay-Martin  
The Ohio State Univ  
129 Hamilton Hall  
USA  
Harry.Pukay-Martin@osumc.edu

Michele D. Raible  
Oakland University William  
Beaumont School of Medicine  
472 O'Dowd Hall  
Rochester, MI 48309  
USA  
raible@oakland.edu

Petrie M. Rainey  
Univ of Washington Sch of Med  
1959 NE Pacific St - Box 357110  
NW 120  
Seattle, WA 98195-7110  
USA  
pmrainey@u.washington.edu

Preetha Ramalingam  
Medical College of Georgia  
1120 15th Street, RM BF108  
Augusta, GA 30912  
USA  
pramalingam@mail.mcg.edu

Lou Ramonetta  
Aurora Interactive Ltd.  
1425 Rene-Levesque Wst #906  
Montreal, QC H36 1T7  
Canada  
lramonetta@auroramsc.com

Erik Ranheim  
U Wisconsin  
600 Highland Avenue KY/850 CSC  
Verona, WI 53792  
USA  
earanheim@wisc.edu

Robert L. Reddick  
U Texas Health Science Center  
7703 Floyd Curl Dr - MC 7750  
San Antonio, TX 78229-3900  
USA  
reddick@uthscsa.edu

Daniel Remick  
Boston University School of  
Medicine  
715 Albany Street L804  
Boston, MA 2118  
USA  
remickd@bu.edu

Nancy Risenhoover  
Univ of New Mexico Sch of Med  
1 University Of New Mexico  
USA  
nrisenhoover@salud.unm.edu

Steve Rodgers  
Mopec  
21750 Collidge Highway  
Oak Park, MI 48237  
USA

Joseph Rondinelli  
UMDNJ-New Jersey Med School  
185 S Orange Avenue  
MSBC-573  
Newark, NJ 7103  
USA  
rondinjd@umdnj.edu

Susan Roseff  
Virginia Commonwealth Univ/MCV  
1101 E Marshall Street  
Rm 6230 - Trans Med  
Richmond, VA 23298-0662  
USA  
sroseff@mcvh-vcu.edu

Nancy Rosenthal  
U Iowa College of Medicine  
200 Hawkins Drive  
Iowa City, IA 52242-1087  
USA  
nancy-rosenthal@uiowa.edu

Kevin A. Roth  
U Alabama at Birmingham Medical  
Center  
1720 7th Avenue South  
Birmingham, AL 35294-0017  
USA  
karoth@uab.edu

Brian Rudolph  
U Pittsburgh  
200 Locust Street  
S419 BST  
Pittsburgh, PA 15261  
USA  
rudolphb@upmc.edu

Daniel H. Ryan  
U Rochester Medical Center  
601 Elmwood Avenue  
Box 626  
Rochester, NY 14642  
USA  
dan\_ryan@urmc.rochester.edu

Charlotte Ryan  
Univ of Rochester Medical Center  
601 Elmwood Avenue  
Box 626  
Rochester, NY 14642  
USA  
Charlotte\_Ryan@urmc.rochester.edu

## Association of Pathology Chairs 2009 Annual Meeting

*Pathology Practice and Management: Sharing Successes, Avoiding Failures and Preparing for the Future*

July 15-17, 2009

Fairmont Olympic Hotel, Seattle, Washington

Andrea Saenim  
Univ of Illinois, Chicago  
820 S Wood Street  
Room-130 CSN  
Chicago, IL 60612  
USA  
sandra@uic.edu

Henry Sanchez  
U California, San Francisco Sch  
Medicine  
513 Parnassus Ave  
San Francisco, CA 94143  
USA  
henrycs@itsa.ucsf.edu

Fred Salzinger  
Creighton University  
2500 California Plaza  
Omaha NE 68178  
USA  
fhs48885@creighton.edu

Patricia Sanders-Hall  
Univ of KS Hospital  
3901 Rainbow Blvd  
Suite-1215, Mail Stop  
Kansas City, KS 66160  
USA  
psanders-hall@kumc.edu

Samuel A. Santoro  
Vanderbilt University School of  
Medicine  
1161 21st Avenue South  
Nashville, TN 37232-2561  
USA  
samuel.santoro@vanderbilt.edu

Richard Scanlan  
Oregon Health Sciences University  
USA  
scanlanr@ohsu.edu

Linda Schiffhauer  
U Rochester Medical Center  
601 Elmwood Avenue, Box 626  
Rochester, NY 14642  
USA  
linda\_schiffhauer@urmc.rochester.edu

Arthur S. Schneider  
Chicago Med Sch/Rosalind  
Franklin Univ Med & Sci  
3333 Green Bay Rd  
North Chicago, IL 60064-3095  
USA  
arthur.schneider@rosalindfranklin.edu

Roger Searls  
Duke University Medical Center  
Erwin Road  
Box 3712 DUMC  
Durham, NC 27710  
USA  
roger.searls@duke.edu

Margo Segall  
McKesson Corporation  
1145 Sanctuary Parkway  
Suite 200  
Alpharetta, GA 30076  
USA  
margo.segall@mckesson.com

Mary Ann Sens  
Univ of North Dakota/Sch of Med  
and Hlth Sci  
501 N Columbia Road, Rm-3133  
Stop 9037  
Grand Forks, ND 58203  
USA  
msens@medicine.nodak.edu

Arwa Shana'ah  
Ohio State University  
7613 Gylwyn Court  
Dublin, OH 43017  
USA  
arwa.shanaah@osumc.edu

David Shimizu  
John A Burns School of Medicine  
651 Ilalo St #401A  
Honolulu, HI 96813  
USA  
dshimizu@queens.org

Kenneth R. Shroyer  
Stony Brook Medical Center  
University Hospital Health  
Sciences Center  
BST-9, Room-140  
Stony Brook, NY 11794-8691  
USA  
kenneth.shroyer@stonybrook.edu

Anwer Siddiqi  
University of Mississippi Medical  
Center  
2500 North State Street  
Jackson, MS 39216-4505  
USA  
asiddiqi@pathology.umsmed.edu

Fred G. Silva  
US-Canadian Acad of Path  
3643 Walton Way Extension  
Augusta, GA 30909  
USA  
fsilva@uscap.org

John Sinard  
Yale University School of Medicine  
310 Cedar St Po Box 208023  
Po Box 208023  
New Haven, CT 06520-8023  
USA  
john.sinard@yale.edu

Raymond L. Stoupa  
Creighton University  
2500 California Plaza  
Omaha NE 68178  
USA  
rls88204@creighton.edu

Richard Sobonya  
Arizona Health Sciences Center  
1501 N Campbell  
Tucson, AZ 85724-5108  
USA  
rsobonya@email.arizona.edu

Kelley Squazzo  
Lippincott William & Wilkins -  
Wolters Kluwer Health  
530 Walnut Street  
Philadelphia, PA 19106  
kelley.squazzo@wolterskluwer.com

Constance Stanton  
Wake Forest University School of  
Medicine  
Medical Center Blvd  
Winston-Salem, NC 27157-1072  
USA  
stanton@wfubmc.edu

John C. H. Steele  
Medical College of Georgia  
1120 15th St, Bi-2008a  
Augusta, GA 30912  
USA  
jsteele@mail.mcg.edu

Jacob J. Steinberg  
Montefiore Med Ctr/Albert Einstein  
Col of Med  
USA  
jsteinbe@montefiore.org

## Association of Pathology Chairs 2009 Annual Meeting

*Pathology Practice and Management: Sharing Successes, Avoiding Failures and Preparing for the Future*

July 15-17, 2009

Fairmont Olympic Hotel, Seattle, Washington

Judy Sterry  
University of Rochester  
Box 626  
Rochester, NY 14642  
USA  
judy\_sterry@urmc.rochester.edu

Christopher P. Stowell  
Mass Gen Hosp, 55 Fruit St  
Boston, MA 2114  
USA  
cstowell@partners.org

Kelley W. Suskie  
U Arkansas for Medical Sciences  
4301 West Markham Slot 517  
Little Rock, AR 72205-7101  
USA  
SuskieKelleyW@uams.edu

Saul Suster  
The Medical College of Wisconsin  
Dynacare Lab Building, Rm-226  
9200 W. Wisconsin Avenue  
Milwaukee, WI 53226  
USA  
ssuster@mcw.edu

Michael L. Talbert  
University of Oklahoma Health  
Sciences Center  
940 Stanton L. Young Blvd.  
BMSB-451  
Oklahoma City, OK 73104  
USA  
michael-talbert@ouhsc.edu

Clive R. Taylor  
U of Southern CA/LAC+USC/Keck  
Sch of Med  
2011 Zonal Avenue  
Hmr 204  
Los Angeles, CA 90033-1054  
USA  
ctaylor@keck.usc.edu

Enrique Terrazas  
Univ of California, San Francisco  
Sch Medicine  
185 Berry Street  
Suite-290  
San Francisco, CA 94107  
USA  
enrique.terrazas@ucsf.edu

Karl Theil  
Cleveland Clinic Foundation  
9500 Euclid Avenue  
L30  
Cleveland, OH 44195  
USA  
theilk@ccf.org

Rebecca Thomas  
Temple University  
USA  
thomasrm@tuhs.temple.edu

Patricia A. Thomas  
Kansas University Medical Center  
3901 Rainbow Blvd  
MS 3045  
Kansas City, KS 66160-7410  
USA  
pthomas@kumc.edu

Nancie Thompson  
American Society for Clinical  
Pathology  
33 West Monroe  
Suite-1600  
Chicago, IL 60603  
USA  
Nancie.Thompson@ascp.org

Ann D. Thor  
U Colorado School of Medicine  
Mail Stop B216  
12631 East 17th Ave, Rm L15-  
2215  
Aurora, CO 80045  
USA  
ann.thor@ucdenver.edu

Gregory A. Threatte  
SUNY Upstate Medical University  
750 East Adams Street  
Syracuse, NY 13210-2306  
USA  
threatte@upstate.edu

Charles Timmons  
Univ of Texas Southwestern Med  
Sch  
5323 Harry Hines Blvd  
Dallas, TX 75390-9072  
USA  
pathresprogdir@utsouthwestern.edu

John Tomaszewski  
U Pennsylvania  
3400 Spruce Street  
HUP  
Philadelphia, PA 19104  
USA  
tomaszew@mail.med.upenn.edu

Douglas Toothman  
Robert C Byrd HSC/West Virginia  
University  
One Medical Center Drive  
P O Box 9203  
Morgantown, WV 26506-9203  
USA  
dtoothman@hsc.wvu.edu

Megan Troxell  
Oregon Health Sciences Univ  
3181 SW Sam Jackson Pk Rd, L-  
471  
Portland, OR 97239  
USA  
troxellm@ohsu.edu

Jacqueline Trupiano  
William Beaumont Hospital  
3601 W. Thirteen Mile Road  
Royal Oak, MI 48073  
USA  
jtrupiano@beaumont.edu

Lily Tuan  
Northwestern Univ Med Sch  
303 E Chicago Ave  
Chicago, IL 60611-3072  
USA  
ltuan@northwestern.edu

J. Allan Tucker  
Univ of South Alabama Med Ctr  
2451 Fillingim Street  
Mobile, AL 36617  
USA  
atucker@usouthal.edu

Mark L. Tykocinski  
Thomas Jefferson University  
Medical Center  
1025 Walnut Street  
Suite 100  
Philadelphia, PA 19107  
USA  
mark.tykocinski@jefferson.edu

## Association of Pathology Chairs 2009 Annual Meeting

*Pathology Practice and Management: Sharing Successes, Avoiding Failures and Preparing for the Future*

July 15-17, 2009

Fairmont Olympic Hotel, Seattle, Washington

Richard S. Vander Heide  
Louisiana State University Health  
Science Center  
(effective 9/1/09)  
1901 Perdido Street  
New Orleans, LA 70112  
USA

Carole A. Vogler  
St Louis Univ Sch of Med  
USA  
voglerca@slu.edu

Kai Wang  
Univ of California, San Francisco  
185 Berry Street  
Suite-100  
San Francisco, CA 94132  
USA  
kaiwang@ucsf.edu

Bob Weathers  
McKesson/Per-Se Technologies  
1145 Sanctuary Pkway  
Suite 200  
Alpharetta, GA 30004  
USA  
bob.weathers@per-se.com

Douglas A. Weeks  
Oregon Health Sciences University  
3181 Sam Jackson Park Road  
L113  
Portland, OR 97239  
USA  
weeksd@ohsu.edu

Ronald Weiss  
Univ Utah Med Sch, C/O Arup  
Labs  
500 Chipeta Way  
Salt Lake City, UT 84108  
USA  
weissrl@aruplab.com

Dennis Weissman  
Dennis Weissman &  
Associates, LLC  
201 Park Ridge Court  
Front Royal, VA 22630  
USA  
dennis@weissmanassociates.com

David S. Weissmann  
UMDNJ-Robt Wood Johnson Med  
School  
New Brunswick, NJ 8901  
USA  
weissmdj@umdnj.edu

Keith A. Wharton  
U Texas Southwestern Medical  
School  
5323 Harry Hines Blvd  
Nb6.440  
Dallas, TX 75390-9072  
USA  
keith.wharton@utsouthwestern.edu

Donald Wheeler  
U South Florida/College of Med  
12901 Bruce B Downs Blvd  
MDC 11  
Tampa, FL 33612-4799  
USA  
dwheeler@health.usf.edu

Marjel Whitmore  
Creighton University Medical  
Center  
601 North 30th Street  
Suite 2469  
Omaha, NE 68131  
USA  
marjelwhitmore@creighton.edu

David S. Wilkinson  
Virginia Commonwealth Univ/MCV  
1101 E Marshall Street  
Box 980662  
Richmond, VA 23298-0662  
USA  
dwilkinson@mcvh-vcu.edu

Thomas Williams  
Univ of New Mexico  
1 University of New Mexico  
MSC 08 4640  
Albuquerque, NM 87131-5301  
USA  
twilliams@salud.unm.edu

Harold Williams  
Robert C Byrd HSC/WVA Univ  
1011 Royal Oaks Drive  
Morgantown, WV 26508  
USA  
hjwilliams@hsc.wvu.edu

Marsha Williams  
U of Utah School of Medicine  
50 North Medical Drive  
Suite 1100  
Salt Lake City, UT 84132  
USA  
marsha.williams@path.utah.edu

Gayle L. Winters  
Brigham & Women's Hospital  
Dept. Of Pathology, Brigham &  
Women's Hospital  
75 Francis Street  
Boston, MA 2115  
USA  
gwinters@partners.org

Eva Wojcik  
Loyola Univ Medical Center  
2160 First Avenue  
Bldg 103, Rm-0165  
Maywood, IL 60153  
USA  
ewojcik@lumc.edu

John Woosley  
Univ of North Carolina Sch of Med  
Manning Dr, CB #7525  
Chapel Hill, NC 27514  
USA  
jwoosley@unch.unc.edu

Gordon H. Yu  
University of Pennsylvania  
3400 Spruce Street  
6 Founders Pavilion, Rm F.6.036  
Philadelphia, PA 19104-4283  
USA  
gordonyu@mail.med.upenn.edu

Dani S. Zander  
Pennsylvania State College of  
Medicine  
MC H083, PO Box 850  
500 University Drive  
Hershey, PA 17033-0850  
USA  
dzander@hmc.psu.edu

Joel Ziebarth  
LCM Pathologists P.C.  
1305 W. 18th Street  
P O Box 5134  
Sioux Falls, SD 57117  
USA  
jziebarth@lcmpath.com



***SAVE THE DATE!***

**Association of  
Pathology Chairs**

**APC 2010**

**Annual Meeting**

**Seattle, Washington**

**July 14-16, 2010**



# Insightful Research in Pathology Starts with Annual Reviews

## Annual Review of Pathology: Mechanisms of Disease

VOLUME 4, FEBRUARY 2009 | ONLINE & IN PRINT | [HTTP://PATHOL.ANNUALREVIEWS.ORG](http://pathol.annualreviews.org)  
ISSN: 1553-4006 | ISBN: 978-0-8243-4304-0 | Regular Individual Price (Worldwide): \$55

Co-Editors: **Abul K. Abbas**, *University of California, San Francisco*  
**Stephen J. Galli**, *Stanford University School of Medicine*  
**Peter M. Howley**, *Harvard Medical School*

**Annual Review of Pathology: Mechanisms of Disease**<sup>®</sup>, in publication since 2006, covers significant advances in our understanding of the initiation and progression of important human diseases. Emphasis is placed on current and evolving concepts of disease pathogenesis, molecular genetic and morphologic alterations associated with diseases, and clinical significance.

Each volume of the journal includes discussion of diverse disorders, which may fall into the broad categories of cell injury/inflammation/repair, neoplasia, infectious and immunological diseases, cardiac and vascular diseases, and neurologic diseases.

This journal is intended for biomedical scientists, physicians and pathologists interested in disease mechanisms, and students of medicine and related disciplines.

Institutional pricing and site license options available. Contact Annual Reviews for details.

## ACCESS DYNAMIC CONTENT ONLINE NOW

Continually updated online content includes Reviews In Advance (RIA); fully supplemented and searchable full-text articles and PDFs; as well as links to all participating CrossRef publications, Medline<sup>®</sup>, and ISI's Web of Science<sup>®</sup>.

## Association of Pathology Chairs Members: Request Your FREE Copy Today!

Annual Reviews is pleased to offer a complimentary copy of this journal to every member of the Association of Pathology Chairs. Contact Annual Reviews for details.

Access this and all Annual Reviews journals immediately via your institution's subscription at [www.annualreviews.org](http://www.annualreviews.org)

## ANNUAL REVIEWS

*A Nonprofit Scientific Publisher*

tel: 800.523.8635  
(Toll Free US/CAN)

tel: 650.493.4400  
(Worldwide)

fax: 650.424.0910

email: [service@annualreviews.org](mailto:service@annualreviews.org)

order online: [www.annualreviews.org](http://www.annualreviews.org)

