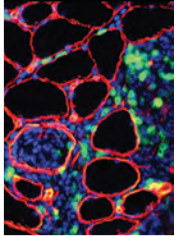
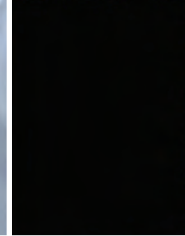
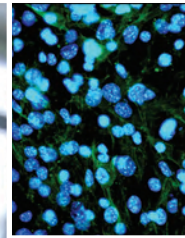


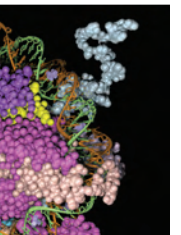
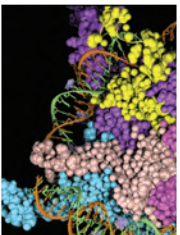
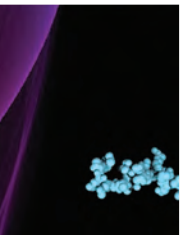
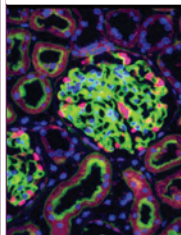
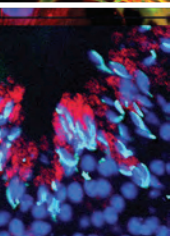
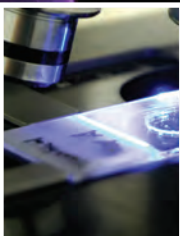
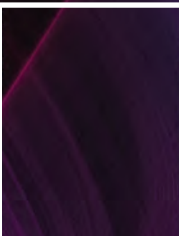
# Meeting Program

**Save the Date!**  
APC 2011 Annual Meeting  
APC/PRODS/UMEDS/PDAS  
July 13-15, 2011  
Monterey, CA

[www.apcprods.org](http://www.apcprods.org)



**Association of  
Pathology Chairs  
2010 Annual Meeting  
July 14-16, 2010  
Seattle, Washington (USA)**





American Society for  
Clinical Pathology  
Press

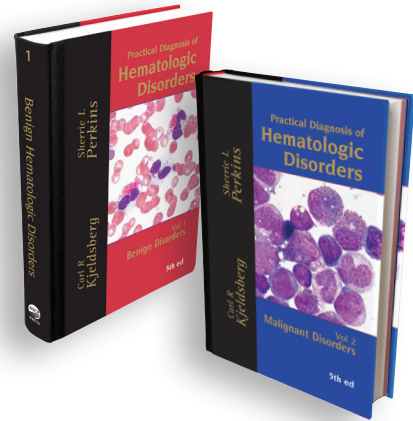
www.ascp.org/books

## Resources from ASCP Press

### Practical Diagnosis of Hematologic Disorders

5th Edition Edited by: Carl Kjeldsberg, MD  
and Sherrie L. Perkins, MD, PhD

Substantially expanded to reflect two major trends in diagnosis: lab-ready  
molecular genetic modalities and the new **2008 WHO Classification for  
malignancies**.



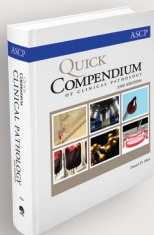
2 volumes	928 pages	723 images	289 tables
70 Figures	2009	ISBN: 9780891895718	

## ASCP series Quick Compendium

Includes online access  
for immediate consult.

### Clinical Pathology

2nd Edition  
Daniel D. Mais, MD



Hardbound 484 pages 165 tables  
58 figures 2008  
ISBN: 9780891895671

### Surgical Pathology

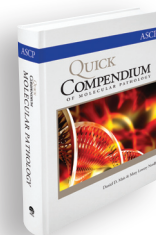
Stephen Ramsburgh, MD



Hardbound 768 pages 2 tables  
7 figures 2008  
ISBN: 9780891895664

### Molecular Pathology

Daniel D. Mais, MD  
Mary Nordberg, PhD



Hardbound 320 pages 73 tables  
7 figures 2008  
ISBN: 9780891899990

### Clinical Pathology

George Leonard, MD, PhD, MAJ,  
MC, USA  
Daniel D. Mais, MD

### Molecular Pathology

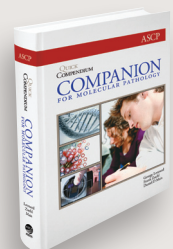
George Leonard, MD, PhD, MAJ, MC, USA  
Frank Zuehl, MD, LT, MC, USN  
Daniel D. Mais, MD

## Quick Compendium Companions

The ideal study tools - hundreds of  
questions and answers keyed to their  
compendium volumes.



Hardbound 343 pages 2009  
ISBN: 9780891895794



Hardbound 208 pages  
2009 ISBN: 9780891895909

# Association of Pathology Chairs 2010 Annual Meeting

July 14-16, 2010

Fairmont Olympic Hotel, Seattle, Washington

## Contents

APC Council Members.....	3
CME Information.....	5
Hotel Maps.....	7
Exhibit Floorplan.....	8
Exhibit Schedule/List of Exhibitors.....	9
APC Meeting Program.....	11
PRODS Meeting Program.....	19
PDAS Meeting Program.....	26
UMEDS Meeting Program.....	32
List of Participants.....	39

## APC Code of Conduct

**Code of Conduct:** Events and listservs managed or held by the Association of Pathology Chairs (APC) exist for the professional development of members and for the advancement of academic pathology. Members and guests of events and listservs are expected to conduct themselves with professionalism, cordiality and respect. At a minimum, APC expects members and guests to abide by local and national laws, when attending or interacting at APC events and on APC listservs. Furthermore, APC leadership has developed a 'no tolerance' policy toward misconduct by members or guests that results in physical or emotional harm to fellow members, guests or employees of APC or event facilities. By registering for an event or participating on a listserv, participants are expected to uphold the spirit of this code of conduct, which is intended to support the professional benefits of APC affiliation. Complaints may be submitted confidentially to APC Council, by contacting the Executive Officer by phone at 301-634-7130 or by email to [apc@asip.org](mailto:apc@asip.org). If a complaint is brought to the attention of the Executive Officer, the Conduct Review Committee of the APC Council shall be convened to determine, through a conscientious review of evidence, whether an individual has violated the code of conduct. If a violation of the code of conduct is judged to have occurred by a unanimous vote, the Committee may either issue a warning to correct the behavior (which will subsequently be monitored by the Committee) or the Committee may recommend that the individual will be excluded from participation in APC events and/or listservs for a period of no less than two years from the date of judgment. The individual may appeal the exclusion decision of the Committee to the entire APC Council by contacting the Executive Officer; the appeal decision of the APC Council will be determined by a majority vote. If excluded from participation, at the end of two years, the individual may request in writing permission to participate in APC events and/or listservs, at which time the Conduct Review Committee may grant such permission. The individual may appeal the permission decision of the Committee to the entire APC Council by contacting the Executive Officer; the permission decision of the APC Council will be determined by a majority vote.

## Association of Pathology Chairs 2010 Annual Meeting

July 14-16, 2010

Fairmont Olympic Hotel, Seattle, Washington



Association of Pathology Chairs

## Association of Pathology Chairs "Promoting Excellence in Academic Pathology"

### APC Mission Statement

The Association of Pathology Chairs serves as a voice of academic pathology. The mission of the APC is to provide leadership and to advocate for the dynamic discipline of pathology. The APC provides education, training, information resources and networking opportunities for chairs, residency program directors, graduate student program directors and department administrators.

**Association of Pathology Chairs 2010 Annual Meeting**

July 14-16, 2010

Fairmont Olympic Hotel, Seattle, Washington

**CME Organizing Committee/Council 2010 Annual Meeting:**

**PRESIDENT**

J. Charles Jennette, MD  
University of North Carolina - Chapel Hill

**PRESIDENT-ELECT**

Peter Jensen, MD  
University of Utah School of Medicine

**PAST PRESIDENT**

James M. Crawford, MD, PhD  
North Shore - Long Island Jewish Medical Center  
Hofstra University Medical School

**SECRETARY-TREASURER**

Tristram Parslow, MD, PhD  
Emory University Hospital

**COUNCILOR-AT-LARGE**

Donald Karcher, MD  
George Washington University Medical Center

**CHAIR, Undergraduate Medical Education Committee**

Michael Cohen, MD  
University of Iowa College of Medicine

**CHAIR, Graduate Medical Education Committee**

J. Allan Tucker, MD  
University of South Alabama Medical Center

**CHAIR, Research Committee**

Ann Thor, MD  
University of Colorado at Denver HSC

**CHAIR, Practice & Management Committee**

Robert L. Hunter, MD, PhD  
University of Texas - Houston Medical School



**SAVE THE  
DATE!**

**Association of  
Pathology Chairs  
APC 2011**

**Annual Meeting**

**Monterey, California  
July 13-15, 2011**

***www.apcprods.org***



## Association of Pathology Chairs 2010 Annual Meeting

July 14-16, 2010

Fairmont Olympic Hotel, Seattle, Washington

### Continuing Medical Education (CME) Information



American Society for  
Clinical Pathology



Association of  
Pathology Chairs

**CME Accreditation Statement:** This activity ("APC 2010 Annual Meeting") has been planned and implemented in accordance with the Essential Areas and policies of the Accreditation Council for Continuing Medical Education (ACCME) through the joint sponsorship of the American Society for Clinical Pathology (ASCP) and the Association of Pathology Chairs (APC). ASCP is accredited by the ACCME to provide continuing medical education for physicians.

The ASCP designates this educational activity ("APC 2010 Annual Meeting") for a maximum of 26 *AMA PRA Category 1 Credit(s)*<sup>™</sup>. Physicians should only claim credit commensurate with the extent of their participation in the activity.

CME applications are available online ([www.apcprods.org](http://www.apcprods.org)) beginning **July 14, 2010**. Should you have questions, please contact the APC Office ([301-634-7880](tel:301-634-7880); [email apc@asip.org](mailto:apc@asip.org)).

**Meeting Objective/Target Audience:** The APC 2010 Annual Meeting will focus on issues and challenges related to the ability of academic and hospital departments of pathology and laboratory medicine to provide clinical service, teaching, and training and to provide a forum for the exchange of research by scientists and investigators. Academic departments of pathology and laboratory medicine are facing significant pressures which adversely impact their ability to carry out their missions of teaching, clinical service, and research. This meeting focuses on undergraduate (medical school), graduate (residency and fellowship), and lifelong pathology education, as well as the development of educational programs and curricula for training of medical students, residents, fellows, and senior pathologists, and on mechanisms to provide quality clinical service to patients. At the completion of this activity, participants should be able to: 1) apply new methods and approaches being used by departments of pathology and laboratory medicine to accomplish their clinical service and teaching and training missions; 2) describe the Accreditation Council for Graduate Medical Education (ACGME) regulations governing graduate medical education and the accreditation of training programs; and 3) utilize information and data that lead to improvements in the delivery of pathology clinical and teaching services with the goal of enabling constructive interactions between pathologists and other health care practitioners.

The target audience is professionals (MD, DO, PhD) and others who serve as the academic, medical, scientific, and administrative leaders of departments of pathology and laboratory medicine in the United States and Canada.

**Disclosure of Financial Relationships and Resolution of Conflicts of Interest:** In order to ensure balance, independence, objectivity and scientific rigor in all its educational activities, and in accordance with ACCME Standards, the ASCP requires all individuals in a position to influence and/or control the content of ASCP CME activities to disclose to the ASCP and subsequently to learners whether they do or do not have any relevant financial relationships with proprietary entities producing health care goods or services that are discussed in CME activities. Faculty are asked to use generic names in any discussion of therapeutic options, to base patient care recommendations on scientific evidence and to base information regarding commercial products/services on scientific methods generally accepted by the medical community. All ASCP CME activities are evaluated by participants for the presence of any commercial bias and this input is used for subsequent CME planning decisions. The primary purpose of this activity is educational and the comments, opinions and/or recommendations expressed by the faculty or authors are their own and not those of ASCP.

## Association of Pathology Chairs 2010 Annual Meeting

July 14-16, 2010

Fairmont Olympic Hotel, Seattle, Washington

None of the organizers of this educational activity disclosed a relevant financial relationship. The following presenters have indicated relationships that have been reviewed and conflicts of interest resolved. If a presenter is not listed, then he/she had no relationship to disclose.

### Invited Speaker Disclosures

Margaret Gulley

Consultant fees from McKesson and Scientia Advisors  
Clinical advisory fee from Generation Health  
Spousal consultant fee from 3CM

Richard Levenson

Consultant fees from Omnyx and Spectros Corp.

Richard Satava

Consultant fee from Karl Torz, Gbmh  
Owns stock in InTouch Health, Inc.

Guillermo Tearney

Receives licensing royalties and has research grant from Terumo Corp.  
Royalties from MIT

John Tomaszewski

Receives sponsored research support from Bioimagene

### PLEASE NOTE:

Please refer to the APC Meeting Evaluation and CME Application Workbook for a consolidated list of sessions that are eligible for *AMA PRA Category 1 Credit(s)*<sup>TM</sup>. APC, PRODS and UMEDS sessions are eligible for *AMA PRA Category 1 Credit(s)*<sup>TM</sup> except where noted in the meeting program. PDAS sessions are not eligible for *AMA PRA Category 1 Credit(s)*<sup>TM</sup>. Visiting exhibits is not an approved continuing medical education activity. Most meals are not approved for continuing medical education credit; however, some special breakfasts and lunches that have educational content are eligible for Continuing Medical Education credit as noted in your APC Meeting Evaluation and CME Application Workbook. The meeting program states which events are not a Continuing Medical Education activity.

### ***ONLINE CME Application and Meeting Evaluation***

CME Applications will be submitted ONLINE. If you have not registered for CME by the end of the meeting, you will have an opportunity to register afterwards. Deadline for submission of CME Applications is September 15, 2010.

If you are not applying for CME, we still value your comments. Please submit your Meeting Evaluation ONLINE.

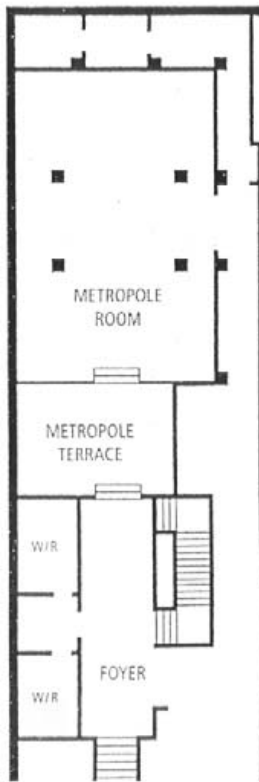
Please use the Meeting Evaluation and CME Application Workbook to keep track of your attendance and comments to facilitate your online submission. You will receive an email with a link to the ONLINE CME Application / Meeting Evaluation website after the meeting.



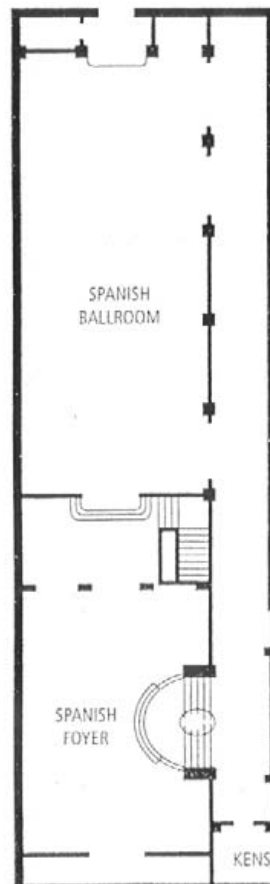
# Association of Pathology Chairs 2010 Annual Meeting

## Fairmont Olympic Hotel, Seattle, Washington

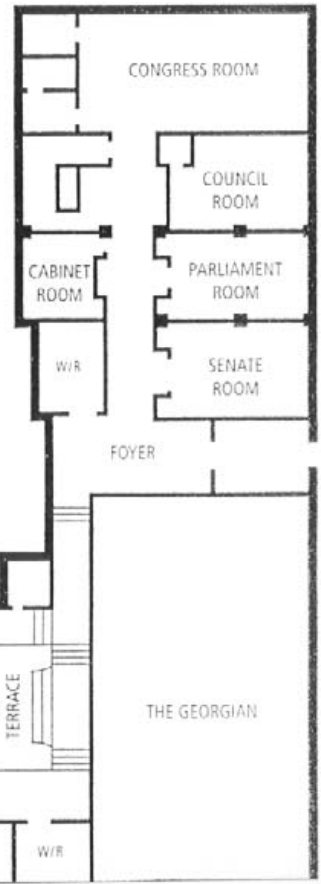
LOWER LEVEL



UPPER LEVEL

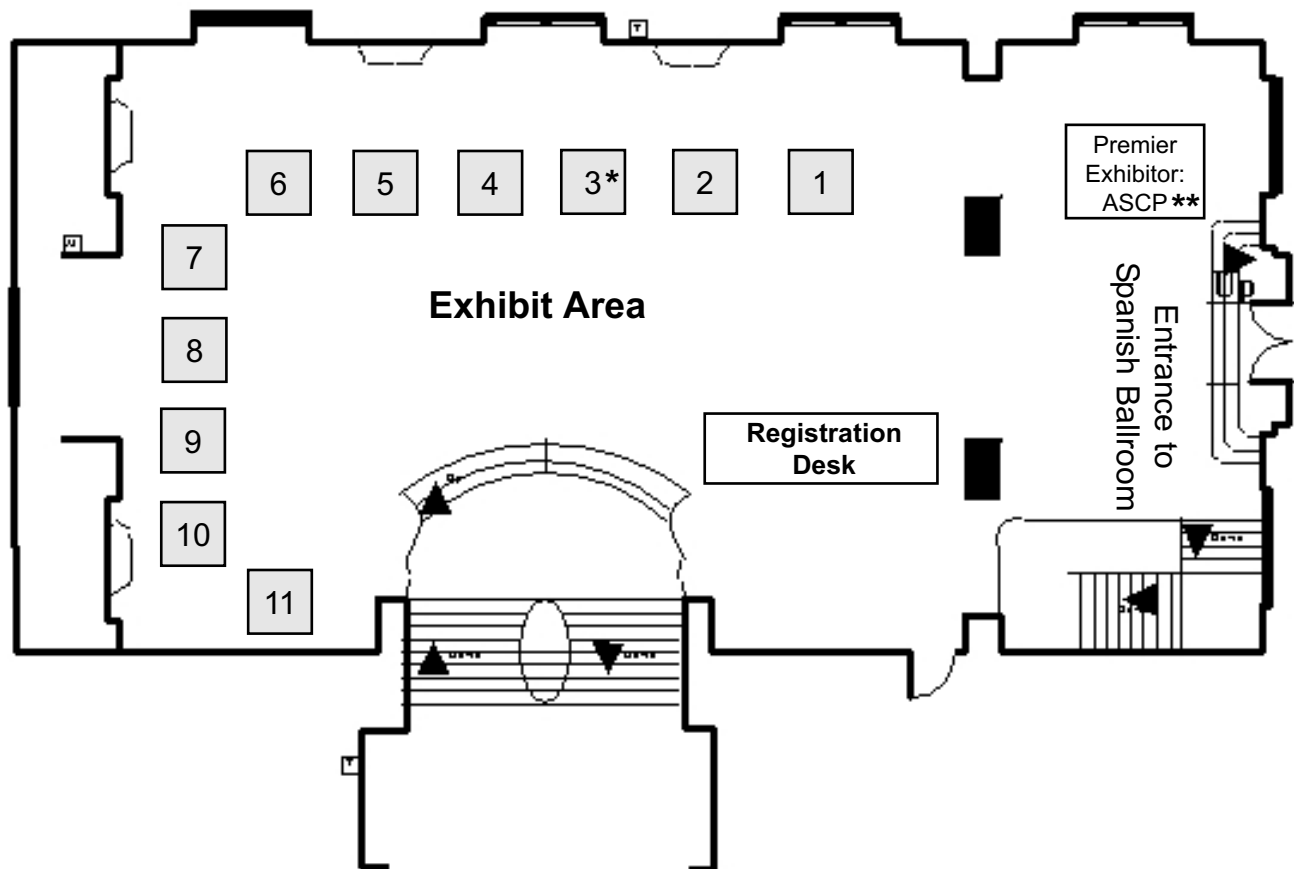


ASSEMBLY ROW



# Association of Pathology Chairs 2010 Annual Meeting Exhibit Hall

Fairmont Olympic Hotel, Seattle, Washington  
Spanish Ballroom Foyer



Premier Exhibitor: American Society for Clinical Pathology  
(*Premier Platinum Association Partner*) \*\*

1. McKesson
2. Lippincott Williams & Wilkins
3. Omnyx, LLC. (*Platinum Industry Partner*) \*
4. Cortex Medical Management Systems
5. Aperio
6. Aurora Interactive LTD
7. Bioimagene
8. Mopec, Inc.
9. Elsevier/Saunders/Mosby
10. Elekta Impac Software
11. College of American Pathologists

## Association of Pathology Chairs 2010 Annual Meeting

July 14-16, 2010

Fairmont Olympic Hotel, Seattle, Washington

### Exhibit Schedule (Spanish Ballroom Foyer)

Visiting the exhibits is not a Continuing Medical Education activity.

**Wednesday, July 14, 2010**

7:00 am – 5:00 pm

**Thursday, July 15, 2009**

7:00 am – 2:00 pm

**Friday, July 16, 2010**

7:00 am – 3:00 pm

#### **American Society for Clinical Pathology – Premier Platinum Association Partner**

The American Society for Clinical Pathology (ASCP) provides excellence in education, certification, and advocacy on behalf of patients, pathologists, and laboratory professionals. With 130,000 members, ASCP represents the entire laboratory team—board-certified pathologists, pathology residents, pathologists' assistants, certified laboratory professionals, and students. Membership in ASCP is free to pathology residents and to medical students.

[www.ascp.org](http://www.ascp.org)

#### **Aperio (Booth # 5)**

Aperio is the leading provider of digital pathology solutions in hospital and reference labs, academic medical centers, and biopharma institutions. Today, our affordable and complete product portfolio is proven to lower costs, increase efficiencies, and enhance workflow. Our comprehensive product line features our ScanScope® scanners, Imagescope™ and Spectrum™ image management (PACS) software, SecondSlide™ slide sharing, and SlideAnalysis™ image analysis tools.

[www.aperio.com](http://www.aperio.com)

#### **Aurora Interactive Ltd. (Booth # 6)**

The mission of Aurora Interactive Ltd. is to facilitate and contribute to better patient outcomes, helping physicians and members of the medical community to achieve their full potential by providing a web based software platform for simplicity and the ease of communications for learning, diagnostic and collaborative interaction.

[www.auroramsc.com](http://www.auroramsc.com)

#### **Biolmagene (Booth # 7)**

Biolmagene is a leading provider of innovative digital pathology solutions for the anatomic pathology laboratory. Our iScan™ family of automated digital slide scanners, coupled with our Virtuoso™ software and a rich menu of Companion Algorithms™, comprise our end-to-end digital pathology solutions. Biolmagene extends a full range of services to its customers, including comprehensive customer training programs, responsive technical support, customization and implementation services, and workflow optimization consulting. Biolmagene products are FDA cleared for specific clinical applications and are intended for research use for other applications.

[www.bioimagene.com](http://www.bioimagene.com)

#### **College of American Pathologists (Booth # 11)**

With more than 17,800 members, the CAP is the world's largest association composed exclusively of pathologists and is widely considered the leader in laboratory quality assurance and learning. The CAP's Residents Forum is now the largest gathering of pathology residents in the US and internationally. The College is leading a campaign to transform the specialty. More information is at [cap.org/transformation](http://cap.org/transformation).

[www.cap.org](http://www.cap.org)

#### **Cortex Medical Management Systems (Booth # 4)**

Cortex specializes in software for pathology and clinical laboratories. The Gold Standard – is an easily tailored anatomic pathology software system that encompasses Cytology and Anatomic Pathology. It allows quick, accurate data entry, creation of custom patient reports and many other features. Cortex RCM+ - is a flexible and comprehensive medical billing software system for use in Anatomic or Clinical Laboratories.

[www.cortexmed.com](http://www.cortexmed.com)

## Association of Pathology Chairs 2010 Annual Meeting

July 14-16, 2010

Fairmont Olympic Hotel, Seattle, Washington

### **Elekta Impac Software (Booth # 10)**

Elekta's Anatomic Pathology Information System, PowerPath®, streamlines workflow and daily operations for laboratories offering surgical pathology, cytology, dermatopathology and autopsy services. Versatile case-centric view ensures quick access to requisition data, case history, concurrent cases and billing information. Modules include Immunohistochemistry, Enhanced Outreach Reporting, Imaging, Internet Reporting, and Dermatopathology, it's one of the most advanced systems, easily integrated with other healthcare systems.

[www.elekta.com](http://www.elekta.com)

### **Elsevier/Saunders/Mosby (Booth # 9)**

The world's premier names in health care publishing - Saunders, Mosby, and Churchill Livingstone are all members of the Elsevier team of leading publishers dedicated to meeting the information needs of health science professionals. For over 125 years, the Elsevier name has represented a dedication to excellence in the exchange of information. Working with the world's most respected clinicians, educators, scientists and researchers, Elsevier has set a high standard for quality. Its publications are written and edited by international scholars with excellent clinical, technical and scientific credentials, and wide research and teaching experience in their fields.

[www.us.elsevierhealth.com](http://www.us.elsevierhealth.com)

### **Lippincott Williams & Wilkins (Booth # 2)**

Lippincott Williams & Wilkins, a Wolters Kluwer Health company is a leading international publisher of medical books, journals, and electronic media. Stop by and browse our extensive selection of pathology resources, including the widely acclaimed **Rubin's Pathology, Fifth Edition** textbook. *Plus learn about the all new Rubin's Pathology Flash Cards.*

[www.lww.com](http://www.lww.com)

### **McKesson (Booth # 1)**

McKesson's Revenue Management Solutions are a comprehensive suite of proven billing and practice management solutions specifically for the academic medical group environment. These applications are designed to meet the practice workflow and the business needs of the various departments of academic physician practices. Visit us at <http://www.mckesson.com/academicmedservices> or call 1-800-806-5730 for more information.

[www.mckesson.com](http://www.mckesson.com)

### **Mopec (Booth # 8)**

Mopec furnishes products, equipment and services for the pathology and histology related sciences. Related equipment includes, autopsy/necropsy tables, morgue refrigerators, cabinets, grossing work stations, cadaver handling and storage equipment. Mopec provides consulting, engineering and manufacturing and installation of mortuary, pathology and allied sciences products and equipment. Mopec is dedicated to one standard: Continued growth by providing our customers with the best quality products/services at competitive prices with unmatched service.

[www.mopec.com](http://www.mopec.com)

### **Omnyx, Inc. (Booth # 3) – Platinum Industry Partner**

The Omnyx offers the first and only Enterprise Digital Pathology solution to digitize the pathologist's routine workflow process along with case preparation and quality control in the lab. Omnyx addresses the scale, speed, reliability and workflow requirements for everyday clinical usage, enabling high-throughput pathology departments to go digital and benefit from improved efficiencies, quality and access to pathologists.

[www.omnyx.com](http://www.omnyx.com)

# Association of Pathology Chairs 2010 Annual Meeting

July 14-16, 2010

Fairmont Olympic Hotel, Seattle, Washington

APC

## Wednesday, July 14, 2010

- 7:00 am - 8:00 am**                      **Breakfast**  
*[This is not a Continuing Medical Education activity.]*  
Spanish Foyer
- 7:00 am - 7:30 am**                      **Workshop leader orientation (Wednesday)**  
*[This is not a Continuing Medical Education activity.]*  
Peter Jensen, MD, University of Utah School of Medicine  
Spanish Ballroom
- 8:00 am - 10:30 am**                      **APC/PRODS Cooperative Session**  
Spanish Ballroom
- 8:00 am - 8:05 am                      Welcome and opening remarks  
J. Charles Jennette, MD, University of North Carolina, Chapel Hill
- 8:05 am - 8:10 am                      Introduction  
J. Allan Tucker, MD, University of South Alabama Medical Center;  
W. Stephen Black-Schaffer, MD, Massachusetts General Hospital
- 8:10 am - 8:40 am                      Preparing residents for personalized medicine  
Debra Leonard, MD, PhD, Weill Cornell Medical College
- 8:40 am - 9:10 am                      A new look at laboratory management training in pathology residency education  
Barbara McKenna, MD, University of Michigan
- 9:10 am - 9:40 am                      The care and feeding of program directors  
Suzanne Powell, MD, Methodist Hospital System
- 9:40 am - 10:20 am                      Panel Discussion
- 10:20 am - 10:30 am                      Orientation and goals for workshops  
GME: J. Allan Tucker, MD, University of South Alabama Medical Center;  
Research: Ann Thor, MD, University of Colorado - Denver
- 10:30 am - 11:00 am**                      **Break, Visit the Exhibits**  
*[This is not a Continuing Medical Education activity.]*  
Spanish Foyer
- 11:00 am - 12:00 pm**                      **Workshops – Graduate Medical Education (GME) and Research**
- Workshops – Graduate Medical Education (GME)**
- GME Workshop Group 1A - A new look at laboratory management training in pathology residency education  
Leaders: Dani Zander, MD, Pennsylvania State College of Medicine; Susan Roseff, MD, Virginia Commonwealth University/Medical College of Virginia  
Spanish Ballroom
- GME Workshop Group 1B - A new look at laboratory management training in pathology residency education  
Leaders: Barbara Ducatman, MD, Robert C. Byrd/West Virginia University; John Sinard, MD, PhD, Yale University School of Medicine  
Council Room

**Association of Pathology Chairs 2010 Annual Meeting**

July 14-16, 2010

Fairmont Olympic Hotel, Seattle, Washington

GME Workshop Group 2A – Care and feeding of program directors  
*Leaders: John Tomaszewski, MD, University of Pennsylvania; Leslie Bruch, MD, University of Iowa College of Medicine*  
 Belvedere Room

GME Workshop Group 2B – Care and feeding of program directors  
*Leaders: A. Julian Garvin, MD, PhD, Wake Forest University School of Medicine; Robert Hoffman, MD, PhD, Vanderbilt University School of Medicine*  
 Windsor Room

GME Workshop Group 3A – Preparing residents for personalized medicine  
*Leaders: David Wilkinson, MD, PhD, Virginia Commonwealth University/Medical College of Virginia; Karen Kaul, MD, PhD, NorthShore University HealthSystem*  
 Parliament Room

GME Workshop Group 3B – Preparing residents for personalized medicine  
*Leaders: Thomas Williams, MD, University of New Mexico; Margaret Gulley, MD, University of North Carolina-Chapel Hill School Medicine*  
 Cabinet Room

**Workshops – Research**

Research Workshop 1 - Building research in non-research-intensive departments: How to foster collaborative research  
*Leaders: Mary Ann Sens, MD, PhD, University of North Dakota School of Medicine; J. Allan Tucker, MD, University of South Alabama Med Center*  
 Kensington Room

Research Workshop 2 - Coordinating experimental and clinical faculty  
*Leaders: Michael Clare-Salzler, MD, University of Florida – Gainesville; Stanley Cohen, MD, UMDNJ-New Jersey Medical School*  
 Rainer Room

**12:00 pm - 1:30 pm**

**APC/PRODS General Lunch**  
*[This is not a Continuing Medical Education activity.]*  
 Spanish Ballroom

**12:00 pm - 1:30 pm**

**New Chairs Luncheon with APC Council**  
*[This is not a Continuing Medical Education activity.]*  
 Kensington Room

**1:30 pm - 4:00 pm**

**APC/UMEDS Cooperative Session**  
 Spanish Ballroom

1:30 pm - 1:35 pm

Session introduction  
*Michael Cohen, MD, University of Iowa College of Medicine; Carolyn Cambor, MD, University of Pennsylvania*

1:35 pm - 1:55 pm

U.S. Medical Licensing Examination (USMLE) & National Board of Medical Examiners (NBME): Update & discussion  
*Peter Anderson, DVM, PhD, University Alabama at Birmingham Medical Center*

## Association of Pathology Chairs 2010 Annual Meeting

July 14-16, 2010

Fairmont Olympic Hotel, Seattle, Washington

A  
P  
C

- 1:55 pm - 2:45 pm HHMI/AAMC Scientific Foundations for Future Physicians:  
Report and discussion  
*Vinay Kumar, MBBS, MD, FRCPath, University of Chicago School of  
Medicine*
- 2:45 pm - 2:50 pm In-room mini-break
- 2:50 pm - 3:30 pm Education scholarship: Rewarding educational contributions of faculty  
*Thomas Viggiano, MD, MEd, Mayo Clinic*
- 3:30 pm - 4:00 pm Moderated discussion – Developing scholarly educators: The department  
chair's role  
*Thomas Viggiano, MD, MEd, Mayo Clinic; Carolyn Cambor, MD, University  
of Pennsylvania School of Medicine*
- 4:00 pm - 5:00 pm** **Break, Visit the Exhibits**  
*[This is not a Continuing Medical Education activity.]*  
Spanish Foyer
- 5:00 pm - 6:00 pm** **Opening Reception**  
**Sponsored by: American Society for Clinical Pathology**  
*[This is not a Continuing Medical Education activity.]*  
Spanish Foyer
- 6:00 pm - 9:00 pm** **Keynote Lecture and Banquet**  
Spanish Ballroom
- 6:00 pm – 6:15 pm Welcome and Moment of Silence  
*J. Charles Jennette, MD, University of North Carolina, Chapel Hill*
- 6:30 pm - 7:00 pm Keynote Lecture: Reforming Health Care Delivery  
*Brent C. James, MD, MStat, Chief Quality Officer and Executive Director,  
Institute for Health Care Delivery Research, Intermountain Healthcare*
- 7:15 pm - 7:45 pm Graduate Medical Education and Undergraduate Medical Education Awards  
*[This is not a Continuing Medical Education activity.]*  
*GME: Carol F. Farver, MD, The Cleveland Clinic Foundation*  
*UME: Michele D. Raible, MD, PharmD, Oakland University William  
Beaumont School of Medicine*  
*Presented by: J. Charles Jennette, MD, University of North Carolina, Chapel  
Hill*
- 7:45 pm - 8:00 pm Distinguished Service Award  
*[This is not a Continuing Medical Education activity.]*  
*David Hardwick, MD, FRCPC, The University of British Columbia Faculty of  
Medicine*  
*Presented by: Richard Hegele, MD, FRCPC, PhD, University of Toronto;  
Fred Silva, MD, U.S. & Canadian Academy of Pathology*

### Thursday, July 15, 2010

- 7:00 am - 8:00 am** **Breakfast**  
*[This is not a Continuing Medical Education activity.]*  
Spanish Foyer

**Association of Pathology Chairs 2010 Annual Meeting**

July 14-16, 2010

Fairmont Olympic Hotel, Seattle, Washington

- 7:00 am - 7:30 am**                      **Workshop leader orientation (Thursday)**  
*[This is not a Continuing Medical Education activity.]*  
*Peter Jensen, MD, University of Utah School of Medicine*  
 Kensington Room
- 8:00 am - 10:30 am**                      **APC/PDAS Cooperative Session**  
 Spanish Ballroom
- 8:00 am - 8:05 am                      Session introduction  
*Robert Hunter, MD, PhD, University of Texas Health Science Center – Houston; Nancy Risenhoover, University of New Mexico School of Medicine*
- 8:05 am - 8:45 am                      Healthcare reform: Challenges to academic pathology (getting ahead of the curve)  
*Louis D. Wright, Jr., MD, Pathology Service Associates, LLC*
- 8:45 am - 9:25 am                      Challenges in business practices for academic pathology  
*Jane Pine Wood, JD, McDonald Hopkins LLC*
- 9:25 am - 10:05 am                      Pathology market trends: Opportunities and threats for academic pathology  
*Jondavid Klipp, Publisher, Laboratory Economics*
- 10:05 am - 10:20 am                      MGMA survey update  
*Robert Hunter, MD, PhD, University of Texas Health Sciences Center – Houston; Nancy Risenhoover, University of New Mexico School of Medicine*
- 10:20 am - 10:30 am                      Workshop goals orientation  
*Michael Cohen, MD, University of Iowa College of Medicine; Robert Hunter, MD, PhD, University of Texas Health Science Center – Houston*
- 10:30 am - 11:00 am**                      **Break, Visit the Exhibits**  
*[This is not a Continuing Medical Education activity.]*  
 Spanish Foyer
- 11:00 am - 12:00 pm**                      **Workshops – Undergraduate Medical Education (UME) and Practice & Management (P&M)**
- Workshops – Undergraduate Medical Education**
- UME Workshop 1A – Competency-based curricula for medical student education  
*Leaders: Michael Cohen, MD, University of Iowa College of Medicine; Amy Lin, MD, University of Illinois at Chicago*  
 Council Room
- UME Workshop 1B – Competency-based curricula for medical student education  
*Leaders: Janice Lage, MD, Medical University of South Carolina; Charles Hitchcock, MD, PhD, The Ohio State University*  
 Kensington Room
- UME Workshop 2A/2B – Careers in education  
*Leaders: Richard Hegele, MD, FRCPC, PhD, University of Toronto; Harold (Jim) Williams, Robert C. Byrd Health Sciences Center/West Virginia University*  
 St. James Room



# Association of Pathology Chairs 2010 Annual Meeting

July 14-16, 2010

Fairmont Olympic Hotel, Seattle, Washington

APC

## Workshops – Practice & Management

P&M Workshop 1A – Challenges and opportunities in the evolving marketplace

*Leaders: Kenneth Rock, MD, University of Massachusetts Medical Center; Cynthia Bevis, JD, MBA, North Shore-Long Island Jewish Medical Center*  
Congress Room

P&M Workshop 1B – Challenges and opportunities in the evolving marketplace

*Leaders: Kandice Kottke-Marchant, MD, PhD, Cleveland Clinic Foundation; David Wooster, Yale University School of Medicine*  
Parliament Room

P&M Workshop 2A – Surveys: What data is needed and how do we get it?

*Leaders: Michael Prystowsky, MD, PhD, Montefiore Medical Center/ Albert Einstein Col of Med; Judy Elleson, University of Iowa College of Medicine*  
Belvedere Room

P&M Workshop 2B – Surveys: What data is needed and how do we get it?

*Leaders: Michael Talbert, MD, University of Oklahoma Health Sciences Center; Martha Miers, Vanderbilt University School of Medicine*  
Windsor Room

**12:00 pm - 1:30 pm**

### Lunch & APC Business Meeting

*[This is not a Continuing Medical Education activity.]*  
Spanish Ballroom

**1:30 pm - 3:30 pm**

### APC Committee Meetings

1:30 pm - 2:30 pm

Research Committee Meeting  
*Ann Thor, MD, University of Colorado Denver*  
St. James Room

1:30 pm - 2:30 pm

Undergraduate Medical Education Committee Meeting  
*Michael Cohen, MD, University of Iowa College of Medicine*  
Belvedere Room

2:30 pm - 3:30 pm

Graduate Medical Education Committee Meeting  
*J. Allan Tucker, MD, University of South Alabama Medical Center*  
Windsor Room

2:30 pm - 3:30 pm

Practice & Management Committee Meeting  
*Robert Hunter, MD, PhD, University of Texas Health Sciences Center – Houston*  
Kensington Room

**3:30 pm - 4:00 pm**

### Association & Industry Partner Breakshops

*[This is not a Continuing Medical Education activity.]*

### American Society for Clinical Pathology Breakshop

Parliament Room

### Omnyx, Inc Breakshop

Council Room

**Association of Pathology Chairs 2010 Annual Meeting**

July 14-16, 2010

Fairmont Olympic Hotel, Seattle, Washington

**4:00 pm - 5:30 pm**                      **Advocacy Committee Meeting**  
*Donald Karcher, MD, George Washington University Medical Center;*  
*Barbara Ducatman, MD, Robert C. Byrd Health Sciences Center/West*  
*Virginia University*  
 Spanish Ballroom

**5:00 pm - 6:30 pm**                      **Physician-Scientist Track Committee Meeting\***  
*Brian Smith, MD, Yale University School of Medicine*  
 St. James Room  
*\*Invitation Only*

**Friday, July 16, 2010**

**7:00 am - 8:00 am**                      **Breakfast**  
*[This is not a Continuing Medical Education activity.]*  
 Spanish Foyer

**8:00 am - 10:00 am**                      **Research Programming**  
 Spanish Ballroom

8:00 am - 8:05 am                      Session introduction – New technologies in diagnostic imaging  
*Ann Thor, MD, University of Colorado Denver*

8:05 am - 8:35 am                      Imaging technology for autopsy pathology and teaching of anatomy  
*Richard Satava, MD, FACS, University of Washington*

8:35 am - 9:05 am                      Imaging technologies for tumor identification and diagnosis  
*Guillermo J. Tearney, MD, PhD, Wellman Center for Photomedicine,*  
*Massachusetts General Hospital*

9:05 am - 9:35 am                      Imaging technologies for quantitation and diagnosis related to cytology and  
 cytogenetics  
*Richard Levenson, MD, Brighton Consulting Group*

9:35 am - 10:00 am                      Panel discussion - The continuing role of the human eye in 21st Century  
 pathology: Will we be replaced by imaging technologies?

**10:00 am - 10:30 am**                      **Break, Visit the Exhibits**  
*[This is not a Continuing Medical Education activity.]*  
 Spanish Foyer

**10:30 am - 12:00 pm**                      **Undergraduate Medical Education and Practice and Management**  
**Workshop Presentations**  
 Spanish Ballroom

10:30 am - 10:35 am                      UME Workshop 1A presentation

10:35 am - 10:40 am                      UME Workshop 1B presentation

10:40 am - 10:50 am                      Discussion

10:50 am - 10:55 am                      UME Workshop 2A presentation

10:55 am - 11:00 am                      UME Workshop 2B presentation

11:00 am - 11:10 am                      Discussion

## Association of Pathology Chairs 2010 Annual Meeting

July 14-16, 2010

Fairmont Olympic Hotel, Seattle, Washington

A  
P  
C

11:10 am - 11:15 am	P&M Workshop 1A presentation
11:15 am - 11:20 am	P&M Workshop 1B presentation
11:20 am - 11:30 am	Discussion
11:30 am - 11:35 am	P&M Workshop 2A presentation
11:35 am - 11:40 am	P&M Workshop 2B presentation
11:40 am - 11:50 am	Discussion
<b>12:00 pm - 1:00 pm</b>	<b>APC/PRODS Lunch – Pathology Fellowship Match Presentation &amp; Discussion</b> Spanish Ballroom  <i>Mona Signer, National Resident Matching Program</i>
<b>1:00 pm - 2:30 pm</b>	<b>Graduate Medical Education and Research Workshop Presentations</b> Spanish Ballroom
1:00 pm - 1:05 pm	GME Workshop 1A presentation
1:05 pm - 1:10 pm	GME Workshop 1B presentation
1:10 pm - 1:20 pm	Discussion
1:20 pm - 1:25 pm	GME Workshop 2A presentation
1:25 pm - 1:30 pm	GME Workshop 2B presentation
1:30 pm - 1:40 pm	Discussion
1:40 pm - 1:45 pm	GME Workshop 3A presentation
1:45 pm - 1:50 pm	GME Workshop 3B presentation
1:50 pm - 2:00 pm	Discussion
2:00 pm - 2:05 pm	Research Workshop 1 presentation
2:05 pm - 2:15 pm	Discussion
2:15 pm - 2:20 pm	Research Workshop 2 presentation
2:20 pm - 2:30 pm	Discussion
<b>2:30 pm - 3:00 pm</b>	<b>Break, Visit the Exhibits</b> <i>[This is not a Continuing Medical Education activity.]</i> Spanish Foyer
<b>3:00 pm - 5:00 pm</b>	<b>APC Advocacy: Synergies with cooperating societies – alignment for the future of pathology</b> Spanish Ballroom

**Association of Pathology Chairs 2010 Annual Meeting**

July 14-16, 2010

Fairmont Olympic Hotel, Seattle, Washington

3:00 pm - 3:05 pm	Opening comments <i>Donald Karcher, MD, George Washington University</i>
3:05 pm - 3:30 pm	Advocacy in the House of Medicine <i>Atul Grover, MD, PhD, Chief Advocacy Officer, Association of American Medical Colleges</i>
<b>3:30 pm - 5:00 pm</b>	<b>Alignment with American Board of Pathology Cooperating Societies</b> Spanish Ballroom
3:30 pm – 3:35 pm	College of American Pathologists <i>Stephen N. Bauer, MD, FCAP, Mercy San Juan Medical Center</i>
3:35 pm - 3:40 pm	American Medical Association Section Council on Pathology <i>Rebecca Johnson, MD, Berkshire Health Systems</i>
3:40 pm - 3:45 pm	United States and Canadian Academy of Pathology <i>Fred Silva, MD</i>
3:45 pm - 3:50 pm	American Society for Investigative Pathology <i>Stanley Cohen, MD, UMDNJ – New Jersey Medical School</i>
3:50 pm - 3:55 pm	Academy of Clinical Laboratory Physicians and Scientists <i>C. Bruce Alexander, MD, University of Alabama, Birmingham</i>
3:55 pm - 4:00 pm	The American Board of Pathology <i>Betsy Bennett, MD, PhD</i>
4:00 pm - 4:05 pm	American Society for Clinical Pathology <i>John Tomaszewski, MD, University of Pennsylvania</i>
4:05 pm - 4:10 pm	Association of Directors of Anatomic and Surgical Pathology <i>Jeffrey Myers, MD, University of Michigan</i>
4:10 pm - 5:00 pm	Discussion
<b>5:00 pm</b>	<b>Meeting Adjourns</b>

# Association of Pathology Chairs 2010 Annual Meeting

July 14-16, 2010

Fairmont Olympic Hotel, Seattle, Washington

## Wednesday, July 14, 2010

- 7:00 am - 8:00 am**                    **Breakfast**  
*[This is not a Continuing Medical Education activity.]*  
Spanish Foyer
- 7:00 am - 7:30 am**                    **Workshop leader orientation (Wednesday)**  
*[This is not a Continuing Medical Education activity.]*  
*Peter Jensen, MD, University of Utah School of Medicine*  
Spanish Ballroom
- 8:00 am - 10:30 am**                    **APC/PRODS Cooperative Session**  
Spanish Ballroom
- 8:00 am - 8:05 am                    Welcome and opening remarks  
*J. Charles Jennette, MD, University of North Carolina, Chapel Hill*
- 8:05 am - 8:10 am                    Introduction  
*J. Allan Tucker, MD, University of South Alabama Medical Center; W. Stephen Black-Schaffer, MD, Massachusetts General Hospital*
- 8:10 am - 8:40 am                    Preparing residents for personalized medicine  
*Debra Leonard, MD, PhD, Weill Cornell Medical College*
- 8:40 am - 9:10 am                    A new look at laboratory management training in pathology residency education  
*Barbara McKenna, MD, University of Michigan*
- 9:10 am - 9:40 am                    The care and feeding of program directors  
*Suzanne Powell, MD, Methodist Hospital System*
- 9:40 am - 10:20 am                    Panel Discussion
- 10:20 am - 10:30 am                    Orientation and goals for workshops  
*GME: J. Allan Tucker, MD, University of South Alabama Medical Center; Research: Ann Thor, MD, University of Colorado - Denver*
- 10:30 am - 11:00 am**                    **Break, Visit the Exhibits**  
*[This is not a Continuing Medical Education activity.]*  
Spanish Foyer
- 11:00 am - 12:00 pm**                    **Workshops – Graduate Medical Education (GME) and Research**
- Workshops – Graduate Medical Education (GME)**
- GME Workshop Group 1A - A new look at laboratory management training in pathology residency education  
*Leaders: Dani Zander, MD, Pennsylvania State College of Medicine; Susan Roseff, MD, Virginia Commonwealth University/Medical College of Virginia*  
Spanish Ballroom
- GME Workshop Group 1B - A new look at laboratory management training in pathology residency education  
*Leaders: Barbara Ducatman, MD, Robert C. Byrd/West Virginia University; John Sinard, MD, PhD, Yale University School of Medicine*  
Council Room

P  
R  
O  
D  
S

# Association of Pathology Chairs 2010 Annual Meeting

July 14-16, 2010

Fairmont Olympic Hotel, Seattle, Washington

GME Workshop Group 2A – Care and feeding of program directors  
*Leaders: John Tomaszewski, MD, University of Pennsylvania; Leslie Bruch, MD, University of Iowa College of Medicine*  
Belvedere Room

GME Workshop Group 2B – Care and feeding of program directors  
*Leaders: A. Julian Garvin, MD, PhD, Wake Forest University School of Medicine; Robert Hoffman, MD, PhD, Vanderbilt University School of Medicine*  
Windsor Room

GME Workshop Group 3A – Preparing residents for personalized medicine  
*Leaders: David Wilkinson, MD, PhD, Virginia Commonwealth University/Medical College of Virginia; Karen Kaul, MD, PhD, NorthShore University HealthSystem*  
Parliament Room

GME Workshop Group 3B – Preparing residents for personalized medicine  
*Leaders: Thomas Williams, MD, University of New Mexico; Margaret Gulley, MD, University of North Carolina-Chapel Hill School Medicine*  
Cabinet Room

**12:00 pm - 1:30 pm**

## **APC/PRODS General Lunch**

*[This is not a Continuing Medical Education activity.]*  
Spanish Ballroom

**1:30 pm - 4:00 pm**

## **PRODS Plenary Session I**

Metropole Room

1:30 pm - 1:40 pm

Welcome and introduction to meeting themes  
*W. Stephen Black-Schaffer, MD, Massachusetts General Hospital*

1:40 pm - 2:40 pm

General PRODS update and new PRODS orientation  
*W. Stephen Black-Schaffer, MD, Massachusetts General Hospital; Suzanne Powell, MD, Methodist Hospital System; Betsy Bennett, MD, PhD, American Board of Pathology*

2:40 pm - 3:30 pm

Milestones in residency training  
*Steven Nestler, PhD, Accreditation Council for Graduate Medical Education*

3:30 pm - 4:00 pm

General discussion

**4:00 pm - 5:00 pm**

## **PRODS & UMEDS Cooperative Session: Milestones at the interface from undergraduate medical education to graduate medical education**

*Steven Nestler, PhD, Accreditation Council for Graduate Medical Education*  
Metropole Room

**5:00 pm - 6:00 pm**

## **Opening Reception**

**Sponsored by: American Society for Clinical Pathology**  
*[This is not a Continuing Medical Education activity.]*  
Spanish Foyer

**P  
R  
O  
D  
S**

## Association of Pathology Chairs 2010 Annual Meeting

July 14-16, 2010

Fairmont Olympic Hotel, Seattle, Washington

PRODS

<b>6:00 pm - 9:00 pm</b>	<b>Keynote Lecture and Banquet</b> Spanish Ballroom
6:00 pm - 6:15 pm	Welcome and Moment of Silence <i>J. Charles Jennette, MD, University of North Carolina, Chapel Hill</i>
6:30 pm - 7:00 pm	Keynote Lecture: Reforming Health Care Delivery <i>Brent C. James, MD, MStat, Chief Quality Officer and Executive Director, Institute for Health Care Delivery Research, Intermountain Healthcare</i>
7:15 pm - 7:45 pm	Graduate Medical Education and Undergraduate Medical Education Awards <i>[This is not a Continuing Medical Education activity.]</i> GME: <i>Carol F. Farver, MD, The Cleveland Clinic Foundation</i> UME: <i>Michele D. Raible, MD, PharmD, Oakland University William Beaumont School of Medicine</i> <i>Presented by: J. Charles Jennette, MD, University of North Carolina, Chapel Hill</i>
7:45 pm - 8:00 pm	Distinguished Service Award <i>[This is not a Continuing Medical Education activity.]</i> <i>David Hardwick, MD, FRCPC, The University of British Columbia Faculty of Medicine</i> <i>Presented by: Richard Hegele, MD, FRCPC, PhD, University of Toronto; Fred Silva, MD, U.S. &amp; Canadian Academy of Pathology</i>

### Thursday, July 15, 2010

<b>7:00 am - 8:00 am</b>	<b>Breakfast</b> <i>[This is not a Continuing Medical Education activity.]</i> Spanish Foyer
<b>8:00 am - 12:00 pm</b>	<b>PRODS Plenary Session II</b> Metropole Room
8:00 am - 8:05 am	Greeting and introduction to session <i>W. Stephen Black-Schaffer, MD, Massachusetts General Hospital</i>
8:05 am - 8:25 am	Laboratory Management Taskforce report <i>Barbara McKenna, MD, University of Michigan; Susan Roseff, MD, Medical College of Virginia/Virginia Commonwealth University; Ronald Weiss, MD, ARUP Labs/University of Utah</i>
8:25 am - 8:45 am	Resident Training Gap Analysis Workgroup report <i>W. Stephen Black-Schaffer, MD, Massachusetts General Hospital; Suzanne Powell, MD, Methodist Hospital System; Michael Talbert, MD, University of Oklahoma Health Sciences Center; J. Allan Tucker, MD, University of South Alabama</i>
8:45 am - 9:05 am	Resident training in personalized medicine update <i>Richard Haspel, MD, PhD, Beth Israel Deaconess Medical Center</i>
9:05 am - 9:15 am	General discussion

## Association of Pathology Chairs 2010 Annual Meeting

July 14-16, 2010

Fairmont Olympic Hotel, Seattle, Washington

PRODS

9:15 am - 9:35 am	American Society for Clinical Pathology (ASCP) RISE report <i>Henry M. Rinder, MD, FASCP, Yale University School of Medicine</i>
9:35 am - 9:50 am	American Society for Clinical Pathology Resident Council report <i>Jessica A. Wieberg, MD, Chair-Elect, ASCP Resident Council, University of Missouri Healthcare</i>
9:50 am - 10:05 am	College of American Pathologists Residents Forum report <i>John Joseph Cangelosi, MD, Chair, CAP Residents Forum University of Texas MD Anderson Cancer Center</i>
10:05 am - 10:20 am	Association of American Medical Colleges – Organization of Resident Representatives report <i>David L. Stockman, MD, MS, ORR Pathology Representative Medical College of Wisconsin</i>
10:20 am - 10:30 am	General discussion
<b>10:30 am - 11:00 am</b>	<b>Break, Visit the Exhibits</b> <i>[This is not a Continuing Medical Education activity.]</i> Spanish Foyer
<b>11:00 am - 12:00 pm</b>	<b>PRODS Committee Meetings</b>  Ethics & Professionalism Committee Meeting Cabinet Room  Long-Range Planning & Membership Services Committee Meeting Metropole Terrace  Outcomes & Assessment Committee Meeting Metropole Room  Goals & Objectives Committee Meeting Congress Room
<b>12:00 pm - 1:30 pm</b>	<b>Lunch &amp; PRODS Business Meeting</b> <i>[This is not a Continuing Medical Education activity.]</i> Metropole Room
<b>1:30 pm - 2:30 pm</b>	<b>PRODS Plenary Session III</b> Metropole Room
1:30 pm - 2:00 pm	Program Information Forms – old, new and how to <i>Suzanne Powell, MD, Methodist Hospital System</i>
2:00 pm - 2:30 pm	American Board of Pathology: Maintenance of Certification, Maintenance of License, and online applications <i>Betsy Bennett, MD, PhD, American Board of Pathology</i>
2:30 pm - 3:30 pm	GME Committee Meeting (PRODS Council only) <i>J. Allan Tucker, MD, University of South Alabama Medical Center Windsor Room</i>



## Association of Pathology Chairs 2010 Annual Meeting

July 14-16, 2010

Fairmont Olympic Hotel, Seattle, Washington

3:30 pm - 4:00 pm

### Association & Industry Partner Breakshops

*[This is not a Continuing Medical Education activity.]*

#### ASCP Breakshop

Parliament Room

#### Omnyx, Inc Breakshop

Council Room

4:00 pm - 5:30 pm

### Advocacy Committee Meeting

*Donald Karcher, MD, George Washington University Medical Center;  
Barbara Ducatman, MD, Robert C. Byrd Health Sciences Center/West  
Virginia University  
Spanish Ballroom*

## Friday, July 16, 2010

7:00 am - 8:00 am

### Breakfast

*[This is not a Continuing Medical Education activity.]  
Spanish Foyer*

7:00 am - 7:30 am

### Workshop leader orientation (Friday)

*[This is not a Continuing Medical Education activity.]  
Suzanne Powell, MD, Methodist Hospital System  
Kensington Room*

8:00 am - 8:40 pm

### PRODS Plenary Session IV

Metropole Room

8:00 am - 8:10 am

Greeting and introduction to session  
*Suzanne Powell, MD, Methodist Hospital System*

8:10 am - 8:30 am

Association of Pathology Chairs fellowship match initiative report  
*James Crawford, MD, PhD, North Shore-Long Island Jewish Health System;  
W. Stephen Black-Schaffer, MD, Massachusetts General Hospital*

8:30 am - 8:40 am

General discussion

8:40 am - 10:00 am

### PRODS Workshops

Workshop 1: Role of autopsy in practice and education: is 50 a magic number?

*M.F.G. Gilliland, MD; Peter Kragel, MD; Babatunde Stokes MD, East Carolina University/Brody School of Medicine  
Cabinet Room*

Workshop 2: Managing the problem resident

*Mark T. Friedman, DO, St. Luke's-Roosevelt Hospital; Robert D. Hoffman, MD, PhD, Vanderbilt University School of Medicine  
Kensington Room*

Workshop 3: Providing progressive responsibility

*W. Stephen Black-Schaffer, MD, Massachusetts General Hospital; V.O. Speights, Jr., DO, Scott & White Hospital; Michael Talbert, MD, University of Oklahoma Health Sciences Center  
Metropole Room*

P  
R  
O  
D  
S

## Association of Pathology Chairs 2010 Annual Meeting

July 14-16, 2010

Fairmont Olympic Hotel, Seattle, Washington

Workshop 4: Resident recruitment

*Jerald E. Mullersman, MD, PhD, East Tennessee State University/James H. Quillen College of Medicine; Constance Stanton, MD, Wake Forest University School of Medicine; Jacob J. Steinberg, MD, Montefiore Medical Center/Albert Einstein College of Medicine*  
Parliament Room

Workshop 5: Physician Scientists – the research residency training track – why & how?

*Phyllis Huettner, MD, Washington University Medical Center; Charles Timmons, MD, PhD, University of Texas Southwestern Medical School*  
Council Room

**P  
R  
O  
D  
S**

**10:00 am - 10:30 am**

**Break, Visit the Exhibits**

*[This is not a Continuing Medical Education activity.]*

Spanish Foyer

**10:00 am - 10:30 am**

**Workshop Presentation Preparation (Workshop Leaders Only)**

Metropole Room

**10:30 am - 12:00 pm**

**PRODS Workshop Presentations & Discussion**

Metropole Room

10:30 am - 10:45 am

Workshop 1 presentation & discussion

10:45 am - 11:00 am

Workshop 2 presentation & discussion

11:00 am - 11:15 am

Workshop 3 presentation & discussion

11:15 am - 11:30 am

Workshop 4 presentation & discussion

11:30 am - 11:45 am

Workshop 5 presentation & discussion

11:45 am - 12:00 pm

Wrap-up and future plans

**12:00 pm - 1:00 pm**

**APC/PRODS Lunch – Pathology Fellowship Match  
Presentation & Discussion**

Spanish Ballroom

*Mona Signer, National Resident Matching Program*

**1:00 pm - 2:30 pm**

**Graduate Medical Education and Research Workshop Presentations**

Spanish Ballroom

1:00 pm - 1:05 pm

GME Workshop 1A presentation

1:05 pm - 1:10 pm

GME Workshop 1B presentation

1:10 pm - 1:20 pm

Discussion

1:20 pm - 1:25 pm

GME Workshop 2A presentation

1:25 pm - 1:30 pm

GME Workshop 2B presentation

1:30 pm - 1:40 pm

Discussion

1:40 pm - 1:45 pm

GME Workshop 3A presentation

## Association of Pathology Chairs 2010 Annual Meeting

July 14-16, 2010

Fairmont Olympic Hotel, Seattle, Washington

P  
R  
O  
D  
S

1:45 pm - 1:50 pm	GME Workshop 3B presentation
1:50 pm - 2:00 pm	Discussion
2:00 pm - 2:05 pm	Research Workshop 1 presentation
2:05 pm - 2:15 pm	Discussion
2:15 pm - 2:20 pm	Research Workshop 2 presentation
2:20 pm - 2:30 pm	Discussion
<b>2:30 pm - 3:00 pm</b>	<b>Break, Visit the Exhibits</b> <i>[This is not a Continuing Medical Education activity.]</i> Spanish Foyer
<b>3:00 pm - 5:00 pm</b>	<b>APC Advocacy: Synergies with cooperating societies – alignment for the future of pathology</b> Spanish Ballroom
3:00 pm - 3:05 pm	Opening comments <i>Donald Karcher, MD, The George Washington University Medical Center</i>
3:05 pm - 3:30 pm	Advocacy in the House of Medicine <i>Atul Grover, MD, PhD, Chief Advocacy Officer, Association of American Medical Colleges</i>
<b>3:30 pm - 5:00 pm</b>	<b>Alignment with American Board of Pathology Cooperating Societies</b> Spanish Ballroom
3:30 pm - 3:35 pm	College of American Pathologists <i>Stephen N. Bauer, MD, FCAP, Mercy San Juan Medical Center</i>
3:35 pm - 3:40 pm	American Medical Association Section Council on Pathology <i>Rebecca Johnson, MD, Berkshire Health Systems</i>
3:40 pm - 3:45 pm	United States and Canadian Academy of Pathology <i>Fred Silva, MD</i>
3:45 pm - 3:50 pm	American Society for Investigative Pathology <i>Stanley Cohen, MD, UMDNJ – New Jersey Medical School</i>
3:50 pm - 3:55 pm	Academy of Clinical Laboratory Physicians and Scientists <i>C. Bruce Alexander, MD, University of Alabama, Birmingham</i>
3:55 pm - 4:00 pm	The American Board of Pathology <i>Betsy Bennett, MD, PhD</i>
4:00 pm - 4:05 pm	American Society for Clinical Pathology <i>John Tomaszewski, MD, University of Pennsylvania</i>
4:05 pm - 4:10 pm	Association of Directors of Anatomic and Surgical Pathology <i>Jeffrey Myers, MD, University of Michigan</i>
4:10 pm - 5:00 pm	Discussion
<b>5:00 pm</b>	<b>Meeting adjourns</b>

# Association of Pathology Chairs 2010 Annual Meeting

July 14-16, 2010

Fairmont Olympic Hotel, Seattle, Washington

## Wednesday, July 14, 2010

*[PDAS sessions are not Continuing Medical Education activities.]*

<b>7:00 am - 8:00 am</b>	<b>Breakfast</b> Spanish Foyer
<b>8:00 am - 4:15 pm</b>	<b>PDAS Plenary Session: Back to Basics in the New Health Care Environment</b> Congress Room
8:00 am - 8:05 am	Introduction to PDAS Program <i>Nancy Risenhoover, University of New Mexico; Thomas Dilts, Virginia Commonwealth University/Medical College of Virginia</i>
8:05 am - 9:00 am	Role of Administrator in Teaching <i>Thomas Dilts, Virginia Commonwealth University/Medical College of Virginia</i>
9:00 am - 10:00 am	Informatics and Laboratory Medicine <i>Paul Henderson, University of Washington School of Medicine</i> <i>Barb Prentiss, University of Washington School of Medicine</i>
<b>10:00 am - 10:30 am</b>	<b>Break, Visit the Exhibits</b> Spanish Foyer
10:30 am - 11:25 am	Research Administration <i>Joseph Rondinelli, UMDNJ-New Jersey Medical School</i>
11:25 am - 12:00 pm	Professional Memberships and Certification: Discussion of Benefits - What do all those letters after your name really mean? <i>Moderator: Nancy Risenhoover, University of New Mexico</i>
<b>12:00 pm - 1:30 pm</b>	<b>Lunch &amp; PDAS Business Meeting</b> Congress Room
1:30 pm - 2:45 pm	Clinical Revenue Stream: Then and Now <i>Moderator: Harry Pukay-Martin, The Ohio State University</i>  I. Part A, Part B and the Clinical Professional Component <ul style="list-style-type: none"><li>• <i>John Baci, Children's Hospital Boston</i></li><li>• <i>Susan McCarthy, University of Southern California/Keck School of Medicine</i></li><li>• <i>Martha Miers, Vanderbilt University School of Medicine</i></li></ul> II. Productivity Measures and Faculty Compensation <ul style="list-style-type: none"><li>• <i>Marcia McCall, Wake Forest University School of Medicine</i></li><li>• <i>Judy Elleson, University of Iowa College of Medicine</i></li></ul>
2:45 pm - 3:45 pm	Clinical Revenue Stream Complexities <i>Jane Pine Wood, JD, McDonald Hopkins LLC</i>
3:45 pm - 4:15 pm	Q&A with Jane Pine Wood
<b>4:15 pm - 5:00 pm</b>	<b>Break, Visit the Exhibits</b> Assembly Row Foyer

P  
D  
A  
S

## Association of Pathology Chairs 2010 Annual Meeting

July 14-16, 2010

Fairmont Olympic Hotel, Seattle, Washington

<b>5:00 pm - 6:00 pm</b>	<b>Opening Reception</b> <b>Sponsored by: American Society for Clinical Pathology</b> <i>[This is not a Continuing Medical Education activity.]</i> Spanish Foyer
<b>6:00 pm - 9:00 pm</b>	<b>Keynote Lecture and Banquet</b> Spanish Ballroom
6:00 pm - 6:15 pm	Welcome and Moment of Silence <i>J. Charles Jennette, MD, University of North Carolina, Chapel Hill</i>
6:30 pm - 7:00 pm	Keynote Lecture: Reforming Health Care Delivery <i>Brent C. James, MD, MStat, Chief Quality Officer and Executive Director, Institute for Health Care Delivery Research, Intermountain Healthcare</i>
7:15 pm - 7:45 pm	Graduate Medical Education and Undergraduate Medical Education Awards <i>[This is not a Continuing Medical Education activity.]</i> <i>GME: Carol F. Farver, MD, The Cleveland Clinic Foundation</i> <i>UME: Michele D. Raible, MD, PharmD, Oakland University William</i> <i>Beaumont School of Medicine</i> <i>Presented by: J. Charles Jennette, MD, University of North Carolina, Chapel Hill</i>
7:45 pm - 8:00 pm	Distinguished Service Award <i>[This is not a Continuing Medical Education activity.]</i> David Hardwick, MD, FRCPC, The University of British Columbia Faculty of Medicine <i>Presented by: Richard Hegele, MD, FRCPC, PhD, University of Toronto;</i> <i>Fred Silva, MD, U.S. &amp; Canadian Academy of Pathology</i>

P  
D  
A  
S

### Thursday, July 15, 2010

*[PDAS sessions are not Continuing Medical Education activities.]*

<b>7:00 am - 8:00 am</b>	<b>Breakfast</b> Spanish Foyer
<b>7:00 am - 7:30 am</b>	<b>Workshop leader orientation (Thursday)</b> <i>Peter Jensen, MD, University of Utah School of Medicine</i>
<b>8:00 am - 10:30 am</b>	<b>APC/PDAS Cooperative Session</b> Spanish Ballroom
8:00 am - 8:05 am	Session introduction <i>Robert Hunter, MD, PhD, University of Texas Health Science Center – Houston; Nancy Risenhoover, University of New Mexico</i>
8:05 am - 8:45 am	Healthcare reform: Challenges to academic pathology (getting ahead of the curve) <i>Louis D. Wright, Jr., MD, Pathology Service Associates, LLC</i>
8:45 am - 9:25 am	Challenges in business practices for academic pathology <i>Jane Pine Wood, JD, McDonald Hopkins LLC</i>

## Association of Pathology Chairs 2010 Annual Meeting

July 14-16, 2010

Fairmont Olympic Hotel, Seattle, Washington

- 9:25 am - 10:05 am Pathology market trends: Opportunities and threats for academic pathology  
*Jondavid Klipp, Publisher, Laboratory Economics*
- 10:05 am - 10:20 am MGMA survey update  
*Robert Hunter, MD, PhD, University of Texas Health Science Center – Houston; Nancy Risenhoover, University of New Mexico*
- 10:20 am - 10:30 am Workshop goals orientation  
*Michael Cohen, MD, University of Iowa College of Medicine; Robert Hunter, MD, PhD, University of Texas Health Science Center – Houston*
- 10:30 am - 11:00 am Break, Visit the Exhibits**  
Spanish Foyer
- 11:00 am - 12:00 pm Workshops – Practice & Management (P&M)**
- P&M Workshop 1A – Challenges and opportunities in the evolving market place  
*Cynthia Bevis, North Shore-Long Island Jewish Medical Center; Kenneth Rock, MD, University of Massachusetts Medical Center*  
Congress Room
- P&M Workshop 1B – Challenges and opportunities in the evolving market place  
*David Wooster, Yale University School of Medicine; Kandice Kottke-Marchant, MD, PhD, Cleveland Clinic Foundation*  
Parliament Room
- P&M Workshop 2A/2B – Surveys: What data are needed and how do we get it?  
*Judy Elleson, University of Iowa College of Medicine; Michael Prystowsky, MD, PhD, Montefiore Medical Center/Albert Einstein College of Medicine*  
Belvedere Room
- P&M Workshop 2B – Surveys: What data are needed and how do we get it?  
*Martha Miers, Vanderbilt University School of Medicine; Michael Talbert, MD, University of Oklahoma Health Sciences Center*  
Windsor Room
- 12:00 pm - 1:30 pm PDAS Lunch**  
The Garden Room
- 1:30 pm - 5:00 pm PDAS Plenary: Leading Change and Transition**  
Congress Room
- 1:30 pm - 1:35 pm Charge to PDAS  
*Nancy Risenhoover, University of New Mexico*
- 1:35 pm - 2:30 pm Keynote Speaker: Leading Change and Transition  
*Jeff Turner, Praxis HR, University of Washington HR Consulting Alliance*
- 2:30 pm - 3:30 pm Tools for Leading Change and Transition  
*Jeff Turner, Praxis HR, University of Washington HR Consulting Alliance*

## Association of Pathology Chairs 2010 Annual Meeting

July 14-16, 2010

Fairmont Olympic Hotel, Seattle, Washington

3:30 pm - 4:00 pm	<b>Association &amp; Industry Partner Breakshops</b> <i>[This is not a Continuing Medical Education activity.]</i>  <b>American Society for Clinical Pathology Breakshop</b> Parliament Room  <b>Omnyx, Inc Breakshop</b> Council Room
4:00 pm - 5:00 pm	Panel Discussion – Conversations about Leadership: Common Themes  <i>Moderator: Joseph Rondinelli, UMDNJ-New Jersey Medical School</i> <ul style="list-style-type: none"><li>• <i>Succession Planning: Thomas Dilts, Virginia Commonwealth University/Medical College of Virginia</i></li><li>• <i>Changing Institutions: Susan McCarthy, University of Southern California/Keck School of Medicine</i></li><li>• <i>Creating New Facilities: Marjel Whitmore, Creighton University Medical Center</i></li></ul>
5:45 pm – 6:00 pm	<b>PDAS members meet in lobby to walk to reception</b> Columbia Tower Club (2 blocks away)
6:00 pm - 7:30 pm	<b>PDAS Hospitality Reception at Columbia Tower Club</b> <i>Hosted by Cortex Medical Management</i>

P  
D  
A  
S

### **Friday, July 16, 2010**

*[PDAS sessions are not Continuing Medical Education activities.]*

7:00 am - 8:00 am	<b>Breakfast</b> Spanish Foyer
8:00 am - 10:30 am	<b>PDAS Session: Surveys, Benchmarking, and Data Sanity</b> Congress Room
8:00 am - 8:05 am	Introduction to Session <i>Nancy Risenhoover, University of New Mexico</i>
8:05 am - 8:25 am	Discussion of APC Survey Tool <i>Marjel Whitmore, Creighton University &amp; PDAS Survey Working Group</i>
8:25 am - 9:00 am	MGMA Survey/Benchmarking <i>Meghan McMahon, Medical Group Management Association (MGMA)</i>
9:00 am - 9:45 am	Discussion of Practice & Management Workshops and 2011 Survey Implementation Plans
9:45 am - 10:00 am	ASIP Perspective and Support <i>Priscilla Markwood, Association of Pathology Chairs</i>
10:00 am - 10:30 am	Wrap-Up Morning Session
10:30 am - 11:00 am	<b>Break, Visit the Exhibits</b> Spanish Foyer

**Association of Pathology Chairs 2010 Annual Meeting**

July 14-16, 2010

Fairmont Olympic Hotel, Seattle, Washington

**11:00 am - 12:00 pm Practice & Management Workshop Presentations**  
Spanish Ballroom

11:10 am - 11:15 am P&M Workshop 1A presentation

11:15 am – 11:20 am P&M Workshop 1B presentation

11:20 am - 11:30 am Discussion

11:30 am - 11:35 am P&M Workshop 2A presentation

11:35 am - 11:40 am P&M Workshop 2B presentation

11:40 am - 11:50 am Discussion

**12:00 pm - 1:00 pm PDAS Luncheon**  
Congress Room

**12:00 pm - 1:00 pm PDAS Council Meeting at Lunch**  
Cabinet Room

*[PDAS programming concludes – PDAS members are welcome to attend other APC scheduled programming, outlined below. See APC program for details.]*

**1:00 pm - 2:30 pm Graduate Medical Education and Research Workshop Presentations**  
Spanish Ballroom

1:00 pm - 1:05 pm GME Workshop 1A presentation

1:05 pm - 1:10 pm GME Workshop 1B presentation

1:10 pm - 1:20 pm Discussion

1:20 pm - 1:25 pm GME Workshop 2A presentation

1:25 pm - 1:30 pm GME Workshop 2B presentation

1:30 pm - 1:40 pm Discussion

1:40 pm - 1:45 pm GME Workshop 3A presentation

1:45 pm - 1:50 pm GME Workshop 3B presentation

1:50 pm - 2:00 pm Discussion

2:00 pm - 2:05 pm Research Workshop 1 presentation

2:05 pm - 2:15 pm Discussion

2:15 pm - 2:20 pm Research Workshop 2 presentation

2:20 pm - 2:30 pm Discussion

**2:30 pm - 3:00 pm Break, Visit the Exhibits**  
Spanish Foyer

P  
D  
A  
S



# Association of Pathology Chairs 2010 Annual Meeting

July 14-16, 2010

Fairmont Olympic Hotel, Seattle, Washington

<b>3:00 pm - 5:00 pm</b>	<b>APC Advocacy: Synergies with cooperating societies – alignment for the future of pathology</b> Spanish Ballroom
3:00 pm - 3:05 pm	Opening comments Donald Karcher, MD, The George Washington University Medical Center
3:05 pm - 3:30 pm	Advocacy in the House of Medicine Atul Grover, MD, PhD, Chief Advocacy Officer, Association of American Medical Colleges
<b>3:30 pm - 5:00 pm</b>	<b>Alignment with American Board of Pathology Cooperating Societies</b> Spanish Ballroom
3:30 pm – 3:35 pm	College of American Pathologists Stephen N. Bauer, MD, FCAP, Mercy San Juan Medical Center
3:35 pm - 3:40 pm	American Medical Association Section Council on Pathology Rebecca Johnson, MD, Berkshire Health Systems
3:40 pm - 3:45 pm	United States and Canadian Academy of Pathology Fred Silva, MD
3:45 pm - 3:50 pm	American Society for Investigative Pathology Stanley Cohen, MD, UMDNJ – New Jersey Medical School
3:50 pm - 3:55 pm	Academy of Clinical Laboratory Physicians and Scientists C. Bruce Alexander, MD, University of Alabama, Birmingham
3:55 pm - 4:00 pm	The American Board of Pathology Betsy Bennett, MD, PhD
4:00 pm - 4:05 pm	American Society for Clinical Pathology John Tomaszewski, MD, University of Pennsylvania
4:05 pm - 4:10 pm	Association of Directors of Anatomic and Surgical Pathology Jeffrey Myers, MD, University of Michigan
4:10 pm - 5:00 pm	Discussion
<b>5:00 pm</b>	<b>Meeting adjourns</b>

P  
D  
A  
S

## Association of Pathology Chairs 2010 Annual Meeting

July 14-16, 2010

Fairmont Olympic Hotel, Seattle, Washington

### Wednesday, July 14, 2010

7:00 am - 8:00 am	<b>Breakfast</b> <i>[This is not a Continuing Medical Education activity.]</i> Spanish Foyer
7:00 am - 8:00 am	<b>Breakfast for New UMEDS members with UMEDS Council</b> Parliament Room (Breakfast is available in the Spanish Foyer)
8:00 am - 10:30 am	<b>UMEDS Session: Generational Differences</b> Senate Room
8:00 am - 8:15 am	Welcome and introduction <i>Carolyn Cambor, MD, University of Pennsylvania</i>
8:15 am - 8:45 am	Teaching the millennials: Win-win solutions for members of all generations <i>Tracy Bumsted, MD, MPH, Oregon Health &amp; Science University</i>
8:45 am - 9:55 am	Video demonstrations of commonly encountered situations <i>Tracy Bumsted, MD, MPH, Oregon Health &amp; Science University</i>
9:55 am - 10:30 am	Discussion of creating win-win solutions for members of all generations <i>Led by Tracy Bumsted, MD, MPH, Oregon Health &amp; Science University</i>
10:30 am - 11:00 am	<b>Break, Visit the Exhibits</b> <i>[This is not a Continuing Medical Education activity.]</i> Assembly Foyer
11:00 am - 12:00 pm	<b>UMEDS Panel Discussion: Using Virtual Slides in Pathology Education</b> Senate Room
	Use of virtual slides: Examples of using virtual slides for teaching pathology and histology to medical students <i>John Woosley, MD, PhD, University of North Carolina, Chapel Hill</i>
	Improved time utilization and enhanced cooperative learning through use of virtual microscopy <i>Mark William Braun, MD, Indiana University School of Medicine</i>
	Use of virtual slides in pathology case studies for medical education <i>Patricia Latham, MD, The George Washington University School of Medicine</i>
12:00 pm - 1:30 pm	<b>UMEDS Lunch Presentation</b> Senate Room
12:15 pm - 12:45 pm	Discussion of joint projects with UMEDS & GRIPE members <i>Carolyn L. Cambor, MD, University of Pennsylvania</i>
12:45 pm - 1:15 pm	Preparing students for pathology residency <i>Charles Hitchcock, MD, PhD, The Ohio State University</i>
1:30 pm - 4:00 pm	<b>APC/UMEDS Cooperative Session</b> Spanish Ballroom

## Association of Pathology Chairs 2010 Annual Meeting

July 14-16, 2010

Fairmont Olympic Hotel, Seattle, Washington

- 1:30 pm - 1:35 pm      Session introduction  
*Carolyn Cambor, MD, University of Pennsylvania; Michael Cohen, MD, University of Iowa College of Medicine*
- 1:35 pm - 1:55 pm      U.S. Medical Licensing Examination (USMLE) & National Board of Medical Examiners (NBME): Update and discussion  
*Peter Anderson, DVM, PhD, University Alabama at Birmingham Medical Center*
- 1:55 pm - 2:45 pm      HHMI/AAMC Scientific Foundations for Future Physicians (SFFP) report: Update and discussion  
*Vinay Kumar, MBBS, MD, FRCPath, University of Chicago School of Medicine*
- 2:45 pm - 2:50 pm      In-room mini-break
- 2:50 pm - 3:30 pm      Education scholarship: Rewarding educational contributions of faculty  
*Thomas Viggiano, MD, MEd, Mayo Clinic*
- 3:30 pm - 4:00 pm      Moderated discussion – Developing scholarly educators: The department chair's role  
*Led by Thomas Viggiano, MD, MEd, Mayo Clinic*
- 4:00 pm - 5:00 pm**      **PRODS & UMEDS Cooperative Session**  
Milestones at the interface from undergraduate medical education to graduate medical education  
*Steven Nestler, PhD, Accreditation Council for Graduate Medical Education*  
Metropole Room
- 5:00 pm - 6:00 pm**      **Opening Reception**  
**Sponsored by: American Society for Clinical Pathology**  
*[This is not a Continuing Medical Education activity.]*  
Spanish Foyer
- 6:00 pm - 9:00 pm**      **Keynote Lecture and Banquet**  
Spanish Ballroom
- 6:00 pm - 6:15 pm      Welcome and Moment of Silence  
*J. Charles Jennette, MD, University of North Carolina, Chapel Hill*
- 6:30 pm - 7:00 pm      Keynote Lecture: Reforming Health Care Delivery  
*Brent C. James, MD, MStat, Chief Quality Officer and Executive Director, Institute for Health Care Delivery Research, Intermountain Healthcare*
- 7:15 pm - 7:45 pm      Graduate Medical Education and Undergraduate Medical Education Awards  
*[This is not a Continuing Medical Education activity.]*  
*GME: Carol F. Farver, MD, The Cleveland Clinic Foundation*  
*UME: Michele D. Raible, MD, PharmD, Oakland University William Beaumont School of Medicine*  
*Presented by: J. Charles Jennette, MD, University of North Carolina, Chapel Hill*
- 7:45 pm - 8:00 pm      Distinguished Service Award  
*[This is not a Continuing Medical Education activity.]*  
David Hardwick, MD, FRCPC, The University of British Columbia Faculty of Medicine  
*Presented by: Richard Hegele, MD, FRCPC, PhD, University of Toronto; Fred Silva, MD, U.S. & Canadian Academy of Pathology*

# Association of Pathology Chairs 2010 Annual Meeting

July 14-16, 2010

Fairmont Olympic Hotel, Seattle, Washington

## Thursday, July 15, 2010

7:00 am - 8:00 am

### **Breakfast**

*[This is not a Continuing Medical Education activity.]*  
Spanish Foyer

7:00 am - 7:30 am

### **Workshop leader orientation (Thursday)**

*[This is not a Continuing Medical Education activity.]*  
Peter Jensen, MD, University of Utah School of Medicine  
Kensington Room

8:00 am - 10:30 am

### **UMEDS Plenary Session I**

Senate Room

8:00 am - 8:05 am

Introduction

Carolyn Cambor, MD, University of Pennsylvania

8:05 am - 8:30 am

Teaching Pathology in 2010: Results of a survey of UMEDS members  
Peter Anderson, DVM, PhD, University of Alabama at Birmingham Medical  
Center

8:30 am - 8:55 am

Assessment in medical education

Carolyn L. Cambor, M.D., University of Pennsylvania

8:55 am - 9:00 am

In-room mini-break

9:00 am - 10:00 am

Panel discussion – Methods of assessment beyond multiple  
choice questions

Peter Anderson, DVM, PhD, University of Alabama at Birmingham Medical  
Center; Shivayogi Bhusnurmath, MD, FRCPath, St. George's University  
School of Medicine; Roger Geiss, MD, University of Illinois College of  
Medicine at Peoria; Rani Kanthan, MBBS, MS, FRCS, FRCPSC, FCAP,  
MEd, Royal University Hospital;

10:00 am - 10:30 am

Group Discussion of Assessment Methods

10:30 am - 11:00 am

### **Break, Visit the Exhibits**

*[This is not a Continuing Medical Education activity.]*  
Spanish Foyer

11:00 am - 12:00 pm

### **APC/UMEDS Workshops – Undergraduate Medical Education (UME)**

#### **Workshop 1: Competency-based curricula for medical student education**

UME Workshop 1A - Amy Lin, MD, University of Illinois at Chicago; Michael  
Cohen, MD, University of Iowa College of Medicine  
Council Room

UME Workshop 1B - Charles Hitchcock, MD, PhD, The Ohio State  
University; Janice Lage, MD, Medical University of South Carolina  
Kensington Room

## Association of Pathology Chairs 2010 Annual Meeting

July 14-16, 2010

Fairmont Olympic Hotel, Seattle, Washington

### Workshop 2: Careers in education

UME Workshop 2A/2B - *Harold (Jim) Williams, Robert C. Byrd Health Sciences Center/West Virginia University; Richard Hegele, MD, FRCPC, PhD, University of Toronto*  
St. James Room

12:00 pm - 1:30 pm

**Lunch & UMEDS Business Meeting**  
Senate Room

1:30 pm - 2:40 pm

**Networking Time & APC/UME Committee Meeting**

1:30 pm - 2:40 pm

UMEDS networking time  
*[This is not a Continuing Medical Education activity.]*  
Spanish Foyer

1:30 pm - 2:30 pm

Undergraduate Medical Education Committee Meeting  
*(UMEDS Council Only)*  
*Michael Cohen, MD, University of Iowa College of Medicine;*  
Belvedere Room

2:40 pm - 5:00 pm

**UMEDS Plenary Session II**  
Senate Room

2:40 pm - 3:00 pm

Integrating pathology into the clinical years: Results of a survey of UMEDS members  
*Margret Magid, MD, Mount Sinai School of Medicine*

3:00 pm - 3:45 pm

Panel discussion – Diagnostic rotations: Time for a new requirement?

Spiral learning at Boston University School of Medicine  
*Lija Joseph, MD, Boston University*

“Transition to Clerkships” course  
*Richard Scanlan, MD, Oregon Health & Science University*

3:45 pm - 4:30 pm

Small group discussions – The clinical years: Integration of Pathology and required diagnostic rotations (UMEDS plenary room)

4:30 pm - 5:00 pm

Presentation of small group discussion results

## Friday, July 16, 2010

7:00 am - 8:00 am

**Breakfast**  
*[This is not a Continuing Medical Education activity.]*  
Spanish Foyer

8:00 am - 10:00 am

**APC/UMEDS Research Joint Session**  
Spanish Ballroom

8:00 am - 8:05 am

Session introduction – New technologies in diagnostic imaging  
*Ann Thor, MD, University of Colorado Denver*

8:05 am - 8:35 am

Imaging technology for autopsy pathology and teaching of anatomy  
*Richard Satava, MD, FACS, University of Washington*

# Association of Pathology Chairs 2010 Annual Meeting

July 14-16, 2010

Fairmont Olympic Hotel, Seattle, Washington

8:35 am - 9:05 am	Imaging technologies for tumor identification and diagnosis <i>Guillermo J. Tearney, MD, PhD, Wellman Center for Photomedicine, Massachusetts General Hospital</i>
9:05 am - 9:35 am	Imaging technologies for quantitation and diagnosis related to cytology and cytogenetics <i>Richard Levenson, MD, Brighton Consulting Group</i>
9:35 am - 10:00 am	Panel discussion – The continuing role of the human eye in 21st Century pathology: Will we be replaced by imaging technologies?
<b>10:00 am - 10:30 am</b>	<b>Break, Visit the Exhibits</b> <i>[This is not a Continuing Medical Education activity.]</i> Spanish Foyer
<b>10:30 am - 12:00 pm</b>	<b>Undergraduate Medical Education and Practice &amp; Management Workshop Presentations</b> Spanish Ballroom
10:30 am - 10:35 am	UME Workshop 1A presentation
10:35 am - 10:40 am	UME Workshop 1B presentation
10:40 am - 10:50 am	Discussion
10:50 am - 10:55 am	UME Workshop 2A presentation
10:55 am - 11:00 am	UME Workshop 2B presentation
11:00 am - 11:10 am	Discussion
<b>11:10 am -12:00 pm</b>	<b>UMEDS Options: Practice &amp; Management workshop presentations, networking time</b> <i>[This is not a Continuing Medical Education activity.], or hotel check-out</i>
<b>12:00 pm - 1:00 pm</b>	<b>UMEDS Lunch – Debriefing on UMEDS program</b> <i>[This is not a Continuing Medical Education activity.]</i> Senate Room  <b><i>[UMEDS programming concludes. APC activities below are open to UMEDS Members.]</i></b>
<b>1:00 pm - 2:30 pm</b>	<b>Graduate Medical Education and Research Workshop Presentations</b> Spanish Ballroom
1:00 pm - 1:05 pm	GME Workshop 1A presentation
1:05 pm - 1:10 pm	GME Workshop 1B presentation
1:10 pm - 1:20 pm	Discussion
1:20 pm - 1:25 pm	GME Workshop 2A presentation
1:25 pm - 1:30 pm	GME Workshop 2B presentation
1:30 pm - 1:40 pm	Discussion

UMEDS

## Association of Pathology Chairs 2010 Annual Meeting

July 14-16, 2010

Fairmont Olympic Hotel, Seattle, Washington

1:40 pm - 1:45 pm	GME Workshop 3A presentation
1:45 pm - 1:50 pm	GME Workshop 3B presentation
1:50 pm - 2:00 pm	Discussion
2:00 pm - 2:05 pm	Research Workshop 1 presentation
2:05 pm - 2:15 pm	Discussion
2:15 pm - 2:20 pm	Research Workshop 2 presentation
2:20 pm - 2:30 pm	Discussion
<b>2:30 pm - 3:00 pm</b>	<b>Break, Visit the Exhibits</b> <i>[This is not a Continuing Medical Education activity.]</i> Spanish Foyer
<b>3:00 pm - 5:00 pm</b>	<b>APC Advocacy: Synergies with cooperating societies – alignment for the future of pathology</b> Spanish Ballroom
3:00 pm - 3:05 pm	Opening comments <i>Donald Karcher, MD, George Washington University Medical Center</i>
3:05 pm - 3:30 pm	Advocacy in the House of Medicine <i>Atul Grover, MD, PhD, Chief Advocacy Officer, Association of American Medical Colleges</i>
<b>3:30 pm - 5:00 pm</b>	<b>Alignment with American Board of Pathology Cooperating Societies</b> Spanish Ballroom
3:30 pm - 3:35 pm	College of American Pathologists <i>Stephen N. Bauer, MD, FCAP, Mercy San Juan Medical Center</i>
3:35 pm - 3:40 pm	American Medical Association Section Council on Pathology <i>Rebecca Johnson, MD, Berkshire Health Systems</i>
3:40 pm - 3:45 pm	United States and Canadian Academy of Pathology <i>Fred Silva, MD</i>
3:45 pm - 3:50 pm	American Society for Investigative Pathology <i>Stanley Cohen, MD, UMDNJ – New Jersey Medical School</i>
3:50 pm - 3:55 pm	Academy of Clinical Laboratory Physicians and Scientists <i>C. Bruce Alexander, MD, University of Alabama, Birmingham</i>
3:55 pm - 4:00 pm	The American Board of Pathology <i>Betsy Bennett, MD, PhD</i>
4:00 pm - 4:05 pm	American Society for Clinical Pathology <i>John Tomaszewski, MD, University of Pennsylvania</i>

**Association of Pathology Chairs 2010 Annual Meeting**

July 14-16, 2010

Fairmont Olympic Hotel, Seattle, Washington

4:05 pm - 4:10 pm

Association of Directors of Anatomic and Surgical Pathology  
*Jeffrey Myers, MD, University of Michigan*

4:10 pm - 5:00 pm

Discussion

**5:00 pm**

**Meeting adjourns**



## Association of Pathology Chairs 2010 Annual Meeting

July 14-16, 2010

Fairmont Olympic Hotel, Seattle, Washington

Seena Aisner  
UMDNJ-New Jersey Med Sch  
Dept of Pathology & Lab Medicine  
185 So Orange Avenue  
MSB/C579  
Newark, NJ 07103  
aisnersc@umdnj.edu

C. Bruce Alexander  
U Alabama at Birmingham Med Ctr  
Dept of Pathology  
619 S 19th St South  
Rm WP-P220  
Birmingham, AL 35249-7331  
cba@uab.edu

Michael F. Allard  
U British Columbia  
Dept of Pathology & Lab Medicine  
1081 Burrard St  
Vancouver, BC V6Z 1Y6 Canada  
actinghead@pathology.ubc.ca

Scott Anderson  
U Vermont College of Medicine  
Dept of Pathology  
89 Beaumont Drive  
Burlington, VT 05405  
scott.anderson@vtmednet.org

Peter G. Anderson  
U Alabama at Birmingham Med Ctr  
Dept of Pathology  
1670 University Blvd  
Birmingham, AL 35294-0019  
pga@uab.edu

Douglas Anthony  
Univ of Missouri-Columbia  
Dept of Pathology & Anatomical Sci  
One Hospital Drive  
M263 Medical Science Bldg.  
Columbia, MO 65212  
anthonydc@health.missouri.edu

Gregory Archual  
Case University Hospitals of  
Cleveland  
Dept of Pathology  
11100 Euclid Ave  
Cleveland, OH 44106  
greg.archual@uhhospitals.org

James B. Atkinson  
Vanderbilt University School of Med  
Dept of Pathology  
1161 21st Ave South  
C-3321 MCN 2561  
Nashville, TN 37232-2561  
james.atkinson@vanderbilt.edu

Marie Christine Aubry  
Mayo Clinic  
Dept of Lab Med & Pathology  
200 1st. Street, SW  
Rochester, MN 55905  
aubry.mariechristine@mayo.edu

John Baci  
Children's Hospital Boston / Harvard  
Medical School  
Pathology Administration  
300 Longwood Avenue  
Dept of Pathology - Bader 138  
Boston, MA 02115  
john.baci@childrens.harvard.edu

John R Ball  
American Society for Clinical  
Pathology  
33 West Monroe, Suite-1600  
Chicago, IL 60603  
john.ball@ascp.org

Sanford Barsky  
U Nevada School of Medicine  
Dept of Pathology & Lab Medicine  
One Manville Medical Bldg  
Reno, NV 89557  
sbarsky@medicine.nevada.edu

Nicholas Batalis  
Medical University of South Carolina  
MSC 908  
171 Ashley Avenue, Suite 309  
Charleston, SC 29425-0908  
batalini@musc.edu

Brenda Batts  
Wayne State University Sch of Med  
Dept of Pathology  
540 East Canfield Avenue  
Detroit, MI 48201  
bbatts@med.wayne.edu

Elaine Bearer  
U New Mexico HSC  
1 University Of New Mexico  
Msc 08 4640  
Albuquerque, NM 87131  
ebearer@salud.unm.edu

Frederick Behm  
University of Illinois at Chicago  
Dept of Pathology  
M/C 847, 110 CSN  
840 S. Wood Street  
Chicago, IL 60612  
fredbehm@uic.edu

Rick Bell  
Mopec  
21750 Collidge Highway  
Oak Park, MI 48237  
rbell@mopec.com

Betsy D. Bennett  
American Board of Pathology  
4830 W. Kennedy Blvd  
Suite 690  
Tampa, FL 33609  
bdbennett@abpath.org

Cynthia Bevis  
North Shore-Long Island Jewish  
Medical Center  
Dept of Pathology & Lab Med  
10 Nevada Drive  
Lake Success, NY 11042  
cbevis@nshs.edu

Achyut Bhattacharyya  
U Arizona Hlth Sciences Center  
Dept. of Pathology  
1501 North Campbell (Rm 5205)  
Tucson, AZ 85724-5043  
abhattach@email.arizona.edu

Shivayogi Bhusnurmath  
St. George's Univeristy School of Medicine  
Dept of Pathology/Microbiology  
Usl, One East Main Street, Suite 156  
Bayshore, NY 11706-8399  
sbhusnurmath@sgu.edu

Bharti Bhusnurmath  
St George's Univ Sch of Med  
Dept of Pathology  
Usl, One East Main Street, Suite 156  
Bayshore, NY 11706-8399  
bbhusnurmath@sgu.edu

Steven A. Bigler  
U Mississippi Medical Center  
Dept of Pathology  
2500 N State Street  
Jackson, MS 39216-4505  
sbigler@umc.edu

W. Stephen Black-Schaffer  
Massachusetts General Hospital  
Dept of Pathology  
55 Fruit Street  
Dept Of Pathology Warren 214  
Boston, MA 02114-2696  
sblackschaffer@partners.org

John Bolg  
Medical College of Ohio (University of Toledo)  
Dept of Pathology  
3000 Arlington Ave  
Toledo, OH 43614-2598  
john.bolg@utoledo.edu

Donald M. Bowen  
U Alabama at Birmingham Medical Center  
Dept of Pathology  
500 South 22nd Street  
Suite 404  
Birmingham, AL 35233  
bowen@uab.edu

Mark William Braun  
Indiana University School of Medicine  
Dept of Pathology  
Bloomington, IN 46202-3082  
braunm@indiana.edu

Mark Brissette  
Denver VA Medical Center  
Dept of Pathol  
1610 Little Raven Street, Ste. 508  
Denver, CA 80202-6180  
mark.brissette@va.gov

Antoinette Brooke  
UMDNJ-Robert Wood Johnson Med Sch  
Dept of Pathology & Lab Medicine  
One Robert Wood Johnson Place  
MEB 104  
New Brunswick, NJ 08903  
brookeam@umdnj.edu

## Association of Pathology Chairs 2010 Annual Meeting

July 14-16, 2010

Fairmont Olympic Hotel, Seattle, Washington

J. Gary Brown  
U Colorado School of Medicine  
Dept. of Pathology  
Mail Stop B216  
12631 East 17th Ave, L15-2219  
Aurora, CO 80045  
gary.brown@ucdenver.edu

Leslie A. Bruch  
Univ of Iowa College of Medicine  
Dept of Pathology  
200 Hawkins Drive  
5239-D RCP  
Iowa City, IA 52242  
leslie-bruch@uiowa.edu

Patrick J. Buckley  
Duke University Medical Center  
Dept of Pathology  
Box 3712  
Durham, NC 27710  
patrick.buckley@duke.edu

Tracy Bumsted  
Oregon Health Sciences Univ  
Dept of Pediatrics  
707 SW Gaines Street, MC: CDRC-P  
Portland, OR 97239  
bumstedt@ohsu.edu

Evan Cadoff  
UMDNJ-Robert Wood Johnson Med  
School  
Pathology and Laboratory Medicine  
1 Robert Wood Johnson Place  
MEB 212  
New Brunswick, NJ 08903  
cadoff@umdnj.edu

Carolyn L. Cambor  
Univ of Pennsylvania Sch of Med  
Dept of Pathology & Lab Medicine  
3400 Spruce St  
7.103 Founders Bldg., MC 4283  
Philadelphia, PA 19104  
camborc@uphs.upenn.edu

John Cangelosi  
College of American Pathologists  
325 Waukegan Road  
Northfield, IL 60093  
jcangelosi@gmail.com

Jeffrey L. Casterline  
Drexel University College of  
Medicine  
Dept of Pathology  
245 N 15th St, MS 435  
Philadelphia, PA 19102-1192

Robert Challender  
University of Pennsylvania Health  
System  
Dept of Pathology & Lab Med  
3400 Spruce Street  
6.038 W. Gates Bldg  
Philadelphia, PA 19104-4283  
robert.challender@uphs.upenn.edu

Anthony Chang  
U Chicago School of Medicine  
Dept of Pathology  
5841 S Maryland Ave, BH S-329,  
MC3083  
Chicago, IL 60637  
anthony.chang@uchospitals.edu

Michael J. Clare-Salzler  
U Florida  
Dept of Pathology  
Po Box 100275  
Gainesville, FL 32610  
salzler@ufl.edu

Elizabeth Cochran  
Medical College of Wisconsin  
Pathology  
9200 West Wisconsin Avenue  
Dynacare Lab Bldg., Room LL-L74  
Milwaukee, WI 53226-0509  
ecochran@mcw.edu

Stanley Cohen  
UMDNJ-New Jersey Med School  
Dept of Pathol & Lab Med  
185 S Orange Ave  
MSB C579  
Newark, NJ 07103-2714  
cohenst@umdnj.edu

Michael Cohen  
Univ of Iowa College of Medicine  
Dept of Pathology  
200 Hawkins Dr  
Rm- C660.6h  
Iowa City, IA 52242-1087  
michael-cohen@uiowa.edu

Andrew Connolly  
Palo Alto Medical Foundation  
300 Pasteur Drive  
R248b, Edwards Bldg  
Palo Alto, CA 94305  
connollya@pamfri.org

Richard Conran  
Uniformed Services University  
Health Sciences  
Dept of Pathology  
4301 Jones Bridge Road  
Bethesda, MD 20814  
rconran@usuhs.mil

Richard J. Cote  
U Miami Miller School of Medicine  
Dept of Pathology  
1611 Nw 12th Avenue  
Jmh Holtz Center, Rm 2046 (r-5)  
Miami, FL 33136  
r.cote@med.miami.edu

James M. Crawford  
North Shore-Long Island Jewish  
Medical Center  
Dept. of Pathology & Laboratory  
Medicine  
10 Nevada Drive  
Lake Success, NY 11042  
jcrawford1@nshs.edu

Byron Crawford  
Tulane Univ School of Medicine  
Dept of Pathology  
1430 Tulane Avenue  
SL-79  
New Orleans, LA 70112-1393  
bcrawfo@tulane.edu

John T. Crosson  
U Minnesota  
Dept of Pathol  
420 Delaware St SE, MMC 609  
Minneapolis, MN 55455-0392  
cross008@umn.edu

Mark Curtis  
Thomas Jefferson University Medical Center  
Dept of Pathology, Anatomy & Cell Biology  
132 South 10th Street  
Main 285  
Philadelphia, PA 19107  
mark.curtis@jefferson.edu

Brian Datnow  
Univ of California, San Diego Sch of Medicine  
Dept of Pathology  
200 W Arbor Drive  
#8720, Room 2-120  
San Diego, CA 92037-8720  
bdatnow@ucsd.edu

Paul DeFilippi  
U Massachusetts Medical Center  
Dept of Pathology  
55 Lake Ave North  
Worcester, MA 01655  
paul.defilippi@umassmemorial.org

Thomas Dilts  
Virginia Commonwealth University  
Pathology  
1101 East Marshall St., PO 980662  
Sanger Hall, Rm 4010  
Richmond, VA 23298-0662  
tddilts@vcu.edu

Lisa Dixon  
U Florida College of Medicine  
Dept of Pathology  
1600 SW Archer Road  
Box 100275  
Gainesville, FL 32610-0275  
dixolr@pathology.ufl.edu

William (Tom) Dod  
Duke University Medical Center  
Trent Drive, 3109 Duke South  
Yellow Zone  
Durham, NC 27710  
tom.dod@duke.edu

Virginia Donovan  
Winthrop-Univ Hosp  
Dept of Pathology  
222 Station Plaza North  
Suite-606  
Mineola, NY 11501  
vdonovan@winthrop.org

Jace Doshier  
Bioimagene  
919 Hermosa Court  
Sunnyvale, CA 94085

## Association of Pathology Chairs 2010 Annual Meeting

July 14-16, 2010

Fairmont Olympic Hotel, Seattle, Washington

Barbara S. Ducatman  
Robert C Byrd HSC/West Virginia  
University  
Dept of Pathology  
One Medical Center Drive  
P O Box 9203  
Morgantown, WV 26506-9203  
bducatman@hsc.wvu.edu

Peter Dysert  
Baylor U Medical Center, Dallas  
Dept of Pathology  
3500 Gaston Ave  
Dallas, TX 75246  
peterd@bhcs.com

John N. Eble  
Indiana University School of  
Medicine  
Dept of Pathology & Lab Med  
635 Barnhill Drive Medical Science  
Ms128  
Indianapolis, IN 46202  
jlindsle@iupui.edu

Charles Eby  
Washington University School of  
Medicine  
Dept of Pathology  
660 South Euclid  
Campus Box 8118  
St Louis, MO 63110  
eby@wustl.edu

Derrick Elder  
Elekta Impac Software  
3603 Rio Vista Street  
Houston, TX 77021  
derrick.elder@elekta.com

Ronald J. Elin  
U Louisville, School of Medicine  
Dept of Pathology & Lab Medicine  
627 S Preston St  
208 Med-Dent Dorms  
Louisville, KY 40292  
rjelin01@gwise.louisville.edu

Judy Elleson  
U Iowa College of Medicine  
Dept of Pathology  
200 Hawkins Drive  
Room C660 GH  
Iowa City, IA 52242  
judy-elleson@uiowa.edu

Michael John Esposito  
Long Island Jewish Medical Center  
Dept of Pathology  
270-05 76 Ave  
Room B67  
New Hyde Park, NY 11040  
mesposit@lij.edu

John Fallon  
New York Medical College/St  
Vincent's Catholic Med Ctr  
Dept of Pathology  
Basic Science Building  
Valhalla, NY 10595  
john\_fallon@nymc.edu

D. Greer Falls  
Medical College of Georgia  
Dept of Pathology  
1120 15th Street  
BA 1572  
Augusta, GA 30912-3600  
gfalls@mail.mcg.edu

Tunde Farkas  
Pennsylvania Hospital  
Dept. of Pathology  
800 Spruce Street  
Philadelphia, PA 19107-6192  
tunde.farkas@uphs.upenn.edu

Nelson Fausto  
Univ of Washington  
Dept of Pathol C-516 Hlth Sci Bld  
Box 357470  
Seattle, WA 98195-7470  
nfausto@uw.edu

Martin Fernandez  
U Texas Health Science Center  
Dept. of Pathology  
7703 Floyd Curl Drive  
San Antonio, TX 78229-3900  
FernandezMP@uthscsa.edu

Kristin R. Fiebelkorn  
U Texas Health Science Center  
Dept of Pathology  
7703 Floyd Curl Drive, Mc 7750  
San Antonio, TX 78229-3750  
fiebelkorn@uthscsa.edu

Constance Filling  
College of American Pathologists  
325 Waukegan Road  
Northfield, IL 60093  
cfillin@cap.org

James S. Fine  
Univ of Washington Sch of Med  
Dept of Lab Med  
1959 NE Pacific St, Box 357110  
Seattle, WA 98195-7110  
jsfine@u.washington.edu

Mark T. Friedman  
St. Luke's - Roosevelt Hospital  
Dept of Pathology  
1000 Tenth Avenue  
New York, NY 10019  
markfriedman@chpnet.org

Leo Furcht  
U Minnesota Medical School  
Dept of Lab Med & Pathol  
420 Delaware St Se  
Mmc 609 -760 Mayo  
Minneapolis, MN 55455-0392  
furch001@umn.edu

Billie Fyfe-Kirschner  
UMDNJ-Robert Wood Johnson  
Medical School  
Dept of Pathology & Lab Medicine  
One Robert Wood Johnson Place  
MEB 212  
New Brunswick, NJ 08903  
fyfekibs@umdnj.edu

Stephen J. Galli  
Stanford University Medical Center  
Dept of Pathology  
300 Pasteur Drive, L-235  
Stanford, CA 94305-5324  
sgalli@stanford.edu

Regina Gandour-Edwards  
U California, Davis Health System  
Dept of Pathology & Lab Medicine  
4400 V St  
Path Building  
Sacramento, CA 95817  
regina.gandour-edwards@ucdmc.ucdavis.edu

A. Julian Garvin  
Wake Forest University School of Medicine  
Dept of Pathology  
Medical Center Blvd  
Winston-Salem, NC 27157-1072  
ajgarvin@wfubmc.edu

Roger W. Geiss  
Univ of Illinois College of Medicine (Peoria)  
Dept of Pathology  
One Illini Drive  
PO Box 1649  
Peoria, IL 61656-1649  
rgeiss@uic.edu

M.G.F. Gilliland  
Brody Sch Med/East Carolina Univ  
Brody Med Science Bldg 7S18  
600 Moye Blvd  
Greenville, NC 27858  
mggillil@pcmh.com

Jan Glas  
College of American Pathologists  
325 Waukegan Rd  
Northfield, IL 60093-2750  
jglas@cap.org

Sidney Goldblatt  
Conemaugh Valley Memorial Medical Center  
Pathology  
1086 Franklin St  
Room 2045  
Johnstown, PA 15905  
sgoldbl@conemaugh.org

Curtis Goldblatt  
Conemaugh Memorial Medical Center  
Dept of Laboratory/Pathology  
1086 Franklin St  
Room M2053  
Johnstown, PA 15905  
cgoldbl@conemaugh.org

Evelyn Gopez  
University of Utah  
Dept of Pathology  
Huntsman Cancer Hospital  
1950 Circle Of Hope Drive Suite 3850  
Salt Lake City, UT 84112  
evelyn.gopez@hsc.utah.edu

Stan Gordon  
Cortex Medical Management Systems  
2107 Elliott Avenue #201  
Seattle, WA 98121  
sgordon@cortexmed.com

## Association of Pathology Chairs 2010 Annual Meeting

July 14-16, 2010

Fairmont Olympic Hotel, Seattle, Washington

Chris Gormley  
Omnyx, LLC  
30 Isabella Street, Suite 301  
Pittsburgh, PA 15212  
chris.gormley@omnyx.com

Fred Gorstein  
Thomas Jefferson University Medical  
Center  
Dept of Pathology, Anatomy & Cell  
Biology  
125 South 11th Street  
Main 282  
Philadelphia, PA 19107  
fred.gorstein@jefferson.edu

Sandra Grear  
College of American Pathologists  
Communications  
325 Waukegan Road  
Northfield, IL 60094  
sgrear@cap.org

Margaret Grimes  
Virginia Commonwealth Univ/MCV  
Dept of Pathology  
Po Box 980662  
11th And Marshall Street  
Richmond, VA 23298-0662  
mgrimes@vcu.edu

Atul Grover  
AAMC  
2450 N Street, NW  
Washington, DC 20037  
agrover@aamc.org

Steven Gudowski  
Thomas Jefferson University Medical  
Center  
Dept of Pathology, Anatomy & Cell  
Biol  
1020 Locust Street  
Philadelphia, PA 19107  
steven.gudowski@jefferson.edu

Margaret Gulley  
Univ of North Carolina-Chapel Hill  
Sch Medicine  
Dept of Pathology & Lab Med  
913 Brinkhouse-Bullitt Bldg  
101 Manning Dr  
Chapel Hill, NC 27599-7525  
margaret\_gulley@med.unc.edu

Kymerly Gyure  
Robert C Byrd HSC/WVA University  
Dept of Pathology  
P.o. Box 9203  
Morgantown, WV 26506  
kgyure@hsc.wvu.edu

Jennifer Hampshire  
American Society for Clinical  
Pathology  
Membership Department  
33 W Monroe St, Ste 1600  
Chicago, IL 60603  
jennifer.hampshire@ascp.org

Beth Hansell  
Medical University of South Carolina  
Dept of Pathology & Laboratory  
Medicine  
171 Ashley Avenue, MSC 908  
Charleston, SC 29425-0908  
hansellB@musc.edu

Clifford V. Harding  
Case Western Reserve University  
Dept of Pathol  
10900 Euclid Avenue  
Dept Pathology  
Cleveland, OH 44106-7288  
cvh3@cwru.edu

David F. Hardwick  
The University of British Columbia  
Dean's Office  
Room 317, 2194 Health Sciences  
Mall  
Vancouver, BC V6T 1Z3 Canada  
david.f.hardwick@ubc.ca

Michael Hart  
Univ of Wisconsin Ctr Hlth Sci  
Dept of Pathology  
1300 University Avenue  
Rm 6152 MSC  
Madison, WI 53706-1532  
mnhart@wisc.edu

Richard Haspel  
Beth Israel/Deaconess-East Campus  
Dept of Laboratory Medicine  
330 Brookline Avenue  
Yamins 309  
Boston, MA 02215-5491  
rhaspel@bidmc.harvard.edu

Debra Hazen-Martin  
Medical University of South Carolina  
Hollins Cancer Ctr  
171 Ashley Avenue, MSC 908  
Charleston, SC 29425  
hazenmad@musc.edu

Reid R. Heffner  
University at Buffalo School of  
Medicine  
Dept of Pathology  
3435 Main Street  
206 Farber Hall  
Buffalo, NY 14214-3000  
rheffner@buffalo.edu

Richard Hegele  
University of Toronto  
Dept of Medicine & Pathobiology  
1 King's College Circle  
MSB, Room 6229  
Toronto, ON M5G 1A8 Canada  
richard.hegele@utoronto.ca

James Hempel  
Madigan Army Medical Center  
Dept of Pathology  
9040A Jackson Avenue  
Tacoma, WA 98431  
James.Hempel@us.army.mil

Jay Hess  
Univ of Michigan Medical School  
Dept of Pathology  
5240 Med Sci 1, Spc 5602  
1301 Catherine  
Ann Arbor, MI 48109-5602  
jayhess@med.umich.edu

William F. Hickey  
Dartmouth-Hitchcock Medical Center  
Dept of Pathol  
One Med Ctr Dr - Borwell 4  
Lebanon, NH 03756-0001  
william.f.hickey@dartmouth.edu

Susan Hill  
Indiana University School of Medicine  
Dept of Pathol & Lab Med  
635 Barnhill Drive  
MS12B  
Indianapolis, IN 46202-5120  
suehill@iupui.edu

Charles L. Hitchcock  
The Ohio State Univ  
Dept of Pathology  
1645 Neil Avenue  
Columbus, OH 43210  
charles.hitchcock@osumc.edu

Robert D. Hoffman  
Vanderbilt University School of Medicine  
Dept of Pathology  
1161 21st Avenue South  
Cc3321-a Mcn  
Nashville, TN 37232-2561  
robert.d.hoffman@vanderbilt.edu

Blair Holladay  
ASCP  
33 W Monroe  
Suite 1600  
Chicago, IL 60603  
blair.holladay@ascp.org

Peter Howanitz  
SUNY Downstate Medical Center  
Dept of Pathology  
450 Clarkson Ave  
Box 25  
Brooklyn, NY 11203-2098  
peter.howanitz@downstate.edu

Lydia Howard  
Mt Sinai Med Ctr (Miami Beach)  
Dept of Pathology  
4300 Alton Rd  
Miami Beach, FL 33140  
lhoward@msmc.com

Lydia Howell  
U California, Davis Medical Center  
Dept of Path & Lab Med  
4400 V St  
PATH Building  
Sacramento, CA 95817  
lydia.howell@ucdmc.ucdavis.edu

Phyllis Huettner  
Washington University Med Ctr  
Pathology & Immunology  
660 S Euclid Avenue  
Campus Box 8118  
St Louis, MO 63110  
huettner@wustl.edu

## Association of Pathology Chairs 2010 Annual Meeting

July 14-16, 2010

Fairmont Olympic Hotel, Seattle, Washington

Robert L. Hunter  
U Texas Health Science Center -  
Houston  
Dept of Pathology & Lab Med  
6431 Fannin Street  
MSB 2136  
Houston, TX 77030  
Robert.L.Hunter@uth.tmc.edu

Mujtaba Husain  
U Central Florida  
College of Medicine  
6850 Lake Nona Boulevard  
Orlando, FL 32827  
mhusain@mail.ucf.edu

John Hutter  
SUNY at Stony Brook  
Dept of Pathology  
School of Basic Health Sciences  
BST9 - 140  
Stony Brook, NY 11794-7025  
john.hutter@stonybrook.edu

George Inman  
Medical College of Georgia  
Dept of Pathology  
1120 15th Street  
BF-104  
Augusta, GA 30912  
ginman@mail.mcg.edu

Katherine Jasnosz  
Allegheny General Hospital  
Dept of Pathol & Lab Med  
320 East North Ave  
Pittsburgh, PA 15212  
kjasnosz@wpahs.org

J. Charles Jennette  
U North Carolina-Chapel Hill Sch  
Medicine  
Dept of Pathology & Laboratory  
Medicine  
Manning Dr, CB#7525  
Chapel Hill, NC 27599-7525  
jcj@med.unc.edu

Peter E. Jensen  
Univ of Utah School of Medicine  
Dept of Pathol  
50 North Medical Drive  
Salt Lake City, UT 84132  
allison.boyer@path.utah.edu

Rebecca Johnson  
Berkshire Health Systems  
Berkshire Health Systems  
727 North Street  
Pittsfield, MA 01201  
rjohnson@bhs1.org

Lija Joseph  
Boston University  
Dept of Pathology  
670 Albany St  
Boston, MA 02118  
lija.joseph@bmc.org

Michael Joshi-Guske  
U Florida College of Medicine  
Dept of Pathology, Immunology &  
Lab Medicine  
1329 SW 16th Street, Room 4235  
Gainesville, FL 32608  
guskemj@pathology.ufl.edu

Rani Kanthan  
Royal University Hospital  
Dept of Pathol  
103 Hospital Drive  
Saskatoon, SK S7N 0W8 Canada  
rani.kanthan@saskatoonhealthregio  
n.ca

David R. Kaplan  
University Hospitals Case Medical  
Center/Case Western Reserve Univ  
Dept of Pathol  
Wolstein Research Building, Room  
5132  
2103 Cornell Road  
Cleveland, OH 44106-7288  
david.kaplan@case.edu

Donald Karcher  
George Washington Univ Med Ctr  
Dept of Pathology  
2300 Eye St Nw  
Ross Hall, Room 502  
Washington, DC 20037  
dkarcher@mfa.gwu.edu

Douglas Karsch  
Univ of Miami Miller Sch of Med  
Dept of Pathology  
1611 Nw 12th Avenue  
Jmholtz Bldg Rom 2044, R-5  
Miami, FL 33136  
dkarsch@med.miami.edu

Karen Kaul  
NorthShore University HealthSystem  
Dept of Pathology & Lab Medicine  
2650 Ridge Ave  
Evanston, IL 60201-1783  
kkaul@northshore.org

Joren Keylock  
Madigan Army Medical Center  
Dept of Pathology  
9040A Jackson Avenue  
Tacoma, WA 98431  
joren.keylock@us.army.mil

Scott Kirkley  
U Rochester Medical Center  
Pathology and Laboratory Medicine  
601 Elmwood Ave  
P.O. Box 608  
Rochester, NY 14642  
scott\_kirkley@urmc.rochester.edu

Jondavid Klipp  
Laboratory Economics  
195 Kingwood Park  
Poughkeepsie, NY 12601  
labreporter@aol.com

Angelina Knott  
University of Mississippi Medical Center  
Dept of Pathology  
2500 North State Street  
Jackson, MS 39216  
aknott@umc.edu

Laura Koneval  
Aperio Technologies, Inc  
1360 Park Center Drive  
Vista, CA 92081

Kandice Kottke-Marchant  
Cleveland Clinic Fndn  
Pathology & Laboratory Medicine Inst  
9500 Euclid Ave, L21  
Cleveland, OH 44195  
marchak@ccf.org

Peter J. Kragel  
ECU Brody School of Medicine  
Dept of Pathology & Laboratory Medicine  
600 Moye Blvd  
Room 7S10  
Greenville, NC 27834  
kragelp@ecu.edu

Chris Kramer  
Cortex Medical Management Systems  
2107 Elliott Avenue #201  
Seattle, WA 98121  
ckramer@cortexmed.com

Clarissa Krinsky  
University of New Mexico  
Health Sciences Center, Dept Of Pathology  
MSC08-4640, 1 University of New Mexico  
Albuquerque, NM 87131  
ckrinsky@salud.unm.edu

Steven Kroft  
Medical College of Wisconsin  
Dept of Pathology  
PO Box 26509  
Milwaukee, WI 53226-0509  
skroft@mcw.edu

Vinay Kumar  
Univ of Chicago School of Medicine  
Dept of Pathology MC 3083  
5841 S Maryland Ave  
SBRI S-329  
Chicago, IL 60637-1463  
vkumar@bsd.uchicago.edu

Janice M. Lage  
Medical University of South Carolina  
Dept of Pathology and Laboratory Medicine  
MSC 908  
Charleston, SC 29425-9080  
lagejm@musc.edu

Siang-Hui Lai  
Singapore General Hospital  
Dept of Pathology  
Outram Road  
Singapore, 163608  
lai.siang.hui@sgh.com.sg

# Association of Pathology Chairs 2010 Annual Meeting

July 14-16, 2010

Fairmont Olympic Hotel, Seattle, Washington

Martin Lawlor  
U Michigan Medical School  
Pathology & Laboratory Medicine  
1301 Catherine Street  
M5240 Med Sci I  
Ann Arbor, MI 48109  
lawlorm@med.umich.edu

Richard Levenson  
Principal, Brighton Consulting Group  
52 Greycliff Rd.  
Brighton, MA 02135  
rml@post.harvard.edu

David Lewin  
Medical University of South Carolina  
Dept of Pathol & Lab Med  
165 Ashley Avenue  
Suite-309  
Charleston, SC 29425-0908  
lewin@musc.edu

Fritz Lin  
U California, Irvine College of  
Medicine  
Dept of Pathology & Lab Medicine  
101 The City Drive  
Orange, CA 92868  
flin@uci.edu

Amy Lin  
U Illinois at Chicago  
Dept. of Pathology  
840 S Wood St, CSN 130  
M/C 847  
Chicago, IL 60612-7335  
alin@uic.edu

Julie Lindsley  
Indiana University School of  
Medicine  
Dept of Pathol & Lab Med  
635 Barnhill Dr  
Ms 128  
Indianapolis, IN 46202-5120  
jlindsle@iupui.edu

Robert Low  
University of Colorado Denver  
School of Medicine/Pathology  
12631 East 17th Avenue  
Room 2207  
Aurora, CO 80045  
robert.low@ucdenver.edu

Peter Lucas  
U Michigan Medical School  
1150 West Medical Center Drive  
MSRBII, Room 3510  
Ann Arbor, MI 48109-0602  
plucas@med.umich.edu

Steve Mackie  
Elsevier/Saunders/Mosby  
2710 59th Street, SW  
Everett, WA 98203  
s.mackie@elsevier.com

Ginny Mackie  
Elsevier/Saunders/Mosby  
2710 59th Street, SW  
Everett, WA 98203  
mackiesg@verizon.net

Trevor Macpherson  
Univ of Pittsburgh Medical School  
Dept of Pathology  
3550 Terrace St  
Scaife Hall Suite A-711  
Pittsburgh, PA 15261  
tmacpherson@mail.magee.edu

Margret Magid  
Mount Sinai School of Medicine  
Dept of Pathology  
Box 1194  
Gustave L. Levy Place  
New York, NY 10029  
margret.magid@mountsinai.org

Carole Malan  
U Arizona Hlth Sciences Center  
Dept of Pathology  
2030 East Speedway  
#110  
Tucson, AZ 85719  
cmalan@uph.org

Jay Mann  
Aperio Technologies, Inc  
1360 Park Center Drive  
Vista, CA 92081

Shahla Masood  
Univ of Florida Hlth Sci Ctr  
Dept of Pathology  
655 W 8th St  
Box C-505  
Jacksonville, FL 32209-6511  
shahla.masood@jax.ufl.edu

Marcia Huston McCall  
Wake Forest University School of  
Medicine  
Dept of Pathol  
Winston-Salem, NC  
mmccall@wfubmc.edu

Susan McCarthy  
U Southern CA/LAC+USC/Keck Sch  
of Med  
Pathology & Lab Med  
1200 North State St  
Room 2900  
Los Angeles, CA 90033-1084  
susanmcc@usc.edu

Linda McGuire  
SUNY Downstate Medical Center  
Dept of Pathology  
450 Clarkson Ave - Box 25  
Brooklyn, NY 11203-2098  
linda.mcguire@downstate.edu

Barbara J. McKenna  
Univ of Michigan  
Dept of Pathology  
1500 East Medical Center Drive  
2G332UH  
Ann Arbor, MI 48109-0054  
barbmcke@umich.edu

Linda McLean  
University of Oklahoma - College of  
Medicine  
Pathology  
940 SI Young Blvd.  
Dept. Of Pathology - Bmsb 451  
Oklahoma City, OK 73104  
linda-mclean@ouhsc.edu

Meghan McMahon  
Medical Group Management Association  
Survey Operations  
104 Inverness Terrace East  
Englewood, CO 80112  
mmcmahon@mgma.com

Diana Medina  
Univ of Texas Health Science Center  
Dept of Pathology  
7703 Floyd Curl Drive  
MC 7750  
San Antonio, TX 78229-3900  
medinad@uthscsa.edu

George K. Michalopoulos  
U Pittsburgh  
Dept of Pathology  
203 Lothrop Street  
S-410 Biomedical Science Tower  
Pittsburgh, PA 15261  
michalopoulosgk@upmc.edu

Martha Miers  
Vanderbilt University School of Medicine  
Dept of Pathology  
C-3322 Medical Center North  
1161 21st Ave So  
Nashville, TN 37232-2561  
martha.miers@vanderbilt.edu

Karen Milakovic  
Pennsylvania State College of Medicine  
Dept. of Pathology & Lab Medicine  
MS Hershey Med Ctr, PO Box 850  
Mail Code 160  
Hershey, PA 17033  
kmilakovic@hmc.psu.edu

Margaret W. Miles  
Oregon Health Sciences University  
Dept of Pathology  
3181 SW Sam Jackson Pk Rd  
Mail Code L-113  
Portland, OR 97239  
milesm@ohsu.edu

Douglas C. Miller  
U Missouri  
Dept of Pathol & Anatomical Sci  
One Hospital Dr  
Columbia, MO 65212  
millerdc@health.missouri.edu

Ira Miller  
Rush-Presbyterian-St Luke's Medical Ctr  
Dept of Pathology  
1653 West Congress Parkway  
Chicago, IL 60612-3864  
Ira\_Miller@rush.edu

Suzanne S. Mirra  
SUNY Downstate Medical Center  
Dept of Pathol  
450 Clarkson Ave - Box 25  
Brooklyn, NY 11203-2098  
suzanne.mirra@downstate.edu

Fatima Mohamud  
U California, Davis Medical Center  
Dept of Path  
4400 V St  
Sacramento, CA 95817  
fatima.mohamud@ucdmc.ucdavis.edu

## Association of Pathology Chairs 2010 Annual Meeting

July 14-16, 2010

Fairmont Olympic Hotel, Seattle, Washington

Jon S. Morrow  
Yale University School of Medicine  
Dept of Pathol  
310 Cedar St  
New Haven, CT 06510-3218  
jon.morrow@yale.edu

Lawrence Moser  
Medical University of South Carolina  
Dept of Pathology and Laboratory  
Medicine  
171 Ashley Avenue  
Msc 908  
Charleston, SC 29425-9080  
moserl@muscu.edu

Robert E Mrak  
Univ of Toledo Hlth Sci Campus  
Dept of Pathology  
3000 Arlington Avenue  
Toledo, OH 43614  
Robert.Mrak@UToledo.edu

William A. Muller  
Northwestern University Feinberg  
School of Medicine  
Dept of Pathology  
303 East Chicago Avenue  
Ward 3-140  
Chicago, IL 60611-3008  
wamuller@northwestern.edu

Jerald E. Mullersman  
East Tenn State Univ/James H  
Quillen Coll Med  
Dept of Pathology  
P O Box 70568  
Johnson City, TN 37614  
mullersm@etsu.edu

Jeffrey L. Myers  
U Michigan  
Dept of Pathology  
2G332 UH 1500 E. Medical Center Dr.  
Ann Arbor, MI 48109  
myerjeff@umich.edu

Wesley Y. Naritoku  
Keck Sch of Med of USC/LAC+USC  
Med Ctr  
Dept of Pathology & Lab Med  
1100 North State St  
Clinic Tower A7a 119  
Los Angeles, CA 90033-1084  
naritoku@usc.edu

Cynthia C. Nast  
Cedars-Sinai Medical Center  
Dept of Path & Lab Med  
8700 Beverly Blvd  
Los Angeles, CA 90048  
nast@cshs.org

Beverly Nelson  
Northwestern University Med Sch  
Dept of Pathol  
251 E. Huron Street, Rm 7-209  
Feinberg Pavilion  
Chicago, IL 60611  
bpnelson@northwestern.edu

Steven P. Nestler  
ACGME  
Residency Review Cte - Path  
515 N State St Ste 2000  
Chicago, IL 60610-4322  
nestler345@sbcglobal.net

Ann Neumann  
College of American Pathologists  
Education  
325 Waukegan Road  
Northfield, IL 60093  
aneumann@cap.org

Santo V. Nicosia  
Univ of South Florida Col of Med  
Dept of Pathol & Cell Biology  
12901 Bruce B Downs Blvd  
MDC Box 11  
Tampa, FL 33612-4799  
snicosia@health.usf.edu

Nancy Nye  
Univ North Carolina at Chapel Hill  
Dept of Pathology & Laboratory  
Medicine  
CB#7525, Brinkhous-Bullitt Bldg  
Chapel Hill, NC 27599-7525  
Nancy.Nye@pathology.unc.edu

Juan Pablo Olano  
U Texas Medical Branch  
Dept of Pathology  
301 University Blvd  
Route 0428  
Galveston, TX 77555-0428  
jolano@utmb.edu

Darrell O'Sullivan  
Univ of California, Davis Medical  
Center  
Dept of Pathol & Lab Medicine  
4400 V Street  
Sacramento, CA 95817  
darrell.osullivan@ucdmc.ucdavis.edu

Pam Palmersheim  
College of American Pathologists  
325 Waukegan Road  
Northfield, IL 60093

Corey Parker  
U Illinois College of Medicine  
Dept of Pathology  
840 S. Wood Street, CSN Room 130  
Chicago, IL 60612  
cjp@uic.edu

Tristram Parslow  
Emory University Hospital  
Dept of Pathology & Lab Med  
1364 Clifton Road Ne  
Rm H-182  
Atlanta, GA 30322  
tparslo@emory.edu

Ian Paul  
U New Mexico School of Medicine  
Dept. of Pathology  
915 Camino de Salud  
Albuquerque, NM 87131-5301  
idpaul@salud.unm.edu

Yuri Persidsky  
Temple Univ School of Medicine  
Depts of Pathology & Lab Medicine  
3401 North Broad Street  
Pathology & Laboratory Medicine Room 243b  
Philadelphia, PA 19140  
yuri.persidsky@tuhs.temple.edu

Diane Persons  
Univ of Kansas Medical Center  
Dept of Cyto genetics Lab  
3901 Ranbow Blvd  
Kansas City, KS 66160  
dpersons@kumc.edu

Barbara Petit  
U Texas Medical Branch  
Dept of Pathology  
301 University Blvd  
Galveston, TX 77555-0609  
bhpetit@utmb.edu

Carol Petito  
Univ of Miami Sch of Med/Jackson Memorial  
Hospital  
Dept of Pathology  
4510 Santa Maria Street  
Coral Gables, FL 33146  
cpetito@med.miami.edu

John D. Pfeifer  
Washington University, School of Medicine  
Dept of Anatomic Pathol  
660 South Euclid, Campus Box 8118  
St Louis, MO 63110-1093  
pfeifer@wustl.edu

Carrie Phillips  
Indiana University School of Medicine  
Dept of Pathology  
635 Barnhill Drive, MS 128  
Indianapolis, IN 46202  
cphilli3@iupui.edu

Miriam Post  
U Colorado School of Medicine  
Dept of Pathology  
12605 E 16th Ave  
Mail Stop F-768  
Aurora, CO 80045  
miriam.post@ucdenver.edu

Suzanne Z. Powell  
Methodist Hospital System  
Dept of Pathology  
6565 Fannin, MS 205  
Houston, TX 77030  
spowell@tmhs.org

Barb Prentiss  
Univ of Washington Sch of Med  
Dept of Pathology  
C516 Hsb, Box 357470  
University Of Washington  
Seattle, WA 98195-7470  
bpbalasc@uw.edu

Susan Erin Presnell  
Medical University of South Carolina  
Dept of Pathol & Forensics  
165 Ashley Ave Ste 309 POB 250908  
MSC 908  
Charleston, SC 29425-0908  
mcconnse@muscu.edu

## Association of Pathology Chairs 2010 Annual Meeting

July 14-16, 2010

Fairmont Olympic Hotel, Seattle, Washington

Michael B. Prystowsky  
Montefiore Med Ctr/Albert Einstein  
Col of Med  
Dept of Pathol  
1300 Morris Park Ave - Belfer 713  
Bronx, NY 10461  
michael.prystowsky@einstein.yu.edu

Harry E. Pukay-Martin  
The Ohio State University  
Department of Pathology  
1645 Neil Avenue  
129 Hamilton Hall  
Columbus, OH 43210-1218  
harry.pukay-martin@osumc.edu

Petrie M. Rainey  
Univ of Washington Sch of Med  
Dept of Lab Med  
1959 NE Pacific St - Box 357110  
NW 120  
Seattle, WA 98195-7110  
pmrainey@u.washington.edu

Rageshree Ramachandran  
U California, San Francisco Sch  
Medicine  
Dept of Pathology  
505 Parnassus Rm M590 Box 0511  
San Francisco, CA 94143-0511  
rageshree.ramachandran@ucsf.edu

Robert L. Reddick  
U Texas Health Science Center  
Dept of Pathology  
7703 Floyd Curl Dr - MC 7750  
San Antonio, TX 78229-3900  
reddick@uthscsa.edu

Daniel Remick  
Boston University School of  
Medicine  
Dept of Pathology  
715 Albany Street L804  
Boston, MA 02118  
remickd@bu.edu

Nancy Risenhoover  
Univ of New Mexico Sch of Med  
Dept of Pathology  
915 Camino de Salud  
Albuquerque, NM 87131-501  
nrisenhoover@salud.unm.edu

Stanley Robboy  
Duke Univ Med Ctr  
PO Box 3712  
Durham, NC 27710  
stanley.robboy@duke.edu

Mary Jo Robinson  
Pacific Northwest University  
Dept of Pathology  
200 University Parkway  
Room 227  
Yakima, WA 98901  
mrobinson@pnwu.org

Kenneth L. Rock  
U Massachusetts Medical Center  
Dept of Pathol  
55 Lake Ave North  
Worcester, MA 01655  
Kenneth.Rock@umassmed.edu

Amy M. Rojiani  
Medical College of Georgia  
Dept of Pathol  
1120 15th Street  
Murphy Bldg, BF104  
Augusta, GA 30912  
arojiani@mail.mcg.edu

Joseph Rondinelli  
UMDNJ-New Jersey Med School  
Dept of Pathol & Lab Med  
185 S Orange Avenue  
MSBC-573  
Newark, NJ 07103  
rondinj@umdnj.edu

Susan Roseff  
Virginia Commonwealth Univ/MCV  
Pathology  
1101 E Marshall Street  
Rm 6230 - Trans Med  
Richmond, VA 23298-0662  
sroseff@mcvh-vcu.edu

Kevin A. Roth  
U Alabama at Birmingham Medical  
Center  
Div of Neuropathology  
619 19th Street South; Wp P220  
Birmingham, AL 35249-7331  
karoth@uab.edu

Brian Rudolph  
U Pittsburgh  
Dept of Pathology  
200 Locust Street  
S419 BST  
Pittsburgh, PA 15213  
rudolphb@upmc.edu

Andrea Saenim  
Univ of Illinois, Chicago  
Dept of Pathology  
820 S Wood Street  
Room-130 CSN  
Chicago, IL 60612  
sandra@uic.edu

Jeffrey E. Saffitz  
Beth Israel Deaconess Medical  
Center  
Dept of Pathol, ES102  
330 Brookline Avenue  
Boston, MA 02215  
jsaffitz@bidmc.harvard.edu

Diva Salomao  
Mayo Clinic  
Dept of Lab Medicine & Pathology  
530 Hilton Bldg  
Rochester, MN 55905  
salomao.diva@mayo.edu

Samuel A. Santoro  
Vanderbilt University School of  
Medicine  
Dept of Pathology  
1161 21st Avenue South  
C-3322 Mcn  
Nashville, TN 37232-2561  
samuel.santoro@vanderbilt.edu

Linda Schiffhauer  
U Rochester Medical Center  
601 Elmwood Avenue, Box 626  
Rochester, NY 14642  
linda\_schiffhauer@urmc.rochester.edu

Suzanne Scott  
U Kansas School of Medicine  
Dept of Pathology & Laboratory Medicine  
3901 Rainbow Blvd  
MS 3045  
Kansas City, KS 66160-7410  
sscott@kumc.edu

Dale Selby  
USAF/Wilford Hall Med Ctr  
Dept of Pathology  
8202 Creekrun Path  
San Antonio, TX 78249  
dale.selby@us.af.mil

Michael E. Selsted  
Univ of Southern California  
Dept of Pathol  
1200 North State Street  
Room 2900  
Los Angeles, CA 90033-1084  
selsted@usc.edu

Kenneth R. Shroyer  
Stony Brook Medical Center  
Dept of Pathology  
University Hospital Health Sciences Center  
BST-9, Room-140  
Stony Brook, NY 11794-8691  
kenneth.shroyer@stonybrook.edu

Fred G. Silva  
US-Canadian Acad of Path  
3643 Walton Way Extension  
Augusta, GA 30909  
fsilva@uscap.org

John Sinar  
Yale University School of Medicine  
Dept of Pathol  
310 Cedar St Po Box 208023  
Po Box 208023  
New Haven, CT 06520-8023  
john.sinar@yale.edu

Brian R. Smith  
Yale University School of Medicine  
Dept of Laboratory Medicine  
333 Cedar Street  
P O Box 208035  
New Haven, CT 06520-8035  
Brian.Smith@yale.edu

Mark E. Sobel  
ASIP  
9650 Rockville Pike  
Bethesda, MS 20814  
mesobel@asip.org

Richard Sobonya  
Arizona Health Sciences Center  
Dept of Pathology  
1501 N Campbell  
Tucson, AZ 85724-5108  
rsobonya@umcaz.edu



## Association of Pathology Chairs 2010 Annual Meeting

July 14-16, 2010

Fairmont Olympic Hotel, Seattle, Washington

V. O. Speights  
Scott & White Hospital  
Dept of Pathology  
2401 S 31st St  
Temple, TX 76508  
vspeights@swmail.sw.org

Constance Stanton  
Wake Forest University School of  
Medicine  
Dept of Pathology  
Medical Center Blvd  
Winston-Salem, NC 27157-1072  
stanton@wfubmc.edu

Jacob J. Steinberg  
Montefiore Med Ctr/Albert Einstein  
Coll of Med  
Dept of Pathol  
1300 Morris Park Ave Belfer 713  
Bronx, NY 10461-1975  
jsteinbe@montefiore.org

Judy Sterry  
University of Rochester  
Dept of Lab & Pathol Med  
Box 626  
Rochester, NY 14642  
judy\_sterry@urmc.rochester.edu

David Stockman  
Medical College of Wisconsin  
Dept of Pathology  
9200 West Wisconsin Avenue  
Milwaukee, WI 53226-0509  
dstockman@mcw.edu

Babatunde Stokes  
Pitt County Memorial Hospital-East  
Carolina Univ  
Dept of Pathology & Laboratory  
Medicine  
2100 Statonsburg Road  
Greenville, NC 27834  
stokesba@ecu.edu

Christopher P. Stowell  
Mass Gen Hosp  
Blood Transfusion Service  
55 Fruit St  
Boston, MA 02114  
cstowell@partners.org

Kelley W. Suskie  
U Arkansas for Medical Sciences  
Dept of Path  
4301 West Markham Slot 517  
Little Rock, AR 72205-7101  
ksuskie@uams.edu

Saul Suster  
The Medical College of Wisconsin  
Dept of Pathology  
Dynacare Lab Building, Rm-226  
9200 W. Wisconsin Avenue  
Milwaukee, WI 53226  
ssuster@mcw.edu

Michael L. Talbert  
University of Oklahoma Health  
Sciences Center  
Dept of Pathology  
940 Stanton L. Young Blvd.  
BMSB-451  
Oklahoma City, OK 73104  
michael-talbert@ouhsc.edu

Enrique Terrazas  
Univ of California, San Francisco  
Sch Medicine  
Dept of Lab Med  
185 Berry Street  
Suite-290  
San Francisco, CA 94107  
enrique.terrazas@ucsf.edu

Karl Theil  
Cleveland Clinic Foundation  
Pathology & Lab Medicine Institute  
9500 Euclid Avenue  
L30  
Cleveland, OH 44195  
theilk@ccf.org

Nancie Thompson  
American Society for Clinical  
Pathology  
Dept Membership  
33 West Monroe  
Suite-1600  
Chicago, IL 60603  
Nancie.Thompson@ascp.org

Ann D. Thor  
University of Colorado Denver  
Dept of Pathol  
Mail Stop B216  
12631 East 17th Ave, Rm L15-2215  
Aurora, CO 80045  
ann.thor@ucdenver.edu

Gregory A. Threatte  
SUNY Upstate Medical University  
Dept of Pathology  
750 East Adams Street  
Syracuse, NY 13210-2306  
threatte@upstate.edu

Lowell Tilzer  
Univ of Kansas Med Ctr  
Dept of Pathology  
3901 Rainbow Blvd 1405 Bell  
Kansas City, KS 66160-7410  
ltilzer@kumc.edu

Charles Timmons  
Univ of Texas Southwestern Med  
Sch  
Dept of Pathology  
5323 Harry Hines Blvd  
Dallas, TX 75390-9072  
charles.timmons@utsouthwestern.edu

John Tomaszewski  
U Pennsylvania  
Dept of Pathology & Lab Medicine  
3400 Spruce Street  
6.036 Gates Bldg  
Philadelphia, PA 19128  
john.tomaszewski@uphs.upenn.edu

Lily Tuan  
Northwestern Univ Med Sch  
Dept of Pathol  
303 E Chicago Ave  
Chicago, IL 60611-3072  
ltuan@northwestern.edu

J. Allan Tucker  
Univ of South Alabama Med Ctr  
Dept of Pathology  
2451 Fillingim Street  
Mobile, AL 36617  
atucker@usouthal.edu

Richard S. Vander Heide  
Louisiana State University Health Science  
Center  
Dept of Pathology  
1901 Perdido Street  
New Orleans, LA 70112  
rvand2@lsuhsc.edu

Thomas Viggiano  
Mayo Clinic  
Mayo Medical School  
200 First Street SW  
Rochester, MN 55902  
viggiano.thomas@mayo.edu

Carole A. Vogler  
St Louis Univ Sch of Med  
Dept of Pathology  
1402 South Grand Blvd  
St Louis, MO 63104  
voglerca@slu.edu

Jay Wagner  
American Society for Clinical Pathology  
(ASCP)  
Dept of Education and Assessment  
33 W Monroe Street  
Suite-1600  
Chicago, IL 60603  
jay.wagner@ascp.org

Kai Wang  
Univ of California, San Francisco  
Dept of Pathology  
185 Berry Street, Suite-100  
San Francisco, CA 94107  
kai.wang@ucsf.edu

Li Juan Wang  
Brown University Biomedical Center  
Dept of Pathology  
34 Meadowbrook Drive  
Barrington, RI 02806  
lwang@lifespan.org

Douglas A. Weeks  
Oregon Health Sciences University  
Dept of Pathology  
3181 Sam Jackson Park Road  
L113  
Portland, OR 97239  
weeksd@ohsu.edu

Marcia R. Weis  
Saint Louis University School of Medicine  
Department of Pathology  
1402 S Grand Blvd  
St Louis, MO 63104  
mweis4@slu.edu

## Association of Pathology Chairs 2010 Annual Meeting

July 14-16, 2010

Fairmont Olympic Hotel, Seattle, Washington

Ronald Weiss  
Univ Utah Med Sch, C/O Arup Labs  
500 Chipeta Way  
Salt Lake City, UT 84108  
weissrl@aruplab.com

David J. Weissmann  
UMDNJ-Robt Wood Johnson Med  
School  
Dept of Pathology & Lab Medicine  
New Brunswick, NJ 08901  
weissmdj@umdnj.edu

Thomas M Wheeler  
Baylor College of Medicine  
Dept of Pathology  
One Baylor Plaza  
Bcm 315  
Houston, TX 77030-3498  
twheeler@bcm.edu

Donald Wheeler  
U South Florida/College of Medicine  
Dept of Pathology  
12901 Bruce B Downs Blvd  
MDC 11  
Tampa, FL 33612-4799  
dwheeler@health.usf.edu

Marjel Whitmore  
Creighton University Medical Center  
Dept of Pathology  
601 North 30th Street  
Suite 2469  
Omaha, NE 68131  
marjelwhitmore@creighton.edu

Jessica Wieberg  
U Missouri  
Department of Pathology and  
Anatomical Services  
1 Hospital Drive, Medical Science  
Bldg M263  
Columbia, MO 65212  
wiebergj@missouri.edu

David S. Wilkinson  
Virginia Commonwealth Univ/MCV  
Dept of Pathology  
1101 E Marshall Street  
Box 980662  
Richmond, VA 23298-0662  
dswilkin@vcu.edu

Thomas Williams  
Univ of New Mexico  
Dept of Pathology  
915 Camino de Salud  
Albuquerque, NM 87131-5301  
twilliams@salud.unm.edu

Marsha Williams  
U of Utah School of Medicine  
Dept of Pathology  
50 North Medical Drive  
Suite 1100  
Salt Lake City, UT 84132  
marsha.williams@path.utah.edu

Rebecca Williams  
Hartford Hospital  
Dept of Pathol & Lab Med  
80 Seymour Street  
P O Box 5037  
Hartford, CT 06102-5037  
rwillia@harthosp.org

Harold Williams  
Robert C Byrd HSC/WVA University  
Dept of Pathology  
1011 Royal Oaks Drive  
Morgantown, WV 26508  
hjwilliams@hsc.wvu.edu

Gayle L. Winters  
Brigham & Women's Hospital  
Dept of Pathology  
75 Francis Street  
Boston, MA 02115  
gwinters@partners.org

Jane Pine Wood  
McDonald Hopkins  
956 Main  
Dennis, MA 02638  
jwood@mcdonaldhopkins.com

John Woosley  
Univ of North Carolina Sch of Med  
Dept of Pathology & Lab Medicine  
Manning Dr  
CB #7525  
Chapel Hill, NC 27514  
jwoosley@unch.unc.edu

David Wooster  
Yale University School of Medicine-  
BML140  
Dept. of Pathology  
310 Cedar Street Box 208023  
New Haven, CT 06520-8023  
david.wooster@yale.edu

Louis D. Wright  
Pathology Service Associates, LLC  
PO Box 100559  
Florence, SC 29501-0559  
ldwright@psapath.com

Tong Wu  
Tulane University Health Sciences  
Center  
Dept of Pathology & Lab Medicine  
1430 Tulane Avenue, SL-79  
New Orleans, LA 70112-1393  
twu@tulane.edu

Nadeem Zafar  
U Tennessee Medical Group, Inc.  
Department of Pathology  
930 Madison Ave  
Room 534  
Memphis, TN 38163-0001  
nzafar@uthsc.edu

Fernando Zambrano  
U of Southern CA/LAC+USC/Keck Sch of Med  
Dept. of Pathology & Laboratory Medicine  
1200 North State St  
Room 2900  
Los Angeles, CA 90033-1084  
fzambrano@keck.usc.edu

Dani S. Zander  
Pennsylvania State College of Medicine  
Dept of Pathology  
MC H083, PO Box 850  
500 University Drive  
Hershey, PA 17033-0850  
dzander@hmc.psu.edu

Xiaohui (Sheila) Zhao  
U California, Irvine College of Medicine  
Dept of Pathology & Laboratory Medicine  
101 The City Drive S.  
Bldg 1-Rm3426, RT120A  
Irvine, CA 92868  
zhaox@uci.edu

Joel Ziebarth  
LCM Pathologists P.C.  
Dept of Pathology  
1305 W. 18th Street  
P O Box 5134  
Sioux Falls, SD 57117  
jziebarth@lcmopath.com

Suzanne Ziemnik  
American Society for Clinical Pathology  
Education & Assessment  
33 W Monroe Street  
Suite-1600  
Chicago, IL 60603  
suzanne.ziemnik@ascp.org



**ENTERPRISE DIGITAL PATHOLOGY**

Developed in Collaboration with UPMC

Learn how high-throughput pathology departments can increase efficiencies, improve patient care and enhance access to pathologists by going digital.

**Omnyx "Break Shop" Session**

Enterprise Digital Pathology Application  
in High Case Throughput Academic  
Medical Centers

**Thursday, July 15, 2010**  
**3:30 - 4:00 PM**

Council Room (Assembly Row)  
Refreshments will be provided.



**ATTEND THE  
OMNYX  
BREAK SHOP  
SESSION**



Omnyx is a joint venture between GE Healthcare and The University of Pittsburgh Medical Center that has developed the first and only Enterprise Digital Pathology solution for routine sign out in high-throughput pathology departments. From image scanning and case preparation to case review and sign out, Omnyx improves efficiency, quality and access by digitizing the pathologist's workflow processes.

Omnyx products are in development and have not been approved by the U.S. FDA for diagnostic use.



# ANNUAL REVIEWS

The Essential Resource for Pathology Research

Annual Reviews offers comprehensive, timely collections of critical, topical reviews written by acknowledged experts. Annual Reviews journals examine 40 focused disciplines within the Biomedical, Life, Physical, and Social Sciences. Our Editorial Committees are specialists in selecting and synthesizing literature into concise, insightful review articles. As a result, Annual Reviews journals are among the most highly cited in scientific literature and are consistently ranked within the top ten of journals for their disciplines as indexed by the ISI® Journal Citation Reports (JCR®).

## **Annual Review of Pathology: Mechanisms of Disease**

Volume 5 • February 2010 • Online & In Print • <http://pathol.annualreviews.org>

### **Co-Editors:**

**Abul K. Abbas**, *University of California, San Francisco*

**Stephen J. Galli**, *Stanford University School of Medicine*

**Peter M. Howley**, *Harvard Medical School*

The *Annual Review of Pathology: Mechanisms of Disease*, in publication since 2006, covers significant advances in our understanding of the initiation and progression of important human diseases. Emphasis is placed on current and evolving concepts of disease pathogenesis, molecular genetic and morphologic alterations associated with diseases, and clinical significance.

This journal is intended for biomedical scientists, physicians and pathologists interested in disease mechanisms, and students of medicine and related disciplines.

**Access this and all Annual Reviews journals via your institution  
at [www.annualreviews.org](http://www.annualreviews.org)**