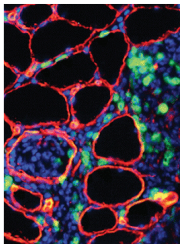
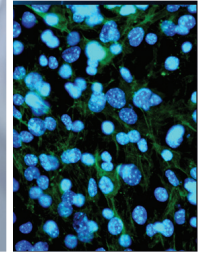


# Meeting Program



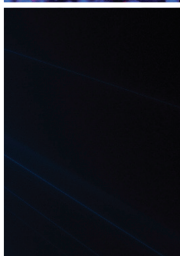
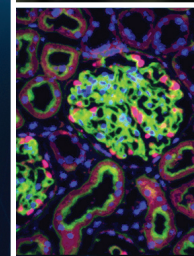
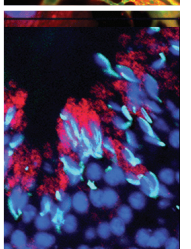
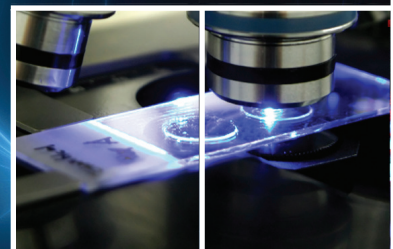
[www.apcprods.org](http://www.apcprods.org)



## Association of Pathology Chairs

2011 Annual Meeting  
July 13-15, 2011  
Monterey, CA (USA)

Save the Date!  
APC 2012 Annual Meeting  
July 11-13, 2012  
Monterey, California



# The Next Generation Digital Pathology Solution has arrived!

View the affordable **pathXL** educational tool in Fairway Hospitality Room

**Free Drawing for  
1 Year PathXL**  
*(retail value of \$100,000)*



Association of Pathology Chairs

*PREMIER Platinum Industry Partner*

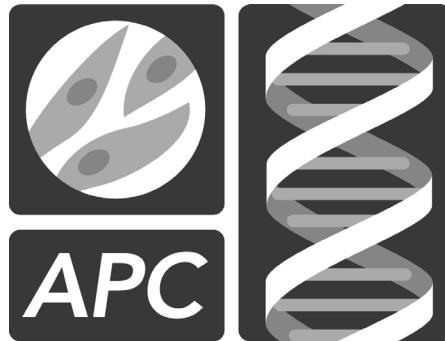
# Association of Pathology Chairs 2011 Annual Meeting

July 13-15, 2011

Monterey Plaza Hotel & Spa, Monterey, California

## Contents

Hotel Maps .....	2
APC Council Members .....	7
CME Information .....	8
Exhibit Schedule/List of Exhibitors .....	10
APC Meeting Program .....	13
PRODS Meeting Program .....	23
PDAS Meeting Program .....	33
UMEDS Meeting Program .....	41
List of Participants .....	49

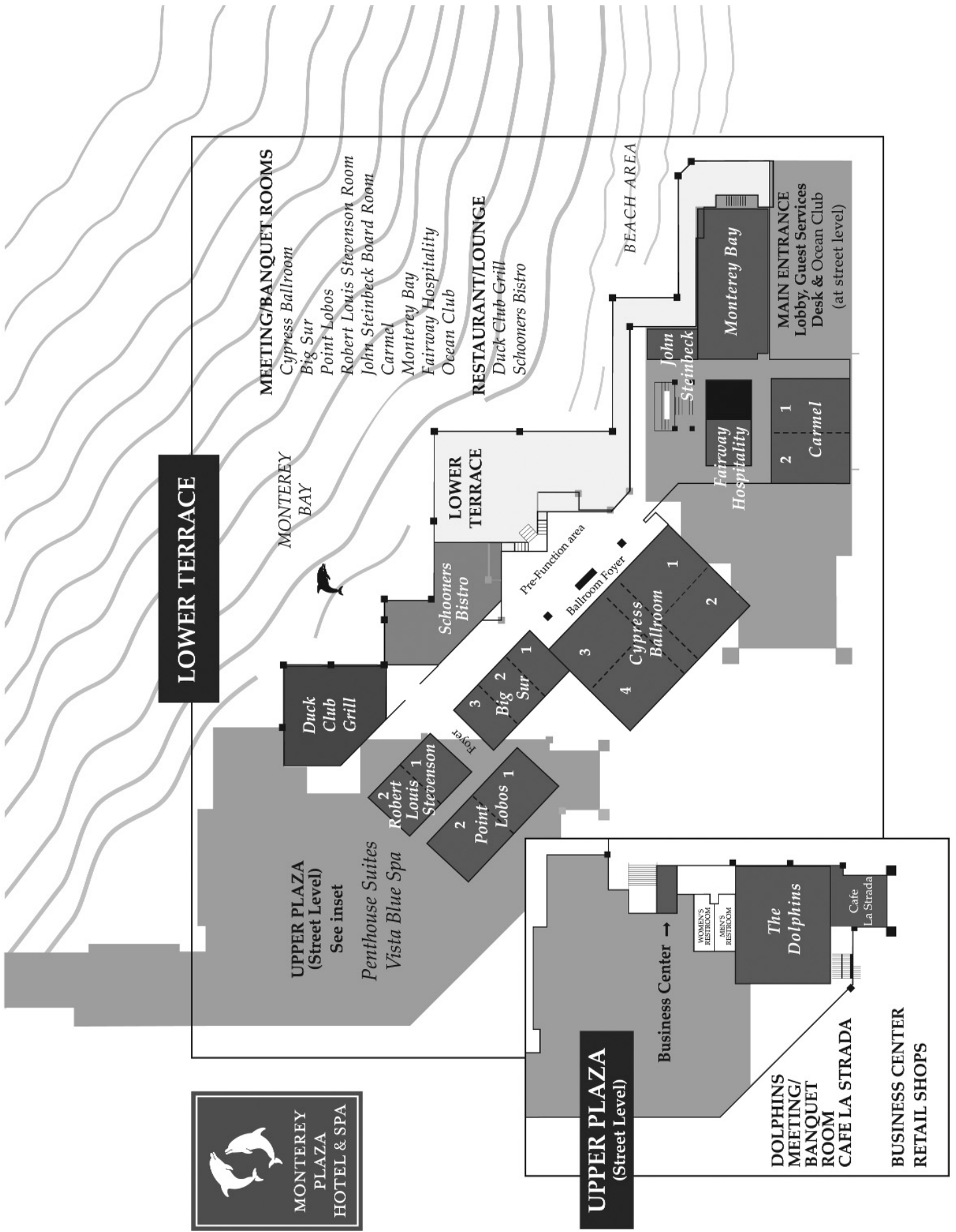


Association of Pathology Chairs

## Association of Pathology Chairs "Promoting Excellence in Academic Pathology"

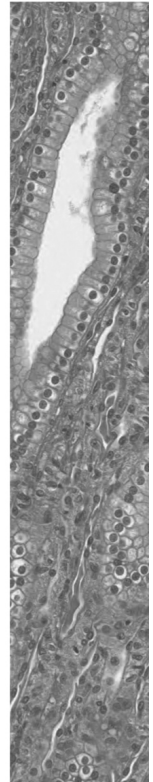
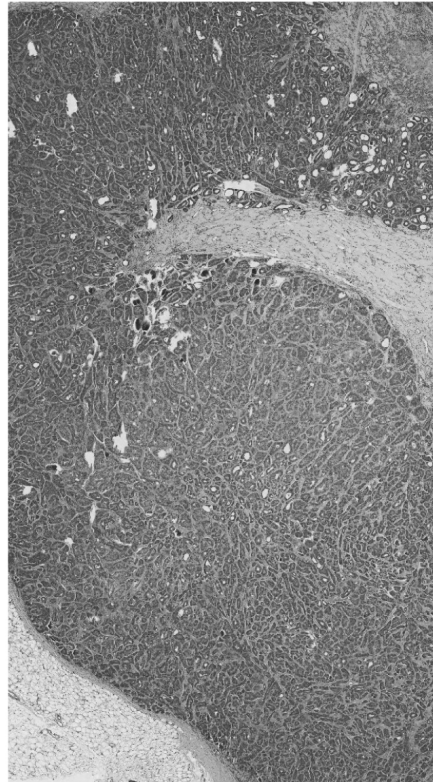
### APC Mission Statement

The Association of Pathology Chairs serves as a voice of academic pathology. The mission of the APC is to provide leadership and to advocate for the dynamic discipline of pathology. The APC provides education, training, information resources and networking opportunities for chairs, residency program directors, graduate student program directors and department administrators.





# Aperio is the proven leader in providing digital pathology solutions that improve Patient Care



## See the Benefits Today

With our ScanScope® systems and Spectrum™ software, you can create, access, analyze, and share digital pathology information in one consolidated environment.

Let us show you how digital pathology can help you reduce costs, increase workflow efficiency, and enhance quality assurance programs.

For more information about our solutions for digital pathology visit [www.aperio.com](http://www.aperio.com) or call us at 866-478-4111.



Contact Aperio  
to Learn More  
[www.aperio.com](http://www.aperio.com)



Tumor Boards • Intra-Operative Consultation • CAP/CLIA Compliance • Quality Assurance

# Discover Medical Billing Management designed for Lab and Pathology



kellison & company

- improve your cash flow
- reduce your administrative costs
- enhance your profitability through efficient billing management

medical billing management



(216) 464-5160 • (888) 694-6300 • [www.kellison.com](http://www.kellison.com)

# THIS



# OR THIS?



The choice is yours. Visit the Omnyx Booth to see a new standard in digital pathology: Integrated Digital Pathology



A GE Healthcare and UPMC Venture

[www.omnyx.com](http://www.omnyx.com)

---

Omnyx is a Platinum Sponsor of  
the Association of Pathology Chairs  
Annual Meeting

---

Omnyx products are for research use only. Not for use in diagnostic procedures.



SAVE THE  
DATE!

ASSOCIATION OF  
PATHOLOGY  
CHAIRS

APC 2012 ANNUAL  
MEETING

MONTEREY, CALIFORNIA  
JULY 11-13, 2012

[WWW.APCPRODS.ORG](http://WWW.APCPRODS.ORG)









**Association of Pathology Chairs 2011 Annual Meeting**

July 13-15, 2011

Monterey Plaza Hotel & Spa, Monterey, California

**CME Organizing Committee/Council 2011 Annual Meeting:**

**PRESIDENT**

Peter Jensen, MD  
University of Utah School of Medicine

**PRESIDENT-ELECT**

Ann Thor, MD  
University of Colorado at Denver HSC

**PAST PRESIDENT**

J. Charles Jennette, MD  
University of North Carolina - Chapel Hill

**SECRETARY-TREASURER**

Tristram Parslow, MD, PhD  
Emory University Hospital

**COUNCILOR-AT-LARGE**

Donald Karcher, MD  
George Washington University Medical Center

**CHAIR, Undergraduate Medical Education Committee**

Michael Cohen, MD  
University of Iowa College of Medicine

**CHAIR, Graduate Medical Education Committee**

J. Allan Tucker, MD  
University of South Alabama

**CHAIR, Research Committee**

Brian Smith, MD  
Yale University

**CHAIR, Practice & Management Committee**

Gregory Threatte, MD  
SUNY Upstate Medical University

**CHAIR, Advocacy Committee**

Daniel Remick, MD  
Boston University

## Association of Pathology Chairs 2011 Annual Meeting

July 13-15, 2011

Monterey Plaza Hotel & Spa, Monterey, California

### Continuing Medical Education (CME) Information



American Society for  
Clinical Pathology



Association of  
Pathology Chairs

**CME Accreditation Statement:** This activity (“APC 2011 Annual Meeting”) has been planned and implemented in accordance with the Essential Areas and policies of the Accreditation Council for Continuing Medical Education (ACCME) through the joint sponsorship of the American Society for Clinical Pathology (ASCP) and the Association of Pathology Chairs (APC). ASCP is accredited by the ACCME to provide continuing medical education for physicians.

The ASCP designates this “live” educational activity (“APC 2011 Annual Meeting”) for a maximum of 19.75 *AMA PRA Category 1 Credit(s)*<sup>™</sup>. Physicians should only claim credit commensurate with the extent of their participation in the activity.

CME applications are available online ([www.apcprods.org](http://www.apcprods.org)) beginning **July 13, 2011**. Should you have questions, please contact the APC Office (301-634-7880; email [apc@asip.org](mailto:apc@asip.org)).

**Meeting Objective/Target Audience:** The APC 2011 Annual Meeting will focus on issues and challenges related to the ability of academic and hospital departments of pathology and laboratory medicine to provide clinical service, teaching, and training and to provide a forum for the exchange of research by scientists and investigators. Academic departments of pathology and laboratory medicine are facing significant pressures which adversely impact their ability to carry out their missions of teaching, clinical service, and research. This meeting focuses on undergraduate (medical school), graduate (residency and fellowship), and lifelong pathology education, as well as the development of educational programs and curricula for training of medical students, residents, fellows, and senior pathologists, and on mechanisms to provide quality clinical service to patients. At the completion of this activity, participants should be able to: 1) apply new methods and approaches being used by departments of pathology and laboratory medicine to accomplish their clinical service and teaching and training missions; 2) describe the Accreditation Council for Graduate Medical Education (ACGME) regulations governing graduate medical education and the accreditation of training programs; and 3) utilize information and data that lead to improvements in the delivery of pathology clinical and teaching services with the goal of enabling constructive interactions between pathologists and other health care practitioners.

The target audience is professionals (MD, DO, PhD) and others who serve as the academic, medical, scientific, and administrative leaders of departments of pathology and laboratory medicine in the United States and Canada.

**Disclosure of Financial Relationships and Resolution of Conflicts of Interest:** In order to ensure balance, independence, objectivity and scientific rigor in all its educational activities, and in accordance with ACCME Standards, the ASCP requires all individuals in a position to influence and/or control the content of ASCP CME activities to disclose to the ASCP and subsequently to learners whether they do or do not have any relevant financial relationships with proprietary entities producing health care goods or services that are discussed in CME activities. Faculty are asked to use generic names in any discussion of therapeutic options, to base patient care recommendations on scientific evidence and to base information regarding commercial products/services on scientific methods generally accepted by the medical community. All ASCP CME activities are evaluated by participants for the presence of any commercial bias and this input is used for subsequent CME planning decisions. The primary purpose of this activity is educational and the comments, opinions and/or recommendations expressed by the faculty or authors are their own and not those of ASCP.



## Association of Pathology Chairs 2011 Annual Meeting

July 13-15, 2011

Monterey Plaza Hotel & Spa, Monterey, California

None of the organizers (as listed in the APC Program) of this educational activity disclosed a relevant financial relationship.

The following presenters have indicated relationships that have been reviewed and conflicts of interest resolved. If a presenter is not listed, then he/she had no relationship to disclose.

### Invited Speaker Disclosures:

#### Joe W. Gray, PhD, Oregon Health Sciences University; Lawrence Berkeley National Laboratory

Advisory Board Member: New Leaf Venture Partners  
KromaTiD

Grant/Research Support: GSK  
Millenium  
Pfizer

### PLEASE NOTE:

Please refer to the APC Meeting Evaluation and CME Application Workbook for a consolidated list of sessions that are eligible for *AMA PRA Category 1 Credit(s)*<sup>™</sup>. APC, PRODS and UMEDS sessions are eligible for *AMA PRA Category 1 Credit(s)*<sup>™</sup> except where noted in the meeting program. PDAS and CAMS sessions are not eligible for *AMA PRA Category 1 Credit(s)*<sup>™</sup>. Visiting exhibits is not an approved continuing medical education activity. Most meals are not approved for continuing medical education credit; however, some special breakfasts and lunches that have educational content are eligible for Continuing Medical Education credit as noted in your APC Meeting Evaluation and CME Application Workbook. The meeting program states which events are not a Continuing Medical Education activity.

### ***ONLINE CME Application and Meeting Evaluation***

CME Applications will be submitted ONLINE. If you have not registered for CME by the end of the meeting, you will have an opportunity to register afterwards. Deadline for submission of CME Applications is September 15, 2011.

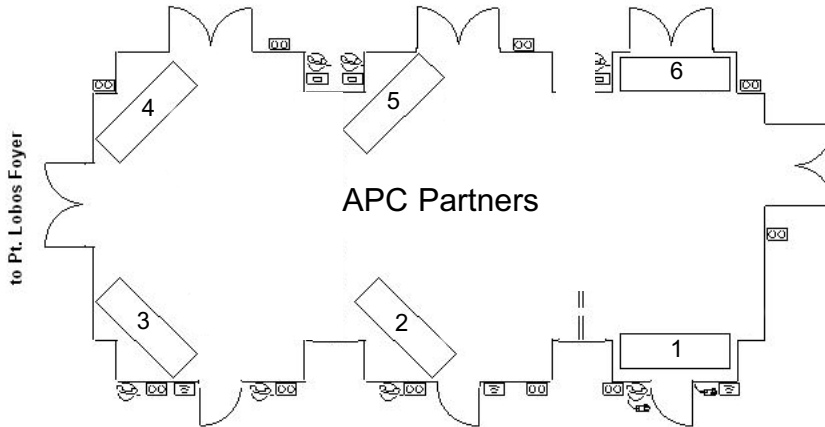
If you are not applying for CME, we still value your comments. Please submit your Meeting Evaluation ONLINE.

Please use the Meeting Evaluation and CME Application Workbook to keep track of your attendance and comments to facilitate your online submission. You will receive an email with a link to the ONLINE CME Application / Meeting Evaluation website after the meeting.

**APC 2011 Annual Meeting & Exhibits**  
**Exhibit Hall, Monterey Plaza Hotel and Spa**  
**Big Sur and Robert Lewis Stevenson Rooms, Lower Terrace**

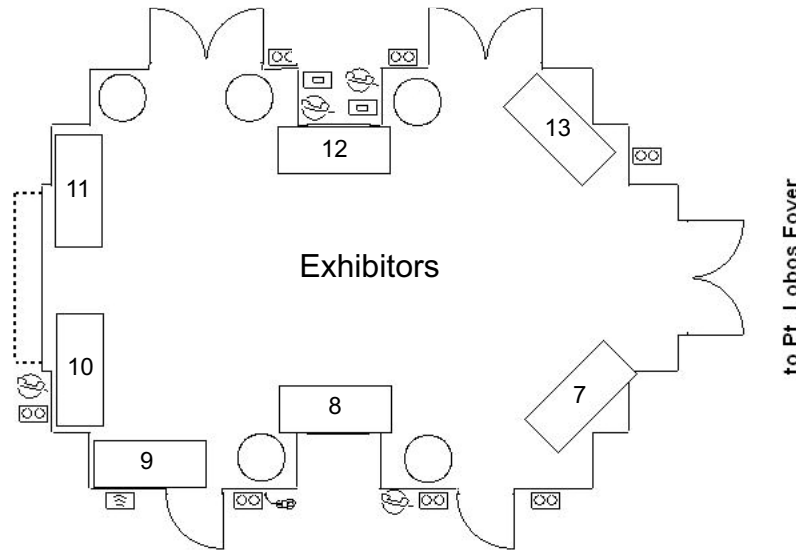
**Big Sur Room**

Marble Hallway (Entrance)



**Robert Lewis Stevenson Room**

Marble Hallway (Entrance)



**PREMIER Platinum Partners**

DigiPath, Inc. 1  
 American Society for Clinical Pathology 6

**Platinum Partners**

Kellison & Company 2  
 College of American Pathologists 3  
 Aperio 4  
 Omnyx, LLC. 5

**Exhibitors**

Cortex Medical Management Systems, Inc. 7  
 Voicebrook, Inc. 8  
 Lippincott William & Wilkins 9  
 ARUP Laboratories 10  
 NovoPath, Inc. 11  
 American Pathology Foundation 12  
 McKesson 13

**Please view the hotel map on page 2 for a complete overview of the meeting venue.**

## Association of Pathology Chairs 2011 Annual Meeting

July 13-15, 2011

Monterey Plaza Hotel & Spa, Monterey, California

### Exhibit Schedule

#### (Big Sur and Robert Louis Stevenson Rooms, Lower Terrace)

**Wednesday, July 13, 2011**

7:00 am – 5:00 pm

**Thursday, July 14, 2011**

7:00 am – 2:30 pm

**Friday, July 15, 2011**

7:00 am – 3:30 pm

#### PREMIER Platinum Partner Descriptions

##### **DigiPath, Inc. (Booth # 1)**

DigiPath, Inc. provides the next generation of affordable, innovative, and reliable digital pathology solutions. DigiPath's advisors bring over 60 years combined expertise in pioneering digital pathology, implementing over 500 installations at community pathology practices, hospitals, academic medical centers, reference laboratories, biopharma organizations, and life science research institutions worldwide.

[www.digipath.biz](http://www.digipath.biz)

##### **American Society for Clinical Pathology (Booth # 6)**

ASCP is pleased to present 1) results of the American Board of Pathology--ASCP Resident In-Service Examination Correlation Study, 2) a demonstration at the ASCP booth of ASCP's Pathologist Recertification Self-Assessment Examination (PRISE), and 3) an address by ASCP Executive Vice President E. Blair Holladay, PhD, SCT(ASCP)<sup>CM</sup>, "The Intersection of the Pathologist and the Clinician: The Role of Pathology in the Medical Home."

[www.ascp.org](http://www.ascp.org)

#### Platinum Partner Descriptions

##### **Aperio (Booth # 4)**

Aperio is the leading provider of digital pathology solutions. Our affordable and complete product portfolio improves patient care by enhancing quality assurance, delivering more efficient workflows, facilitating access to new and more targeted therapies, and improving pathologists' skills via lifelong education. Our comprehensive product line features our ScanScope<sup>®</sup> scanners, Spectrum<sup>™</sup> image management (PACS) software, SecondSlide<sup>®</sup> slide sharing service for pathology, and image analysis tools and services.

[www.aperio.com](http://www.aperio.com)

##### **College of American Pathologists (Booth # 3)**

With nearly 18,000 members, the CAP is the world's largest association composed exclusively of pathologists and is widely considered the leader in laboratory quality assurance and learning. The CAP's Residents Forum is now the largest gathering of pathology residents in the US and internationally. The College is leading a campaign to transform the specialty. More information is at [cap.org/transformation](http://cap.org/transformation).

[www.cap.org](http://www.cap.org)

##### **Kellison & Company (Booth # 2)**

Since 1976, the principals of Kellison & Company have specialized in providing comprehensive revenue cycle management services to Pathology practices including outreach, hospital-based AP practices, molecular labs and clinical professional component practices. Kellison's goal is to help improve cash flow, reduce administrative costs and enhance patient satisfaction. The company provides credentialing services, turning around denials and reporting options to help you monitor your current financial status as well as to predict future trends.

[www.kellison.com](http://www.kellison.com)

##### **Omnyx, Inc. (Booth # 5)**

The Omnyx offers the first and only Enterprise Digital Pathology solution to digitize the pathologist's routine workflow process along with case preparation and quality control in the lab. Omnyx addresses the scale, speed, reliability and workflow requirements for everyday clinical usage, enabling high-throughput pathology departments to go digital and benefit from improved efficiencies, quality and access to pathologists.

[www.omnyx.com](http://www.omnyx.com)

## Association of Pathology Chairs 2011 Annual Meeting

July 13-15, 2011

Monterey Plaza Hotel & Spa, Monterey, California

### Exhibitor Descriptions

#### **American Pathology Foundation (Booth # 12)**

The American Pathology Foundation (APF) is a professional society devoted to the business of pathology. Founded in 1959, the Foundation focuses on providing quality educational programs and practice management resources for members to help them stay current with scientific, legislative, and marketplace developments affecting the practice of pathology. APF membership is inclusive of pathologists, practice managers, pathology residents and academic programs.

[www.apfconnect.org](http://www.apfconnect.org)

#### **ARUP Laboratories (Booth # 10)**

As a leading reference laboratory, ARUP does not compete with its clients for physician office business, choosing instead to support clients' existing test menus by offering highly complex tests and accompanying consultative support. ARUP is uniquely positioned to help clients expand their outreach efforts, address total cost-of-care, and improve net income.

[www.aruplab.com](http://www.aruplab.com)

#### **Cortex Medical Management Systems, Inc. (Booth # 7)**

Experience Speed, Savings and Simplicity by having one consolidated multi-clinician, multi-case, multi-visit, single patient, pathology medical record. Add the optional RCM+ Medical Billing module to save time, money and energy.

[www.cortexmed.com](http://www.cortexmed.com)

#### **Lippincott Williams & Wilkins (Booth # 9)**

Stop by and browse our extensive selection of pathology resources for teaching, learning, and reference--including the widely acclaimed *Rubin's Pathology, Sixth Edition*, and its unique suite of ancillaries featuring the all-new *Rubin's Pathology Flash Cards*. We look forward to talking with you!

[www.lww.com](http://www.lww.com)

#### **McKesson (Booth # 13)**

Keep your practice healthy so your patients stay healthy too. Built with cloud computing technology, McKesson Practice Complete combines a certified electronic medical record, with a fully integrated practice management and billing solution – all for one predictable monthly fee. With Practice Management Complete, you can meet meaningful use requirements without a high up-front investment while collecting more of what you earn.

[www.mckesson.com](http://www.mckesson.com)

#### **NovoPath, Inc. (Booth # 11)**

Utilized by hospitals, physician groups, and regional reference laboratories; NovoPath™'s AP LIS tailors you workflow. NovoPath™'s easy-to-use, cost affordable, LIS offers modules for Molecular, FISH, Cytogenetics, and Flow. The Outreach Module enables delivery of combined reports via Web, Fax, Email, and HL7 Interfaces. NovoPath™'s CytoTouch, LEAN Process Improvement, and Voice Dictation Modules will help streamline workflow and improve patient safety.

[www.novopath.com](http://www.novopath.com)

#### **Voicebrook, Inc. (Booth # 8)**

Voicebrook is the leading provider of integrated speech recognition and digital dictation solutions for Pathology. Our VoiceOver® software integrates directly with all major Anatomic Pathology and Digital Imaging software and has been widely deployed throughout North America. Voicebrook's software ensures the highest levels of success with speech recognition, while providing the flexibility for users to choose between front-end speech recognition and digital dictation workflows.

[www.voicebrook.com](http://www.voicebrook.com)







# Association of Pathology Chairs 2011 Annual Meeting

July 13-15, 2011

Monterey Plaza Hotel & Spa, Monterey, California

## APC PROGRAM

### Tuesday, July 12, 2011

**3:00 pm - 6:00 pm**                      **Registration**  
The Ocean Club, Upper Plaza

### Wednesday, July 13, 2011

#### GENERAL INFORMATION:

**7:00 am - 5:00 pm**                      **Registration**  
Cypress Ballroom Foyer, Lower Terrace

**7:00 am - 5:00 pm**                      **Exhibit Hours**  
Big Sur & Robert Louis Stevenson Rooms, Lower Terrace

#### PROGRAM INFORMATION:

**7:00 am - 8:00 am**                      **Breakfast**  
*[This is not a Continuing Medical Education activity.]*  
Big Sur & Robert Louis Stevenson Rooms, Lower Terrace

**8:00 am - 10:00 am**                      **APC/PRODS Cooperative Programming**  
Cypress Ballroom, Lower Terrace

8:00 am - 8:05 am                      Introduction  
*J. Allan Tucker, MD, University of South Alabama*

8:05 am - 8:45 am                      Milestones in Resident Education: Overview  
*Thomas Nasca, MD, MACP, Accreditation Council for Graduate Medical Education*

8:45 am - 8:55 am                      Milestones (Program Directors' Perspective)  
*Suzanne Powell, MD, The Methodist Hospital System*

8:55 am - 9:45 am                      Transformation Case for Change: Learnings and Implications  
*Thomas Malone, MBA, College of American Pathologists;*  
*Thomas Wheeler, MD, Baylor College of Medicine*

9:45 am - 10:00 am                      Q/A with Panel  
*Moderated by J. Allan Tucker, MD, University of South Alabama*

**10:00 am - 10:30 am**                      **Break, Visit the Exhibits**  
*[This is not a Continuing Medical Education activity.]*  
Big Sur & Robert Louis Stevenson Rooms, Lower Terrace

## Association of Pathology Chairs 2011 Annual Meeting

July 13-15, 2011

Monterey Plaza Hotel & Spa, Monterey, California

- 10:30 am - 12:15 pm**                    **APC/UMEDS Cooperative Programming**  
Cypress Ballroom, Lower Terrace
- 10:30 am - 10:35 am    Introduction  
*Michael Cohen, MD, University of Iowa College of Medicine*
- 10:35 am - 11:00 am    NBME/USMLE Update  
*Peter Anderson, DVM, PhD, University of Alabama at Birmingham*
- 11:00 am - 11:30 am    Pathology Curriculum Survey Report  
*Charles Hitchcock, MD, PhD, The Ohio State University*
- 11:30 am - 12:00 pm    Laboratory Medicine Curriculum Survey Report  
*Brian Smith, MD, Yale University School of Medicine*
- 12:00 pm - 12:15 pm    Q/A with Panel  
*Moderated by Michael Cohen, MD, University of Iowa College of Medicine*
- 12:15 pm - 1:30 pm**                    **Lunch – Leadership Forum: The Value Proposition for Pathology**  
*[This is not a Continuing Medical Education activity.]*  
Cypress Ballroom, Lower Terrace
- 1:30 pm - 4:00 pm**                    **APC/PDAS Cooperative Programming**  
Cypress Ballroom, Lower Terrace
- 1:30 pm - 1:35 pm        Introduction  
*Gregory Threatte, MD, SUNY Upstate Medical University*
- 1:35 pm - 2:15 pm        Accountable Care Organizations: Assessing Pathology's Role  
*W. Stephen Black-Schaffer, MD, Massachusetts General Hospital*
- 2:15 pm - 3:00 pm        How to Measure Productivity Effectively in Academic Pathology  
*Dennis Padgett, MBA, CPA, FHFMA, DLPadgett Enterprises Inc.*
- 3:00 pm - 3:30 pm        Case Study in Benchmarking  
*Douglas Anthony, MD, PhD, University of Missouri-Columbia*
- 3:30 pm - 4:00 pm        Q/A with Panel  
*Moderated by Gregory Threatte, MD, SUNY Upstate Medical University*
- 4:00 pm - 5:00 pm**                    **Break/Breakshops**  
*[This is not a Continuing Medical Education activity.]*
- Breakshop: Digital Pathology for Improved Patient Care**  
*Sponsored by Aperio*  
Carmel 2, Lower Terrace



## Association of Pathology Chairs 2011 Annual Meeting

July 13-15, 2011

Monterey Plaza Hotel & Spa, Monterey, California

### **Breakshop: Choosing a Great Outsourced Billing Partner**

*Sponsored by Kellison & Company*

Carmel 1, Lower Terrace

### **Breakshop : College of American Pathologists**

*Sponsored by College of American Pathologists*

Point Lobos 1, Lower Terrace

**5:00 pm - 6:00 pm**

### **Opening Reception**

Sponsored by DigiPath, Inc. (APC PREMIER Platinum Industry Partner)

*[This is not a Continuing Medical Education activity.]*

Terrace, Upper Plaza

**6:00 pm - 8:30 pm**

### **Dinner/Award Presentations**

Partial Sponsorship by American Society for Clinical Pathology  
(APC PREMIER Platinum Association Partner)

*[This is not a Continuing Medical Education activity.]*

Cypress Ballroom & Monterey Bay, Lower Terrace

6:30 pm - 6:45 pm

UME Award Presentation by Carolyn Cambor (Chair of UMEDS)  
*Peter Anderson, DVM, PhD, University of Alabama at Birmingham*

6:45 pm - 7:00 pm

UME Award Presentation by Carolyn Cambor (Chair of UMEDS)  
*Byron Crawford, MD, Tulane University School of Medicine*

7:00 pm - 7:15 pm

GME Award Presentation by Suzanne Powell (Chair of PRODS)  
*C. Bruce Alexander, MD, University of Alabama at Birmingham*

7:15 pm - 7:30 pm

DSA Award Presentation by Mary Ann Sens & George Michalopoulos  
*Ronald Weinstein, MD, University of Arizona Health Sciences Center*

## **Thursday, July 14, 2011**

### **GENERAL INFORMATION:**

**7:00 am - 5:00 pm**

### **Registration**

Cypress Ballroom Foyer, Lower Terrace

**7:00 am - 2:30 pm**

### **Exhibit Hours**

Big Sur & Robert Louis Stevenson Rooms, Lower Terrace

### **PROGRAM INFORMATION:**

**7:00 am - 8:00 am**

### **Breakfast**

*[This is not a Continuing Medical Education activity.]*

Big Sur & Robert Louis Stevenson Rooms, Lower Terrace

## Association of Pathology Chairs 2011 Annual Meeting

July 13-15, 2011

Monterey Plaza Hotel & Spa, Monterey, California

- 7:15 am - 8:00 am**                      **Workshop Leader Orientation**  
*[This is not a Continuing Medical Education activity.]*  
Ann Thor, MD, University of Colorado at Denver  
Point Lobos 1, Lower Terrace
- 8:00 am - 10:00 am**                      **The Central Role of Pathology in Personalized Medicine**  
Cypress Ballroom, Lower Terrace
- 8:00 am - 8:05 am                      Introduction to Session  
Samuel Santoro, MD, PhD, Vanderbilt University School of Medicine
- 8:05 am - 8:25 am                      Molecular Technologies for Personalized Medicine: The Present and Future  
Karl V. Voelkerding, MD, ARUP Laboratories
- 8:25 am - 8:45 am                      Informatics Developments Enable Genomics and Personalized Medicine  
Mia Levy, MD, PhD, Vanderbilt University
- 8:45 am - 9:05 am                      Graduate Education in Personalized Medicine  
Jeffrey Saffitz, MD, PhD, Beth Israel Deaconess Medical Center
- 9:05 am - 9:25 am                      Undergraduate Medical Education in Personalized Medicine  
Vinay Kumar, MBBS, MD, FRCPath, University of Chicago School of Medicine
- 9:25 am - 9:40 am                      Anecdotes of Success in Personalized Medicine: Proteomics and Metabolomics of Cancer  
Michael Roehrl, MD, PhD, Boston Medical Center
- 9:40 am - 9:55 am                      Anecdotes of Success in Personalized Medicine: Pharmacogenomics  
Karen Weck, MD, PhD, University of North Carolina at Chapel Hill School of Medicine
- 9:55 am - 10:00 am                      Summary of Session (Part I)  
Samuel Santoro, MD, PhD, Vanderbilt University School of Medicine
- 10:00 am - 10:30 am**                      **Break, Visit the Exhibits**  
*[This is not a Continuing Medical Education activity.]*  
Big Sur & Robert Louis Stevenson Rooms, Lower Terrace
- 10:30 am - 12:00 pm**                      **The Central Role of Pathology in Personalized Medicine**  
Cypress Ballroom, Lower Terrace
- 10:30 am - 10:45 am                      Anecdotes of Success in Personalized Medicine: Genotyping of New Cancers  
Jon Morrow, MD, PhD, Yale University School of Medicine



## Association of Pathology Chairs 2011 Annual Meeting

July 13-15, 2011

Monterey Plaza Hotel & Spa, Monterey, California

- 1:00 pm - 2:00 pm      GME Workshop  
**Transformation as it Impacts Resident Training**  
*Robert Hoffman, MD, PhD, Vanderbilt University School of Medicine;*  
*Thomas Wheeler, MD, Baylor College of Medicine*  
Cypress Ballroom, Lower Terrace
- 1:00 pm - 2:00 pm      GME Workshop  
**Graduated Responsibility**  
*Gayle Winters, MD, Brigham & Women's Hospital; Barbara Ducatman,*  
*MD, Robert C. Byrd Health Sciences Center/West Virginia University*  
John Steinbeck, Lower Terrace
- 1:00 pm - 2:00 pm      GME Workshop  
**Curricula in Personalized Medicine and Genomics (GME)**  
*Leslie Bruch, MD, University of Iowa College of Medicine; Jeffrey Saffitz,*  
*MD, PhD, Beth Israel Deaconess Medical Center*  
Cypress Ballroom, Lower Terrace
- 1:00 pm - 2:00 pm      UME / Research Workshop  
**Curricula in Personalized Medicine and Genomics (UME)**  
*Vinay Kumar, MBBS, MD, FRCPath, University of Chicago School of*  
*Medicine; Andrea Ferreira-Gonzalez, PhD, Virginia Commonwealth*  
*University*  
Point Lobos 2, Lower Terrace
- 1:00 pm - 2:00 pm      GME / Practice & Management Workshop  
**Educating Residents in Core Concepts of Financial Management of**  
**Pathology Practice**  
*Gary Brown, MBA, University of Colorado, Denver; Michael Talbert, MD,*  
*University of Oklahoma Health Sciences Center*  
Carmel 1, Lower Terrace
- 1:00 pm - 2:00 pm      Practice & Management / Advocacy Workshop  
**Health Innovation Zones & Accountable Care Organizations**  
*W. Stephen Black-Schaffer, MD, Massachusetts General Hospital; James*  
*Crawford, MD, PhD, North Shore-Long Island Jewish Health System*  
Monterey Bay, Lower Terrace
- 1:00 pm - 2:00 pm      UME Workshop  
**GRIFE and UMEDS: What is Our Future?**  
*Michael Cohen, MD, University of Iowa College of Medicine; Carole*  
*Pillinger, MD, University of South Carolina School of Medicine*  
Point Lobos 1, Lower Terrace

## Association of Pathology Chairs 2011 Annual Meeting

July 13-15, 2011

Monterey Plaza Hotel & Spa, Monterey, California

- 1:00 pm - 2:00 pm Practice & Management / Research Workshop  
**Impediments to Clinical or Research Application of New Technologies**  
*Debra Leonard, MD, PhD, Weill Cornell Medical College; Gregory Threatte, MD, SUNY Upstate Medical University*  
Carmel 2, Lower Terrace
- 1:00 pm - 2:00 pm Practice & Management / Research / Advocacy Workshop  
**NIH Budget and Strategy**  
*Daniel Remick, MD, Boston University School of Medicine; Ann Thor, MD, University of Colorado at Denver*  
TBD (Please check with the APC Staff at the Registration Desk)
- 1:00 pm - 2:00 pm GME / Research Workshop  
**Physician-Scientist Track**  
*Betsy Bennett, MD, PhD, The American Board of Pathology; Brian Smith, MD, Yale University School of Medicine*  
The Ocean Club, Upper Plaza
- 1:00 pm - 2:00 pm Practice & Management / Advocacy Workshop  
**Health Information Technology (HIT) in Pathology**  
*Donald Karcher, MD, George Washington University Medical Center; John Sinard, MD, PhD, Yale University School of Medicine; Joseph Rondinelli, MBA, University of Medicine and Dentistry of New Jersey - New Jersey Medical School*  
Monterey Bay, Lower Terrace
- 2:00 pm - 2:30 pm Break, Visit the Exhibits**  
*[This is not a Continuing Medical Education activity.]*  
Big Sur & Robert Louis Stevenson Rooms, Lower Terrace
- 2:30 pm - 4:30 pm Committee Meetings**  
*(Concurrent Meetings)*
- 2:30 pm - 4:30 pm Graduate Medical Education Committee Meeting  
*J. Allan Tucker, MD, University of South Alabama*  
The Ocean Club, Upper Plaza
- 2:30 pm - 4:30 pm Undergraduate Medical Education Committee Meeting  
*Michael Cohen, MD, University of Iowa College of Medicine*  
John Steinbeck, Lower Terrace
- 2:30 pm - 4:30 pm Research Committee Meeting  
*Brian Smith, MD, Yale University School of Medicine*  
Carmel 1, Lower Terrace
- 2:30 pm - 4:30 pm Practice & Management Committee Meeting  
*Gregory Threatte, MD, SUNY Upstate Medical University*  
Monterey Bay, Lower Terrace

## Association of Pathology Chairs 2011 Annual Meeting

July 13-15, 2011

Monterey Plaza Hotel & Spa, Monterey, California

**4:30 pm - 5:30 pm**

### **Breakshops**

*[This is not a Continuing Medical Education activity.]*

#### **Breakshop: A Networking Event and Status Report on the Lab Management Curriculum Development Project**

*Sponsored by American Society for Clinical Pathology*

The Dolphins/Terrace, Upper Plaza

#### **Breakshop: Making Integrated Digital Pathology a Reality for Academic Medical Centers**

*Sponsored by Omnyx, Inc.*

Point Lobos 1, Lower Terrace

**5:00 pm - 6:00 pm**

### **Committee Meetings**

*(Concurrent Meetings)*

5:00 pm - 6:00 pm

HIT Subcommittee Meeting

*Donald Karcher, MD, George Washington University Medical Center*

John Steinbeck, Lower Terrace

5:00 pm - 6:00 pm

Molecular Subcommittee Meeting

*David Wilkinson, MD, PhD, Virginia Commonwealth University*

The Ocean Club, Upper Plaza

### **Friday, July 15, 2011**

#### **GENERAL INFORMATION:**

**7:00 am - 5:00 pm**

#### **Registration**

Cypress Ballroom Foyer, Lower Terrace

**7:00 am - 3:30 pm**

#### **Exhibit Hours**

Big Sur & Robert Louis Stevenson Rooms, Lower Terrace

#### **PROGRAM INFORMATION:**

**7:00 am - 8:00 am**

#### **Breakfast**

*[This is not a Continuing Medical Education activity.]*

Big Sur & Robert Louis Stevenson Rooms, Lower Terrace

**8:00 am - 10:00 am**

#### **Research: Emerging Areas of Science in Personalized Medicine**

Cypress Ballroom, Lower Terrace

8:00 am - 8:05 am

Introduction - Cancer: Personalized Medicine and Technologies at the Forefront

*Brian Smith, MD, Yale University School of Medicine*

## Association of Pathology Chairs 2011 Annual Meeting

July 13-15, 2011

Monterey Plaza Hotel & Spa, Monterey, California

- 8:05 am - 8:30 am      Systems Biology of Glioblastomas  
*Carlos Moreno, PhD, Emory University*
- 8:30 am - 8:55 am      Towards Systems Pathology: Proteomics in Cancer and Autoimmunity  
*Michael Roehrl, MD, PhD, Boston Medical Center*
- 8:55 am - 9:00 am      Introduction – Further Frontiers  
*Brian Smith, MD, Yale University School of Medicine*
- 9:00 am - 9:30 am      Full-Genome Analysis of Microbial Pathogens: Any Value in this Niche?  
*James Musser, MD, PhD, The Methodist Hospital Research Institute*
- 9:30 am - 10:00 am      The Role of a Translational Research Laboratory: What is Coming in  
Proteomics and Translational Research  
*Joe W. Gray, PhD, Oregon Health Sciences University; Lawrence Berkeley  
National Laboratory*
- 10:00 am - 10:30 am      Break, Visit the Exhibits**  
*[This is not a Continuing Medical Education activity.]*  
Big Sur & Robert Louis Stevenson Rooms, Lower Terrace
- 10:30 am - 12:30 pm      Advocacy Programming**  
Cypress Ballroom, Lower Terrace
- 10:30 am - 11:00 am      Advocacy Keynote - Federal Updates and Perspectives Impacting  
Pathology: From Healthcare Reform and Health Information  
Technology to Translational Research and Personalized Medicine  
*Dora Hughes, MD, MPH, FACP, Office of the Secretary, U.S. Department  
of Health and Human Services*
- 11:00 am - 11:15 am      Q/A with Keynote Speaker  
*Moderated by Daniel Remick, MD, Boston University School of Medicine*
- 11:15 am - 11:20 am      ABP Liaison Report / Response to Keynote  
*Betsy Bennett, MD, PhD, The American Board of Pathology*
- 11:20 am - 11:25 am      ACLPS Liaison Report / Response to Keynote  
*Jonathan Miller, MD, PhD, University of Chicago*
- 11:25 am - 11:30 am      ADASP Liaison Report / Response to Keynote  
*Jeffrey Myers, MD, University of Michigan*
- 11:30 am - 11:35 am      AMA Section Council Liaison Report / Response to Keynote  
*Rebecca Johnson, MD, Berkshire Health Systems*



## Association of Pathology Chairs 2011 Annual Meeting

July 13-15, 2011

Monterey Plaza Hotel & Spa, Monterey, California

- 11:35 am - 11:40 am    ASCP Liaison Report / Response to Keynote  
*John Tomaszewski, MD, University of Pennsylvania*
- 11:40 am - 11:45 am    ASIP Liaison Report / Response to Keynote  
*James Musser, MD, PhD, The Methodist Hospital Research Institute*
- 11:45 am - 11:50 am    CAP Liaison Report / Response to Keynote  
*Stephen N. Bauer, MD, Mercy San Juan Hospital Laboratory*
- 11:50 am - 11:55 am    USCAP Liaison Report / Response to Keynote  
*Linda Ferrell, MD, University of California, San Francisco*
- 11:55 am - 12:30 pm    Panel Discussion  
*Moderated by Daniel Remick, MD, Boston University School of Medicine*
- 12:30 pm - 2:00 pm                    Lunch / APC Business Meeting**  
*[This is not a Continuing Medical Education activity.]*  
*Presided by Peter Jensen, MD, University of Utah School of Medicine*  
Monterey Bay, Lower Terrace
- 2:00 pm - 3:00 pm                    Committee Meeting**
- 2:00 pm - 3:00 pm                    Advocacy Committee Meeting  
*Daniel Remick, MD, Boston University School of Medicine*  
The Ocean Club, Upper Plaza
- 3:00 pm - 3:30 pm                    Break, Visit the Exhibits**  
*[This is not a Continuing Medical Education activity.]*  
Big Sur & Robert Louis Stevenson Rooms, Lower Terrace
- 3:30 pm                                    Official Meeting Closes**





# Association of Pathology Chairs 2011 Annual Meeting

July 13-15, 2011

Monterey Plaza Hotel & Spa, Monterey, California

## PRODS PROGRAM

### Tuesday, July 12, 2011

**3:00 pm - 6:00 pm**                      **Registration**  
The Ocean Club, Upper Plaza

### Wednesday, July 13, 2011

#### GENERAL INFORMATION:

**7:00 am - 5:00 pm**                      **Registration**  
Cypress Ballroom Foyer, Lower Terrace

**7:00 am - 5:00 pm**                      **Exhibit Hours**  
Big Sur & Robert Louis Stevenson Rooms, Lower Terrace

#### PROGRAM INFORMATION:

**7:00 am - 8:00 am**                      **Breakfast**  
*[This is not a Continuing Medical Education activity.]*  
Big Sur & Robert Louis Stevenson Rooms, Lower Terrace

**8:00 am - 10:00 am**                      **APC/PRODS Cooperative Programming**  
Cypress Ballroom, Lower Terrace

8:00 am - 8:05 am                      Introduction  
*J. Allan Tucker, MD, University of South Alabama*

8:05 am - 8:45 am                      Milestones in Resident Education: Overview  
*Thomas Nasca, MD, MACP, Accreditation Council for Graduate Medical Education*

8:45 am - 8:55 am                      Milestones (Program Directors' Perspective)  
*Suzanne Powell, MD, The Methodist Hospital System*

8:55 am - 9:45 am                      Transformation Case for Change: Learnings and Implications  
*Thomas Malone, MBA, College of American Pathologists;*  
*Thomas Wheeler, MD, Baylor College of Medicine*

9:45 am - 10:00 am                      Q/A with Panel  
*Moderated by J. Allan Tucker, MD, University of South Alabama*

**10:00 am - 10:30 am**                      **Break, Visit the Exhibits**  
*[This is not a Continuing Medical Education activity.]*  
Big Sur & Robert Louis Stevenson Rooms, Lower Terrace

## Association of Pathology Chairs 2011 Annual Meeting

July 13-15, 2011

Monterey Plaza Hotel & Spa, Monterey, California

<b>10:30 am – 12:00 pm</b>	<b>Welcome to PRODS Meeting / New PRODS Orientation</b> The Dolphins, Upper Plaza
10:30 am - 10:40 am	Welcome to PRODS Meeting / Meeting Orientation <i>Suzanne Powell, MD, The Methodist Hospital System</i>
10:40 am - 11:10 am	General PRODS Update and New PRODS Orientation <i>Suzanne Powell, MD, The Methodist Hospital System</i>
11:10 am - 11:40 am	Orientation to the American Board of Pathology <i>Betsy Bennett, MD, PhD, The American Board of Pathology</i>
11:40 am - 12:00 pm	Recent Program Closings: What They Have in Common and What This Means for You <i>C. Bruce Alexander, MD, University of Alabama at Birmingham</i>
<b>12:00 pm - 1:30 pm</b>	<b>Lunch / PRODS Committee Meetings</b> <i>[This is not a Continuing Medical Education activity.]</i> The Dolphins, Upper Plaza
12:00 pm - 1:30 pm	Ethics, Professionalism & Communication Committee Meeting
12:00 pm - 1:30 pm	Workforce, Employment & Training Committee Meeting
12:00 pm - 1:30 pm	Outcomes & Assessment Committee Meeting (focus on Milestones and Portfolios)
12:00 pm - 1:30 pm	Educational Innovation Committee Meeting
<b>1:30 pm - 4:00 pm</b>	<b>PRODS Plenary Session I</b> The Dolphins, Upper Plaza
1:30 pm - 2:00 pm	American Board of Pathology Report <i>Betsy Bennett, MD, PhD, The American Board of Pathology</i>
2:00 pm - 2:05 pm	American Society for Clinical Pathology - Rise Exam Report <i>Henry Rinder, MD, Yale-New Haven Medical Center</i>
2:05 pm - 2:30 pm	The Intersection of the Pathologist and the Clinician: The Role of Pathology in the Medical Home <i>E. Blair Holladay, PhD, SCT (ASCP)CM, American Society for Clinical Pathology</i>
2:30 pm - 3:00 pm	Accreditation Council for Graduate Medical Education Report <i>Linda Thorsen, MA, Accreditation Council for Graduate Medical Education</i>

## Association of Pathology Chairs 2011 Annual Meeting

July 13-15, 2011

Monterey Plaza Hotel & Spa, Monterey, California

- 3:00 pm - 3:30 pm College of American Pathologists Graduate Medical Education  
*Michael Talbert, MD, University of Oklahoma Health Sciences Center*
- 3:30 pm - 4:00 pm Training Residents in Genomics (TRIG) Joint Committee Report  
*Richard Haspel, MD, PhD, Beth Israel Deaconess Medical Center*
- 4:00 pm - 5:00 pm** **Breakshops**  
*[This is not a Continuing Medical Education activity.]*
- Breakshop: Digital Pathology for Improved Patient Care**  
*Sponsored by Aperio*  
Carmel 2, Lower Terrace
- Breakshop: Choosing a Great Outsourced Billing Partner**  
*Sponsored by Kellison & Company*  
Carmel 1, Lower Terrace
- Breakshop : College of American Pathologists**  
*Sponsored by College of American Pathologists*  
Point Lobos 1, Lower Terrace
- 5:00 pm - 6:00 pm** **Opening Reception**  
Sponsored by DigiPath, Inc. (APC PREMIER Platinum Industry Partner)  
*[This is not a Continuing Medical Education activity.]*  
Terrace, Upper Plaza
- 6:00 pm - 8:30 pm** **Dinner/Award Presentations**  
Partial Sponsorship by American Society for Clinical Pathology  
(APC PREMIER Platinum Association Partner)  
*[This is not a Continuing Medical Education activity.]*  
Cypress Ballroom & Monterey Bay, Lower Terrace
- 6:30 pm - 6:45 pm UME Award Presentation by Carolyn Cambor (Chair of UMEDS)  
*Peter Anderson, DVM, PhD, University of Alabama at Birmingham*
- 6:45 pm - 7:00 pm UME Award Presentation by Carolyn Cambor (Chair of UMEDS)  
*Byron Crawford, MD, Tulane University School of Medicine*
- 7:00 pm - 7:15 pm GME Award Presentation by Suzanne Powell (Chair of PRODS)  
*C. Bruce Alexander, MD, University of Alabama at Birmingham*
- 7:15 pm - 7:30 pm DSA Award Presentation by Mary Ann Sens & George Michalopoulos  
*Ronald Weinstein, MD, University of Arizona Health Sciences Center*

## Association of Pathology Chairs 2011 Annual Meeting

July 13-15, 2011

Monterey Plaza Hotel & Spa, Monterey, California

### Thursday, July 14, 2011

#### GENERAL INFORMATION:

7:00 am - 5:00 pm

#### Registration

Cypress Ballroom Foyer, Lower Terrace

7:00 am - 2:30 pm

#### Exhibit Hours

Big Sur & Robert Louis Stevenson Rooms, Lower Terrace

#### PROGRAM INFORMATION:

7:00 am - 8:00 am

#### Breakfast

*[This is not a Continuing Medical Education activity.]*

Big Sur & Robert Louis Stevenson Rooms, Lower Terrace

7:15 am - 8:00 am

#### Workshop Leader Orientation

*[This is not a Continuing Medical Education activity.]*

*Ann Thor, MD, University of Colorado at Denver*

Point Lobos 1, Lower Terrace

8:00 am - 10:00 am

#### The Central Role of Pathology in Personalized Medicine

Cypress Ballroom, Lower Terrace

8:00 am - 8:05 am

Introduction to Session

*Samuel Santoro, MD, PhD, Vanderbilt University School of Medicine*

8:05 am - 8:25 am

Molecular Technologies for Personalized Medicine: The Present and Future

*Karl V. Voelkerding, MD, ARUP Laboratories*

8:25 am - 8:45 am

Informatics Developments Enable Genomics and Personalized Medicine

*Mia Levy, MD, PhD, Vanderbilt University*

8:45 am - 9:05 am

Graduate Education in Personalized Medicine

*Jeffrey Saffitz, MD, PhD, Beth Israel Deaconess Medical Center*

9:05 am - 9:25 am

Undergraduate Medical Education in Personalized Medicine

*Vinay Kumar, MBBS MD FRCPATH, University of Chicago School of Medicine*

9:25 am - 9:40 am

Anecdotes of Success in Personalized Medicine: Proteomics and Metabolomics of Cancer

*Michael Roehrl, MD, PhD, Boston Medical Center*

## Association of Pathology Chairs 2011 Annual Meeting

July 13-15, 2011

Monterey Plaza Hotel & Spa, Monterey, California

- 9:40 am - 9:55 am      **Anecdotes of Success in Personalized Medicine: Pharmacogenomics**  
*Karen Weck, MD, PhD, University of North Carolina at Chapel Hill School of Medicine*
- 9:55 am - 10:00 am      **Summary of Session (Part I)**  
*Samuel Santoro, MD, PhD, Vanderbilt University School of Medicine*
- 10:00 am - 10:30 am**      **Break, Visit the Exhibits**  
*[This is not a Continuing Medical Education activity.]*  
Big Sur & Robert Louis Stevenson Rooms, Lower Terrace
- 10:30 am - 12:15 pm**      **Milestones Plenary Session**  
The Dolphins, Upper Plaza
- 10:30 am - 11:15 am      **Milestone Project Overview and Update**  
*Steven Nestler, PhD, Accreditation Council for Graduate Medical Education*
- 11:15 am - 11:45 am      **Case Study in Milestone Implementation: Ophthalmology**  
*Andrew Lee, MD, The Methodist Hospital System*
- 11:45 am - 12:15 pm      **Case Study in Milestone Implementation: Urology**  
*Michael Coburn, MD, Baylor College of Medicine*
- 12:15 pm - 1:00 pm**      **Lunch / Panel Discussion**  
*Moderated by Suzanne Powell, MD, The Methodist Hospital System*  
The Dolphins, Upper Plaza
- 1:00 pm - 2:00 pm**      **Workshop (GME) – Choose One**
- 1:00 pm - 2:00 pm      **Program Closings: What We Can Learn & What We Can Do**  
*C. Bruce Alexander, MD, University of Alabama at Birmingham; Peter Kragel, MD, East Carolina University Brody School of Medicine*  
Donatello, Upper Plaza (across the street)
- 1:00 pm - 2:00 pm      **Milestones in Resident Education (Group A)**  
*Wesley Naritoku, MD, PhD, Keck School of Medicine at the University of Southern California; Steven Nestler, PhD, Accreditation Council for Graduate Medical Education*  
The Dolphins, Upper Plaza
- 1:00 pm - 2:00 pm      **Milestones in Resident Education (Group B)**  
*Suzanne Powell, MD, The Methodist Hospital System; Dani Zander, MD, Pennsylvania State College of Medicine*  
The Dolphins, Upper Plaza



## Association of Pathology Chairs 2011 Annual Meeting

July 13-15, 2011

Monterey Plaza Hotel & Spa, Monterey, California

- 1:00 pm - 2:00 pm      **Transformation as it Impacts Resident Training**  
*Robert Hoffman, MD, PhD, Vanderbilt University School of Medicine;*  
*Thomas Wheeler, MD, Baylor College of Medicine*  
Cypress Ballroom, Lower Terrace
- 1:00 pm - 2:00 pm      **Graduated Responsibility**  
*Gayle Winters, MD, Brigham & Women's Hospital;*  
*Barbara Ducatman, MD, Robert C. Byrd Health Sciences Center/West*  
*Virginia University*  
John Steinbeck, Lower Terrace
- 1:00 pm - 2:00 pm      **Curricula in Personalized Medicine and Genomics**  
*Leslie Bruch, MD, University of Iowa College of Medicine;*  
*Jeffrey Saffitz, MD, PhD, Beth Israel Deaconess Medical Center*  
Cypress Ballroom, Lower Terrace
- 1:00 pm - 2:00 pm      **Educating Residents in Core Concepts of Financial Management of Pathology Practice**  
*Gary Brown, MBA, University of Colorado, Denver; Michael Talbert, MD,*  
*University of Oklahoma Health Sciences Center*  
Carmel 1, Lower Terrace
- 1:00 pm - 2:00 pm      **Physician-Scientist Track**  
*Betsy Bennett, MD, PhD, The American Board of Pathology;*  
*Brian Smith, MD, Yale University School of Medicine*  
The Ocean Club, Upper Plaza
- 2:00 pm - 2:30 pm**      **Break, Visit the Exhibits**  
*[This is not a Continuing Medical Education activity.]*  
Big Sur & Robert Louis Stevenson Rooms, Lower Terrace
- 2:30 pm - 3:30 pm**      **PRODS Plenary Session II**  
The Dolphins, Upper Plaza
- 2:30 pm - 3:30 pm      Duty Hours Update  
*Suzanne Powell, MD, The Methodist Hospital System; Wesley Naritoku,*  
*MD, PhD, Keck School of Medicine at the University of Southern*  
*California; Mark Brissette, MD, Denver VA Medical Center*
- 3:30 pm - 4:30 pm**      **PRODS Business Meeting**  
*[This is not a Continuing Medical Education activity.]*  
*Suzanne Powell, MD, The Methodist Hospital System*  
The Dolphins, Upper Plaza

## Association of Pathology Chairs 2011 Annual Meeting

July 13-15, 2011

Monterey Plaza Hotel & Spa, Monterey, California

**4:30 pm - 5:30 pm**

### **Breakshops**

*[This is not a Continuing Medical Education activity.]*

#### **Breakshop: A Networking Event and Status Report on the Lab Management Curriculum Development Project**

*Sponsored by American Society for Clinical Pathology*

The Dolphins/Terrace, Upper Plaza

#### **Breakshop: Making Integrated Digital Pathology a Reality for Academic Medical Centers**

*Sponsored by Omnyx, Inc.*

Point Lobos 1, Lower Terrace

**5:00 pm - 6:00 pm**

### **Committee Meeting**

5:00 pm - 6:00 pm

HIT Subcommittee Meeting

*Donald Karcher, MD, George Washington University Medical Center*

John Steinbeck, Lower Terrace

5:00 pm - 6:00 pm

Molecular Subcommittee Meeting

*David Wilkinson, MD, PhD, Virginia Commonwealth University*

The Ocean Club, Upper Plaza

## **Friday, July 15, 2011**

### **GENERAL INFORMATION:**

**7:00 am - 5:00 pm**

#### **Registration**

Cypress Ballroom Foyer, Lower Terrace

**7:00 am - 3:30 pm**

#### **Exhibit Hours**

Big Sur & Robert Louis Stevenson Rooms, Lower Terrace

### **PROGRAM INFORMATION:**

**7:00 am - 8:00 am**

#### **Breakfast**

*[This is not a Continuing Medical Education activity.]*

Big Sur & Robert Louis Stevenson Rooms, Lower Terrace

**8:00 am - 10:00 am**

#### **PRODS Companion Society Reports**

The Dolphins, Upper Plaza

8:00 am - 8:30 am

College of American Pathologists Resident Forum Report

*Jerad Gardner, MD, Emory University, Chair, CAP Residents Forum*

8:30 am - 9:00 am

American Society for Clinical Pathology Resident Council Report

*Chris Cogbill, MD, Chair-Elect, ASCP Resident Council*

## Association of Pathology Chairs 2011 Annual Meeting

July 13-15, 2011

Monterey Plaza Hotel & Spa, Monterey, California

- 9:00 am - 9:30 am United States and Canadian Academy of Pathology Report  
*Linda Ferrell, MD, University of California, San Francisco*
- 9:30 am - 10:00 am American Board of Pathology Recap  
*Betsy Bennett, MD, PhD, The American Board of Pathology*
- 10:00 am - 10:30 am Break, Visit the Exhibits**  
*[This is not a Continuing Medical Education activity.]*  
Big Sur & Robert Louis Stevenson Rooms, Lower Terrace
- 10:30 am - 12:30 pm Advocacy Programming**  
Cypress Ballroom, Lower Terrace
- 10:30 am - 11:00 am Advocacy Keynote - Federal Updates and Perspectives Impacting Pathology: From Healthcare Reform and Health Information Technology to Translational Research and Personalized Medicine  
*Dora Hughes, MD, MPH, FACP, Office of the Secretary, U.S. Department of Health and Human Services*
- 11:00 am - 11:15 am Q/A with Keynote Speaker  
*Moderated by Daniel Remick, MD, Boston University School of Medicine*
- 11:15 am - 11:20 am ABP Liaison Report / Response to Keynote  
*Betsy Bennett, MD, PhD, The American Board of Pathology*
- 11:20 am - 11:25 am ACLPS Liaison Report / Response to Keynote  
*Jonathan Miller, MD, PhD, University of Chicago*
- 11:25 am - 11:30 am ADASP Liaison Report / Response to Keynote  
*Jeffrey Myers, MD, University of Michigan*
- 11:30 am - 11:35 am AMA Section Council Liaison Report / Response to Keynote  
*Rebecca Johnson, MD, Berkshire Health Systems*
- 11:35 am - 11:40 am ASCP Liaison Report / Response to Keynote  
*John Tomaszewski, MD, University of Pennsylvania*
- 11:40 am - 11:45 am ASIP Liaison Report / Response to Keynote  
*James Musser, MD, PhD, The Methodist Hospital Research Institute*
- 11:45 am - 11:50 am CAP Liaison Report / Response to Keynote  
*Stephen N. Bauer, MD, Mercy San Juan Hospital Laboratory*
- 11:50 am - 11:55 am USCAP Liaison Report / Response to Keynote  
*Linda Ferrell, MD, University of California, San Francisco*

## Association of Pathology Chairs 2011 Annual Meeting

July 13-15, 2011

Monterey Plaza Hotel & Spa, Monterey, California

- 11:55 am - 12:30 pm    **Panel Discussion**  
*Moderated by Daniel Remick, MD, Boston University School of Medicine*
- 12:30 pm - 2:00 pm**            **Lunch / Farewell to Colleagues**  
*[This is not a Continuing Medical Education activity.]*  
Terrace, Upper Plaza (Rain Location: The Dolphins, Upper Plaza)
- 2:00 pm - 3:00 pm**            **Committee Meeting**
- 2:00 pm - 3:00 pm            Advocacy Committee Meeting  
*Daniel Remick, MD, Boston University School of Medicine*  
The Ocean Club, Upper Plaza
- 3:00 pm - 3:30 pm**            **Break, Visit the Exhibits**  
*[This is not a Continuing Medical Education activity.]*  
Big Sur & Robert Louis Stevenson Rooms, Lower Terrace
- 3:30 pm**                        **Official Meeting Closes**

**Association of Pathology Chairs 2011 Annual Meeting**

July 13-15, 2011

Monterey Plaza Hotel & Spa, Monterey, California

**NOTES:**





# Association of Pathology Chairs 2011 Annual Meeting

July 13-15, 2011

Monterey Plaza Hotel & Spa, Monterey, California

## PDAS PROGRAM

### Tuesday, July 12, 2011

**3:00 pm - 6:00 pm**                      **Registration**  
The Ocean Club, Upper Plaza

### Wednesday, July 13, 2011

#### GENERAL INFORMATION:

**7:00 am - 5:00 pm**                      **Registration**  
Cypress Ballroom Foyer, Lower Terrace

**7:00 am - 5:00 pm**                      **Exhibit Hours**  
Big Sur & Robert Louis Stevenson Rooms, Lower Terrace

#### PROGRAM INFORMATION:

*[PDAS Programming is not recognized for Continuing Medical Education credit.]*

**7:00 am - 8:00 am**                      **Breakfast**  
*[This is not a Continuing Medical Education activity.]*  
Big Sur & Robert Louis Stevenson Rooms, Lower Terrace

**8:00 am - 12:00 pm**                      **Back to Basics - Mini Boot Camp/New PDAS Orientation**  
Carmel 2, Lower Terrace

8:00 am - 8:05 am                      Introduction to PDAS Program  
*Thomas Dilts, MT(ASCP) MBPA, Virginia Commonwealth University*

8:05 am - 8:50 am                      Finance - Revenue and Expenses  
*Martha Miers, Vanderbilt University School of Medicine*

8:50 am - 9:30 am                      Operations  
*David Wooster, Yale University*

9:30 am - 10:00 am                      Information Technology  
*Barbara Prentiss, University of Washington School of Medicine*

**10:00 am - 10:30 am**                      **Break, Visit the Exhibits**  
Big Sur & Robert Louis Stevenson Rooms, Lower Terrace

10:30 am - 11:00 am                      Compliance  
*Marjel Whitmore, MPA, Creighton University Medical Center*





## Association of Pathology Chairs 2011 Annual Meeting

July 13-15, 2011

Monterey Plaza Hotel & Spa, Monterey, California

<b>6:00 pm - 8:30 pm</b>	<b>Dinner/Award Presentations</b> Partial Sponsorship by American Society for Clinical Pathology (APC PREMIER Platinum Association Partner) <i>[This is not a Continuing Medical Education activity.]</i> Cypress Ballroom & Monterey Bay, Lower Terrace
6:30 pm - 6:45 pm	UME Award Presentation by Carolyn Cambor (Chair of UMEDS) <i>Peter Anderson, DVM, PhD, University of Alabama at Birmingham</i>
6:45 pm - 7:00 pm	UME Award Presentation by Carolyn Cambor (Chair of UMEDS) <i>Byron Crawford, MD, Tulane University School of Medicine</i>
7:00 pm - 7:15 pm	GME Award Presentation by Suzanne Powell (Chair of PRODS) <i>C. Bruce Alexander, MD, University of Alabama at Birmingham</i>
7:15 pm - 7:30 pm	DSA Award Presentation by Mary Ann Sens & George Michalopoulos <i>Ronald Weinstein, MD, University of Arizona Health Sciences Center</i>

### Thursday, July 14, 2011

#### GENERAL INFORMATION:

<b>7:00 am - 5:00 pm</b>	<b>Registration</b> Cypress Ballroom Foyer, Lower Terrace
<b>7:00 am - 2:30 pm</b>	<b>Exhibit Hours</b> Big Sur & Robert Louis Stevenson Rooms, Lower Terrace

#### PROGRAM INFORMATION:

*[PDAS Programming is not recognized for Continuing Medical Education credit.]*

<b>7:00 am - 8:00 am</b>	<b>Breakfast</b> <i>[This is not a Continuing Medical Education activity.]</i> Big Sur & Robert Louis Stevenson Rooms, Lower Terrace
<b>7:15 am - 8:00 am</b>	<b>Workshop Leader Orientation</b> <i>[This is not a Continuing Medical Education activity.]</i> <i>Ann Thor, MD, University of Colorado at Denver</i> Point Lobos 1, Lower Terrace
<b>8:00 am - 10:00 am</b>	<b>PDAS Plenary Session I</b> Carmel 2, Lower Terrace
8:00 am - 8:05 am	Introduction to Session <i>Thomas Dilts, MT(ASCP) MBPA, Virginia Commonwealth University</i>

## Association of Pathology Chairs 2011 Annual Meeting

July 13-15, 2011

Monterey Plaza Hotel & Spa, Monterey, California

- 8:05 am - 9:00 am PDAS Keynote - Transformation of Pathology  
*Thomas Malone, MBA, College of American Pathologist*
- 9:00 am - 10:00 am Presentation on the Health Care Reform Bill  
*Sheryl Garland, MHA, Virginia Commonwealth University*
- 10:00 am - 10:30 am Break, Visit the Exhibits**  
*[This is not a Continuing Medical Education activity.]*  
Big Sur & Robert Louis Stevenson Rooms, Lower Terrace
- 10:30 am - 12:00 pm The Central Role of Pathology in Personalized Medicine**  
Carmel 2, Lower Terrace
- 10:30 am - 10:45 am Anecdotes of Success in Personalized Medicine: Genotyping of New Cancers  
*Jon Morrow, MD, PhD, Yale University School of Medicine*
- 10:45 am - 11:00 am Anecdotes of Success in Personalized Medicine: Advances in Molecular Diagnostics  
*Andrea Ferreira-Gonzalez, PhD, Virginia Commonwealth University*
- 11:00 am - 11:30 am Regulatory and Financial Issues  
*Jane Pine Wood, JD, McDonald Hopkins LLC*
- 11:30 am - 11:35 am National Cooperative Models  
*Samuel Santoro, MD, PhD, Vanderbilt University School of Medicine*
- 11:35 am - 12:00 pm Panel Discussion (Q&A): How can our departments and organizations facilitate personalized medicine integration into our profession? For resource intensive and non-intensive departments, what is required for accessibility? How can pathology be at the center, rather than in the periphery of this shift?  
*Moderated by Samuel Santoro, MD, PhD, Vanderbilt University School of Medicine*
- 12:00 pm - 1:00 pm Lunch / PDAS Business Meeting**  
*Presided by Thomas Dilts, MT(ASCP) MBPA, Virginia Commonwealth University*  
Carmel 1, Lower Terrace
- 1:00 pm - 2:00 pm Workshop (P&M) – Choose One**
- 1:00 pm - 2:00 pm **Educating Residents in Core Concepts of Financial Management of Pathology Practice**  
*Gary Brown, MBA, University of Colorado, Denver; Michael Talbert, MD, University of Oklahoma Health Sciences Center*  
Carmel 1, Lower Terrace

## Association of Pathology Chairs 2011 Annual Meeting

July 13-15, 2011

Monterey Plaza Hotel & Spa, Monterey, California

- 1:00 pm - 2:00 pm     **Health Innovation Zones & Accountable Care Organizations**  
*W. Stephen Black-Schaffer, MD, Massachusetts General Hospital; James Crawford, MD, PhD, North Shore-Long Island Jewish Medical Center*  
Monterey Bay, Lower Terrace
- 1:00 pm - 2:00 pm     **Impediments to Clinical or Research Application of New Technologies**  
*Debra Leonard, MD, PhD, Weill Cornell Medical College; Gregory Threatte, MD, SUNY Upstate Medical University*  
Carmel 2, Lower Terrace
- 1:00 pm - 2:00 pm     **NIH Budget and Strategy**  
*Daniel Remick, MD, Boston University School of Medicine; Ann Thor, MD, University of Colorado at Denver*  
TBD (Please check with the APC Staff at the Registration Desk)
- 1:00 pm - 2:00 pm     **Health Information Technology (HIT) in Pathology**  
*Donald Karcher, MD, George Washington University Medical Center; John Sinard, MD, PhD, Yale University School of Medicine*  
*Joseph Rondinelli, MBA, University of Medicine and Dentistry of New Jersey - New Jersey Medical School*  
Monterey Bay, Lower Terrace
- 2:00 pm - 2:30 pm**     **Break, Visit the Exhibits**  
*[This is not a Continuing Medical Education activity.]*  
Big Sur & Robert Louis Stevenson Rooms, Lower Terrace
- 2:30 pm - 5:00 pm**     **PDAS Plenary Session II**  
Carmel 2, Lower Terrace
- 2:30 pm - 3:30 pm     ACO's and What They Mean for Pathology  
*W. Stephen Black-Schaffer, MD, Massachusetts General Hospital*
- 3:30 pm - 4:15 pm     Information Technology and Pathology  
*John Sinard, MD, PhD, Yale University School of Medicine*
- 4:15 pm - 5:00 pm     Panel Discussion: Administrators in a Changing Health Care Environment  
*W. Stephen Black-Schaffer, MD, Massachusetts General Hospital; Sheryl Garland, MHA, Virginia Commonwealth University; Nancy Risenhoover, University of New Mexico School of Medicine; Jane Pine Wood, JD, McDonald Hopkins LLC; Kelley Suskie, MHSA, University of Arkansas for Medical Sciences*
- 6:00 pm**     **Meet in Lobby for PDAS Group Dinner in Monterey (optional)**

## Association of Pathology Chairs 2011 Annual Meeting

July 13-15, 2011

Monterey Plaza Hotel & Spa, Monterey, California

### Friday, July 15, 2011

#### GENERAL INFORMATION:

**7:00 am - 5:00 pm**

**Registration**

Cypress Ballroom Foyer, Lower Terrace

**7:00 am - 3:30 pm**

**Exhibit Hours**

Big Sur & Robert Louis Stevenson Rooms, Lower Terrace

#### PROGRAM INFORMATION:

*[PDAS Programming is not recognized for Continuing Medical Education credit.]*

**7:00 am - 8:00 am**

**Breakfast**

*[This is not a Continuing Medical Education activity.]*

Big Sur & Robert Louis Stevenson Rooms, Lower Terrace

**8:00 am - 12:00 pm**

**PDAS Plenary Session III**

Carmel 2, Lower Terrace

8:00 am - 8:05 am

Introduction to Session

*Thomas Dilts, MT(ASCP) MBPA, Virginia Commonwealth University*

8:05 am - 9:00 am

Molecular Pathology New Coding Scheme for 2012

*David Wilkinson, MD, PhD, Virginia Commonwealth University*

9:00 am - 10:00 am

Gatekeeping Send-Out Tests

*Joseph Rondinelli, MBA, University of Medicine and Dentistry of New Jersey - New Jersey Medical School*

**10:00 am - 10:30 am**

**Break, Visit the Exhibits**

*[This is not a Continuing Medical Education activity.]*

Big Sur & Robert Louis Stevenson Rooms, Lower Terrace

**10:30 am - 12:00 pm**

**PDAS Plenary Session III Continued...**

Carmel 2, Lower Terrace

10:30 am - 11:30 am

Personalized Medicine (from the PDAS perspective)

*Jane Pine Wood, JD, McDonald Hopkins LLC*

11:30 am - 12:00 pm

Summary Discussion / Closing Remarks

*Thomas Dilts, MT(ASCP) MBPA, Virginia Commonwealth University*

**12:00 pm - 2:00 pm**

**Lunch – Farewell to Colleagues**

Carmel 1, Lower Terrace



**Association of Pathology Chairs 2011 Annual Meeting**

July 13-15, 2011

Monterey Plaza Hotel & Spa, Monterey, California

**NOTES:**







# Association of Pathology Chairs 2011 Annual Meeting

July 13-15, 2011

Monterey Plaza Hotel & Spa, Monterey, California

## UMEDS PROGRAM

### Tuesday, July 12, 2011

**3:00 pm - 6:00 pm**                      **Registration**  
The Ocean Club, Upper Plaza

### Wednesday, July 13, 2011

#### GENERAL INFORMATION:

**7:00 am - 5:00 pm**                      **Registration**  
Cypress Ballroom Foyer, Lower Terrace

**7:00 am - 5:00 pm**                      **Exhibit Hours**  
Big Sur & Robert Louis Stevenson Rooms, Lower Terrace

#### PROGRAM INFORMATION:

**7:00 am - 8:00 am**                      **Breakfast**  
*[This is not a Continuing Medical Education activity.]*  
Big Sur & Robert Louis Stevenson Rooms, Lower Terrace

**7:30 am - 8:20 am**                      UMEDS Council Breakfast w/First-Time UMEDS Attendees  
*[This is not a Continuing Medical Education activity.]*  
Carolyn Cambor, MD, University of Pennsylvania School of Medicine  
Point Lobos 1, Lower Terrace

**8:20 am - 10:00 am**                      **UMEDS Plenary Session I**  
Point Lobos 2, Lower Terrace

8:20 am - 8:25 am                      Welcome to UMEDS Meeting  
Carolyn Cambor, MD, University of Pennsylvania School of Medicine

8:25 am - 8:30 am                      Introduction to Session  
Regina Gandour-Edwards, MD, University of California, Davis Health System

8:30 am - 10:00 am                      Medical Education in the 21st Century: Innovations in Curriculum and Support of the Teaching Faculty  
Molly Cooke, MD, University of California, San Francisco - The Haile T. Debas Academy of Medical Educators

**10:00 am - 10:30 am**                      **Break, Visit the Exhibits**  
*[This is not a Continuing Medical Education activity.]*  
Big Sur & Robert Louis Stevenson Rooms, Lower Terrace

## Association of Pathology Chairs 2011 Annual Meeting

July 13-15, 2011

Monterey Plaza Hotel & Spa, Monterey, California

- 10:30 am - 12:15 pm**      **APC/UMEDS Cooperative Programming**  
Cypress Ballroom, Lower Terrace
- 10:30 am - 10:35 am      Introduction  
*Michael Cohen, MD, University of Iowa College of Medicine*
- 10:35 am - 11:00 am      NBME/USMLE Update  
*Peter Anderson, DVM, PhD, University of Alabama at Birmingham*
- 11:00 am - 11:30 am      Pathology Curriculum Survey Report  
*Charles Hitchcock, MD, PhD, The Ohio State University*
- 11:30 am - 12:00 pm      Laboratory Medicine Curriculum Survey Report  
*Brian Smith, MD, Yale University School of Medicine*
- 12:00 pm - 12:15 pm      Q/A with Panel  
*Moderated by Michael Cohen, MD, University of Iowa College of Medicine*
- 12:15 pm - 2:00 pm**      **UMEDS Business Meeting**  
*[This is not a Continuing Medical Education activity.]*  
*Presided by Carolyn Cambor, MD, University of Pennsylvania School of Medicine*  
Point Lobos 2, Lower Terrace
- 2:00 pm - 4:00 pm**      **UMEDS Plenary Session II**  
Point Lobos 2, Lower Terrace
- 2:00 pm - 2:05 pm      Introduction to Session  
*Amy Lin, MD, University of Illinois at Chicago*
- 2:05 pm - 4:00 pm      Educational Research Tools: Survey Methods  
*Ilene Harris, PhD, University of Illinois at Chicago*
- 4:00 pm - 5:00 pm**      **Break/Breakshops**  
*[This is not a Continuing Medical Education activity.]*
- Breakshop: Digital Pathology for Improved Patient Care**  
*Sponsored by Aperio*  
Carmel 2, Lower Terrace
- Breakshop: Choosing a Great Outsourced Billing Partner**  
*Sponsored by Kellison & Company*  
Carmel 1, Lower Terrace

## Association of Pathology Chairs 2011 Annual Meeting

July 13-15, 2011

Monterey Plaza Hotel & Spa, Monterey, California

### **Breakshop : College of American Pathologists**

*Sponsored by College of American Pathologists*

Point Lobos 1, Lower Terrace

**5:00 pm - 6:00 pm**

### **Opening Reception**

Sponsored by DigiPath, Inc. (APC PREMIER Platinum Industry Partner)

*[This is not a Continuing Medical Education activity.]*

Terrace, Upper Plaza

**6:00 pm - 8:30 pm**

### **Dinner/Award Presentations**

Partial Sponsorship by American Society for Clinical Pathology

(APC PREMIER Platinum Association Partner)

*[This is not a Continuing Medical Education activity.]*

Cypress Ballroom & Monterey Bay, Lower Terrace

6:30 pm - 6:45 pm

UME Award Presentation by Carolyn Cambor (Chair of UMEDS)

*Peter Anderson, DVM, PhD, University of Alabama at Birmingham*

6:45 pm - 7:00 pm

UME Award Presentation by Carolyn Cambor (Chair of UMEDS)

*Byron Crawford, MD, Tulane University School of Medicine*

7:00 pm - 7:15 pm

GME Award Presentation by Suzanne Powell (Chair of PRODS)

*C. Bruce Alexander, MD, University of Alabama at Birmingham*

7:15 pm - 7:30 pm

DSA Award Presentation by Mary Ann Sens & George Michalopoulos

*Ronald Weinstein, MD, University of Arizona Health Sciences Center*

## **Thursday, July 14, 2011**

### **GENERAL INFORMATION:**

**7:00 am - 5:00 pm**

### **Registration**

Cypress Ballroom Foyer, Lower Terrace

**7:00 am - 2:30 pm**

### **Exhibit Hours**

Big Sur & Robert Louis Stevenson Rooms, Lower Terrace

### **PROGRAM INFORMATION:**

**7:00 am - 8:00 am**

### **Breakfast**

*[This is not a Continuing Medical Education activity.]*

Big Sur & Robert Louis Stevenson Rooms, Lower Terrace

**7:15 am - 8:00 am**

### **Workshop Leader Orientation**

*[This is not a Continuing Medical Education activity.]*

*Ann Thor, MD, University of Colorado at Denver*

Point Lobos 1, Lower Terrace

## Association of Pathology Chairs 2011 Annual Meeting

July 13-15, 2011

Monterey Plaza Hotel & Spa, Monterey, California

<b>8:00 am - 10:00 am</b>	<b>The Central Role of Pathology in Personalized Medicine</b> Cypress Ballroom, Lower Terrace
8:00 am - 8:05 am	Introduction to Session <i>Samuel Santoro, MD, PhD, Vanderbilt University School of Medicine</i>
8:05 am - 8:25 am	Molecular Technologies for Personalized Medicine: The Present and Future <i>Karl V. Voelkerding, MD, ARUP Laboratories</i>
8:25 am - 8:45 am	Informatics Developments Enable Genomics and Personalized Medicine <i>Mia Levy, MD, PhD, Vanderbilt University</i>
8:45 am - 9:05 am	Graduate Education in Personalized Medicine <i>Jeffrey Saffitz, MD, PhD, Beth Israel Deaconess Medical Center</i>
9:05 am - 9:25 am	Undergraduate Medical Education in Personalized Medicine <i>Vinay Kumar, MBBS, MD, FRCPath, University of Chicago School of Medicine</i>
9:25 am - 9:40 am	Anecdotes of Success in Personalized Medicine: Proteomics and Metabolomics of Cancer <i>Michael Roehrl, MD, PhD, Boston Medical Center</i>
9:40 am - 9:55 am	Anecdotes of Success in Personalized Medicine: Pharmacogenomics <i>Karen Weck, MD, PhD, University of North Carolina at Chapel Hill School of Medicine</i>
9:55 am - 10:00 am	Summary of Session (Part I) <i>Samuel Santoro, MD, PhD, Vanderbilt University School of Medicine</i>
<b>10:00 am - 10:30 am</b>	<b>Break, Visit the Exhibits</b> <i>[This is not a Continuing Medical Education activity.]</i> Big Sur & Robert Louis Stevenson Rooms, Lower Terrace
<b>10:30 am - 1:00 pm</b>	<b>Milestones Plenary Session</b> The Dolphins, Upper Plaza
10:30 am - 11:15 am	Milestone Project Overview and Update <i>Steven Nestler, PhD, Accreditation Council for Graduate Medical Education</i>
11:15 am - 11:45 am	Case Study in Milestone Implementation: Ophthalmology <i>Andrew Lee, MD, The Methodist Hospital System</i>

## Association of Pathology Chairs 2011 Annual Meeting

July 13-15, 2011

Monterey Plaza Hotel & Spa, Monterey, California

- 11:45 am - 12:15 pm Case Study in Milestone Implementation: Urology  
*Michael Coburn, MD, Baylor College of Medicine*
- 12:15 pm - 1:00 pm Lunch / Panel Discussion**  
*Moderated by Suzanne Powell, MD, The Methodist Hospital System*  
The Dolphins, Upper Plaza
- 1:00 pm - 2:00 pm Workshop (UME) – Choose One**
- 1:00 pm - 2:00 pm **Curricula in Personalized Medicine and Genomics (UME)**  
*Vinay Kumar, MBBS, MD, FRCPath, University of Chicago School of Medicine; Andrea Ferreira-Gonzalez, PhD, Virginia Commonwealth University*  
Cypress Ballroom, Lower Terrace
- 1:00 pm - 2:00 pm **GRYPE and UMEDS: What is our Future?**  
*Michael Cohen, MD, University of Iowa College of Medicine; Carole Pillinger, MD, University of South Carolina School of Medicine*  
Point Lobos 1, Lower Terrace
- 2:00 pm - 2:30 pm Break, Visit the Exhibits**  
*[This is not a Continuing Medical Education activity.]*  
Big Sur & Robert Louis Stevenson Rooms, Lower Terrace
- 2:30 pm - 5:30 pm Course Directors Workshop - Part I**  
Point Lobos 2, Lower Terrace
- 2:30 pm - 2:45 pm Course Directors Workshop - Part I - Introduction  
*Charles Hitchcock, MD, PhD, The Ohio State University; Peter Anderson, DVM, PhD, University of Alabama at Birmingham*
- 2:45 pm - 3:30 pm Course Directors Workshop - Part I - Overview of Pathology Curricula in North America  
*Charles Hitchcock, MD, PhD, The Ohio State University; Peter Anderson, DVM, PhD, University of Alabama at Birmingham*
- 3:30 pm - 4:15 p.m. Course Directors Workshop - Part I - Today's Medical Students – Dealing with Millennials  
*Peter Anderson, DVM, PhD, University of Alabama at Birmingham*
- 4:15 pm - 4:30 pm Break (In Room)**  
*[This is not a Continuing Medical Education activity.]*
- 4:30 pm - 5:00 pm Course Directors Workshop - Part I - Today's Faculty  
*Michael Cohen, MD, University of Iowa College of Medicine*

## Association of Pathology Chairs 2011 Annual Meeting

July 13-15, 2011

Monterey Plaza Hotel & Spa, Monterey, California

5:00 pm - 5:30 pm Course Directors Workshop - Part I - Clerkships in Pathology  
*Margret Magid, MD, Mount Sinai School of Medicine*

### Friday, July 15, 2011

#### GENERAL INFORMATION:

7:00 am - 5:00 pm **Registration**  
Cypress Ballroom Foyer, Lower Terrace

7:00 am - 3:30 pm **Exhibit Hours**  
Big Sur & Robert Louis Stevenson Rooms, Lower Terrace

#### PROGRAM INFORMATION:

7:00 am - 8:00 am **Breakfast**  
*[This is not a Continuing Medical Education activity.]*  
Big Sur & Robert Louis Stevenson Rooms, Lower Terrace

8:00 am - 10:00 am **Research Programming: Emerging Areas of Science in Personalized Medicine**  
Point Lobos 2, Lower Terrace

8:00 am - 8:05 am Introduction - Cancer: Personalized Medicine and Technologies at the Forefront  
*Brian Smith, MD, Yale University School of Medicine*

8:05 am - 8:30 am Systems Biology of Glioblastomas  
*Carlos Moreno, PhD, Emory University*

8:30 am - 8:55 am Towards Systems Pathology: Proteomics in Cancer and Autoimmunity  
*Michael Roehrl, MD, PhD, Boston Medical Center*

8:55 am - 9:00 am Introduction – Further Frontiers  
*Brian Smith, MD, Yale University School of Medicine*

9:00 am - 9:30 am Full-Genome Analysis of Microbial Pathogens: Any Value in this Niche?  
*James Musser, MD, PhD, The Methodist Hospital Research Institute*

9:30 am - 10:00 am The Role of a Translational Research Laboratory: What is Coming in Proteomics and Translational Research?  
*Joe W. Gray, PhD, Oregon Health Sciences University; Lawrence Berkeley National Laboratory*

10:00 am - 10:30 am **Break, Visit the Exhibits**  
*[This is not a Continuing Medical Education activity.]*

## Association of Pathology Chairs 2011 Annual Meeting

July 13-15, 2011

Monterey Plaza Hotel & Spa, Monterey, California

Big Sur & Robert Louis Stevenson Rooms, Lower Terrace

**10:30 am - 12:30 pm**

### **Course Directors Workshop - Part II**

Point Lobos 2, Lower Terrace

10:30 am - 11:15 am

Course Directors Workshop - Part II - Learning Resources

*Charles Hitchcock, MD, PhD, The Ohio State University*

11:15 am - 12:00 pm

Course Directors Workshop - Part II - Testing

*Carolyn Cambor, MD, University of Pennsylvania School of Medicine*

12:00 pm - 12:30 pm

Course Directors Workshop - Part II - Objectives

*Darshana Shah, PhD, JCESOM at Marshall University*

**12:30 pm - 2:00 pm**

### **Lunch – Farewell to Colleagues**

*[This is not a Continuing Medical Education activity.]*

Point Lobos 1, Lower Terrace

**2:00 pm - 3:00 pm**

### **Committee Meeting**

2:00 pm - 3:00 pm

Advocacy Committee Meeting

*Daniel Remick, MD, Boston University School of Medicine*

The Ocean Club, Upper Plaza

**3:00 pm - 3:30 pm**

### **Break, Visit the Exhibits**

*[This is not a Continuing Medical Education activity.]*

Big Sur & Robert Louis Stevenson Rooms, Lower Terrace

**3:30 pm**

### **Official Meeting Closes**



**Association of Pathology Chairs 2011 Annual Meeting**

July 13-15, 2011

Monterey Plaza Hotel & Spa, Monterey, California

**NOTES:**





## Association of Pathology Chairs 2011 Annual Meeting

July 13-15, 2011

Monterey Plaza Hotel & Spa, Monterey, California

Abul K. Abbas  
(APC Chair)  
U California, San Francisco  
abul.abbas@ucsf.edu

Volkan Adsay  
(OTHER)  
Emory University Hospital  
nadsay@emory.edu

Seena Aisner  
(PRODS)  
UMDNJ-New Jersey School of Medicine  
aisnersc@umdnj.edu

C. Bruce Alexander  
(PRODS)  
U Alabama at Birmingham  
cba@uab.edu

Michael Allard  
(APC Chair)  
U British Columbia  
mike.allard@Pathology.ubc.ca

Robert C. Allen  
(APC Chair)  
Creighton University Medical Center  
robertallen@creighton.edu

Charles E. Alpers  
(APC Chair)  
U Washington Medical Center  
calp@uw.edu

Scott Anderson  
(PRODS)  
U Vermont College of Medicine  
scott.anderson@vtmednet.org

Peter G. Anderson  
(UMEDS)  
U Alabama at Birmingham  
pga@uab.edu

Jared Andrews  
(PRODS)  
Baylor U Medical Center, Dallas  
jared.andrews@amedd.army.mil

Douglas Anthony  
(APC Chair)  
U Missouri-Columbia  
anthonydc@health.missouri.edu

Gregory Archual  
(PDAS)  
Case University Hospitals of Cleveland  
greg.archual@uhhospitals.org

James B. Atkinson  
(UMEDS)  
Vanderbilt University  
james.atkinson@vanderbilt.edu

Marie Christine Aubry  
(PRODS)  
Mayo Clinic  
aubry.mariechristine@mayo.edu

John Baci  
(PDAS)  
Children's Hospital Boston /  
Harvard Medical School  
john.baci@childrens.harvard.edu

Cheryl F. Baker-Stasiak  
(PDAS)  
Robert C Byrd HSC /  
West Virginia University  
cstasiak@hsc.wvu.edu

Robert Baston  
(UMEDS)  
Texas Tech University  
kirk.baston@ttuhsc.edu

Nicholas Batalis  
(PRODS)  
Medical University of South Carolina  
batalini@musc.edu

Stephen N. Bauer  
(OTHER)  
Mercy San Juan Hospital Laboratory  
president@cap.org

Elaine Bearer  
(APC Chair)  
U New Mexico HSC  
ebearer@salud.unm.edu

Frederick Behm  
(APC Chair)  
U Illinois at Chicago  
fredbehm@uic.edu

Walter C. Bell  
(PRODS)  
U Alabama at Birmingham  
wbell@uab.edu

Betsy Bennett  
(OTHER)  
American Board of Pathology  
bdbennett@abpath.org

Cynthia Bevis  
(PDAS)  
Island Jewish Medical Center  
cbevis@nshs.edu

Achyut Bhattacharyya  
(APC Chair)  
U Arizona Hlth Sciences Center  
abhatac@email.arizona.edu

Steven A. Bigler  
(APC Chair)  
U Mississippi Medical Center  
sbigler@umc.edu

W. Stephen Black-Schaffer  
(PRODS)  
Massachusetts General Hospital  
sblackschaffer@partners.org

Stephen M. Bonsib  
(APC Chair)  
LSU Health Sciences Center  
sbonsi@lsuhsc.edu

Michael J. Borowitz  
(UMEDS)  
Johns Hopkins Med Inst  
mborowit@jhmi.edu

Donald M. Bowen  
(PDAS)  
U Alabama at Birmingham  
bowen@uab.edu

Patricia Braund  
(CAMS)  
U Colorado School of Medicine  
patricia.braund@ucdenver.edu

David Brink  
(PRODS)  
St Louis University HSC  
brinkds@slu.edu

Mark Brissette  
(Invited Speaker)  
Denver VA Medical Center  
mark.brissette@va.gov

Antoinette Brooke  
(PDAS)  
UMDNJ-Robert Wood Johnson  
brookeam@umdnj.edu

J. Gary Brown  
(PDAS)  
U Colorado School of Medicine  
gary.brown@ucdenver.edu

## Association of Pathology Chairs 2011 Annual Meeting

July 13-15, 2011

Monterey Plaza Hotel & Spa, Monterey, California

Leslie A. Bruch  
(PRODS)  
U Iowa College of Medicine  
leslie-bruch@uiowa.edu

Patrick J. Buckley  
(APC Chair)  
Duke University Medical Center  
patrick.buckley@duke.edu

Evan Cadoff  
(APC Chair)  
UMDNJ-Robert Wood Johnson  
cadoff@umdnj.edu

Rick Callahan  
(OTHER)  
NovoPath, Inc.  
rcallahan@novopath.com

Carolyn L. Cambor  
(UMEDS)  
U Pennsylvania  
camborc@uphs.upenn.edu

Mary Carayannopoulos  
(PRODS)  
UMDNJ-Robert Wood Johnson  
carayamo@umdnj.edu

Linda Carr  
(PDAS)  
U South Florida Col of Med  
lcarr@health.usf.edu

Jeffrey L. Casterline  
(PDAS)  
Drexel University College of Medicine

Robert Challenger  
(PDAS)  
U Pennsylvania Health System  
robert.challender@uphs.upenn.edu

Philip Chen  
(OTHER)  
U Miami School of Medicine  
pchen@med.miami.edu

Joseph Chiofolo  
(PRODS)  
Winthrop-University Hospital  
jchiofolo@winthrop.org

Deborah Chute  
(PRODS)  
Cleveland Clinic Foundation  
dchute1@gmail.com

Michael J. Clare-Salzler  
(APC Chair)  
U Florida  
salzler@ufl.edu

Raymond Clarke  
(APC Chair)  
Akron City Hospital  
(Summa Health System)  
clarker@summa-health.org

Loren Clarke  
(PRODS)  
Pennsylvania State College of Medicine  
LCLARKE@hmc.psu.edu

Frederick Clayton  
(UMEDS)  
U Utah School of Medicine  
drfclayton@gmail.com

Michael Coburn  
(Invited Speaker)  
Baylor College of Medicine  
mcoburn@bcm.edu

Christopher Cogbill  
(Residents)  
U Wisconsin  
cogbill@gmail.com

Stanley Cohen  
(APC Chair)  
UMDNJ-New Jersey School of Medicine  
cohenst@umdnj.edu

Michael Cohen  
(APC Chair)  
U Iowa College of Medicine  
michael-cohen@uiowa.edu

Richard Conran  
(UMEDS)  
Uniformed Services University  
Health Sciences  
rconran@usuhs.mil

Molly Cooke  
(Invited Speaker)  
U California, San Francisco  
mcooke@medicine.ucsf.edu

Ruth Cooper  
(PDAS)  
Yale University  
ruth.cooper@yale.edu

Richard J. Cote  
(APC Chair)  
U Miami  
rcote@med.miami.edu

James M. Crawford  
(APC Chair)  
North Shore-Long Island Jewish  
Medical Center  
jcrawford1@nshs.edu

Byron Crawford  
(UMEDS)  
Tulane University  
bcrawfo@tulane.edu

John T. Crosson  
(PRODS)  
U Minnesota  
cross008@umn.edu

Mark Curtis  
(PRODS)  
Thomas Jefferson University  
mark.curtis@jefferson.edu

Brian Datnow  
(PRODS)  
U California, San Diego  
bdatnow@ucsd.edu

Gina Deveney  
(CAMS)  
U Minnesota Medical School  
deveneyg@umn.edu

Barry DeYoung  
(UMEDS)  
U Iowa College of Medicine  
barry-deyoung@uiowa.edu

Thomas Dilts  
(PDAS)  
Virginia Commonwealth University  
tddilts@vcu.edu

Cheryl Dixon  
(CAMS)  
Scott & White Hospital  
cdixon@swmail.sw.org

Lisa Dixon  
(PRODS)  
U Florida College of Medicine  
dixolr@Pathology.ufl.edu

## Association of Pathology Chairs 2011 Annual Meeting

July 13-15, 2011

Monterey Plaza Hotel & Spa, Monterey, California

William (Tom) Dod  
(PDAS)  
Duke University Medical Center  
tom.dod@duke.edu

Virginia Donovan  
(APC Chair)  
Winthrop-University Hospital  
vdonovan@winthrop.org

Barbara S. Ducatman  
(APC Chair)  
Robert C Byrd HSC /  
West Virginia University  
bducatman@hsc.wvu.edu

Peter Dysert  
(APC Chair)  
Baylor U Medical Center, Dallas  
peterd@bhcs.com

John N. Eble  
(APC Chair)  
Indiana University  
jlindsle@iupui.edu

Ronald J. Elin  
(APC Chair)  
U Louisville, School of Medicine  
rjelin01@gwise.louisville.edu

Judy Elleson  
(PDAS)  
U Iowa College of Medicine  
judy-elleson@uiowa.edu

Kevin Ellison  
(OTHER)  
Kellison & Company  
kellison@kellison.com

Madeline Estillore  
(PDAS)  
U Arizona Hlth Sciences Center  
estillom@email.arizona.edu

John Fallon  
(APC Chair)  
New York Medical  
College/Westchester Med Ctr  
john\_fallon@nymc.edu

D. Greer Falls  
(PRODS)  
Medical College of Georgia  
gfalls@georgiahealth.edu

Andrea Ferreira-Gonzalez  
(Invited Speaker)  
Virginia Commonwealth  
University / MCV  
aferreira-gonzalez@mcvh-vcu.edu

Linda Ferrell  
(OTHER)  
U California, San Francisco  
linda.ferrell@ucsf.edu

Constance Filling  
(OTHER)  
College of American Pathologyogists  
cfillin@cap.org

James S. Fine  
(APC Chair)  
U Washington  
jsfine@uw.edu

Rose Anne Fischer  
(OTHER)  
ARUP Laboratories  
roseanne.fischer@aruplab.com

Wendy Frankel  
(OTHER)  
Ohio State University  
wendy.frankel@osumc.edu

Elizabeth E. Frauenhoffer  
(UMEDS)  
Penn State Col of Med  
- Hershey Medical Center  
efrauenhoffer@hmc.psu.edu

Shellaine Frazier  
(PRODS)  
University of Missouri-Columbia  
fraziersr@health.missouri.edu

Andreas Friedl  
(APC Chair)  
U Wisconsin Center Health Science  
afriedl@wisc.edu

Christine Fuller  
(PRODS)  
Virginia Commonwealth  
University / MCV  
cfuller@mcvh-vcu.edu

William K. Funkhouser  
(OTHER)  
U North Carolina-Chapel Hill  
bill\_funkhouser@med.unc.edu

Leo Furcht  
(APC Chair)  
U Minnesota Medical School  
furch001@umn.edu

Stephen Galli  
(APC Chair)  
Stanford University  
sgalli@stanford.edu

Regina Gandour-Edwards  
(UMEDS)  
U California, Davis  
regina.gandour-  
edwards@ucdmc.ucdavis.edu

Jacqueline Garcia  
(PDAS)  
U Texas Health Science Center -  
Houston  
Jacqueline.Garcia@uth.tmc.edu

Jerad Gardner  
(Resident)  
Emory University Hospital  
JMGardnerMD@gmail.com

Sheryl Garland  
(Invited Speaker)  
Virginia Commonwealth  
University/MCV  
sgarland@mcvh-vcu.edu

A. Julian Garvin  
(APC Chair)  
Wake Forest University  
ajgarvin@wfubmc.edu

Roger W. Geiss  
(APC Chair)  
U Illinois College of Medicine (Peoria)  
rgeiss@uic.edu

M.G.F. Gilliland  
(UMEDS)  
Brody School of Medicine  
/ East Carolina University  
mggillil@pcmh.com

Evelyn Gopez  
(PRODS)  
U Utah  
evelyn.gopez@hsc.utah.edu

Stan Gordon  
(OTHER)  
Cortex Medical Management Systems  
sgordon@cortexmed.com

**Association of Pathology Chairs 2011 Annual Meeting**

July 13-15, 2011

Monterey Plaza Hotel & Spa, Monterey, California

Chris Gormley  
(OTHER)  
Omnyx, LLC  
chris.gormley@omnyx.com

Joe W. Gray  
(Invited Speaker)  
U California, San Francisco  
Lawrence Berkeley Natl Laboratory  
jwgray@lbl.gov

Sandra Grear  
(OTHER)  
College of American Pathologists  
sgrear@cap.org

Margaret Grimes  
(UMEDS)  
Virginia Commonwealth  
University/MCV  
mgrimes@mcvh-vcu.edu

Brenda Grossman  
(PRODS)  
Washington University  
bgrossman@Pathology.wustl.edu

Steven Gudowski  
(PDAS)  
Thomas Jefferson University  
steven.gudowski@jefferson.edu

Kymerly Gyure  
(PRODS)  
Robert C Byrd HSC/WVA University  
kgyure@hsc.wvu.edu

Jennifer Hampshire  
(OTHER)  
American Society for Clinical Pathology  
jennifer.hampshire@ascp.org

Cheryl Hanau  
(APC Chair)  
Drexel University  
chanau@drexelmed.edu

Tony H. Hang  
(PDAS)  
U California, San Francisco  
hangt@labmed2.ucsf.edu

Beth Hansell  
(PDAS)  
Medical University of South Carolina  
hansellB@musc.edu

Clifford V. Harding  
(APC Chair)  
Case Western Reserve University  
clifford.harding@case.edu

James Harker  
(UMEDS)  
U Illinois Coll Med (Rockford)  
kimchee245@yahoo.com

Irene Harris  
(Invited Speaker)  
U Illinois College of Med-Chicago  
ibharris@uic.edu

Gretchen Harvey  
(PDAS)  
U Wisconsin  
gharvey@wisc.edu

Richard Haspel  
(PRODS)  
Beth Israel/Deaconess-East Campus  
rhaspel@bidmc.harvard.edu

Eyas Hattab  
(PRODS)  
Indiana University  
ehattab@iupui.edu

Richard Hegele  
(APC Chair)  
U Toronto  
richard.hegele@utoronto.ca

Susan Hill  
(PDAS)  
Indiana University  
suehill@iupui.edu

Charles Hill  
(PRODS)  
Emory University Hospital  
cehill@emory.edu

Charles L. Hitchcock  
(UMEDS)  
Ohio State University  
charles.hitchcock@osumc.edu

Benjamin Hoch  
(PRODS)  
U Washington  
bhoch@uw.edu

Robert D. Hoffman  
(PRODS)  
Vanderbilt University  
robert.d.hoffman@vanderbilt.edu

E. Blair Holladay  
(OTHER)  
American Society for Clinical Pathology  
blair.holladay@ascp.org

Carol Hollstein  
(CAMS)  
Loma Linda University  
chollstein@llu.edu

Jill Hostetler  
(CAMS)  
Ohio State University  
jill.hostetler@osumc.edu

Lydia Howell  
(APC Chair)  
U California, Davis Health System  
lydia.howell@ucdmc.ucdavis.edu

Sara Howen  
(CAMS)  
Mayo Clinic  
howen.sara@mayo.edu

Diana Hsu  
(PDAS)  
U California, San Francisco  
hsud@labmed2.ucsf.edu

Yajue Huang  
(PRODS)  
Temple University HSC  
yajue.huang@tuhs.temple.edu

Phyllis Huettner  
(PRODS)  
Washington University  
huettner@wustl.edu

Dora Hughes  
(Invited Speaker)  
Office of the Secretary, U.S.  
Dora.Hughes@hhs.gov

Peter A. Humphrey  
(OTHER)  
Washington University  
humphrey@path.wustl.edu

Robert L. Hunter  
(APC Chair)  
U Texas HSC - Houston  
Robert.L.Hunter@uth.tmc.edu

Aliya Husain  
(PRODS)  
U Chicago School of Medicine  
aliya.husain@uchospitals.edu

**Association of Pathology Chairs 2011 Annual Meeting**

July 13-15, 2011

Monterey Plaza Hotel & Spa, Monterey, California

Mujtaba Husain  
(UMEDS)  
U Central Florida  
mhusain@mail.ucf.edu

Gloria K. Hutchinson  
(PRODS)  
Baptist Med Ctr  
gloria.hutchinson@bhsala.com

John Hutter  
(PDAS)  
SUNY at Stony Brook  
john.hutter@stonybrook.edu

Sonya Hwang  
(PRODS)  
SUNY at Stony Brook  
sohwang@notes.cc.sunysb.edu

Gina L. Imperato  
(PDAS)  
Weill Medical College  
of Cornell University  
glimpera@med.cornell.edu

Kedar Vishwas Inamdar  
(PRODS)  
Henry Ford Hospital  
kinamda1@hfhs.org

Olga B. Ioffe  
(UMEDS)  
U Maryland School of Medicine  
oioffe@umaryland.edu

Colleen Jarosz  
(PDAS)  
Loyola University  
Cjarosz@lumc.edu

Katherine Jasnosz  
(PRODS)  
Allegheny General Hospital  
kjasnosz@wpahs.org

J. Charles Jennette  
(APC Chair)  
U North Carolina-Chapel Hill  
jcj@med.unc.edu

Peter Jensen  
(APC Chair)  
U Utah  
allison.boyer@path.utah.edu

Penny Johnson  
(CAMS)  
The Methodist Hospital System  
pkjohnson@tmhs.org

Rebecca Johnson  
(PRODS)  
Berkshire Health Systems  
rjohnson@bhs1.org

Allison Jones  
(CAMS)  
Georgetown University  
allison.r.jones@gunet.georgetown.edu

Michael Joshi-Guske  
(PDAS)  
U Florida College of Medicine  
guskemj@Pathology.ufl.edu

Leah Jozwiak  
(CAMS)  
Methodist Hospital System  
ljozwiak@tmhs.org

Melissa Kahn  
(PRODS)  
Cedars-Sinai Medical Center  
mdkahn2@yahoo.com

Donald Karcher  
(APC Chair)  
George Washington University  
dkarcher@mfa.gwu.edu

Karen Kaul  
(PRODS)  
North Shore University  
Health System  
kkaul@northshore.org

Christina Kim  
(CAMS)  
U California, LA Hospital Center  
ckkim@mednet.ucla.edu

Matthew Kirk  
(OTHER)  
ARUP Laboratories  
matthew.kirk@aruplab.com

Scott Kirkley  
(PRODS)  
U Rochester  
scott\_kirkley@urmc.rochester.edu

Doug Knapman  
(OTHER)  
College of American Pathologists  
dknapman@cap.org

Angelina Knott  
(PDAS)  
U Mississippi  
aknott@umc.edu

Michael Koch  
(APC Chair)  
U South Dakota, Sanford  
mrkoch@usd.edu

Chelle Kozy  
(CAMS)  
Orlando Regional Medical Center  
erika.kozy@orlandohealth.com

Peter J. Kragel  
(APC Chair)  
ECU Brody School of Medicine  
kragelp@ecu.edu

Chris Kramer  
(OTHER)  
Cortex Medical Management Systems  
ckramer@cortexmed.com

Thomas Krausz  
(OTHER)  
U Chicago  
thomas.krausz@uchospitals.edu

Vinay Kumar  
(APC Chair)  
U Chicago  
vkumar@bsd.uchicago.edu

Lisa LaChance  
(CAMS)  
Louisiana State University (Shreveport)  
llacha@lsuhsc.edu

Janice M. Lage  
(APC Chair)  
Medical University of South Carolina  
lagejm@musc.edu

Jonathan F. Lara  
(PRODS)  
Saint Barnabas Medical Center  
jlara@sbhcs.com

Martin Lawlor  
(PDAS)  
U Michigan Medical School  
lawlorm@med.umich.edu

Jeanne Lay  
(CAMS)  
U New Mexico  
jlay@salud.unm.edu

Andrew Lee  
(Invited Speaker)  
The Methodist Hospital System  
aglee@tmhs.org



**Association of Pathology Chairs 2011 Annual Meeting**

July 13-15, 2011

Monterey Plaza Hotel & Spa, Monterey, California

Victor Lee  
(PRODS)  
National University Hospital  
patvlkm@nvs.edu.sg

Jacqueline Macknis  
(PRODS)  
Oakland University  
JMacknis@beaumont.edu

Cindy M. McGrath  
(UMEDS)  
U Pennsylvania Medical Center  
cmcgrath@mail.med.upenn.edu

Debra G. B. Leonard  
(APC Chair)  
Weill Cornell Medical College  
eud9008@nyp.org

Trevor Macpherson  
(PRODS)  
U Pittsburgh  
tmacpherson@mail.magee.edu

Linda McGuire  
(PDAS)  
SUNY Downstate Medical Center  
linda.mcguire@downstate.edu

David Lewin  
(PRODS)  
Medical University of South Carolina  
lewin@musc.edu

Margret Magid  
(UMEDS)  
Mount Sinai School of Medicine  
margret.magid@mountsinai.org

Diana Medina  
(PDAS)  
U Texas Health Science Center  
medinad@uthcsa.edu

Fritz Lin  
(APC Chair)  
U California, Irvine  
flin@uci.edu

Tom Malone  
(OTHER)  
College of American Pathologists  
tmalone@cap.org

Michael Mengel  
(APC Chair)  
U Alberta, W Mackenzie HSC  
mmengel@ualberta.ca

Amy Lin  
(UMEDS)  
U Illinois at Chicago  
alin@uic.edu

Beth Mapow  
(PRODS)  
Drexel University  
beth.mapow@drexelmed.edu

George K. Michalopoulos  
(APC Chair)  
U Pittsburgh  
michalopoulosgk@upmc.edu

Julie Lindsley  
(PDAS)  
Indiana University  
jlindsle@iupui.edu

LeeTanya Marion-Murray  
(CAMS)  
Cedars-Sinai Medical Center  
LeeTanya.Marion-Murray@cshs.org

Martha Miers  
(PDAS)  
Vanderbilt University  
martha.miers@vanderbilt.edu

Cynthia Llanes  
(CAMS)  
Stanford University  
cllanes@stanford.edu

Shahla Masood  
(APC Chair)  
U Florida College of Medicine -  
Jacksonville  
shahla.masood@jax.ufl.edu

Karen Milakovic  
(PDAS)  
Pennsylvania State University  
kmilakovic@hmc.psu.edu

Teri Longacre  
(OTHER)  
Stanford University  
longacre@stanford.edu

Frank Mayo  
(OTHER)  
McKesson/Per-Se Technologies  
frank.mayo@mckesson.com

Margaret W. Miles  
(PDAS)  
Oregon Health Sciences University  
milesm@ohsu.edu

Melissa Lord-Toof  
(OTHER)  
American Pathology Foundation  
melissa@apfconnect.org

Marcia Huston McCall  
(PDAS)  
Wake Forest University  
mmccall@wfubmc.edu

Jonathan L. Miller  
(OTHER)  
U Chicago  
jlmiller@bsd.uchicago.edu

David Louis  
(APC Chair)  
Massachusetts General Hospital  
dlouis@partners.org

Susan McCarthy  
(PDAS)  
U Southern CA/LAC+USC /  
Keck School of Medicine  
susanmcc@usc.edu

Douglas C. Miller  
(PRODS)  
U Missouri  
millerdc@health.missouri.edu

Robert L. Low  
(PRODS)  
U Colorado  
robert.low@ucdenver.edu

Elizabeth McDonald  
(CAMS)  
U Rochester  
betsy\_mcdonald@urmc.rochester.edu

Suzanne S. Mirra  
(APC Chair)  
SUNY Downstate Medical Center  
suzanne.mirra@downstate.edu

Clifford Lowell  
(APC Chair)  
U California, San Francisco  
clifford.lowell@ucsf.edu

Fatima Mohamud  
(PDAS)  
U California, Davis Medical Center  
fatima.mohamud@ucdmc.ucdavis.edu

## Association of Pathology Chairs 2011 Annual Meeting

July 13-15, 2011

Monterey Plaza Hotel & Spa, Monterey, California

Corina Moreno  
(CAMS)  
The Methodist Hospital System  
cmoreno@tmhs.org

Carlos Moreno  
(Invited Speaker)  
Emory University  
cmoreno@emory.edu

Jon S. Morrow  
(APC Chair)  
Yale University  
jon.morrow@yale.edu

Amy Motta  
(CAMS)  
U Utah  
amy.motta@aruplab.com

Robert E Mrak  
(APC Chair)  
U Toledo HSC  
Robert.Mrak@UToledo.edu

William A. Muller  
(APC Chair)  
Northwestern University  
Feinberg School of Medicine  
wamuller@northwestern.edu

James Mallory Musser  
(APC Chair)  
The Methodist Hospital  
Research Institute  
jmmusser@tmhs.org

Jeffrey L. Myers  
(OTHER)  
U Michigan  
myerjeff@umich.edu

Wesley Y. Naritoku  
(PRODS)  
Keck School of Medicine of  
USC/LAC+USC Med Ctr  
naritoku@usc.edu

Thomas Nasca  
(Invited Speaker)  
Accreditation Council for Graduate  
Medical Education  
tnasca@acgme.org

Kevin Nash  
(UMEDS)  
U of Southern CA/LAC+USC/Keck  
School of Medicine  
kanash@usc.edu

Cynthia C. Nast  
(PRODS)  
Cedars-Sinai Medical Center  
nast@cshs.org

Pamela Nelson  
(CAMS)  
Wayne State University  
pnelson@med.wayne.edu

Ann Neumann  
(OTHER)  
College of American Pathologists  
aneumann@cap.org

Santo V. Nicosia  
(APC Chair)  
U South Florida  
snicosia@health.usf.edu

Vania Nose  
(OTHER)  
U Miami School of Medicine  
Vnose@med.miami.edu

Nancy Nye  
(PDAS)  
U North Carolina at Chapel Hill  
Nancy.Nye@Pathology.unc.edu

Darrell O'Sullivan  
(PDAS)  
U California, Davis  
darrell.osullivan@ucdmc.ucdavis.edu

Dennis L. Padget  
(Invited Speaker)  
DL Padget Enterprises, Inc.  
DennisPadget@embarqmail.com

Pam Palmersheim  
(OTHER)  
College of American Pathologists  
ppalmer@cap.org

Tristram Parslow  
(APC Chair)  
Emory University Hospital  
tparslo@emory.edu

Amanda Paus  
(CAMS)  
U Wisconsin  
apaus@uwhealth.org

Yuri Persidsky  
(APC Chair)  
Temple University  
yuri.persidsky@tuhs.temple.edu

Barbara Petit  
(PDAS)  
U Texas Medical Branch  
bhp Petit@utmb.edu

Carol Petito  
(PRODS)  
U Miami School of Medicine /  
Jackson Memorial Hospital  
cpetito@med.miami.edu

John Pfeifer  
(APC Chair)  
Washington University  
pfeifer@wustl.edu

Carrie Phillips  
(PRODS)  
Indiana University  
cphilli3@iupui.edu

Annita Pierro  
(CAMS)  
U California, LA Hospital Center  
apierro@mednet.ucla.edu

Carole L. Pillinger  
(UMEDS)  
U South Carolina  
Carole.Pillinger@uscmed.sc.edu

Yvonne Posey  
(UMEDS)  
William Beaumont Hospital  
Yvonne.Posey@beaumont.edu

Suzanne Z. Powell  
(PRODS)  
The Methodist Hospital System  
spowell@tmhs.org

Barb Prentiss  
(PDAS)  
U Washington  
bpbalasc@uw.edu

Judy Pugh  
(PRODS)  
Arizona HSC  
jpugh1@email.arizona.edu

Harry E. Pukay-Martin  
(PDAS)  
Ohio State University  
harry.pukay-martin@osumc.edu

Petrie M. Rainey  
(PRODS)  
U Washington  
prrainey@u.washington.edu

**Association of Pathology Chairs 2011 Annual Meeting**

July 13-15, 2011

Monterey Plaza Hotel & Spa, Monterey, California

Raga Ramachandran  
(UMEDS)  
U California, San Francisco  
rageshree.ramachandran@ucsf.edu

William Rodgers  
(APC Chair)  
Lenox Hill Hospital  
wrodgers@lenoxhill.net

Linda Schiffhauer  
(UMEDS)  
U Rochester Medical Center  
linda\_schiffhauer@urmc.rochester.edu

Rajendra Ramsamooj  
(PRODS)  
U California, Davis  
rajendra.ramsamooj@ucdmc.ucdavis.edu

Michael Roehrl  
(Invited Speaker)  
Boston Medical Center  
Michael.Roehrl@bmc.org

Suzanne Scott  
(PDAS)  
U Kansas School of Medicine  
sscott@kumc.edu

Erik Ranheim  
(PRODS)  
U Wisconsin  
earanheim@wisc.edu

Joseph Rondinelli  
(PDAS)  
UMDNJ-New Jersey Medical Center  
rondinjd@umdnj.edu

Shirene Seina  
(CAMS)  
U Nebraska Medical Center  
sseina@unmc.edu

Robert L. Reddick  
(APC Chair)  
U Texas Health Science Center  
reddick@uthscsa.edu

Kevin A. Roth  
(APC Chair)  
U of Alabama at Birmingham  
karoeth@uab.edu

Mary Ann Sens  
(APC Chair)  
U North Dakota School of Medicine  
and Health Science  
mary.sens@med.und.edu

Renee Reich  
(PRODS)  
Evanston Hospital  
RReich@northshore.org

David Roth  
(APC Chair)  
U Pennsylvania  
david.roth2@uphs.upenn.edu

Darshana Shah  
(UMEDS)  
JCESOM at Marshall University  
shah@marshall.edu

Howard Michael Reisner  
(UMEDS)  
U North Carolina-Chapel Hill  
reisner@med.unc.edu

Andrea Saenim  
(PDAS)  
U Illinois, Chicago  
sandrea@uic.edu

Arwa Shana'ah  
(PRODS)  
Ohio State University  
arwa.shanaah@osumc.edu

Daniel Remick  
(APC Chair)  
Boston University  
remickd@bu.edu

Jeffrey E. Saffitz  
(APC Chair)  
Beth Israel Deaconess Medical Center  
jsaffitz@bidmc.harvard.edu

Vinod Shidham  
(PRODS)  
Wayne State University  
vshidham@med.wayne.edu

Michelle Rickard  
(CAMS)  
U Washington  
msrme@u.washington.edu

Diva Salomao  
(PRODS)  
Mayo Clinic  
salomao.diva@mayo.edu

David Shimizu  
(PRODS)  
U Hawaii/John A. Burns  
School of Medicine  
dshimizu@queens.org

Henry Rinder  
(PRODS)  
Yale-New Haven Med Ctr  
henry.rinder@yale.edu

Amy M. Sands  
(PRODS)  
SUNY at U Buffalo  
asands@buffalo.edu

Kenneth R. Shroyer  
(APC Chair)  
Stony Brook Medical Center  
kenneth.shroyer@stonybrook.edu

Nancy Risenhoover  
(PDAS)  
U New Mexico  
nrisenhoover@salud.unm.edu

Samuel A. Santoro  
(APC Chair)  
Vanderbilt University  
samuel.santoro@vanderbilt.edu

Anwer Siddiqi  
(PRODS)  
U Mississippi  
asiddiqi@umc.edu

Stanley Robboy  
(APC Alumni/Sr Fellow)  
Duke University  
stanley.robboy@duke.edu

Ravindranauth Sawh  
(PRODS)  
U Oklahoma Coll Med  
ravindranauth-sawh@ouhsc.edu

John Sinard  
(PRODS)  
Yale University  
john.sinard@yale.edu

Mary Jo Robinson  
(UMEDS)  
Pacific Northwest University  
mrobinson@pnwu.org

Arnold Scheer  
(PDAS)  
U California, LA Hospital Center  
ascheer@mednet.ucla.edu

**Association of Pathology Chairs 2011 Annual Meeting**

July 13-15, 2011

Monterey Plaza Hotel & Spa, Monterey, California

Meenakshi Singh  
(UMEDS)  
SUNY at Stony Brook  
meenakshi.singh@stonybrook.edu

Brian Richard Smith  
(APC Chair)  
Yale University  
Brian.Smith@yale.edu

Vickie Smith  
(CAMS)  
Wake Forest University  
School of Medicine  
vcsmith@wfubmc.edu

Forrest Bud Smith  
(PDAS)  
University of Missouri  
smithfh@health.missouri.edu

Mark Sobel  
(STAFF)  
Association of Pathology Chairs  
mesobel@asip.org

Richard Sobonya  
(PRODS)  
Arizona HSC  
rsobonya@email.arizona.edu

Thomas Sodeman  
(APC Alumni/Sr Fellow)  
U Miami School of Medicine  
TSodeman@med.miami.edu

Vera Solomon  
(PDAS)  
Montefiore Medical Center /  
Albert Einstein College of Medicine  
vsolomon@montefiore.org

Wally Soufi  
(OTHER)  
NovoPath, Inc.  
wsoufi@novopath.com

V. O. Speights  
(PRODS)  
Scott & White Hospital  
vspeights@swmail.sw.org

Constance Stanton  
(PRODS)  
Wake Forest University  
stanton@wakehealth.edu

Jacob J. Steinberg  
(PRODS)  
Montefiore Medical Center /  
Albert Einstein College of Medicine  
jsteinbe@montefiore.org

Judy Sterry  
(PDAS)  
U Rochester  
judy\_sterry@urmc.rochester.edu

Christopher P. Stowell  
(PRODS)  
Massachusetts General Hospital  
cstowell@partners.org

David Strong  
(PDAS)  
U Rochester Medical Center  
david\_strong@urmc.rochester.edu

Joan Sullivan  
(CAMS)  
North Shore - Long Island Jewish  
Health System  
sullivan@lij.edu

Kelley W. Suskie  
(PDAS)  
U Arkansas for Medical Sciences  
ksuskie@uams.edu

Saul Suster  
(APC Chair)  
The Medical College of Wisconsin  
ssuster@mcw.edu

Erik Swanson  
(OTHER)  
Lippincott William & Wilkins - Wolters  
Kluwer Health  
erik.swanson@wolterskluwer.com

Michael L. Talbert  
(APC Chair)  
University of Oklahoma HSC  
michael-talbert@ouhsc.edu

Dennis J. Templeton  
(APC Chair)  
U Virginia  
dt9b@virginia.edu

Enrique Terrazas  
(PRODS)  
U California, San Francisco  
enrique.terrazas@ucsf.edu

Karl Theil  
(PRODS)  
Cleveland Clinic Foundation  
theilk@ccf.org

Nancie Thompson  
(OTHER)  
American Society for Clinical Pathology  
Nancie.Thompson@ascp.org

Ann D. Thor  
(APC Chair)  
U Colorado, Denver  
ann.thor@ucdenver.edu

Gregory A. Threatte  
(APC Chair)  
SUNY Upstate Medical University  
threatte@upstate.edu

Lowell Tilzer  
(APC Chair)  
U Kansas Med Ctr  
ltilzer@kumc.edu

Charles Timmons  
(PRODS)  
U Texas Southwestern  
charles.timmons@childrens.com

John Tomaszewski  
(APC Chair)  
U Pennsylvania  
tomaszew@mail.med.upenn.edu

Douglas Toothman  
(PDAS)  
Robert C Byrd HSC /  
West Virginia University  
dtoothman@hsc.wvu.edu

Lily Tuan  
(PDAS)  
Northwestern University  
ltuan@northwestern.edu

J. Allan Tucker  
(APC Chair)  
U South Alabama  
atucker@usouthal.edu

William Twaddell  
(PRODS)  
U Maryland School of Medicine  
wtwaddell@umm.edu

Richard S. Vander Heide  
(APC Chair)  
Louisiana State University HSC  
rvand3@lsuhsc.edu

**Association of Pathology Chairs 2011 Annual Meeting**

July 13-15, 2011

Monterey Plaza Hotel & Spa, Monterey, California

Caer Vitek  
(OTHER)  
Mayo Clinic  
vitek.carolyn@mayo.edu

Karl Voelkerding  
(Invited Speaker)  
ARUP Laboratories  
voelkek@aruplab.com

Carole A. Vogler  
(APC Chair)  
St. Louis University  
voglerca@slu.edu

Kai Wang  
(PDAS)  
U California, San Francisco  
kai.wang@ucsf.edu

Katie Warfield  
(CAMS)  
U Maryland School of Medicine  
KWarfiel@som.umaryland.edu

Bob Weathers  
(OTHER)  
McKesson/Per-Se Technologies  
bob.weathers@per-se.com

Lisa Webb  
(OTHER)  
Lippincott William & Wilkins  
lisa.webb@wolterskluwer.com

Karen Weck  
(Invited Speaker)  
U North Carolina  
kweck@unch.unc.edu

Douglas A. Weeks  
(APC Chair)  
Oregon Health Sciences University  
weeksd@ohsu.edu

Marcia R. Weis  
(PDAS)  
St. Louis University  
mweis4@slu.edu

David J. Weissmann  
(UMEDS)  
UMDNJ-Robt Wood Johnson  
School of Medicine  
weissmdj@umdnj.edu

Thomas M Wheeler  
(APC Chair)  
Baylor College of Medicine  
twheeler@bcm.edu

Marjel Whitmore  
(PDAS)  
Creighton University Medical Center  
marjelwhitmore@creighton.edu

David S. Wilkinson  
(APC Chair)  
Virginia Commonwealth Univ / MCV  
dwilkinson@mcvh-vcu.edu

Thomas Williams  
(APC Chair)  
U New Mexico  
krmarquez@salud.unm.edu

Marsha Williams  
(PDAS)  
U Utah  
marsha.williams@path.utah.edu

Harold Williams  
(UMEDS)  
Robert C Byrd HSC/WVA University  
hjwilliams@wvuhealthcare.com

Gayle L. Winters  
(PRODS)  
Brigham & Women's Hospital  
gwinters@partners.org

Eva Wojcik  
(APC Chair)  
Loyola University Medical Center  
ewojcik@lumc.edu

Jane Pine Wood  
(Invited Speaker)  
McDonald Hopkins  
jwood@mcdonaldhopkins.com

John Woosley  
(UMEDS)  
U North Carolina  
jwoosley@unch.unc.edu

David Wooster  
(PDAS)  
Yale University  
david.wooster@yale.edu

Tong Wu  
(APC Chair)  
Tulane University HSC  
twu@tulane.edu

Debra Wycoff  
(CAMS)  
Yale University  
debra.wycoff@yale.edu

Nan Yamamura-Higa  
(CAMS)  
U Hawaii/John A Burns  
School of Medicine  
nany@hawaii.edu

Marwan Yared  
(PRODS)  
UAMS Tissue Bank/U Arkansas for  
Medical Sciences  
myared@uams.edu

Josh Yelen  
(PDAS)  
U Miami School of Medicine  
jyelen@med.miami.edu

Samuel A. Yousem  
(OTHER)  
U Pittsburgh Medical School  
yousemsa@upmc.edu

Reinhard Zachrau  
(UMEDS)  
New York Medical College  
zachrau@nymc.edu

Dani Zander  
(APC Chair)  
Pennsylvania State University  
dzander@hmc.psu.edu

Marci Zerante  
(OTHER)  
College of American Pathologists  
mzerant@cap.org

Xiaohui (Sheila) Zhao  
(PRODS)  
U California, Irvine  
zhaox@uci.edu

Joel Ziebarth  
(PRODS)  
LCM Pathologyogists P.C.  
jziebarth@lcmopath.com

Kathy Zoumberos  
(PDAS)  
Moffitt Cancer Center  
kathy.zoumberos@moffitt.org

Mary Zutter  
(PRODS)  
Vanderbilt University  
mary.zutter@vanderbilt.edu



American Society for  
Clinical Pathology



**2011 ASCP Annual Meeting/  
WASPaLM XXVI World Congress**

**OCTOBER 19-22 • LAS VEGAS**

**The Venetian - Palazzo Resort Hotel Casinos**

ASCP is honored to present...

# President Bill Clinton

2011 ASCP ANNUAL MEETING  
KEYNOTE SPEAKER



The perfect meeting designed specifically for all members  
of the pathology and laboratory medicine team.

- Superior Science
- Exceptional Education
- Top-Notch Technology
- Energizing Experiences
- Custom Curriculum

Register online: [www.ascp.org/2011AnnualMeeting](http://www.ascp.org/2011AnnualMeeting)

*If you can only attend one conference this year, this is it!*







# ANNUAL REVIEWS

Global. Mobile. Relevant Research.

NOW  
AVAILABLE  
ON MOBILE  
DEVICES!

## Annual Review of Pathology: Mechanisms of Disease

Volume 6 • February 2011 • Online & In Print • <http://pathol.annualreviews.org>

Co-Editors: **Abul K. Abbas**, *University of California, San Francisco*  
**Stephen J. Galli**, *Stanford University School of Medicine*  
**Peter M. Howley**, *Harvard Medical School*

The *Annual Review of Pathology: Mechanisms of Disease*, in publication since 2006, covers significant advances in our understanding of the initiation and progression of important human diseases. Emphasis is placed on current and evolving concepts of disease pathogenesis, molecular genetic and morphologic alterations associated with diseases, and clinical significance.

**Access this and all Annual Reviews journals via your institution at [www.annualreviews.org](http://www.annualreviews.org)**

Personal copies available at a reduced rate. Institutional site license options available. Contact Annual Reviews for details.

### TABLE OF CONTENTS:

- Starting in Immunology by Way of Immunopathology, *Emil R. Unanue*
- The Pathogenesis of Sepsis, *Deborah J. Stearns-Kurosawa, Marcin F. Osuchowski, Catherine Valentine, Shinichiro Kurosawa, Daniel G. Remick*
- EGFR Mutations and Lung Cancer, *Gilda da Cunha Santos, Frances A. Shepherd, Ming Sound Tsao*
- Zebrafish Models for Cancer, *Shu Liu, Steven D. Leach*
- Mouse Models of Cancer, *Dong-Joo Cheon, Sandra Orsulic*
- Disorders of Bone Remodeling, *Xu Feng, Jay M. McDonald*
- The Acute Respiratory Distress Syndrome: Pathogenesis and Treatment, *Michael A. Matthay, Rachel L. Zemans*
- The HIF Pathway and Erythrocytosis, *Frank S. Lee, Melanie J. Percy*
- Parkinson's Disease: Genetics and Pathogenesis, *Joshua M. Shulman, Philip L. De Jager, Mel B. Feany*
- Pathogenic Mechanisms of HIV Disease, *Susan Moir, Tae-Wook Chun, Anthony S. Fauci*
- Pathogenesis of Myeloma, *Kenneth Anderson, Ruben D. Carrasco*
- Alternative Macrophage Activation and Metabolism, *Justin I. Odegaard, Ajay Chawla*
- The Pathobiology of Arrhythmogenic Cardiomyopathy, *Jeffrey E. Saffitz*
- Mechanisms of Leukocyte Transendothelial Migration, *William A. Muller*
- Retinoids, Retinoic Acid Receptors, and Cancer, *Xiao-Han Tang, Lorraine J. Gudas*
- Biomedical Differences Between Human and Nonhuman Hominids: Potential Roles for Uniquely Human Aspects of Sialic Acid Biology, *Nissi M. Varki, Elizabeth Strobert, Edward J. Dick Jr., Kurt Benirschke, Ajit Varki*
- A Glimpse of Various Pathogenetic Mechanisms of Diabetic Nephropathy, *Yashpal S. Kanwar, Lin Sun, Ping Xie, Fu-you Liu, Sheldon Chen*
- Pathogenesis of Liver Fibrosis, *Virginia Hernandez-Gea, Scott L. Friedman*
- Mesenchymal Stem Cells: Mechanisms of Inflammation, *Nora G. Singer, Arnold I. Caplan*
- Molecular Genetics of Colorectal Cancer, *Eric R. Fearon*
- The Pathogenesis of Systemic Sclerosis, *Tamiko R. Katsumoto, Michael L. Whitfield, M. Kari Connolly*

**ANNUAL REVIEWS** • Guiding Scientists to Essential Research Since 1932

TEL: 800.523.8635 (US/CAN) • TEL: 650.493.4400 (WORLDWIDE) • FAX: 650.424.0910 (WORLDWIDE) • EMAIL: [service@annualreviews.org](mailto:service@annualreviews.org)

