



Association of Pathology Chairs

APC 2013 MEETING PROGRAM

www.apcprods.org/meetings/2013/

July 9 - 12, 2013

Seaport Boston Hotel · Boston, Massachusetts



STRONGERTOGETHER
KNOWLEDGE+ADVANCEMENT+COLLABORATION+GLOBAL COMMUNITY+

VISIT our booth (#2) , **DISCUSS** your needs, and **LEARN** how ASCP's quality education and stellar products can serve you and your residents.

RISE & SHINE!

Meet the Manager of RISE & PRISE, Jay Wagner, MBA, MLS(ASCP)^{CM} and Chair of ASCP's RISE Committee, Henry Rinder, MD, FASCP, as they answer any questions you have about the products and how they will help you and your residents meet your educational goals.



LAB MANAGEMENT
UNIVERSITY

A certificate program designed by APF and ASCP to improve competency in laboratory management and prepare individuals for leadership roles.

ascp.org/lmu



PRISE

The comprehensive self-assessment study tool, with three editions available, will prepare pathologists for the American Board of Pathology (ABP) Maintenance of Certification (MOC) Part III Cognitive Examination and also serves as an effective study aid for residents.

ascp.org/prise



RISE

ASCP's Resident In-Service Examination (RISE) helps residents and program directors evaluate progress in training and medical knowledge. RISE can assess progress in anatomic pathology, clinical pathology, molecular pathology, and laboratory administration.

ascp.org/residents/rise

2013

BEYOND THE LAB

CHICAGO 09.18-09.21



The Meeting You Can't Miss!

Register Today.
ascp.org/ASCP2013



1

INCREDIBLE
KEYNOTE
SPEAKER

2,000+
PROFESSIONAL
PEERS

3

SHOW-
STOPPING
GENERAL
SESSIONS

4

MEMORABLE
DAYS OF
LEARNING

18+

HOURS OF LAB
MANAGEMENT
LEARNING

19

HOURS OF
PATHOLOGY
INFORMATICS
CONTENT

180+

EDUCATIONAL
SESSIONS



ANNUAL REVIEWS

Celebrating 80 Years of Excellence

NOW AVAILABLE
ON MOBILE DEVICES!

Annual Review of Pathology: Mechanisms of Disease

Volume 8 • January 2013 • Online & In Print • <http://pathol.annualreviews.org>

Co-Editors: **Abul K. Abbas**, *University of California, San Francisco*
Stephen J. Galli, *Stanford University School of Medicine*
Peter M. Howley, *Harvard Medical School*

The *Annual Review of Pathology: Mechanisms of Disease*, in publication since 2006, covers significant advances in our understanding of the initiation and progression of important human diseases. Emphasis is placed on current and evolving concepts of disease pathogenesis, molecular genetic and morphologic alterations associated with diseases, and clinical significance.

Access this and all Annual Reviews journals via your institution at www.annualreviews.org.

Personal copies available at a reduced rate. Institutional site license options available. Contact Annual Reviews for details.

TABLE OF CONTENTS:

- *Pathogenesis of Langerhans Cell Histiocytosis*, Gayane Badalian-Very, Jo-Anne Vergilio, Mark Fleming, Barrett J. Rollins
- *Molecular Pathophysiology of Myelodysplastic Syndromes*, R. Coleman Lindsley, Benjamin L. Ebert
- *The Role of Telomere Biology in Cancer*, Lifeng Xu, Shang Li, Bradley A. Stohr
- *Chromosome Translocation, B Cell Lymphoma, and Activation-induced Cytidine Deaminase*, Davide F. Robbiani, Michel C. Nussenzweig
- *Autophagy as a Stress-Response and Quality-Control Mechanism: Implications for Cell Injury and Human Disease*, Lyndsay Murrow, Jayanta Debnath
- *Pathogenesis of Antineutrophil Cytoplasmic Autoantibody—Associated Small-Vessel Vasculitis*, J. Charles Jennette, Ronald J. Falk, Peiqi Hu, Hong Xiao
- *Molecular Basis of Asbestos-Induced Lung Disease*, Gang Liu, Paul Cheresh, David W. Kamp
- *Progressive Multifocal Leukoencephalopathy: Why Gray and White Matter*, Sarah Gheuens, Christian Wüthrich, Igor J. Koralnik
- *IgA Nephropathy: Molecular Mechanisms of the Disease*, Jiri Mestecky, Milan Raska, Bruce A. Julian, Ali G. Gharavi, Matthew B. Renfrow, Zina Moldoveanu, Lea Novak, Karel Matousovic, Jan Novak
- *Host Responses in Tissue Repair and Fibrosis*, Jeremy S. Duffield, Mark Luper, Victor J. Thannickal, Thomas A. Wynn
- *Cellular Heterogeneity and Molecular Evolution in Cancer*, Vanessa Almendro, Andriy Marusyk, Kornelia Polyak
- *The Immunobiology and Pathophysiology of Primary Biliary Cirrhosis*, Gideon M. Hirschfield, M. Eric Gershwin
- *Digital Imaging in Pathology: Whole-Slide Imaging and Beyond*, Farzad Ghaznavi, Andrew Evans, Anant Madabhushi, Michael Feldman
- *Pathological and Molecular Advances in Pediatric Low-Grade Astrocytoma*, Fausto J. Rodriguez, Kah Suan Lim, Daniel Bowers, Charles G. Eberhart
- *Diagnostic Applications of High-Throughput DNA Sequencing*, Scott D. Boyd
- *Pathogenesis of the Viral Hemorrhagic Fevers*, Slobodan Paessler, David H. Walker
- *Skeletal Muscle Degenerative Diseases and Strategies for Therapeutic Muscle Repair*, Mohammadsharif Tabebordbar, Eric T. Wang, Amy J. Wagers
- *The Th17 Pathway and Inflammatory Diseases of the Intestines, Lungs, and Skin*, Casey T. Weaver, Charles O. Elson, Lynette A. Fouser, Jay K. Kolls





Digital Pathology. Getting it right. Faster.

A grayscale photograph showing a person's hand touching a tablet. The tablet displays a digital histology slide with a software interface. The interface includes a top navigation bar with text like "Assigned to Dr. Elizabeth Winger" and "24 year old male, Test: Kidney", and various icons for "Diagnosis", "Annotations", "Overview", and "Hist". A small inset window on the right shows a zoomed-in view of a specific area of the slide.

Speed. Convenience. Accuracy. Security.

The only image-based Digital Pathology Network Platform that empowers Pathologists with:

- Faster access to expert 2nd opinions.
- Faster access and management of image-based pathology data throughout the network.
- Faster management of case flow and workload. Simple-to-use and intuitive interface speeds up case assignment, diagnosis, management and reporting.

Only the Corista platform works with any scanner and is accessible from any browser-enabled device.

Contact us to find out how our digital pathology network platform connects remote patients, doctors, and medical centers with expert pathology centers for faster collaboration using any digital scanner.

Corista

9 Damonmill Square
Suite 6A
Concord, MA 01742
978-287-6188
www.corista.com

Association of Pathology Chairs 2013 Annual Meeting

July 9-12, 2013

Seaport Boston Hotel, Boston, Massachusetts

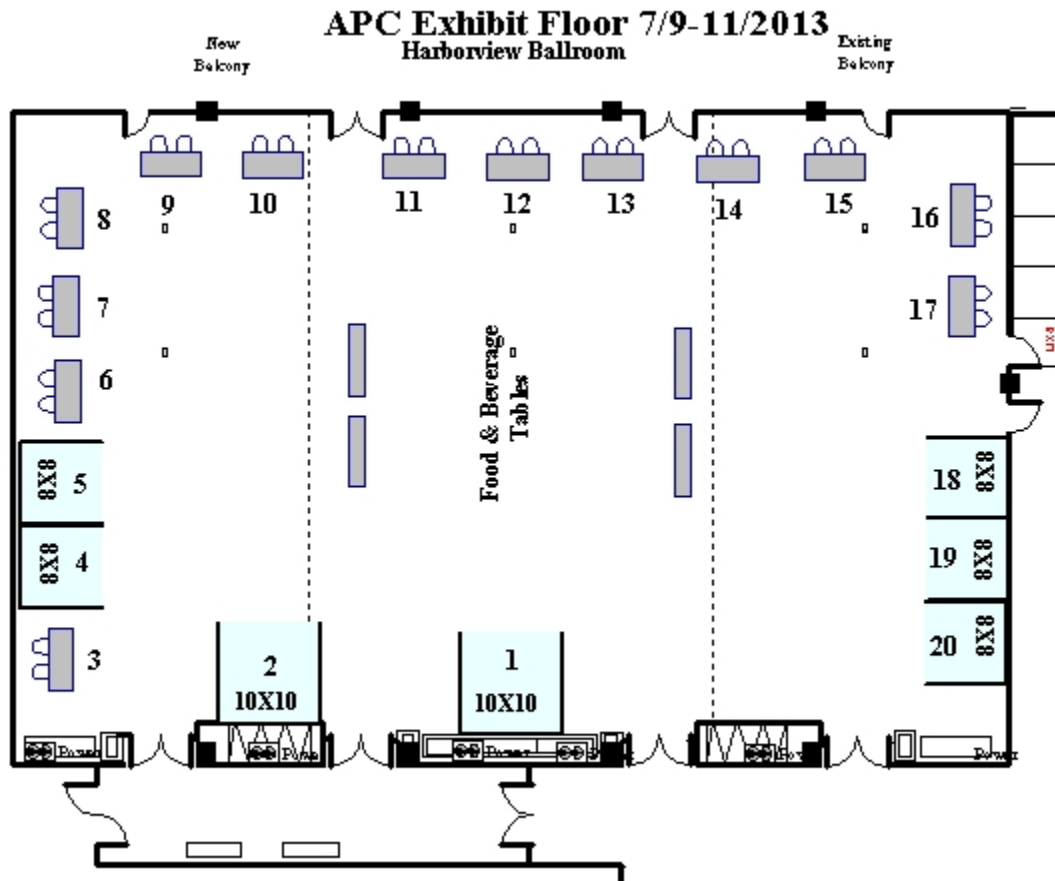


EXHIBIT HALL – SEAPORT BOSTON HOTEL – WORLD TRADE CENTER Harborview Ballroom 1-3

Diamond Partners

American Society for Clinical Pathology – #2
College of American Pathologists – #1

Gold Partners

The American Society for Investigative Pathology/*The American Journal of Pathology* – #4
ARUP Laboratories – #19
Corista, LLC – #18
Kellison & Company – #20
Paradigm, Inc. – #5

Exhibitors

AccuCore Group – #15
American Pathology Foundation – #11
APS Medical Billing – #12
The Dark Report – #9
Lippincott Williams & Wilkins/Wolters Kluwer Health – #16
McKesson Revenue Management Solutions – #7
MedData – #14
MOPEC, Inc. – #13
NovoPath – #17
Sakura Finetek USA – #3
Spot Imaging Solutions – #6
Vachette Pathology – #10
Voicebrook – #8

Comprehensive Anatomic Pathology Consultative Services

Cleveland Clinic Laboratories offers second opinion surgical pathology case review performed by nationally and internationally recognized teams of subspecialty trained anatomic pathologists.

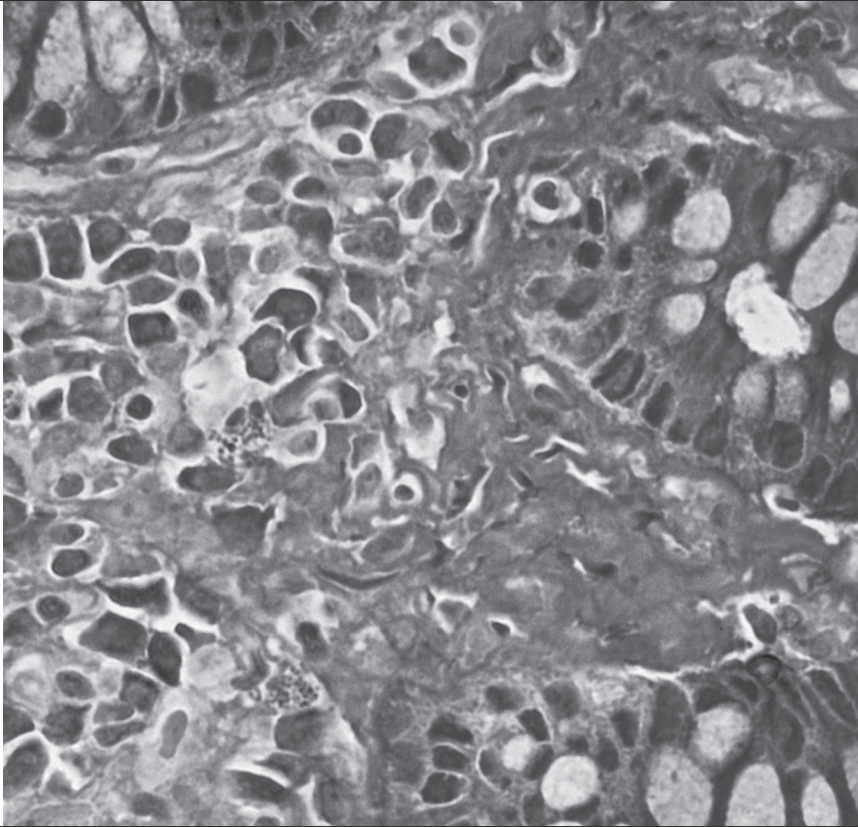
In addition to conventional evaluation techniques, our pathologists maintain expertise in state-of-the-art technologies in:

Molecular Pathology

Immunohistochemistry and
Immunofluorescence

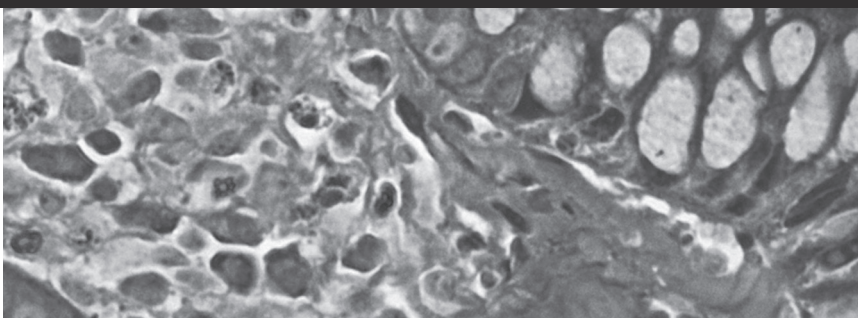
Electron Microscopy

Cytogenetics



TRUST in us for everything you need in a reference lab.

For more information, call Client Services at 800.628.6816 or visit: clevelandcliniclabs.com



Association of Pathology Chairs 2013 Annual Meeting

July 9-12, 2013

Seaport Boston Hotel, Boston, Massachusetts

Exhibit Schedule (Harborview Ballroom 1-3)

Tuesday, July 9, 2013

6:00pm – 9:00pm

Wednesday, July 10, 2013

7:00am – 6:00pm

Thursday, July 11, 2013

7:00am – 4:00pm

DIAMOND Partner Descriptions

American Society for Clinical Pathology (Booth #2)

ASCP will present a report on the 2013 RISE and ASCP Fellowship and Job Market Surveys and have copies available at its Exhibit Booth #2. Also, attendees will have an opportunity to talk with Dr. Henry Rinder, Resident Program Director at Yale University; Dr. Karen Frank, incoming RISE Committee Chair from the National Institutes of Health; and Jay Wagner, ASCP RISE Manager, as well as obtain an update from the Chair-Elect of the ASCP Resident Council. For resident program directors, ASCP has developed many online resources and tools. Its best-selling products that promote knowledge for residents and pathologists include PRISE (Pathologist Recertification Individualized Self-Assessment Examination, an online modular education tool for studying for resident boards or pathologist recertification; RISE (Resident In-Service Examination), a program to assess and track residents' medical knowledge in anatomic pathology, clinical pathology, and molecular pathology; and Lab Management University, which is a 25-course certificate program in lab management of both live and online courses taught by an outstanding faculty. For more information visit: www.ascp.org

College of American Pathologists (Booth #1)

The College of American Pathologists (CAP) is a medical society serving more than 18,000 physician members and the global laboratory community. It is the world's largest association composed exclusively of board-certified pathologists and is the worldwide leader in laboratory quality assurance. For more information visit: www.cap.org

GOLD Partner Descriptions

The American Society for Investigative Pathology/*The American Journal of Pathology* (Booth #4)

The mission of The American Society for Investigative Pathology (ASIP) is to promote the discovery, advancement, and dissemination of knowledge in experimental pathology and related disciplines. This shall be achieved by fostering investigation into the pathogenesis, classification, diagnosis, and manifestations of disease through meetings, publications, and educational activities. The Society is the owner of *The American Journal of Pathology (AJP)*. *AJP* is the leading global forum for reporting research on cellular and molecular mechanisms of disease publishing high-quality, original papers on the cellular and molecular biology of disease. For more information visit: www.asip.org

ARUP Laboratories (Booth #19)

Founded in 1984, ARUP Laboratories is a leading national reference laboratory and a nonprofit enterprise of the University of Utah and its Department of Pathology. ARUP offers more than 3,000 tests and test combinations, ranging from routine screening tests to esoteric molecular and genetic assays. ARUP serves clients across the United States. For more information visit: www.aruplab.com

Corista. LLC (Booth #18)

GETTING IT RIGHT. FASTER.

Corista's Image Centric solution provides a complete digital pathology environment and integrates with any WSI scanner. The platform provides workflow, tele-pathology, collaboration, synoptic reporting, LIS integration, integrated images with patient data and text search producing result sets with images. The highly secure environment and workflow together with a robust Image Repository provides physicians with clinical tools for working with digital pathology to identify solutions, faster. For more information visit: www.corista.com

Association of Pathology Chairs 2013 Annual Meeting

July 9-12, 2013

Seaport Boston Hotel, Boston, Massachusetts

Kellison & Company (Booth #20)

Since 1976, the principals of Kellison & Company have specialized in providing comprehensive revenue cycle management services to Pathology practices including outreach, hospital-based AP practices, molecular labs and clinical professional component practices. Kellison's goal is to help improve cash flow, reduce administrative costs and enhance patient satisfaction. The company provides credentialing services, turning around denials and reporting options to help you monitor your current financial status, as well as to predict future trends. For more information visit: www.kellison.com

Paradigm, Inc. (Booth #5)

Paradigm is a non-profit corporation established to bring cutting-edge diagnostics and biomarker driven clinical trials to benefit cancer patients. Through Next-Gen Sequencing, and other biomarker analysis, Paradigm is able to provide information about the genomic and proteomic landscape of a patient's cancer, as well as potential therapies based on the specific characterization of the patient's tumor; thus, personalizing each patient's course of treatment. For more information visit: www.paradigmdx.org

Exhibitor Descriptions

AccuCore Group (Booth #15)

AccuCore's AccuPathology QA modules support CAP, Joint Commission, CLIA, CLSI, ADASP compliance along with Lean Six Sigma quality initiatives. Pathology Peer Review Automation Module - Working with your LIS to identify, assign cases, gathering meaningful details while improving quality through automation. Professional, Technical and Administrative Staff Management and Evaluation Module - Optimize staff, managing human resources, maintaining CA and Professional OPPE/FPPE compliance. Process Tracking Module - Proactively manage processes, workloads and activities improving operations to manage-by-exception. Lab Equipment and Material Management Module - Proactively manage, maintain and validate equipment and material used in the lab to mandated standards while reducing manual effort. Lab Incident/Occurrence Management Module - Track, manage and avoid pathology related deviations and incidents. General Key Features - LIS integration with dashboards, alerts, standardized reports along with browser and tablet support. For more information visit: www.accucoregroup.com

American Pathology Foundation (Booth #11)

The American Pathology Foundation (APF) is a professional society devoted to the business and management of pathology. Founded in 1959, the Foundation focuses on providing quality educational programs and management resources for members to help them stay current with scientific, regulatory, and marketplace developments affecting the practice of pathology. APF membership is inclusive of pathologists, practice managers, pathology residents, and academic programs. For more information visit: www.apfconnect.org

APS Medical Billing (Booth #12)

APS Medical Billing is a premier pathology billing company that continues to provide expert billing and practice management solutions to pathology practices nationwide. Since 1960, APS has grown and currently provides services for over 120 pathology practices in over 250 sites. Some of the services provided include expert ICD-9 and CPT coding, contract management, and comprehensive charge capture system to ensure our client's success. For more information visit: www.apsmesbill.com.

The Dark Report (Booth #9)

For almost two decades, The Dark Report has provided high-level business intelligence and lab management innovations exclusively for senior lab administrators, executives, and pathologists. Widely-respected, it has won national awards for editorial and reporting excellence. The Dark Report delivers timely insights and trend analysis specifically designed to inform lab leaders and help them craft the management strategies that keep their lab organizations at the leading edge of clinical services in a financially-sustainable manner. For more information visit: www.darkreport.com

Association of Pathology Chairs 2013 Annual Meeting

July 9-12, 2013

Seaport Boston Hotel, Boston, Massachusetts

Lippincott Williams & Wilkins/Wolters Kluwer Health (Booth #16)

Lippincott Williams & Wilkins, a Wolters Kluwer Health company, is a leading international publisher of medical books, journals, and electronic media. We proudly offer specialized publications and software for physicians, nurses, students and clinicians. Please visit our booth to browse our comprehensive product line.

For more information visit: www.lww.com

McKesson (Booth #7)

McKesson Business Performance Services is an experienced provider of healthcare management, medical billing and technology services for hospitals, health systems, physicians and other valued healthcare stakeholders nationwide. We offer a comprehensive portfolio of revenue cycle solutions, practice management services, and advanced technology to help our clients achieve better business health.

For more information visit: www.mckesson.com

MedData (Booth #14)

MedData is among the nation's leading providers of Pathology revenue cycle management services including billing, coding, collections and patient satisfaction. MedData has over 30 years of pathology experience with 8 million pathology encounters each year, and currently provides services to 3,000 physicians at 700 facilities across 40 states.

For more information visit: www.meddata.com

MOPEC, Inc. (Booth #13)

MOPEC – The Better Product People. Mopec furnishes products and equipment for Pathology. Our superior products include Grossing Workstations, Ventilated Tissue Storage Cabinets, Specimen Transport Systems, Paraffin Pots, SmartSpecimen scale and a wide variety of laboratory equipment and supplies. Mopec provides consulting, manufacturing and installation of Histology and Pathology equipment.

For more information visit: www.mopec.com

NovoPath, Inc. (Booth #17)

NovoPath™, a comprehensive, easy to use, cost affordable, Anatomic Pathology Information Software System, includes features for managing and resulting Surgical, Cytology, Derm, Molecular and Autopsy specimens. Image capture, organ maps, synoptic reporting, bar coding capability, slide loaner and tracking, advanced security, Pathologist / Histologist work lists, discrete data retrieval and full connectivity to EMRs, HIS and LIS with Android and iPhone Report Delivery are a few features. Certified as an EMR Module, NovoPath™ v8.0 offers dedicated Flow Cytometry and Cytogenetic Testing, Lean Process Mgt / Specimen Tracking Modules and Touch Screen Cytology with over 125 pathology management reports.

For more information visit: www.novopath.com

Sakura Finetek USA, Inc. (Booth #3)

Sakura Finetek USA, Inc., introduces a hybrid digital microscope/scanner, Sakura® VisionTek™, into its line of products that includes the renowned Tissue-Tek® and Cyto-Tek® brands. It is the ideal tool to manage daily workload while significantly impacting patient care and your business. Sakura® VisionTek™ provides pathologists with the control and choices needed in the digital age. Please come by our exhibit to see Sakura® VisionTek™.

For more information visit: www.sakuraus.com

Spot Imaging Solutions (Booth #6)

SPOT Imaging Solutions is a manufacturer of imaging systems for pathology. SPOT digital cameras for microscopes are well known for quality publication and documentation images. SPOT PathStand™ and PathStation™ macro imaging systems make image capture easy in the grossing room. All imaging systems include software that provides on-screen preview, annotation, teleconferencing, measurement, reporting and LIS integration with a simple interface.

For more information visit: www.spotimaging.com/pathology

Association of Pathology Chairs 2013 Annual Meeting

July 9-12, 2013

Seaport Boston Hotel, Boston, Massachusetts

Vachette Pathology (Booth #10)

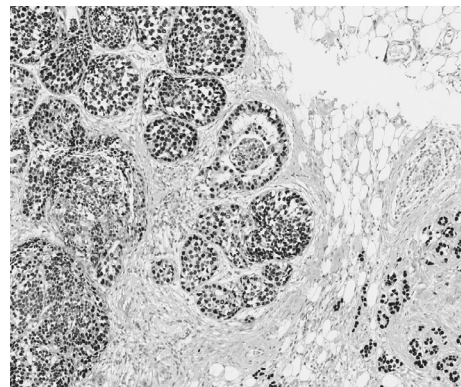
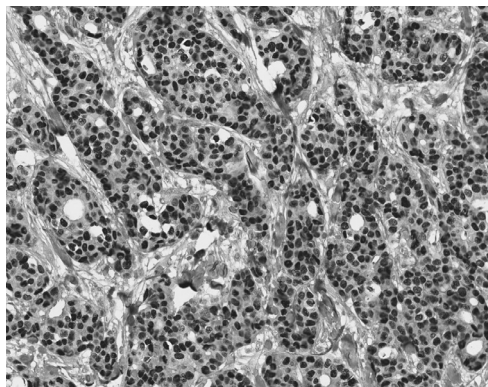
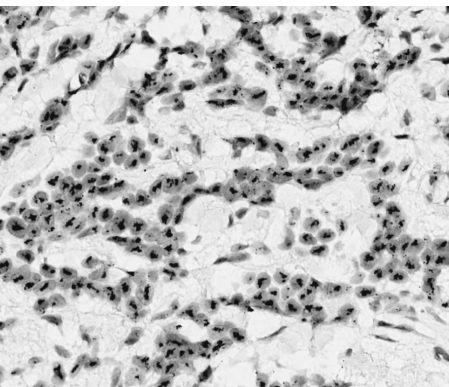
"Who's Watching Your Wallet?" Many pathologists and laboratories are suffering from a simple lack of revenue management. Vachette Pathology is a practice management and consulting firm that can help to increase your revenue and secure your income. To discover how Vachette can help your practice, visit www.vachettepathology.com or contact Mick Raich at 866-407-0763.

Voicebrook (Booth #8)

Voicebrook is the leading provider of speech recognition and digital dictation solutions in Pathology. VoiceOver® software integrates with all major Anatomic Pathology systems and extends beyond core Dragon Medical® solutions and can be deployed as an upgrade to a Dragon implementation, allowing sites to protect initial investments, and realize the full potential of speech recognition and complementary workflow technologies.

For more information visit: www.voicebrook.com

Helping patients.
Helping you.



Our focus is your **patient.**

www.aruplab.com/oncology

ARUP's oncology test menu offers a wide variety of testing designed to answer important clinical questions regarding diagnosis and prognosis, monitoring, pharmacogenomics, and therapeutic triage of malignancies.

Named by G-2 Reports' *U.S. Laboratory Reference Testing Market Profile & Pricing Trends 2012* as Best Value for National Reference Laboratory (defined as service plus price).

follow us!



For more information about ARUP and our oncology test offerings, visit:

www.aruplab.com/oncology

OUR ONCOLOGY SERVICES NOW INCLUDE:

HER2 by Dual-ISH
Solid Tumor Mutation Panel by NGS
ALK (D5F3) by IHC
Circulating Tumor Cell (CTC) Count

AVAILABLE SUMMER 2013:

ROS1 by IHC with FISH Confirmation
T-Cell Receptor Gamma (*TCRG*) Clonality by NGS
BCR-ABL1 Mutation Analysis by NGS

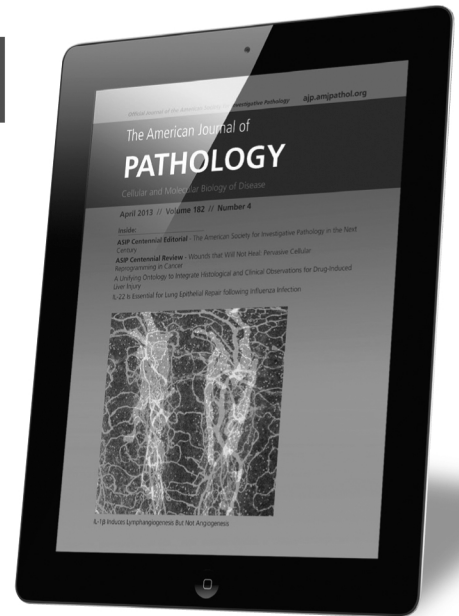
ARUP LABORATORIES
Together We Get Better Results™

Rather than competing with its clients for physician office business, ARUP chooses instead to support clients' existing test menus by offering highly complex and unique lab tests, with accompanying consultative support, to enhance their abilities to provide laboratory services.



THE AMERICAN JOURNAL OF PATHOLOGY

Cellular and Molecular Biology of Disease



iPAD APP NOW AVAILABLE!

The American Journal of Pathology is becoming more accessible than ever by launching the highly anticipated *The American Journal of Pathology* iPad App!

The American Journal of Pathology App is NOW available to download at the iPad App store

www.journals.elsevierhealth.com/periodicals/ajpa/content/mobileaccessinstructions

*iPad™ is a trademark of Apple Inc. registered in the U.S. and other countries

ajp.amjpathol.org

The American Journal of Pathology

Association of Pathology Chairs 2013 Annual Meeting

July 9-12, 2013

Seaport Boston Hotel, Boston, Massachusetts

APC CHAIRS PROGRAM

Tuesday, July 9, 2013

GENERAL INFORMATION:

2:00 pm – 3:00 pm

Pre-Meeting Workshop Sign-In

Cityview Foyer, Plaza Level, Seaport World Trade Center

6:00 pm - 9:00 pm

Meeting Registration

Harborview Foyer, Plaza Level, Seaport World Trade Center

6:00 pm - 9:00 pm

Exhibit Hours

Harborview Ballroom, Plaza Level, Seaport World Trade Center

PROGRAM INFORMATION:

3:00 pm - 6:00 pm

Pre-Meeting Workshop (Co-Sponsored by the College of American Pathologists and the Association of Pathology Chairs)

Live or Let Die: Clinical Informatics as a Transformative Discipline for Pathologists in the New Era of Value-Based Health

Cityview Ballroom, Plaza Level, Seaport World Trade Center

Accountable Care Organizations, bundled payment, and value based purchasing are emerging health care fiscal reforms. While pathology and clinical laboratory services account for less than 5% of health plan costs, their effect on clinical care is far greater. Clinical informatics will be crucial for making data-driven decisions in these new health care models. By taking ownership of clinical informatics within their organizations, attendees will be able to more effectively demonstrate their professional value, and be better prepared to drive improvements in clinical quality and cost management. Via relevant use cases, attendees will learn the concepts necessary to demonstrate leadership in clinical informatics working with teams of colleagues, clinicians, analysts and informaticists.

Objectives:

You will learn to:

- Understand who owns the data (e.g., providers, payers, and patients) and why.
- Articulate the What (e.g., diagnostic, claims), Where (e.g., databases) and When (e.g., update frequency) of clinical and financial health care data.
- Apply basic clinical informatics concepts to relevant use cases to facilitate data-driven decisions and to negotiate participation in a value-based health care model.

3:00 pm – 3:05 pm

Welcome and opening remarks

Donald Karcher, MD, The George Washington University School of Medicine

Association of Pathology Chairs 2013 Annual Meeting

July 9-12, 2013

Seaport Boston Hotel & World Trade Center, Boston, Massachusetts

- | | |
|-------------------|--|
| 3:05 pm – 3:15 pm | The Big Picture: How a pathologist fits into the new value-based marketplace
<i>James Crawford, MD, PhD, Hofstra NorthShore Long Island Jewish School of Medicine</i> |
| 3:15 pm – 3:30 pm | Data content and use in Healthcare
<i>James Crawford, MD, PhD, Hofstra NorthShore Long Island Jewish School of Medicine</i> |
| 3:30 pm – 3:45 pm | Leveraging data for the new marketplace
<i>James Crawford, MD, PhD, Hofstra NorthShore Long Island Jewish School of Medicine</i> |
| 3:45 pm – 3:55 pm | The skill sets required of Pathologists for the new marketplace
<i>James Crawford, MD, PhD, Hofstra NorthShore Long Island Jewish School of Medicine</i> |
| 3:55 pm – 4:05 pm | Q & A Session
<i>James Crawford, MD, PhD, Hofstra NorthShore Long Island Jewish School of Medicine</i> |
| 4:05 pm – 4:20 pm | Break (in-room) |
| 4:20 pm – 4:30 pm | Stakeholders and market demands in a value-based marketplace
<i>Philip Chen, MD, PhD, University of Miami</i> |
| 4:30 pm – 4:40 pm | Using financial and clinical informatics
<i>Philip Chen, MD, PhD, University of Miami</i> |
| 4:40 pm – 4:50 pm | The importance of use cases in demonstrating value
<i>Philip Chen, MD, PhD, University of Miami</i> |
| 4:50 pm – 5:00 pm | How to survive and prosper in a value-based environment
<i>Philip Chen, MD, PhD, University of Miami</i> |
| 5:00 pm – 5:10 pm | Q & A Session
<i>Philip Chen, MD, PhD, University of Miami</i> |
| 5:10 pm – 5:15 pm | Using clinical informatics to provide predictive support
<i>Frank Elevitch, MD, Health Care Engineering</i> |
| 5:15 pm – 5:25 pm | How to structure data domains
<i>Frank Elevitch, MD, Health Care Engineering</i> |
| 5:25 pm – 5:35 pm | The pitfalls of querying databases
<i>Frank Elevitch, MD, Health Care Engineering</i> |
| 5:35 pm – 5:50 pm | Modeling a value-based health care contract
<i>Frank Elevitch, MD, Health Care Engineering</i> |

Association of Pathology Chairs 2013 Annual Meeting

July 9-12, 2013

Seaport Boston Hotel & World Trade Center, Boston, Massachusetts

5:50 pm – 6:00 pm Q & A Session
Frank Elevitch, MD, Health Care Engineering

6:00 pm - 9:00 pm **Reception, Exhibits**
[This is not a Continuing Medical Education activity]
Harborview Ballroom, Plaza Level, Seaport World Trade Center

Wednesday, July 10, 2013

GENERAL INFORMATION:

7:00 am - 6:00 pm **Meeting Registration**
Harborview Foyer, Plaza Level, Seaport World Trade Center

7:00 am - 6:00 pm **Exhibit Hours**
Harborview Ballroom, Plaza Level, Seaport World Trade Center

9:00 am - 10:00 am **SPICE (Spouse and Guest) Refreshments & Event Launch**
Today's Event: Old Time Trolley Tour of Boston
Tamo Loft, Lobby Level, Seaport Boston Hotel

PROGRAM INFORMATION:

7:00 am - 8:00 am **Breakfast, Exhibits**
[This is not a Continuing Medical Education activity]
Harborview Ballroom, Plaza Level, Seaport World Trade Center

8:00 am - 11:00 am **Joint Chairs/PRODS/UMEDS/PDAS/GMEAS Session**
Amphitheater, Mezzanine Level, Seaport World Trade Center

Primer on Health Care Financing, Health Care Payment and Delivery Models, and Health Care Delivery Management for Pathologists
Moderator: Donald Karcher, MD, The George Washington University

8:00 am - 8:10 am The history of health care financing – from accounting to accountability
Stephen Black-Schaffer, MD, Massachusetts General Hospital

8:10 am - 8:15 am Health care and the Federal budget
Stephen Black-Schaffer, MD, Massachusetts General Hospital

8:15 am - 9:00 am Health care payment models
Stephen Black-Schaffer, MD, Massachusetts General Hospital

9:00 am - 9:15 am Q & A Session

9:15 am - 9:45 am **Break, Exhibits**
[This is not a Continuing Medical Education activity]
Harborview Ballroom, Plaza Level, Seaport World Trade Center

Association of Pathology Chairs 2013 Annual Meeting

July 9-12, 2013

Seaport Boston Hotel & World Trade Center, Boston, Massachusetts

- 9:45 am - 9:50 am Fundamentals of health care delivery
James Crawford, MD, PhD, Hofstra NorthShore Long Island Jewish School of Medicine
- 9:50 am - 10:35 am Health care delivery models over the years
James Crawford, MD, PhD, Hofstra NorthShore Long Island Jewish School of Medicine
- 10:35 am - 10:50 am The changing landscape in market competitions
Philip Chen, MD, PhD, University of Miami
- 10:50 am - 11:00 am Financial positioning and maneuvering in the new era of value-based health care delivery
Philip Chen, MD, PhD, University of Miami
- 11:00 am -11:15 am Q & A Session
- 11:15 am - 12:30 pm** **Joint Chairs/PRODS/UMEDS/PDAS/GMEAS Award Lunch**
[This is not a Continuing Medical Education activity]
Waterfront Ballroom, Harbor Level, Seaport World Trade Center
- 11:30 am - 11:35 am Welcome, Moment of Silence
Ann Thor, MD, University of Colorado, Denver
- 11:35 am - 11:40 am Michelle Raible Distinguished Teaching Award Presentation
Kenneth Klein, MD, University of Medicine and Dentistry of New Jersey
- 11:40 am - 11:45 am Graduate Medical Education Distinguished Teaching Award Presentation
Margaret Grimes, MD, MEd, Virginia Commonwealth University
- 11:45 am - 11:55 am Distinguished Service Award Presentation
Avrum I. Gotlieb, MD, FRCPC, University of Toronto
- 11:55 am - 12:05 pm Friends of Pathology Award Presentation
Mark E. Sobel, MD, PhD, American Society for Investigative Pathology
- 12:05 pm - 12:25 pm Archive Team Review of the APC History Project
Fred Gorstein, MD, Thomas Jefferson University
Mary F. Lipscomb, MD, University of New Mexico
- 12:30 pm - 2:30 pm** **Joint Chairs/PRODS/UMEDS/GMEAS Session**
Amphitheater, Mezzanine Level, Seaport World Trade Center
- The “new” roles for pathologists in the era of accountable/coordinated and patient-centered care**
Moderator: Thomas Wheeler, MD, Baylor College of Medicine
- 12:30 pm - 12:45 pm Pathology service models for the value-based health care system:
Molecular, informatics, population and patient-centered care
L. Eleanor J. Herriman, MD, MBA, Managing Director, G-2 Intelligence

Association of Pathology Chairs 2013 Annual Meeting

July 9-12, 2013

Seaport Boston Hotel & World Trade Center, Boston, Massachusetts

- 12:45 pm - 1:00 pm Laboratory test utilization management
Conrad Schuerch, MD, Geisinger Health System
- 1:00 pm - 1:15 pm Clinical decision support, laboratory test consultation
Mary Zutter, MD, Vanderbilt University
- 1:15 pm - 1:30 pm Managing pathology data in the electronic health record: The critical need
for experts in pathology informatics
Alexis Carter, MD, Emory University
- 1:30 pm - 1:50 pm Evolution of the residency curriculum and training milestones to prepare
residents for these “new” roles
Robert Hoffman, MD, PhD, Vanderbilt University
- 1:50 pm - 2:10 pm Teaching medical students about the evolving role of pathology and the
“new” pathologist in accountable/coordinated and patient-centered care:
Improving care and increasing recruitment of students into pathology
Mara Rendi, MD, PhD, University of Washington
- 2:10 pm - 2:30 pm Panel Discussion / Q & A Session
- 2:30 pm - 3:00 pm** **Break, Exhibits**
[This is not a Continuing Medical Education activity]
Harborview Ballroom, Plaza Level, Seaport World Trade Center
- 3:00 pm - 5:00 pm** **Pathology and Clinical Outcomes Research Session**
Amphitheater, Mezzanine Level, Seaport World Trade Center
Moderator: Brian Smith, MD, Yale University
- 3:00 pm - 3:25 pm Academic medicine and outcomes research: research paradigms and
funding opportunities
*Ann Bonham, PhD, Chief Scientific Officer, Association of American Medical
Colleges*
- 3:25 pm - 3:50 pm Pathologists and laboratory diagnostic algorithms: Increasing overall
effectiveness and improving outcomes
Michael Laposata, MD, PhD, Vanderbilt University
- 3:50 pm - 4:15 pm Academic biobanking: Overview, opportunities and challenges
Rajiv Dhir, MBBS, MBA, University of Pittsburgh Medical Center, Shadyside
- 4:15 pm - 4:40 pm Rapid pathogen identification and antimicrobial stewardship associated
with decreased hospital costs
James M. Musser, MD, PhD, The Methodist Hospital System
- 4:40 pm - 5:00 pm Q & A Session
- 5:00 pm - 6:00 pm** **Break, Exhibits**
[This is not a Continuing Medical Education activity]
Harborview Ballroom, Plaza Level, Seaport World Trade Center

Association of Pathology Chairs 2013 Annual Meeting

July 9-12, 2013

Seaport Boston Hotel & World Trade Center, Boston, Massachusetts

6:00 pm - 9:00 pm **Opening Dinner Cruise (Tickets Required)**
[This is not a Continuing Medical Education activity]
Launch from Seaport Boston Dock (promptly at 7:00 pm)

Thursday, July 11, 2013

GENERAL INFORMATION:

7:00 am - 4:00 pm **Meeting Registration**
Harborview Foyer, Plaza Level, Seaport World Trade Center

7:00 am - 4:00 pm **Exhibit Hours**
Harborview Ballroom, Plaza Level, Seaport World Trade Center

9:00 am - 10:00 am **SPICE (Spouse and Guest) Refreshments & Event Launch**
Today's Event: Museum of Fine Arts Tour

4:00 pm - 5:00 pm **SPICE Refreshments & Book Club: *Caleb's Crossing* by Geraldine Brooks**
Tamo Loft, Lobby Level, Seaport Boston Hotel

PROGRAM INFORMATION:

7:00 am - 8:00 am **Breakfast, Exhibits**
Harborview Ballroom, Plaza Level, Seaport World Trade Center

8:00 am - 10:00 am **Joint Chairs/PDAS Session**
Amphitheater, Mezzanine Level, Seaport World Trade Center
Moderator: Barbara Ducatman, MD, West Virginia University

8:00 am - 8:10 am Demonstrating the value of pathologists in accountable/coordinated and patient-centered care – the national perspective
James Crawford, MD, PhD, Hofstra NorthShore Long Island Jewish School of Medicine

8:10 am - 8:25 am Demonstrating the value of pathologists in accountable/coordinated and patient-centered care – “real world” example
Robert Hunter, MD, PhD, University of Texas, Houston

8:25 am - 8:50 am Prospects for payment – pathology practice in the budgeted health care arena
Stephen Black-Schaffer, MD, Massachusetts General Hospital

8:50 am - 9:15 am Linking clinical and financial performance in negotiation for care delivery payments
Philip Chen, MD, PhD, University of Miami

9:15 am - 9:40 am Competing in the clinical laboratory and anatomic pathology marketplace in the era of accountable/coordinated care
Michael Prystowsky, MD, PhD, Albert Einstein College of Medicine

9:40 am - 10:00 am Q & A Session

Association of Pathology Chairs 2013 Annual Meeting

July 9-12, 2013

Seaport Boston Hotel & World Trade Center, Boston, Massachusetts

- 10:00 am - 10:30 am** **Break, Exhibits**
[This is not a Continuing Medical Education activity]
Harborview Ballroom, Plaza Level, Seaport World Trade Center
- 10:30 am - 12:30 pm** **Joint Advocacy Session (Chairs/PRODS/PDAS/UMEDS)**
Amphitheater, Mezzanine Level, Seaport World Trade Center
Moderators: Daniel Remick, MD, Boston University; Dani Zander, MD, Penn State University
- 10:30 am - 11:15 am Keynote: Health care reform and the revolution in health care delivery, payment systems, and the American Medical Association
James Madara, MD, Executive Vice President and Chief Executive Officer, American Medical Association
- 11:15 am - 11:25 am Keynote Q & A Session
- Responses to keynote from Pathology Roundtable representatives:
- 11:25 am - 11:30 am ABP Representative
Rebecca L. Johnson, MD, The American Board of Pathology
- 11:30 am - 11:35 am ACLPS Representative
Robinna G. Lorenz, MD, PhD, University of Alabama, Birmingham
- 11:35 am - 11:40 am ASCP Representative
Steven H. Kroft, MD, Medical College of Wisconsin
- 11:40 am - 11:45 am ASIP Representative
James M. Musser, MD, PhD, The Methodist Hospital System
- 11:45 am - 11:50 am ADASP Representative
Peter Humphrey, MD, PhD, Washington University
- 11:50 am - 11:55 am CAP Representative
Stanley Robboy, MD, FFPATH RCPI (hon), Duke University
- 11:55 am – 12:00 pm USCAP Representative
Jeffrey Myers, MD, University of Michigan
- 12:00 pm - 12:30 pm Panel Discussion / Q & A Session
- 12:30 pm - 2:00 pm** **Lunch Discussion Groups**
- Workforce Issues in Pathology and Laboratory Medicine**
Seaport World Trade Center
- 12:30 pm - 2:00 pm Discussion Group #1 (UME) – Waterfront Ballroom I, Harbor Level
Recruitment of students into pathology: Keeping pathology practice visible in the integrated curriculum
Margret Magid, MD, Icahn School of Medicine at Mount Sinai
Barbarajean Magnani, PhD, MD, Tufts Medical Center
Michael Prystowsky, MD, PhD, Albert Einstein College of Medicine

Association of Pathology Chairs 2013 Annual Meeting

July 9-12, 2013

Seaport Boston Hotel & World Trade Center, Boston, Massachusetts

- 12:30 pm - 2:00 pm Discussion Group #2 (GME) – Cambridge Room I, Harbor Level
Preserving pathology residency and fellowship training programs
Rebecca Johnson, MD, The American Board of Pathology
Peter Kragel, MD, East Carolina University
Suzanne Powell, MD, The Methodist Hospital System
- 12:30 pm - 2:00 pm Discussion Group #3 (GME, UME) – Cityview Ballroom, Plaza Level
Training pathologists with the right skill-set for the future: Appropriate curriculum, appropriate milestones
Richard Conran, MD, PhD, JD, Uniformed Services University of the Health Sciences
Robert Hoffman, MD, PhD, Vanderbilt University
Wesley Naritoku, MD, PhD, University of Southern California
- 12:30 pm - 2:00 pm Discussion Group #4 (GME) – Waterfront Ballroom II, Harbor Level
The ACGME “Next” Accreditation System: Maintaining accreditation into the future
C. Bruce Alexander, MD, University of Alabama, Birmingham
Steven Nestler, PhD, Accreditation Council for Graduate Medical Education
- 12:30 pm - 2:00 pm Discussion Group #5 (P&M) – Waterfront Ballroom III, Harbor Level
Academic pathology in the re-tooling of practicing pathologists for emerging new roles
David Booker, MD, Laboratory Practice, PC; Trinity Hospital of Augusta
Barbara Ducatman, MD, West Virginia University
- 12:30 pm - 2:00 pm Discussion Group #6 (P&M, GME, UME) – Skyline Room, Plaza Level
The role of academic pathology in building and maintaining the technical laboratory workforce of the future
Beverly Kirby, MA, EdD, West Virginia University
Steven H. Kroft, MD, Medical College of Wisconsin
- 12:30 pm - 2:00 pm Discussion Group #7 (Research, P&M) – North End Room, Plaza Level
Creating the workforce for clinical outcomes/clinical services research in pathology and laboratory medicine
Jennifer Hunt, MD, MEd, University of Arkansas for Medical Sciences
Michael Laposata, MD, PhD, Vanderbilt University
- 12:30 pm - 2:00 pm Discussion Group #8 (Research, GME) – South End Room, Plaza Level
Supporting and sustaining the pathology research workforce
Jeffrey Golden, MD, Brigham & Women’s Hospital
Brian Smith, MD, Yale University
- 2:00 pm - 2:30 pm** **Break, Exhibits**
[This is not a Continuing Medical Education activity]
Harborview Ballroom, Plaza Level, Seaport World Trade Center

Association of Pathology Chairs 2013 Annual Meeting

July 9-12, 2013

Seaport Boston Hotel & World Trade Center, Boston, Massachusetts

2:30 pm - 4:00 pm

APC (Chairs) Committee Meetings

Graduate Medical Education Committee
Waterfront Ballroom I, Harbor Level, Seaport World Trade Center
Chair – Peter Kragel, MD, East Carolina University

Practice & Management Committee
Waterfront Ballroom III, Harbor Level, Seaport World Trade Center
Chair – Barbara Ducatman, MD, West Virginia University

Research Committee
Waterfront Ballroom II, Harbor Level, Seaport World Trade Center
Chair – Brian Smith, MD, Yale University

Undergraduate Medical Education Committee
Cambridge Room I, Harbor Level, Seaport World Trade Center
Chair – Michael Prystowsky, MD, PhD, Albert Einstein College of Medicine

2:30 pm - 4:30 pm

Pathology Roundtable Meeting (Invitation Only)

[This is not a Continuing Medical Education activity]
Skyline Room, Plaza Level, Seaport World Trade Center

4:30 pm - 6:00 pm

Women Chairs Reception

[This is not a Continuing Medical Education activity]
Hospitality Suite (Room 535/536), Seaport Boston Hotel

6:00 pm - 8:00 pm

Advocacy Committee Meeting, Dinner (Invitation Only)

[This is not a Continuing Medical Education activity]
Magnum Room A, Tamo Restaurant, Lobby Level, Seaport Boston Hotel

Friday, July 12, 2013

GENERAL INFORMATION:

7:00 am - 8:30 am

Breakfast

Harborview Foyer, Plaza Level, Seaport World Trade Center

PROGRAM INFORMATION:

7:30 am - 8:30 am

Leadership Development & Diversity Ad Hoc Committee Session

Harborview Ballroom, Plaza Level, Seaport World Trade Center

7:30 am - 7:35 am

Welcome, opening remarks
Ann Thor, MD, University of Colorado, Denver

7:35 am - 8:00 am

Embracing diversity and gender as a transformative tool in academic medicine
Patricia A. Thomas, MD, MA, The University of Kansas

8:00 am - 8:20 am

Career development: Where best intentions and gender bias collide
Ann Thor, MD, University of Colorado, Denver

Association of Pathology Chairs 2013 Annual Meeting

July 9-12, 2013

Seaport Boston Hotel & World Trade Center, Boston, Massachusetts

8:20 am - 8:30 am Leadership Development & Diversity Session Q & A Session

8:30 am - 10:00 am

Benchmarking Academic Pathologists

Harborview Ballroom, Plaza Level, Seaport World Trade Center

8:30 am - 8:50 am

2012 APC Survey Data Review

Barbara Ducatman, MD, West Virginia University

8:50 am - 9:10 am

Benchmarking: The BU Experience

Daniel Remick, MD, Boston University

9:10 am - 9:30 am

Benchmarking clinical pathologists at VCU

David Wilkinson, MD, Medical College of Virginia

9:30 am - 9:50 am

Benchmarking pathology faculty academic productivity

J. Charles Jennette, MD, University of North Carolina, Chapel Hill

9:50 am - 10:00 am

Panel Discussion / Q & A Session

10:00 am – 10:15 am

Break, Prize Drawing

[This is not a Continuing Medical Education activity]

Harborview Foyer, Plaza Level, Seaport World Trade Center

10:15 am - 11:45 am

Pathology Workforce Session

Harborview Ballroom, Plaza Level, Seaport World Trade Center

Moderator: Donald Karcher, MD, The George Washington University

10:15 am – 10:35 am

The Evolving Pathologist Workforce

Richard Friedberg, MD, PhD, Baystate Medical Center

10:35 am – 10:55 am

The Essential Laboratory Technical Workforce

Steven H. Kroft, MD, Medical College of Wisconsin

10:55 am – 11:15 am

The Effective Pathology Research Workforce

James M. Musser, MD, PhD, The Methodist Hospital System

11:15 am – 11:45 am

Panel Discussion / Q & A Session

11:45 am - 12:45 pm

Chairs Business Meeting, Lunch

[This is not a Continuing Medical Education activity]

Harborview Ballroom, Plaza Level, Seaport World Trade Center

Chairs Program Adjourns at 12:45 pm

PRODS PROGRAM

Association of Pathology Chairs 2013 Annual Meeting
July 9-12, 2013
Seaport Boston Hotel & World Trade Center, Boston, Massachusetts
PRODS PROGRAM

Tuesday, July 9, 2013

GENERAL INFORMATION:

2:00 pm - 3:00 pm

Pre-Meeting Workshop Sign-In

Cityview Foyer, Plaza Level, Seaport World Trade Center

6:00 pm - 9:00 pm

Meeting Registration

Harborview Foyer, Plaza Level, Seaport World Trade Center

6:00 pm - 9:00 pm

Exhibit Hours

Harborview Ballroom, Plaza Level, Seaport World Trade Center

PROGRAM INFORMATION:

3:00 pm - 6:00 pm

Pre-Meeting Workshop (Co-Sponsored by the College of American Pathologists and the Association of Pathology Chairs)

Live or Let Die: Clinical Informatics as a Transformative Discipline for Pathologists in the New Era of Value-Based Health

Cityview Ballroom, Plaza Level, Seaport World Trade Center

Accountable Care Organizations, bundled payment, and value based purchasing are emerging health care fiscal reforms. While pathology and clinical laboratory services account for less than 5% of health plan costs, their effect on clinical care is far greater. Clinical informatics will be crucial for making data-driven decisions in these new health care models. By taking ownership of clinical informatics within their organizations, attendees will be able to more effectively demonstrate their professional value, and be better prepared to drive improvements in clinical quality and cost management. Via relevant use cases, attendees will learn the concepts necessary to demonstrate leadership in clinical informatics working with teams of colleagues, clinicians, analysts and informaticists.

Objectives:

You will learn to:

- Understand who owns the data (e.g., providers, payers, and patients) and why.
- Articulate the What (e.g., diagnostic, claims), Where (e.g., databases) and When (e.g., update frequency) of clinical and financial health care data.
- Apply basic clinical informatics concepts to relevant use cases to facilitate data-driven decisions and to negotiate participation in a value-based health care model.

3:00 pm – 3:05 pm

Welcome and opening remarks

Donald Karcher, MD, The George Washington University School of Medicine

Association of Pathology Chairs 2013 Annual Meeting

July 9-12, 2013

Seaport Boston Hotel & World Trade Center, Boston, Massachusetts

- | | |
|-------------------|--|
| 3:05 pm – 3:15 pm | The Big Picture: How a pathologist fits into the new value-based marketplace
<i>James Crawford, MD, PhD, Hofstra NorthShore Long Island Jewish School of Medicine</i> |
| 3:15 pm – 3:30 pm | Data content and use in Healthcare
<i>James Crawford, MD, PhD, Hofstra NorthShore Long Island Jewish School of Medicine</i> |
| 3:30 pm – 3:45 pm | Leveraging data for the new marketplace
<i>James Crawford, MD, PhD, Hofstra NorthShore Long Island Jewish School of Medicine</i> |
| 3:45 pm – 3:55 pm | The skill sets required of Pathologists for the new marketplace
<i>James Crawford, MD, PhD, Hofstra NorthShore Long Island Jewish School of Medicine</i> |
| 3:55 pm – 4:05 pm | Q & A Session
<i>James Crawford, MD, PhD, Hofstra NorthShore Long Island Jewish School of Medicine</i> |
| 4:05 pm – 4:20 pm | Break (in-room) |
| 4:20 pm – 4:30 pm | Stakeholders and market demands in a value-based marketplace
<i>Philip Chen, MD, PhD, University of Miami</i> |
| 4:30 pm – 4:40 pm | Using financial and clinical informatics
<i>Philip Chen, MD, PhD, University of Miami</i> |
| 4:40 pm – 4:50 pm | The importance of use cases in demonstrating value
<i>Philip Chen, MD, PhD, University of Miami</i> |
| 4:50 pm – 5:00 pm | How to survive and prosper in a value-based environment
<i>Philip Chen, MD, PhD, University of Miami</i> |
| 5:00 pm – 5:10 pm | Q & A Session
<i>Philip Chen, MD, PhD, University of Miami</i> |
| 5:10 pm – 5:15 pm | Using clinical informatics to provide predictive support
<i>Frank Elevitch, MD, Health Care Engineering</i> |
| 5:15 pm – 5:25 pm | How to structure data domains
<i>Frank Elevitch, MD, Health Care Engineering</i> |
| 5:25 pm – 5:35 pm | The pitfalls of querying databases
<i>Frank Elevitch, MD, Health Care Engineering</i> |
| 5:35 pm – 5:50 pm | Modeling a value-based health care contract
<i>Frank Elevitch, MD, Health Care Engineering</i> |

Association of Pathology Chairs 2013 Annual Meeting

July 9-12, 2013

Seaport Boston Hotel & World Trade Center, Boston, Massachusetts

5:50 pm – 6:00 pm Q & A Session
Frank Elevitch, MD, Health Care Engineering

6:00 pm - 9:00 pm **Reception, Exhibits**
[This is not a Continuing Medical Education activity]
Harborview Ballroom, Plaza Level, Seaport World Trade Center

Wednesday, July 10, 2013

GENERAL INFORMATION:

7:00 am - 6:00 pm **Meeting Registration**
Harborview Foyer, Plaza Level, Seaport World Trade Center

7:00 am - 6:00 pm **Exhibit Hours**
Harborview Ballroom, Plaza Level, Seaport World Trade Center

9:00 am - 10:00 am **SPICE (Spouse and Guest) Refreshments & Event Launch**
Today's Event: Old Time Trolley Tour of Boston
Tamo Loft, Lobby Level, Seaport Boston Hotel

PROGRAM INFORMATION:

7:00 am - 8:00 am **Breakfast, Exhibits**
[This is not a Continuing Medical Education activity]
Harborview Ballroom, Plaza Level, Seaport World Trade Center

8:00 am - 11:00 am **Joint Chairs/PRODS/UMEDS/PDAS/GMEAS Session**

Primer on Health Care Financing, Health Care Payment and Delivery Models, and Health Care Delivery Management for Pathologists
Amphitheater, Mezzanine Level, Seaport World Trade Center
Moderator: Donald Karcher, MD, The George Washington University

8:00 am - 8:10 am The history of health care financing – from accounting to accountability
Stephen Black-Schaffer, MD, Massachusetts General Hospital

8:10 am - 8:15 am Health care and the Federal budget
Stephen Black-Schaffer, MD, Massachusetts General Hospital

8:15 am - 9:00 am Health care payment models
Stephen Black-Schaffer, MD, Massachusetts General Hospital

9:00 am - 9:15 am Q & A Session

9:15 am - 9:45 am **Break, Exhibits**
[This is not a Continuing Medical Education activity]
Harborview Ballroom, Plaza Level, Seaport World Trade Center

Association of Pathology Chairs 2013 Annual Meeting

July 9-12, 2013

Seaport Boston Hotel & World Trade Center, Boston, Massachusetts

- 9:45 am - 9:50 am Fundamentals of health care delivery
James Crawford, MD, PhD, Hofstra NorthShore Long Island Jewish School of Medicine
- 9:50 am - 10:35 am Health care delivery models over the years
James Crawford, MD, PhD, Hofstra NorthShore Long Island Jewish School of Medicine
- 10:35 am - 10:50 am The changing landscape in market competitions
Philip Chen, MD, PhD, University of Miami
- 10:50 am - 11:00 am Financial positioning and maneuvering in the new era of value-based health care delivery
Philip Chen, MD, PhD, University of Miami
- 11:00 am -11:15 am Q & A Session
- 11:15 am - 12:30 pm Joint Chairs/PRODS/UMEDS/PDAS/GMEAS Award Lunch**
[This is not a Continuing Medical Education activity]
Waterfront Ballroom, Harbor Level, Seaport World Trade Center
- 11:30 am - 11:35 am Welcome, Moment of Silence
Ann Thor, MD, University of Colorado, Denver
- 11:35 am - 11:40 am Michelle Raible Distinguished Teaching Award Presentation
Kenneth Klein, MD, University of Medicine and Dentistry of New Jersey
- 11:40 am - 11:45 am Graduate Medical Education Distinguished Teaching Award Presentation
Margaret Grimes, MD, MEd, Virginia Commonwealth University
- 11:45 am - 11:55 am Distinguished Service Award Presentation
Avrum I. Gotlieb, MD, FRCPC, University of Toronto
- 11:55 am - 12:05 pm Friends of Pathology Award Presentation
Mark E. Sobel, MD, PhD, American Society for Investigative Pathology
- 12:05 pm - 12:25 pm Archive Team Review of the APC History Project
Fred Gorstein, MD, Thomas Jefferson University
Mary F. Lipscomb, MD, University of New Mexico
- 12:30 pm - 2:30 pm Joint Chairs/PRODS/UMEDS/GMEAS Session**
Amphitheater, Mezzanine Level, Seaport World Trade Center
- The “new” roles for pathologists in the era of accountable/coordinated and patient-centered care**
Moderator: Thomas Wheeler, MD, Baylor College of Medicine
- 12:30 pm - 12:45 pm Pathology service models for the value-based health care system:
Molecular, informatics, population and patient-centered care
L. Eleanor J. Herriman, MD, MBA, Managing Director, G-2 Intelligence

Association of Pathology Chairs 2013 Annual Meeting

July 9-12, 2013

Seaport Boston Hotel & World Trade Center, Boston, Massachusetts

- 12:45 pm - 1:00 pm Laboratory test utilization management
Conrad Schuerch, MD, Geisinger Health System
- 1:00 pm - 1:15 pm Clinical decision support, laboratory test consultation
Mary Zutter, MD, Vanderbilt University
- 1:15 pm - 1:30 pm Managing pathology data in the electronic health record: The critical need
for experts in pathology informatics
Alexis Carter, MD, Emory University
- 1:30 pm - 1:50 pm Evolution of the residency curriculum and training milestones to prepare
residents for these “new” roles
Robert Hoffman, MD, PhD, Vanderbilt University
- 1:50 pm - 2:10 pm Teaching medical students about the evolving role of pathology and the
“new” pathologist in accountable/coordinated and patient-centered care:
Improving care and increasing recruitment of students into pathology
Mara Rendi, MD, PhD, University of Washington
- 2:10 pm - 2:30 pm Panel Discussion / Q & A Session
- 2:30 pm - 3:00 pm Break, Exhibits**
[This is not a Continuing Medical Education activity]
Harborview Ballroom, Plaza Level, Seaport World Trade Center
- 3:00 pm - 5:30 pm PRODS/UMEDS/GMEAS Joint Session: Legal Aspects of Medical Education**
Cityview Ballroom, Plaza Level, Seaport World Trade Center
- 3:00 pm - 3:45 pm Fundamentals of Academic Law and Graduate Medical Education
Jamie Padmore, MSc, Vice President, Academic Affairs, MedStar Health;
Associate Dean for Graduate Medical Education and Educational
Scholarship, Georgetown University
- 3:45 pm - 4:00 pm Q & A Session
- 4:00 pm - 4:45 pm Advanced Issues in Graduate Medical Education Remediation and Resident
Dismissals
Jamie Padmore, MSc, MedStar Health/ Georgetown University
- 4:45 pm - 5:00 pm Q & A Session
- 5:00 pm – 5:30 pm Legal Aspects of Medical Education Panel Discussion
Jamie Padmore, MSc, MedStar Health/Georgetown University
C. Bruce Alexander, MD, University of Alabama, Birmingham
Richard Conran, MD, PhD, JD, Uniformed Services University of the Health
Sciences
Allison Jones, MedStar Georgetown University Hospital
Suzanne Powell, MD, The Methodist Hospital System

Association of Pathology Chairs 2013 Annual Meeting

July 9-12, 2013

Seaport Boston Hotel & World Trade Center, Boston, Massachusetts

5:30 pm - 6:00 pm **Break, Exhibits**
[This is not a Continuing Medical Education activity]
Harborview Ballroom, Plaza Level, Seaport World Trade Center

6:00 pm - 9:00 pm **Opening Dinner Cruise (Tickets Required)**
[This is not a Continuing Medical Education activity]
Launch from Seaport Boston Dock (promptly at 7:00 pm)

Thursday, July 11, 2013

GENERAL INFORMATION:

7:00 am - 4:00 pm **Meeting Registration**
Harborview Foyer, Plaza Level, Seaport World Trade Center

7:00 am - 4:00 pm **Exhibit Hours**
Harborview Ballroom, Plaza Level, Seaport World Trade Center

9:00 am - 10:00 am **SPICE (Spouse and Guest) Refreshments & Event Launch**
Today's Event: Museum of Fine Arts Tour

4:00 pm - 5:00 pm **SPICE Refreshments & Book Club: *Caleb's Crossing* by Geraldine Brook**
Tamo Loft, Lobby Level, Seaport Boston Hotel

PROGRAM INFORMATION:

7:00 am - 8:00 am **Breakfast, Exhibits**
[This is not a Continuing Medical Education activity]
Harborview Ballroom, Plaza Level, Seaport World Trade Center

7:00 am - 8:00 am **PRODS Business Meeting**
[This is not a Continuing Medical Education activity]
Cityview Ballroom, Plaza Level, Seaport World Trade Center

8:00 am - 10:00 am **Joint *NEW* PRODS/GMEAS Session**
Cityview Ballroom, Plaza Level, Seaport World Trade Center

8:00 am - 8:30 am American Board of Pathology Report
Rebecca Johnson, MD, The American Board of Pathology

8:30 am - 9:00 am ACGME – Pathology Residency Review Committee: Introduction for new
program directors
Julia Iezzoni, MD, Chair, RRC for Pathology; University of Virginia
Linda Thorsen, MA, Accreditation Council for Graduate Medical Education

9:00 am - 9:30 am Introduction to the Pathology Milestones and Next Accreditation System
Wesley Naritoku, MD, PhD, University of Southern California
*Stephen P. Nestler, PhD, Accreditation Council for Graduate Medical
Education*

9:30 am - 10:00 am Q & A Session with Discussion

Association of Pathology Chairs 2013 Annual Meeting

July 9-12, 2013

Seaport Boston Hotel & World Trade Center, Boston, Massachusetts

- 10:00 am - 10:30 am** **Break, Exhibits**
[This is not a Continuing Medical Education activity]
Harborview Ballroom, Plaza Level, Seaport World Trade Center
- 10:30 am - 12:30 pm** **Joint Advocacy Session (Chairs/PRODS/PDAS/UMEDS)**
Amphitheater, Mezzanine Level, Seaport World Trade Center
Moderators: Daniel Remick, MD, Boston University; Dani Zander, MD, Penn State University
- 10:30 am - 11:15 am Keynote: Health care reform and the revolution in health care delivery, payment systems, and the American Medical Association
James Madara, MD, Executive Vice President and Chief Executive Officer, American Medical Association
- 11:15 am - 11:25 am Keynote Q & A Session

Responses to keynote from Pathology Roundtable representatives:
- 11:25 am - 11:30 am ABP Representative
Rebecca L. Johnson, MD, The American Board of Pathology
- 11:30 am - 11:35 am ACLPS Representative
Robinna G. Lorenz, MD, PhD, University of Alabama, Birmingham
- 11:35 am - 11:40 am ASCP Representative
Steven H. Kroft, MD, Medical College of Wisconsin
- 11:40 am - 11:45 am ASIP Representative
James M. Musser, MD, PhD, The Methodist Hospital System
- 11:45 am - 11:50 am ADASP Representative
Peter Humphrey, MD, PhD, Washington University
- 11:50 am - 11:55 am CAP Representative
Stanley Robboy, MD, FFPATH RCPI (hon), Duke University
- 11:55 am - 12:00 pm USCAP Representative
Jeffrey Myers, MD, University of Michigan
- 12:00 pm - 12:30 pm Panel Discussion / Q & A Session
- 12:30 pm - 2:00 pm** **Lunch Discussion Groups**

Workforce Issues in Pathology and Laboratory Medicine
Seaport World Trade Center

Association of Pathology Chairs 2013 Annual Meeting

July 9-12, 2013

Seaport Boston Hotel & World Trade Center, Boston, Massachusetts

- 12:30 pm - 2:00 pm Discussion Group #2 (GME) – Cambridge Room I, Harbor Level
Preserving pathology residency and fellowship training programs
Peter Kragel, MD, East Carolina University
Suzanne Powell, MD, The Methodist Hospital System
Rebecca Johnson, MD, The American Board of Pathology
- 12:30 pm - 2:00 pm Discussion Group #3 (GME, UME) – Cityview Ballroom, Plaza Level
Training pathologists with the right skill-set for the future: Appropriate curriculum, appropriate milestones
Robert Hoffman, MD, PhD, Vanderbilt University
Richard Conran, MD, PhD, JD, Uniformed Services University of the Health Sciences
Wesley Naritoku, MD, PhD, University of Southern California
- 12:30 pm - 2:00 pm Discussion Group #4 (GME) – Waterfront Ballroom II, Harbor Level
The ACGME “Next” Accreditation System: Maintaining accreditation into the future
Steven Nestler, PhD, Accreditation Council for Graduate Medical Education
C. Bruce Alexander, MD, University of Alabama, Birmingham
- 12:30 pm - 2:00 pm Discussion Group #6 (P&M, GME, UME) – Skyline Room, Plaza Level
The role of academic pathology in building and maintaining the technical laboratory workforce of the future
Beverly Kirby, MA, EdD, West Virginia University
Steven H. Kroft, MD, Medical College of Wisconsin
- 12:30 pm - 2:00 pm Discussion Group #7 (Research, GME) – North End Room, Plaza Level
Creating the workforce for clinical outcomes/clinical services research in pathology and laboratory medicine
Jennifer Hunt, MD, MEd, University of Arkansas for Medical Sciences
Michael Laposata, MD, PhD, Vanderbilt University
- 12:30 pm - 2:00 pm Discussion Group #8 (Research, GME) – North End Room, Plaza Level
Supporting and sustaining the pathology research workforce
Jeffrey Golden, MD, Brigham & Women’s Hospital
Brian Smith, MD, Yale University
- 2:00 pm - 2:30 pm** **Break, Exhibits**
[This is not a Continuing Medical Education activity]
Harborview Ballroom, Plaza Level, Seaport World Trade Center
- 2:30 pm - 4:00 pm** **PRODS Plenary IV**
Cityview Ballroom, Plaza Level, Seaport World Trade Center
- 2:30 pm - 3:00 pm Pathology Milestones Update
Stephen Nestler, PhD, Accreditation Council for Graduate Medical Education

Association of Pathology Chairs 2013 Annual Meeting

July 9-12, 2013

Seaport Boston Hotel & World Trade Center, Boston, Massachusetts

3:00 pm - 4:00 pm Pathology Milestones Beta Test Site Panel
C. Bruce Alexander, MD, University of Alabama at Birmingham
Danielle Carpenter, MD, Washington University
Lisa Dixon, MD, University of Florida, Gainesville
Mary Furlong, MD, Georgetown University
William Glass, MD, PhD, University of Texas, Houston
Kymerly Gyure, MD, West Virginia University
Eyas Hattab, MD, Indiana University
Arundhati Rao, MD, PhD, Scott & White Healthcare/Texas A&M
Anwer Siddiqi, MD, University of Florida, Jacksonville
Karl Theil, MD, The Cleveland Clinic
Marwan Yared, MD, University of Arkansas for Medical Sciences
Nadeem Zafar, MD, University of Tennessee, Memphis

Friday, July 12, 2013

GENERAL INFORMATION:

7:00 am - 8:30 am

Breakfast

Cityview Foyer, Plaza Level, Seaport World Trade Center

PROGRAM INFORMATION:

7:30 am - 10:20 am

PRODS/GMEAS General Information/Updates

Cityview Ballroom I, Plaza Level, Seaport World Trade Center

7:30 am - 7:50 am

Resident-Centered USCAP Activities

Bruce Smoller, MD, U.S. and Canadian Academy of Pathology

7:50 am - 8:20 am

American Board of Pathology Recap with Q & A Session

Rebecca L. Johnson, MD, The American Board of Pathology

8:20 am - 8:50 am

ACGME – Pathology Residency Review Committee Report

Julia Iezzoni, MD, Chair, RRC for Pathology; University of Virginia

Linda Thorsen, MA, Accreditation Council for Graduate Medical Education

8:50 am - 10:05 am

The Next Accreditation System at the ACGME

Louis J. Ling, MD, Vice President, Hospital-Based Specialties, Accreditation Council on Graduate Medical Education

Linda Thorsen, MA, Accreditation Council for Graduate Medical Education

10:05 am - 10:20 am

The Next Accreditation System and CLER Visit - Q & A Session

10:20 am - 12:00 pm

PRODS Plenary V

Cityview Ballroom I, Plaza Level, Seaport World Trade Center

10:20 am - 10:40 am

Training Residents in Genomics (TRIG) Working Group Report

Richard Haspel, MD, PhD, Beth Israel Deaconess Medical Center

Association of Pathology Chairs 2013 Annual Meeting

July 9-12, 2013

Seaport Boston Hotel & World Trade Center, Boston, Massachusetts

- 10:40 am - 11:00 am ASCP RISE Report
Henry Rinder, MD, Yale University
- 11:00 am - 11:15 am National Resident Matching Program – Report on the Match and SOAP
C. Bruce Alexander, MD, University of Alabama, Birmingham
- 11:15 am - 11:30 am CAP Residents Forum Report
Roseann I. Wu, MD, MPH, Massachusetts General Hospital
- 11:30 am - 11:45 am ASCP Resident Council Report
Jennifer N. Stall, MD, University of Michigan
- 11:45 am - 12:00 pm AAMC – Organization of Resident Representatives Report
Danielle Carpenter, MD, Washington University

12:00 pm - 1:15 pm **PRODS Farewell Lunch / Informal Discussion**
[This is not a Continuing Medical Education activity]
Cityview Ballroom II, Plaza Level, Seaport World Trade Center

12:00 pm - 6:00 pm **TRIG Working Group Meeting, Lunch (Invitation Only)**
[This is not a Continuing Medical Education activity]
Skyline Room, Plaza Level, Seaport World Trade Center
Moderator: Richard Haspel, MD, PhD, Beth Israel Deaconess Hospital

PRODS Program Adjourns at 1:15 pm

Association of Pathology Chairs 2013 Annual Meeting
July 9-12, 2013
Seaport Boston Hotel & World Trade Center, Boston, Massachusetts
PDAS PROGRAM

Tuesday, July 9, 2013

GENERAL INFORMATION:

2:00 pm - 3:00 pm

Pre-Meeting Workshop Sign-In

Cityview Foyer, Plaza Level, Seaport World Trade Center

6:00 pm - 9:00 pm

Meeting Registration

Harborview Foyer, Plaza Level, Seaport World Trade Center

6:00 pm - 9:00 pm

Exhibit Hours

Harborview Ballroom, Plaza Level, Seaport World Trade Center

PROGRAM INFORMATION:

3:00 pm - 6:00 pm

Pre-Meeting Workshop (Co-Sponsored by the College of American Pathologists and the Association of Pathology Chairs)

Live or Let Die: Clinical Informatics as a Transformative Discipline for Pathologists in the New Era of Value-Based Health

Cityview Ballroom, Plaza Level, Seaport World Trade Center

Accountable Care Organizations, bundled payment, and value based purchasing are emerging health care fiscal reforms. While pathology and clinical laboratory services account for less than 5% of health plan costs, their effect on clinical care is far greater. Clinical informatics will be crucial for making data-driven decisions in these new health care models. By taking ownership of clinical informatics within their organizations, attendees will be able to more effectively demonstrate their professional value, and be better prepared to drive improvements in clinical quality and cost management. Via relevant use cases, attendees will learn the concepts necessary to demonstrate leadership in clinical informatics working with teams of colleagues, clinicians, analysts and informaticists.

Objectives:

You will learn to:

- Understand who owns the data (e.g., providers, payers, and patients) and why.
- Articulate the What (e.g., diagnostic, claims), Where (e.g., databases) and When (e.g., update frequency) of clinical and financial health care data.
- Apply basic clinical informatics concepts to relevant use cases to facilitate data-driven decisions and to negotiate participation in a value-based health care model.

3:00 pm – 3:05 pm

Welcome and opening remarks

Donald Karcher, MD, The George Washington University School of Medicine

Association of Pathology Chairs 2013 Annual Meeting

July 9-12, 2013

Seaport Boston Hotel & World Trade Center, Boston, Massachusetts

- | | |
|-------------------|--|
| 3:05 pm – 3:15 pm | The Big Picture: How a pathologist fits into the new value-based marketplace
<i>James Crawford, MD, PhD, Hofstra NorthShore Long Island Jewish School of Medicine</i> |
| 3:15 pm – 3:30 pm | Data content and use in Healthcare
<i>James Crawford, MD, PhD, Hofstra NorthShore Long Island Jewish School of Medicine</i> |
| 3:30 pm – 3:45 pm | Leveraging data for the new marketplace
<i>James Crawford, MD, PhD, Hofstra NorthShore Long Island Jewish School of Medicine</i> |
| 3:45 pm – 3:55 pm | The skill sets required of Pathologists for the new marketplace
<i>James Crawford, MD, PhD, Hofstra NorthShore Long Island Jewish School of Medicine</i> |
| 3:55 pm – 4:05 pm | Q & A Session
<i>James Crawford, MD, PhD, Hofstra NorthShore Long Island Jewish School of Medicine</i> |
| 4:05 pm – 4:20 pm | Break (in-room) |
| 4:20 pm – 4:30 pm | Stakeholders and market demands in a value-based marketplace
<i>Philip Chen, MD, PhD, University of Miami</i> |
| 4:30 pm – 4:40 pm | Using financial and clinical informatics
<i>Philip Chen, MD, PhD, University of Miami</i> |
| 4:40 pm – 4:50 pm | The importance of use cases in demonstrating value
<i>Philip Chen, MD, PhD, University of Miami</i> |
| 4:50 pm – 5:00 pm | How to survive and prosper in a value-based environment
<i>Philip Chen, MD, PhD, University of Miami</i> |
| 5:00 pm – 5:10 pm | Q & A Session
<i>Philip Chen, MD, PhD, University of Miami</i> |
| 5:10 pm – 5:15 pm | Using clinical informatics to provide predictive support
<i>Frank Elevitch, MD, Health Care Engineering</i> |
| 5:15 pm – 5:25 pm | How to structure data domains
<i>Frank Elevitch, MD, Health Care Engineering</i> |
| 5:25 pm – 5:35 pm | The pitfalls of querying databases
<i>Frank Elevitch, MD, Health Care Engineering</i> |
| 5:35 pm – 5:50 pm | Modeling a value-based health care contract
<i>Frank Elevitch, MD, Health Care Engineering</i> |

Association of Pathology Chairs 2013 Annual Meeting

July 9-12, 2013

Seaport Boston Hotel & World Trade Center, Boston, Massachusetts

5:50 pm – 6:00 pm Q & A Session
Frank Elevitch, MD, Health Care Engineering

6:00 pm - 9:00 pm **Reception, Exhibits**
[This is not a Continuing Medical Education activity]
Harborview Ballroom, Plaza Level, Seaport World Trade Center

Wednesday, July 10, 2013

GENERAL INFORMATION:

7:00 am - 6:00 pm **Meeting Registration**
Harborview Foyer, Plaza Level, Seaport World Trade Center

7:00 am - 6:00 pm **Exhibit Hours**
Harborview Ballroom, Plaza Level, Seaport World Trade Center

9:00 am - 10:00 am **SPICE (Spouse and Guest) Refreshments & Event Launch**
Today's Event: Old Time Trolley Tour of Boston
Tamo Loft, Lobby Level, Seaport Boston Hotel

PROGRAM INFORMATION:

7:00 am - 8:00 am **Breakfast, Exhibits**
[This is not a Continuing Medical Education activity]
Harborview Ballroom, Plaza Level, Seaport World Trade Center

8:00 am - 11:00 am **Joint Chairs/PRODS/UMEDS/PDAS/GMEAS Session**

Primer on Health Care Financing, Health Care Payment and Delivery Models, and Health Care Delivery Management for Pathologists
Amphitheater, Mezzanine Level, Seaport World Trade Center
Moderator: Donald Karcher, MD, The George Washington University

8:00 am - 8:10 am The history of health care financing – from accounting to accountability
Stephen Black-Schaffer, MD, Massachusetts General Hospital

8:10 am - 8:15 am Health care and the Federal budget
Stephen Black-Schaffer, MD, Massachusetts General Hospital

8:15 am - 9:00 am Health care payment models
Stephen Black-Schaffer, MD, Massachusetts General Hospital

9:00 am - 9:15 am Q & A Session

9:15 am - 9:45 am **Break, Exhibits**
[This is not a Continuing Medical Education activity]
Harborview Ballroom, Plaza Level, Seaport World Trade Center

Association of Pathology Chairs 2013 Annual Meeting

July 9-12, 2013

Seaport Boston Hotel & World Trade Center, Boston, Massachusetts

- 9:45 am - 9:50 am Fundamentals of health care delivery
James Crawford, MD, PhD, Hofstra NorthShore Long Island Jewish School of Medicine
- 9:50 am - 10:35 am Health care delivery models over the years
James Crawford, MD, PhD, Hofstra NorthShore Long Island Jewish School of Medicine
- 10:35 am - 10:50 am The changing landscape in market competitions
Philip Chen, MD, PhD, University of Miami
- 10:50 am - 11:00 am Financial positioning and maneuvering in the new era of value-based health care delivery
Philip Chen, MD, PhD, University of Miami
- 11:00 am -11:15 am Q & A Session
- 11:15 am - 12:30 pm** **Joint Chairs/PRODS/UMEDS/PDAS/GMEAS Award Lunch**
[This is not a Continuing Medical Education activity]
Waterfront Ballroom, Harbor Level, Seaport World Trade Center
- 11:30 am - 11:35 am Welcome, Moment of Silence
Ann Thor, MD, University of Colorado, Denver
- 11:35 am - 11:40 am Michelle Raible Distinguished Teaching Award Presentation
Kenneth Klein, MD, University of Medicine and Dentistry of New Jersey
- 11:40 am - 11:45 am Graduate Medical Education Distinguished Teaching Award Presentation
Margaret Grimes, MD, MEd, Virginia Commonwealth University
- 11:45 am - 11:55 am Distinguished Service Award Presentation
Avrum I. Gotlieb, MD, FRCPC, University of Toronto
- 11:55 am - 12:05 pm Friends of Pathology Award Presentation
Mark E. Sobel, MD, PhD, American Society for Investigative Pathology
- 12:05 pm - 12:25 pm Archive Team Review of the APC History Project
Fred Gorstein, MD, Thomas Jefferson University
Mary F. Lipscomb, MD, University of New Mexico
- 12:30 pm - 5:00 pm** **PDAS Session I – Impact of the Re-Modeled Health Care System on Pathology and Laboratory Administration**
Beacon Hill Complex, Harbor Level, Seaport World Trade Center
- 12:30 pm - 12:35 pm Welcome and roadmap for PDAS Sessions
Martha Miers, Vanderbilt University
- 12:35 pm - 12:55 pm Sharing resources: Centralized SOM - human resources and IT
Beth Hansell, Medical University of South Carolina

Association of Pathology Chairs 2013 Annual Meeting

July 9-12, 2013

Seaport Boston Hotel & World Trade Center, Boston, Massachusetts

- 12:55 pm - 1:15 pm Sharing resources: Improving administrative services and quality while lowering cost structure
Martin Lawlor, University of Michigan
- 1:15 pm - 1:35 pm More with less: Staffing challenges in today's environment
John Baci, Boston Children's Hospital
- 1:35 pm - 1:55 pm Managing RIF's
Martha Miers, Vanderbilt University
- 1:55 pm - 2:15 pm Managing change – politics
David Wooster, Yale University
- 2:15 pm - 2:30 pm Questions and discussion
- 2:30 pm - 3:00 pm Break, Exhibits**
[This is not a Continuing Medical Education activity]
Harborview Ballroom, Plaza Level, Seaport Boston
- 3:00 pm - 3:20 pm Managing change – centralization of practice plan
Susan McCarthy, University of Southern California
- 3:20 pm - 3:40 pm Positive opportunities – PC billing
Gary Brown, University of Colorado, Denver
- 3:40 pm - 4:00 pm Part A negotiation
Kelley Suskie, University of Arkansas for Medical Sciences
- 4:00 pm - 4:20 pm Information for new and experienced PDAS members – cost-based vs. business-unit budgeting
Douglas Toothman, West Virginia University
- 4:20 pm - 4:40 pm Strategic planning and appreciative inquiry
Frank Butros, University of Virginia
- 4:40 pm - 5:00 pm Questions and discussion
- 5:00 pm - 6:00 pm Break, Exhibits**
[This is not a Continuing Medical Education activity]
Harborview Ballroom, Plaza Level, Seaport World Trade Center
- 6:00 pm - 9:00 pm Opening Dinner Cruise (Tickets Required)**
[This is not a Continuing Medical Education activity]
Launch from Seaport Boston Dock (promptly at 7:00 pm)

Thursday, July 11, 2013

GENERAL INFORMATION:

Association of Pathology Chairs 2013 Annual Meeting

July 9-12, 2013

Seaport Boston Hotel & World Trade Center, Boston, Massachusetts

- 7:00 am - 4:00 pm** **Meeting Registration**
Harborview Foyer, Plaza Level, Seaport World Trade Center
- 7:00 am - 4:00 pm** **Exhibit Hours**
Harborview Ballroom, Plaza Level, Seaport World Trade Center
- 9:00 am - 10:00 am** **SPICE (Spouse and Guest) Refreshments & Event Launch**
Today's Event: Museum of Fine Arts Tour
- 4:00 pm - 5:00 pm** **SPICE Refreshments & Book Club: *Caleb's Crossing* by Geraldine Brooks**
Tamo Loft, Lobby Level, Seaport Boston Hotel

PROGRAM INFORMATION:

- 7:00 am - 8:00 am** **Breakfast, Exhibits**
[This is not a Continuing Medical Education activity]
Harborview Ballroom, Plaza Level, Seaport World Trade Center
- 8:00 am - 10:00 am** **Joint Chairs/PDAS Session**
Amphitheater, Mezzanine Level, Seaport World Trade Center
Moderator: Barbara Ducatman, MD, West Virginia University
- 8:00 am - 8:10 am Demonstrating the value of pathologists in accountable/coordinated and patient-centered care – the national perspective
James Crawford, MD, PhD, Hofstra NorthShore Long Island Jewish School of Medicine
- 8:10 am - 8:25 am Demonstrating the value of pathologists in accountable/coordinated and patient-centered care – “real world” example
Robert Hunter, MD, PhD, University of Texas, Houston
- 8:25 am - 8:50 am Prospects for payment – pathology practice in the budgeted health care arena
Stephen Black-Schaffer, MD, Massachusetts General Hospital
- 8:50 am - 9:15 am Linking clinical and financial performance in negotiaton for care delivery payment
Philip Chen, MD, PhD, University of Miami
- 9:15 am - 9:40 am Competing in the clinical laboratory and anatomic pathology marketplace in the era of accountable/coordinated care
Michael Prystowsky, MD, PhD, Albert Einstein College of Medicine
- 9:40 am - 10:00 am Q & A Session
- 10:00 am - 10:30 am** **Break, Exhibits**
[This is not a Continuing Medical Education activity]
Harborview Ballroom, Plaza Level, Seaport World Trade Center

Association of Pathology Chairs 2013 Annual Meeting

July 9-12, 2013

Seaport Boston Hotel & World Trade Center, Boston, Massachusetts

- 10:30 am - 12:30 pm** **Joint Advocacy Session (Chairs/PRODS/PDAS/UMEDS)**
Amphitheater, Mezzanine Level, Seaport World Trade Center
Moderators: Daniel Remick, MD, Boston University; Dani Zander, MD, Penn State University
- 10:30 am - 11:15 am Keynote: Health care reform and the revolution in health care delivery, payment systems, and the American Medical Association
James Madara, MD, Executive Vice President and Chief Executive Officer, American Medical Association
- 11:15 am - 11:25 am Keynote Q & A Session
- Responses to keynote from Pathology Roundtable representatives:
- 11:25 am - 11:30 am ABP Representative
Rebecca L. Johnson, MD, The American Board of Pathology
- 11:30 am - 11:35 am ACLPS Representative
Robinna G. Lorenz, MD, PhD, University of Alabama, Birmingham
- 11:35 am - 11:40 am ASCP Representative
Steven H. Kroft, MD, Medical College of Wisconsin
- 11:40 am - 11:45 am ASIP Representative
James M. Musser, MD, PhD, The Methodist Hospital System
- 11:45 am - 11:50 am ADASP Representative
Peter Humphrey, MD, PhD, Washington University
- 11:50 am - 11:55 am CAP Representative
Stanley Robboy, MD, FFPATH RCPI (hon), Duke University
- 11:55 am - 12:00 pm USCAP Representative
Jeffrey Myers, MD, University of Michigan
- 12:00 pm - 12:30 pm Panel Discussion / Q & A Session
- 12:30 pm - 2:00 pm** **Lunch Discussion Groups**
- Workforce Issues in Pathology and Laboratory Medicine**
Seaport World Trade Center
- 12:30 pm - 2:00 pm Discussion Group #5 (P&M) – Waterfront Ballroom III, Harbor Level
Academic pathology in the re-tooling of practicing pathologists for emerging new roles
David Booker, MD, Laboratory Practice, PC; Trinity Hospital of Augusta
Barbara Ducatman, MD, West Virginia University

Association of Pathology Chairs 2013 Annual Meeting

July 9-12, 2013

Seaport Boston Hotel & World Trade Center, Boston, Massachusetts

12:30 pm - 2:00 pm Discussion Group #6 (P&M, GME) – Skyline Room, Plaza Level
The role of academic pathology in building and maintaining the technical
laboratory workforce of the future
Beverly Kirby, MA, EdD, West Virginia University
Steven H. Kroft, MD, Medical College of Wisconsin

12:30 pm - 2:00 pm Discussion Group #7 (Research, P&M) – North End Room, Plaza Level
Creating the workforce for clinical outcomes/clinical services research in
pathology and laboratory medicine
Jennifer Hunt, MD, MEd, University of Arkansas for Medical Sciences
Michael Laposata, MD, PhD, Vanderbilt University

2:00 pm - 2:30 pm

Break, Exhibits

[This is not a Continuing Medical Education activity]

Harborview Ballroom, Plaza Level, Seaport World Trade Center

2:30 pm - 4:00 pm

PDAS Session II – Clinical Practice Changes in the New Environment

Beacon Hill Complex, Harbor Level, Seaport World Trade Center

2:30 pm - 3:00 pm

Personalized medicine

Jennifer Hunt, MD, MEd, University of Arkansas for Medical Sciences

3:00 pm – 3:20 pm

Hematopathology diagnostic management team: An update

Adam Seegmiller, MD, PhD, Vanderbilt University

3:20 pm - 3:40 pm

Molecular genetic pathology

James M. Musser, MD, PhD, The Methodist Hospital System

3:40 pm - 4:00 pm

How will the role of the pathologist change?

Richard Friedberg, MD, PhD, Baystate Medical Center

4:00 pm - 4:30 pm

The changing lab industry – industry's perspective

Robert Michel, The Dark Report

Friday, July 12, 2013

GENERAL INFORMATION:

7:00 am - 8:30 am

Breakfast

Harborview Foyer, Plaza Level, Seaport World Trade Center

PROGRAM INFORMATION:

7:30 am - 8:30 am

Leadership Development & Diversity Ad Hoc Committee Session

Harborview Ballroom, Plaza Level, Seaport World Trade Center

7:30 am - 7:35 am

Welcome, opening remarks

Ann Thor, MD, University of Colorado, Denver

Association of Pathology Chairs 2013 Annual Meeting

July 9-12, 2013

Seaport Boston Hotel & World Trade Center, Boston, Massachusetts

7:35 am - 8:00 am Embracing diversity and gender as a transformative tool in academic medicine
Patricia A. Thomas, MD, MA, The University of Kansas

8:00 am - 8:20 am Career development: Where best intentions and gender bias collide
Ann Thor, MD, University of Colorado, Denver

8:20 am - 8:30 am Leadership Development & Diversity Session Q & A Session

8:30 am - 10:00 am

Benchmarking Academic Pathologists

Harborview Ballroom, Plaza Level, Seaport World Trade Center

8:30 am - 8:50 am 2012 APC Survey Data Review
Barbara Ducatman, MD, West Virginia University

8:50 am - 9:10 am Benchmarking: The BU Experience
Daniel Remick, MD, Boston University

9:10 am - 9:30 am Benchmarking clinical pathologists at VCU
David Wilkinson, MD, Medical College of Virginia

9:30 am - 9:50 am Benchmarking pathology faculty academic productivity
J. Charles Jennette, MD, University of North Carolina, Chapel Hill

9:50 am - 10:00 am Panel Discussion / Q & A Session

10:00 am – 10:15 am

Break, Prize Drawing

[This is not a Continuing Medical Education activity]

Harborview Foyer, Plaza Level, Seaport World Trade Center

10:15 am – 10:30 am

PDAS Business Meeting

[This is not a Continuing Medical Education activity]

Beacon Hill Complex, Harbor Level, Seaport World Trade Center

10:30 am - 1:00 pm

PDAS Session III

Beacon Hill Complex, Harbor Level, Seaport World Trade Center

10:30 am - 11:00 am New practice models
Jane Pine Wood, JD, McDonald Hopkins

11:00 am - 11:30 am New payment or charge models
Karyn Rae, Medical University of South Carolina

11:30 am - 12:00 pm Understanding the value of advanced diagnostics: Aligning labs, clinicians and payers to make better decisions
Matthew Zubiller, MBA, Vice President, Decision Management, McKesson

12:00 pm - 12:30 pm Precision cancer diagnostics
Jay Hess, MD, PhD, University of Michigan

Association of Pathology Chairs 2013 Annual Meeting

July 9-12, 2013

Seaport Boston Hotel & World Trade Center, Boston, Massachusetts

12:30 pm - 1:00 pm **Wrap-up: It's who we are**
Kelley Suskie, University of Arkansas for Medical Sciences

1:00 pm – 2:15 pm **PDAS Farewell Lunch / Informal Discussion**
[This is not a Continuing Medical Education activity]
Back Bay Complex, Mezzanine Level, Seaport World Trade Center

1:00 pm – 2:15 pm **PDAS Council Lunch / Meeting**
[This is not a Continuing Medical Education activity]
Washington Room, Mezzanine Level, Seaport World Trade Center

PDAS Program Adjourns at 2:15 pm

Association of Pathology Chairs 2013 Annual Meeting
July 9-12, 2013
Seaport Boston Hotel & World Trade Center, Boston, Massachusetts
UMEDS PROGRAM

Tuesday, July 9, 2013

[Note: The UMEDS 2-Day registration/program commences on Wednesday, July 10, 2013. Participation in the Tuesday program, including the Opening Reception, requires 3-Day registration.]

GENERAL INFORMATION:

2:00 pm – 3:00 pm

Pre-Meeting Workshop Sign-In

Cityview Foyer, Plaza Level, Seaport World Trade Center

6:00 pm - 9:00 pm

Meeting Registration

Harborview Foyer, Plaza Level, Seaport World Trade Center

6:00 pm - 9:00 pm

Exhibit Hours

Harborview Ballroom, Plaza Level, Seaport World Trade Center

PROGRAM INFORMATION:

3:00 pm - 6:00 pm

Pre-Meeting Workshop (Co-Sponsored by the College of American Pathologists and the Association of Pathology Chairs)

Live or Let Die: Clinical Informatics as a Transformative Discipline for Pathologists in the New Era of Value-Based Health

Cityview Ballroom, Plaza Level, Seaport World Trade Center

Accountable Care Organizations, bundled payment, and value based purchasing are emerging health care fiscal reforms. While pathology and clinical laboratory services account for less than 5% of health plan costs, their effect on clinical care is far greater. Clinical informatics will be crucial for making data-driven decisions in these new health care models. By taking ownership of clinical informatics within their organizations, attendees will be able to more effectively demonstrate their professional value, and be better prepared to drive improvements in clinical quality and cost management. Via relevant use cases, attendees will learn the concepts necessary to demonstrate leadership in clinical informatics working with teams of colleagues, clinicians, analysts and informaticists.

Objectives:

You will learn to:

- Understand who owns the data (e.g., providers, payers, and patients) and why.
- Articulate the What (e.g., diagnostic, claims), Where (e.g., databases) and When (e.g., update frequency) of clinical and financial health care data.
- Apply basic clinical informatics concepts to relevant use cases to facilitate data-driven decisions and to negotiate participation in a value-based health care model.

3:00 pm – 3:05 pm

Welcome and opening remarks

Donald Karcher, MD, The George Washington University School of Medicine

Association of Pathology Chairs 2013 Annual Meeting

July 9-12, 2013

Seaport Boston Hotel & World Trade Center, Boston, Massachusetts

- | | |
|-------------------|--|
| 3:05 pm – 3:15 pm | The Big Picture: How a pathologist fits into the new value-based marketplace
<i>James Crawford, MD, PhD, Hofstra NorthShore Long Island Jewish School of Medicine</i> |
| 3:15 pm – 3:30 pm | Data content and use in Healthcare
<i>James Crawford, MD, PhD, Hofstra NorthShore Long Island Jewish School of Medicine</i> |
| 3:30 pm – 3:45 pm | Leveraging data for the new marketplace
<i>James Crawford, MD, PhD, Hofstra NorthShore Long Island Jewish School of Medicine</i> |
| 3:45 pm – 3:55 pm | The skill sets required of Pathologists for the new marketplace
<i>James Crawford, MD, PhD, Hofstra NorthShore Long Island Jewish School of Medicine</i> |
| 3:55 pm – 4:05 pm | Q & A Session
<i>James Crawford, MD, PhD, Hofstra NorthShore Long Island Jewish School of Medicine</i> |
| 4:05 pm – 4:20 pm | Break (in-room) |
| 4:20 pm – 4:30 pm | Stakeholders and market demands in a value-based marketplace
<i>Philip Chen, MD, PhD, University of Miami</i> |
| 4:30 pm – 4:40 pm | Using financial and clinical informatics
<i>Philip Chen, MD, PhD, University of Miami</i> |
| 4:40 pm – 4:50 pm | The importance of use cases in demonstrating value
<i>Philip Chen, MD, PhD, University of Miami</i> |
| 4:50 pm – 5:00 pm | How to survive and prosper in a value-based environment
<i>Philip Chen, MD, PhD, University of Miami</i> |
| 5:00 pm – 5:10 pm | Q & A Session
<i>Philip Chen, MD, PhD, University of Miami</i> |
| 5:10 pm – 5:15 pm | Using clinical informatics to provide predictive support
<i>Frank Elevitch, MD, Health Care Engineering</i> |
| 5:15 pm – 5:25 pm | How to structure data domains
<i>Frank Elevitch, MD, Health Care Engineering</i> |
| 5:25 pm – 5:35 pm | The pitfalls of querying databases
<i>Frank Elevitch, MD, Health Care Engineering</i> |
| 5:35 pm – 5:50 pm | Modeling a value-based health care contract
<i>Frank Elevitch, MD, Health Care Engineering</i> |

Association of Pathology Chairs 2013 Annual Meeting

July 9-12, 2013

Seaport Boston Hotel & World Trade Center, Boston, Massachusetts

5:50 pm – 6:00 pm Q & A Session
Frank Elevitch, MD, Health Care Engineering

6:00 pm - 9:00 pm **Reception, Exhibits**
[This is not a Continuing Medical Education activity]
Harborview Ballroom, Plaza Level, Seaport World Trade Center

Wednesday, July 10, 2013

[Note: UMEDS 2-Day registration/program commences on Wednesday, July 10, 2013]

GENERAL INFORMATION:

7:00 am - 6:00 pm **Meeting Registration**
Harborview Foyer, Plaza Level, Seaport World Trade Center

7:00 am - 6:00 pm **Exhibit Hours**
Harborview Ballroom, Plaza Level, Seaport World Trade Center

9:00 am - 10:00 am **SPICE (Spouse and Guest) Refreshments & Event Launch**
Today's Event: Old Time Trolley Tour of Boston
Tamo Loft, Lobby Level, Seaport Boston Hotel

PROGRAM INFORMATION:

7:00 am - 8:00 am **Breakfast, Exhibits**
[This is not a Continuing Medical Education activity]
Harborview Ballroom, Plaza Level, Seaport World Trade Center

8:00 am - 11:00 am **Joint Chairs/PRODS/UMEDS/PDAS/GMEAS Session**

Primer on Health Care Financing, Health Care Payment and Delivery Models, and Health Care Delivery Management for Pathologists
Amphitheatre, Mezzanine Level, Seaport World Trade Center
Moderator: Donald Karcher, MD, The George Washington University

8:00 am - 8:10 am The history of health care financing – from accounting to accountability
Stephen Black-Schaffer, MD, Massachusetts General Hospital

8:10 am - 8:15 am Health care and the Federal budget
Stephen Black-Schaffer, MD, Massachusetts General Hospital

8:15 am - 9:00 am Health care payment models
Stephen Black-Schaffer, MD, Massachusetts General Hospital

9:00 am - 9:15 am Q & A Session

9:15 am - 9:45 am **Break, Exhibits**
[This is not a Continuing Medical Education activity]
Amphitheatre, Mezzanine Level, Seaport World Trade Center

Association of Pathology Chairs 2013 Annual Meeting

July 9-12, 2013

Seaport Boston Hotel & World Trade Center, Boston, Massachusetts

- 9:45 am - 9:50 am Fundamentals of health care delivery
James Crawford, MD, PhD, Hofstra NorthShore Long Island Jewish School of Medicine
- 9:50 am - 10:35 am Health care delivery models over the years
James Crawford, MD, PhD, Hofstra NorthShore Long Island Jewish School of Medicine
- 10:35 am - 10:50 am The changing landscape in market competitions
Philip Chen, MD, PhD, University of Miami
- 10:50 am - 11:00 am Financial positioning and maneuvering in the new era of value-based health care delivery
Philip Chen, MD, PhD, University of Miami
- 11:00 am -11:15 am Q & A Session
- 11:15 am - 12:30 pm** **Joint Chairs/PRODS/UMEDS/PDAS/GMEAS Award Lunch**
[This is not a Continuing Medical Education activity]
Waterfront Ballroom, Harbor Level, Seaport World Trade Center
- 11:30 am - 11:35 am Welcome, Moment of Silence
Ann Thor, MD, University of Colorado, Denver
- 11:35 am - 11:40 am Michelle Raible Distinguished Teaching Award Presentation
Kenneth Klein, MD, University of Medicine and Dentistry of New Jersey
- 11:40 am - 11:45 am Graduate Medical Education Distinguished Teaching Award Presentation
Margaret Grimes, MD, MEd, Virginia Commonwealth University
- 11:45 am - 11:55 am Distinguished Service Award Presentation
Avrum I. Gotlieb, MD, FRCPC, University of Toronto
- 11:55 am - 12:05 pm Friends of Pathology Award Presentation
Mark E. Sobel, MD, PhD, American Society for Investigative Pathology
- 12:05 pm - 12:25 pm Archive Team Review of the APC History Project
Fred Gorstein, MD, Thomas Jefferson University
Mary F. Lipscomb, MD, University of New Mexico
- 12:30 pm - 2:30 pm** **Joint Chairs/PRODS/UMEDS/GMEAS Session**
Amphitheater, Mezzanine Level, Seaport World Trade Center
- The “new” roles for pathologists in the era of accountable/coordinated and patient-centered care**
Moderator: Thomas Wheeler, MD, Baylor College of Medicine
- 12:30 pm - 12:45 pm Pathology service models for the value-based health care system:
Molecular, informatics, population and patient-centered care
L. Eleanor J. Herriman, MD, MBA, Managing Director, G-2 Intelligence

Association of Pathology Chairs 2013 Annual Meeting

July 9-12, 2013

Seaport Boston Hotel & World Trade Center, Boston, Massachusetts

- 12:45 pm - 1:00 pm Laboratory test utilization management
Conrad Schuerch, MD, Geisinger Health System
- 1:00 pm - 1:15 pm Clinical decision support, laboratory test consultation
Mary Zutter, MD, Vanderbilt University
- 1:15 pm - 1:30 pm Managing pathology data in the electronic health record: The critical need
for experts in pathology informatics
Alexis Carter, MD, Emory University
- 1:30 pm - 1:50 pm Evolution of the residency curriculum and training milestones to prepare
residents for these “new” roles
Robert Hoffman, MD, PhD, Vanderbilt University
- 1:50 pm - 2:10 pm Teaching medical students about the evolving role of pathology and the
“new” pathologist in accountable/coordinated and patient-centered care:
Improving care and increasing recruitment of students into pathology
Mara Rendi, MD, PhD, University of Washington
- 2:10 pm - 2:30 pm Panel Discussion / Q & A Session
- 2:30 pm - 3:00 pm Break, Exhibits**
[This is not a Continuing Medical Education activity]
Harborview Ballroom, Plaza Level, Seaport World Trade Center
- 3:00 pm - 5:30 pm PRODS/UMEDS/GMEAS Joint Session: Legal Aspects of Medical Education**
Cityview Ballroom, Plaza Level, Seaport World Trade Center
- 3:00 pm - 3:45 pm Fundamentals of Academic Law and Graduate Medical Education
Jamie Padmore, MSc, Vice President, Academic Affairs, MedStar Health;
Associate Dean for Graduate Medical Education and Educational
Scholarship, Georgetown University
- 3:45 pm - 4:00 pm Q & A Session
- 4:00 pm - 4:45 pm Advanced Issues in Graduate Medical Education Remediation and Resident
Dismissals
Jamie Padmore, MSc, MedStar Health/George town University
- 4:45 pm - 5:00 pm Q & A Session
- 5:00 pm - 5:30 pm Legal Aspects of Medical Education Panel Discussion
Jamie Padmore, MSc, MedStar Health/Georgetown University
C. Bruce Alexander, MD, University of Alabama, Birmingham
Suzanne Powell, MD, The Methodist Hospital System
Richard Conran, MD, PhD, JD, Uniformed Services University of the Health
Sciences
Allison Jones, MedStar Georgetown University Hospital

5:30 pm - 6:00 pm

UMEDS Business Meeting

Association of Pathology Chairs 2013 Annual Meeting

July 9-12, 2013

Seaport Boston Hotel & World Trade Center, Boston, Massachusetts

[This is not a Continuing Medical Education activity]

Skyline Room, Plaza Level, Seaport World Trade Center

6:00 pm - 9:00 pm **Opening Dinner Cruise (Tickets Required)**
[This is not a Continuing Medical Education activity]
Launch from Seaport Boston Dock (promptly at 7:00 pm)

Thursday, July 11, 2013

GENERAL INFORMATION:

7:00 am - 4:00 pm **Meeting Registration**
Harborview Foyer, Plaza Level, Seaport World Trade Center

7:00 am - 4:00 pm **Exhibit Hours**
Harborview Ballroom, Plaza Level, Seaport World Trade Center

9:00 am - 10:00 am **SPICE (Spouse and Guest) Refreshments & Event Launch**
Today's Event: Museum of Fine Arts Tour

4:00 pm - 5:00 pm **SPICE Refreshments & Book Club: *Caleb's Crossing* by Geraldine Brook**
Tamo Loft, Lobby Level, Seaport Boston Hotel

PROGRAM INFORMATION:

7:00 am - 8:00 am **Breakfast, Exhibits**
[This is not a Continuing Medical Education activity]
Harborview Ballroom, Plaza Level, Seaport World Trade Center

8:00 am - 10:00 am **UMEDS Session I - Social Media in Medical School Education**
Back Bay Complex, Mezzanine Level, Seaport World Trade Center

8:00 am - 9:00 am Social media in the classroom
Ana Martínez-Alemàn, MA, EdD, Chair, Department of Educational Leadership & Higher Education, Boston College

9:00 am - 10:00 am Leveraging social and digital media in "marketing" the specialty of Pathology
Monique Terrell, Director, Digital Strategy, College of American Pathologists

10:00 am - 10:30 am **Break, Exhibits**
[This is not a Continuing Medical Education activity]
Harborview Ballroom, Plaza Level, Seaport World Trade Center

10:30 am - 12:30 pm **Joint Advocacy Session (Chairs/PRODS/PDAS/UMEDS)**
Amphitheater, Mezzanine Level, Seaport World Trade Center
Moderators: Daniel Remick, MD, Boston University; Dani Zander, MD, Penn State University

10:30 am - 11:15 am Keynote: Health care reform and the revolution in health care delivery, payment systems, and the American Medical Association
James Madara, MD, Executive Vice President and Chief Executive Officer, American Medical Association

Association of Pathology Chairs 2013 Annual Meeting

July 9-12, 2013

Seaport Boston Hotel & World Trade Center, Boston, Massachusetts

- 11:15 am - 11:25 am Keynote Q & A Session
- Responses to keynote from Pathology Roundtable representatives:
- 11:25 am - 11:30 am ABP Representative
Rebecca L. Johnson, MD, The American Board of Pathology
- 11:30 am - 11:35 am ACLPS Representative
Robinna G. Lorenz, MD, PhD, University of Alabama, Birmingham
- 11:35 am - 11:40 am ASCP Representative
Steven H. Kroft, MD, Medical College of Wisconsin
- 11:40 am - 11:45 am ASIP Representative
James M. Musser, MD, PhD, The Methodist Hospital System
- 11:45 am - 11:50 am ADASP Representative
Peter Humphrey, MD, PhD, Washington University
- 11:50 am - 11:55 am CAP Representative
Stanley Robboy, MD, FFPATH RCPI (hon), Duke University
- 11:55 am – 12:00 pm USCAP Representative
Jeffrey Myers, MD, University of Michigan
- 12:00 pm - 12:30 pm Panel Discussion / Q & A Session

12:30 pm - 2:00 pm

Lunch Discussion Groups

Workforce Issues in Pathology and Laboratory Medicine

Seaport World Trade Center

- 12:30 pm - 2:00 pm Discussion Group #1 (UME) - Waterfront Ballroom I, Harbor Level
Recruitment of students into pathology: Keeping pathology practice visible in the integrated curriculum
Margret Magid, MD, Icahn School of Medicine at Mount Sinai
Barbara Jean Magnani, PhD, MD, Tufts Medical Center
Michael Prystowsky, MD, PhD, Albert Einstein College of Medicine
- 12:30 pm - 2:00 pm Discussion Group #3 (GME, UME) – Cityview Ballroom, Plaza Level
Training pathologists with the right skill-set for the future: Appropriate curriculum, appropriate milestones
Robert Hoffman, MD, PhD, Vanderbilt University
Richard Conran, MD, PhD, JD, Uniformed Services University of the Health Sciences
Wesley Naritoku, MD, PhD, University of Southern California
- 12:30 pm - 2:00 pm Discussion Group #6 (P&M, GME, UME) – Skyline Room, Plaza Level
The role of academic pathology in building and maintaining the technical laboratory workforce of the future
Beverly Kirby, MA, EdD, West Virginia University
Steven H. Kroft, MD, Medical College of Wisconsin

Association of Pathology Chairs 2013 Annual Meeting

July 9-12, 2013

Seaport Boston Hotel & World Trade Center, Boston, Massachusetts

- 2:00 pm - 2:30 pm** **Break, Exhibits**
[This is not a Continuing Medical Education activity]
Harborview Ballroom, Plaza Level, Seaport World Trade Center
- 2:30 pm - 4:00 pm** **Innovations in Pathology Education**
Back Bay Complex, Mezzanine Level, Seaport World Trade Center
- 2:30 pm - 2:50 pm The flipped classroom: Strategies for student engagement
Peter Anderson, DVM, PhD, University of Alabama at Birmingham
- 2:50 pm - 3:10 pm *Demonstrating equivalence of curricula across all campuses of a multi-site school*
Roger Geiss, MD, University of Illinois at Peoria
Amy Lin, MD, University of Illinois at Chicago
- 3:10 pm - 3:30 pm *Role of pathology in anatomy curriculum: Integrated approach*
Mujtaba Husain, MD, University of Central Florida
- 3:30 pm - 3:50 pm *Pathology observerships*
H. James Williams, MD, West Virginia University
- 3:50 pm - 4:00 pm Panel Discussion / Q & A Session
- 4:00 pm - 5:30 pm** **Laboratory Medicine and Genomics**
Back Bay Complex, Mezzanine Level, Seaport World Trade Center
- 4:00 pm - 4:20 pm *How do medical schools teach genomics?*
James Atkinson, MD, PhD, Vanderbilt University
- 4:20 pm - 4:40 pm *Survey of recommended medical school graduation pathology competencies*
Margret Magid, MD, Icahn School of Medicine at Mount Sinai
- 4:40 pm - 5:00 pm *Survey of medical student laboratory medicine competencies*
Brian Smith, MD, Yale University
- 5:00 pm - 5:20 pm *Development of learning objectives for pathology*
Michael Prystowsky, MD, PhD, Albert Einstein College of Medicine
- 5:20 pm - 5:30 pm Panel Discussion / Q & A Session
- 5:30 pm - 6:00 pm** **Open Forum: Peer-to-Peer Exchange**
Back Bay Complex, Mezzanine Level, Seaport World Trade Center
Moderator: Richard Conran, MD, PhD, JD, Uniformed Services University of the Health Sciences

[Note: UMEDS 2-Day registration/program adjourns at 6:00 pm on Thursday, July 11, 2013; UMEDS 3-Day program continues with PRODS and Chairs programming on Friday, July 12, 2013]

Association of Pathology Chairs 2013 Annual Meeting
July 9-12, 2013
Seaport Boston Hotel & World Trade Center, Boston, Massachusetts
GMEAS PROGRAM

Tuesday, July 9, 2013

[Note: The GMEAS 2-Day registration/program commences on Wednesday, July 10, 2013. Participation in the Tuesday program, including the Opening Reception, requires 3-Day registration.]

GENERAL INFORMATION:

2:00 pm – 3:00 pm

Pre-Meeting Workshop Sign-In

Cityview Foyer, Plaza Level, Seaport World Trade Center

6:00 pm - 9:00 pm

Meeting Registration

Harborview Foyer, Plaza Level, Seaport World Trade Center

6:00 pm - 9:00 pm

Exhibit Hours

Harborview Ballroom, Plaza Level, Seaport World Trade Center

PROGRAM INFORMATION:

3:00 pm - 6:00 pm

Pre-Meeting Workshop (Co-Sponsored by the College of American Pathologists and the Association of Pathology Chairs)

Live or Let Die: Clinical Informatics as a Transformative Discipline for Pathologists in the New Era of Value-Based Health

Cityview Ballroom, Plaza Level, Seaport World Trade Center

Accountable Care Organizations, bundled payment, and value based purchasing are emerging health care fiscal reforms. While pathology and clinical laboratory services account for less than 5% of health plan costs, their effect on clinical care is far greater. Clinical informatics will be crucial for making data-driven decisions in these new health care models. By taking ownership of clinical informatics within their organizations, attendees will be able to more effectively demonstrate their professional value, and be better prepared to drive improvements in clinical quality and cost management. Via relevant use cases, attendees will learn the concepts necessary to demonstrate leadership in clinical informatics working with teams of colleagues, clinicians, analysts and informaticists.

Objectives:

You will learn to:

- Understand who owns the data (e.g., providers, payers, and patients) and why.
- Articulate the What (e.g., diagnostic, claims), Where (e.g., databases) and When (e.g., update frequency) of clinical and financial health care data.
- Apply basic clinical informatics concepts to relevant use cases to facilitate data-driven decisions and to negotiate participation in a value-based health care model.

3:00 pm – 3:05 pm

Welcome and opening remarks

Donald Karcher, MD, The George Washington University School of Medicine

Association of Pathology Chairs 2013 Annual Meeting

July 9-12, 2013

Seaport Boston Hotel & World Trade Center, Boston, Massachusetts

- | | |
|-------------------|--|
| 3:05 pm – 3:15 pm | The Big Picture: How a pathologist fits into the new value-based marketplace
<i>James Crawford, MD, PhD, Hofstra NorthShore Long Island Jewish School of Medicine</i> |
| 3:15 pm – 3:30 pm | Data content and use in Healthcare
<i>James Crawford, MD, PhD, Hofstra NorthShore Long Island Jewish School of Medicine</i> |
| 3:30 pm – 3:45 pm | Leveraging data for the new marketplace
<i>James Crawford, MD, PhD, Hofstra NorthShore Long Island Jewish School of Medicine</i> |
| 3:45 pm – 3:55 pm | The skill sets required of Pathologists for the new marketplace
<i>James Crawford, MD, PhD, Hofstra NorthShore Long Island Jewish School of Medicine</i> |
| 3:55 pm – 4:05 pm | Q & A Session
<i>James Crawford, MD, PhD, Hofstra NorthShore Long Island Jewish School of Medicine</i> |
| 4:05 pm – 4:20 pm | Break (in-room) |
| 4:20 pm – 4:30 pm | Stakeholders and market demands in a value-based marketplace
<i>Philip Chen, MD, PhD, University of Miami</i> |
| 4:30 pm – 4:40 pm | Using financial and clinical informatics
<i>Philip Chen, MD, PhD, University of Miami</i> |
| 4:40 pm – 4:50 pm | The importance of use cases in demonstrating value
<i>Philip Chen, MD, PhD, University of Miami</i> |
| 4:50 pm – 5:00 pm | How to survive and prosper in a value-based environment
<i>Philip Chen, MD, PhD, University of Miami</i> |
| 5:00 pm – 5:10 pm | Q & A Session
<i>Philip Chen, MD, PhD, University of Miami</i> |
| 5:10 pm – 5:15 pm | Using clinical informatics to provide predictive support
<i>Frank Elevitch, MD, Health Care Engineering</i> |
| 5:15 pm – 5:25 pm | How to structure data domains
<i>Frank Elevitch, MD, Health Care Engineering</i> |
| 5:25 pm – 5:35 pm | The pitfalls of querying databases
<i>Frank Elevitch, MD, Health Care Engineering</i> |
| 5:35 pm – 5:50 pm | Modeling a value-based health care contract
<i>Frank Elevitch, MD, Health Care Engineering</i> |

Association of Pathology Chairs 2013 Annual Meeting

July 9-12, 2013

Seaport Boston Hotel & World Trade Center, Boston, Massachusetts

5:50 pm – 6:00 pm Q & A Session
Frank Elevitch, MD, Health Care Engineering

6:00 pm - 9:00 pm **Reception, Exhibits**
[This is not a Continuing Medical Education activity]
Seaport World Trade Center

Wednesday, July 10, 2013

[Note: GMEAS 2-Day registration/program commences on Wednesday, July 10, 2013.]

GENERAL INFORMATION:

7:00 am - 6:00 pm **Meeting Registration**
Harborview Foyer, Plaza Level, Seaport World Trade Center

7:00 am - 6:00 pm **Exhibit Hours**
Harborview Ballroom, Plaza Level, Seaport World Trade Center

9:00 am - 10:00 am **SPICE (Spouse and Guest) Refreshments & Event Launch**
Today's Event: Old Time Trolley Tour of Boston
Tamo Loft, Lobby Level, Seaport Boston Hotel

PROGRAM INFORMATION:

7:00 am - 8:00 am **Breakfast, Exhibits**
[This is not a Continuing Medical Education activity]
Harborview Ballroom, Plaza Level, Seaport World Trade Center

8:00 am - 11:00 am **Joint Chairs/PRODS/UMEDS/PDAS/GMEAS Session**

Primer on Health Care Financing, Health Care Payment and Delivery Models, and Health Care Delivery Management for Pathologists
Amphitheater, Mezzanine Level, Seaport World Trade Center
Moderator: Donald Karcher, MD, The George Washington University

8:00 am - 8:10 am The history of health care financing – from accounting to accountability
Stephen Black-Schaffer, MD, Massachusetts General Hospital

8:10 am - 8:15 am Health care and the Federal budget
Stephen Black-Schaffer, MD, Massachusetts General Hospital

8:15 am - 9:00 am Health care payment models
Stephen Black-Schaffer, MD, Massachusetts General Hospital

9:00 am - 9:15 am Q & A Session

9:15 am - 9:45 am **Break, Exhibits**
[This is not a Continuing Medical Education activity]
Harborview Ballroom, Plaza Level, Seaport World Trade Center

Association of Pathology Chairs 2013 Annual Meeting

July 9-12, 2013

Seaport Boston Hotel & World Trade Center, Boston, Massachusetts

- 9:45 am - 9:50 am Fundamentals of health care delivery
James Crawford, MD, PhD, Hofstra NorthShore Long Island Jewish School of Medicine
- 9:50 am - 10:35 am Health care delivery models over the years
James Crawford, MD, PhD, Hofstra NorthShore Long Island Jewish School of Medicine
- 10:35 am - 10:50 am The changing landscape in market competitions
Philip Chen, MD, PhD, University of Miami
- 10:50 am - 11:00 am Financial positioning and maneuvering in the new era of value-based health care delivery
Philip Chen, MD, PhD, University of Miami
- 11:00 am -11:15 am Q & A Session
- 11:15 am - 12:30 pm Joint Chairs/PRODS/UMEDS/PDAS/GMEAS Award Lunch**
[This is not a Continuing Medical Education activity]
Waterfront Ballroom, Harbor Level, Seaport World Trade Center
- 11:30 am - 11:35 am Welcome, Moment of Silence
Ann Thor, MD, University of Colorado, Denver
- 11:35 am - 11:40 am Michelle Raible Distinguished Teaching Award Presentation
Kenneth Klein, MD, University of Medicine and Dentistry of New Jersey
- 11:40 am - 11:45 am Graduate Medical Education Distinguished Teaching Award Presentation
Margaret Grimes, MD, MEd, Virginia Commonwealth University
- 11:45 am - 11:55 am Distinguished Service Award Presentation
Avrum I. Gotlieb, MD, FRCPC, University of Toronto
- 11:55 am - 12:05 pm Friends of Pathology Award Presentation
Mark E. Sobel, MD, PhD, American Society for Investigative Pathology
- 12:05 pm - 12:25 pm Archive Team Review of the APC History Project
Fred Gorstein, MD, Thomas Jefferson University
Mary F. Lipscomb, MD, University of New Mexico
- 12:30 pm - 2:30 pm Joint Chairs/PRODS/UMEDS/GMEAS Session**
Amphitheater, Mezzanine Level, Seaport World Trade Center
- The “new” roles for pathologists in the era of accountable/coordinated and patient-centered care**
Moderator: Thomas Wheeler, MD, Baylor College of Medicine
- 12:30 pm - 12:45 pm Pathology service models for the value-based health care system:
Molecular, informatics, population and patient-centered care
L. Eleanor J. Herriman, MD, MBA, Managing Director, G-2 Intelligence

Association of Pathology Chairs 2013 Annual Meeting

July 9-12, 2013

Seaport Boston Hotel & World Trade Center, Boston, Massachusetts

- 12:45 pm - 1:00 pm Laboratory test utilization management
Conrad Schuerch, MD, Geisinger Health System
- 1:00 pm - 1:15 pm Clinical decision support, laboratory test consultation for clinicians and patients
Mary Zutter, MD, Vanderbilt University
- 1:15 pm - 1:30 pm Managing pathology data in the electronic health record: The critical need for experts in pathology informatics
Alexis Carter, MD, Emory University
- 1:30 pm - 1:50 pm Evolution of the residency curriculum and training milestones to prepare residents for these “new” roles
Robert Hoffman, MD, PhD, Vanderbilt University
- 1:50 pm - 2:10 pm Teaching medical students about the evolving role of pathology and the “new” pathologist in accountable/coordinated and patient-centered care: Improving care and increasing recruitment of students into pathology
Mara Rendi, MD, PhD, University of Washington
- 2:10 pm - 2:30 pm Panel Discussion / Q & A Session
- 2:30 pm - 3:00 pm** **Break, Exhibits**
[This is not a Continuing Medical Education activity]
Harborview Ballroom, Plaza Level, Seaport World Trade Center
- 3:00 pm - 5:30 pm** **PRODS/UMEDS/GMEAS Joint Session: Legal Aspects of Medical Education**
Cityview Ballroom, Plaza Level, Seaport World Trade Center
- 3:00 pm - 3:45 pm Fundamentals of Academic Law and Graduate Medical Education
Jamie Padmore, MSc, Vice President, Academic Affairs, MedStar Health; Associate Dean for Graduate Medical Education and Educational Scholarship, Georgetown University
- 3:45 pm - 4:00 pm Q & A Session
- 4:00 pm - 4:45 pm Advanced Issues in Graduate Medical Education Remediation and Resident Dismissals
Jamie Padmore, MSc, MedStar Health/ Georgetown University
- 4:45 pm - 5:00 pm Q & A Session
- 5:00 pm - 5:30 pm Legal Aspects of Medical Education Panel Discussion
Jamie Padmore, MSc, MedStar Health/Georgetown University
C. Bruce Alexander, MD, University of Alabama, Birmingham
Richard Conran, MD, PhD, JD, Uniformed Services University of the Health Sciences
Allison Jones, MedStar Georgetown University Hospital
Suzanne Powell, MD, The Methodist Hospital System

Association of Pathology Chairs 2013 Annual Meeting

July 9-12, 2013

Seaport Boston Hotel & World Trade Center, Boston, Massachusetts

5:30 pm - 6:00 pm **Break, Exhibits**
[This is not a Continuing Medical Education activity]
Harborview Ballroom, Plaza Level, Seaport World Trade Center

6:00 pm - 9:00 pm **Opening Dinner Cruise (Tickets Required)**
[This is not a Continuing Medical Education activity]
Launch from Seaport Boston Dock (promptly at 7:00 pm)

Thursday, July 11, 2013

GENERAL INFORMATION:

7:00 am - 4:00 pm **Meeting Registration**
Harborview Foyer, Plaza Level, Seaport World Trade Center

7:00 am - 4:00 pm **Exhibit Hours**
Harborview Ballroom, Plaza Level, Seaport World Trade Center

9:00 am - 10:00 am **SPICE (Spouse and Guest) Refreshments & Event Launch**
Today's Event: Museum of Fine Arts Tour

4:00 pm - 5:00 pm **SPICE Refreshments & Book Club: *Caleb's Crossing* by Geraldine Brook**
Tamo Loft, Lobby Level, Seaport Boston Hotel

PROGRAM INFORMATION:

7:00 am - 8:00 am **Breakfast, Exhibits**
[This is not a Continuing Medical Education activity]
Harborview Ballroom, Plaza Level, Seaport World Trade Center

8:00 am - 10:00 am **Joint *NEW* PRODS/GMEAS Session**
Cityview Ballroom, Plaza Level, Seaport World Trade Center

8:00 am - 8:30 am American Board of Pathology Report
Rebecca Johnson, MD, The American Board of Pathology

8:30 am - 9:00 am ACGME – Pathology Residency Review Committee: Introduction for new
program directors
Julia Iezzoni, MD, Chair, Pathology RRC; University of Virginia
Linda Thorsen, MA, Accreditation Council for Graduate Medical Education

9:00 am - 9:30 am Introduction to the Pathology Milestones and Next Accreditation System
Wesley Naritoku, MD, PhD, University of Southern California
Stephen Nestler, PhD, Accreditation Council for Graduate Medical Education

9:30 am - 10:00 am Q & A Session with Discussion

10:00 am - 10:30 am **Break, Exhibits**
[This is not a Continuing Medical Education activity]
Harborview Ballroom, Plaza Level, Seaport World Trade Center

Association of Pathology Chairs 2013 Annual Meeting

July 9-12, 2013

Seaport Boston Hotel & World Trade Center, Boston, Massachusetts

- 10:30 am - 12:30 pm** **GMEAS Session I – Professional Development & Best Practices**
[This is not a Continuing Medical Education activity]
Federal Complex, Mezzanine Level, Seaport World Trade Center
- 10:30 am - 11:00 am Next Accreditation System in Radiology: Implications for Pathology Implementation
Kitt Shaffer, MD, PhD, Vice Chair of Education, Boston University
- 11:00 am - 12:00 pm Best Practices: Open Discussion
Moderators: Allison Jones, Georgetown University; Katie Warfield, University of Maryland
- CHOOSE:
- 12:00 pm - 12:30 pm New Coordinator Session (for Early Career Coordinators)
Katie Warfield, C-TAGME, University of Maryland
Federal Complex, Mezzanine Level, Seaport World Trade Center
- OR:
- 12:00 pm - 12:30 pm TAGME ... You're It (for Senior Coordinators)
Chelle Kozy, C-TAGME, Orlando Health
Congress Boardroom, Mezzanine Level, Seaport World Trade Center
- 12:30 pm - 1:30 pm** **Lunch / GMEAS Business Meeting**
[This is not a Continuing Medical Education activity]
Federal Complex, Mezzanine Level, Seaport World Trade Center
- 1:30 pm - 2:30 pm** **GMEAS Session II – Addressing Knowledge Gaps**
[This is not a Continuing Medical Education activity]
Federal Complex, Mezzanine Level, Seaport World Trade Center
- 1:30 pm - 2:00 pm Bridging the Gap: AP/CP/Fellowship Discussion
Allison Jones, Georgetown University
- 2:00 pm - 2:30 pm Ask the Experts
Pamela Nelson, Wayne State University
Amy Motta, University of Utah
- 2:30 pm - 4:00 pm** **PRODS Plenary IV**
Cityview Ballroom, Plaza Level, Seaport World Trade Center
- 2:30 pm - 3:00 pm Pathology Milestones Update
Stephen Nestler, PhD, Accreditation Council for Graduate Medical Education
- 3:00 pm - 4:00 pm Pathology Milestones Beta Test Site Panel
C. Bruce Alexander, MD, University of Alabama at Birmingham
Danielle Carpenter, MD, Washington University
Lisa Dixon, MD, University of Florida, Gainesville
Mary Furlong, MD, Georgetown University
William Glass, MD, PhD, University of Texas, Houston
Kymerly Gyure, MD, West Virginia University
Eyas Hattab, MD, Indiana University
Arundhati Rao, MD, PhD, Scott & White Healthcare/Texas A&M

Association of Pathology Chairs 2013 Annual Meeting

July 9-12, 2013

Seaport Boston Hotel & World Trade Center, Boston, Massachusetts

3:00 pm - 4:00 pm Pathology Milestones Beta Test Site Panel (continued)
Anwer Siddiqi, MD, University of Florida, Jacksonville
Karl Theil, MD, The Cleveland Clinic
Marwan Yared, MD, University of Arkansas for Medical Sciences
Nadeem Zafar, MD, University of Tennessee, Memphis

4:00 pm - 5:00 pm **GMEAS Reception (Hosted by the College of American Pathologists)**
[This is not a Continuing Medical Education activity]
Tremont Room, Mezzanine Level, Seaport World Trade Center

5:00 pm - 6:00 pm **GMEAS Council Meeting**
[This is not a Continuing Medical Education activity]
Federal Complex, Mezzanine Level, Seaport World Trade Center

***[Note: GMEAS 2-Day registration/program adjourns at 5:00 pm on Thursday, July 11, 2013;
GMEAS 3-Day program continues with PRODS programming on Friday, July 12, 2013.]***

AWARDS & HISTORY

2013 APC AWARD RECIPIENTS

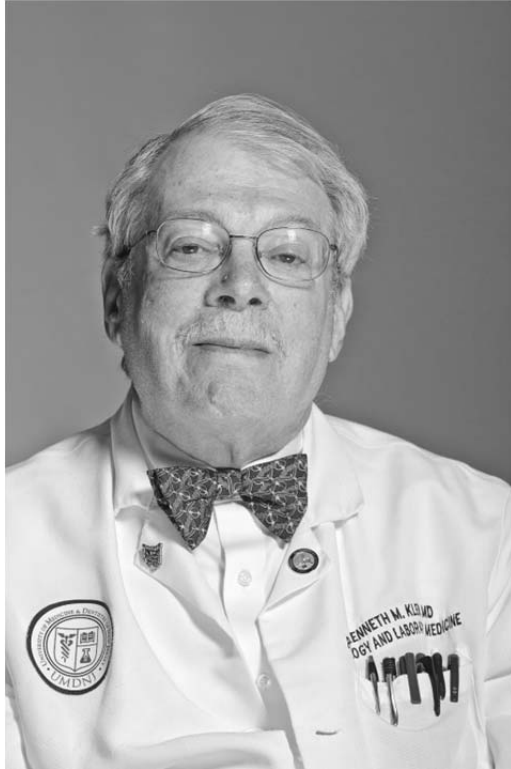
**MICHELLE RAIBLE DISTINGUISHED TEACHING AWARD
GRADUATE MEDICAL EDUCATION DISTINGUISHED TEACHING AWARD
DISTINGUISHED SERVICE AWARD
FRIENDS OF PATHOLOGY AWARD**

ASSOCIATION OF PATHOLOGY CHAIRS
ANNUAL MEETING
JULY 9-12, 2013
BOSTON, MASSACHUSETTS

MICHELLE RAIBLE DISTINGUISHED TEACHING AWARD

Kenneth Klein, MD

University of Medicine and Dentistry of New Jersey



Dr. Kenneth M. Klein received his medical degree cum laude at the Catholic University of Louvain (Leuven), Belgium, in 1967. He then completed his internship and residency training in Anatomic and Clinical Pathology at the New York University-Bellevue Medical Center, studying liver and gastrointestinal pathology under Dr. Frederick Becker, pediatric pathology under Dr. Milton Finegold, and gynecologic pathology under Drs. Fred Gorstein and Ansell Blaustein. At the conclusion of his residency in 1972, he was appointed Assistant Professor at NYU and Attending Pathologist at Bellevue.

In 1976, he moved to what was then called the College of Medicine and Dentistry of New Jersey-New Jersey Medical School in Newark, where he has remained for the past thirty-seven years, becoming Professor in 1988. During his tenure,

he was the Pathology Course Director or Co-Director for almost 30 of those years and the Residency Program Director for over a decade and, as such, was a founding member of both PRODS and UMEDS. When he arrived at NJMS, he began a weekly GI and liver biopsy conference for the digestive disease fellows which has run continuously ever since—the longest running conference by one person at University Hospital—and 23 years ago, began a weekly liver transplant-hepatology conference for surgeons and internists. Dr. Klein has been a member of every LCME site visit task force at the medical school, the founding chair of the school's first course directors' committee in the 1980's, the chair of the new curriculum that was instituted in 1990, and the first course director of the integrated Disease Processes, Prevention and Therapeutics Course (which combined Pathology, Pharmacology, Introduction to Clinical Sciences, Nutrition and Preventive Medicine) as part of the NJMS Jubilee Curriculum that began ten years ago. He remained as Course Director for five years, and then became the Associate Director for Pathology when he elected to become a part-time faculty member.

He continues to lecture extensively and oversee all Pathology labs for the second year medical students (he also gives all the liver pathology lectures to the second year dental students). He

has received numerous accolades from the students, including twenty-eight Golden Apple awards and two lifetime achievement awards (one a crystal apple); election as a faculty member to the NJMS chapter of Alpha Omega Alpha and the Gold Humanism Society; election to the University's Master Educators Guild; the NJMS Faculty of the Year Award; and, this past month, the NJMS Distinguished Career Award in Clinical Science. Dr. Klein has also been active in the College of American Pathologists' Laboratory Accreditation Program, serving as the Middle Atlantic Regional Commissioner for the past eleven years after having been the New Jersey State Commissioner for five years. He has been happily married for 41 years to Constance. Together they have four successful children, two daughters-in-law and two beautiful grandchildren.

GRADUATE MEDICAL EDUCATION DISTINGUISHED TEACHING AWARD

**Margaret Grimes, MD, MEd
Virginia Commonwealth University**



Dr. Margaret Mary Grimes was born in Teaneck, New Jersey. She attended Rosemont College in Rosemont, Pennsylvania, with a major in Biology, and graduated cum laude in 1971. That same year, she began her medical school education at the New York Medical College in New York City. In 1975, Dr. Grimes earned her Doctorate of Medicine degree, and did her internship in Internal Medicine at what would become her future career institution, the Medical College of Virginia Hospitals, Virginia Commonwealth University. She stayed on at the MCV Hospitals, but changed specialty from Internal Medicine to Anatomic and Clinical Pathology, where she eventually served as Chief Resident. In 1980, Dr. Grimes returned to New York for a two-year fellowship in Surgical Pathology at the Columbia-Presbyterian Medical Center as a Senior Staff Associate. In 1982, she became Assistant Professor in the Department of

Pathology at the College of Physicians and Surgeons of Columbia University. Dr. Grimes was Acting Director of the Division of Surgical Pathology for a season, and after eight years at the College of Physicians and Surgeons of Columbia University, Dr. Grimes moved down south—back to Virginia Commonwealth University—where in 1990, she assumed the rank of Associate Professor in the Department of Pathology. Only two years after returning to MCV/VCU, Margaret was appointed Program Director of the Pathology Residency Training Program at VCU Medical Center. She remained in this position for the next 13 years.

Over her career, Dr. Grimes has earned over 27 awards, 19 of which are teaching awards, including being a finalist for the ACGME's prestigious Parker J. Palmer Courage to Teach Award. She has served on numerous university, medical school, hospital and departmental committees, and held course directorships over many medical school courses. She has authored or co-authored over 54 peer-reviewed publications, 32 abstracts, 2 book chapters and 2 book reviews. Dr. Grimes is a member of numerous professional societies, including among many others, ASCP, CAP, USCAP, and ADASP. She has served on the Graduate Medical Education Committees of ASCP and CAP, and through CAP, she served on an ad hoc Committee on Achievement of Competency for Residents. Since 2007, Dr. Grimes continues to serve as a Trustee on the American Board of Pathology, where she has served on numerous committees.

During her tenure as Program Director at Virginia Commonwealth University, Dr. Grimes rose through the ranks of the PRODS Council and became PRODS Chair from 2000 to 2002. From 2000 to 2007, Dr. Grimes served on the ACGME Residency Review Committee (RRC) for Pathology, where she was chair of the RRC from 2005 to 2007. Dr. Grimes was also on the Dermatopathology Subcommittee, where she served as Vice Chair from 2004 to 2007. While on the RRC for Pathology, Dr. Grimes was Co-Chair of the ad hoc Committee to Reconcile Common Program and Institutional Requirements, where she had the unenviable responsibility of aligning, revising and creating what we now know as the Common Program Requirements. She was a member of the Council of Review Committee Chairs and she still serves the ACGME as a member of the Standing Panel for Accreditation Appeals in Pathology. Some of her colleagues from the RRC for Pathology wrote the following:

"Dr. Margaret Grimes is an exceptional pathologist and educator and most deserving of this award. Her accomplishments are numerous, but her leadership with PRODS, the RRC, and the American Board of Pathology are highlights of her inspirational career. Margaret has been a dear friend and colleague to many of us. Her thoughtful demeanor, commitment to always make things better, dependability, and generosity with her time and talent have earned her the respect of all of us. I cannot think of anyone more deserving of this honor. Congratulations, Margaret!"

Rebecca Johnson, MD; CEO, ABP; Former Chair, RRC for Pathology

"I had the privilege of serving on the RRC when Margaret was chair. She exemplified professionalism and was always a great listener and a diplomat. Since her tenure as chair, she became a member of the board of the ABP, completed a degree in education focused on medicine, and served as a member of the Milestones Development Committee for Pathology.

All of the preceding you know!

I want to add that we have recently hired a new faculty member who will complete a fellowship in blood banking and transfusion medicine at the end of June from U Penn (she was also a CP only resident there). This young woman was a medical student in Richmond, and told me that she counts Margaret Grimes as her most significant mentor in medicine and pathology. She said that Margaret was always there for her - offering solid advice and direction, and giving her a sense of how important women are in medicine. She was a role model not only as a physician, but as a person. I could not think of higher praise. Margaret has given of herself quietly and competently to our specialty, while working diligently to improve her own abilities to mentor new medical professionals and pathologists. Kudos to Margaret on just one more achievement in her career!"

Suzanne Z. Powell, MD; Former Chair, RRC for Pathology

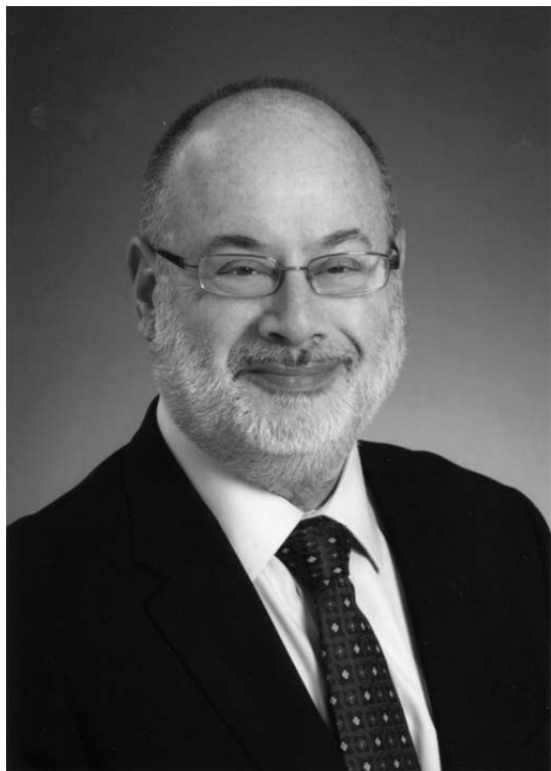
On behalf of the Association of Pathology Chairs and the Program Directors' Section, it is an honor to award the 2013 APC Distinguished Teaching Award in Graduate Medical Education to Margaret Mary Grimes, MD. Heartfelt congratulations to you, Margaret, for your numerous accomplishments and contributions to promote and improve the education of our young future pathologists.

Wesley Y. Naritoku, MD, PhD
PRODS Chair

DISTINGUISHED SERVICE AWARD

Avrum I. Gotlieb, MD, FRCPC

University of Toronto



Dr. Avrum Gotlieb received his BSc in Psychology and Physiology with First Class Honours (1967) and medical degree (1971) from McGill University, Montreal, Quebec. Between 1971-76, Dr. Gotlieb completed a Straight Internship in Internal Medicine, Anatomical Pathology residency training, and a research fellowship (under the supervision of Dr. Robert More) at McGill. He then went on to be a Visiting Research Associate at the University of California, San Diego under the supervision of Dr. S.J. Singer (1976-78). In 1978, Dr. Gotlieb was recruited to the Department of Pathology at the University of Toronto as an Assistant Professor, and he worked his way up the ranks to become Full Professor in 1988. Dr. Gotlieb has been a staff pathologist at St. Michael's Hospital, Toronto (1978-89), the Toronto Hospital (1988-99), and the University Health

Network, Toronto (1999-present).

Dr. Gotlieb has carried out an independent research program in cardiovascular pathobiology and is internationally recognized for his important discoveries related to the mechanisms of the development of valvular heart disease and atherosclerosis. He has published over 150 articles, reviews, and book chapters, has served as co-editor of the standard textbook *Cardiovascular Pathology*, and from 2002-11 co-edited the specialty journal *Cardiovascular Pathology*. He has also served on the editorial boards of important journals to the discipline, including *The American Journal of Pathology and Laboratory Investigation*. Dr. Gotlieb is also an outstanding teacher and educator who has made profound contributions, both internally at the University of Toronto, and to external academic and professional organizations such as the American Society for Investigative Pathology (ASIP); Federation of American Societies for Experimental Biology (FASEB); United States and Canadian Academy of Pathology (USCAP); Canadian Society for Atherosclerosis, Thrombosis and Vascular Biology; North American Vascular Biology Organization; Canadian Association of Pathologists; Society for Cardiovascular Pathology; and

Association of Pathology Chairs (APC), amongst many others. Dr. Gotlieb is a tireless advocate for research and education into causes and mechanisms of disease, and has mentored countless faculty, students, fellows, and trainees. He authored the well-known career guide booklets "The Road to Becoming a Biomedical Physician Scientist in Pathology and Laboratory Medicine," sponsored by ASIP and the University of Toronto, and "Journey to Success: Career Pathways for Biomedical Scientists in Pathology and Laboratory Medicine" with Dr. Tara Sander, also sponsored by ASIP.

Dr. Gotlieb led the merger of three departments at the University of Toronto (Pathology, Clinical Biochemistry, and Microbiology (clinicians)) to form a new Department of Laboratory Medicine and Pathobiology (LMP), for which he served with great distinction as the inaugural Chair from 1997-2008. Under the leadership of Dr. Gotlieb, LMP has become an internationally renowned department with over 300 faculty members, an innovative undergraduate Pathobiology Specialist program that has the highest GPA admission standard of any program at the University of Toronto, thriving undergraduate and postgraduate medical education programs, and an independent graduate studies program of more than 160 MSc and PhD students. Since completing his second term as LMP Chair, Professor Gotlieb has served in a number of key leadership roles in the Faculty of Medicine at the University of Toronto, including Vice Dean, Research and International Affairs (interim, 2009-11); Senior Academic Advisor to the Dean (2011-present); and Vice Dean, Graduate and Life Sciences Education (interim, 2011-present); he has recently completed serving as Chair of the Decanal Promotions Committee, Faculty of Medicine.

Dr. Gotlieb is the recipient of numerous honors and awards in recognition of research, teaching, and academic leadership, a partial list of which includes: Awards of Merit from the United States and Canadian Academy of Pathology (1999), Society for Cardiovascular Pathology (1999, 2001), and American Society for Investigative Pathology (2001); Fellow, Canadian Academy of Health Sciences (2006); William Boyd Lectureship, Canadian Association of Pathologists (2007); ASIP Robbins Distinguished Educator Award (2011); Senior Fellow, Association of Pathology Chairs (2011); Distinguished Achievement Award, Society for Cardiovascular Pathology (2012).

Dr. Gotlieb served on the APC Research Committee and as ASIP representative at APC Council, and was recognized as the "voice and conscience from north of the border" in terms of bringing the Canadian perspective to the APC. He is a well-respected and well-loved colleague whose cheerful and optimistic demeanor, generosity, and wisdom have had considerable and sustained influence and impact over the course of his distinguished academic career.

Richard Hegele, MD

FRIENDS OF PATHOLOGY AWARD
Mark E. Sobel, MD, PhD
American Society for Investigative Pathology



In 2007, the Friends of Pathology Award was created to recognize an individual outside of the field of Pathology and Laboratory Medicine, whose career accomplishments have been exceptionally beneficial to pathology and the pathology community. This year, our good friend and colleague, Mark E. Sobel, MD, PhD, has been selected as the 2013 Friends of Pathology Award recipient. He joins the esteemed ranks of previous recipients including Senator Edward M. Kennedy (2007), NIH Director Francis Collins (2009), and the Engelberg Center for Health Care Reform at the Brookings Institution (2012).

Dr. Sobel received his BA from Brandeis University in 1970, his MD from the Mount Sinai School of Medicine in 1975, and his PhD from the Graduate School of the City University of New York in 1975

with a concentration in Biochemistry. He completed a one-year residency in pediatrics at the Boston Children's Hospital Medical Center in 1976, and next began what became a 25-year career at the National Institutes of Health, including 9 years as Chief of the Molecular Pathology Section of the National Cancer Institute. Over the course of his career, Dr. Sobel has received awards including the United States Public Health Service Commendation Medal in 1989, the Saul J. Horowitz, Jr. Memorial Award from the Mount Sinai School of Medicine in 1991, and induction into Alpha Omega Alpha in 1995.

Dr. Sobel has provided important leadership to the pathology community in a number of capacities. He served as President of the American Society for Investigative Pathology (ASIP) and President of the Association for Molecular Pathology. He was the Course Director and main lecturer of the Concepts in Molecular Biology Course offered by the ASIP for 12 years. He also trained many colleagues who are now directors of molecular diagnostics laboratories in the United States. One important theme visible in Dr. Sobel's career is mentorship – he has been a wise and generous teacher, advisor and friend to innumerable colleagues seeking to build careers in our field. In 2001, Dr. Sobel left the National Cancer Institute to become the

Executive Officer of ASIP, publisher of *The American Journal of Pathology* and co-publisher of *The Journal of Molecular Diagnostics*; the Association of Molecular Pathology (AMP), co-publisher of *The Journal of Molecular Diagnostics*; the Intersociety Council for Pathology Information (ICPI), publisher of *The Directory of Pathology Training Programs*; the Association for Pathology Informatics; the International Society for Biological and Environmental Repositories; and the Association of Pathology Chairs (APC). He currently continues to serve as Executive Officer of ASIP and ICPI, and Executive Officer Emeritus of AMP.

Although he has not had formal training in Pathology, Dr. Sobel's contributions to the discipline of pathology are numerous and legendary. He is widely acknowledged as a key figure in advancing the development of molecular pathology and enabling its integration into clinical medicine. His research on gene regulation and the molecular basis of metastasis yielded papers that are still recognized as landmarks in the field. Dr. Sobel has continued to make important contributions in the field of bioethics and protection of human research subjects; he served as a member of the Board of Directors of the Association for the Accreditation of Human Research Protections Programs from the inception of the organization in 2001 until 2008. He remains a strong voice in the pathology and oncology communities on the appropriate uses of human biological materials for research studies. He has also played a major role in advocacy for pathology, serving as a spokesperson and key contributor to public policies regarding biobanking, molecular pathology, stem cell research, genomics, and public access to research. He additionally supports our field through his service on the Editorial Boards of *Laboratory Investigation*, *Diagnostic Molecular Pathology*, and *Archives of Pathology and Laboratory Medicine*.

Throughout his years of service and leadership, Mark Sobel has proven to be a true friend of pathology, and we are delighted to present him with this award.

Daniel Remick, MD, and Dani S. Zander, MD

APC HISTORY

**A Brief Review of the Early Years
(1960 to 1979)**

Prepared by:

Fred Gorstein, MD
Mary F. Lipscomb, MD
Francis Pitlick, PhD

ASSOCIATION OF PATHOLOGY CHAIRS
ANNUAL MEETING
JULY 9-12, 2013
BOSTON, MASSACHUSETTS

The Association of Pathology Chairs: A History of Service to Academic Pathology Departments

Note: In the early years, chairs were uniformly called “chairmen”, but “chairs” will generally be used throughout this document.

1960’s: The early years

The APC history began in the early 1960’s as a series of informal regional meetings that were initiated at the suggestion of the advisory committee of the NIH Pathology Study Section as a means of informing chairs of changing policies of the National Institutes of Health (NIH). The success of the regional meetings in facilitating communication among chairs led to an initial national meeting on March 5, 1965 in Philadelphia at the time of the American Association of Pathologists and Bacteriologists (AAPB) and the International Association of Pathologists (IAP) meeting, which was chaired by Dr. Thomas D. Kinney, chair at Duke University. Dr. Kinney was chair of the Pathology Study Section at the time that the regional chair meetings first began. It was recorded that at least 40 chairs attended this meeting, but 67 replied that they were in favor of a national organization. The decision was made to organize an informal association to meet each spring at an evening meeting during the regular annual meeting of the AAPB-IAP with the officers limited to a chair and a secretary, the latter to serve for three years to facilitate continuity. The chair of the association would serve one year and would generally be the chair of the pathology department in the city where the meeting was to be held. The chair would convene the meeting and organize the program. It was deemed important, though, that the regional meetings should continue and that the annual national meeting would receive reports from the regional entities. The name chosen for the organization was the rather ponderous **American Association of Pathology Chairmen of Medical School Departments (AAPCMSD)**. Important issues were to identify an optimal organization of academic departments including space, facilities, department size and manpower. In addition, Drs. Kinney and Robert W. Wissler (the secretary) noted the importance of recruiting students into pathology, and of analyzing where pathologists were being trained and where they went to practice pathology (the latter information oft referred to as “manpower studies”).

At the March 4, **1966** meeting, 52 chairs attended; and the need to formalize the association was apparent. Tom Kinney organized the meeting and served as its chair. A committee was appointed to write a constitution and bylaws, which included Drs. Kinney, Wissler and Robert Coon. Other issues discussed at this meeting included seeking a closer association with the Association of American Medical Colleges (AAMC) and the problem of oversubscription by pathology residents to the Berry Plan (a military plan during the Korean and Viet Nam wars that allowed the residents to defer military service to obtain pathology training, but then obligating them to serve for a period of two years in the military). The result of the Berry Plan was development of gaps in the numbers of pathologists available to fill both academic and practice positions.

On March 10, **1967**, at a meeting convened in Washington, DC, by Dr. Abner Golden of Georgetown, more than 50 chairs unanimously adopted a Constitution and Bylaws and decided to continue to use the extended name of the organization as the AAPCMSD. The constitution provided for a 6-member council, which was elected at this meeting as follows: Dr. Wissler, president; Dr. Robert Stone, vice-president; Dr. Joel Brunson, secretary-treasurer; Drs. Paul Lacy and Ashton Morrison, councilors; and Dr. Goldman, past-president. Dr. Wissler appointed Dr. Kinney to represent the AAPCMSD in the newly formed AAMC Council of Academic Societies (CAS), and Dr. Coon was appointed to chair a committee to arrange for the incorporation of the association. Important issues addressed at this meeting included two speakers from the NIH asking the pathology chairs to provide input about important areas for the NIH to pursue as funding was limited and a speaker from the VA stressing the ways that VA Hospitals could participate in training both medical and allied health science personnel. The leadership committed to the distribution of regular newsletters to keep its constituency abreast and relayed a plan to develop a clearinghouse for innovations in teaching and training, as well as a master record of appointments of its members to national and regional committees and study sections. The first newsletter came out in the summer of 1967 and was written by the Secretary- Treasurer, Dr. Brunson.

On June 26, **1968**, the **AAPCMSD** was formally incorporated in Washington, DC. The initial “mission” focused on communication among the chairs and also with various other organizations relevant to pathology. In the Articles of Incorporation, the purpose of the organization was originally: “to promote the interests and general effectiveness of medical school departments of pathology; to promote the growth and continuing development of the discipline of pathology” and later amended in 1969 as: “The Corporation is organized exclusively for the educational and charitable purposes of improving and advancing pathology education in the United States, through efforts to increase the general effectiveness of medical school departments of pathology and improvement of the curricula and administration thereof. For these purposes, the corporation is organized to provide a forum for discussion and a means for development and exchange of information among the chairmen of medical school departments of pathology.”

Through the period of **1967-71**, the AAPCMSD met in the spring with the AAPB [which merged with the American Society for Experimental Pathology in 1976 and later became the American Association of Pathologists (AAP) and finally, in 1992, the American Society for Investigative Pathologists (ASIP)] and with the IAP. In the March, **1969**, meeting prior to the AAPB meeting in San Francisco, there was a one-day program on computer applications.

In the fall **1969** newsletter, a list of all chairs and their departments was provided, including names of the full voting members (99 in all), and the corresponding members (12), with no vote. The Canadian chairs were corresponding members at that time, although they were later

given full member status. The Constitution and Bylaws as well as the Articles of Incorporation with Amendments to the Articles were also included in this newsletter. (Note: The list of the original chairs and documents will be appended to this history once it appears on our website.) Over the years, a number of amendments to the constitution and bylaws have been made, particularly those clarifying membership on the APC Council, mechanisms of election of officers of the organization, standing committees and the addition of sections.

1970's: A fledgling organization gains credibility and influence

At the March 7, **1971** meeting in Montreal, whether or not to have a national pathology resident matching program was discussed. In 1971, in addition to the annual spring meeting, a second regular meeting was also held in conjunction with AAMC in the fall. In addition, four regional meetings were held regularly and reports of these meeting had always constituted part of the annual meeting. The regional groups were the Northeast Chairs, the Southeast Chairs, which extended as far west as Texas, the Midwest Chairs and the Western Chairs. The minutes of these annual meetings were included in the newsletters and demonstrated common themes among all the chairs, i.e., issues around medical student and post graduate education, methods of funding departments, national issues that impacted laboratory inspection and billing, research funding, falling autopsy rates and reimbursement for autopsies.

By 1972, documents were now using a shortened name for the organization, the Association of Pathology Chairman, Inc. or the APC. In their Spring meeting, the organization confirmed its commitment to work more closely with the AAMC and to make the annual fall meeting held concurrently with the AAMC its official annual meeting. It elected officers in that spring for a year and a half so that subsequent new officers would be elected in the fall and begin their tenure at the beginning of the following year. Noting the success of two previous "Quail Roost" meetings that dealt with department management issues for chairs, it was also decided that a third such meeting should be organized, and Dr. Kenneth Brinkhous agreed to organize it. It is possible that these Quail Roost meetings were the forerunners of the later national APC meetings held in the summer independently from other national organizations.

The February **1973** newsletter noted that a VA pathology advisory council had been formed and was headed by Dr. John Carter under the auspices of the VA. Its intention was to work with APC, and it was at this time particularly interested in helping to support post-sophomore fellowships in pathology. In September, the Council met for the first time in Aspen, Colorado, later the first location for the annual summer APC meetings.

In **1974**, there was a combined meeting of West and Midwest groups, the Southeast group met and a national meeting was held November 11, 1974 in Chicago, one day prior to the AAMC meeting. Of note, at this time there were 435 residency programs, reduced from over 600 a few years before. (By 2013, there were only 137 accredited pathology training programs.)

In **1975**, it was proposed that an annual meeting of the combined West and Midwest groups be held in Aspen; which was scheduled for 1976. Council members typically met with the regional chairs in July in Aspen to help decide on the agendas for the regional meetings in the fall, and this planning strategy continued through the 70's.

In **1976**, then president, Dr. Robert Anderson, conveyed his opinion in a newsletter that the APC had been a primary change agent for pathology. As examples of important changes in which they were involved, he listed: 1) defining effective utilization of the clinical lab, 2) developing guidelines for residency training programs in pathology, 3) quantifying manpower needs in academic pathology, and 4) defining the role of the pathologists in immunopathology. Dr. Tom McGill was noted to have been very influential as an advocate for pathology in Washington.

In **1977**, several committees were identified as working within the organization, including a Research Committee, an Undergraduate Curriculum Committee, a Veterans Affairs (VA) Committee, an Immunopathology Committee (involved with creating a certification for the subspecialty within pathology), and a Pathology Resources Committee with the task of developing a data base of the finances, space, etc. of academic departments, as well as developing mechanisms for management training. Each was active and provided regular reports that were given at the annual meeting and printed in the newsletters. The passage of a law to regulate laboratories that received Medicare and Medicaid payments, the Clinical Laboratory Improvement Act (CLIA), was on the horizon, and it was clear that this legislation would require more rigorous inspection and accreditation and that CAP was already performing this service well. The APC Council met with several representatives from CAP to discuss common issues and APC committed to encouraging all academic pathology departments to have the hospital laboratories with which they were associated inspected and accredited by CAP, which many chairs had done. In addition, the two organizations agreed to cooperate on a second, more in-depth survey of manpower needs in pathology, which APC agreed to encourage their residency directors to complete. Recognizing the importance of a closer association, both organizations agreed to communicate regularly and to meet face-to-face at least annually. At the end of the year when Dr. Ellis Benson (then President of APC) was also at the end of his term, he noted that APC had become less of a "Dean's Club of Department heads meeting on a friendly basis" and instead had become an organization that spoke for academic pathology.

1978 was a very active year for APC with Dr. Tom Gill as the president and Dr. John Craighead beginning his three-year term as Secretary-Treasurer. It was becoming apparent that pathology might be threatened by the potential passage of a number of laws before Congress at the time that were aimed at containing the escalating costs of Medicare and Medicaid, but which also could threaten the recognition of pathologists as physicians, as well as their livelihood, unless there was strong pathology input. These laws, among others, included CLIA and the so-called

“Talmadge Amendment”. Dr. Rolla Hill was appointed as the Public Affairs Representative for a five-year term with the responsibility of keeping the APC and its Council informed about important issues relating to pathology, which he diligently did, reporting regularly in the newsletter to the entire membership, as well as meeting with Council. A five-year five-point set of goals was identified by Council, discussed by the membership at its regional meeting and approved at the annual meeting. The goals covered 1) primary concern for education at all levels, 2) the dual role of the pathologist as a scientist and physician, 3) the quality and development of pathology manpower, 4) financing academic departments, and 5) increased effectiveness of the APC. Also at the annual meeting in the fall, a new Articles of Incorporation was approved that defined more accurately how the organization operated including listing objectives, defining membership, describing who the officers were, what their responsibilities were and how they were elected, indicating who was on the Executive Council, and describing the central importance of the regional meetings to the function of the APC.

In **1979**, results from a new pathology manpower survey were reported that included input from a larger number of responses from accredited pathology programs than previously obtained. It indicated that between 500 and 600 residents had completed training each year in the previous five years and suggested that about 600 new pathologists would enter the job market per year in the coming years. The survey also indicated about 20% of finishing residents had difficulty finding jobs. It is appropriate to note that at this time, there was a nationwide concern that the US was turning out too many physicians and that there was an oversupply of specialists with too few generalists.

Chairs of the APC committees met with Council and the regional representatives at the summer Aspen Council meetings. Issues raised by the various committees included the absence of an autopsy experience for many medical students, the lack of clinical pathology in medical student pathology courses, whether the national matching program was going well, how the government’s attempts to control the number of residency positions might affect pathology and the need to develop management conferences for chairs. Another issue identified in an affirmative action survey of pathology departments this year was that the percentages of tenured/non-tenured faculty among women (13%/24%), blacks (1%/1%), Hispanics (3%/4.5%), Asian/Pacific Islanders (7%/12%) and Native Americans (0%/0.2%) was low, likely reflecting in part the low numbers of these groups entering medical school. The last newsletter of 1979 included the final draft of a document entitled the Articles of Incorporation (referred to as the APC Constitution and Bylaws) that had been developed and voted on in the previous year.

In the first 12 years since incorporation, the APC had grown in membership and complexity and was making a major impact nationally on a number of fronts. The dedication of the chairs who served on Council and on the various committees, and who regularly participated in the full meetings and regional meetings, made the APC the leader in strengthening academic pathology

departments, which in turn served to strengthen the medical institutions in which the department members taught and performed research and patient care.

Appendices (to be posted on the APC website – www.apcprods.org – in July 2013):

1. List of the original members of the APC as they appeared in Newsletter #10. 1969
2. First Constitution and Bylaws and the Articles of Incorporation with Amendments from Newsletter #10, 1969
3. Articles of Incorporation as it appeared in the Newsletter #44, 1979

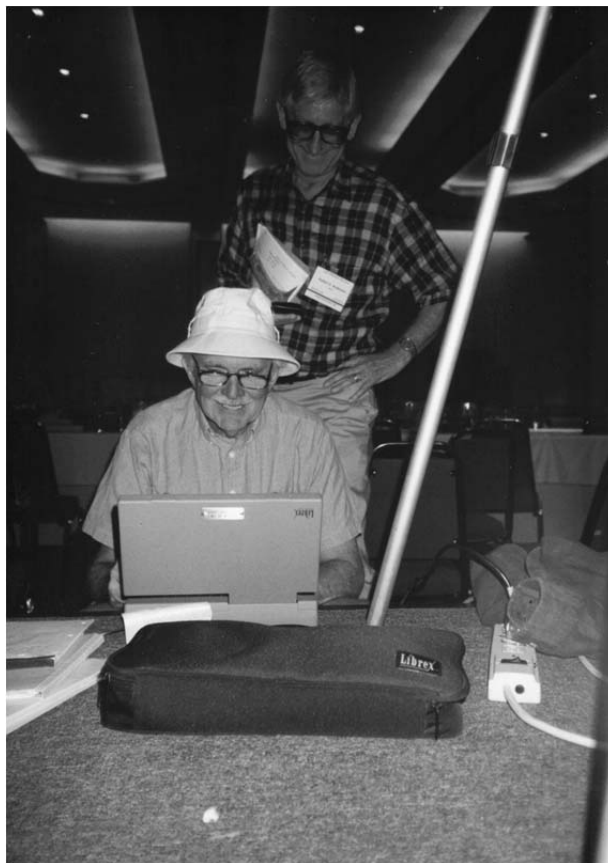


Figure 1. Drs. Rolla Hill (at computer) and Robert Anderson (standing) at a meeting in Aspen. The two were important early members of the APC and both served in various capacities, including serving on Council and each was president for a term. Each also was eventually a recipient of the Distinguished Service Award.

Continuing Medical Education (CME) Information



Association of
Pathology Chairs

CME Accreditation Statement: This activity (“APC 2013 Annual Meeting”) has been planned and implemented in accordance with the Essential Areas and policies of the Accreditation Council for Continuing Medical Education (ACCME) through the joint sponsorship of the American Society for Clinical Pathology (ASCP) and the Association of Pathology Chairs (APC). ASCP is accredited by the ACCME to provide continuing medical education for physicians.

The ASCP designates this “live” educational activity (“APC 2013 Annual Meeting”) for a maximum of 25 *AMA PRA Category 1 Credit(s)*[™]. Physicians should only claim credit commensurate with the extent of their participation in the activity.

CME applications are available online (www.apcprods.org) beginning **July 15, 2013**. Should you have questions, please contact the APC Office (301-634-7880; email info@apcprods.org).

Meeting Objective/Target Audience: The APC Annual Meeting is a three-day meeting that provides educational activities for three major target audiences: (1) Chairs of Pathology and Laboratory Medicine Departments; (2) Program Directors and Associate Directors of Residency Training Programs; and (3) Course Directors of pathology courses in LCME-accredited medical schools in North America. The objective of the meeting is to facilitate knowledge acquisition regarding the ability of academic Pathology and Laboratory Medicine departments to carry out their missions in teaching, clinical service, and research. The meeting therefore focuses on undergraduate (medical school), graduate (residency and fellowship) Pathology education, and the practice of Pathology and Laboratory medicine in academic medical centers and hospitals. Content focuses on issues such as the development of educational programs and curricula for the training of medical students, residents, fellows, and senior pathologists on providing cost-effective, high-quality clinical service to patients. The meeting also features content related to research and implementation of cutting edge practice tools, such as diagnostics, genomic medicine, and bioinformatics; and their implications on future healthcare delivery, as well as workforce development and realignment to support current and new skill sets required to practice Pathology and Laboratory Medicine now and into the future.

The target audience is professionals (MD, DO, PhD) and others who serve as the academic, medical, scientific, and administrative leaders of departments of pathology and laboratory medicine in the United States and Canada.

Disclosure of Financial Relationships and Resolution of Conflicts of Interest: In order to ensure balance, independence, objectivity and scientific rigor in all of its educational activities, and in accordance with ACCME Standards, the ASCP requires all individuals in a position to influence and/or control the content of ASCP CME activities to disclose to the ASCP and subsequently to learners whether they do or do not have any relevant financial relationships with proprietary entities producing health care goods or services that are discussed in CME activities. Faculty are asked to use generic names in any discussion of therapeutic options, to base patient care recommendations on scientific evidence and to base information regarding commercial products/services on scientific methods generally accepted by the medical community. All ASCP CME activities are evaluated by participants for the presence of any commercial bias and this input is used for subsequent CME planning decisions. The primary purpose of this activity is educational and the comments, opinions and/or recommendations expressed by the faculty or authors are their own and not those of ASCP.

None of the organizers of this educational activity (as listed in this section) disclosed a relevant financial relationship.

The following presenters have indicated relationships that have been reviewed and commercial conflicts of interest resolved. In all cases, it was determined that the financial relationship did not relate to the educational assignment or that the commercial entity does not produce, market, re-sell or distribute health care goods or services consumed by, or used on patients. If a presenter is not listed, then he/she had no commercial interest to disclose.

Invited Speaker Disclosures:

J. Charles Jennette, MD, University of North Carolina at Chapel Hill School of Medicine

Commercial Interest: Genentech	Role: Consultant/Speaker	Compensation: Consulting Fees
Commercial Interest: GlaxoSmithKline	Role: Consultant	Compensation: Consulting Fees
Commercial Interest: Amicus Therapeutics	Role: Consultant	Compensation: Consulting Fees

Michael Prystowsky, MD, PhD, Albert Einstein College of Medicine of Yeshiva University

Commercial Interest: G2 Intelligence	Role: Speaker	Compensation: Honorarium
--------------------------------------	---------------	--------------------------

Thomas Wheeler, MD, Baylor College of Medicine

Commercial Interest: DigiPath	Role: Advisory Board	Compensation: Stock Options
-------------------------------	----------------------	-----------------------------

PLEASE NOTE:

Please refer to the APC Meeting Evaluation and CME Application Workbook for a consolidated list of sessions that are eligible for *AMA PRA Category 1 Credit(s)*TM. APC, PRODS and UMEDS sessions are eligible for *AMA PRA Category 1 Credit(s)*TM except where noted in the meeting program. PDAS and GMEAS sessions are not eligible for *AMA PRA Category 1 Credit(s)*TM. Visiting exhibits is not an approved continuing medical education activity. Most meals are not approved for continuing medical education credit; however, some special breakfasts and lunches that have educational content are eligible for Continuing Medical Education credit as noted in your APC Meeting Evaluation and CME Application Workbook. The meeting program states those events that are not a Continuing Medical Education activity.



Association of Pathology Chairs
"Promoting Excellence in Academic Pathology"

APC Mission Statement

The Association of Pathology Chairs serves as the voice of academic pathology. The mission of the APC is to provide leadership and to advocate for the dynamic discipline of pathology. The APC provides education, training, information resources and networking opportunities for chairs, residency program directors, undergraduate medical educators, department administrators, and graduate program coordinators. For more information, visit www.apcprods.org.

CME Organizing Committee for the 2013 Annual Meeting

PRESIDENT-ELECT

Donald Karcher, MD

The George Washington University

PRESIDENT

Ann Thor, MD

University of Colorado at Denver

PAST PRESIDENT

Peter Jensen, MD

University of Utah

SECRETARY-TREASURER

Tristram Parslow, MD, PhD

Emory University

COUNCILOR-AT-LARGE

Dani Zander, MD

Penn State University

CHAIR, Undergraduate Medical Education Committee

Michael Prystowsky, MD, PhD

Albert Einstein College of Medicine

CHAIR, Graduate Medical Education Committee

Peter Kragel, MD

East Carolina University

CHAIR, Research Committee

Brian Smith, MD

Yale University

CHAIR, Practice & Management Committee

Barbara Ducatman, MD

West Virginia University

CHAIR, Advocacy Committee

Daniel Remick, MD

Boston University

CHAIR, PRODS Section (Residency Program Directors)

Wesley Naritoku, MD, PhD

University of Southern California

CHAIR, UMEDS Section (Undergraduate Medical Educators)

Richard Conran, MD, PhD, JD

Uniformed Services University of the Health Sciences

CME Administrator for the APC 2013 Annual Meeting

Priscilla Markwood, CAE

Executive Director, Association of Pathology Chairs

Seaport Boston Hotel, Boston Massachusetts - July 9-12, 2013

To submit your evaluation for Continuing Medical Education credit, please complete, detach and send by fax (301-576-5156), email (info@apcprods.org) or mail (Association of Pathology Chairs, 9650 Rockville Pike, Bethesda, MD 20814), the following CME Evaluation form by September 15, 2013. If you have not already registered for CME, please ask the registration desk at the meeting for an application form or call 301-634-7880 or email info@apcprods.org.

First Name: _____ M.I. ____ Last Name: _____
 Degree(s) (check all that apply) MD DO DVM PhD Other Degrees: _____
 Institution: _____
 Department: _____
 Address: _____
 City: _____ State: _____ Zipcode: _____
 United States: Canada: Other Country: _____
 Telephone: _____ Email: _____

Tuesday, July 9, 2013

Pre-Meeting Workshop: Live or Let Die: Clinical Informatics as a Transformative Discipline for Pathologists in the New Era of Value-Based Health Care *Chairs/PRODS/PDAS/UMEDS/GMEAS Session 3:00 pm – 6:00 pm*

(CME Hours: 3.0)

SPEAKERS: J. Crawford, P. Chen, F. Elevelitch

<p>Educational Objectives:</p> <ul style="list-style-type: none"> <input type="checkbox"/> Exceeded Expectations <input type="checkbox"/> Fully Met <input type="checkbox"/> Partially Met <input type="checkbox"/> Poorly Met <input type="checkbox"/> Did not attend 	<p>Comments:</p>
--	-------------------------

Wednesday, July 10, 2013

Primer on Health Care Financing, Health Care Payment and Delivery Models, and Health Care Delivery Management for Pathologists *Joint Chairs/PRODS/UMEDS/PDAS/GMEAS Session 8:00 – 11:00 am*

(CME Hours: 2.5)

SPEAKERS: D. Karcher, S. Black-Schaffer, J. Crawford, P. Chen

<p>Educational Objectives:</p> <ul style="list-style-type: none"> <input type="checkbox"/> Exceeded Expectations <input type="checkbox"/> Fully Met <input type="checkbox"/> Partially Met <input type="checkbox"/> Poorly Met <input type="checkbox"/> Did not attend 	<p>Comments:</p>
--	-------------------------

The “new” roles for pathologists in the era of accountable/coordinated and patient-centered care

Joint Chairs/PRODS/UMEDS/GMEAS Session 12:30 pm – 2:30 pm

(CME Hours: 2.0)

SPEAKERS: T. Wheeler, L. E. Herriman, C. Schuerch, M. Zutter, A. Carter, R. Hoffman, M. Rendi

<p>Educational Objectives:</p> <ul style="list-style-type: none"> <input type="checkbox"/> Exceeded Expectations <input type="checkbox"/> Fully Met <input type="checkbox"/> Partially Met <input type="checkbox"/> Poorly Met <input type="checkbox"/> Did not attend 	<p>Comments:</p>
--	-------------------------

Pathology and Clinical Outcomes Research Session *Chairs* 3:00 pm – 5:00 pm

(CME Hours: 2.0)

SPEAKERS: B. Smith, A. Bonham, M. Laposata, R. Dhir, J. Musser

<p>Educational Objectives:</p> <ul style="list-style-type: none"> <input type="checkbox"/> Exceeded Expectations <input type="checkbox"/> Fully Met <input type="checkbox"/> Partially Met <input type="checkbox"/> Poorly Met <input type="checkbox"/> Did not attend 	<p>Comments:</p>
--	-------------------------

- OR -

Legal Aspects of Medical Education *PRODS/UMEDS/GMEAS Joint Session* 3:00 pm – 5:30 pm

(CME Hours: 2.5)

SPEAKERS: J. Padmore, C.B. Alexander, R. Conran, A. Jones, S. Powell

<p>Educational Objectives:</p> <ul style="list-style-type: none"> <input type="checkbox"/> Exceeded Expectations <input type="checkbox"/> Fully Met <input type="checkbox"/> Partially Met <input type="checkbox"/> Poorly Met <input type="checkbox"/> Did not attend 	<p>Comments:</p>
--	-------------------------

Thursday, July 11, 2013

Joint Chairs/PDAS Session 8:00 am – 10:00 am

(CME Hours: 2.0)

SPEAKERS: B. Ducatman, J. Crawford, R. Hunter, S. Black-Schaffer, P. Chen, M. Prystowsky

<p>Educational Objectives:</p> <ul style="list-style-type: none"> <input type="checkbox"/> Exceeded Expectations <input type="checkbox"/> Fully Met <input type="checkbox"/> Partially Met <input type="checkbox"/> Poorly Met <input type="checkbox"/> Did not attend 	<p>Comments:</p>
--	-------------------------

- OR -

Joint *NEW* PRODS/GMEAS Session 8:00 am – 10:00 am

(CME Hours: 2.0)

SPEAKERS: R. Johnson, J. Iezzoni, L. Thorsen, W. Naritoku, S. Nestler

<p>Educational Objectives:</p> <ul style="list-style-type: none"> <input type="checkbox"/> Exceeded Expectations <input type="checkbox"/> Fully Met <input type="checkbox"/> Partially Met <input type="checkbox"/> Poorly Met <input type="checkbox"/> Did not attend 	<p>Comments:</p>
--	-------------------------

- OR -

Social Media in Medical School Education UMEDS Session 8:00 am – 10:00 am

(CME Hours: 2.0)

SPEAKERS: A. Martinez-Aleman, M. Terrell

<p>Educational Objectives:</p> <ul style="list-style-type: none"> <input type="checkbox"/> Exceeded Expectations <input type="checkbox"/> Fully Met <input type="checkbox"/> Partially Met <input type="checkbox"/> Poorly Met <input type="checkbox"/> Did not attend 	<p>Comments:</p>
--	-------------------------

Joint Advocacy Session Chairs/PRODS/PDAS/UMEDS 10:30 am – 12:30 pm

(CME Hours: 2.0)

SPEAKERS: J. Madara, D. Remick, D. Zander, R. Johnson, R. Lorenz, S. Kroft, J. Musser, P. Humphrey,
S. Robboy, J. Myers

<p>Educational Objectives:</p> <ul style="list-style-type: none"> <input type="checkbox"/> Exceeded Expectations <input type="checkbox"/> Fully Met <input type="checkbox"/> Partially Met <input type="checkbox"/> Poorly Met <input type="checkbox"/> Did not attend 	<p>Comments:</p>
--	-------------------------

CONCURRENT DISCUSSION GROUPS - Workforce Issues in Pathology and Laboratory Medicine

Discussion Group #1 (UME) 12:30 pm to 2:00 pm

(CME Hours: 1.5)

SPEAKERS: M. Magid, B. Magnani, M. Prystowsky

<p>Educational Objectives:</p> <ul style="list-style-type: none"> <input type="checkbox"/> Exceeded Expectations <input type="checkbox"/> Fully Met <input type="checkbox"/> Partially Met <input type="checkbox"/> Poorly Met <input type="checkbox"/> Did not attend 	<p>Comments:</p>
--	-------------------------

- OR -

Discussion Group #2 (GME) 12:30 pm to 2:00 pm

(CME Hours: 1.5)

SPEAKERS: R. Johnson, P. Kragel, S. Powell

<p>Educational Objectives:</p> <ul style="list-style-type: none"> <input type="checkbox"/> Exceeded Expectations <input type="checkbox"/> Fully Met <input type="checkbox"/> Partially Met <input type="checkbox"/> Poorly Met <input type="checkbox"/> Did not attend 	<p>Comments:</p>
--	-------------------------

- OR -

Discussion Group #3 (GME, UME) 12:30 pm to 2:00 pm

(CME Hours: 1.5)

SPEAKERS: R. Conran, R. Hoffman, W. Naritoku

<p>Educational Objectives:</p> <ul style="list-style-type: none"> <input type="checkbox"/> Exceeded Expectations <input type="checkbox"/> Fully Met <input type="checkbox"/> Partially Met <input type="checkbox"/> Poorly Met <input type="checkbox"/> Did not attend 	<p>Comments:</p>
--	-------------------------

- OR -

Discussion Group #4 (GME) 12:30 pm to 2:00 pm

(CME Hours: 1.5)

SPEAKERS: C. B. Alexander, S. Nestler

<p>Educational Objectives:</p> <ul style="list-style-type: none"> <input type="checkbox"/> Exceeded Expectations <input type="checkbox"/> Fully Met <input type="checkbox"/> Partially Met <input type="checkbox"/> Poorly Met <input type="checkbox"/> Did not attend 	<p>Comments:</p>
--	-------------------------

- OR -

Discussion Group #5 (P&M) 12:30 pm to 2:00 pm

(CME Hours: 1.5)

SPEAKERS: D. Booker, B. Ducatman

<p>Educational Objectives:</p> <ul style="list-style-type: none"> <input type="checkbox"/> Exceeded Expectations <input type="checkbox"/> Fully Met <input type="checkbox"/> Partially Met <input type="checkbox"/> Poorly Met <input type="checkbox"/> Did not attend 	<p>Comments:</p>
--	-------------------------

- OR -

Discussion Group #6 (P&M, GME, UME) 12:30 pm to 2:00 pm

(CME Hours: 1.5)

SPEAKERS: B. Kirby, S. Kroft

<p>Educational Objectives:</p> <ul style="list-style-type: none"> <input type="checkbox"/> Exceeded Expectations <input type="checkbox"/> Fully Met <input type="checkbox"/> Partially Met <input type="checkbox"/> Poorly Met <input type="checkbox"/> Did not attend 	<p>Comments:</p>
--	-------------------------

- OR -

Discussion Group #7 (Research, P&M) 12:30 pm to 2:00 pm

(CME Hours: 1.5)

SPEAKERS: J. Hunt, M. Laposata

<p>Educational Objectives:</p> <ul style="list-style-type: none"> <input type="checkbox"/> Exceeded Expectations <input type="checkbox"/> Fully Met <input type="checkbox"/> Partially Met <input type="checkbox"/> Poorly Met <input type="checkbox"/> Did not attend 	<p>Comments:</p>
--	-------------------------

- OR -

Discussion Group #8 (Research) 12:30 pm to 2:00 pm

(CME Hours: 1.5)

SPEAKERS: J. Golden, B. Smith

<p>Educational Objectives:</p> <ul style="list-style-type: none"> <input type="checkbox"/> Exceeded Expectations <input type="checkbox"/> Fully Met <input type="checkbox"/> Partially Met <input type="checkbox"/> Poorly Met <input type="checkbox"/> Did not attend 	<p>Comments:</p>
--	-------------------------

CONCURRENT CHAIR COMMITTEE MEETINGS

GME Committee Meeting 2:30 pm – 4:00 pm (CME Hours: 1.5)

MODERATOR: P. Kragel

<p>Educational Objectives:</p> <ul style="list-style-type: none"> <input type="checkbox"/> Exceeded Expectations <input type="checkbox"/> Fully Met <input type="checkbox"/> Partially Met <input type="checkbox"/> Poorly Met <input type="checkbox"/> Did not attend 	<p>Comments:</p>
--	-------------------------

- OR -

Practice & Management Committee Meeting 2:30 pm – 4:00 pm (CME Hours: 1.5)

MODERATOR: B. Ducatman

Educational Objectives: <input type="checkbox"/> Exceeded Expectations <input type="checkbox"/> Fully Met <input type="checkbox"/> Partially Met <input type="checkbox"/> Did not attend	Comments:
---	------------------

- OR -

Research Committee Meeting 2:30 pm – 4:00 pm (CME Hours: 1.5)

MODERATOR: B. Smith

Educational Objectives: <input type="checkbox"/> Exceeded Expectations <input type="checkbox"/> Fully Met <input type="checkbox"/> Partially Met <input type="checkbox"/> Did not attend	Comments:
---	------------------

- OR -

UME Committee Meeting 2:30 pm – 4:00 pm (CME Hours: 1.5)

MODERATOR: M. Prystowsky

Educational Objectives: <input type="checkbox"/> Exceeded Expectations <input type="checkbox"/> Fully Met <input type="checkbox"/> Partially Met <input type="checkbox"/> Did not attend	Comments:
---	------------------

- OR -

PRODS Plenary IV Session 2:30 pm – 4:00 pm

(CME Hours: 1.5)

SPEAKERS: S. Nestler, C. B. Alexander, D. Carpenter, M. Furlong, L. Dixon, W. Glass, K. Gyure, E. Hattab, A. Rao, A. Siddiqi, K. Theil, M. Yared, N. Zafar

Educational Objectives: <input type="checkbox"/> Exceeded Expectations <input type="checkbox"/> Fully Met <input type="checkbox"/> Partially Met <input type="checkbox"/> Poorly Met <input type="checkbox"/> Did not attend	Comments:
--	------------------

- OR -

Innovations in Pathology Education *UMEDS Session* 2:30 pm – 4:00 pm

(CME Hours: 1.5)

SPEAKERS: P. Anderson, R. Geiss, A. Lin, M. Husain, H.J. Williams

Educational Objectives: <input type="checkbox"/> Exceeded Expectations <input type="checkbox"/> Fully Met <input type="checkbox"/> Partially Met <input type="checkbox"/> Poorly Met <input type="checkbox"/> Did not attend	Comments:
--	------------------

Laboratory Medicine and Genomics *UMEDS Session* 4:00 pm – 5:30 pm

(CME Hours: 1.5)

SPEAKERS: J. Atkinson, M. Magid, M, Prystowsky, B. Smith

<p>Educational Objectives:</p> <ul style="list-style-type: none"> <input type="checkbox"/> Exceeded Expectations <input type="checkbox"/> Fully Met <input type="checkbox"/> Partially Met <input type="checkbox"/> Poorly Met <input type="checkbox"/> Did not attend 	<p>Comments:</p>
--	-------------------------

Open Forum: Peer-to-Peer Exchange *UMEDS Session* 5:30 pm – 6:00 pm

(CME Hours: 0.5)

SPEAKER: R. Conran

<p>Educational Objectives:</p> <ul style="list-style-type: none"> <input type="checkbox"/> Exceeded Expectations <input type="checkbox"/> Fully Met <input type="checkbox"/> Partially Met <input type="checkbox"/> Poorly Met <input type="checkbox"/> Did not attend 	<p>Comments:</p>
--	-------------------------

Friday, July 12, 2013

Leadership Development & Diversity Ad Hoc Committee Session 7:30 am – 8:30 am

(CME Hours: 1.0)

SPEAKERS: A. Thor, P. Thomas

<p>Educational Objectives:</p> <ul style="list-style-type: none"> <input type="checkbox"/> Exceeded expectations <input type="checkbox"/> Fully Met <input type="checkbox"/> Partially Met <input type="checkbox"/> Poorly Met <input type="checkbox"/> Did not attend 	<p>Comments:</p>
--	-------------------------

- OR -

PRODS/GMEAS General Information/Updates 7:30 am – 10:20 am

(CME Hours 2.75)

SPEAKERS: B. Smoller, R. Johnson, J. Iezzoni, L. Thorsen, L. Ling

<p>Educational Objectives:</p> <ul style="list-style-type: none"> <input type="checkbox"/> Exceeded expectations <input type="checkbox"/> Fully Met <input type="checkbox"/> Partially Met <input type="checkbox"/> Poorly Met <input type="checkbox"/> Did not attend 	<p>Comments:</p>
--	-------------------------

- OR -

Benchmarking Academic Pathologists *Joint CHAIRS/PDAS Session* 8:30 am – 10:00 am

(CME Hours: 1.5)

SPEAKERS: B. Ducatman, D. Remick, D. Wilkinson, J. C. Jennette

<p>Educational Objectives:</p> <ul style="list-style-type: none"> <input type="checkbox"/> Exceeded Expectations <input type="checkbox"/> Fully Met <input type="checkbox"/> Partially Met <input type="checkbox"/> Poorly Met <input type="checkbox"/> Did not attend 	<p>Comments:</p>
--	-------------------------

Pathology Workforce Chairs Session 10:15 am – 11:45 am

(CME Hours: 1.5)

SPEAKERS: D. Karcher, R. Friedberg, S. Kroft, J. Musser

<p>Educational Objectives:</p> <ul style="list-style-type: none"> <input type="checkbox"/> Exceeded Expectations <input type="checkbox"/> Fully Met <input type="checkbox"/> Partially Met <input type="checkbox"/> Poorly Met <input type="checkbox"/> Did not attend 	<p>Comments:</p>
--	-------------------------

- OR -

PRODS Plenary V Session 10:20 am – 12:00 pm

(CME Hours: 1.75)

SPEAKERS: R. Haspel, H. Rinder, C. B. Alexander, R. Wu, J. Stall, D. Carpenter

<p>Educational Objectives:</p> <ul style="list-style-type: none"> <input type="checkbox"/> Exceeded Expectations <input type="checkbox"/> Fully Met <input type="checkbox"/> Partially Met <input type="checkbox"/> Poorly Met <input type="checkbox"/> Did not attend 	<p>Comments:</p>
--	-------------------------

Overall Meeting Evaluation:

My objectives in attending this meeting included: (check all that apply)

- Learning more about workforce development and realignment to support current and new skill sets required to practice Pathology and Laboratory Medicine now and into the future.
- Learning the newest advances in research and implementation of cutting edge practice tools, such as diagnostics, genomic medicine, and bioinformatics; and their implications on future healthcare delivery.
- Learning the newest approaches to the development of educational programs and curricula for the training of medical students, residents, fellows, and senior pathologists.
- Making contacts to help me meet new educational objectives or duties.
- Increasing the quality of patient care provided through my pathology department.

My objectives were fulfilled: Yes No

<p>Comments:</p>

Rank the following statements:

The meeting content reflected the advertised title and description:

- Strongly Agree Agree Disagree Strongly Disagree

The meeting met the learning objectives listed:

- Strongly Agree Agree Disagree Strongly Disagree

The content was valuable and met your needs:

- Strongly Agree Agree Disagree Strongly Disagree

The content was free from commercial bias:

- Strongly Agree Agree Disagree Strongly Disagree

The content was well-organized:

- Strongly Agree Agree Disagree Strongly Disagree

The level of difficulty of the content was appropriate:

- Strongly Agree Agree Disagree Strongly Disagree

The content had practical application to your practice:

- Strongly Agree Agree Disagree Strongly Disagree

Comments:

How would you rate this educational activity overall - 1 (Lowest) to 10 (Highest):

- 1 2 3 4 5 6 7 8 9 10

Would you recommend this meeting to colleagues: Yes No

Rate the following general logistical points:

- | | | | | |
|-----------------------------------|------------------------------------|-------------------------------|-------------------------------|-------------------------------|
| Ease of travel: | <input type="checkbox"/> Excellent | <input type="checkbox"/> Good | <input type="checkbox"/> Fair | <input type="checkbox"/> Poor |
| Hotel accommodations: | <input type="checkbox"/> Excellent | <input type="checkbox"/> Good | <input type="checkbox"/> Fair | <input type="checkbox"/> Poor |
| Food and beverage: | <input type="checkbox"/> Excellent | <input type="checkbox"/> Good | <input type="checkbox"/> Fair | <input type="checkbox"/> Poor |
| Meeting environment (city, site): | <input type="checkbox"/> Excellent | <input type="checkbox"/> Good | <input type="checkbox"/> Fair | <input type="checkbox"/> Poor |
| Audiovisual: | <input type="checkbox"/> Excellent | <input type="checkbox"/> Good | <input type="checkbox"/> Fair | <input type="checkbox"/> Poor |
| Registration desk: | <input type="checkbox"/> Excellent | <input type="checkbox"/> Good | <input type="checkbox"/> Fair | <input type="checkbox"/> Poor |

Comments:

What suggestions do you have for improvement of this meeting?

Do you envision making changes in your setting as a result of information you learned at this meeting? Yes No

If yes, list the changes you envision and how you might implement them:

Change #1:

How will you implement Change #1?

Change #2:

How will you implement Change #2?

Change #3:

How will you implement Change #3?

What barriers might prevent you from making the above changes?

IMPORTANT: Please complete all areas of this CME Evaluation to the best of your ability. Partially completed forms will not be accepted for credit. To submit your evaluation for Continuing Medical Education credit, please complete, detach and send by fax (301-576-5156), email (info@apcprods.org) or mail (Association of Pathology Chairs, 9650 Rockville Pike, Bethesda, MD 20814), by September 15, 2013.

**Association of Pathology Chairs 2013 Annual Meeting
Participant List**

Seena Aisner (CHAIR)
UMDNJ-New Jersey
aisnersc@umdnj.edu

C. Bruce Alexander (PRODS)
Univ. of Alabama, Birmingham
cba@uab.edu

Michael Allard (CHAIR)
Univ. of British Columbia
mike.allard@pathology.ubc.ca

Vasuki Anandan (PRODS)
University of Toledo
vasuki.anandan@utoledo.edu

Peter Anderson (UMEDS)
Univ. of Alabama, Birmingham
pga@uab.edu

Raymond Anderson (GMEAS)
Tufts Medical Center
randerson@tuftsmedicalcenter.org

Scott Anderson (PRODS)
University of Vermont
scott.anderson@vtmednet.org

Chris Andry (PDAS)
Boston Medical Center
chris.andry@bmc.org

Douglas Anthony (CHAIR)
Lifespan/Rhode Island Hospital
douglas_anthony@brown.edu

Jaber Aslanzadeh (PRODS)
Hartford Hospital
jaslanz@harthosp.org

Kristen Atkins (PRODS)
University of Virginia
kaa2p@virginia.edu

James Atkinson (UMEDS)
Vanderbilt University
james.atkinson@vanderbilt.edu

Jennifer Bacon (UMEDS)
Penn State Hershey Medical Center
jbaccon@hmc.psu.edu

John Baci (PDAS)
Boston Childrens Hospital
john.baci@childrens.harvard.edu

Cheryl Baker-Stasiak (PDAS)
West Virginia University
cstasiak@hsc.wvu.edu

Nicholas Batalis (PRODS)
Medical Univ. of South Carolina
nbatalis@gmail.com

Brenda Batts (PDAS)
Wayne State University
bbatts@med.wayne.edu

Frederick Behm (CHAIR)
Univ. of Illinois at Chicago
fredbehm@uic.edu

Achyut Bhattacharyya (CHAIR)
University of Arizona
maureend@email.arizona.edu

Candice Black (PRODS)
Dartmouth-Hitchcock MC
candice.c.black@hitchcock.org

William Black-Schaffer (PRODS)
Massachusetts General Hospital
blackschaffer@partners.org

Colin Bloodworth (GMEAS)
Scott & White Healthcare/Texas A&M
cbloodworth@sw.org

John Bolg (PDAS)
University of Toledo
john.bolg@utoledo.edu

Ann Bonham (Other)
Assoc. of American Medical Colleges
abonham@aamc.org

David Booker (Other)
Trinity Hospital of Augusta
dlbooker@labmedpc.com

Michael Borowitz (UMEDS)
Johns Hopkins University
mborowit@jhmi.edu

Don Bowen (PDAS)
Univ. of Alabama at Birmingham
bowen@uab.edu

Patricia Braund (GMEAS)
University of Colorado
patricia.braund@ucdenver.edu

David Brink (PRODS)
St. Louis University
brinkds@slu.edu

Alexandra Brown (PRODS)
Univ. of Mississippi Medical Center
ashaye@umc.edu

Gary Brown (PDAS)
University of Colorado
gary.brown@ucdenver.edu

Marie Brown (PDAS)
Mayo Clinic
brown.marie@mayo.edu

Frank Butros (PDAS)
Univ. of Virginia Health System
fab3a@virginia.edu

Evan Cadoff (CHAIR)
UMDNJ-Robert Wood Johnson
cadoff@umdnj.edu

Carolyn Cambor (PRODS)
University of Pennsylvania
camborc@uphs.upenn.edu

Mary Carayannopoulos (PRODS)
UMDNJ-Robert Wood Johnson
carayamo@umdnj.edu

Danielle Carpenter (Other)
Washington University
dcarpenter@path.wustl.edu

Alexis Carter (Other)
Emory University
abcart2@emory.edu

Jeffrey Casterline (PDAS)
Drexel College of Medicine
jeffrey.casterline@drexelmed.edu

Michael Caton (PDAS)
Univ. of California-San Francisco
michael.caton@ucsf.edu

Stephen Cavalieri (PRODS)
Creighton University
stephencavalieri@creighton.edu

Sandra Cerda (PRODS)
Boston Medical Center
sandra.cerda@bmc.org

Robert Challender (PDAS)
University of Pennsylvania
robert.challender@uphs.upenn.edu

Anthony Chang (PRODS)
University of Chicago
anthony.chang@uchospitals.edu

Philip Chen (Other)
University of Miami
pchen@med.miami.edu

**Association of Pathology Chairs 2013 Annual Meeting
Participant List**

Deborah Chute (PRODS)
Cleveland Clinic
dchute1@gmail.com

Michael Clare-Salzler (CHAIR)
University of Florida
salzler@ufl.edu

Frederic Clayton (UMEDS)
University of Utah
fred.clayton@path.utah.edu

Charles Clevenger (CHAIR)
Virginia Commonwealth Univ.
revans@mcvh-vcu.edu

Franklin Cockerill (CHAIR)
Mayo Clinic
cockerill.franklin@mayo.edu

Michael Cohen (CHAIR)
University of Utah
michael.cohen@aruplab.com

Stanley Cohen (Senior Fellow)
UMDNJ-New Jersey Medical School
cohenst@umdnj.edu

Jonathan Cooper (PDAS)
Univ. of Maryland SOM
jcooper@som.umaryland.edu

Ruth Cooper (PDAS)
Yale University
ruth.cooper@yale.edu

Robert Corona (CHAIR)
SUNY Upstate Medical University
coronar@upstate.edu

Richard Cote (CHAIR)
University of Miami
rcote@med.miami.edu

James Crawford (CHAIR)
North Shore LIJ Health System
jcrawford1@nshs.edu

Michael Creer (PRODS)
Penn State Medical Center
No email provided

Luisa Cruz (GMEAS)
Mount Sinai Med Ctr.
luisa.cruz@msmc.com

William Daley (UMEDS)
University of Mississippi
daleywp@comcast.net

Michael Dardik (PRODS)
St. Barnabas Medical Center
mdardik@barnabashealth.org

Brian Datnow (PRODS)
Univ. of California-San Diego
bdatnow@ucsd.edu

Gregory Davis (Other)
Univ. of Alabama at Birmingham
gdavis@uab.edu

Julia de la Garza (UMEDS)
New York Medical College
julia_delagarza@nymc.edu

Marie DeFrances (UMEDS)
Univ. of Pittsburgh Medical Ctr.
defrancesme@upmc.edu

Janet Delwiche (GMEAS)
University of Iowa
janet-delwiche@uiowa.edu

Barry DeYoung (Other)
Wake Forest School of Medicine
bdeyoung@wakehealth.edu

Rajiv Dhir (Other)
Univ. of Pittsburgh Medical Ctr.
dhirr@upmc.edu

Nicholas Dietz (PRODS)
Creighton University
nickdietz@creighton.edu

Lisa Dixon (PRODS)
University of Florida
dixolr@pathology.ufl.edu

William Dod (PDAS)
Duke University
tom.dod@duke.edu

Michelle Dolan (PRODS)
University of Minnesota
dolan009@umn.edu

Barbara Ducatman (CHAIR)
West Virginia University
bducatman@hsc.wvu.edu

Judy Dye (PDAS)
Univ. of Arizona Med. Center
judy.dye@uahealth.com

Peter Dysert (CHAIR)
Baylor University Medical Center
peterd@baylorhealth.edu

John Eble (CHAIR)
Indiana University
jebile@iupui.edu

Frank Elevitch (Other)
Health Care Engineering
felevitch@aol.com

Ronald Elin (CHAIR)
Univ. of Louisville
rjelin01@louisville.edu

Judy Elleson (PDAS)
Northwestern University
jelleson@nmff.org

Michael Esposito (PRODS)
Hofstra North Shore LIJ SOM
sgraziano@nshs.edu

Hayley Evans (GMEAS)
University of Chicago
hayley@uic.edu

John Fallon (CHAIR)
New York Medical College
john_fallon@nymc.edu

D. Greer Falls (PRODS)
Georgia Regents University
gfalls@gru.edu

Garth Farga (PRODS)
University of Kansas
gfraga@kumc.edu

Kristin Fiebelkorn (PRODS)
Univ. of Texas- Health Science Ctr.
fiebelkorn@uthscsa.edu

Mary Fiel-Gan (PRODS)
Hartford Hospital
mfiel@harthosp.org

James Fine (CHAIR)
University of Washington
jsfine@uw.edu

Adolfo Firpo (PRODS)
Icahn SOM at Mount Sinai
adolfo.firpo@mssm.edu

Valerie Fitzhugh (PRODS)
UMDNJ-New Jersey
fitzhuva@umdnj.edu

Melina Flanagan (UMEDS)
West Virginia University
mflanagan@hsc.wvu.edu

**Association of Pathology Chairs 2013 Annual Meeting
Participant List**

Henry Flax (GMEAS)
SUNY Downstate Medical Center
henry.flax@downstate.edu

Roxanne Florence (PRODS)
Baystate Medical Center
roxanne.florence@bhs.org

Adriana Flores (GMEAS)
Harbor-UCLA Medical Center
adflores@dhs.lacounty.gov

Theresa Ford (Other)
Sakura Finetek USA
tford@sakuraus.com

Karen Frank (Other)
National Institutes of Health
karen.frank@nih.gov

Corrine Freking (GMEAS)
North Shore Univ. Health System
cfreking@northshore.org

Richard Friedberg (CHAIRS)
Baystate Medical Center
richard.friedberg@baystatehealth.org

Andreas Friedl (CHAIR)
University of Wisconsin
afriedl@wisc.edu

Mark Friedman (PRODS)
St. Luke's Roosevelt Hospital
markfriedman@chnpnet.org

Christine Fuller (PRODS)
Virginia Commonwealth University
cfuller@mcvh-vcu.edu

William Funkhouser (Other)
University of North Carolina
Bill_Funkhouser@med.unc.edu

Leo Furcht (CHAIR)
University of Minnesota
furch001@umn.edu

Mary Furlong (PRODS)
Medstar Georgetown Univ. Hospital
furlonma@georgetown.edu

Billie Fyfe (PRODS)
UMDNJ-Robert Wood Johnson
fyfekibs@umdnj.edu

Regina Gandour-Edwards (UMEDS)
University of California-Davis
regina.gandour-edwards@ucdmc.ucdavis.edu

Roger Geiss (UMEDS)
Univ. of Illinois College of Medicine
rgeiss@uic.edu

Ryan Gill (PRODS)
Univ. of California at San Francisco
ryan.gill@ucsf.edu

William Glass (PRODS)
Univ. of Texas Houston Med. School
william.f.glass@uth.tmc.edu

Jeffrey Golden (CHAIR)
Brigham and Women's Hospital
jagolden@partners.org

Fred Gorstein (CHAIR)
Thomas Jefferson University
fred.gorstein@jefferson.edu

Avrum Gotlieb (Other)
University of Toronto
avrum.gotlieb@utoronto.ca

Sandra Grear (CHAIR)
College of American Pathologists
sgrear@cap.org

Ralph Green (Senior Fellow)
University of California-Davis
ralph.green@ucdmc.ucdavis.edu

Margaret Grimes (UMEDS)
Virginia Commonwealth University
mgrimes@vcu.edu

Steven Gudowski (PDAS)
Thomas Jefferson University
steven.gudowski@jefferson.edu

Leana Guerin (PRODS)
University of Iowa
leana-guerin@uiowa.edu

Kymerly Gyure (PRODS)
West Virginia University
kgyure@hsc.wvu.edu

Cheryl Hanau (CHAIR)
Drexel College of Medicine
chanau@drexelmed.edu

Tony Hang (PDAS)
Univ. of California, San Francisco
hangt@labmed2.ucsf.edu

Elizabeth Hansell (PDAS)
Medical University of South Carolina
hansellb@musc.edu

Clifford Harding (CHAIR)
Case Western Reserve University
cvh3@cwru.edu

William Hardman (UMEDS)
Georgia Regents University
whardman@uga.edu

Richard Haspel (PRODS)
Beth Israel Deaconess Med Ctr.
rhaspel@bidmc.harvard.edu

Eyas Hattab (PRODS)
Indiana University
ehattab@iupui.edu

Reid Heffner (UMEDS)
University at Buffalo
rheffner@buffalo.edu

Richard Hegele (CHAIR)
University of Toronto
richard.hegele@utoronto.ca

Josefine Heim-Hall (PRODS)
Univ. of Texas-Health Science Ctr.
heim@uthscsa.edu

Vicky Hernandez (PDAS)
Univ. of Texas Southwestern Med. Ctr.
vicky.hernandez@utsouthwestern.edu

L. Eleanor Herriman (Other)
G2 Intelligence
eherriman@g2intelligence.com

Jay Hess (CHAIR)
Univ. of Michigan Medical School
jayhess@umich.edu

William Hickey (Senior Fellow)
Geisel Medical School
William.Hickey@dartmouth.edu

Charles Hill (PRODS)
Emory University SOM
cehill@emory.edu

Susan Hill (PDAS)
Indiana Univ.
suehill@iupui.edu

Brant Hilson (PDAS)
Univ. of Texas, Houston
brant.m.hilson@uth.tmc.edu

Robert Hoffman (PRODS)
Vanderbilt University
robert.hoffman@vanderbilt.edu

**Association of Pathology Chairs 2013 Annual Meeting
Participant List**

E. Blair Holladay (Other)
American Society for Clinical Path
blair.holladay@ascp.org

Carol Hollstein (GMEAS)
Loma Linda Univ. Medical Center
chollstein@llu.edu

Peter Howanitz (PRODS)
SUNY Downstate Medical Center
peter.howanitz@downstate.edu

Pamela Howard (GMEAS)
University of Michigan
pamh@umich.edu

Sara Howen (GMEAS)
Mayo Clinic
howen.sara@mayo.edu

Diana Hsu (PDAS)
Univ. of California-San Francisco
hsud@labmed2.ucsf.edu

Jennifer Hunt (CHAIR)
Univ. of Arkansas Medical Sciences
JLHunt@uams.edu

Robert Hunter (CHAIR)
Univ. of Texas- Houston
robert.l.hunter@uth.tmc.edu

Aliya Husain (PRODS)
University of Chicago
aliya.husain@uchospitals.edu

Mujtaba Husain (UMEDS)
University of Central Florida
suzanne.stalvey@ucf.edu

Gloria K. Hutchinson (PRODS)
Baptist Health System
gloria.hutchinson@bhsala.com

John Hutter (PDAS)
Stony Brook Medicine
john.hutter@stonybrookmedicine.edu

Sonya Hwang (PRODS)
Stony Brook Medicine
sonya.hwang@stonybrookmedicine.edu

Julia Iezzoni (PRODS)
University of Virginia
jci8a@Virginia.edu

Kedar Inamdhar (PRODS)
Henry Ford Hosp. Wayne State Univ.
kinamda1@hfhs.org

Olga Ioffe (UMEDS)
University of Maryland
oioffe@umaryland.edu

Humayun Islam (PRODS)
New York Medical College
islamh@wcmc.com

Rachael Jacinto (GMEAS)
Stanford University
rjacinto@stanford.edu

Jeff Jacobs (Other)
American Society for Clinical Path
jeff.jacobs@ascp.org

Katherine Jasnosz (PRODS)
Allegheny General Hospital
kjasnosz@wpahs.org

John Charles Jennette (CHAIR)
University of North Carolina
jcyj@med.unc.edu

Chester Darrell Jennings (CHAIR)
Univ. Kentucky College of Medicine
cdjenn@uky.edu

Chris Jensen (PRODS)
Univ. of Iowa Hospitals and Clinics
lynne-westphal@uiowa.edu

Judy Jensen (PDAS)
Beth Israel Deaconess Med Ctr.
jjensen@bidmc.harvard.edu

Peter Jensen (CHAIR)
University of Utah
allison.boyer@path.utah.edu

Rebecca Johnson (Other)
American Board of Pathology
rljohnson@abpath.org

Allison Jones (GMEAS)
Medstar Georgetown Univ. Hospital
allison.r.jones@gunet.georgetown.edu

Michael Joshi-Guske (PDAS)
Univ. of Florida
guskemj@ufl.edu

Melissa Kahn (PRODS)
Cedars Sinai Med Ctr.
melissa.kahn@cshs.org

Neeraja Kambham (PRODS)
Stanford University
nkambham@stanford.edu

Jason Kang (PRODS)
Loyola University Health System
jakang@lumc.edu

David Kaplan (PRODS)
Univ. Hospitals Case Medical Ctr.
david.kaplan@case.edu

Nitin Karandikar (CHAIR)
University of Iowa
nitin-karandikar@uiowa.edu

Donald Karcher (CHAIR)
George Washington University
dkarcher@mfa.gwu.edu

Karen Kaul (CHAIR)
North Shore Univ. Health System
kkaul@northshore.org

Beverly Kirby (Other)
West Virginia University
bkirby@hsc.wvu.edu

Scott Kirkley (PRODS)
University of Rochester
scott_kirkley@urmc.rochester.edu

Kenneth Klein (Other)
Univ. of Medicine and Dentistry
kklein@umdnj.edu

Doug Knapman (Other)
College of American Pathologists
dknapma@cap.org

Angelina Knott (PDAS)
Univ. of Mississippi Medical Center
aknott@umc.edu

Kristen Kolb (PDAS)
Baystate Medical Center
kristen.kolb@baystatehealth.org

William Koss (PRODS)
Scott & White Memorial Hospital
wkoss@sw.org

Chelle Kozy (GMEAS)
Orlando Health
erika.kozy@orlandohealth.com

Amy Kragel (UMEDS)
Brody School of Medicine
kragela@ecu.edu

Peter Kragel (CHAIR)
East Carolina Univ.-Brody SOM
kragelp@ecu.edu

**Association of Pathology Chairs 2013 Annual Meeting
Participant List**

Clarissa Krinsky (PRODS)
University of New Mexico
ckrinsky@salud.unm.edu

Steven Kroft (Other)
Medical College of Wisconsin
skroft@mcw.edu

Vinay Kumar (CHAIR)
University of Chicago
vkumar@bsd.uchicago.edu

Steven Kuss (PDAS)
Univ. of Nebraska Med Ctr.
skuss@unmc.edu

Will Kyle (PDAS)
The Methodist Hospital
wkyle@tmhs.org

Janice Lage (CHAIR)
Univ. of Mississippi
jlage@umc.edu

Anand Lagoo (PRODS)
Duke University Medical Center
anand.lagoo@duke.edu

Susie Lambert (GMEAS)
Penrose St. Francis Health Services
susielambert@centura.org

Charles Lassman (PRODS)
Univ. of Calif.-Los Angeles
classman@mednet.ucla.edu

Jennifer Laudadio (PRODS)
Univ. of Arkansas for Med. Sciences
Jlaudadio@uams.edu

Martin Lawlor (PDAS)
University of Michigan
lawlorm@med.umich.edu

Jeanne Lay (GMEAS)
University of New Mexico
jlay@salud.unm.edu

Edward Lee (PRODS)
Howard Univ. Hospital
ellee@howard.edu

Elsie Lee (PRODS)
George Washington University
elee@mfa.gwu.edu

John Lee (PRODS)
Northshore
jlee9@northshore.org

Patrick Lento (UMEDS)
New York Medical College
patrick_lento@nymc.edu

Debra Leonard (CHAIR)
Univ. of Vermont COM
debra.leonard@med.uvm.edu

Bruce Levy (PRODS)
University of Illinois-Chicago
bplevy@uic.edu

David Lewin (PRODS)
Medical University of South Carolina
lewin@musc.edu

Jenny Libien (UMEDS)
SUNY Downstate Medical Center
jenny.libien@downstate.edu

Andrea Ligler (PDAS)
Indiana University
aligler@iupui.edu

Amy Lin (UMEDS)
Univ. of Illinois at Chicago
alin@uic.edu

Louis Ling (Other)
ACGME
lling@acgme.org

Mary Lipscomb (Senior Fellow)
University of Colorado
mlyons41@gmail.com

Chen Liu (CHAIR)
University of Florida
liu@pathology.ufl.edu

Teri Longacre (Other)
Stanford University
longacre@stanford.edu

Robin Lorenz (Other)
University of Alabama
rlorenz@uab.edu

David Louis (CHAIR)
Massachusetts General Hospital
dlouis@partners.org

Robert Low (PRODS)
University of Colorado
robert.low@ucdenver.edu

George Lozano (PDAS)
Louisiana State Univ.-Shreveport
jlozan@lsuhsc.edu

David Lucas (PDAS)
University of Michigan
drlucas@med.umich.edu

Fred Lucas (CHAIR)
Univ. of Cincinnati Med. Ctr.
lucasfv@ucmail.uc.edu

Anna Lurz (PDAS)
University at Buffalo
alurz@kaleidahealth.org

Gretchen Lussier (GMEAS)
Baystate Medical Center
gretchen.lussier@bhs.org

Duncan MacIvor (PRODS)
Univ. of Kentucky COM
dma223@uky.edu

Jacqueline Macknis (PRODS)
William Beaumont Hospital
jmacknis@beaumont.edu

Trevor MacPherson (PRODS)
Univ. of Pittsburgh Med College
tmacpherson@mail.magee.edu

James Madara (Other)
American Medical Association
James.Madara@ama-assn.org

Margret Magid (UMEDS)
Icahn Mount Sinai SOM
margret.magid@mountsinai.org

James Malter (CHAIR)
Univ. of Texas Southwestern Med Ctr.
james.malter@utsouthwestern.edu

Pamela Mammarelli (GMEAS)
University of Pennsylvania
pamela.mammarelli@uphs.upenn.edu

Varsha Manucha (PRODS)
Temple University Hospital
varsha.manucha@tuhs.temple.edu

Beth Mapow (PRODS)
Drexel University COM
beth.mapow@drexelmed.edu

LeeTanya Marion-Murray (GMEAS)
Cedars Sinai Med Ctr.
LeeTanya.Marion-Murray@cshs.org

Susan Maygarden (PRODS)
Univ. of North Carolina-Chapel Hill
smaygard@unch.unc.edu

**Association of Pathology Chairs 2013 Annual Meeting
Participant List**

Marilyn McAllister (PDAS)
Rhode Island Hospital
mmcallister@lifespan.org

Susan McCarthy (PDAS)
Univ. of Southern California
susanmcc@usc.edu

Thomas McClintock (Other)
University of Chicago
thomas.krausz@uchospitals.edu

Cindy McCloskey (PRODS)
University of Oklahoma
cindy-mccloskey@ouhsc.edu

Robin McGoey (PRODS)
Louisiana State Univ.-New Orleans
rmcgoe@lsuhsc.edu

Cindy McGrath (UMEDS)
Univ. of Pennsylvania Med. Ctr.
cmcgrath@mail.med.upenn.edu

Linda McGuire (PDAS)
SUNY Downstate Medical Center
linda.mcguire@downstate.edu

Barbara McKenna (PRODS)
University of Michigan
barbmcke@umich.edu

Linda McLean (PDAS)
Univ. of Oklahoma COM
linda-mclean@ouhsc.edu

Diana Medina (PDAS)
Univ. of Texas Health Science Ctr.
medinad@uthscsa.edu

Sarah Meyers (UMEDS)
University of North Dakota
sarah.meyers@med.und.edu

George Michalopoulos (CHAIR)
University of Pittsburgh
michalopoulosgk@upmc.edu

Robert Michel (Other)
Dark Report
labletter@aol.com

Martha Miers (PDAS)
Vanderbilt University
mikael.byrd@vanderbilt.edu

Karen Milakovic (PDAS)
Penn State Hershey Medical Center
kmilakovic@psu.edu

Margaret Miles (PDAS)
Oregon Health & Science University
milesm@ohsu.edu

Douglas Miller (PRODS)
University of Missouri SOM
millerdc@health.missouri.edu

Suzanne Mirra (CHAIR)
SUNY Downstate Medical Center
suzanne.mirra@downstate.edu

Thomas Montine (CHAIR)
University of Washington
tmontine@uw.edu

Edwin Monuki (CHAIR)
University of California Irvine
emonuki@uci.edu

Christopher Moskaluk (CHAIR)
University of Virginia
cam5p@virginia.edu

Amy Moten (GMEAS)
University of Kansas
amoten@kumc.edu

Amy Motta (GMEAS)
University of Utah
amy.motta@aruplab.com

Robert Mrak (CHAIR)
University of Toledo
robert.mrak@utoledo.edu

DesiRae Muirhead (PRODS)
Univ. of San Diego-Sanford SOM
desirae.muirhead@sanfordhealth.org

William Muller (CHAIR)
Northwestern University
wamuller@northwestern.edu

James Musser (CHAIR)
Methodist Hospital
jmmusser@tmhs.org

Jeffrey Myers (Other)
University of Michigan
myerjeff@med.umich.edu

Wesley Naritoku (PRODS)
Univ. of Southern California
naritoku@usc.edu

Ranjana Nawgiri (PRODS)
Univ. of Texas Medical Branch
ranawgir@utmb.edu

Pam Nelson (GMEAS)
Wayne State University SOM
pnelson@med.wayne.edu

Janna Neltner (PRODS)
University of Kentucky
jmhack0@email.uky.edu

Steven Nestler (Other)
ACGME
snestler@acgme.org

Ann Neumann (Other)
College of American Pathologists
kjulius@cap.org

Theresa Norman (GMEAS)
Dartmouth University
theresa.m.norman-goodwin@hitchcock.org

Vania Nose (Other)
Massachusetts General Hospital
vnose@partners.org

Juan Pablo Olano (PRODS)
Univ. of Texas Medical Branch
jolano@utmb.edu

Kristin Olson (UMEDS)
Univ. of California-Davis
kristin.olson@ucdmc.ucdavis.edu

Tammy Olson (GMEAS)
Mayo Clinic
olson.tammy@mayo.edu

Scott Owens (PRODS)
University of Michigan
srowens@umich.edu

Jamie Padmore (Other)
Georgetown University
Jsp35@georgetown.edu

Susan Pagano (GMEAS)
Washington University
spagano@path.wustl.edu

Cheryl Ann Palmer (PRODS)
University of Utah-Pathology
cheryl.palmer@path.utah.edu

Elizabeth Paradowski (GMEAS)
St. Louis University
paradoea@slu.edu

Tristram Parslow (CHAIR)
Emory University
tparslow@emory.edu

**Association of Pathology Chairs 2013 Annual Meeting
Participant List**

William Pastuszak (CHAIR)
Hartford Hospital
wtpastuszak@comcast.net

Stephen Peiper (CHAIR)
Jefferson Medical College
stephen.peiper@jefferson.edu

Robert Penny (Other)
Paradigm
cstill@paradigmdx.org

Yuri Persidsky (CHAIR)
Temple University
yuri.persidsky@tuhs.temple.edu

Lisa Peterson (GMEAS)
University of Utah
lisa.peterson@path.utah.edu

Carol Petito (PRODS)
University of Miami
cpetito@med.miami.edu

Annetta Pierro (GMEAS)
Univ. of California-LA
apierro@mednet.ucla.edu

Jane Pine Wood (Other)
McDonald Hopkins
jwood@mcdonaldhopkins.com

Deborah Powell (Senior Fellow)
University of Minnesota
dpowell@umn.edu

Suzanne Powell (PRODS)
The Methodist Hospital
spowell@tmhs.org

S. Erin Presnell (UMEDS)
Medical Univ. of South Carolina
mconnse@musc.edu

Michael Prystowsky (CHAIR)
Montefiore Medical Center
michael.prystowsky@einstein.yu.edu

Karyn Rae (Other)
Medical Univ. of South Carolina
raek@musc.edu

Thomas Raife (PRODS)
Univ. of Iowa
thomas-raife@uiowa.edu

Petrie Rainey (PRODS)
Univ. of Wash. Dept. of Lab. Med.
pmrainey@uw.edu

Rageshree Ramachandran (UMEDS)
Univ. of California-San Francisco
raga.ramachandran@ucsf.edu

Raj Ramsamooj (PRODS)
Univ. of California-Davis
rajendra.ramsamooj@ucdmc.ucdavis.edu

Erik Ranheim (PRODS)
Univ. of Wisconsin-Dept. of Path
earanheim@wisc.edu

Arundhati Rao (PRODS)
Texas A & M
arao@sw.org

Amy Rapkiewicz (UMEDS)
New York University
rapkia01@med.nyu.edu

Anwar Raza (PRODS)
Loma Linda Univ. Med Ctr.
araza@llu.edu

Robert Reddick (CHAIR)
Univ. of Texas Health Science
reddick@uthscsa.edu

Howard Reisner (UMEDS)
Univ. of North Carolina-Chapel Hill
reisner@med.unc.edu

Mara Rendi (UMEDS)
University of Washington
mararend@uw.edu

Mary Richardson (CHAIR)
Medical University of South Carolina
richardm@musc.edu

Henry Rinder (PRODS)
Yale University
henry.rinder@yale.edu

Nancy Risenhoover (PDAS)
University of New Mexico
nrisenhoover@salud.unm.edu

Stanley Robboy (Senior Fellow)
Duke University
stanley.robboy@duke.edu

Amyn Rojiani (CHAIR)
GRU-Medical College of Georgia
arojiani@gru.edu

Elizabeth Rosaschi (PDAS)
SUNY Upstate Medical University
rosasche@upstate.edu

Jeffrey Ross (CHAIR)
Albany Medical Center
rossj@mail.amc.edu

Kevin Roth (CHAIR)
University of Alabama, Birmingham
karoth@uab.edu

Brian Rudolph (PDAS)
University of Pittsburgh
rudolphb@upmc.edu

Moshe Sadofsky (UMEDS)
Albert Einstein COM
moshe.sadofsky@einstein.yu.edu

Jeffrey Saffitz (CHAIR)
Beth Israel Deaconess Med Ctr.
jsaffitz@bidmc.harvard.edu

Donald Sandlin (GMEAS)
Univ. of Arkansas for Med Sciences
desandlin@uams.edu

Amy Sands (PRODS)
University of Buffalo
asands@buffalo.edu

Samuel Santoro (CHAIR)
Vanderbilt University
samuel.santoro@vanderbilt.edu

Carmen Sarita-Reyes (UMEDS)
Boston Medical Center
carmen.saritareyes@bmc.org

Linda Schiffhauer (UMEDS)
University of Rochester
linda_schiffhauer@urmc.rochester.edu

Alan Schiller (CHAIR)
University of Hawaii
alanls@hawaii.edu

Janet Schmid (PRODS)
Tulane University
jschmid@tulane.edu

Carrie Schneider (PRODS)
Temple University Hospital
carrieschneidermd@gmail.com

Conrad Schuerch (Other)
Geisinger Health System
cschuerch@geisinger.edu

Lindsay Schwegman (GMEAS)
Indiana Univ.
ldschweg@iupui.edu

**Association of Pathology Chairs 2013 Annual Meeting
Participant List**

Adam Seegmiller (Other)
Vanderbilt University
adam.seegmiller@vanderbilt.edu

Mary Ann Sens (CHAIR)
University of North Dakota
mary.sens@med.und.edu

Beverly Shackelford (GMEAS)
Univ. of Texas Southwestern Med. Ctr.
beverly.shackelford@UTSouthwestern.edu

Kitt Shaffer (Other)
Boston University
kitt.shaffer@bmc.org

Arwa Shanaah (PRODS)
Ohio State University
arwa.shanaah@osumc.edu

Poonam Sharma (CHAIR)
Creighton University Medical Center
poonam.sharma@creighton.edu

Sandra Shearer (GMEAS)
Beaumont Health System
sshearer@beaumont.edu

Andrea Sheehan (Other)
Texas Children's Hospital
amsheeha@bcm.edu

David Shimizu (PRODS)
University of Hawaii
dshimizu@queens.org

Kenneth Shroyer (CHAIR)
Stony Brook Medicine
kenneth.shroyer@stonybrookmedicine.edu

Salah Shurbaji (PRODS)
East Tennessee State University
shurbaji@etsu.edu

Anwer Siddiqi (PRODS)
University of Florida Jacksonville
anwer.siddiqi@jax.ufl.edu

Brian Smith (CHAIR)
Yale University
june.fisher@yale.edu

Michelle Smith (GMEAS)
Virginia Commonwealth Univ.
msmith2@mcvh-vcu.edu

Kristi Smock (PRODS)
University of Utah
kristi.smock@aruplab.com

Bruce Smoller (Other)
US and Canadian Academy of Path
bruce@uscap.org

George Sneed (PRODS)
University of Tennessee
gsneed@utmck.edu

Mark Sobel (Other)
American Soc. for Investigative Pathology
mesobel@asip.org

Richard Sobonya (PRODS)
Univ. of Arizona Medical Center
sobonya@pathology.arizona.edu

Jennifer Stall (Residents)
University of Michigan
jstall@med.umich.edu

Jacob Steinberg (PRODS)
Montefiore Medical Center
jsteinbe@montefiore.org

David Strong (PDAS)
Univ. of Rochester Med Ctr.
david_strong@urmc.rochester.edu

Kelley Suskie (PDAS)
Univ. of Arkansas for Med Sciences
ksuskie@uams.edu

Kimiko Suzue (UMEDS)
Rosalind Franklin University
kimiko.suzue@rosalindfranklin.edu

Michael Talbert (CHAIR)
University of Oklahoma
michael-talbert@ouhsc.edu

Enrique Terrazas (PRODS)
Univ. of Calif. San Francisco Lab Med
enrique.terrazas@ucsf.edu

Monique Terrell (Other)
College of American Pathologists
mterrel@cap.org

Robert Tessier (Other)
HBP Financial Services
rtessier@hbpworld.com

Thomas Thamboo (PRODS)
National Univ. Hospital of Singapore
thomas_paulraj_thamboo@nuhs.edu.sg

Karl Theil (PRODS)
Cleveland Clinic
theilk@ccf.org

Patricia Thomas (Other)
The University of Kansas
PTHOMAS@kumc.edu

Ann Thor (CHAIR)
University of Colorado
ann.thor@ucdenver.edu

Linda Thorsen (Other)
ACGME Residency Review Comm.
lmt@acgme.org

Gregory Threatte (Senior Fellow)
SUNY Upstate Medical University
threatte@upstate.edu

Lowell Tilzer (CHAIR)
University of Kansas Medical Ctr.
ltilzer@kumc.edu

Charles Timmons (PRODS)
Univ. of Texas Southwestern Med. Ctr.
charles.timmons@childrens.com

John Tomaszewski (CHAIR)
University at Buffalo
johntoma@buffalo.edu

Douglas Toothman (PDAS)
West Virginia University
dtoothman@hsc.wvu.edu

Diana Treaba (PRODS)
Rhode Island Hospital
dtreaba@lifespan.org

Patrick Treseler (PRODS)
Univ. of California-San Francisco
patrick.treseler@ucsf.edu

J. Allan Tucker (CHAIR)
University of South Alabama
atucker@usouthal.edu

William Twaddell (PRODS)
University of Maryland
wtwaddell@umm.edu

Richard Vander Heide (CHAIR)
Louisiana State Univ. SOM
rvand3@lsuhsc.edu

Vijay Vanguri (UMEDS)
University of Massachusetts
vijay.vanguri@umassmed.edu

Carole Vogler (CHAIR)
St. Louis University
voglerca@slu.edu

**Association of Pathology Chairs 2013 Annual Meeting
Participant List**

William Wallace (UMEDS)
Univ. of California-LA Med Ctr.
wwallace@mednet.ucla.edu

Kai Wang (PDAS)
Univ. of California-San Francisco
kai.wang@ucsf.edu

Kathleen Warfield (GMEAS)
University of Maryland
kwarfiel@umaryland.edu

Mary Kay Washington (Other)
Vanderbilt University Med Ctr.
kay.washington@vanderbilt.edu

Debra Weber (GMEAS)
Washington University
weber@pathology.wustl.edu

Douglas Weeks (CHAIR)
Oregon Health & Science University
weeksd@ohsu.edu

Marcia Weis (PDAS)
Saint Louis University
mweis4@slu.edu

David Weissmann (UMEDS)
UMDNJ-Robert Wood Johnson MS
weissmdj@umdnj.edu

Wendy Wells (CHAIR)
Dartmouth - Hitchcock Medical
wendy.a.wells@hitchcock.org

Thomas Wheeler (CHAIR)
Baylor COM
twheeler@bcm.edu

David Wilkinson (CHAIR)
Virginia Commonwealth University
dwilkinson@mcvh-vcu.edu

H. James Williams (UMEDS)
West Virginia University
hjwilliams@hsc.wvu.edu

Marsha Williams (PDAS)
University of Utah
marsha.williams@path.utah.edu

William Winter (UMEDS)
University of Florida
winter@pathology.ufl.edu

Gayle Winters (PRODS)
Brigham & Womens Hospital
gwinters@partners.org

David Wooster (PDAS)
Yale University
David.Wooster@yale.edu

Roseann Wu (Residents)
Residents Mass. General Hospital
riwu@partners.org

Debra Wycoff (GMEAS)
Yale University
debra.wycoff@yale.edu

Wei Xin (PRODS)
Case Western Reserve University
wei.xin@case.edu

Nan Yamamura-Higa (PDAS)
University of Hawaii
nhiga@hawaii residency.org

Marwan Yared (PRODS)
University of Arkansas
myared@uams.edu

Josh Yelen (Other)
University of Miami
jyelen@med.miami.edu

Nadeem Zafar (PRODS)
Univ. of Tennessee HSC
nzafar@uthsc.edu

Dani Zander (CHAIR)
Penn State Hershey Medical Center
dzander@hmc.psu.edu

Xiaohui Zhao (PRODS)
University of California Irvine
zhaox@uci.edu

Carrie Zimerla (PDAS)
Case Western Reserve University
can12@case.edu

Matthew Zubiller (Other)
McKesson Health Solutions
matthew.zubiller@mckesson.com

Mary Zutter (Other)
Vanderbilt University
mary.zutter@vanderbilt.edu

NOTES:

Discover Medical Billing Management designed for Lab and Pathology



kellison & company

- improve your cash flow
- reduce your administrative costs
- enhance your profitability through efficient billing management

medical billing management



(216) 464-5160 • (888) 694-6300 • www.kellison.com



cap



Discover New Health Technology Solutions and Improve Your Practice

The new CAP/APC Health Information Technology (HIT) Basics course can help.

The CAP and the Association of Pathology Chairs (APC) partnered to bring you this timely online course. Enroll in Health Information Technology Basics today, and you will:

- Learn about the standards for electronic exchange in the health care environment.
- Understand how electronic medical records (EMR) are changing laboratory information systems (LIS).
- Understand the different telemicroscopy technology options and which best fit your practice.
- Adapt to emerging technologies and discover new solutions for your laboratory and hospital system challenges.
- Earn CME/SAM credit—available soon!

“Every perspective at this course is valuable and worth taking into account in our own strategies.”

– Attendee of original course given at APC/PRODS meeting

Codeveloped by



Secure your future with CAP Learning
cap.org/learning