

RANCHO BERNARDO INN • SAN DIEGO, CALIFORNIA



THE CHALLENGE TO INNOVATE:
PREPARING FOR CHANGE IN PATHOLOGY'S
WORKFORCE, TECHNOLOGY AND BUSINESS MODELS

JULY 14 - 17, 2015

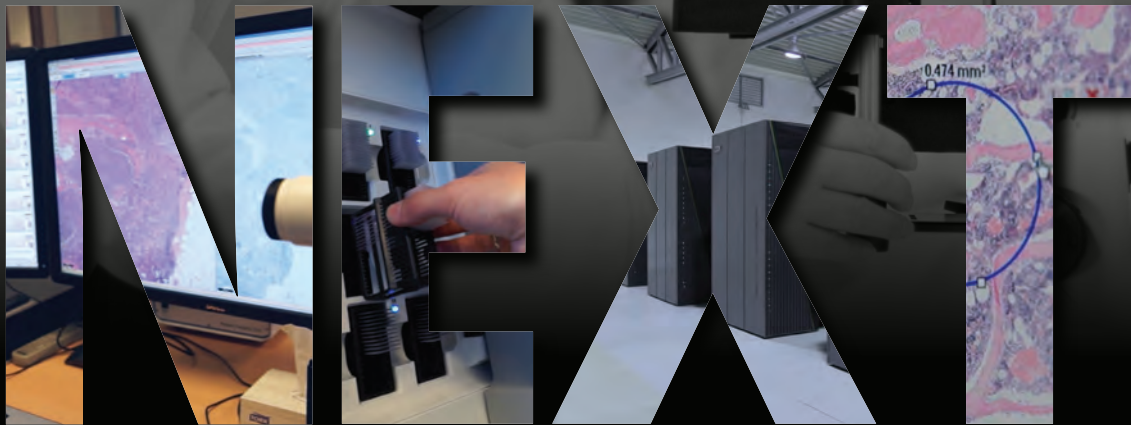
APC 2015 DIAMOND PARTNERS
www.apcprods.org/meetings/2015

ELSEVIER

inspirata
Transforming Cancer Diagnostics

PHILIPS

PATHOLOGY



PHILIPS

IntelliSite
pathology solutions

Inspirata and Philips are delivering on the promise and value afforded by digital pathology... not through incremental advances, but with transformative, intelligent solutions that leverage computer vision and big data to revolutionize how pathologists work and contribute to precision medicine. Our goal is to remove the challenges associated with digital pathology implementation by taking an evolutionary leap in how pathology is practiced.

Learn what "Pathology NEXT" is all about at
Booth #7 in front of the Aragon Ballroom.
www.inspirata.com

inspirata[™]
Transforming Cancer Diagnostics



RISE PLUS

The best-valued option to help your residents succeed.

For one low price, your program will receive:



RISE

- Evaluate residents' strengths and areas for improvement
- Created by a faculty of renowned experts in their fields

Plus



PRISE

- Unlimited access to 600+ case-based study questions online
- Questions include images, educational feedback and references

Plus



LAB MANAGEMENT UNIVERSITY

- 25 web-based multimedia courses in laboratory management
- Courses correspond with many of the ACGME Milestones in Lab Management

Renew
or Order
now for

2016!

ascp.org/riseplus

To order, call 1.800.267.2727, or email jay.wagner@ascp.org



COLLEGE of AMERICAN
PATHOLOGISTS



Help your residents develop best test utilization practices

Test Utilization for Residents

Developed in collaboration with APC/PRODS, this **complimentary** course is designed specifically for residents and emphasizes the importance and principles of appropriate test utilization practices.

Residents will review multiple clinical scenarios and use medical knowledge and interpersonal skills to offer advice on test utilization for the health care team. In addition, this course will help residents achieve the following residency training milestones:

- Laboratory Management (System-based Practice)
- Interpretation, Diagnosis, and Reporting (Patient Care)
- Consultation (Patient Care)
- Teaching (Medical Knowledge)
- Intra- and Interdepartmental Interactions (Interpersonal and Communication Skills)

Participate in this course online from any device. Residents need to establish a user ID on the CAP website if they do not already have one. CAP membership is not required.

**Don't let your
residents miss out
on this unique and
complimentary
learning opportunity!**

**Learn more at
learn.cap.org**

corista

Getting Digital Pathology Right. Faster.



Only with Corista can you read images from every whole slide scanner, and seamlessly integrate with any LIS.

Corista ... collaborative, intuitive, secure.

Corista is Frost & Sullivan's 2014 Product Innovation Award Winner.

Read their report at www.corista.com/fs-report.





**DRIVEN TO TRANSFORM ONCOLOGY CARE
THROUGH BOLD SCIENTIFIC DISCOVERIES**

By combining innovation and dedication, Genentech BioOncology is advancing the way cancer is understood, diagnosed, and treated.

Visit BioOncology.com for the latest in anticancer research and clinical development.

Genentech
A Member of the Roche Group

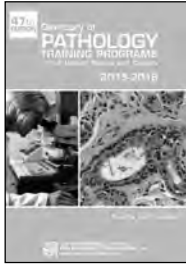
BIOONCOLOGY®



INTERSOCIETY COUNCIL FOR PATHOLOGY INFORMATION (ICPI)



The Intersociety Council for Pathology Information (ICPI) is a nonprofit educational organization sponsored by five national pathology societies to serve as a central source of information about pathology in the practice of medicine, in medical research, and to provide literature about pathology as a career.



▶ **Visit the Pathology Training Programs Online Directory**
(Print-On-Demand Also Available)

www.pathologytraining.org

- Residency Training Programs
- Fellowships
- Post-Sophomore Fellowships

Searchable by: Institution, Region/State, Specialization



Medical Student Interest Groups

Because Medical Student Interest Groups are a great mechanism to encourage outstanding medical students to consider a career in pathology, ICPI's support can be used to enhance an existing program or develop a new one! ICPI will fund (up to \$750) a limited number of programs each year. The goal is to develop a "best practices" for medical student interest groups.



ICPI Trainee Travel Award Program

ICPI supports trainee participation in scientific meetings organized by its participating societies. A limited number of ICPI Trainee Travel Awards are available.

There are two types of Travel Awards:

- **Travel Award:** \$500.00 for trainees who do not submit an abstract
- **Travel Award with Abstract:** \$750.00 for trainees who submit an abstract to the meeting they are attending

The stipend is intended to offset the travel costs for attending one of ICPI's member societies' meetings. Awardees must currently be a trainee (medical student, graduate student, resident, fellow) member of one of the participating societies of ICPI.



Pathology Student Honor Society

Co-Sponsored with APC

Recognize outstanding medical students in the discipline of Pathology at your institution! To find out how to participate, visit: www.pathologytraining.org/PSHS



Career Development Resources

Resources covering a variety of career paths are available on the ICPI website at

www.pathologytraining.org/trainees/



Pathology Roundtable

Discussions of issues of concern to the discipline of pathology.

Participating Societies of ICPI

CHARTER MEMBERS

- American Society for Clinical Pathology
- American Society for Investigative Pathology
- Association of Pathology Chairs
- College of American Pathologists
- United States and Canadian Academy of Pathology

ASSOCIATE MEMBERS

- Academy of Clinical Laboratory Physicians and Scientists
- American Association of Neuropathologists
- American Board of Oral and Maxillofacial Pathology
- American Board of Pathology
- American College of Veterinary Pathologists
- American Osteopathic College of Pathologists
- American Society of Cytopathology
- Arthur Purdy Stout Society of Surgical Pathologists
- Association for Molecular Pathology
- Canadian Association of Pathologists
- National Association of Medical Examiners
- Papanicolaou Society of Cytopathology
- Society for Pediatric Pathology

**COME SEE WHAT
ICPI HAS TO OFFER!**
www.pathologytraining.org

visiopharm®

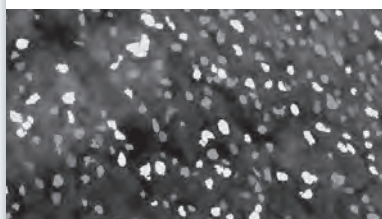


Turning Images into Knowledge

Disease progression and drug treatment effects are often reflected in micro-structural tissue properties and through the expression of biomarkers.

Visiopharm quantitative digital pathology solutions provide pathologists and scientists with a flexible, powerful suite of software to quantify relevant tissue properties in a fast, objective and reproducible way.

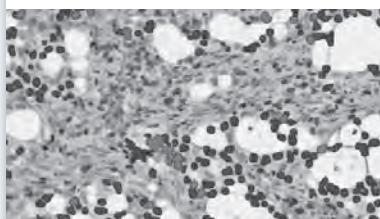
BIOTOPIX™



Basic Research
Drug Discovery and Development

Research as a business is risky- get accurate quantitative data to make the right decision. Less risk, better results.

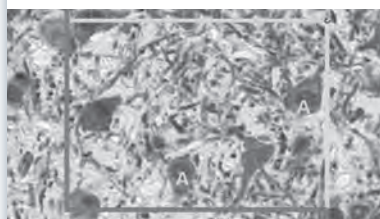
ONCOTOPIX™



Cancer Diagnostics
Drug Discovery and Development

Unlock the potential of digital pathology for cancer diagnostics and research - increase productivity, and deliver verifiable, high quality results.

STEREOTOPIX™



Basic Research
Drug Discovery and Development

Quantify changes in tissue in an unbiased, statistically robust way with newCAST™ a comprehensive Stereology solution documented in over 800 publications.

www.visiopharm.com

Visiopharm North America · P.O. Box 486 · Broomfield, CO 80038 · (877) 843-5268

Tab 1 - MAPS - EXHIBITS

UNIVERSITY OF WASHINGTON
Laboratory Medicine

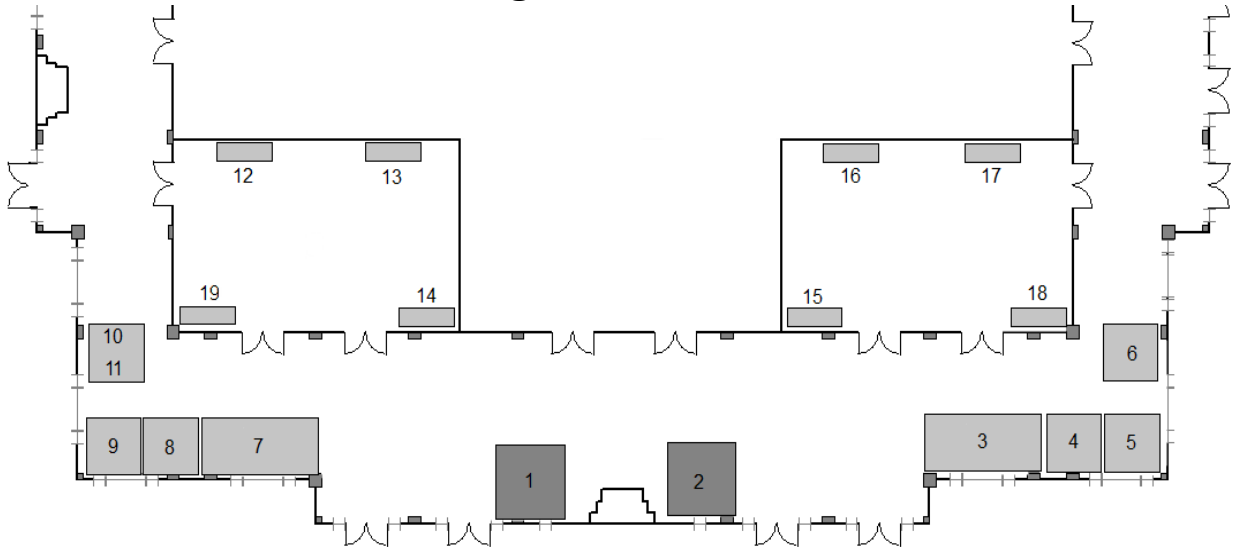


Genetic testing
Molecular Microbiology
Mass Spectrometry

depts.washington.edu/labweb

**Association of Pathology Chairs
2015 Annual Meeting & Exhibits**
Rancho Bernardo Inn, San Diego, California
Rancho Bernardo Inn – Exhibit Hall

Aragon Ballroom



Diamond Partners

Elsevier - #3
Inspirata, Inc. & Philips - #7

Platinum Partner

American Society for Clinical Pathology - #1

Gold Partners

College of American Pathologists - #2

Corista - #4

Genentech Inc. - #5

Intersociety Council for Pathology

Information - #10

Sakura Finetek USA, Inc. - #6

University of Washington - #8

Visiopharm - #9

Exhibitors

American Pathology Foundation - #14

American Society for Investigative
Pathology - #11

GRM Document Management - #17

Kellison & Co. - #19

McKesson Business Performance
Services - #13

Medusind Solutions, Inc. - #16

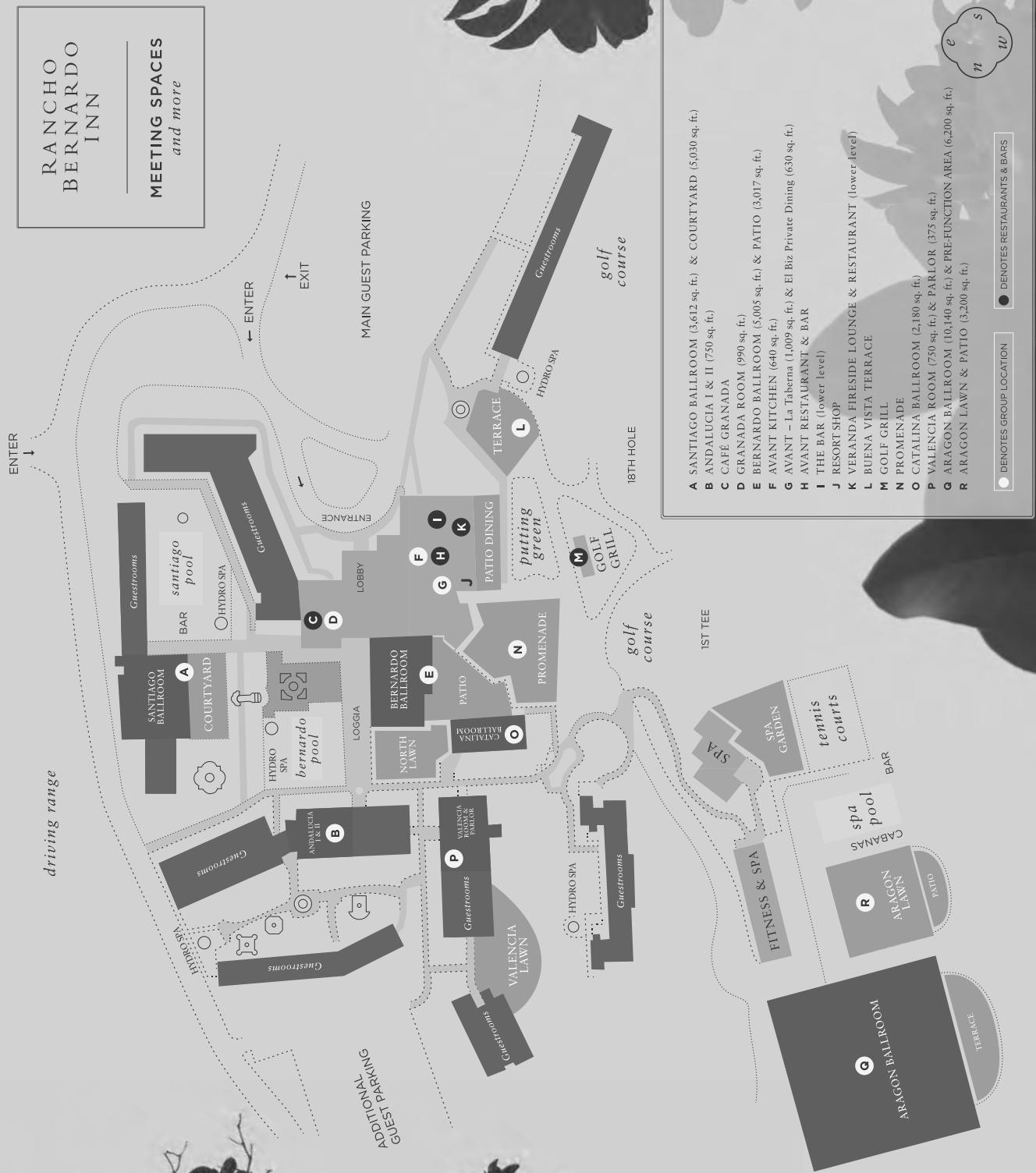
QGenda - #15

Vachette Pathology - #18

Views IQ - #12

RANCHO BERNARDO INN

MEETING SPACES
and more



- A** SANTIAGO BALLROOM (3,612 sq. ft.) & COURTYARD (5,030 sq. ft.)
- B** ANDALUCIA I & II (750 sq. ft.)
- C** CAFÉ GRANADA
- D** GRANADA ROOM (990 sq. ft.)
- E** BERNARDO BALLROOM (5,005 sq. ft.) & PATIO (3,017 sq. ft.)
- F** AVANT KITCHEN (640 sq. ft.)
- G** AVANT – La Taberna (1,009 sq. ft.) & El Biz Private Dining (630 sq. ft.)
- H** AVANT RESTAURANT & BAR
- I** THE BAR (lower level)
- J** RESORT SHOP
- K** VERANDA FIRESIDE LOUNGE & RESTAURANT (lower level)
- L** BUENA VISTA TERRACE
- M** GOLF GRILL
- N** PROMENADE
- O** CATALINA BALLROOM (2,180 sq. ft.)
- P** VALENCIA ROOM (750 sq. ft.) & PARLOR (375 sq. ft.)
- Q** ARAGON BALLROOM (10,140 sq. ft.) & PRE-FUNCTION AREA (6,200 sq. ft.)
- R** ARAGON LAWN & PATIO (3,200 sq. ft.)

● DENOTES RESTAURANTS & BARS
○ DENOTES GROUP LOCATION



Association of Pathology Chairs 2015 Annual Meeting
July 14-17, 2015
Rancho Bernardo Inn, San Diego, California

**Exhibit Schedule
(Aragon Ballroom and Foyer)**

Tuesday, July 14, 2015

3:00pm – 7:00pm

Wednesday, July 15, 2015

7:00am – 6:00pm

Thursday, July 16, 2015

7:00am – 1:00pm

DIAMOND Partner Descriptions

Elsevier (Booth #3)

Elsevier is a world-leading provider of information solutions that enhance the performance of science, health, and technology professionals, empowering them to make better decisions, and deliver better care.

<http://www.elsevier.com/>

Inspirata, Inc. (Booth #7)

Inspirata provides an end-to-end digital pathology workflow solution that digitizes and automates the entire case review process using a unique, "solution-as-a-service" delivery model. This comprehensive solution includes workflow automation and high-throughput slide scanning as well as hi-res image viewing, computer-aided screening, collaboration tools, integrated data feeds from disparate clinical systems and reporting-all available in a single sign-on cockpit. www.inspirata.com

Philips (Booth #7)

At Philips, we deliver innovative, healthcare technology solutions designed to create value by improving the quality and delivery of care while lowering cost. Leveraging decades of Philips' experience in clinical digital transformation, the IntelliSite pathology solution is designed to empower pathologists with a solution that supports optimization of productivity and workflow, and ultimately help to improve patient outcome.

<http://www.usa.philips.com/>

PLATINUM Partner Description

American Society for Clinical Pathology (Booth #1)

The American Society for Clinical Pathology (ASCP) is the world's largest professional membership organization for pathologists and laboratory professionals. Our mission is to provide excellence in education, certification and advocacy on behalf of patients, pathologists and laboratory professionals across the globe. With more than 100,000 members, the society's influence has guided the application and evolution of the pathology and laboratory medicine specialty since 1922. <http://www.ascp.org/>

GOLD Partner Descriptions

College of American Pathologists (Booth #2)

As the leading organization for board-certified pathologists, the College of American Pathologists (CAP) serves patients, pathologists, and the public by fostering and advocating excellence in the practice of pathology and laboratory medicine worldwide. With more than 18,000 physician members, the CAP has led laboratory accreditation for more than 50 years with more than 7,500 CAP-accredited laboratories in 50 countries. For more information visit: www.cap.org

Corista (Booth #4)

Corista's DP3 is unlocking the scale, reach and utility of digital pathology, worldwide. The only digital pathology software natively reading every scanner's image format, DP3 integrates universal image access, complete workflow, collaboration, and search and analysis functionality. DP3 integrates with any LIS, and is accessible from any web-enabled device. DP3 was awarded Frost & Sullivan's Product Innovation Award in 2014. For more information visit: www.corista.com

Genentech (Booth #5)

Founded more than 35 years ago, Genentech is a leading biotechnology company that discovers, develops, manufactures and commercializes medicines to treat patients with serious or life-threatening medical conditions. The company, a member of the Roche Group, has headquarters in South San Francisco, California. For more information visit: <http://www.gene.com/>

Intersociety Council for Pathology Information (Booth #10)

The Intersociety Council for Pathology Information (ICPI) is a nonprofit educational organization that serves as a central source of information about careers in pathology. ICPI publishes the *Directory of Pathology Training Programs*, supports Pathology Medical Student Interest Groups, trainee travel awards, and the Pathology Student Honor Society, which recognizes outstanding medical students in the discipline of pathology. For more information visit: <http://www.pathologytraining.org>

Sakura Finetek, USA, Inc. (Booth #6)

We cordially invite you to visit our booth to experience the unbeatable combination of innovation and tradition. We present to you the VisionTek® M6 Digital Microscope, designed for cytopathologists and hematopathologists with 2.5x, 5x, 10x, 20x, 40x, 63x, adjustable Köhler illumination, fast scan speed of 1.5 min for 15 mm x 15 mm at 0.275 µm/pixels and time to view under 17 seconds for rapid remote live consultations. For more information visit: www.sakura.com

The University of Washington Laboratory Medicine (Booth #8)

The University of Washington Laboratory Medicine is serving our mission as a regional and national resource for exceptional, advanced clinical testing. Our specialties include molecular microbiology (paraffin embedded tissues), molecular virology (HIV 2), and Next Gen Sequencing (BROCA, Coloseq, Oncoplex). Clinical trial services available. For more information visit: <http://depts.washington.edu/labweb/referencelab/>

Visiopharm (Booth #9)

Over the past 14 years, Visiopharm image analysis and stereology software has become the preferred Quantitative Digital Pathology solution for academic researchers all over the world. Recently, Visiopharm has expanded to include ONCOTOPix™ Dx for cancer diagnostics with CE-IVD breast algorithms, an LIS driven workflow, and Virtual Double Staining. Our software is featured in over 800 scientific publications and is compatible with leading whole slide scanners. For more information visit: <http://www.visiopharm.com/>

Exhibitor Descriptions

American Pathology Foundation (Booth #14)

The American Pathology Foundation (APF) is a professional society devoted to the business of pathology. Founded in 1959, the Foundation focuses on providing quality educational programs and management resources for members to help them stay current with scientific, regulatory, and marketplace developments affecting the practice of pathology. APF membership is inclusive of pathologists, practice managers, pathology residents and academic programs. For more information visit: <https://www.apfconnect.org/>

American Society for Investigative Pathology (Booth #11)

The American Society for Investigative Pathology (ASIP) promotes the discovery, advancement, and dissemination of knowledge in experimental pathology and related disciplines. We achieve this by fostering investigation into the pathogenesis, classification, diagnosis, and manifestations of disease through meetings, publications, and educational activities. The Society is the owner of *The American Journal of Pathology (AJP)*. *AJP* is the leading global forum for reporting research on cellular and molecular mechanisms of disease publishing high-quality, original papers on the cellular and molecular biology of disease. For more information visit: www.asip.org

GRM Document Management (Booth #17)

Trusted for over 28 years, GRM Document Management has been a leading provider of information management solutions. We continue to demonstrate technological leadership by bringing proprietary innovation to document storage solutions, digital records management, data protection services, document shredding services and healthcare release of information. For more information visit: <http://www.grmdocumentmanagement.com>

Kellison & Co. (Booth #19)

Since 1976, the principals of Kellison & Company have specialized in providing comprehensive revenue cycle management services to Pathology practices including outreach, hospital-based AP practices, molecular labs and clinical professional component practices. Kellison's goal is to help improve cash flow, reduce administrative costs and enhance patient satisfaction. The company provides credentialing services, turning around denials and reporting options to help you monitor your current financial status, as well as to predict future trends. For more information visit: www.kellison.com

McKesson Business Performance Services (Booth #13)

McKesson Business Performance Services is an experienced provider of healthcare management, medical billing and technology services for hospitals, health systems, physicians and other valued healthcare stakeholders nationwide. We offer a comprehensive portfolio of revenue cycle solutions, practice management services, and advanced technology to help our clients achieve better business health. For more information visit: www.mckesson.com/bps

Medusind Solutions (Booth #16)

Medusind Solutions® has provided high-end service offerings to pathologists, hospitals and health systems since 1975. With a staff of medical doctors and CPC/CPC-H certified coders, we bring 38 years of relevant pathology billing experience, technology and time proven processes to the management of your billing, ICD-9/10 coding and compliance needs. For more information visit: <http://www.medusind.com/>

Association of Pathology Chairs 2015 Annual Meeting

July 14-17, 2015

Rancho Bernardo Inn, San Diego, California

QGenda (Booth #15)

QGenda is the industry leader in automated physician scheduling. QGenda provides Software-as-a-Service that automatically generates optimized physician work schedules to accommodate complex business rules via QGenda's high powered algorithm. In addition, QGenda accurately schedules the appropriate medical provider based on his or her skill level, specialty, availability, and preferences. Please stop by the QGenda booth to learn more about us. <http://www.qgenda.com/>

Vachette (Booth #18)

Are you 100% confident in your CBO or practice billing? When was the last time you auditing this process? Who is building your projections for new bundled payment models? Perhaps Vachette Pathology can help. We specialize in assisting university and private practices and health systems in revenue cycle consultation. Who is watching your wallet? Mick Raich 517-403-0763. For more information visit:

<http://www.vachettepathology.com/>

ViewsIQ (Booth #12)

ViewsIQ is an imaging software company that develops microscopy imaging solutions for academic institutions, hospitals, and research laboratories. Designed to integrate seamlessly into the laboratory's existing microscopy workflow, ViewsIQ's Panoptiq™ digital imaging platform allows users to stitch together panoramic images and visualize 3D structures in real time at up to 100x to capture the full complexity of a microscope sample. For more information visit: www.viewsiq.com/

Tab 2 - CME INFORMATION

Continuing Medical Education (CME) Information



STRONGERTOGETHER



Association of Pathology Chairs

CME Accreditation Statement: This activity (“APC 2015 Annual Meeting”) has been planned and implemented in accordance with the Essential Areas and policies of the Accreditation Council for Continuing Medical Education (ACCME) through the joint providership of the American Society for Clinical Pathology (ASCP) and the Association of Pathology Chairs (APC). ASCP is accredited by the ACCME to provide continuing medical education for physicians.

The ASCP designates this “live” educational activity (“APC 2015 Annual Meeting”) for a maximum of 22.5 *AMA PRA Category 1 Credit(s)*[™]. Physicians should only claim credit commensurate with the extent of their participation in the activity.

CME applications are available online (www.apcprods.org/Meetings/2015/CME) beginning **July 1, 2015**. Should you have questions, please contact the APC Office (301-634-7880; email info@apcprods.org).

Meeting Objective/Target Audience: The APC Annual Meeting is a three-day meeting that provides educational activities for three major target audiences: (1) Chairs of Pathology and Laboratory Medicine Departments; (2) Program Directors and Associate Directors of Residency Training Programs; and (3) Course Directors of pathology courses in LCME-accredited medical schools in North America. The objective of the meeting is to facilitate knowledge acquisition regarding the ability of academic Pathology and Laboratory Medicine departments to carry out their missions in teaching, clinical service, and research. The meeting therefore focuses on undergraduate (medical school), graduate (residency and fellowship) Pathology education, and the practice of Pathology and Laboratory medicine in academic medical centers and hospitals. Content focuses on issues such as the development of educational programs and curricula for the training of medical students, residents, fellows, and senior pathologists on providing cost-effective, high-quality clinical service to patients. The meeting also features content related to research and implementation of cutting edge practice tools, such as diagnostics, genomic medicine, and bioinformatics; and their implications on future healthcare delivery, as well as workforce development and realignment to support current and new skill sets required to practice Pathology and Laboratory Medicine now and into the future.

The target audience is professionals (MD, DO, PhD) and others who serve as the academic, medical, scientific, and administrative leaders of departments of pathology and laboratory medicine in the United States and Canada.

Disclosure of Financial Relationships and Resolution of Conflicts of Interest: In order to ensure balance, independence, objectivity and scientific rigor in all of its educational activities, and in accordance with ACCME Standards, the ASCP requires all individuals in a position to influence and/or control the content of ASCP CME activities to disclose to the ASCP and subsequently to learners whether they do or do not have any relevant financial relationships with proprietary entities producing health care goods or services that are discussed in CME activities. Faculty are asked to use generic names in any discussion of therapeutic options, to base patient care recommendations on scientific evidence and to base information regarding commercial products/services on scientific methods generally accepted by the medical community. All ASCP CME activities are evaluated by participants for the presence of any commercial bias and this input is used for subsequent CME planning decisions. The primary purpose of this activity is educational and the comments, opinions and/or recommendations expressed by the faculty or authors are their own and not those of ASCP.

None of the organizers or presenters of this educational activity disclosed a relevant financial relationship.

PLEASE NOTE:

Please refer to the APC Meeting Evaluation and CME Application Workbook for a consolidated list of sessions that are eligible for *AMA PRA Category 1 Credit(s)*[™]. APC, PRODS and UMEDS sessions are eligible for *AMA PRA Category 1 Credit(s)*[™] except where noted in the meeting program. PDAS and GMEAS sessions are not eligible for *AMA PRA Category 1 Credit(s)*[™]. Visiting exhibits is not an approved continuing medical education activity. Most meals are not approved for continuing medical education credit; however, some special breakfasts and lunches that have educational content are eligible for Continuing Medical Education credit as noted in your APC Meeting Evaluation and CME Application Workbook. The meeting program states those events that are not a Continuing Medical Education activity.



"Promoting Excellence in Academic Pathology"

The Association of Pathology Chairs serves as the voice of academic pathology. The mission of the APC is to provide leadership and to advocate for the dynamic discipline of pathology. The APC provides education, training, information resources and networking opportunities for chairs, residency program directors, undergraduate medical educators, department administrators, and graduate program coordinators. For more information, visit www.apcprods.org.

CME Organizing Committee for the 2015 Annual Meeting

PRESIDENT-ELECT

Tristram Parslow, MD, PhD
Emory University

PRESIDENT

Donald Karcher, MD
The George Washington University

PAST PRESIDENT

Ann Thor, MD
University of Colorado at Denver

SECRETARY-TREASURER

Peter Jensen, MD
University of Utah

COUNCILOR-AT-LARGE

Dani Zander, MD
Penn State University

CHAIR, Undergraduate Medical Education Committee

Michael Prystowsky, MD, PhD
Albert Einstein College of Medicine

CHAIR, Graduate Medical Education Committee

Peter Kragel, MD
East Carolina University

CHAIR, Research Committee

Daniel Remick, MD
Boston University

CHAIR, Practice & Management Committee

Barbara Ducatman, MD
West Virginia University

CHAIR, Advocacy Committee

John Tomaszewski, MD
University at Buffalo, SUNY

CHAIR, PRODS Section (Residency Program Directors)

Charles Timmons, MD, PhD
University of Texas Southwestern Medical School

CHAIR, UMEDS Section (Undergraduate Medical Educators)

H. James Williams, MD
Mount Sinai School of Medicine

CHAIR, PDAS Section (Pathology Department Administrators)

Kelley Suskie, MHSA, FACMPE
University of Arkansas for Medical Sciences

CME Administrator for the APC 2015 Annual Meeting

Priscilla Markwood, CAE
Executive Director, Association of Pathology Chairs

Rancho Bernardo Inn, San Diego, California – July 14-17, 2015

The following pages are provided only as a workbook. To submit your evaluation form for Continuing Medical Education credit, please visit www.apcprods.org/Meetings/2015/CME, and submit your completed form **no later than September 15, 2015**. If you have not already registered for CME, please ask the registration desk at the meeting for an application form, or email info@apcprods.org.

First Name: _____ M.I. ____ Last Name: _____
 Degree(s) (check all that apply) MD DO DVM PhD Other Degrees: _____
 Institution: _____
 Department: _____
 Address: _____
 City: _____ State: _____ Zipcode: _____
 United States: Canada: Other Country: _____
 Telephone: _____ Email: _____

Tuesday, July 14, 2015

Pre-Meeting Workshop: Leadership Development Workshop *Chairs/PDAS Session* 1:00 pm – 4:30 pm

(CME Hours: 3.5)

SPEAKERS: A. Thor, P. Kragel, R. Challender, B. Ducatman

Educational Objectives: <input type="checkbox"/> Exceeded Expectations <input type="checkbox"/> Fully Met <input type="checkbox"/> Partially Met <input type="checkbox"/> Poorly Met <input type="checkbox"/> Did not attend	Comments:
--	------------------

- OR -

Pre-Meeting Workshop: Joint Boot Camp *PRODS/GMEAS Session* 1:00 pm – 3:00 pm

(CME Hours: 2.0)

SPEAKERS: C. Timmons, R. Johnson, L. Edgar

Educational Objectives: <input type="checkbox"/> Exceeded Expectations <input type="checkbox"/> Fully Met <input type="checkbox"/> Partially Met <input type="checkbox"/> Poorly Met <input type="checkbox"/> Did not attend	Comments:
--	------------------

- OR -

Pre-Meeting Workshop: Course Director Workshop *UMEDS Session* 1:00 pm – 5:00 pm

(CME Hours: 4.0)

SPEAKERS: R. Heffner, P. Anderson, B. Knollman-Ritschel, M. Flanagan

Educational Objectives: <input type="checkbox"/> Exceeded Expectations <input type="checkbox"/> Fully Met <input type="checkbox"/> Partially Met <input type="checkbox"/> Poorly Met <input type="checkbox"/> Did not attend	Comments:
--	------------------

Pre-Meeting Workshop: New Program Director’s Boot Camp *PRODS Session 3:30 pm – 4:30 pm*

(CME Hours: 1.0)

SPEAKERS: M. Kapp, H. Sullivan, L. Ritterhouse, L. Stuart

<p>Educational Objectives:</p> <ul style="list-style-type: none"> <input type="checkbox"/> Exceeded Expectations <input type="checkbox"/> Fully Met <input type="checkbox"/> Partially Met <input type="checkbox"/> Poorly Met <input type="checkbox"/> Did not attend 	<p>Comments:</p>
--	-------------------------

Wednesday, July 15, 2015

Advocacy Session: Innovation in Pathology Education & Workforce Training

Chairs/PRODS/UMEDS/PDAS Session 8:00 – 10:30 am

(CME Hours: 2.5)

SPEAKERS: J. Tomaszewski, D. Powell, T. Nasca, R. Johnson, W. Black-Schaffer, G. Davis, W. Finn, P. Kragel

<p>Educational Objectives:</p> <ul style="list-style-type: none"> <input type="checkbox"/> Exceeded Expectations <input type="checkbox"/> Fully Met <input type="checkbox"/> Partially Met <input type="checkbox"/> Poorly Met <input type="checkbox"/> Did not attend 	<p>Comments:</p>
--	-------------------------

CONCURRENT DISCUSSION GROUPS

Chairs/PRODS/PDAS/UMEDS Session

Discussion Group #1 11:00 am to 12:30 pm

(CME Hours: 1.5)

MODERATORS: S. Anderson, W. Henricks, T. Macpherson

<p>Educational Objectives:</p> <ul style="list-style-type: none"> <input type="checkbox"/> Exceeded Expectations <input type="checkbox"/> Fully Met <input type="checkbox"/> Partially Met <input type="checkbox"/> Poorly Met <input type="checkbox"/> Did not attend 	<p>Comments:</p>
--	-------------------------

- OR -

Discussion Group #2 11:00 am to 12:30 pm

(CME Hours: 1.5)

MODERATORS: B. Dangott, P. Taylor-Smith, J. Yelen

<p>Educational Objectives:</p> <ul style="list-style-type: none"> <input type="checkbox"/> Exceeded Expectations <input type="checkbox"/> Fully Met <input type="checkbox"/> Partially Met <input type="checkbox"/> Poorly Met <input type="checkbox"/> Did not attend 	<p>Comments:</p>
--	-------------------------

- OR -

Discussion Group #3 11:00 am to 12:30 pm

(CME Hours: 1.5)

MODERATORS: R. Gandour-Edwards, L. Howell, M. Magid

<p>Educational Objectives:</p> <ul style="list-style-type: none"> <input type="checkbox"/> Exceeded Expectations <input type="checkbox"/> Fully Met <input type="checkbox"/> Partially Met <input type="checkbox"/> Poorly Met <input type="checkbox"/> Did not attend 	<p>Comments:</p>
--	-------------------------

- OR -

Discussion Group #4 11:00 am to 12:30 pm

(CME Hours: 1.5)

MODERATORS: M. Furlong, R. McGoey, W. Naritoku

<p>Educational Objectives:</p> <ul style="list-style-type: none"> <input type="checkbox"/> Exceeded Expectations <input type="checkbox"/> Fully Met <input type="checkbox"/> Partially Met <input type="checkbox"/> Poorly Met <input type="checkbox"/> Did not attend 	<p>Comments:</p>
--	-------------------------

- OR -

Discussion Group #5 11:00 am to 12:30 pm

(CME Hours: 1.5)

MODERATORS: K. Frank, P. Kragel

<p>Educational Objectives:</p> <ul style="list-style-type: none"> <input type="checkbox"/> Exceeded Expectations <input type="checkbox"/> Fully Met <input type="checkbox"/> Partially Met <input type="checkbox"/> Poorly Met <input type="checkbox"/> Did not attend 	<p>Comments:</p>
--	-------------------------

- OR -

Discussion Group #6 11:00 am to 12:30 pm

(CME Hours: 1.5)

MODERATORS: B. Smith, D. Zander

<p>Educational Objectives:</p> <ul style="list-style-type: none"> <input type="checkbox"/> Exceeded Expectations <input type="checkbox"/> Fully Met <input type="checkbox"/> Partially Met <input type="checkbox"/> Poorly Met <input type="checkbox"/> Did not attend 	<p>Comments:</p>
--	-------------------------

- OR -

Discussion Group #7 11:00 am to 12:30 pm

(CME Hours: 1.5)

MODERATORS: W. Oliver, J. Steinberg

<p>Educational Objectives:</p> <ul style="list-style-type: none"> <input type="checkbox"/> Exceeded Expectations <input type="checkbox"/> Fully Met <input type="checkbox"/> Partially Met <input type="checkbox"/> Poorly Met <input type="checkbox"/> Did not attend 	<p>Comments:</p>
--	-------------------------

- OR -

Discussion Group #8 11:00 am to 12:30 pm

(CME Hours: 1.5)

MODERATORS: T. Hebert, M. Prystowsky, N. Zafar

<p>Educational Objectives:</p> <ul style="list-style-type: none"> <input type="checkbox"/> Exceeded Expectations <input type="checkbox"/> Fully Met <input type="checkbox"/> Partially Met <input type="checkbox"/> Poorly Met <input type="checkbox"/> Did not attend 	<p>Comments:</p>
--	-------------------------

- OR -

Discussion Group #9 11:00 am to 12:30 pm

(CME Hours: 1.5)

MODERATORS: B. Ducatman, R. Low

<p>Educational Objectives:</p> <ul style="list-style-type: none"> <input type="checkbox"/> Exceeded Expectations <input type="checkbox"/> Fully Met <input type="checkbox"/> Partially Met <input type="checkbox"/> Poorly Met <input type="checkbox"/> Did not attend 	<p>Comments:</p>
--	-------------------------

- OR -

Discussion Group #10 11:00 am to 12:30 pm

(CME Hours: 1.5)

MODERATORS: H. Pukay-Martin, A. Thor

<p>Educational Objectives:</p> <ul style="list-style-type: none"> <input type="checkbox"/> Exceeded Expectations <input type="checkbox"/> Fully Met <input type="checkbox"/> Partially Met <input type="checkbox"/> Poorly Met <input type="checkbox"/> Did not attend 	<p>Comments:</p>
--	-------------------------

- OR -

Discussion Group #11 11:00 am to 12:30 pm

(CME Hours: 1.5)

MODERATORS: D. Remick, F. Sanfilippo

<p>Educational Objectives:</p> <ul style="list-style-type: none"> <input type="checkbox"/> Exceeded Expectations <input type="checkbox"/> Fully Met <input type="checkbox"/> Partially Met <input type="checkbox"/> Poorly Met <input type="checkbox"/> Did not attend 	<p>Comments:</p>
--	-------------------------

- OR -

Discussion Group #12 11:00 am to 12:30 pm

(CME Hours: 1.5)

MODERATORS: J. Baci, J. Crawford, M. Lawlor

<p>Educational Objectives:</p> <ul style="list-style-type: none"> <input type="checkbox"/> Exceeded Expectations <input type="checkbox"/> Fully Met <input type="checkbox"/> Partially Met <input type="checkbox"/> Poorly Met <input type="checkbox"/> Did not attend 	<p>Comments:</p>
--	-------------------------

Practice & Management Session *Chairs/PDAS Session 2:00 pm – 4:30 pm*

(CME Hours: 2.5)

SPEAKERS: D. Leonard, J. Hunt, T. Wheeler, R. Cote, P. Taylor-Smith, M. Lawlor, J. Pine Wood

<p>Educational Objectives:</p> <ul style="list-style-type: none"> <input type="checkbox"/> Exceeded Expectations <input type="checkbox"/> Fully Met <input type="checkbox"/> Partially Met <input type="checkbox"/> Poorly Met <input type="checkbox"/> Did not attend 	<p>Comments:</p>
--	-------------------------

- OR -

Case Studies in Professionalism *PRODS/UMEDS Session 2:00 pm – 4:30 pm*

(CME Hours: 2.5)

MODERATOR: R. Domen; PANELISTS: R. Conran, R. Hoffman, M. Post, S. Powell, J. Steinberg

<p>Educational Objectives:</p> <ul style="list-style-type: none"> <input type="checkbox"/> Exceeded Expectations <input type="checkbox"/> Fully Met <input type="checkbox"/> Partially Met <input type="checkbox"/> Poorly Met <input type="checkbox"/> Did not attend 	<p>Comments:</p>
--	-------------------------

UMEDS Posters on Display *Chairs/PRODS/UMEDS 8:00 am – 6:00 pm*

(CME Hours: 0.5)

AUTHORS: Miscellaneous (see program)

<p>Educational Objectives:</p> <ul style="list-style-type: none"> <input type="checkbox"/> Exceeded Expectations <input type="checkbox"/> Fully Met <input type="checkbox"/> Partially Met <input type="checkbox"/> Poorly Met <input type="checkbox"/> Did not attend 	<p>Comments:</p>
--	-------------------------

Thursday, July 16, 2015

Practical Applications of Computational Pathology *Chairs/PRODS/UMEDS Session 8:00 am – 10:00 am*

(CME Hours: 2.0)

SPEAKERS: K. Kaul, A. Carter, A. Robicsek, U. Balis, D. Karcher

<p>Educational Objectives:</p> <ul style="list-style-type: none"> <input type="checkbox"/> Exceeded Expectations <input type="checkbox"/> Fully Met <input type="checkbox"/> Partially Met <input type="checkbox"/> Poorly Met <input type="checkbox"/> Did not attend 	<p>Comments:</p>
--	-------------------------

Research Session Chairs Session 10:30 am – 12:00 pm

(CME Hours: 1.5)

MODERATOR: D. Remick, J. Merchant, S. Rockey

<p>Educational Objectives:</p> <ul style="list-style-type: none"> <input type="checkbox"/> Exceeded Expectations <input type="checkbox"/> Fully Met <input type="checkbox"/> Partially Met <input type="checkbox"/> Poorly Met <input type="checkbox"/> Did not attend 	<p>Comments:</p>
--	-------------------------

- OR -

PRODS/GMEAS Plenary Session I PRODS/GMEAS Session 10:30 am – 12:00 pm

(CME Hours: 1.5)

MODERATOR: R. Johnson, J. Stubbs, L. Edgar

<p>Educational Objectives:</p> <ul style="list-style-type: none"> <input type="checkbox"/> Exceeded Expectations <input type="checkbox"/> Fully Met <input type="checkbox"/> Partially Met <input type="checkbox"/> Poorly Met <input type="checkbox"/> Did not attend 	<p>Comments:</p>
--	-------------------------

- OR -

Innovations in Promoting Pathology as a Career Choice UMEDS Session 10:30 am – 12:30 pm

(CME Hours: 2.0)

MODERATOR: E. Brooks, A. Gohara, B. Knollman, M. DeFrances, K. Warfield

<p>Educational Objectives:</p> <ul style="list-style-type: none"> <input type="checkbox"/> Exceeded Expectations <input type="checkbox"/> Fully Met <input type="checkbox"/> Partially Met <input type="checkbox"/> Poorly Met <input type="checkbox"/> Did not attend 	<p>Comments:</p>
--	-------------------------

Updates from ICPI & Working Groups PRODS Session 12:30 pm – 1:15 pm

(CME Hours: 0.75)

SPEAKERS: M. Sobel, R. Haspel, T. Macpherson

<p>Educational Objectives:</p> <ul style="list-style-type: none"> <input type="checkbox"/> Exceeded Expectations <input type="checkbox"/> Fully Met <input type="checkbox"/> Partially Met <input type="checkbox"/> Poorly Met <input type="checkbox"/> Did not attend 	<p>Comments:</p>
--	-------------------------

Leadership Development & Diversity Chairs/PRODS Session 1:30 pm – 3:00 pm

(CME Hours: 1.5)

SPEAKERS: A. Thor, D. Powell

<p>Educational Objectives:</p> <ul style="list-style-type: none"> <input type="checkbox"/> Exceeded Expectations <input type="checkbox"/> Fully Met <input type="checkbox"/> Partially Met <input type="checkbox"/> Poorly Met <input type="checkbox"/> Did not attend 	<p>Comments:</p>
--	-------------------------

- OR -

UME Pathology Competencies *UMEDS Session* 1:30 pm – 5:00 pm

(CME Hours: 3.0)

SPEAKERS: M. Uthman, H. Williams, B. Smith, A. Wells

<p>Educational Objectives:</p> <ul style="list-style-type: none"> <input type="checkbox"/> Exceeded Expectations <input type="checkbox"/> Fully Met <input type="checkbox"/> Partially Met <input type="checkbox"/> Poorly Met <input type="checkbox"/> Did not attend 	<p>Comments:</p>
--	-------------------------

PRODS/GMEAS Plenary Session II *PRODS/GMEAS Session* 3:30 pm – 5:00 pm

(CME Hours: 1.5)

SPEAKERS: K. Frank, B. Alexander, G. Davis, W. Naritoku, P. Kragel

<p>Educational Objectives:</p> <ul style="list-style-type: none"> <input type="checkbox"/> Exceeded Expectations <input type="checkbox"/> Fully Met <input type="checkbox"/> Partially Met <input type="checkbox"/> Poorly Met <input type="checkbox"/> Did not attend 	<p>Comments:</p>
--	-------------------------

- OR -

CONCURRENT CHAIR COMMITTEE MEETINGS

GME Committee Meeting 3:30 pm – 5:00 pm

(CME Hours: 1.5)

MODERATOR: P. Kragel

<p>Educational Objectives:</p> <ul style="list-style-type: none"> <input type="checkbox"/> Exceeded Expectations <input type="checkbox"/> Fully Met <input type="checkbox"/> Partially Met <input type="checkbox"/> Poorly Met <input type="checkbox"/> Did not attend 	<p>Comments:</p>
--	-------------------------

- OR -

Practice & Management Committee Meeting 3:30 pm – 5:00 pm

(CME Hours: 1.5)

MODERATOR: B. Ducatman

<p>Educational Objectives:</p> <ul style="list-style-type: none"> <input type="checkbox"/> Exceeded Expectations <input type="checkbox"/> Fully Met <input type="checkbox"/> Partially Met <input type="checkbox"/> Did not attend 	<p>Comments:</p>
---	-------------------------

- OR -

Research Committee Meeting 3:30 pm – 5:00 pm

(CME Hours: 1.5)

MODERATOR: D. Remick

<p>Educational Objectives:</p> <ul style="list-style-type: none"> <input type="checkbox"/> Exceeded Expectations <input type="checkbox"/> Fully Met <input type="checkbox"/> Partially Met <input type="checkbox"/> Did not attend 	<p>Comments:</p>
---	-------------------------

- OR -

UME Committee Meeting 3:30 pm – 5:00 pm

(CME Hours: 1.5)

MODERATOR: M. Prystowsky

<p>Educational Objectives:</p> <ul style="list-style-type: none"> <input type="checkbox"/> Exceeded Expectations <input type="checkbox"/> Fully Met <input type="checkbox"/> Partially Met <input type="checkbox"/> Did not attend 	<p>Comments:</p>
---	-------------------------

Friday, July 17, 2015

APC Strategic Highlights Chairs Session 8:00 am – 8:45 am

(CME Hours: 0.75)

SPEAKERS: D. Karcher, J. Crawford

<p>Educational Objectives:</p> <ul style="list-style-type: none"> <input type="checkbox"/> Exceeded expectations <input type="checkbox"/> Fully Met <input type="checkbox"/> Partially Met <input type="checkbox"/> Poorly Met <input type="checkbox"/> Did not attend 	<p>Comments:</p>
--	-------------------------

A Colloquium on FDA Oversight and Pathology Practice Chairs Session 8:45 am – 10:15 am

(CME Hours 1.5)

SPEAKERS: E. Litwack, W. Black-Schaffer, C. Hill, A. Carter

<p>Educational Objectives:</p> <ul style="list-style-type: none"> <input type="checkbox"/> Exceeded expectations <input type="checkbox"/> Fully Met <input type="checkbox"/> Partially Met <input type="checkbox"/> Poorly Met <input type="checkbox"/> Did not attend 	<p>Comments:</p>
--	-------------------------

- OR -

PRODS/GMEAS Plenary Session III PRODS/GMEAS Session 8:00 am – 10:00 am

(CME Hours: 2.0)

SPEAKERS: N. Zafar, R. Johnson

<p>Educational Objectives:</p> <ul style="list-style-type: none"> <input type="checkbox"/> Exceeded Expectations <input type="checkbox"/> Fully Met <input type="checkbox"/> Partially Met <input type="checkbox"/> Poorly Met <input type="checkbox"/> Did not attend 	<p>Comments:</p>
--	-------------------------

- OR -

What’s New in Pathology Education? UMEDS Session 8:00 am – 10:20 am

(CME Hours: 2.25)

SPEAKERS: P. Anderson, P. Boyer, R. Homer, J. Huang, A. Lin, A. Rapkiewicz, J. Woosley

<p>Educational Objectives:</p> <ul style="list-style-type: none"> <input type="checkbox"/> Exceeded expectations <input type="checkbox"/> Fully Met <input type="checkbox"/> Partially Met <input type="checkbox"/> Poorly Met <input type="checkbox"/> Did not attend 	<p>Comments:</p>
--	-------------------------

The Role of Pathologists in Infectious Outbreaks Chairs/UMEDS Session 10:30 am – 12:05 pm

(CME Hours: 1.5)

SPEAKERS: C. Hill, S. Zaki, J. Musser, D. Karcher

<p>Educational Objectives:</p> <ul style="list-style-type: none"> <input type="checkbox"/> Exceeded Expectations <input type="checkbox"/> Fully Met <input type="checkbox"/> Partially Met <input type="checkbox"/> Poorly Met <input type="checkbox"/> Did not attend 	<p>Comments:</p>
--	-------------------------

- OR -

Management system user groups PRODS/GMEAS Session 10:30 am – 12:00 pm

(CME Hours: 1.5)

CO-LEADERS: S. Anderson, A. Bourgeois, E. Hattab, L. Schwegman, A. Motta, L. Peterson, K. Smock, W. Naritoku

<p>Educational Objectives:</p> <ul style="list-style-type: none"> <input type="checkbox"/> Exceeded Expectations <input type="checkbox"/> Fully Met <input type="checkbox"/> Partially Met <input type="checkbox"/> Poorly Met <input type="checkbox"/> Did not attend 	<p>Comments:</p>
--	-------------------------

Overall Meeting Evaluation:

My objectives in attending this meeting included: (check all that apply)

- Learning more about workforce development and realignment to support current and new skill sets required to practice Pathology and Laboratory Medicine now and into the future.
- Learning the newest advances in research and implementation of cutting edge practice tools, such as diagnostics, genomic medicine, and bioinformatics; and their implications on future healthcare delivery.
- Learning the newest approaches to the development of educational programs and curricula for the training of medical students, residents, fellows, and senior pathologists.
- Making contacts to help me meet new educational objectives or duties.
- Increasing the quality of patient care provided through my pathology department.

My objectives were fulfilled: Yes No

<p>Comments:</p>

Rank the following statements:

The meeting content reflected the advertised title and description:

- Strongly Agree Agree Disagree Strongly Disagree

The meeting met the learning objectives listed:

- Strongly Agree Agree Disagree Strongly Disagree

The content was valuable and met your needs:

- Strongly Agree Agree Disagree Strongly Disagree

The content was free from commercial bias:

- Strongly Agree Agree Disagree Strongly Disagree

The content was well-organized:

- Strongly Agree Agree Disagree Strongly Disagree

The level of difficulty of the content was appropriate:

- Strongly Agree Agree Disagree Strongly Disagree

The content had practical application to your practice:

- Strongly Agree Agree Disagree Strongly Disagree

Comments:

How would you rate this educational activity overall - 1 (Lowest) to 10 (Highest):

- 1 2 3 4 5 6 7 8 9 10

Would you recommend this meeting to colleagues: Yes No

Rate the following general logistical points:

- | | | | | |
|-----------------------------------|------------------------------------|-------------------------------|-------------------------------|-------------------------------|
| Ease of travel: | <input type="checkbox"/> Excellent | <input type="checkbox"/> Good | <input type="checkbox"/> Fair | <input type="checkbox"/> Poor |
| Hotel accommodations: | <input type="checkbox"/> Excellent | <input type="checkbox"/> Good | <input type="checkbox"/> Fair | <input type="checkbox"/> Poor |
| Food and beverage: | <input type="checkbox"/> Excellent | <input type="checkbox"/> Good | <input type="checkbox"/> Fair | <input type="checkbox"/> Poor |
| Meeting environment (city, site): | <input type="checkbox"/> Excellent | <input type="checkbox"/> Good | <input type="checkbox"/> Fair | <input type="checkbox"/> Poor |
| Audiovisual: | <input type="checkbox"/> Excellent | <input type="checkbox"/> Good | <input type="checkbox"/> Fair | <input type="checkbox"/> Poor |
| Registration desk: | <input type="checkbox"/> Excellent | <input type="checkbox"/> Good | <input type="checkbox"/> Fair | <input type="checkbox"/> Poor |

Comments:

What suggestions do you have for improvement of this meeting?

Do you envision making changes in your setting as a result of information you learned at this meeting? Yes No

If yes, list the changes you envision and how you might implement them:

Change #1:

How will you implement Change #1?

Change #2:

How will you implement Change #2?

Change #3:

How will you implement Change #3?

What barriers might prevent you from making the above changes?

IMPORTANT: Please complete all areas of your CME Evaluation to the best of your ability. The preceding pages are provided only as a workbook. To submit your evaluation form for Continuing Medical Education credit, please visit www.apcprods.org/Meetings/2015/CME, and submit your completed form no later than September 15, 2015. Partially completed forms will not be accepted for credit.

Tab 3 - APC PROGRAM

Association of Pathology Chairs 2015 Annual Meeting

July 14-17, 2015

Rancho Bernardo Inn, San Diego, CA

Tuesday, July 14, 2015

GENERAL INFORMATION:

11:00 am – 7:00 pm

11:00 am – 2:00 pm

2:30 pm – 7:00 pm

Meeting Registration

Loggia (between Lobby and Bernardo Ballroom)

Aragon Foyer

3:00 pm – 7:00 pm

Exhibit Hours

Aragon Ballroom and Foyer

PROGRAM INFORMATION:

8:00 am – 12:45 pm

APC Council Meeting and Lunch

Granada Room

[This is not a Continuing Medical Education activity]

1:00 pm – 4:30 pm

Joint Chairs/PDAS Leadership Development Workshop: Leadership Skills for Changing Times

Santiago Ballroom II and III

1:00 pm – 1:10 pm

Welcome and Opening Remarks

Ann Thor, MD, University of Colorado, Denver

1:10 pm – 1:40 pm

50 Shades of Great: Progressive Discipline and Other Tools that Help Create Change

Peter Kragel, MD, East Carolina University

1:40 pm – 1:55 pm

Q & A, Small Group Discussion

1:55 pm – 2:25 pm

Leading and Mentoring for Success: One Size Does Not Fit All

Ann Thor, MD, University of Colorado, Denver

2:25 pm – 2:40 pm

Q & A, Small Group Discussion

2:40 pm – 2:55 pm

Break (in room)

2:55 pm – 3:25 pm

Funds Flow Principles at Penn Medicine and the Changing Landscape of Financing an Academic Pathology Department

Robert L. Challender, University of Pennsylvania

3:25 pm – 3:40 pm

Q & A, Small Group Discussion

3:40 pm – 4:10 pm

Managing with Data: Productivity, Benchmarking and the APC Survey

Barbara Ducatman, MD, West Virginia University

4:10 pm – 4:25 pm

Q & A, Small Group Discussion

Association of Pathology Chairs 2015 Annual Meeting

July 14-17, 2015

Rancho Bernardo Inn, San Diego, CA

4:25 pm – 4:30 pm Workshop Wrap-up
Ann Thor, MD, University of Colorado, Denver

4:30 pm – 5:15 pm Private Networking Event for New Chairs with APC Council and Senior Fellows
Santiago Ballroom IA/B
[This is not a Continuing Medical Education activity]

4:30 pm – 7:00 pm Opening Reception
Sponsored by American Society for Clinical Pathology (APC Platinum Partner)
Aragon Ballroom Foyer, Terrace and Lawn
[This is not a Continuing Medical Education activity]

Wednesday, July 15, 2015

GENERAL INFORMATION:

7:00 am – 5:00 pm Registration
Aragon Foyer

7:00 am – 6:00 pm Exhibit Hours
Aragon Ballroom and Foyer

9:00 am – 10:00 am SPICE (Spouse and Guest) Hospitality
Granada Lawn

PROGRAM INFORMATION:

6:45 am – 7:45 am Fellowship Directors Ad Hoc Committee Meeting and Breakfast
(Private – for Committee Members)
Santiago Ballroom IA
[This is not a Continuing Medical Education activity]

6:45 am – 7:45 am Autopsy Working Group Meeting and Breakfast
(Private – for Committee Members)
Santiago Ballroom IB
[This is not a Continuing Medical Education activity]

7:00 am – 8:00 am Breakfast, Exhibits
Aragon Ballroom, Foyer and Terrace
[This is not a Continuing Medical Education activity]

8:00 am – 6:00 pm UMEDS Posters on Display
Sponsored by Intersociety Council for Pathology Information (APC Gold Partner)
Aragon Foyer North

Association of Pathology Chairs 2015 Annual Meeting

July 14-17, 2015

Rancho Bernardo Inn, San Diego, CA

Poster Theme: Innovations in Promoting Pathology as a Career Choice

“Enhancing Preclinical Year Pathology Exposure: the Angevine Approach”

Authors: Erin G. Brooks, MD, University of Wisconsin; Erik A. Ranheim, MD, PhD, University of Wisconsin; Robert F. Corliss, MD, University of Wisconsin; Andreas Friedl, MD, University of Wisconsin

“Required Pathology/Radiology Clerkship”

Authors: Amira Gohara, MD, Department of Pathology, University of Toledo; Jacob Bieszczad, MD, Department of Radiology, University of Toledo

“Capturing Medical Student Interest in Pathology: The Pipeline of Our Future”

Author: Barbara Knollmann-Ritschel, MD, Uniformed Services University of the Health Sciences

“A Pathology Discovery Project for Pre-Clinical Medical Students”

Authors: Jeff Nine, MD, University of Pittsburgh; Jennifer Yoest, MD, University of Pittsburgh; Trevor MacPherson, MD, University of Pittsburgh

“Pathology Student Interest Group: A Success Story”

Authors: Katie Warfield, C-TAGME, University of Maryland; Dina Ioffe, MS2, University of Maryland

8:00 am – 10:30 am

Joint Chairs/PRODS/UMEDS/PDAS Advocacy Session: Innovation in Pathology Education & Workforce Training

Aragon Ballroom

Moderator: *John Tomaszewski, MD, State University of New York at Buffalo*

8:00 am – 8:05 am

Opening Remarks

John Tomaszewski, MD, State University of New York at Buffalo

8:05 am – 8:35 am

The Institute of Medicine Report on Graduate Medical Education

Deborah Powell, MD, University of Minnesota

8:35 am – 9:00 am

Innovation Within the Context of ACGME Policy

Thomas J. Nasca, MD, MACP, Accreditation Council for Graduate Medical Education

9:00 am – 9:25 am

American Board of Pathology Perspective and Initiatives

Rebecca Johnson, MD, American Board of Pathology

9:25 am – 10:00 am

Panel Questions from Pathology Roundtable Representatives:

*W. Stephen Black-Schaffer, MD, Massachusetts General Hospital
(for the College of American Pathologists)*

*Gregory Davis, MD, University of Alabama at Birmingham
(for the National Association of Medical Examiners)*

*William Finn, MD, Saint Joseph Mercy Health System
(for the American Society for Clinical Pathology)*

*Peter Kragel, MD, East Carolina University
(for the Association of Pathology Chairs)*

10:00 am – 10:30 am

Open Discussion

Association of Pathology Chairs 2015 Annual Meeting

July 14-17, 2015

Rancho Bernardo Inn, San Diego, CA

10:30 am – 11:00 am

Break, Exhibits, Posters

Aragon Ballroom, Foyer and Terrace

[This is not a Continuing Medical Education activity]

11:00 am – 12:30 pm

Joint Chairs/PRODS/UMEDS/PDAS Discussion Groups

Choose one:

- 11:00 am – 12:30 pm Group #1: Pathology Informatics Essentials for Residents (PIER): Sharing implementation successes and challenges
Granada Room
Co-Leaders: Scott Anderson, MD, University of Vermont; Walter H. Henricks, MD, Cleveland Clinic; Trevor Macpherson, MD, University of Pittsburgh
- 11:00 am – 12:30 pm Group #2: The changing landscape of laboratory outreach business
Santiago Ballroom II
Co-Leaders: Bryan Dangott, MD, East Carolina University; Paul J. Taylor-Smith, MD, University of Miami; Josh Yelen, University of Miami
- 11:00 am – 12:30 pm Group #3: Learning climate: How to enhance your department culture to ensure educational quality and accreditation
Bernardo Ballroom East
Co-Leaders: Regina Gandour-Edwards, MD, University of California, Davis; Lydia P. Howell, MD, University of California, Davis; Margret Magid, MD, Icahn School of Medicine at Mount Sinai
- 11:00 am – 12:30 pm Group #4: Identifying the challenges of 'small' pathology residency programs and creating collaborative solutions
Bernardo Ballroom West
Co-Leaders: Mary A. Furlong, MD, Georgetown University; Robin McGoey, MS, MD, Louisiana State University, New Orleans; Wesley Naritoku, MD, PhD, University of Southern California
- 11:00 am – 12:30 pm Group #5: Drawing the line: Does expanding the pathology residency curriculum really result in more capable practicing pathologists?
Valencia Room
Co-leaders: Karen Frank, MD, National Institutes of Health; Peter Kragel, MD, East Carolina University
- 11:00 am – 12:30 pm Group #6: Designing a curriculum in Quality for pathology residents: Preparing our trainees for success in the new healthcare era
La Taberna Room (in AVANT Restaurant)
Co-Leaders: Brian R. Smith, MD, Yale University; Dani S. Zander, MD, Pennsylvania State University
- 11:00 am – 12:30 pm Group #7: Pathology autopsy services and hospital rankings based on UHC mortality ratios: Is opportunity knocking?
Catalina Ballroom East
Co-Leaders: William Oliver, MD, East Carolina University; Jacob J. Steinberg, MD, Montefiore Medical Center

Association of Pathology Chairs 2015 Annual Meeting

July 14-17, 2015

Rancho Bernardo Inn, San Diego, CA

- 11:00 am – 12:30 pm Group #8: Onboarding: Facilitating transition from medical school to Pathology residency
El Biz Room (in AVANT Restaurant)
Co-Leaders: Tiffany Hebert, MD, Albert Einstein College of Medicine; Michael Prystowsky, MD, PhD, Albert Einstein College of Medicine; Nadeem Zafar, MBBS, MPhil, University of Tennessee
- 11:00 am – 12:30 pm Group #9: Keys to success: Supporting the transition from training to practice or faculty roles
Santiago Ballroom IB
Co-Leaders: Barbara Ducatman, MD, West Virginia University; Robert Low, MD, PhD, University of Colorado Denver
- 11:00 am – 12:30 pm Group #10: Navigating change: Helping faculty transition to retirement or alternative career paths
Santiago Ballroom IA
Co-Leaders: Harry Pukay-Martin, The Ohio State University; Ann Thor, MD, University of Colorado Denver
- 11:00 am – 12:30 pm Group #11: Alternative sources of funding for research
Santiago Ballroom III
Co-Leaders: Daniel Remick, MD, Boston University; Fred Sanfilippo, MD, Emory University
- 11:00 am – 12:30 pm Group #12: Faculty development: Increasing organizational awareness of leadership opportunities
Santiago Ballroom IC
Co-Leaders: John Baci, Boston Children's Hospital; James Crawford, MD, PhD, Hofstra North Shore-LIJ; Martin Lawlor, University of Michigan
- 12:30 pm – 2:00 pm** **Joint Chairs/PRODS/UMEDS/PDAS/GMEAS Award Lunch**
Aragon Ballroom
[This is not a Continuing Medical Education activity]
- 12:30 pm – 12:45 pm Welcome, Moment of Silence, Recognition of New Chairs
Donald Karcher, MD, The George Washington University
- 12:45 pm – 12:55 pm Recognition of Diamond Partners – Elsevier and Inspirata
Donald Karcher, MD, The George Washington University
- 12:55 pm – 1:05 pm Friends of Pathology Award Presentation
Recipient: *Jane Pine Wood, McDonald Hopkins*
- 1:05 pm – 1:15 pm PDAS Distinguished Service Award Presentation
Recipient: *Martha Miers, Vanderbilt University*
- 1:15 pm – 1:25 pm Michele Raible Distinguished Teaching Award Presentation
Recipient: *Regina Gandour-Edwards, MD, University of California, Davis*

Association of Pathology Chairs 2015 Annual Meeting

July 14-17, 2015

Rancho Bernardo Inn, San Diego, CA

- 1:25 pm – 1:35 pm Graduate Medical Education Distinguished Teaching Award Presentation
Recipient: *Stephen Black-Schaffer, MD, Massachusetts General Hospital*
- 1:35 pm – 1:45 pm APC Distinguished Service Award Presentation
Recipient: *J. Allan Tucker, MD, University of South Alabama*
- 1:45 pm – 2:00 pm Announcements
Donald Karcher, MD, The George Washington University
- 2:00 pm – 4:30 pm** **Joint Chairs/PDAS Practice & Management Session: Current Challenges in the Business Landscape for Pathology**
Santiago Ballroom II and III
Moderator: *Debra Leonard, MD, PhD, University of Vermont*
- 2:00 pm – 2:20 pm Local Coverage Determination: Defending the Practice of Pathology
Jennifer Hunt, MD, University of Arkansas for Medical Sciences
- 2:20 pm – 2:40 pm Utilization Issues in Pathology-Ordered Special/Immuno Stains
Thomas Wheeler, MD, Baylor College of Medicine
- 2:40 pm – 3:00 pm The Value Proposition for Pathology
Richard Cote, MD, University of Miami
- 3:00 pm – 3:20 pm Beacon LBS – Other Exclusive Contracts and Any Willing Provider
Paul J. Taylor-Smith, MD, University of Miami
- 3:20 pm – 3:40 pm Driving Value with a Hospital Outreach Laboratory Network
Martin Lawlor, University of Michigan
- 3:40 pm – 4:10 pm Legal Issues and Perspectives
Jane Pine Wood, JD, McDonald Hopkins
- 4:10 pm – 4:30 pm Concluding Panel Discussion, Q & A
- 4:30 pm – 9:00 pm** **Optional Event (Tickets Required): Safari Park Tour with Dinner Sponsored by Elsevier (APC Diamond Partner)**
- 4:30 pm to 6:10 pm Staggered Departures from Lobby Driveway for Safari Park Registrants
[This is not a Continuing Medical Education activity]
- 4:30 pm – 6:00 pm** **Networking Reception, Exhibits, Posters**
Aragon Ballroom Foyer, Terrace and Lawn
[This is not a Continuing Medical Education activity]
- 4:30 pm – 6:00 pm** **Senior Fellow Consults with Chairs (Private – for Senior Fellows and Chairs)**
Santiago Ballroom IA/B/C
[This is not a Continuing Medical Education activity]

Association of Pathology Chairs 2015 Annual Meeting

July 14-17, 2015

Rancho Bernardo Inn, San Diego, CA

- 4:30 pm – 6:00 pm** **Pathology Roundtable Meeting**
(Private – for Roundtable Representatives)
La Taberna Room (in AVANT Restaurant)
[This is not a Continuing Medical Education activity]
- 6:00 pm – 8:30 pm** **Advocacy Committee and Pipeline Subcommittee Meeting and Dinner**
(Private – for Committee Members)
La Taberna Room (in AVANT Restaurant)
[This is not a Continuing Medical Education activity]
- 6:00 pm – 8:30 pm** **Senior Fellows Ad Hoc Committee Meeting and Dinner**
(Private – for Committee Members)
El Biz Room (in AVANT Restaurant)
[This is not a Continuing Medical Education activity]

Thursday, July 16, 2015

GENERAL INFORMATION:

- 7:00 am – 5:00 pm** **Registration**
Aragon Ballroom Foyer
- 7:00 am – 1:00 pm** **Exhibit Hours**
Aragon Ballroom and Foyer
- 9:00 am – 10:00 am** **SPICE (Spouse and Guest) Hospitality**
Granada Lawn

PROGRAM INFORMATION:

- 6:45 am – 7:45 am** **Academic Pathology Editorial Board Meeting and Breakfast**
La Taberna Room (in AVANT Restaurant)
[This is not a Continuing Medical Education activity]
- 7:00 am – 8:00 am** **Breakfast, Exhibits**
Aragon Ballroom, Foyer and Terrace
[This is not a Continuing Medical Education activity]
- 8:00 am – 10:00 am** **Joint Chairs/PRODS/UMEDS Session: Practical Applications of Computational Pathology**
Aragon Ballroom
Moderator: *Karen Kaul, MD, PhD, NorthShore University HealthSystem*
- 8:00 am – 8:10 am Introduction
Karen Kaul, MD, PhD, NorthShore University HealthSystem
- 8:10 am – 8:30 am The Future is Now: Computational pathology for patient care
Alexis Carter, MD, Emory University

Association of Pathology Chairs 2015 Annual Meeting

July 14-17, 2015

Rancho Bernardo Inn, San Diego, CA

- 8:30 am – 9:00 am Wrangling Data, Rassling Doctors and Dragging Informatics into the Future
Ari Robicsek, MD, NorthShore University HealthSystem
- 9:00 am – 9:30 am Exemplars of Computational Pathology in Real-World Use-Cases: Multi-Analyte Assays with Algorithmic Analysis (MAAAs)
Ulysses Balis, MD, University of Michigan
- 9:30 am – 9:45 am Overview and Relevance of PIER (Pathology Informatics Essentials for Residents) Curriculum
Donald Karcher, MD, The George Washington University
- 9:45 am – 10:00 am Vignettes, Discussion
- 10:00 am – 10:30 am Break, Exhibits**
Aragon Ballroom, Foyer and Terrace
[This is not a Continuing Medical Education activity]
- 10:30 am – 12:00 pm Research Session: Training the Next Generation of Pathologist-Investigators**
Aragon Ballroom
Moderator: *Daniel Remick, MD, Boston University*
- 10:30 am – 10:35 am Introduction
Daniel Remick, MD, Boston University
- 10:35 am – 11:05 am National Institutes of Health Report and Recommendations on Training Physician/Investigators
Juanita Merchant, MD, PhD, University of Michigan
- 11:05 am – 11:35 am The Biomedical Workforce: Implication for training
Sally Rockey, PhD, Deputy Director for Extramural Research, National Institutes of Health
- 11:35 am – 12:00 pm Q & A
- 12:00 pm – 1:30 pm APC Business Meeting and Lunch**
Aragon Ballroom
[This is not a Continuing Medical Education activity]
- 1:30 pm – 3:00 pm Joint Chairs/PRODS Session: Leadership Development and Diversity**
Bernardo Ballroom
Moderator: *Ann Thor, MD, University of Colorado Denver*
- 1:30 pm – 1:40 pm Introduction
Ann Thor, MD, University of Colorado Denver
- 1:40 pm – 2:30 pm Diversity and Inclusion in Academic Pathology: What, why and how
Deborah Powell, MD, University of Minnesota
- 2:30 pm – 3:00 pm Q & A

Association of Pathology Chairs 2015 Annual Meeting

July 14-17, 2015

Rancho Bernardo Inn, San Diego, CA

- 3:00 pm – 3:30 pm** **Break, Prize Drawing**
Bernardo Cantina (Foyer) and Patio
[This is not a Continuing Medical Education activity]
- 3:30 pm – 5:00 pm** **APC (Chairs) Committee Meetings**
- 3:30 pm – 5:00 pm Graduate Medical Education Committee
 Santiago Ballroom IA
 Chair – Peter Kragel, MD, East Carolina University
- 3:30 pm – 5:00 pm Practice & Management Committee
 Santiago Ballroom IC
 Chair – Barbara Ducatman, MD, West Virginia University
- 3:30 pm – 5:00 pm Research Committee
 Valencia Room
 Chair – Daniel Remick, MD, Boston University
- 3:30 pm – 5:00 pm Undergraduate Medical Education Committee
 Santiago Ballroom IB
 Chair – Michael Prystowsky, MD, PhD, Albert Einstein College of Medicine
- 5:00 pm – 9:00 pm** **Optional Event (Tickets Required): Birch Aquarium Tour with Dinner**
 Sponsored by Inspirata and Philips (APC Diamond Partner)
 with support from the University of California, San Diego
 5:00 pm Departure from Lobby Driveway for CALM Labs (Pre-Tour) Registrants
 5:30 pm Departure from Lobby Driveway for Birch Aquarium Registrants
 [This is not a Continuing Medical Education activity]
- 5:00 pm – 6:00 pm** **Networking Reception**
Aragon Ballroom Foyer and Terrace
[This is not a Continuing Medical Education activity]

Friday, July 17, 2015

PROGRAM INFORMATION:

- 6:45 am – 7:45 am** **Leadership Development & Diversity Committee Meeting and Breakfast**
 with Diversity and Inclusion Program Fellows
 Aragon Ballroom IC
 [This is not a Continuing Medical Education activity]
- 7:00 am – 8:00 am** **Breakfast**
Aragon Ballroom Foyer and Terrace
[This is not a Continuing Medical Education activity]
- 8:00 am – 8:45 am** **APC Strategic Highlights**
Aragon Ballroom II

Association of Pathology Chairs 2015 Annual Meeting

July 14-17, 2015

Rancho Bernardo Inn, San Diego, CA

- 8:00 am – 8:30 am Discussion Group Outcomes & Meeting Summary
Donald Karcher, MD, The George Washington University
- 8:30 am – 8:45 am Our New Journal: *Academic Pathology*
James Crawford, MD, PhD, Hofstra North Shore-Long Island Jewish Hospital System
- 8:45 am – 10:15 am A Colloquium on FDA Oversight and Pathology Practice: Laboratory Developed Tests, Next Generation Sequencing, and Whole-Slide Imaging**
Aragon Ballroom II
Moderator: *Donald Karcher, MD, The George Washington University*
- 8:45 am – 9:30 am FDA Regulation of In Vitro Diagnostic Tests: Current initiatives and Perspectives
E. David Litwack, PhD, Office of In Vitro Diagnostics and Radiologic Health, Food & Drug Administration
- 9:30 am – 9:40 am FDA Oversight – A View from Academic Pathology
W. Stephen Black-Schaffer, MD, Massachusetts General Hospital
- 9:40 am – 9:50 am Laboratory Developed Tests and Next Generation Sequencing: The Association for Molecular Pathology's Perspective
Charles Hill, MD, PhD, Emory University
- 9:50 am – 10:00 am The View from the Association for Pathology Informatics
Alexis Carter, MD, Emory University
- 10:00 am – 10:15 am Discussion
- 10:15 am – 10:30 am Break**
Aragon Ballroom Foyer and Terrace
[This is not a Continuing Medical Education activity]
- 10:30 am – 12:05 pm Joint Chairs/UMEDS Session: The Role of Pathologists in Infectious Outbreaks**
Aragon Ballroom II
Moderator: *Tristram Parslow, MD, PhD, Emory University*
- 10:30 am – 10:55 am Ebola in the U.S.: Lessons Learned
Charles Hill, MD, PhD, Emory University
- 10:55 am – 11:20 am Unusual Donor-Derived Infections Associated with Organ Transplantation
Sherif Zaki, MD, PhD, Chief, Infectious Diseases Pathology Branch, Centers for Disease Control and Prevention
- 11:20 am – 11:45 am Simulated Outbreak and Investigation of Flesh-Eating Bacteria
James Musser, MD, PhD, Houston Methodist
- 11:45 am – 12:00 pm Panel Discussion, Q & A
- 12:00 pm – 12:05 pm Concluding Remarks and Farewell
Donald Karcher, MD, The George Washington University

Association of Pathology Chairs 2015 Annual Meeting

July 14-17, 2015

Rancho Bernardo Inn, San Diego, CA

APC Program Adjourns at 12:05 pm

12:05 pm – 1:00 pm

New Chairs Lunch with APC Council

Aragon Ballroom IC

[This is not a Continuing Medical Education activity]

12:05 pm – 1:00 pm

Joint APC/PDAS/UMEDS Farewell Lunch

Aragon Ballroom Foyer and Terrace

[This is not a Continuing Medical Education activity]

Tab 4 - PRODS PROGRAM

Association of Pathology Chairs 2015 Annual Meeting

July 14-17, 2015

Rancho Bernardo Inn, San Diego, CA

Tuesday, July 14, 2015

GENERAL INFORMATION:

11:00 am – 7:00 pm

11:00 am – 2:00 pm

2:30 pm – 7:00 pm

Meeting Registration

Loggia (between Lobby and Bernardo Ballroom)

Aragon Foyer

3:00 pm – 7:00 pm

Exhibit Hours

Aragon Ballroom and Foyer

PROGRAM INFORMATION:

11:00 am – 1:00 pm

PRODS Council Meeting and Lunch

El Biz (in AVANT Restaurant)

[This is not a Continuing Medical Education activity]

1:00 pm – 3:00 pm

Joint PRODS/GMEAS Boot Camp

Bernardo Ballroom

1:00 pm – 1:30 pm

Welcome and New Program Director's Orientation

Charles Timmons, MD, PhD, University of Texas Southwestern

1:30 pm – 2:00 pm

Introduction to the American Board of Pathology

Rebecca Johnson, MD, American Board of Pathology

2:00 pm – 2:30 pm

Introduction to the Pathology Review Committee

Laura Edgar, Executive Director, ACGME Review Committee for Pathology;

James Stubbs, MD, Chair, Review Committee for Pathology (Mayo Clinic)

2:30 pm – 3:00 pm

Q & A

3:00 pm – 3:30 pm

Break, Exhibits

Aragon Ballroom Foyer and Terrace

[This is not a Continuing Medical Education activity]

3:30 pm – 4:30 pm

New Program Director's Boot Camp

Bernardo Ballroom

3:30 pm – 3:40 pm

AAMC Organization of Resident Representatives Report

Meghan Kapp, MD, Vanderbilt University

3:40 pm – 3:50 pm

ASCP Resident Council Report

H. Cliff Sullivan, MD, Emory University

3:50 pm – 4:00 pm

USCAP Resident Report

Lauren Ritterhouse, MD, PhD, Brigham and Women's Hospital

4:00 pm – 4:10 pm

CAP Residents Forum Report

Lauren Stuart, MD, MBA, Emory University

Association of Pathology Chairs 2015 Annual Meeting

July 14-17, 2015

Rancho Bernardo Inn, San Diego, CA

4:10 pm – 4:30 pm Open Forum: Questions for Panel of Resident Representatives

4:30 pm – 7:00 pm **Opening Reception**
Sponsored by the American Society for Clinical Pathology (APC Platinum Partner)
Aragon Ballroom Foyer, Terrace and Lawn
[This is not a Continuing Medical Education activity]

Wednesday, July 15, 2015

GENERAL INFORMATION:

7:00 am – 5:00 pm **Registration**
Aragon Foyer

7:00 am – 6:00 pm **Exhibit Hours**
Aragon Ballroom and Foyer

9:00 am – 10:00 am **SPICE (Spouse and Guest) Hospitality**
Granada Lawn

PROGRAM INFORMATION:

6:45 am – 7:45 am **Fellowship Directors Ad Hoc Committee Meeting and Breakfast (Private – for Committee Members)**
Santiago Ballroom IA
[This is not a Continuing Medical Education activity]

6:45 am – 7:45 am **Autopsy Working Group Meeting and Breakfast (Private – for Committee Members)**
Santiago Ballroom IB
[This is not a Continuing Medical Education activity]

7:00 am – 8:00 am **Breakfast, Exhibits**
Aragon Ballroom, Foyer and Terrace
[This is not a Continuing Medical Education activity]

8:00 am – 6:00 pm **UMEDS Posters on Display**
Sponsored by the Intersociety Council for Pathology Information (APC Gold Partner)
Aragon Foyer North

Theme: Innovations in Promoting Pathology as a Career Choice

“Enhancing Preclinical Year Pathology Exposure: the Angevine Approach”

Authors: Erin G. Brooks, MD, University of Wisconsin; Erik A. Ranheim, MD, PhD, University of Wisconsin; Robert F. Corliss, MD, University of Wisconsin; Andreas Friedl, MD, University of Wisconsin

Association of Pathology Chairs 2015 Annual Meeting

July 14-17, 2015

Rancho Bernardo Inn, San Diego, CA

“Required Pathology/Radiology Clerkship”

Authors: Amira Gohara, MD, Department of Pathology, University of Toledo;
Jacob Bieszczad, MD, Department of Radiology, University of Toledo

“Capturing Medical Student Interest in Pathology: The Pipeline of Our Future”

Author: Barbara Knollmann-Ritschel, MD, Uniformed Services University of
the Health Sciences

“A Pathology Discovery Project for Pre-Clinical Medical Students”

Authors: Jeff Nine, MD, University of Pittsburgh; Jennifer Yoest, MD,
University of Pittsburgh; Trevor MacPherson, MD, University of Pittsburgh

“Pathology Student Interest Group: A Success Story”

Authors: Katie Warfield, C-TAGME, University of Maryland; Dina Ioffe, MS2,
University of Maryland

8:00 am – 10:30 am

**Joint Chairs/PRODS/UMEDS/PDAS Advocacy Session: Innovation in Pathology
Education & Workforce Training**

Aragon Ballroom

Moderator: *John Tomaszewski, MD, State University of New York at Buffalo*

8:00 am – 8:05 am

Opening Remarks

John Tomaszewski, MD, State University of New York at Buffalo

8:05 am – 8:35 am

The Institute of Medicine Report on Graduate Medical Education

Deborah Powell, MD, University of Minnesota

8:35 am – 9:00 am

Innovation Within the Context of ACGME Policy

*Thomas J. Nasca, MD, MACP, Accreditation Council for Graduate Medical
Education*

9:00 am – 9:25 am

American Board of Pathology Perspective and Initiatives

Rebecca Johnson, MD, American Board of Pathology

9:25 am – 10:00 am

Panel Questions from Pathology Roundtable Representatives:

*W. Stephen Black-Schaffer, MD, Massachusetts General Hospital
(for the College of American Pathologists)*

*Gregory Davis, MD, University of Alabama at Birmingham
(for the National Association of Medical Examiners)*

*William Finn, MD, Saint Joseph Mercy Health System
(for the American Society for Clinical Pathology)*

*Peter Kragel, MD, East Carolina University
(for the Association of Pathology Chairs)*

10:00 am – 10:30 am

Open Discussion

10:30 am – 11:00 am

Break, Exhibits

Aragon Ballroom, Foyer and Terrace

[This is not a Continuing Medical Education activity]

Association of Pathology Chairs 2015 Annual Meeting

July 14-17, 2015

Rancho Bernardo Inn, San Diego, CA

11:00 am – 12:30 pm

Joint Chairs/PRODS/UMEDS/PDAS Discussion Groups

Choose one:

- 11:00 am – 12:30 pm Group #1: Pathology Informatics Essentials for Residents (PIER): Sharing implementation successes and challenges
Granada Room
Co-Leaders: Scott Anderson, MD, University of Vermont; Walter H. Henricks, MD, Cleveland Clinic; Trevor Macpherson, MD, University of Pittsburgh
- 11:00 am – 12:30 pm Group #2: The changing landscape of laboratory outreach business
Santiago Ballroom II
Co-Leaders: Bryan Dangott, MD, East Carolina University; Paul J. Taylor-Smith, MD, University of Miami; Josh Yelen, University of Miami
- 11:00 am – 12:30 pm Group #3: Learning climate: How to enhance your department culture to ensure educational quality and accreditation
Bernardo Ballroom East
Co-Leaders: Regina Gandour-Edwards, MD, University of California, Davis; Lydia P. Howell, MD, University of California, Davis; Margret Magid, MD, Icahn School of Medicine at Mount Sinai
- 11:00 am – 12:30 pm Group #4: Identifying the challenges of ‘small’ pathology residency programs and creating collaborative solutions
Bernardo Ballroom West
Co-Leaders: Mary A. Furlong, MD, Georgetown University; Robin McGoey, MS, MD, Louisiana State University, New Orleans; Wesley Naritoku, MD, PhD, University of Southern California
- 11:00 am – 12:30 pm Group #5: Drawing the line: Does expanding the pathology residency curriculum really result in more capable practicing pathologists?
Valencia Room
Co-leaders: Karen Frank, MD, National Institutes of Health; Peter Kragel, MD, East Carolina University
- 11:00 am – 12:30 pm Group #6: Designing a curriculum in Quality for pathology residents: Preparing our trainees for success in the new healthcare era
La Taberna Room (in AVANT Restaurant)
Co-Leaders: Brian R. Smith, MD, Yale University; Dani S. Zander, MD, Pennsylvania State University
- 11:00 am – 12:30 pm Group #7: Pathology autopsy services and hospital rankings based on UHC mortality ratios: is opportunity knocking?
Catalina Ballroom East
Co-Leaders: William Oliver, MD, East Carolina University; Jacob J. Steinberg, MD, Montefiore Medical Center

Association of Pathology Chairs 2015 Annual Meeting

July 14-17, 2015

Rancho Bernardo Inn, San Diego, CA

- 11:00 am – 12:30 pm Group #8: Onboarding: Facilitating transition from medical school to Pathology residency
El Biz Room (in AVANT Restaurant)
Co-Leaders: Tiffany Hebert, MD, Albert Einstein College of Medicine; Michael Prystowsky, MD, PhD, Albert Einstein College of Medicine; Nadeem Zafar, MBBS, MPhil, University of Tennessee
- 11:00 am – 12:30 pm Group #9: Keys to success: Supporting the transition from training to practice or faculty roles
Santiago Ballroom IB
Co-Leaders: Barbara Ducatman, MD, West Virginia University; Robert Low, MD, PhD, University of Colorado Denver
- 11:00 am – 12:30 pm Group #10: Navigating change: Helping faculty transition to retirement or alternative career paths
Santiago Ballroom IA
Co-Leaders: Harry Pukay-Martin, The Ohio State University; Ann Thor, MD, University of Colorado Denver
- 11:00 am – 12:30 pm Group #11: Alternative sources of funding for research
Santiago Ballroom III
Co-Leaders: Daniel Remick, MD, Boston University; Fred Sanfilippo, MD, Emory University
- 11:00 am – 12:30 pm Group #12: Faculty development: Increasing organizational awareness of leadership opportunities
Santiago Ballroom IC
Co-Leaders: John Baci, Boston Children's Hospital; James Crawford, MD, PhD, Hofstra North Shore-LIJ; Martin Lawlor, University of Michigan
- 12:30 pm – 2:00 pm** **Joint Chairs/PRODS/UMEDS/PDAS/GMEAS Award Lunch**
Aragon Ballroom
[This is not a Continuing Medical Education activity]
- 12:30 pm – 12:45 pm Welcome, Moment of Silence, Recognition of New Chairs
Donald Karcher, MD, The George Washington University
- 12:45 pm – 12:55 pm Recognition of Partners – Elsevier and Inspirata
Donald Karcher, MD, The George Washington University
- 12:55 pm – 1:05 pm Friends of Pathology Award Presentation
Recipient: *Jane Pine Wood, McDonald Hopkins*
- 1:05 pm – 1:15 pm PDAS Distinguished Service Award Presentation
Recipient: *Martha Miers, Vanderbilt University*
- 1:15 pm – 1:25 pm Michele Raible Distinguished Teaching Award Presentation
Recipient: *Regina Gandour-Edwards, MD, University of California, Davis*

Association of Pathology Chairs 2015 Annual Meeting

July 14-17, 2015

Rancho Bernardo Inn, San Diego, CA

- 1:25 pm – 1:35 pm Graduate Medical Education Distinguished Teaching Award Presentation
Recipient: *W. Stephen Black-Schaffer, MD, Massachusetts General Hospital*
- 1:35 pm – 1:45 pm APC Distinguished Service Award Presentation
Recipient: *J. Allan Tucker, MD, University of South Alabama*
- 1:45 pm – 2:00 pm Announcements
Donald Karcher, MD, The George Washington University
- 2:00 pm – 4:30 pm** **Joint PRODS/UMEDS Session: Case Studies in Professionalism: An Interactive Session**
Bernardo Ballroom
Moderator: *Ronald E. Domen, Pennsylvania State University*
- 2:00 pm – 2:05 pm Welcome & Session Overview
Ronald E. Domen, MD, Pennsylvania State University
- 2:05 pm – 4:20 pm Case Presentations and Panel Discussion
Panelists: *Richard Conran, MD, PhD, JD, Eastern Virginia Medical School; Robert Hoffman, MD, PhD, Vanderbilt University; Miriam Post, MD, University of Colorado, Denver; Suzanne Powell, MD, Methodist Hospital System; Jacob J. Steinberg, MD, Montefiore Medical Center*
- 4:20 pm – 4:30 pm Closing Comments and Q & A
- 4:30 pm – 5:30 pm** **PIER Alpha Test Networking Event (Private – for Alpha Test Participants)**
Granada Room
[This is not a Continuing Medical Education activity]
- 4:30 pm – 9:00 pm** **Optional Event (Tickets Required): Safari Park Tour with Dinner Sponsored by Elsevier (APC Diamond Partner)**
4:30 pm to 6:10 pm Staggered Departures for Safari Park Registrants from Lobby Driveway
[This is not a Continuing Medical Education activity]
- 4:30 pm – 6:00 pm** **Networking Reception, Exhibits**
Aragon Ballroom Foyer, Terrace and Lawn
[This is not a Continuing Medical Education activity]
- 6:00 pm – 8:30 pm** **Advocacy Committee and Pipeline Subcommittee Meeting and Dinner (Private – for Committee Members)**
La Taberna Room (in AVANT Restaurant)
[This is not a Continuing Medical Education activity]

Thursday, July 16, 2015

GENERAL INFORMATION:

- 7:00 am – 5:00 pm** **Registration**
Aragon Ballroom Foyer

Association of Pathology Chairs 2015 Annual Meeting

July 14-17, 2015

Rancho Bernardo Inn, San Diego, CA

7:00 am – 1:00 pm

Exhibit Hours

Aragon Ballroom and Foyer

9:00 am – 10:00 am

SPICE (Spouse and Guest) Hospitality

Granada Lawn

PROGRAM INFORMATION:

6:45 am – 7:45 am

***Academic Pathology* Editorial Board Meeting and Breakfast**

La Taberna Room (in AVANT Restaurant)

[This is not a Continuing Medical Education activity]

7:00 am – 8:00 am

Breakfast, Exhibits

Aragon Ballroom, Foyer and Terrace

[This is not a Continuing Medical Education activity]

8:00 am – 10:00 am

Joint Chairs/PRODS/UMEDS Session: Practical Applications of Computational Pathology

Aragon Ballroom

Moderator: *Karen Kaul, MD, PhD, NorthShore University HealthSystem*

8:00 am – 8:10 am

Introduction

Karen Kaul, MD, PhD, NorthShore University HealthSystem

8:10 am – 8:30 am

The Future is Now: Computational pathology for patient care

Alexis Carter, MD, Emory University

8:30 am – 9:00 am

Wrangling Data, Rassling Doctors and Dragging Informatics into the Future

Ari Robicsek, MD, NorthShore University HealthSystem

9:00 am – 9:30 am

Exemplars of Computational Pathology in Real-World Use-Cases: Multi-Analyte Assays with Algorithmic Analysis (MAAAs)

Ulysses Balis, MD, University of Michigan

9:30 am – 9:45 am

Overview and Relevance of PIER (Pathology Informatics Essentials for Residents) Curriculum

Donald Karcher, MD, The George Washington University

9:45 am – 10:00 am

Vignettes, Discussion

10:00 am – 10:30 am

Break, Exhibits

Aragon Ballroom Foyer and Terrace

[This is not a Continuing Medical Education activity]

10:30 am – 12:00 pm

Joint PRODS/GMEAS Plenary Session I

Bernardo Ballroom

10:30 am – 10:50 am

American Board of Pathology Update

Rebecca Johnson, MD, American Board of Pathology

Association of Pathology Chairs 2015 Annual Meeting

July 14-17, 2015

Rancho Bernardo Inn, San Diego, CA

- 10:50 am – 11:00 am Q & A
- 11:00 am – 11:20 am Residency Review Committee for Pathology Update
James Stubbs, MD, Chair, Review Committee for Pathology (Mayo Clinic)
- 11:20 am – 11:40 am ACGME Pathology Review Committee Update
Laura Edgar, Executive Director, ACGME Review Committee for Pathology
- 11:40 am – 12:00 pm Q & A
- 12:00 pm – 12:30 pm PRODS Business Meeting and Lunch**
Bernardo Ballroom
[This is not a Continuing Medical Education activity]
- 12:30 pm – 1:15 pm PRODS Session: Updates from ICPI and Working Groups**
Bernardo Ballroom
- 12:30 pm – 12:45 pm Intersociety Council for Pathology Information (ICPI) Update
Mark Sobel, MD, PhD, Executive Officer, Intersociety Council for Pathology Information
- 12:45 pm – 1:00 pm Training Residents in Genomics (TRIG) Working Group Progress Report
Richard Haspel, MD, PhD, Beth Israel Deaconess
- 1:00 pm – 1:15 pm Informatics Working Group Progress Report
Trevor Macpherson, MD, University of Pittsburgh
- 1:15 pm – 1:30 pm Break**
Bernardo Cantina (Foyer) and Patio
[This is not a Continuing Medical Education activity]
- 1:30 pm – 3:00 pm Joint Chairs/PRODS Session: Leadership Development and Diversity**
Bernardo Ballroom
Moderator: *Ann Thor, MD, University of Colorado Denver*
- 1:30 pm – 1:40 pm Introduction
Ann Thor, MD, University of Colorado Denver
- 1:40 pm – 2:30 pm Keynote Address: Diversity and Inclusion in Academic Pathology: What, why and how
Deborah Powell, MD, University of Minnesota
- 2:30 pm – 3:00 pm Q & A
- 3:00 pm – 3:30 pm Break, Prize Drawing**
Bernardo Cantina (Foyer) and Patio
[This is not a Continuing Medical Education activity]
- 3:30 pm – 5:00 pm Joint PRODS/GMEAS Plenary Session II**
Bernardo Ballroom

Association of Pathology Chairs 2015 Annual Meeting

July 14-17, 2015

Rancho Bernardo Inn, San Diego, CA

3:30 pm – 3:50 pm	ASCP Resident In-Service Exam (RISE) Update <i>Karen Frank, MD, PhD, National Institutes of Health</i>
3:50 pm – 4:00 pm	National Resident Matching Program (NRMP) Update <i>C. Bruce Alexander, MD, University of Alabama at Birmingham</i>
4:00 pm – 4:15 pm	Autopsy Working Group Update <i>Gregory Davis, MD, University of Alabama at Birmingham</i>
4:15 pm – 4:30 pm	Pipeline Subcommittee Update <i>Wesley Naritoku, MD, PhD, University of Southern California</i>
4:30 pm – 4:45 pm	Fellowship Directors Ad Hoc Committee Update <i>Peter J. Kragel, MD, East Carolina University</i>
4:45 pm – 5:00 pm	Q & A
5:00 pm – 9:00 pm	Optional Event (Tickets Required): Birch Aquarium Tour with Dinner Sponsored by Inspirata and Philips (APC Diamond Partner) with support from the University of California, San Diego
5:00 pm	Departure from Lobby Driveway for CALM Labs (Pre-Tour) Registrants
5:30 pm	Departure from Lobby Driveway for Birch Aquarium Registrants [This is not a Continuing Medical Education activity]
5:00 pm – 6:00 pm	Networking Reception Aragon Ballroom Foyer and Terrace <i>[This is not a Continuing Medical Education activity]</i>
<u>Friday, July 17, 2015</u>	
6:45 am – 7:45 am	New PRODS Breakfast with PRODS Council Granada Room <i>[This is not a Continuing Medical Education activity]</i>
7:00 am – 8:00 am	Breakfast Bernardo Cantina (Foyer) and Patio <i>[This is not a Continuing Medical Education activity]</i>
8:00 am – 10:00 am	Joint PRODS/GMEAS Plenary Session III Bernardo Ballroom
8:00 am – 8:30 am	Readiness of Incoming Residents, Including Survey of PRODS, Discussion of Level 1 Milestones and On-Boarding <i>Nadeem Zafar, MBBS, MPhil, University of Tennessee</i>
8:30 am – 8:45 am	Q & A

Association of Pathology Chairs 2015 Annual Meeting

July 14-17, 2015

Rancho Bernardo Inn, San Diego, CA

- 8:45 am – 9:15 am Readiness of Graduating Residents, Including New-In-Training/MOC Survey Results
Rebecca Johnson, MD, American Board of Pathology
- 9:15 am – 10:00 am Q & A
- 10:00 am – 10:30 am Break**
Bernardo Cantina (Foyer)
[This is not a Continuing Medical Education activity]
- 10:30 am – 12:00 pm Joint PRODS/GMEAS Session: Break-Out Sessions for Management System User Groups**
- 10:30 am – 11:30 am **Choose one:**
- New Innovations Break-out Group
Bernardo Ballroom
Co-Leaders: *Scott Anderson, MD, University of Vermont; Amy Bourgeois, University of Vermont*
- MedHub Break-Out Group
Catalina Ballroom East
Co-Leaders: *Eyas Hattab, MD, Indiana University; Lindsay Schwegman, Indiana University*
- E*Value Break-Out Group
Catalina Ballroom West
Co-Leaders: *Amy Motta, Dartmouth-Hitchcock Medical Center; Lisa Peterson, University of Utah; Kristi Smock, MD, University of Utah*
- MyEvaluations Break-Out Group
Granada Room
Leaders: *Wesley Naritoku, MD, PhD, University of Southern California*
- 11:30 am – 12:00 pm Wrap-Up and Group Discussion
Bernardo Ballroom
- PRODS Program Adjourns at 12:00 pm***
- 12:00 pm – 1:00 pm Joint PRODS/GMEAS Farewell Lunch**
Bernardo Patio
[This is not a Continuing Medical Education activity]
- 1:00 pm – 4:00 pm Training Residents in Genomics (TRIG) Working Group Meeting**
Catalina Ballroom West
[This is not a Continuing Medical Education activity]

Tab 5 - PDAS PROGRAM

Association of Pathology Chairs 2015 Annual Meeting

July 14-17, 2015

Rancho Bernardo Inn, San Diego, CA

Tuesday, July 14, 2015

GENERAL INFORMATION:

11:00 am – 7:00 pm

11:00 am – 2:00 pm
2:30 pm – 7:00 pm

Meeting Registration

Loggia (between Lobby and Bernardo Ballroom)
Aragon Foyer

3:00 pm – 7:00 pm

Exhibit Hours

Aragon Ballroom and Foyer

PROGRAM INFORMATION:

1:00 pm – 4:30 pm

Joint Chairs/PDAS Leadership Development Workshop: Leadership Skills for Changing Times

Santiago Ballroom II and III

1:00 pm – 1:10 pm

Welcome and Opening Remarks
Ann Thor, MD, University of Colorado, Denver

1:10 pm – 1:40 pm

50 Shades of Great: Progressive Discipline and Other Tools that Help Create Change
Peter Kragel, MD, East Carolina University

1:40 pm – 1:55 pm

Q & A, Small Group Discussion

1:55 pm – 2:25 pm

Leading and Mentoring for Success: One Size Does Not Fit All
Ann Thor, MD, University of Colorado, Denver

2:25 pm – 2:40 pm

Q & A, Small Group Discussion

2:40 pm – 2:55 pm

Break

2:55 pm – 3:25 pm

Funds Flow Principles at Penn Medicine and the Changing Landscape of Financing an Academic Pathology Department
Robert L. Challender, University of Pennsylvania

3:25 pm – 3:40 pm

Q & A, Small Group Discussion

3:40 pm – 4:10 pm

Managing with Data: Productivity, Benchmarking and the APC Survey
Barbara Ducatman, MD, West Virginia University

4:10 pm – 4:25 pm

Q & A, Small Group Discussion

4:25 pm – 4:30 pm

Workshop Wrap-up
Ann Thor, MD, University of Colorado, Denver

Association of Pathology Chairs 2015 Annual Meeting

July 14-17, 2015

Rancho Bernardo Inn, San Diego, CA

- 4:30 pm – 5:30 pm** **Private Networking Event with PDAS Council for New Department Administrators & First Time Meeting Attendees**
Granada Room
[This is not a Continuing Medical Education activity]
- 4:30 pm – 7:00 pm** **Opening Reception**
Sponsored by the American Society for Clinical Pathology (APC Platinum Partner)
Aragon Ballroom Foyer, Terrace and Lawn
[This is not a Continuing Medical Education activity]

Wednesday, July 15, 2015

GENERAL INFORMATION:

- 7:00 am – 5:00 pm** **Registration**
Aragon Foyer
- 7:00 am – 6:00 pm** **Exhibit Hours**
Aragon Ballroom and Foyer
- 9:00 am – 10:00 am** **SPICE (Spouse and Guest) Hospitality**
Granada Lawn

PROGRAM INFORMATION:

- 7:00 am – 8:00 am** **Breakfast, Exhibits, Posters**
Aragon Ballroom, Foyer and Terrace
[This is not a Continuing Medical Education activity]
- 8:00 am – 6:00 pm** **UMEDS Posters on Display**
Sponsored by the Intersociety Council for Pathology Information (APC Gold Partner)
Aragon Foyer North

Theme: Innovations in Promoting Pathology as a Career Choice

“Enhancing Preclinical Year Pathology Exposure: the Angevine Approach”

Authors: Erin G. Brooks, MD, University of Wisconsin; Erik A. Ranheim, MD, PhD, University of Wisconsin; Robert F. Corliss, MD, University of Wisconsin; Andreas Friedl, MD, University of Wisconsin

“Required Pathology/Radiology Clerkship”

Authors: Amira Gohara, MD, Department of Pathology, University of Toledo; Jacob Bieszczad, MD, Department of Radiology, University of Toledo

“Capturing Medical Student Interest in Pathology: The Pipeline of Our Future”

Author: Barbara Knollmann-Ritschel, MD, Uniformed Services University of the Health Sciences

“A Pathology Discovery Project for Pre-Clinical Medical Students”

Authors: Jeff Nine, MD, University of Pittsburgh; Jennifer Yoest, MD, University of Pittsburgh; Trevor MacPherson, MD, University of Pittsburgh

Association of Pathology Chairs 2015 Annual Meeting

July 14-17, 2015

Rancho Bernardo Inn, San Diego, CA

“Pathology Student Interest Group: A Success Story”

Authors: Katie Warfield, C-TAGME, University of Maryland; Dina Ioffe, MS2, University of Maryland

8:00 am – 10:30 am

Joint Chairs/PRODS/UMEDS/PDAS Advocacy Session: Innovation in Pathology Education & Workforce Training

Aragon Ballroom

Moderator: *John Tomaszewski, MD, State University of New York at Buffalo*

8:05 am – 8:35 am

The Institute of Medicine Report on Graduate Medical Education
Deborah Powell, MD, University of Minnesota

8:35 am – 9:00 am

Innovation Within the Context of ACGME Policy
Thomas J. Nasca, MD, MACP, Accreditation Council for Graduate Medical Education

9:00 am – 9:25 am

American Board of Pathology Perspective and Initiatives
Rebecca Johnson, MD, American Board of Pathology

9:25 am – 10:00 am

Panel Questions from Pathology Roundtable Representatives:

*W. Stephen Black-Schaffer, MD, Massachusetts General Hospital
(for the College of American Pathologists)*

*Gregory Davis, MD, University of Alabama at Birmingham
(for the National Association of Medical Examiners)*

*William Finn, MD, Saint Joseph Mercy Health System
(for the American Society for Clinical Pathology)*

*Peter Kragel, MD, East Carolina University
(for the Association of Pathology Chairs)*

10:00 am – 10:30 am

Open Discussion

10:30 am – 11:00 am

Break, Exhibits, Posters

Aragon Ballroom, Foyer and Terrace

[This is not a Continuing Medical Education activity]

11:00 am – 12:30 pm

Joint Chairs/PRODS/UMEDS/PDAS Discussion Groups

Choose one:

11:00 am – 12:30 pm

Group #1: Pathology Informatics Essentials for Residents (PIER): Sharing implementation successes and challenges

Granada Room

Co-Leaders: Scott Anderson, MD, University of Vermont; Walter H. Henricks, MD, Cleveland Clinic; Trevor Macpherson, MD, University of Pittsburgh

Association of Pathology Chairs 2015 Annual Meeting

July 14-17, 2015

Rancho Bernardo Inn, San Diego, CA

- 11:00 am – 12:30 pm Group #2: The changing landscape of laboratory outreach business
Santiago Ballroom II
Co-Leaders: Bryan Dangott, MD, East Carolina University; Paul J. Taylor-Smith, MD, University of Miami; Josh Yelen, University of Miami
- 11:00 am – 12:30 pm Group #3: Learning climate: How to enhance your department culture to ensure educational quality and accreditation
Bernardo Ballroom East
Co-Leaders: Regina Gandour-Edwards, MD, University of California, Davis; Lydia P. Howell, MD, University of California, Davis; Margret Magid, MD, Icahn School of Medicine at Mount Sinai
- 11:00 am – 12:30 pm Group #4: Identifying the challenges of ‘small’ pathology residency programs and creating collaborative solutions
Bernardo Ballroom West
Co-Leaders: Mary A. Furlong, MD, Georgetown University; Robin McGoey, MS, MD, Louisiana State University, New Orleans; Wesley Naritoku, MD, PhD, University of Southern California
- 11:00 am – 12:30 pm Group #5: Drawing the line: Does expanding the pathology residency curriculum really result in more capable practicing pathologists?
Valencia Room
Co-leaders: Karen Frank, MD, National Institutes of Health; Peter Kragel, MD, East Carolina University
- 11:00 am – 12:30 pm Group #6: Designing a curriculum in Quality for pathology residents: Preparing our trainees for success in the new healthcare era
La Taberna Room (in AVANT Restaurant)
Co-Leaders: Brian R. Smith, MD, Yale University; Dani S. Zander, MD, Pennsylvania State University
- 11:00 am – 12:30 pm Group #7: Pathology autopsy services and hospital rankings based on UHC mortality ratios: is opportunity knocking?
Catalina Ballroom East
Co-Leaders: William Oliver, MD, East Carolina University; Jacob J. Steinberg, MD, Montefiore Medical Center
- 11:00 am – 12:30 pm Group #8: Onboarding: Facilitating transition from medical school to Pathology residency
El Biz Room (in AVANT Restaurant)
Co-Leaders: Tiffany Hebert, MD, Albert Einstein College of Medicine; Michael Prystowsky, MD, PhD, Albert Einstein College of Medicine; Nadeem Zafar, MBBS, MPhil, University of Tennessee
- 11:00 am – 12:30 pm Group #9: Keys to success: Supporting the transition from training to practice or faculty roles
Santiago Ballroom IB
Co-Leaders: Barbara Ducatman, MD, West Virginia University; Robert Low, MD, PhD, University of Colorado Denver

Association of Pathology Chairs 2015 Annual Meeting

July 14-17, 2015

Rancho Bernardo Inn, San Diego, CA

- 11:00 am – 12:30 pm Group #10: Navigating change: Helping faculty transition to retirement or alternative career paths
Santiago Ballroom IA
Co-Leaders: Harry Pukay-Martin, The Ohio State University; Ann Thor, MD, University of Colorado Denver
- 11:00 am – 12:30 pm Group #11: Alternative sources of funding for research
Santiago Ballroom III
Co-Leaders: Daniel Remick, MD, Boston University; Fred Sanfilippo, MD, Emory University
- 11:00 am – 12:30 pm Group #12: Faculty development: Increasing organizational awareness of leadership opportunities
Santiago Ballroom IC
Co-Leaders: John Baci, Boston Children's Hospital; James Crawford, MD, PhD, Hofstra North Shore-LIJ; Martin Lawlor, University of Michigan

12:30 pm – 2:00 pm

Joint Chairs/PRODS/UMEDS/PDAS/GMEAS Award Lunch

Aragon Ballroom

[This is not a Continuing Medical Education activity]

- 12:30 pm – 12:45 pm Welcome, Moment of Silence, Recognition of New Chairs
Donald Karcher, MD, The George Washington University
- 12:45 pm – 12:55 pm Recognition of Partners – Elsevier and Inspirata
Donald Karcher, MD, The George Washington University
- 12:55 pm – 1:05 pm Friends of Pathology Award Presentation
Recipient: *Jane Pine Wood, JD, McDonald Hopkins*
- 1:05 pm – 1:15 pm PDAS Distinguished Service Award Presentation
Recipient: *Martha Miers, Vanderbilt University*
- 1:15 pm – 1:25 pm Michele Raible Distinguished Teaching Award Presentation
Recipient: *Regina Gandour-Edwards, MD, University of California, Davis*
- 1:25 pm – 1:35 pm Graduate Medical Education Distinguished Teaching Award Presentation
Recipient: *W. Stephen Black-Schaffer, MD, Massachusetts General Hospital*
- 1:35 pm – 1:45 pm APC Distinguished Service Award Presentation
Recipient: *J. Allan Tucker, MD, University of South Alabama*
- 1:45 pm – 2:00 pm Announcements
Donald Karcher, MD, The George Washington University

2:00 pm – 4:30 pm

Joint Chairs/PDAS Practice & Management Session: Current Challenges in the Business Landscape for Pathology

Santiago Ballroom II and III

Moderator: *Debra Leonard, MD, PhD, University of Vermont*

Association of Pathology Chairs 2015 Annual Meeting

July 14-17, 2015

Rancho Bernardo Inn, San Diego, CA

2:00 pm – 2:20 pm	Local Coverage Determination: Defending the Practice of Pathology <i>Jennifer Hunt, MD, University of Arkansas for Medical Sciences</i>
2:20 pm – 2:40 pm	Utilization Issues in Pathology-Ordered Special/Immuno Stains <i>Thomas Wheeler, MD, Baylor College of Medicine</i>
2:40 pm – 3:00 pm	The Value Proposition for Pathology <i>Richard Cote, MD, University of Miami</i>
3:00 pm – 3:20 pm	Beacon LBS – Other Exclusive Contracts and Any Willing Provider <i>Paul Taylor-Smith, MD, University of Miami</i>
3:20 pm – 3:40 pm	Driving Value with a Hospital Outreach Laboratory Network <i>Martin Lawlor, University of Michigan</i>
3:40 pm – 4:10 pm	Legal Issues and Perspectives <i>Jane Pine Wood, JD, McDonald Hopkins</i>
4:10 pm – 4:30 pm	Concluding Panel Discussion, Q & A
4:30 pm – 9:00 pm	Optional Event (Tickets Required): Safari Park Tour with Dinner Sponsored by Elsevier (APC Diamond Partner)
4:30 pm to 6:10 pm	Staggered Departures from Lobby Driveway for Safari Park Registrants <i>[This is not a Continuing Medical Education activity]</i>
4:30 pm – 6:00 pm	Networking Reception, Exhibits, Posters Aragon Ballroom Foyer, Terrace and Lawn <i>[This is not a Continuing Medical Education activity]</i>
6:00 pm – 8:30 pm	Advocacy Committee and Pipeline Subcommittee Meeting and Dinner (Private – for Committee Members) La Taberna Room (in AVANT Restaurant) <i>[This is not a Continuing Medical Education activity]</i>

Thursday, July 16, 2015

GENERAL INFORMATION:

7:00 am – 5:00 pm	Registration Aragon Ballroom Foyer
7:00 am – 1:00 pm	Exhibit Hours Aragon Ballroom and Foyer
9:00 am – 10:00 am	SPICE (Spouse and Guest) Hospitality Granada Lawn

PROGRAM INFORMATION:

Association of Pathology Chairs 2015 Annual Meeting

July 14-17, 2015

Rancho Bernardo Inn, San Diego, CA

- 7:00 am – 8:00 am** **Breakfast, Exhibits**
Aragon Ballroom, Foyer and Terrace
[This is not a Continuing Medical Education activity]
- 8:00 am – 10:00 am** **PDAS Plenary Session I**
Santiago Ballroom II and III
- 8:00 am – 9:00 am Welcome and Introductions
Kelley Suskie, University of Arkansas for Medical Sciences
- 9:00 am – 10:00 am Multiple Missions in Academic Pathology - Conflicting or Reinforcing?
Richard Friedberg, MD, Baystate Medical Center
- 10:00 am – 10:30 am** **Break, Exhibits**
Aragon Ballroom, Foyer and Terrace
[This is not a Continuing Medical Education activity]
- 10:30 am – 12:00 pm** **PDAS Plenary Session I (continued)**
Santiago Ballroom II and III
- 10:30 am – 11:30 am Managed Care Contracting with Pathology in Mind
Karyn Rae, Director, Managed Care, Medical University of South Carolina
- 11:30 am – 12:00 pm Q&A
- 12:00 pm – 1:00 pm** **Hot Topics in Pathology Administration (with lunch)**
Santiago Ballroom II and III
- 12:00 pm – 12:30 pm Risk Assessment/Mitigating Strategies
Josh Yelen, University of Miami
- 12:30 pm – 1:00 pm Roundtable Discussion
Moderator: *Martin Lawlor, University of Michigan*
- 1:00 pm – 3:00 pm** **PDAS Plenary Session II**
Santiago Ballroom II and III
- 1:00 pm – 2:00 pm Surviving Expense Based Academic Pathology
Barbara Ducatman, MD, West Virginia University
- 2:00 pm – 3:00 pm Funds Flow for the Department of Pathology and Laboratory Medicine at Penn
Medicine
Robert Challender, University of Pennsylvania
- 3:00 pm – 3:30 pm** **Break, Prize Drawing**
Bernardo Cantina (Foyer) and Patio
[This is not a Continuing Medical Education activity]
- 3:30 pm – 4:30 pm** **PDAS Plenary Session II (continued)**
Santiago Ballroom II and III

Association of Pathology Chairs 2015 Annual Meeting

July 14-17, 2015

Rancho Bernardo Inn, San Diego, CA

3:30 pm – 4:30 pm Accounting for Faculty Effort
Kai Wang, University of California, San Francisco

4:30 pm – 6:00 pm Networking Reception
Aragon Ballroom Foyer, Terrace and Lawn
[This is not a Continuing Medical Education activity]

**5:00 pm – 9:00 pm Optional Event (Tickets Required): Birch Aquarium Tour with Dinner
Sponsored by Inspirata and Philips (APC Diamond Partner)
with support from the University of California, San Diego**

5:00 pm Departure from Lobby Driveway for CALM Labs (Pre-Tour) Registrants
5:30 pm Departure from Lobby Driveway for Birch Aquarium Registrants
[This is not a Continuing Medical Education activity]

Friday, July 17, 2015

PROGRAM INFORMATION:

7:00 am – 8:00 am Breakfast
Aragon Ballroom Foyer and Terrace
[This is not a Continuing Medical Education activity]

8:00 am – 9:00 am PDAS Business Meeting
Aragon Ballroom IIIA/B
[This is not a Continuing Medical Education activity]

9:00 am – 10:00 am PDAS Plenary Session III
Aragon Ballroom IIIA/B

9:00 am – 10:00 am Relative Value Unit Changes and Updates
Mick Raich, Vachette Pathology

10:00 am – 10:15 am Break

10:15 am – 11:45 pm Legal and Regulatory Update in Pathology
Jane Pine Wood, McDonald Hopkins

11:45 am – 12:00 pm Closing Remarks
*Kelley Suskie, University of Arkansas for Medical Sciences, outgoing PDAS Council
Chair; Martin Lawlor, University of Michigan, incoming PDAS Council Chair*

PDAS Program Adjourns at 12:00 pm

12:00 pm – 1:00 pm PDAS Council Meeting and Lunch
Aragon Ballroom IIIC
[This is not a Continuing Medical Education activity]

12:00 pm – 1:00 pm Joint APC/PDAS/UMEDS Farewell Lunch
Aragon Ballroom Foyer and Terrace
[This is not a Continuing Medical Education activity]

Tab 6 - UMEDS PROGRAM

Association of Pathology Chairs 2015 Annual Meeting

July 14-17, 2015

Rancho Bernardo Inn, San Diego, CA

7:00 am – 6:00 pm

Exhibit Hours

Aragon Ballroom and Foyer

7:00 am – 8:00 am

Poster Set-Up

Aragon Foyer North

9:00 am – 10:00 am

SPICE (Spouse and Guest) Hospitality

Granada Lawn

PROGRAM INFORMATION:

7:00 am – 8:00 am

Breakfast, Exhibits, Posters

Aragon Ballroom, Foyer and Terrace

[This is not a Continuing Medical Education activity]

7:15 am – 8:00 am

New UMEDS Breakfast with UMEDS Council

Catalina Ballroom East

[This is not a Continuing Medical Education activity]

8:00 am – 6:00 pm

UMEDS Posters on Display

Sponsored by the Intersociety Council for Pathology Information (APC Gold Partner)

Aragon Foyer North

Theme: Innovations in Promoting Pathology as a Career Choice

“Enhancing Preclinical Year Pathology Exposure: the Angevine Approach”

Authors: Erin G. Brooks, MD, University of Wisconsin; Erik A. Ranheim, MD, PhD, University of Wisconsin; Robert F. Corliss, MD, University of Wisconsin; Andreas Friedl, MD, University of Wisconsin

“Required Pathology/Radiology Clerkship”

Authors: Amira Gohara, MD, Department of Pathology, University of Toledo; Jacob Bieszczad, MD, Department of Radiology, University of Toledo

“Capturing Medical Student Interest in Pathology: The Pipeline of Our Future”

Author: Barbara Knollmann-Ritschel, MD, Uniformed Services University of the Health Sciences

“A Pathology Discovery Project for Pre-Clinical Medical Students”

Authors: Jeff Nine, MD, University of Pittsburgh; Jennifer Yoest, MD, University of Pittsburgh; Trevor MacPherson, MD, University of Pittsburgh

“Pathology Student Interest Group: A Success Story”

Authors: Katie Warfield, C-TAGME, University of Maryland; Dina Ioffe, MS2, University of Maryland

8:00 am – 10:30 am

Joint Chairs/PRODS/UMEDS/PDAS Advocacy Session: Innovation in Pathology Education & Workforce Training

Aragon Ballroom

Moderator: John Tomaszewski, MD, State University of New York at Buffalo

8:00 am – 8:05 am

Opening Remarks

John Tomaszewski, MD, State University of New York at Buffalo

Association of Pathology Chairs 2015 Annual Meeting

July 14-17, 2015

Rancho Bernardo Inn, San Diego, CA

- 8:05 am – 8:35 am The Institute of Medicine Report on Graduate Medical Education
Deborah Powell, MD, University of Minnesota
- 8:35 am – 9:00 am Innovation Within the Context of ACGME Policy
Thomas J. Nasca, MD, MACP, Accreditation Council for Graduate Medical Education
- 9:00 am – 9:25 am American Board of Pathology Perspective and Initiatives
Rebecca Johnson, MD, American Board of Pathology
- 9:25 am – 10:00 am Panel Questions from Pathology Roundtable Representatives:

*W. Stephen Black-Schaffer, MD, Massachusetts General Hospital
(for the College of American Pathologists)*

*Gregory Davis, MD, University of Alabama at Birmingham
(for the National Association of Medical Examiners)*

*William Finn, MD, Saint Joseph Mercy Health System
(for the American Society for Clinical Pathology)*

*Peter Kragel, MD, East Carolina University
(for the Association of Pathology Chairs)*
- 10:00 am – 10:30 am Open Discussion
- 10:30 am – 11:00 am Break, Exhibits, Posters**
Aragon Ballroom Foyer and Terrace
[This is not a Continuing Medical Education activity]
- 11:00 am – 12:30 pm Joint Chairs/PRODS/UMEDS/PDAS Discussion Groups**
- Choose one:**
- 11:00 am – 12:30 pm Group #1: Pathology Informatics Essentials for Residents (PIER): Sharing implementation successes and challenges
Granada Room
Co-Leaders: Scott Anderson, MD, University of Vermont; Walter H. Henricks, MD, Cleveland Clinic; Trevor Macpherson, MD, University of Pittsburgh
- 11:00 am – 12:30 pm Group #2: The changing landscape of laboratory outreach business
Santiago Ballroom II
Co-Leaders: Bryan Dangott, MD, East Carolina University; Paul J. Taylor-Smith, MD, University of Miami; Josh Yelen, University of Miami

Association of Pathology Chairs 2015 Annual Meeting

July 14-17, 2015

Rancho Bernardo Inn, San Diego, CA

- 11:00 am – 12:30 pm Group #3: Learning climate: How to enhance your department culture to ensure educational quality and accreditation
Bernardo Ballroom East
Co-Leaders: Regina Gandour-Edwards, MD, University of California, Davis; Lydia P. Howell, MD, University of California, Davis; Margret Magid, MD, Icahn School of Medicine at Mount Sinai
- 11:00 am – 12:30 pm Group #4: Identifying the challenges of ‘small’ pathology residency programs and creating collaborative solutions
Bernardo Ballroom West
Co-Leaders: Mary A. Furlong, MD, Georgetown University; Robin McGoey, MS, MD, Louisiana State University, New Orleans; Wesley Naritoku, MD, PhD, University of Southern California
- 11:00 am – 12:30 pm Group #5: Drawing the line: Does expanding the pathology residency curriculum really result in more capable practicing pathologists?
Valencia Room
Co-Leaders: Karen Frank, MD, National Institutes of Health; Peter Kragel, MD, East Carolina University
- 11:00 am – 12:30 pm Group #6: Designing a curriculum in Quality for pathology residents: Preparing our trainees for success in the new healthcare era
La Taberna Room (in AVANT Restaurant)
Co-Leaders: Brian R. Smith, MD, Yale University; Dani S. Zander, MD, Pennsylvania State University
- 11:00 am – 12:30 pm Group #7: Pathology autopsy services and hospital rankings based on UHC mortality ratios: is opportunity knocking?
Catalina Ballroom East
Co-Leaders: William Oliver, MD, East Carolina University; Jacob J. Steinberg, MD, Montefiore Medical Center
- 11:00 am – 12:30 pm Group #8: Onboarding: Facilitating transition from medical school to Pathology residency
El Biz Room (in AVANT Restaurant)
Co-Leaders: Tiffany Hebert, MD, Albert Einstein College of Medicine; Michael Prystowsky, MD, PhD, Albert Einstein College of Medicine; Nadeem Zafar, MBBS, MPhil, University of Tennessee
- 11:00 am – 12:30 pm Group #9: Keys to success: Supporting the transition from training to practice or faculty roles
Santiago Ballroom IB
Co-Leaders: Barbara Ducatman, MD, West Virginia University; Robert Low, MD, PhD, University of Colorado Denver
- 11:00 am – 12:30 pm Group #10: Navigating change: Helping faculty transition to retirement or alternative career paths
Santiago Ballroom IA
Co-Leaders: Harry Pukay-Martin, The Ohio State University; Ann Thor, MD, University of Colorado Denver

Association of Pathology Chairs 2015 Annual Meeting

July 14-17, 2015

Rancho Bernardo Inn, San Diego, CA

- 11:00 am – 12:30 pm Group #11: Alternative sources of funding for research
Santiago Ballroom III
Co-Leaders: Daniel Remick, MD, Boston University; Fred Sanfilippo, MD, Emory University
- 11:00 am – 12:30 pm Group #12: Faculty development: Increasing organizational awareness of leadership opportunities
Santiago Ballroom IC
Co-Leaders: John Baci, Boston Children's Hospital; James Crawford, MD, PhD, Hofstra North Shore-LIJ; Martin Lawlor, University of Michigan
- 12:30 pm – 2:00 pm** **Joint Chairs/PRODS/UMEDS/PDAS/GMEAS Award Lunch**
Aragon Ballroom
[This is not a Continuing Medical Education activity]
- 12:30 pm – 12:45 pm Welcome, Moment of Silence, Recognition of New Chairs
Donald Karcher, MD, The George Washington University
- 12:45 pm – 12:55 pm Recognition of Diamond Partners – Elsevier and Inspirata
Donald Karcher, MD, The George Washington University
- 12:55 pm – 1:05 pm Friends of Pathology Award Presentation
Recipient: *Jane Pine Wood, McDonald Hopkins*
- 1:05 pm – 1:15 pm PDAS Distinguished Service Award Presentation
Recipient: *Martha Miers, Vanderbilt University*
- 1:15 pm – 1:25 pm Michele Raible Distinguished Teaching Award Presentation
Recipient: *Regina Gandour-Edwards, MD, University of California, Davis*
- 1:25 pm – 1:35 pm Graduate Medical Education Distinguished Teaching Award Presentation
Recipient: *W. Stephen Black-Schaffer, MD, Massachusetts General Hospital*
- 1:35 pm – 1:45 pm APC Distinguished Service Award Presentation
Recipient: *J. Allan Tucker, MD, University of South Alabama*
- 1:45 pm – 2:00 pm Announcements
Donald Karcher, MD, The George Washington University
- 2:00 pm – 4:30 pm** **Joint PRODS/UMEDS Session: Case Studies in Professionalism: An Interactive Session**
Bernardo Ballroom
Moderator: Ronald E. Domen, Pennsylvania State University
- 2:00 pm – 2:05 pm Welcome and Session Overview
Ronald E. Domen, MD, Pennsylvania State University

Association of Pathology Chairs 2015 Annual Meeting

July 14-17, 2015

Rancho Bernardo Inn, San Diego, CA

2:05 pm – 4:20 pm Case Presentations and Panel Discussion
Panelists: *Richard Conran, MD, PhD, JD, Eastern Virginia Medical School; Robert Hoffman, MD, PhD, Vanderbilt University; Miriam Post, MD, University of Colorado, Denver; Suzanne Powell, MD, Methodist Hospital System; Jacob J. Steinberg, MD, Montefiore Medical Center*

4:20 pm – 4:30 pm Closing Comments and Q & A

4:30 pm – 6:00 pm **Networking Reception, Exhibits, Posters**
Aragon Ballroom Foyer, Terrace and Lawn
[This is not a Continuing Medical Education activity]

4:30 pm – 9:00 pm **Optional Event (Tickets Required): Safari Park Tour with Dinner**
Sponsored by Elsevier (APC Diamond Partner)
4:30 pm to 6:10 pm Staggered Departures from Lobby Driveway for Safari Park Registrants
[This is not a Continuing Medical Education activity]

6:00 pm – 8:30 pm **Advocacy Committee and Pipeline Subcommittee Dinner/Meeting**
(Private - for Committee Members)
La Taberna Room (in AVANT Restaurant)
[This is not a Continuing Medical Education activity]

Thursday, July 16, 2015

GENERAL INFORMATION:

7:00 am – 5:00 pm **Registration**
Aragon Ballroom Foyer

7:00 am – 1:00 pm **Exhibit Hours**
Aragon Ballroom and Foyer

9:00 am – 10:00 am **SPICE (Spouse and Guest) Hospitality**
Granada Lawn

PROGRAM INFORMATION:

6:45 am – 7:45 am **Academic Pathology Editorial Board Meeting and Breakfast**
La Taberna Room (in AVANT Restaurant)
[This is not a Continuing Medical Education activity]

7:00 am – 8:00 am **Breakfast, Exhibits**
Aragon Ballroom Foyer and Terrace
[This is not a Continuing Medical Education activity]

8:00 am – 10:00 am **Joint Chairs/PRODS/UMEDS Session: Practical Applications of Computational Pathology**
Aragon Ballroom
Moderator: Karen Kaul, MD, PhD, NorthShore University HealthSystem

Association of Pathology Chairs 2015 Annual Meeting

July 14-17, 2015

Rancho Bernardo Inn, San Diego, CA

8:00 am – 8:10 am	Introduction <i>Karen Kaul, MD, PhD, NorthShore University HealthSystem</i>
8:10 am – 8:30 am	The Future is Now: Computational pathology for patient care <i>Alexis Carter, MD, Emory University</i>
8:30 am – 9:00 am	Wrangling Data, Rassling Doctors and Dragging Informatics into the Future <i>Ari Robicsek, MD, NorthShore University HealthSystem</i>
9:00 am – 9:30 am	Exemplars of Computational Pathology in Real-World Use-Cases: Multi-Analyte Assays with Algorithmic Analysis (MAAAs) <i>Ulysses Balis, MD, University of Michigan</i>
9:30 am – 9:45 am	Overview and Relevance of PIER (Pathology Informatics Essentials for Residents) Curriculum <i>Donald Karcher, MD, The George Washington University</i>
9:45 am – 10:00 am	Vignettes, Discussion
10:00 am – 10:30 am	Break, Exhibits Aragon Ballroom Foyer and Terrace [This is not a Continuing Medical Education activity]
10:30 am – 12:30 pm	UMEDS Plenary Session I: Innovations in Promoting Pathology as a Career Choice Catalina Ballroom East
10:30 am – 10:50 am	Enhancing Preclinical Year Pathology Exposure: the Angevine Approach <i>Erin G. Brooks, MD, University of Wisconsin</i>
10:50 am – 11:10 am	Required Pathology/Radiology Clerkship <i>Amira Gohara, MD, University of Toledo</i>
11:10 am – 11:30 am	Early Capturing of Medical Student Interest in Pathology: The Pipeline of Our Future <i>Barbara Knollman-Ritschell, MD, Uniformed Services University of the Health Sciences</i>
11:30 am – 11:50 am	A Pathology Discovery Project for Pre-Clinical Medical Students <i>Marie C. DeFrances, MD, PhD, University of Pittsburgh</i>
11:50 am – 12:10 pm	Pathology Student Interest Group: A Success Story <i>Katie Warfield, University of Maryland</i>
12:10 pm – 12:30 pm	Panel Discussion
12:30 pm – 1:30 pm	UMEDS Business Meeting and Lunch Catalina Ballroom East [This is not a Continuing Medical Education activity]

Association of Pathology Chairs 2015 Annual Meeting

July 14-17, 2015

Rancho Bernardo Inn, San Diego, CA

- 1:30 pm – 3:00 pm** **UMEDS Plenary Session II: UME Pathology Competencies/Pathology for the “Undifferentiated” Medical Student**
Catalina Ballroom East
- 1:30 pm – 2:15 pm Core Entrustable Professional Activities for Entering Residency
Margaret Uthman, MD, University of Texas at Houston
- 2:15 pm – 3:00 pm Histopathology for the Undifferentiated Medical Student
H. James Williams, MD, West Virginia University
- 3:00 pm – 3:30 pm** **Break, Prize Drawing**
Bernardo Cantina (Foyer) and Patio
[This is not a Continuing Medical Education activity]
- 3:30 pm – 5:00 pm** **UMEDS Plenary Session II: UME Pathology Competencies/Pathology for the “Undifferentiated” Medical Student (continued)**
Catalina Ballroom East
- 3:30 pm – 4:15 pm Laboratory Diagnostics for the General Medical Student
Brian Smith, MD, Yale University
- 4:15 pm – 5:00 pm Clinical Pathology
Alan Wells, MD, DMS, University of Pittsburgh
- 5:00 pm – 6:00 pm** **Networking Reception**
Aragon Ballroom Foyer and Terrace
[This is not a Continuing Medical Education activity]
- 5:00 pm – 9:00 pm** **Optional Event (Tickets Required): Birch Aquarium Tour with Dinner Sponsored by Inspirata and Philips (APC Diamond Partner) with support from the University of California, San Diego**
- 5:00 pm Departure from Lobby Driveway for CALM Labs (Pre-Tour) Registrants
- 5:30 pm Departure from Lobby Driveway for Birch Aquarium Registrants
[This is not a Continuing Medical Education activity]

Friday, July 17, 2015

- 7:00 am – 8:00 am** **Breakfast**
Bernardo Cantina (Foyer) and Patio
[This is not a Continuing Medical Education activity]
- 8:00 am – 10:20 am** **UMEDS Plenary Session III: What’s New in Pathology Education?**
Catalina Ballroom East
- 8:00 am – 8:20 am Pathology Education Instructional Resource – Virtual Microscopy (PEIR-VM): A Universal, Open Standards, Web 2.0 Whole Slide Imaging Repository
Peter Anderson, DVM, PhD, University of Alabama at Birmingham

Association of Pathology Chairs 2015 Annual Meeting

July 14-17, 2015

Rancho Bernardo Inn, San Diego, CA

- 8:20 am – 8:40 am “Fair Use” of Copyrighted Material in Medical Education: Opportunities and Risks
Philip J. Boyer, MD, PhD, East Carolina University
- 8:40 am – 9:00 am Use of a Novel Interactive Web Based System for Pathology Laboratory Sessions
Robert Homer, MD, PhD, Yale University
- 9:00 am – 9:20 am Mandatory Pathology Rotation within Diagnostic Medicine Clerkship for All Medical Students: William Beaumont School of Medicine’s Experience
James Huang, MD, Oakland University
- 9:20 am – 9:40 am Implementation of a Mandatory Laboratory Medicine Course for 4th Year Medical Students
Amy Y. Lin, MD, University of Illinois at Chicago
- 9:40 am – 10:00 am Active Learning Using the Virtual Microscope
Amy Rapkiewicz, MD, New York University
- 10:00 am – 10:20 am Use of “Talking PowerPoint Slides” as a Technically Simpler Alternative to Virtual Microscopy
John Woosley, MD, PhD, University of North Carolina
- 10:20 am – 10:30 am Break**
Aragon Ballroom Foyer and Terrace
[This is not a Continuing Medical Education activity]
- 10:30 am – 12:05 pm Joint Chairs/UMEDS Session: The Role of Pathologists in Infectious Outbreaks**
Aragon Ballroom II
- 10:30 am – 10:55 am Ebola in the U.S.: Lessons learned
Charles Hill, MD, PhD, Emory University
- 10:55 am – 11:20 am Unusual Donor-Derived Infections Associated with Organ Transplantation
Sherif Zaki, MD, PhD, Chief, Infectious Diseases Pathology Branch, Centers for Disease Control and Prevention
- 11:20 am – 11:45 am Simulated Outbreak and Investigation of Flesh-Eating Bacteria
James Musser, MD, PhD, Houston Methodist
- 11:45 am – 12:00 pm Panel Discussion, Q & A
- 12:00 pm – 12:05 pm Concluding Remarks and Farewell
Donald Karcher, MD, The George Washington University
- UMEDS Program Adjourns at 12:05 pm**
- 12:05 pm – 1:00 pm Joint APC/UMEDS/PDAS Farewell Lunch**
Aragon Ballroom Foyer and Terrace
[This is not a Continuing Medical Education activity]

Tab 7 - GMEAS PROGRAM

Association of Pathology Chairs 2015 Annual Meeting

July 14-17, 2015

Rancho Bernardo Inn, San Diego, CA

Tuesday, July 14, 2015

GENERAL INFORMATION:

11:00 am – 7:00 pm

11:00 am – 2:00 pm

2:30 pm – 7:00 pm

Meeting Registration

Loggia (between Lobby and Bernardo Ballroom)

Aragon Foyer

3:00 pm – 7:00 pm

Exhibit Hours

Aragon Ballroom and Foyer

PROGRAM INFORMATION:

12:00 pm – 1:00 pm

GMEAS Council Meeting and Lunch

Catalina Ballroom West

[This is not a Continuing Medical Education activity]

1:00 pm – 3:00 pm

New Program Director's Boot Camp (Joint PRODS/GMEAS Session)

Bernardo Ballroom

1:00 pm – 1:30 pm

Welcome and New Program Director's Orientation

Charles Timmons, MD, PhD, University of Texas Southwestern Medical School

1:30 pm – 2:00 pm

Introduction to the American Board of Pathology

Rebecca Johnson, MD, CEO, American Board of Pathology

2:00 pm – 2:30 pm

Introduction to the Pathology Review Committee

Laura Edgar, Executive Director, RC for Pathology, ACGME; James Stubbs, MD, Mayo Clinic, Chair, RC for Pathology

2:30 pm – 3:00 pm

Q & A

3:00 pm – 3:15 pm

Break, Exhibits

Aragon Ballroom, Foyer and Terrace

[This is not a Continuing Medical Education activity]

3:15 pm – 5:00 pm

New Coordinator Welcome Session (Experienced Coordinators Welcome)

Catalina Ballroom West

3:15 pm – 3:30 pm

Welcome and Introductions from Chair of GMEAS

Jeanne Lay, University of New Mexico

3:30 pm – 4:00 pm

Accreditation Council for Graduate Medical Education: Updates, Next Accreditation System, Fellowships

Jeanne Lay, University of New Mexico

4:00 pm – 4:30 pm

New Coordinator – The Year at a Glance

Katie Warfield, University of Maryland

4:30 pm – 5:00 pm

Q & A

Association of Pathology Chairs 2015 Annual Meeting

July 14-17, 2015

Rancho Bernardo Inn, San Diego, CA

4:30 pm – 7:00 pm **Opening Reception**
Sponsored by American Society for Clinical Pathology (Platinum Partner)
Aragon Ballroom Foyer, Terrace and Lawn
[This is not a Continuing Medical Education activity]

Wednesday, July 15, 2015

GENERAL INFORMATION:

7:00 am – 5:00 pm **Registration**
Aragon Foyer

7:00 am – 6:00 pm **Exhibit Hours**
Aragon Ballroom and Foyer

9:00 am – 10:00 am **SPICE (Spouse and Guest) Hospitality**
Granada Lawn

PROGRAM INFORMATION:

7:00 am – 8:00 am **Breakfast, Exhibits**
Aragon Ballroom, Foyer and Terrace
[This is not a Continuing Medical Education activity]

8:00 am – 6:00 pm **UMEDS Posters on Display**
Sponsored by Intersociety Council for Pathology Information (APC Gold Partner)
Aragon Foyer North

Theme: Innovations in Promoting Pathology as a Career Choice

“Enhancing Preclinical Year Pathology Exposure: the Angevine Approach”
Authors: Erin G. Brooks, MD, University of Wisconsin; Erik A. Ranheim, MD, PhD, University of Wisconsin; Robert F. Corliss, MD, University of Wisconsin; Andreas Friedl, MD, University of Wisconsin

“Required Pathology/Radiology Clerkship”
Authors: Amira Gohara, MD, Department of Pathology, University of Toledo; Jacob Bieszczad, MD, Department of Radiology, University of Toledo

“Capturing Medical Student Interest in Pathology: The Pipeline of Our Future”
Author: Barbara Knollmann-Ritschel, MD, Uniformed Services University of the Health Sciences

“A Pathology Discovery Project for Pre-Clinical Medical Students”
Authors: Jeff Nine, MD, University of Pittsburgh; Jennifer Yoest, MD, University of Pittsburgh; Trevor MacPherson, MD, University of Pittsburgh

“Pathology Student Interest Group: A Success Story”
Authors: Katie Warfield, C-TAGME, University of Maryland; Dina Ioffe, MS2, University of Maryland

Association of Pathology Chairs 2015 Annual Meeting

July 14-17, 2015

Rancho Bernardo Inn, San Diego, CA

8:00 am – 6:00 pm

GMEAS Poster on Display

“Collective Intelligence and Systems Thinking: Making Your Program Evaluation Committee Work for You”

Authors: Elissa Hall, EdD, Mayo Clinic; Dawn Doherty, Mayo Clinic; Tasha Gilbertson, Mayo Clinic; Karla Flemke, Mayo Clinic; Sara Howen, Mayo Clinic; Tammy Olson, Mayo Clinic; Carrie Bowler, Mayo Clinic

8:00 am – 10:30 am

GMEAS Plenary Session I

Catalina Ballroom West

8:00 am – 9:00 am

Preparing for the Clinical Competency Committee Meeting
LeeTanya Marion-Murray, Cedars-Sinai; Annetta Pierro, University of California Los Angeles

9:00 am – 9:15 am

Q & A

9:15 am – 10:00 am

Pathology and the ACGME: Common Issues, Common Errors, and How Most Can Be Avoided
Erin Berryhill, Accreditation Administrator for ACGME Pathology Programs

10:00 am – 10:30 am

Q & A

10:30 am – 11:00 am

Break, Exhibits

Aragon Ballroom, Foyer and Terrace

[This is not a Continuing Medical Education activity]

11:00 am – 12:30 pm

GMEAS Plenary Session II: Emotional Intelligence: You Can Begin Again

Catalina Ballroom West

Moderator: Amy Motta, Dartmouth-Hitchcock Medical Center

11:00 – 12:00 pm

Panel Discussion

Panelists: Betsy McDonald, University of North Carolina-Chapel Hill; Amy Motta, Dartmouth-Hitchcock Medical Center

12:00 pm – 12:15 pm

Q & A

12:30 pm – 2:00 pm

Joint Chairs/PRODS/UMEDS/PDAS/GMEAS Award Lunch

Aragon Ballroom

[This is not a Continuing Medical Education activity]

12:30 pm – 12:45 pm

Welcome, Moment of Silence, Recognition of New Chairs
Donald Karcher, MD, The George Washington University

12:45 pm – 12:55 pm

Recognition of Diamond Partners – Elsevier and Inspirata
Donald Karcher, MD, The George Washington University

12:55 pm – 1:05 pm

Friends of Pathology Award Presentation

Recipient: Jane Pine Wood, McDonald Hopkins

Association of Pathology Chairs 2015 Annual Meeting

July 14-17, 2015

Rancho Bernardo Inn, San Diego, CA

- 1:05 pm – 1:15 pm PDAS Distinguished Service Award Presentation
Recipient: Martha Miers, Vanderbilt University
- 1:15 pm – 1:25 pm Michele Raible Distinguished Teaching Award Presentation
Recipient: Regina Gandour-Edwards, MD, University of California, Davis
- 1:25 pm – 1:35 pm Graduate Medical Education Distinguished Teaching Award Presentation
Recipient: Stephen Black-Schaffer, MD, Massachusetts General Hospital
- 1:35 pm – 1:45 pm APC Distinguished Service Award Presentation
Recipient: J. Allan Tucker, MD, University of South Alabama
- 1:45 pm – 2:00 pm Announcements
Donald Karcher, MD, The George Washington University
- 2:00 pm – 3:45 pm GMEAS Plenary Session III: ICPI Directory of Training Programs User Group Discussion**
Catalina Ballroom West
- 2:00 pm – 2:30 pm Open Discussion: Organizing Our Thoughts on the Directory
Moderator: *Betsy McDonald, University of North Carolina-Chapel Hill*
- 2:30 pm – 3:15 pm What ICPI Can Do For You
Mark Sobel, MD, PhD, Intersociety Council for Pathology Information
- 3:15 pm – 3:45 pm Q & A
- 4:30 pm – 9:00 pm Optional Event (Tickets Required): Safari Park Tour with Dinner Sponsored by Elsevier (APC Diamond Partner)**
- 4:30 pm to 6:10 pm Staggered Departures from Lobby Driveway for Safari Park Registrants
[This is not a Continuing Medical Education activity]
- 4:30 pm – 6:00 pm Networking Reception, Exhibits, Posters**
Aragon Ballroom Foyer and Terrace
[This is not a Continuing Medical Education activity]
- 6:00 pm – 8:30 pm Advocacy Committee and Pipeline Subcommittee Meeting and Dinner (Private - for Committee Members)**
La Taberna (in AVANT Restaurant)
[This is not a Continuing Medical Education activity]

Thursday, July 16, 2015

GENERAL INFORMATION:

- 7:00 am – 5:00 pm Registration**
Aragon Foyer
- 7:00 am – 1:00 pm Exhibit Hours**
Aragon Ballroom and Foyer

Association of Pathology Chairs 2015 Annual Meeting

July 14-17, 2015

Rancho Bernardo Inn, San Diego, CA

9:00 am – 10:00 am **SPICE (Spouse and Guest) Hospitality**
Granada Lawn

PROGRAM INFORMATION:

7:00 am – 8:00 am **Breakfast, Exhibits**
North Lawn/Catalina Ballroom Pre-Function Area
[This is not a Continuing Medical Education activity]

8:00 am – 10:00 am **GMEAS Plenary Session IV: ERAS® User Group Session**
Catalina Ballroom West
Moderator: Donald Sandlin, University of Arkansas

8:00 am – 9:00 am Open Discussion: Organizing Our Thoughts on ERAS®

9:00 am – 9:45 am ERAS® Updates
Dukhbhanjan Kaur (DK) Sujana, Director, ERAS Programs Relations, Association of American Medical Colleges

9:45 am – 10:00 am Q & A

10:00 am – 10:30 am **Break, Exhibits**
Aragon Ballroom Foyer and Terrace
[This is not a Continuing Medical Education activity]

10:30 am – 12:00 pm **Joint PRODS/GMEAS Plenary Session I**
Bernardo Ballroom

10:30 am – 10:50 am American Board of Pathology Update
Rebecca Johnson, MD, American Board of Pathology

10:50 am – 11:00 am Q & A

11:00 am – 11:20 am Residency Review Committee for Pathology Update
James Stubbs, MD, Chair, Review Committee for Pathology (Mayo Clinic)

11:20 am – 11:40 am ACGME Pathology Review Committee Update
Laura Edgar, Executive Director, ACGME Review Committee for Pathology

11:40 am – 12:00 pm Q & A

12:00 pm – 1:30 pm **GMEAS Business Meeting/Lunch, Updates**
Catalina Ballroom West
[This is not a Continuing Medical Education activity]

1:30 pm – 3:00 pm **GMEAS Plenary Session V**
Catalina Ballroom West

1:30 pm – 2:15 pm The Coordinator's Role in the "Pipeline"
Katie Warfield, University of Maryland

Association of Pathology Chairs 2015 Annual Meeting

July 14-17, 2015

Rancho Bernardo Inn, San Diego, CA

2:15 pm – 3:00 pm	Talkin' 'Bout My Generation <i>Donald Sandlin, University of Arkansas</i>
3:00 pm – 3:30 pm	Exclusive GMEAS Break Sponsored by College of American Pathologists (APC Gold Partner) North Lawn/Catalina Ballroom Pre-Function Area <i>[This is not a Continuing Medical Education activity]</i>
3:30 pm – 5:00 pm	Joint PRODS/GMEAS Plenary Session II Bernardo Ballroom
3:30 pm – 3:50 pm	ASCP Resident In-Service Exam (RISE) Update <i>Karen Frank, MD, PhD, National Institutes of Health</i>
3:50 pm – 4:00 pm	National Resident Matching Program (NRMP) Update <i>C. Bruce Alexander, MD, University of Alabama at Birmingham</i>
4:00 pm – 4:15 pm	Autopsy Working Group Update <i>Gregory Davis, MD, University of Alabama at Birmingham</i>
4:15 pm – 4:30 pm	Pipeline Subcommittee Update <i>Wesley Naritoku, MD, PhD, University of Southern California</i>
4:30 pm – 4:45 pm	Fellowship Directors Ad Hoc Committee Update <i>Peter J. Kragel, MD, East Carolina University</i>
4:45 pm – 5:00 pm	Q & A
5:00 pm – 9:00 pm	Optional Event (Tickets Required): Birch Aquarium Tour with Dinner Sponsored by Inspirata and Philips (APC Diamond Partner) with support from the University of California, San Diego
5:00 pm	Departure from Lobby Driveway for CALM Labs (Pre-Tour) Registrants
5:30 pm	Departure from Lobby Driveway for Birch Aquarium Registrants <i>[This is not a Continuing Medical Education activity]</i>
5:00 pm – 6:00 pm	Networking Reception Aragon Ballroom Foyer and Terrace <i>[This is not a Continuing Medical Education activity]</i>

Friday, July 17, 2015

PROGRAM INFORMATION:

7:00 am – 8:00 am	Breakfast Bernardo Cantina (Foyer) and Patio <i>[This is not a Continuing Medical Education activity]</i>
8:00 am – 10:00 am	Joint PRODS/GMEAS Plenary Session III Bernardo Ballroom

Association of Pathology Chairs 2015 Annual Meeting

July 14-17, 2015

Rancho Bernardo Inn, San Diego, CA

- 8:00 am – 8:30 am Readiness of Incoming Residents, Including Survey of PRODS, Discussion of Level 1 Milestones and On-Boarding
Nadeem Zafar, MBBS, MPhil, University of Tennessee
- 8:30 am – 8:45 am Q & A
- 8:45 am – 9:15 am Readiness of Graduating Residents, Including New-In-Training/MOC Survey Results
Rebecca Johnson, MD, American Board of Pathology
- 9:15 am – 10:00 am Q & A
- 10:00 am – 10:30 am Break**
Bernardo Cantina (Foyer)
[This is not a Continuing Medical Education activity]
- 10:30 am – 12:00 pm Joint PRODS/GMEAS Session: Break-Out Sessions for Management System User Groups**
- 10:30 am – 11:30 am **Choose one:**
- New Innovations Break-Out Group
Bernardo Ballroom
Co-Leaders: *Scott Anderson, MD, University of Vermont; Amy Bourgeois, University of Vermont*
- MedHub Break-Out Group
Catalina Ballroom East
Co-Leaders: *Eyas Hattab, MD, Indiana University; Lindsay Schwegman, Indiana University*
- E*Value Break-Out Group
Catalina Ballroom West
Co-Leaders: *Amy Motta, Dartmouth-Hitchcock Medical Center; Lisa Peterson, University of Utah; Kristi Smock, MD, University of Utah*
- MyEvaluations Break-Out Group
Granada Room
Leader: *Wesley Naritoku, MD, PhD, University of Southern California*
- 11:30 am – 12:00 pm Wrap-up and Group Discussion
Bernardo Ballroom
- GMEAS Program Adjourns at 12:00 pm**
- 12:00 pm – 1:00 pm Joint PRODS/GMEAS Farewell Lunch**
Bernardo Patio
[This is not a Continuing Medical Education activity]

Tab 8 - PARTICIPANTS

**Association of Pathology Chairs 2015 Annual Meeting
Participant List**

Adebowale Adeniran (PRODS)
Yale University (Pathology)
adebowale.adeniran@yale.edu

Seena Aisner (Chair)
Rutgers-New Jersey Medical School
aisnersc@njms.rutgers.edu

C. Bruce Alexander (PRODS)
U. of Alabama at Birmingham
cba@uab.edu

Gretchen Amend (GMEAS)
U. of Colorado SOM
gretchen.amend@ucdenver.edu

Peter G. Anderson (UMEDS)
U. of Alabama at Birmingham
pga@uab.edu

Raymond Anderson (GMEAS)
Tufts University SOM
randerson@tuftsmedicalcenter.org

Scott Anderson (PRODS)
U. of Vermont Med Center/ COM
scott.anderson@uvmhealth.org

Jared Andrews (PRODS)
Uniformed Services University of
the Health Sciences
jared.m.andrews4.mil@mail.mil

Chris Andry (PDAS)
Boston University SOM
chris.andry@bmc.org

Douglas Anthony (Chair)
Brown University
douglas_anthony@brown.edu

Leslie Antinarella (GMEAS)
U. of Rochester Medical Center
leslie_antinarella@urmc.rochester.
edu

Allison Aronson (Exhibit Staff)
QGenda
tradeshow@qgenda.com

Mohamed A. Asfour (PRODS)
U. of Mississippi Medical Center
maasfour@umc.edu

James B. Atkinson (UMEDS)
Vanderbilt University
james.b.atkinson@vanderbilt.edu

Jennifer Baccon (UMEDS)
Pennsylvania State COM
jbaccon@hmc.psu.edu

John Baci (PDAS)
Boston Children's Hospital
john.baci@childrens.harvard.edu

Cheryl Baker-Stasiak (PDAS)
West Virginia University
cstasiak@hsc.wvu.edu

Ulysses Balis (Speaker)
U. of Michigan
ulysses@med.umich.edu

Sarah Barth (GMEAS)
U. of Utah
sarah.barth@path.utah.edu

Nicholas Batalis (PRODS)
Medical University of South
Carolina
batalini@musc.edu

Frederick Behm (Chair)
U. of Illinois at Chicago
fredbehm@uic.edu

Candace Bergen (GMEAS)
Winthrop University Hospital
cbergen@winthrop.org

Erin Berryhill (Speaker)
ACGME
eberryhill@acgme.org

W. Stephen Black-Schaffer
(PRODS)
Massachusetts General Hospital
sblackschaffer@partners.org

Ann Marie Blenc (UMEDS)
Beaumont Health System -
OUWBSOM
annmarie.blenc@beaumont.edu

Michael J. Borowitz (UMEDS)
Johns Hopkins Medicine
mborowit@jhmi.edu

Amy Bourgeois (GMEAS)
U. of Vermont Med Center/ COM
amy.bourgeois@uvmhealth.org

Philip Boyer (UMEDS)
Brody SOM/East Carolina
University
boyerp14@ecu.edu

Patricia Braund (GMEAS)
U. of Colorado SOM
patricia.braund@ucdenver.edu

David Brink (PRODS)
St. Louis University HSC SOM
brinkds@slu.edu

Erin Brooks (Chair)
U. of Wisconsin
egbrooks@wisc.edu

J. Gary Brown (PDAS)
U. of Colorado SOM
gary.brown@ucdenver.edu

Rachael Buenafe -Jacinto (GMEAS)
Stanford University Medical Center
rjacinto@stanford.edu

Marjorie Bulone (Exhibit Staff)
Inspirata, Inc.
mbulone@inspirata.com

James Burner (PRODS)
U. of Texas Southwestern Medical
School
james.burner@utsouthwestern.ed
u

Carolyn L. Cambor (UMEDS)
U. of Pennsylvania SOM
carolyn.cambor@uphs.upenn.edu

Joan Cangiarella (Vice Chair)
New York University SOM
joan.cangiarella@nyumc.org

Steven L. Carroll (Chair)
Medical University of South
Carolina
carrolst@musc.edu

Alexis Carter (Speaker)
Emory University
abcart2@emory.edu

**Association of Pathology Chairs 2015 Annual Meeting
Participant List**

Christopher Carter (PRODS)
U. of Florida COM
ccarter2@pathology.ufl.edu

Jeffrey L. Casterline (PDAS)
Drexel University COM
jeffrey.casterline@drexelmed.edu

Subrata Chakrabarti (Chair)
U. of Western Ontario
subrata.chakrabarti@schulich.uwo.ca

Robert Challender (PDAS)
U. of Pennsylvania SOM
robert.challender@uphs.upenn.edu

Anne Champeaux (PRODS)
U. of South Florida COM
achampea@health.usf.edu

Deborah Chute (PRODS)
Cleveland Clinic Foundation
dchute1@gmail.com

Michael J. Clare-Salzler (Chair)
U. of Florida COM
salzler@pathology.ufl.edu

Douglas Clark (Chair)
U. of New Mexico SOM
dpclark@salud.unm.edu

Frederic Clayton (UMEDS)
U. of Utah SOM
drfclayton@gmail.com

Carrie Cohen (GMEAS)
U. of Texas Southwestern Medical School
carrie.cohen@utsouthwestern.edu

Stan Cohen (Senior Fellow)
New Jersey Medical School
cohenst@njms.rutgers.edu

Richard Conran (Chair)
Eastern Virginia Medical School
conranrm@evms.edu

Crystal Corpuz (GMEAS)
U. of Washington (Pathology)
ckcorpuz@uw.edu

Richard J. Cote (Chair)
U. of Miami Miller SOM
rcote@med.miami.edu

Rachel Cowan (PDAS)
U. of Washington (Pathology)
cowanr@uw.edu

James M. Crawford (Chair)
Hofstra North Shore - LIJ SOM
jcrawford1@nshs.edu

Mark Curtis (PRODS)
Thomas Jefferson University
Medical Center
mark.curtis@jefferson.edu

William Daley (UMEDS)
U. of Mississippi Medical Center
wdaley@umc.edu

Bryan Dangott (Speaker)
Brody SOM/East Carolina
University
dangottb@ecu.edu

Gregory Davis (Society Liaison)
U. of Alabama at Birmingham
gdavis@uab.edu

Julia de la Garza (UMEDS)
New York Medical College
julia_delagarza@nymc.edu

Marie C. DeFrances (UMEDS)
U. of Pittsburgh Medical School
defrancesmc@upmc.edu

Katie Dennis (PRODS)
U. of Kansas Medical Center
kdennis2@kumc.edu

Barry DeYoung (Chair)
Wake Forest University SOM
bdeyoung@wakehealth.edu

Catherine Diaz-Khansefid (PDAS)
U. of California, Davis Medical
Center
cjdiaz@ucdavis.edu

Lisa Dixon (PRODS)
U. of Florida COM
dixolr@pathology.ufl.edu

William (Tom) Dod (PDAS)
Duke University Medical Center
tom.dod@duke.edu

Michelle Dolan (PRODS)
U. of Minnesota Medical School
dolan009@umn.edu

Ronald E. Domen (PRODS)
Pennsylvania State COM
rdomen@hmc.psu.edu

Virginia Donovan (Chair)
Winthrop University Hospital
vdonovan@winthrop.org

Barbara S. Ducatman (Chair)
West Virginia University
bducatman@hsc.wvu.edu

Jennifer Dunlap (PRODS)
Oregon Health Sciences University
dunlapj@ohsu.edu

Laura Edgar (Speaker)
ACGME Residency Review
Committee
ledgar@acgme.org

Robert Edwards (UMEDS)
U. of California, Irvine SOM
redwards@uci.edu

Ronald J. Elin (Chair)
U. of Louisville SOM
ronald.elin@louisville.edu

David Elkowitz (UMEDS)
Hofstra North Shore - LIJ SOM
david.e.elkowitz@hofstra.edu

Robin Elliott (PRODS)
Case Western Reserve University -
UHCMC
robin.elliott@uhhospitals.org

Michael John Esposito (PRODS)
Hofstra North Shore - LIJ SOM
mesposit@nshs.edu

Susan Evers (PDAS)
U. of North Carolina-Chapel Hill
susan_evers@med.unc.edu

**Association of Pathology Chairs 2015 Annual Meeting
Participant List**

D. Greer Falls (PRODS) Medical College of Georgia at Georgia Regents University gfalls@gru.edu	Robert Folberg (Senior Fellow) Oakland University William Beaumont SOM rfolberg@oakland.edu	Margee Gearhart (GMEAS) St. Barnabas Medical Center mgearhart@barnabashealth.org
Kristin R. Fiebelkorn (PRODS) U. of Texas Health Science Center fiebelkorn@uthscsa.edu	Kathy Fox (Exhibit Staff) College of American Pathologists kfox@cap.org	Kuruville George (PDAS) U. of Alabama at Birmingham georgek@uab.edu
Mary Fiel-Gan (PRODS) Hartford Hospital mary.fiel-gan@hhchealth.org	Karen Frank (Society Liaison) National Institutes of Health karen.frank@nih.gov	Melissa George (PRODS) Pennsylvania State COM mgeorge5@hmc.psu.edu
Rachel Finck (PRODS) Harbor-UCLA Medical Center rfinck@dhs.lacounty.gov	Cori Freking (GMEAS) NorthShore University HealthSystem cfreking@northshore.org	Trish Glover (Society Liaison) College of American Pathologists tglover@cap.org
Jennifer Findeis-Hosey (UMEDS) U. of Rochester Medical Center jennifer_findeis- hosey@urmc.rochester.edu	Richard Friedberg (Society Liaison) Baystate Medical Center richard.friedberg@baystatehealth. org	Amira F. Gohara (UMEDS) U. of Toledo COM amira.gohara@utoledo.edu
William Finn (Society Liaison) ASCP finnwg@trinity-health.org	Andreas Friedl (Chair) U. of Wisconsin afriedl@wisc.edu	Jeffrey Golden (Chair) Brigham & Women's Hospital jagolden@partners.org
Adolfo Firpo-Betancourt (PRODS) Mount Sinai SOM adolfo.firpo@mssm.edu	Christine Fuller (PRODS) Virginia Commonwealth University/MCV cfuller@mcvh-vcu.edu	Juliana Gomez-Frausto (Exhibit Staff) Elsevier c.mcmahon@elsevier.com
Valerie Fitzhugh (PRODS) Rutgers-New Jersey Medical School fitzhuva@njms.rutgers.edu	Mary Furlong (PRODS) Georgetown University SOM furlonma@georgetown.edu	Steven L. Gonias (Chair) U. of California, San Diego SOM goniasoffice@ucsd.edu
Melina Flanagan (UMEDS) West Virginia University mflanagan@hsc.wvu.edu	Billie Fyfe-Kirschner (PRODS) Rutgers-Robert Wood Johnson Medical School fyfekibs@rwjms.rutgers.edu	Fred Gorstein (Senior Fellow) Thomas Jefferson University Medical Center fred.gorstein@jefferson.edu
Henry Flax (GMEAS) SUNY Downstate Medical Center henry.flax@downstate.edu	Stephen Galli (Chair) Stanford University Medical Center sgalli@stanford.edu	Marilea Grider (PDAS) Emory University mgride3@emory.edu
Karla Flemke (GMEAS) Mayo Clinic - Rochester flemke.karla@mayo.edu	Regina Gandour-Edwards (UMEDS) U. of California, Davis Medical Center rfgandouredwards@ucdavis.edu	Cheryl Gross (Non-member) ACGME cgross@acgme.org
Roxanne Florence (PRODS) Baystate Medical Center roxanne.florence@baystatehealth. org	Steven Garzon (PRODS) U. of Illinois at Chicago sgarzo1@uic.edu	Dave Gross (Society Liaison) College of American Pathologists dgross@cap.org
Adriana Flores (GMEAS) Harbor-UCLA Medical Center adflores@dhs.lacounty.gov		Steven Gudowski (PDAS) Thomas Jefferson University Medical Center steven.gudowski@jefferson.edu

**Association of Pathology Chairs 2015 Annual Meeting
Participant List**

Sakir Humayun Gultekin (PRODS)
Oregon Health Sciences University
gultekin@ohsu.edu

Melissa Guzzetta (Resident)
Hofstra North Shore - LIJ SOM
mguzzetta@nshs.edu

Kymerly Gyure (PRODS)
West Virginia University
kgyure@hsc.wvu.edu

Linda Hager (GMEAS)
Yale University (Pathology)
linda.hager@yale.edu

Stanley R. Hamilton (Chair)
MD Anderson Cancer Center
shamilto@mdanderson.org

Bing Han (PRODS)
Pennsylvania State COM
bhan@hmc.psu.edu

Cheryl Hanau (Chair)
Drexel University COM
chanau@drexelmed.edu

Beth Hansell (PDAS)
Medical University of South
Carolina
hansellb@musc.edu

Clifford V. Harding (Chair)
Case Western Reserve University
SOM
cvh3@case.edu

Richard Haspel (PRODS)
Beth Israel/Deaconess-East
Campus
rhaspel@bidmc.harvard.edu

Eyas Hattab (PRODS)
Indiana University SOM
ehattab@iupui.edu

Rachel Kyle Heap (GMEAS)
Houston Methodist Hospital
rheap@houstonmethodist.org

Tiffany Hebert (Speaker)
Montefiore Medical Center
thebert@montefiore.org

Reid R. Heffner (UMEDS)
SUNY at Buffalo SOM
rheffner@buffalo.edu

Richard Hegele (Chair)
U. of Toronto Medical College
richard.hegele@utoronto.ca

Walter Henricks (Speaker)
Cleveland Clinic
henricw@ccf.org

Michael Henry (Society Liaison)
Mayo Clinic Rochester
henry.michael@mayo.edu

Vicky Hernandez (PDAS)
U. of Texas Southwestern Medical
School
vicky.hernandez@utsouthwestern.
edu

Paul C. Herrmann (Chair)
Loma Linda University
pherrmann@llu.edu

Charles Hill (Speaker)
Emory University Hospital
cehill@emory.edu

Susan Hill (PDAS)
Indiana University SOM
suehill@iupui.edu

Brant Hilson (PDAS)
U. of Texas HSC - Houston
brant.m.hilson@uth.tmc.edu

Stacy Hinson (PRODS)
U. of Texas Southwestern Medical
School
stacy.hinson@utsouthwestern.edu

Robert D. Hoffman (PRODS)
Vanderbilt University
robert.d.hoffman@vanderbilt.edu

E. Blair Holladay (Society Liaison)
ASCP
blair.holladay@ascp.org

Carol Hollstein (GMEAS)
Loma Linda University SOM
chollstein@llu.edu

Robert Homer (UMEDS)
Yale University (Pathology)
robert.homer@yale.edu

Lydia Howard (PRODS)
Florida International University /
Herbert Wertheim COM
lydia.howard@msmc.com

David N. Howell (Chair)
Duke University Medical Center
david.howell@dm.duke.edu

Lydia Howell (Chair)
U. of California, Davis Medical
Center
lphowell@ucdavis.edu

James Huang (UMEDS)
William Beaumont Hospital
james.huang@beaumont.edu

Jennifer Hunt (Chair)
U. of Arkansas for Medical Sciences
jlhunt@uams.edu

Robert L. Hunter (Chair)
U. of Texas HSC - Houston
robert.l.hunter@uth.tmc.edu

Shonna Hunter (Exhibit Staff)
Elsevier
c.mcmahon@elsevier.com

Kedar Vishwas Inamdar (PRODS)
Henry Ford Hospital
kinamda1@hfhs.org

Olga B. Ioffe (UMEDS)
U. of Maryland SOM
oioffe@fpi.umaryland.edu

Humayun Islam (PRODS)
New York Medical College
islamh@wcmc.com

Jeff Jacobs (Society Liaison)
American Society for Clinical
Pathology
jeff.jacobs@ascp.org

Peter Jensen (Chair)
U. of Utah SOM
peter.jensen@path.utah.edu

**Association of Pathology Chairs 2015 Annual Meeting
Participant List**

Rebecca Johnson (Senior Fellow)
American Board of Pathology
rljohnson@abpath.org

Merce Jorda (Vice Chair)
U. of Miami SOM
mjorda@med.miami.edu

Michael Joshi-Guske (PDAS)
U. of Florida COM
guskemj@ufl.edu

Andrea Kahn (PRODS)
U. of South Alabama COM
akahn@health.southalabama.edu

David Kaminsky (Society Liaison)
USCAP
dkaminsky@pspathology.com

Meghan Kapp (Speaker)
Vanderbilt University
meghan.e.kapp@vanderbilt.edu

Nitin Karandikar (Chair)
U. of Iowa
nitin-karandikar@uiowa.edu

Donald Karcher (Chair)
George Washington University
SOM
dkarcher@mfa.gwu.edu

Tara Kasmarek (PDAS)
U. of California, Irvine COM
tkasmare@uci.edu

Karen Kaul (Chair)
NorthShore University
HealthSystem
kkaul@northshore.org

Harry Kellermier (PRODS)
Akron City Hospital (Summa Health
System)
kellermh@summahealth.org

Lisa Kilfeather (GMEAS)
Hofstra North Shore - LIJ SOM
lkilfeat@nshs.edu

Marsha C. Kinney (Chair)
U. of Texas Health Science Center
kinneym@uthscsa.edu

Scott Kirkley (PRODS)
U. of Rochester Medical Center
scott_kirkley@urmc.rochester.edu

Sumire Kitahara (PRODS)
Cedars-Sinai Medical Center
kitaharas@cshs.org

Thomas Kluzak (UMEDS)
U. of Kansas SOM
trkluzak@mac.com

Doug Knapman (Society Liaison)
College of American Pathologists
dknapma@cap.org

Barbara Knollmann-Ritschel
(UMEDS)
Uniformed Services University of
the Health Sciences
barbara.knollmann-
ritschel@usuhs.edu

Angelina Knott (PDAS)
U. of Mississippi Medical Center
aknott@umc.edu

Robert Knouse (GMEAS)
Georgetown University SOM
robert.d.knouse@gunet.georgeto
wn.edu

Kristen Kolb (PDAS)
Baystate Medical Center
kristen.kolb@baystatehealth.org

Mark Kolins (Chair)
Oakland University William
Beaumont SOM
mkolins@beaumont.edu

Diane Kowalski (PRODS)
Yale University (Pathology)
diane.kowalski@yale.edu

Chelle Kozy (GMEAS)
Orlando Health
erika.kozy@orlandohealth.com

Peter J. Kragel (Chair)
Brody SOM/East Carolina
University
kragelp@ecu.edu

Matthew Kuhar (PRODS)
Indiana University SOM
mkuhar@iupui.edu

Rachel Kulow (PDAS)
U. of Wisconsin
ragrimm@wisc.edu

Will Kyle (PDAS)
Houston Methodist Hospital
wkyle@houstonmethodist.org

Janice M. Lage (Chair)
U. of Mississippi Medical Center
jlage@umc.edu

Anand S. Lagoo (PRODS)
Duke University Medical Center
anand.lagoo@duke.edu

Susie Lambert (GMEAS)
Penrose St. Francis Health Services
susielambert@centura.org

Diana Lantz (PDAS)
Virginia Commonwealth
University/MCV
dlantz@mcvh-vcu.edu

Michael Laposata (Chair)
U. of Texas Medical Branch
milaposa@utmb.edu

P Rocco Lasala (PRODS)
West Virginia University
plasala@hsc.wvu.edu

Patricia Latham (UMEDS)
George Washington University
SOM
pslath@gwu.edu

Jennifer Laudadio (PRODS)
U. of Arkansas for Medical Sciences
jlaudadio@uams.edu

Martin Lawlor (PDAS)
U. of Michigan
lawlorm@med.umich.edu

Jeanne Lay (GMEAS)
U. of New Mexico SOM
jlay@salud.unm.edu

**Association of Pathology Chairs 2015 Annual Meeting
Participant List**

Edward L. Lee (PRODS)
Howard University COM
ellee@howard.edu

Elsie Lee (PRODS)
George Washington University
SOM
elee@mfa.gwu.edu

Jack Lee (PRODS)
NorthShore University
HealthSystem
jlee9@northshore.org

Patrick Lento (UMEDS)
New York Medical College
patrick_lento@nymc.edu

Debra G B Leonard (Chair)
U. of Vermont Medical Center and
COM
debra.leonard@uvmhealth.org

Bruce Levy (PRODS)
U. of Illinois at Chicago
bplevy@uic.edu

Madelyn Lew (UMEDS)
U. of Michigan
lewm1@med.umich.edu

Jenny Libien (Chair)
SUNY Downstate Medical Center
jenny.libien@downstate.edu

Andrea Ligler (PDAS)
Indiana University SOM
aligler@iupui.edu

Amy Lin (UMEDS)
U. of Illinois at Chicago
alin@uic.edu

Grace Lin (PRODS)
U. of California, San Diego SOM
g4lin@ucsd.edu

Ernest Litwack (Speaker)
FDA
ernest.litwack@fda.hhs.gov

Chen Liu (Vice Chair)
U. of Florida COM
liu@pathology.ufl.edu

Mark Lloyd (Exhibit Staff)
Inspirata, Inc.
mlloyd@inspirata.com

Teri Longacre (Society Liaison)
Stanford University Medical Center
longacre@stanford.edu

Robert L. Low (PRODS)
U. of Colorado SOM
robert.low@ucdenver.edu

William Lowder (PDAS)
U. of Utah
william.lowder@path.utah.edu

Anna M. Lurz (PDAS)
SUNY at Buffalo SOM
alurz@kaleidahealth.org

Gretchen Lussier (GMEAS)
Baystate Medical Center
gretchen.lussier@baystatehealth.org

Douglas Lynch (PRODS)
U. of South Dakota Sanford SOM
doug.lynch@usd.edu

Trevor Macpherson (PRODS)
U. of Pittsburgh Medical School
macpta@mail.magee.edu

Margret Magid (UMEDS)
Icahn SOM at Mount Sinai
margret.magid@mountsinai.org

Patricia Malinowski (PDAS)
U. of Miami Miller SOM
pmalinowski@med.miami.edu

James S. Malter (Chair)
U. of Texas Southwestern Medical
School
james.malter@utsouthwestern.edu

Pamela Mammarelli (GMEAS)
U. of Pennsylvania SOM
pamela.mammarelli@uphs.upenn.edu

Beth Mapow (PRODS)
Drexel University COM
beth.mapow@drexelmed.edu

LeeTanya Marion-Murray
(GMEAS)
Cedars-Sinai Medical Center
leetanya.marion-murray@cshs.org

Kimberly Martin (GMEAS)
U. of Nebraska Medical Center
kimberly.martin@unmc.edu

Mary Jo Martin (UMEDS)
Eastern Virginia Medical School
martinmj@evms.edu

Shahla Masood (Chair)
U. of Florida COM - Jacksonville
shahla.masood@jax.ufl.edu

Noreen Matsuda (PDAS)
U. of Hawaii/John A Burns SOM
nmatsuda@hawaii residency.org

Susan McCarthy (PDAS)
U. of Southern California/Keck
SOM
susanmcc@usc.edu

Cindy McCloskey (PRODS)
U. of Oklahoma COM
cindy-mccloskey@ouhsc.edu

Betsy McDonald (GMEAS)
U. of North Carolina-Chapel Hill
betsy.mcdonald@unchealth.unc.edu

Jay McDonald (Senior Fellow)
U. of Alabama at Birmingham
mcdonald@uab.edu

Robin McGoey (PRODS)
Louisiana State University HSC
rmcgoe@lsuhsc.edu

Linda McGuire (PDAS)
SUNY Downstate Medical Center
linda.mcguire@downstate.edu

Diana Medina (PDAS)
U. of Texas Health Science Center
medinad@uthscsa.edu

Juanita Merchant (Speaker)
U. of Michigan
merchanj@umich.edu

**Association of Pathology Chairs 2015 Annual Meeting
Participant List**

Roseanne Meyer (PDAS)
U. of Iowa COM
roseanne-meyer@uiowa.edu

Sarah Meyers (UMEDS)
U. of North Dakota SOM/Health
Sciences
sarah.meyers@med.und.edu

George K. Michalopoulos (Chair)
U. of Pittsburgh Medical School
michalopoulosgk@upmc.edu

Martha Miers (PDAS)
Vanderbilt University
martha.miers@vanderbilt.edu

Margaret W. Miles (PDAS)
Oregon Health Sciences University
milesm@ohsu.edu

Thomas Montine (Chair)
U. of Washington (Pathology)
tmontine@uw.edu

Kathleen Montone (PRODS)
U. of Pennsylvania SOM
kmontone@upenn.edu

Edwin Monuki (Chair)
U. of California, Irvine COM
emonuki@uci.edu

Amy Motta (GMEAS)
Dartmouth-Hitchcock Medical
Center
amy.l.motta@hitchcock.org

Robert E Mrak (Chair)
U. of Toledo COM
robert.mrak@utoledo.edu

Abir Mukherjee (PRODS)
Temple University Health Sciences
Center
abir.mukherjee@tuhs.temple.edu

William A. Muller (Chair)
Northwestern University Medical
School
wamuller@northwestern.edu

Maryrose Murphy (Society Liaison)
College of American Pathologists
mmurphy@cap.org

James Musser (Chair)
Houston Methodist Hospital
jmmusser@houstonmethodist.org

Wesley Y. Naritoku (PRODS)
U. of Southern California/Keck
SOM
naritoku@usc.edu

Thomas Nasca (Speaker)
ACGME
tnasca@acgme.org

Marcus Nashelsky (Society Liaison)
U. of Iowa Hospitals and Clinics
marcus-nashelsky@uiowa.edu

Maria D. Navarro (PRODS)
Hofstra North Shore - LIJ SOM
mnavarro@nshs.edu

Ann Neumann (Society Liaison)
College of American Pathologists
aneuman@cap.org

Marisa R. Nucci (PRODS)
Brigham & Women's Hospital
mnucci@partners.org

Juan Pablo Olano (PRODS)
U. of Texas Medical Branch
jolano@utmb.edu

William Oliver (Speaker)
Brody SOM/East Carolina
University
oliverw@ecu.edu

Kristin Olson (UMEDS)
U. of California, Davis Medical
Center
kriolson@ucdavis.edu

Joyce J. Ou (UMEDS)
Brown University
jou@wihri.org

Cheryl Ann Palmer (PRODS)
U. of Utah SOM
cheryl.palmer@path.utah.edu

Elizabeth Paradowski (GMEAS)
Medical College of Wisconsin
eparadowski@mcw.edu

Charles Parkos (Chair)
U. of Michigan
cparkos@med.umich.edu

Tristram Parslow (Chair)
Emory University
tparslo@emory.edu

Lisa Peterson (GMEAS)
U. of Utah
lisa.peterson@path.utah.edu

Carol Petito (PRODS)
U. of Miami SOM
cpetito@med.miami.edu

Annetta Pierro (GMEAS)
U. of California, Los Angeles
Hospital Center
apierro@mednet.ucla.edu

Jane Pine Wood (Speaker)
McDonald Hopkins
jwood@mcdonaldhopkins.com

Sue Plath Plath (Society Liaison)
College of American Pathologists
splath@cap.org

Miriam Post (UMEDS)
U. of Colorado SOM
miriam.post@ucdenver.edu

Deborah E. Powell (Senior Fellow)
U. of Minnesota Medical School
dpowell@umn.edu

Suzanne Z. Powell (PRODS)
Methodist Hospital System
spowell@houstonmethodist.org

Amy Powers (PRODS)
U. of Hawaii/John A Burns SOM
apowers@queens.org

Susan Erin Presnell (UMEDS)
Medical University of South
Carolina
mconnse@musc.edu

Victor G. Prieto (Vice Chair)
MD Anderson Cancer Center
vprieto@mdanderson.org

**Association of Pathology Chairs 2015 Annual Meeting
Participant List**

Michael B. Prystowsky (Chair)
Montefiore Med Ctr/Albert
Einstein COM
michael.prystowsky@einstein.yu.edu

Harry Pukay-Martin (Speaker)
The Ohio State University
pukay-martin@columbus.rr.com

Karyn Rae (Speaker)
Medical University of South
Carolina
raek@musc.edu

Petrie M. Rainey (PRODS)
U. of Washington (Laboratory
Medicine)
pmrainey@u.washington.edu

Rageshree Ramachandran
(UMEDS)
U. of California, San Francisco SOM
(Pathology)
rageshree.ramachandran@ucsf.edu

Arundhati Rao (PRODS)
Texas A&M/Scott & White Hospital
arao@sw.org

Amy Rapkiewicz (UMEDS)
New York University SOM
amy.rapkiewicz@nyumc.org

Hooman H. Rashidi (PRODS)
U. of California, Davis
hrashidi@ucdavis.edu

Donald P. Regula Jr (UMEDS)
Stanford University Medical Center
donald.regula@leland.stanford.edu

Daniel Remick (Chair)
Boston University SOM
daniel.remick@bmc.org

Dawn Richardson (PDAS)
U. of Vermont Med Center/ COM
dawn.richardson@uvm.edu

Nicole Riddle (PRODS)
U. of Texas Health Science Center
riddlen@uthscsa.edu

Henry Rinder (PRODS)
Yale University (Laboratory
Medicine)
henry.rinder@yale.edu

Nancy Risenhoover (PDAS)
U. of New Mexico SOM
nrisenhoover@salud.unm.edu

Lauren Ritterhouse (Resident)
Brigham & Women's Hospital
lritterhouse@partners.org

Stan Robboy (Senior Fellow)
Duke University
stanley.robboy@duke.edu

Ari Robicsek (Speaker)
NorthShore University
HealthSystem
arobicsek@northshore.org

Sally Rockey (Speaker)
National Institutes of Health
rockeyrsa@od.nih.gov

David Roth (Chair)
U. of Pennsylvania SOM
david.roth2@uphs.upenn.edu

Kevin A. Roth (Chair)
U. of Alabama at Birmingham
karothe@uab.edu

Charles Roussel (Society Liaison)
College of American Pathologists
crousse@cap.org

Emanuel Rubin (Senior Fellow)
Thomas Jefferson University
Medical Center
emanuel.rubin@jefferson.edu

Brian Rudolph (PDAS)
U. of Pittsburgh Medical School
rudolphb@upmc.edu

Moshe Sadofsky (UMEDS)
Montefiore Med Ctr/Albert
Einstein COM
moshe.sadofsky@einstein.yu.edu

Andrea Saenim (PDAS)
U. of Illinois at Chicago
sandrea@uic.edu

Wael Sakr (Chair)
Wayne State University SOM
wsakr@med.wayne.edu

Satish Sanan (Exhibit Staff)
Inspirata, Inc.
ssanan@inspirata.com

Ashley Sanders (GMEAS)
U. of Arkansas for Medical Sciences
aekendall@uams.edu

Donald Sandlin (GMEAS)
U. of Arkansas for Medical Sciences
desandlin@uams.edu

Amy M. Sands (PRODS)
SUNY at Buffalo SOM
asands@kaleidahealth.org

Fred P. Sanfilippo (Senior Fellow)
Emory University
fred.sanfilippo@emory.edu

Samuel A. Santoro (Chair)
Vanderbilt University
samuel.santoro@vanderbilt.edu

Arnold Scheer (PDAS)
U. of California, Los Angeles
Hospital Center
ascheer@mednet.ucla.edu

Linda Schiffhauer (PRODS)
U. of Rochester Medical Center
linda_schiffhauer@urmc.rochester.edu

Alan L. Schiller (Chair)
U. of Hawaii/John A Burns SOM
alanls@hawaii.edu

Janet Schmid (PRODS)
Tulane University SOM
jschmid@tulane.edu

Kurt Schmidt (Exhibit Staff)
College of American Pathologists
kuschmi@cap.org

Carrie Schneider (PRODS)
Temple University Health Sciences
Center
carrie.schneider@tuhs.temple.edu

**Association of Pathology Chairs 2015 Annual Meeting
Participant List**

Janet Schneller (UMEDS)
SUNY Downstate Medical Center
janet.schneller@downstate.edu

Lauren Schwartz (PRODS)
U. of Pennsylvania SOM
lauren.schwartz@uphs.upenn.edu

Lindsay Schwegman (GMEAS)
Indiana University SOM
ldschweg@iupui.edu

Arwa Shana'ah (PRODS)
Ohio State University
arwa.shanaah@osumc.edu

Poonam Sharma (Chair)
Creighton University Medical
Center
poonamsharma@creighton.edu

David Shimizu (PRODS)
U. of Hawaii/John A Burns SOM
dshimizu@queens.org

Kenneth R. Shroyer (Chair)
Stony Brook University
kenneth.shroyer@stonybrookmedi-
cine.edu

M. Salah Shurbaji (PRODS)
East Tennessee State
University/Quillen COM
shurbaji@mail.etsu.edu

Anwer Siddiqi (PRODS)
U. of Florida HSC - Jacksonville
anwer.siddiqi@jax.ufl.edu

Samantha Siemieniec (GMEAS)
U. of Illinois at Chicago
sliem@uic.edu

Meenakshi Singh (Chair)
U. of Kansas SOM
msingh2@kumc.edu

Brian Richard Smith (Chair)
Yale University (Laboratory
Medicine)
brian.smith@yale.edu

Kelly Smith (PRODS)
U. of Washington (Pathology)
kelsmith@uw.edu

Kenneth Smith (PDAS)
Mayo Clinic
smith.kenneth1@mayo.edu

Michelle Smith (GMEAS)
Virginia Commonwealth
University/MCV
msmith2@mcvh-vcu.edu

Kristi Smock (PRODS)
U. of Utah SOM
kristi.smock@aruplab.com

Bruce Smoller (Chair)
U. of Rochester Medical Center
bruce_smoller@urmc.rochester.ed-
u

Mark Sobel (Society Liaison)
ASIP & ICPI
mesobel@asip.org

Richard Sobonya (PRODS)
U. of Arizona Health Sciences
Center
rsobonya@pathology.arizona.edu

Angela Soto (GMEAS)
Texas A&M/Scott & White Hospital
asoto@sw.org

Jacob Steinberg (PRODS)
Montefiore Med Ctr/Albert
Einstein COM
jsteinbe@montefiore.org

Tait Stevens (PRODS)
Loma Linda University SOM
wstevens@llu.edu

Lauren Stuart (Resident)
Emory University
lauren.stuart@emory.edu

James Stubbs (Speaker)
Mayo Clinic
james.stubbs@mayo.edu

Leslie Stump (PDAS)
Ohio State University
leslie.stump@osumc.edu

DK Sujlana (Speaker)
AAMC/ERAS
dksujlana@aamc.org

H. Cliff Sullivan (Resident)
Emory University
hcsulli@emory.edu

Megan Sullivan (PRODS)
Northwestern University Medical
School
megsulli@nm.org

Peggy Sullivan (PRODS)
U. of California, Los Angeles
Medical Center
psullivan@mednet.ucla.edu

Kelley W. Suskie (PDAS)
U. of Arkansas for Medical Sciences
suskiekelleyw@uams.edu

Ann Sutton (PRODS)
Brody SOM/East Carolina
University
suttonan@ecu.edu

Kimiko Suzue (UMEDS)
Chicago Medical School/Rosalind
Franklin U. Med & Sci
kimiko.suzue@rosalindfranklin.edu

Michael L. Talbert (Chair)
U. of Oklahoma COM
michael-talbert@ouhsc.edu

Clive Taylor (Senior Fellow)
U. of Southern California/Keck
SOM
clive.taylor@med.usc.edu

Paul Taylor Smith (Vice Chair)
U. of Miami Miller SOM
ptaylorsmith@med.miami.edu

Robert Tessier (Non-member)
HBP Financial Services
rtessier@hbpworld.com

Karl Theil (PRODS)
Cleveland Clinic Foundation
theilk@ccf.org

Cameron Thomason (PDAS)
Wake Forest University SOM
cthomaso@wakehealth.edu

Ann D. Thor (Chair)
U. of Colorado SOM
ann.thor@ucdenver.edu

**Association of Pathology Chairs 2015 Annual Meeting
Participant List**

Lowell Tilzer (Senior Fellow)
U. of Kansas SOM
ltilzer@kumc.edu

Joey Timbers (Exhibit Staff)
QGenda
tradeshow@qgenda.com

Charles Timmons (PRODS)
U. of Texas Southwestern Medical
School
charles.timmons@childrens.com

John Tomaszewski (Chair)
SUNY at Buffalo SOM
johntoma@buffalo.edu

Douglas Toothman (PDAS)
West Virginia University
dtoothman@hsc.wvu.edu

Michael Towle (PDAS)
U. of Vermont Med Center/ COM
michael.towle@uvmhealth.org

Angela Trembl (PRODS)
U. of Chicago SOM
angela.trembl@uchospitals.edu

J. Allan Tucker (Chair)
U. of South Alabama COM
atucker@health.southalabama.edu

Melissa P. Upton (PRODS)
U. of Washington (Pathology)
mupton@uw.edu

Margaret Uthman (UMEDS)
U. of Texas HSC - Houston
margaret.o.uthman@uth.tmc.edu

Richard S. Vander Heide (Chair)
Louisiana State University HSC
rvand3@lsuhsc.edu

Vijay Vanguri (UMEDS)
U. of Massachusetts Med Center
vijay.vanguri@umassmed.edu

Holly Vargas (GMEAS)
U. of Washington (Pathology)
hlvargas@uw.edu

Ramapriya Vidhun (PRODS)
Danbury Hospital
ramapriya.vidhun@wchn.org

Carole A. Vogler (Chair)
St. Louis University SOM
voglerca@slu.edu

Erico Von Bueren (Resident)
Sakura Finetek USA, Inc.
evonbueren@sakuraus.com

Jay Wagner (Exhibit Staff)
ASCP
jay.wagner@ascp.org

Kai Wang (PDAS)
U. of California, San Francisco SOM
(Pathology)
kai.wang@ucsf.edu

Katie Warfield (GMEAS)
U. of Maryland SOM
KWarfiel@som.umaryland.edu

Douglas A. Weeks (Chair)
Oregon Health Sciences University
weeksd@ohsu.edu

Marcia R. Weis (PDAS)
St. Louis University HSC SOM
mweis4@slu.edu

David Weissmann (UMEDS)
Rutgers-Robert Wood Johnson
Medical School
weissmdj@rwjms.rutgers.edu

Alan Wells (UMEDS)
U. of Pittsburgh SOM
wellsa@upmc.edu

Thomas M Wheeler (Chair)
Baylor COM
twheeler@bcm.edu

Kristie L. White (PRODS)
U. of California, San Francisco SOM
(Laboratory Medicine)
kristie.white@ucsf.edu

David S. Wilkinson (Senior Fellow)
Virginia Commonwealth University
dwilkinson@mcvh-vcu.edu

H. James Williams (UMEDS)
West Virginia University
hjwilliams@hsc.wvu.edu

Marsha Williams (PDAS)
U. of Utah SOM
marsha.williams@path.utah.edu

Tamara Williams (UMEDS)
U. of Vermont Med Center/ COM
tamara.williams@med.uvm.edu

Allecia Wilson (PRODS)
U. of Michigan
alleciaw@med.umich.edu

Ryan Woodford (Exhibit Staff)
Elsevier
c.mcmahon@elsevier.com

John Woosley (UMEDS)
U. of North Carolina-Chapel Hill
john.woosley@unchealth.unc.edu

Debra Wycoff (GMEAS)
Yale University (Pathology)
debra.wycoff@yale.edu

Josh Yelen (PDAS)
U. of Miami SOM
jyelen@med.miami.edu

Jeong-Sook Yoo (PDAS)
Rutgers-New Jersey Medical School
yoojh@njms.rutgers.edu

Nadeem Zafar (PRODS)
U. of Tennessee Health Science
Center
nzafar@uthsc.edu

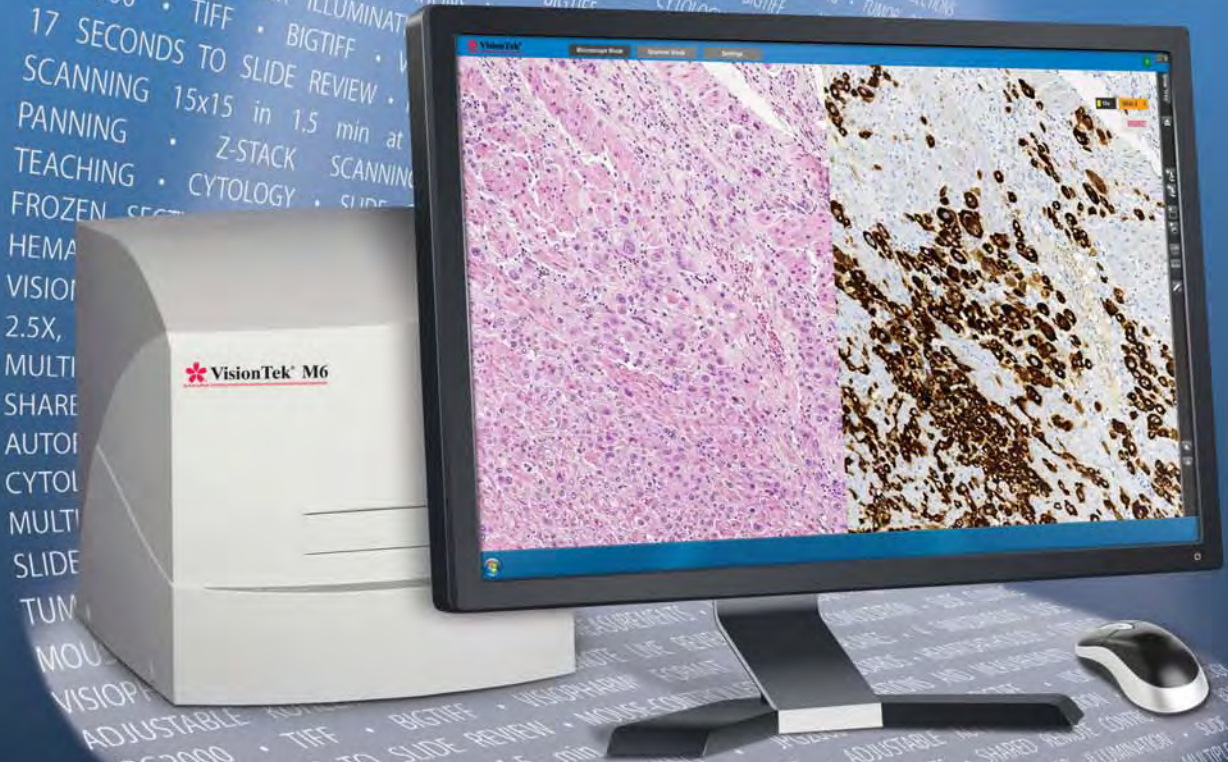
Sherif Zaki (Speaker)
CDC
sxz1@cdc.gov

Dani Zander (Chair)
Pennsylvania State COM
dzander@hmc.psu.edu

Xiaohui (Sheila) Zhao (PRODS)
U. of California, Irvine COM
zhaox@uci.edu

Suzanne Ziemnik (Exhibit Staff)
ASCP
suzanne.ziemnik@ascp.org

Shorten turnaround time through live remote consultation



VisionTek® M6

Digital Microscope



The Path to the Right Diagnosis

Elsevier leads the way in pathology with the most-trusted content, world-class authors, and innovative technology to help pathologists confidently select appropriate tests and reach the right diagnosis.

Online Decision Support ExpertPath™



Introducing ExpertPath

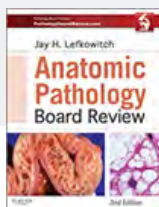
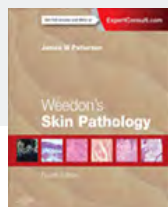
ExpertPath gives you instant access to the collective clinical knowledge of a team of renowned pathology sub-specialists.

- Over 4,000 common and complex diagnoses
- 50,000 searchable, high-quality annotated pathology images
- Tables with summary information for organ systems

Get an *ExpertPath*
Free Trial
www.expertpath.com

Trusted Content, Special Savings

Recently published!



Find Out More At: www.us.elsevierhealth.com/path2015